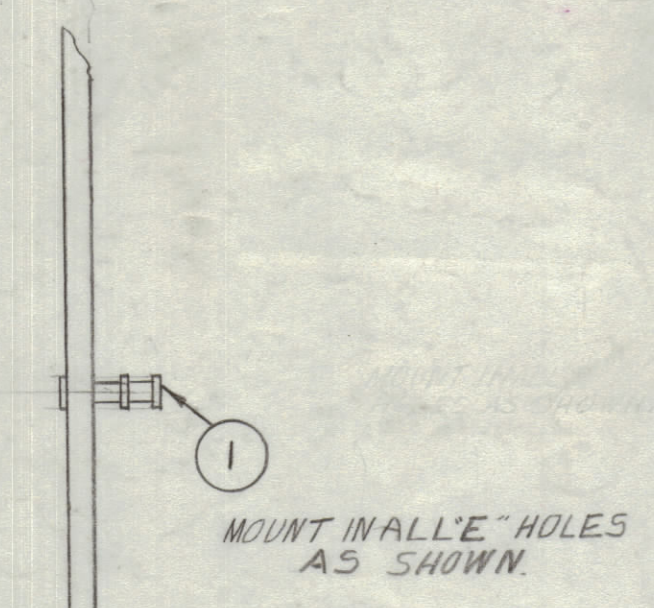
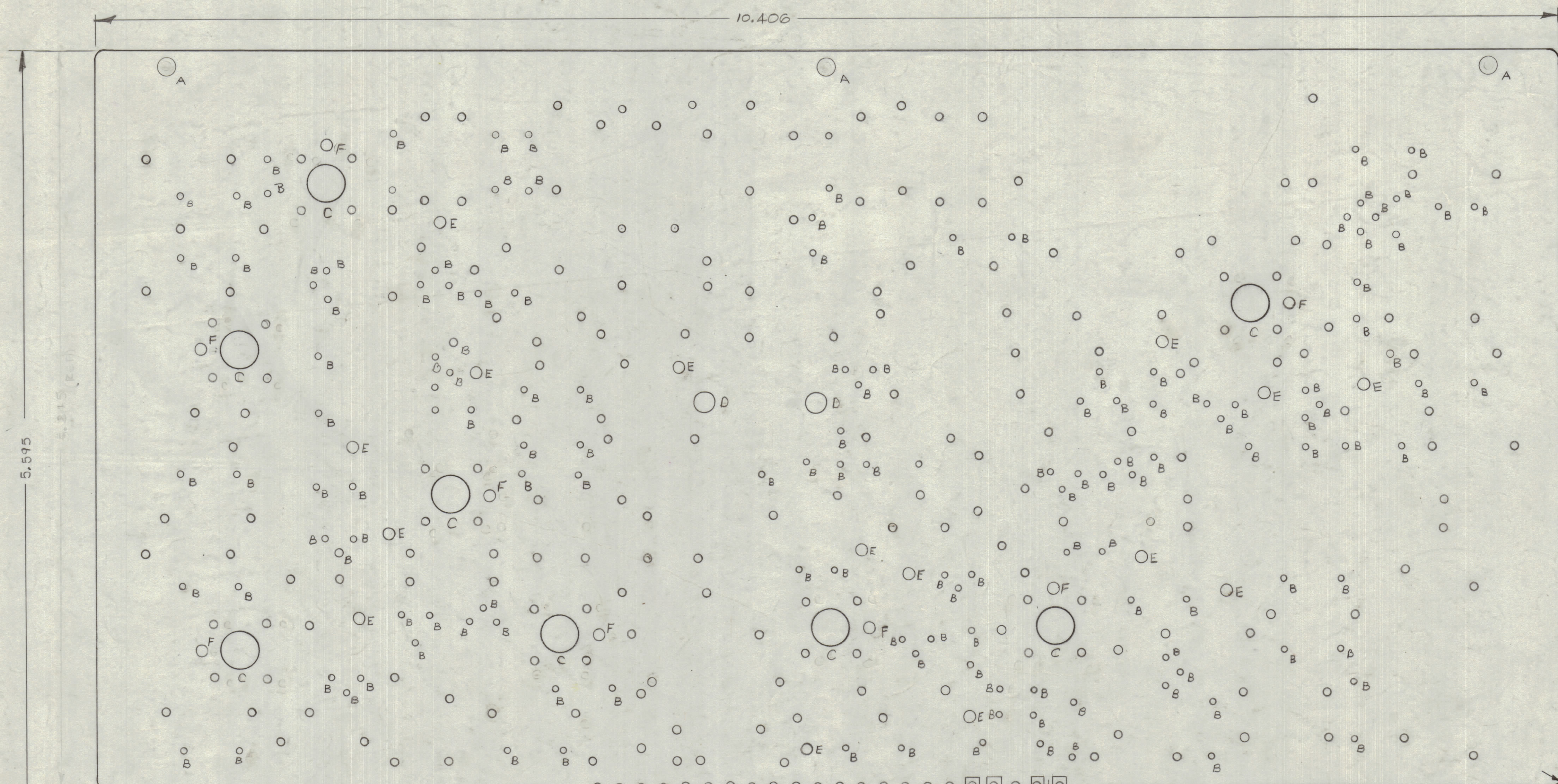


REVISIONS						
ZONE	SYM	DESCRIPTION	DATE	E.M.N. NO.	DRAFT	CHKD
X		EXP. RELEASE	5-13-67		CA	
		ORIGINAL RELEASE FOR PRODUCTION	5-13-67		DJL	
A		FABRICATION NOTE REVISED	6-19-67	14226		
B		SEE SH1 & 2 4(.052 HOLES DELETED) TERTIARY ADDED	9/14/68	14565	CA	
F.B		4 UNMARKED HOLES ADDED SEE SH1 & 2	5/10/69	16238	G.D.L.	
D		ADD CHART TO INCL .062 THICKNESS	5/10/78	21647	W.S.B.	

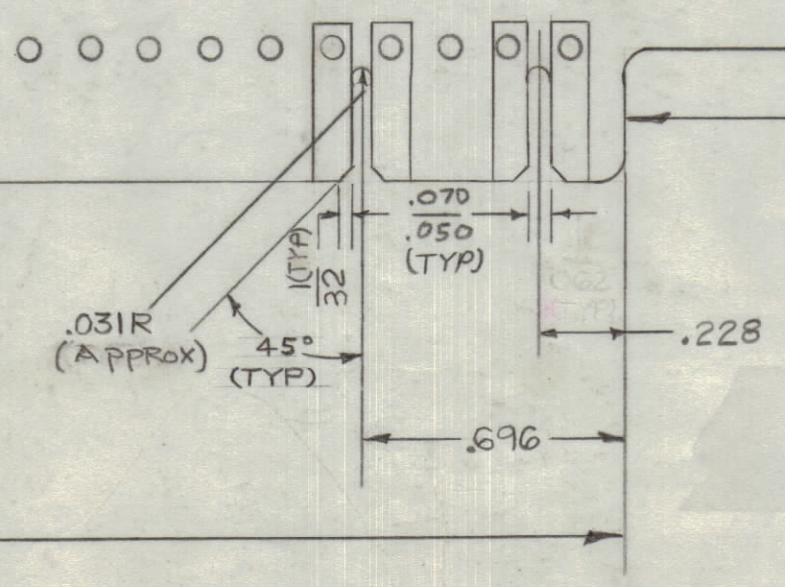


HOLE	DESCRIPTION	REQ'D
A	9/64 DR. (.140 DIA)	3
B	#60 DR. (.040 DIA)	138
C	17/64 DR. (.265 DIA)	8
D	9/64 DR. (.140 DIA)	2
E	#46 DR. (.081 DIA.)	15
F	1/16 DR. (.062 DIA.)	8
	UNMARKED #65 DR. (.052 DIA)	227

TMC PART NO.	THICKNESS
PC 205	.093 ± .0075
PC 205-1	.062 ± .0062

FABRICATION NOTE:
 TO BE MANUFACTURED IN ACCORDANCE WITH TMC SPEC. S-735, EXCEPT AS NOTED.
 1. MATERIAL G-10 EPOXY GLASS LAMINATED, 2 OUNCE COPPER CLAD BOTH SIDES. (SEE CHART FOR THICKNESS)
 2. CONDUCTOR PATTERN SHALL BE SOLDER COATED AS PER PP.13.2.1
 3. PLATING TO BE TIN-LEAD AS PER PP.13.2.2
 4. HOLES TO BE PLATED THROUGH AS PER PP.11.4 EXCEPT FOR 3"A HOLES.
 5. EDGE BOARD CONNECTORS (FINGERS) SHALL BE GOLD PLATED AS PER PP.10.1.
 6. KEY SLOTS TO BE DEBURRED.

(REF) CIRCUIT SIDE



.062 R (TYP) THRU-OUT

REQ'D	ITEM	PART NUMBER	DESCRIPTION	SYMBOL
15	1	TE-127-2	TERMINAL STUD	E

MATERIAL		THE TECHNICAL MATERIEL CORP.	
SEE NOTE		MAMARONECK, NEW YORK	
FINISH		PRINTED CIRCUIT BOARD	
		SYN 'A'	
QTY./UNIT	CMRA-1	A4216	ASS'Y. NO.
SCALE	2:1	A	

UNLESS OTHERWISE SPECIFIED DIMENSIONS ARE IN INCHES AND INCLUDE CHEMICALLY APPLIED OR PLATED FINISHES	DRAWN	DATE	FINAL APPROVAL	DATE
DIGITALS X ± .05 XX ± .01 XXX ± .005	Checked	5/10/68	AMM	5/10/68
TOLERANCES ± 1/64 ANGLES ± 6° 30'	Checked	5/10/68		
THE CONTENTS OF THIS DRAWING ARE THE EXCLUSIVE PROPERTY OF THE TECHNICAL MATERIEL CORP. ITS UNAUTHORIZED USE OR REPRODUCTION IN WHOLE OR IN PART IS STRICTLY FORBIDDEN.	ELECT. DES.	DATE	PC 205	D
	MECH. DES.	DATE		
	SHEET	3023		
	REV. LTR.			

NOTES

PC205
D