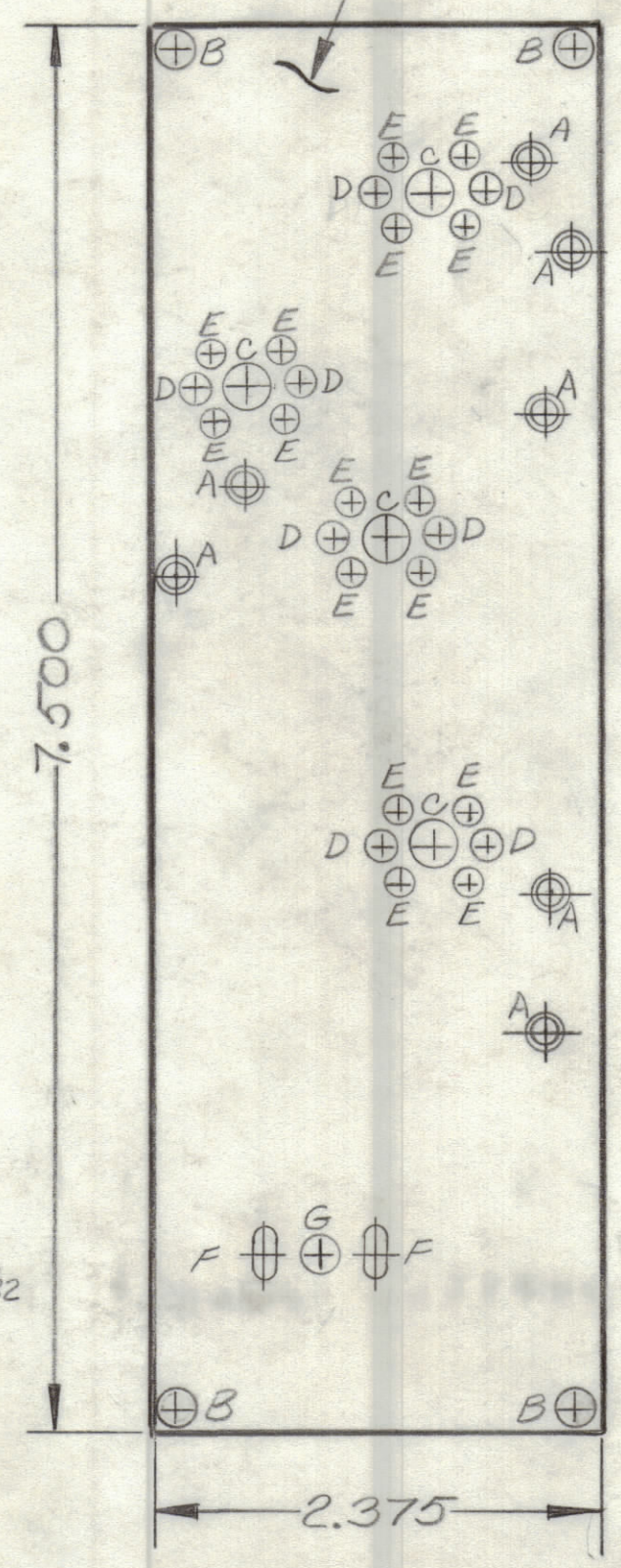


REVISIONS						
ZONE	LTR	DESCRIPTION	DATE	E.M.N.NO	DRAFT	CHKD APPD
	0	ORIGINAL RELEASE FOR PRODUCTION	11/14/72		W	
	A	1/8 SLOT WAS 1/4 SLOT	9-30-73	20987	W	W

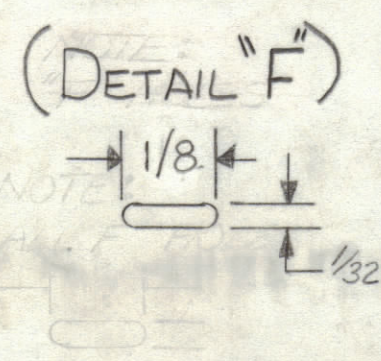
THIS IS NOT ORIGINAL ARTWORK  
THIS IS TO BE USED FOR REF ONLY



CIRCUIT SIDE



① MOUNT IN ALL "A" HOLES (7 REQ)



FABRICATION NOTES:  
TO BE MANUFACTURED IN ACCORDANCE WITH TMC SPEC S375 & SPEC.  
1. OVERALL MATERIAL THICKNESS .062 ± .006 AS PER PP 3.1, 3.2  
2. CONDUCTOR PATTERN TO BE COPPER FOIL AS PER PP 4.1  
PLATING TO BE TIN LEAD AS PER PP 13.2.2, 13.2.1  
3. ALL HOLES TO BE PLATED THRU AS PER 8.9.5  
4. MATERIAL TO BE GIO GLASS EPOXY, LAMINATE  
2 OZ. COPPER CLAD, BOTH SIDES

HOLE	DESCRIPTION	REQ
A	.081 DIA.	7
B	9/64 DIA	4
C	9/32 DIA	4
D	.090 DIA	8
E	.052 DIA	16
F	SEE DETAIL	2
G	5/32 DIA	1
UNMARKED HOLES .042 DIA		

QTY. REQ.	ITEM	PART NO.	DESCRIPTION	SYMBOL
7	1	TE 127-2	TERMINAL, STUD	A

LIST OF MATERIAL

UNLESS OTHERWISE SPECIFIED DIMENSIONS ARE IN INCHES AND INCLUDE CHEMICALLY APPLIED OR PLATED FINISHES	FINAL APPROVAL <i>[Signature]</i> DATE 11/14/72
TOLERANCES ON	MECH. DES. <i>[Signature]</i> DATE 11/13/72
DECIMALS	ELECT. DES. <i>[Signature]</i> DATE
.X ± .05	CHECKED
.XX ± .01	DATE
.XXX ± .005	DRAWN <i>[Signature]</i> DATE 11/13/72

THE TECHNICAL MATERIEL CORP.  
MAMARONECK, NEW YORK

PRINTED CIRCUIT BD  
(FOURTH MIXER)

1	RSU-1	A4925
QTY / UNIT	MODEL USED ON	ASS'Y NO.
APPLICATION		
CODE		
NOTICE TO PERSONS RECEIVING THIS DRAWING		
THE TECHNICAL MATERIEL CORPORATION claims proprietary right in the material disclosed hereon. This drawing is issued in confidence for engineering information only and may not be reproduced or used to manufacture anything shown hereon without permission from THE TECHNICAL MATERIEL CORPORATION to the user. This drawing is loaned for mutual assistance and is subject to recall at any time.		

MATERIAL	SIZE	CODE IDENT.NO.	DWG NO.	ISSUE
FINISH	C	82679	PC 650	A
SCALE		SHEET		OF