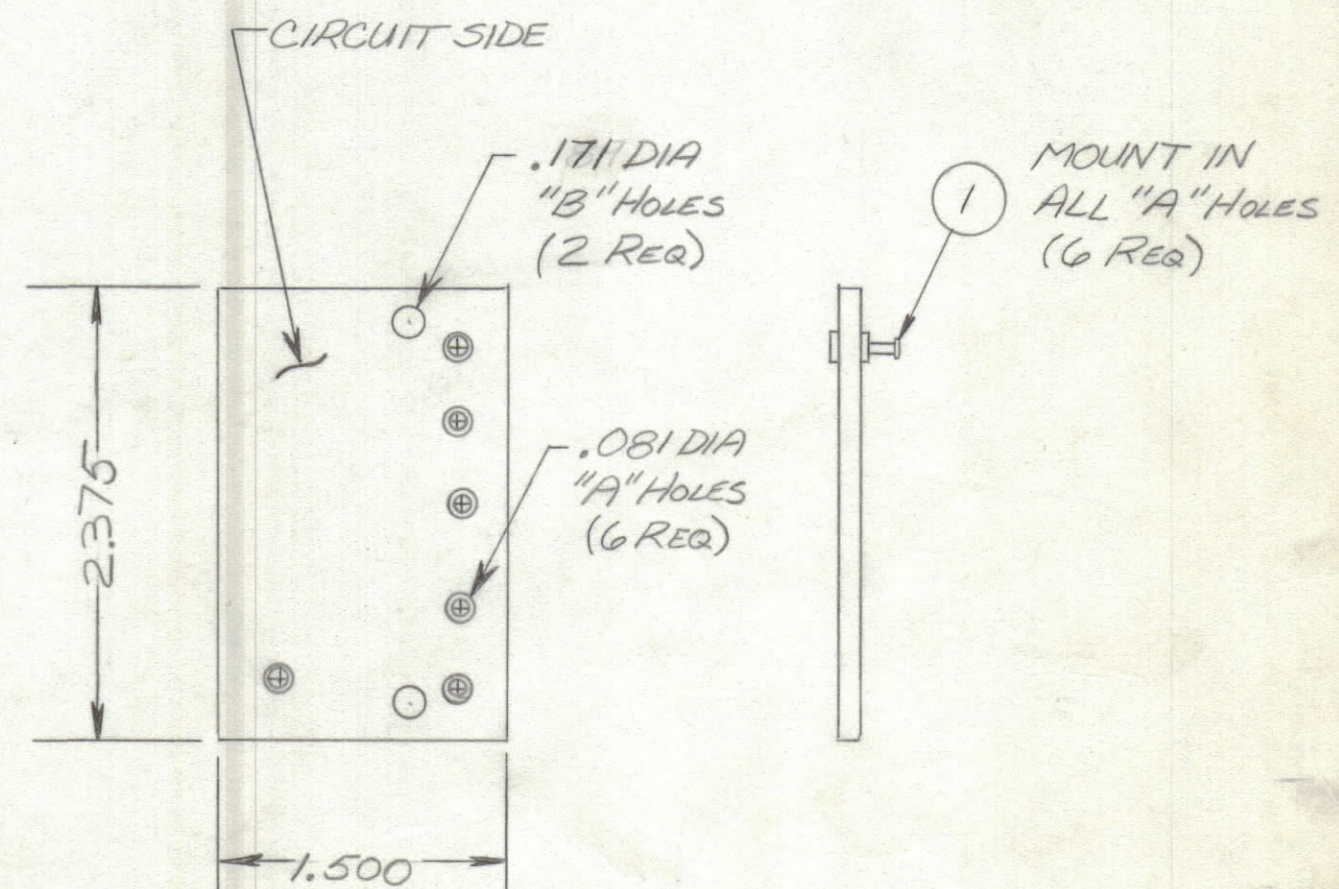


REVISIONS						
ZONE	LTR	DESCRIPTION	DATE	E.M.N.NO	DRAFT	CHKD APPD
	Ø	ORIGINAL RELEASE FOR PRODUCTION	3/27/73		Ø	

THIS IS NOT ORIGINAL ARTWORK
THIS IS TO BE USED FOR REFERENCE ONLY



ALL UNMARKED HOLES TO BE .042 DIA.

FABRICATION NOTES:

- TO BE MANUFACTURED IN ACCORDANCE WITH TMC SPEC 5375 & SPEC
- OVERALL MATERIAL THICKNESS .062 ± .0062 AS PER pp 3.1, 3.2
 - CONDUCTOR PATTERN TO BE COPPER FOIL AS PER pp 4.1
PLATING TO BE TIN LEAD AS PER pp 13.2.2, 13.2.1
 - MATERIAL : G10 GLASS EPOXY LAMINATE 2 OZ COPPER CLAD
THIS IS A SINGLE SIDED BOARD

QTY. REQ.	ITEM	PART NO.	DESCRIPTION	SYMBOL
6	1	TE127-2	TERMINAL, STUD	A

LIST OF MATERIAL

UNLESS OTHERWISE SPECIFIED DIMENSIONS ARE IN INCHES AND INCLUDE CHEMICALLY APPLIED OR PLATED FINISHES		FINAL APPROVAL	DATE
TOLERANCES ON		MECH. DES.	DATE
DECIMALS	FRACTIONS	ELECT. DES.	DATE
.X ± .05	± 1/64	CHECKED	DATE
.XX ± .01	ANGLES	DRAWN	DATE
.XXX ± .005	± 0° -30'		

THE TECHNICAL MATERIEL CORP.
MAMARONECK, NEW YORK

PRINTED CIRCUIT BD.
17MHZ OSC RELAY CONTROL

QTY / UNIT	MODEL USED ON	ASS'Y NO.
	RSU-1	
APPLICATION		
CODE		
MATERIAL		
FINISH		

NOTICE TO PERSONS RECEIVING THIS DRAWING
THE TECHNICAL MATERIEL CORPORATION claims proprietary right in the material disclosed hereon. This drawing is issued in confidence for engineering information only and may not be reproduced or used to manufacture anything shown hereon without permission from THE TECHNICAL MATERIEL CORPORATION to the user. This drawing is loaned for mutual assistance and is subject to recall at any time.

SIZE	CODE IDENT.NO.	DWG NO.	ISSUE
C	82679	PC 673	Ø
SCALE		SHEET OF	