

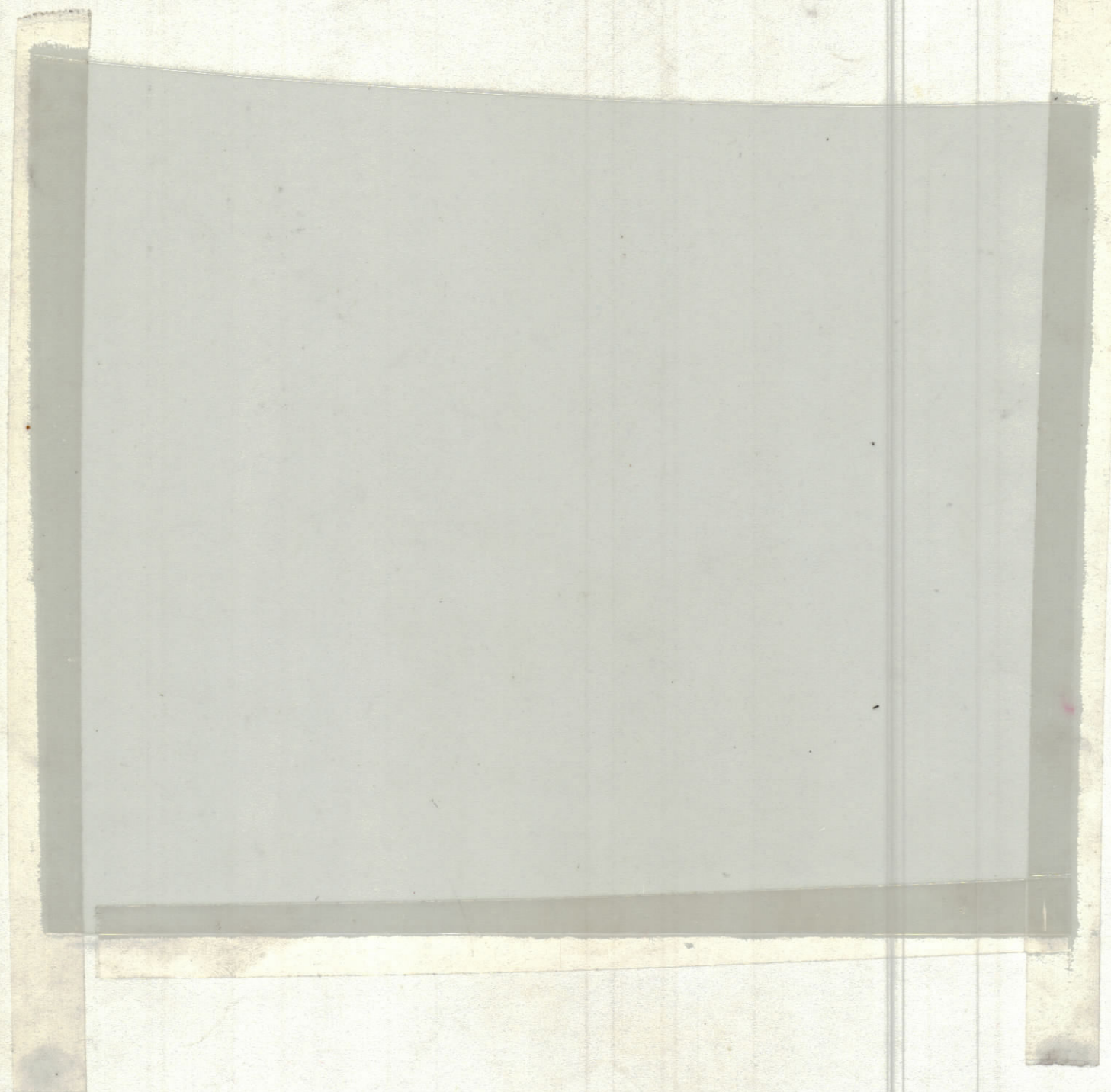
4

3

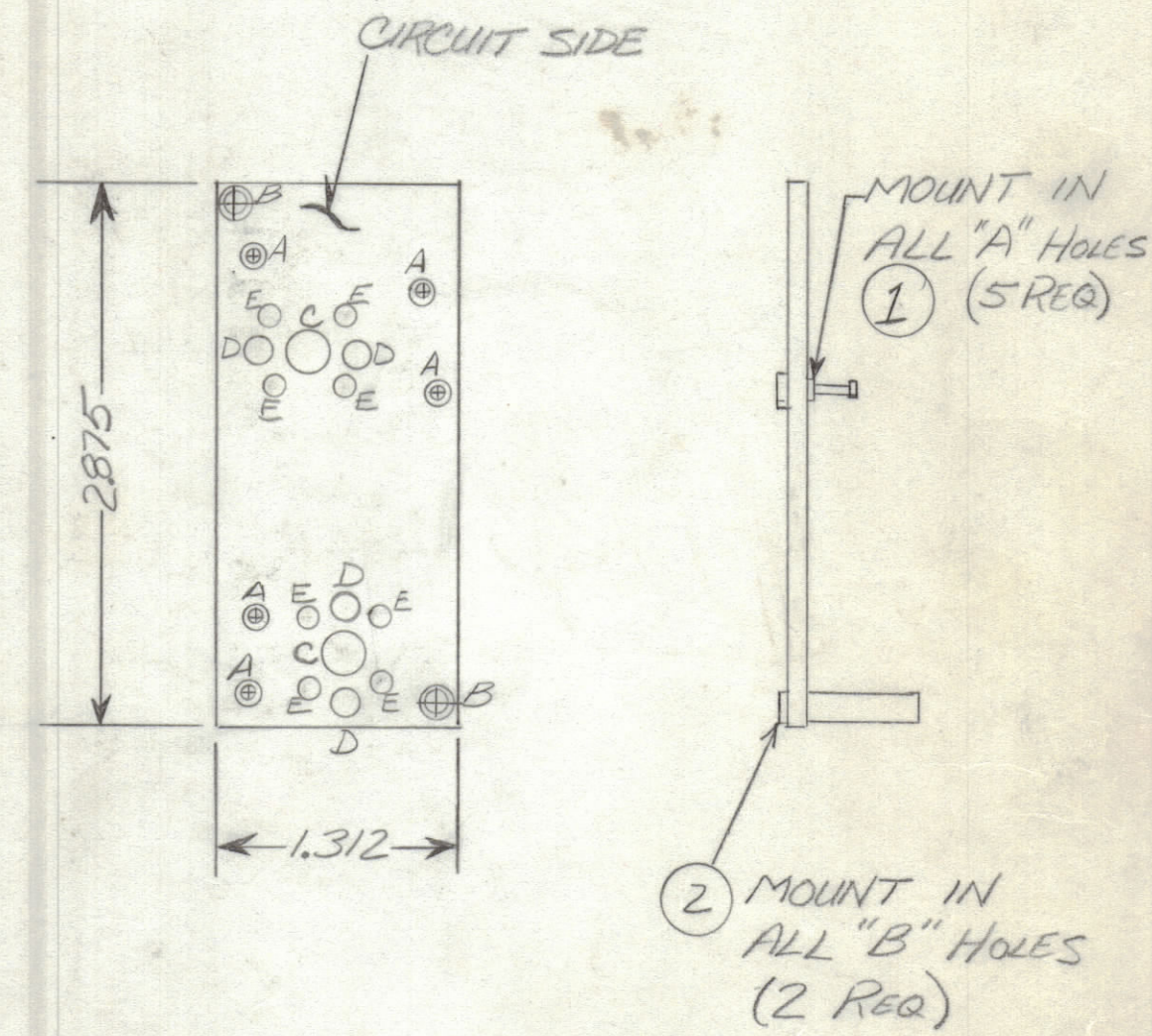
2

1

REVISIONS						
ZONE	LTR	DESCRIPTION	DATE	E.M.N.NO	DRAFT	CHKD APPD
	0	ORIGINAL RELEASE FOR PRODUCTION	3/27/73		CL	



HOLE	DESCRIPTION	REQ
A	.081 DIA	5
B	.189 DIA	2
C	9/32 DIA	2
D	.090 DIA	4
E	.062 DIA	8
UNMARKED HOLES .052 DIA		



FABRICATION NOTES:
 TO BE MANUFACTURED IN ACCORDANCE WITH TMC SPEC 5735 & SPEC
 1. OVERALL MATERIAL THICKNESS .062 ± .006 AS PER PP 3.1, 3.2.1
 2. CONDUCTOR PATTERN TO BE COPPER FOIL AS PER PP 4.1
 PLATING TO BE TIN LEAD AS PER PP 13.2.2, 13.2.1
 3. MATERIAL TO BE G10 GLASS EPOXY, LAMINATE 2 OZ COPPER
 THIS IS A SINGLE SIDED BOARD

QTY. REQ.	ITEM	PART NO.	DESCRIPTION	SYMBOL
2	2	TE108-29	STANDOFF, RIVET	B
5	1	TE127-2	TERMINAL, STUD	A

LIST OF MATERIAL

UNLESS OTHERWISE SPECIFIED DIMENSIONS ARE IN INCHES AND INCLUDE CHEMICALLY APPLIED OR PLATED FINISHES	FINAL APPROVAL <i>[Signature]</i>	DATE 23 MAR 73
TOLERANCES ON	MECH. DES. <i>[Signature]</i>	DATE 3/21/73
DECIMALS .X ± .05 .XX ± .01 .XXX ± .005	ELECT. DES. <i>[Signature]</i>	DATE 3/21/73
FRACTIONS ± 1/64 ANGLES ± 0° -30'	CHECKED	DATE
	DRAWN <i>[Signature]</i>	DATE 3/21/73

THE TECHNICAL MATERIEL CORP. MAMARONECK, NEW YORK			
17 MHz TUNING CKT (PRINTED CIRCUIT BD)			
SIZE	CODE IDENT.NO.	DWG NO.	ISSUE
C	82679	PC674	0
SCALE	SHEET		OF

1	KIT 375	AX746
QTY / UNIT	MODEL USED ON	ASS'Y NO.
APPLICATION		
CODE		
NOTICE TO PERSONS RECEIVING THIS DRAWING		
THE TECHNICAL MATERIEL CORPORATION claims proprietary right in the material disclosed hereon. This drawing is issued in confidence for engineering information only and may not be reproduced or used to manufacture anything shown hereon without permission from THE TECHNICAL MATERIEL CORPORATION to the user. This drawing is loaned for mutual assistance and is subject to recall at any time.		
MATERIAL		
FINISH		

4

3

2

1

PC674
0
B