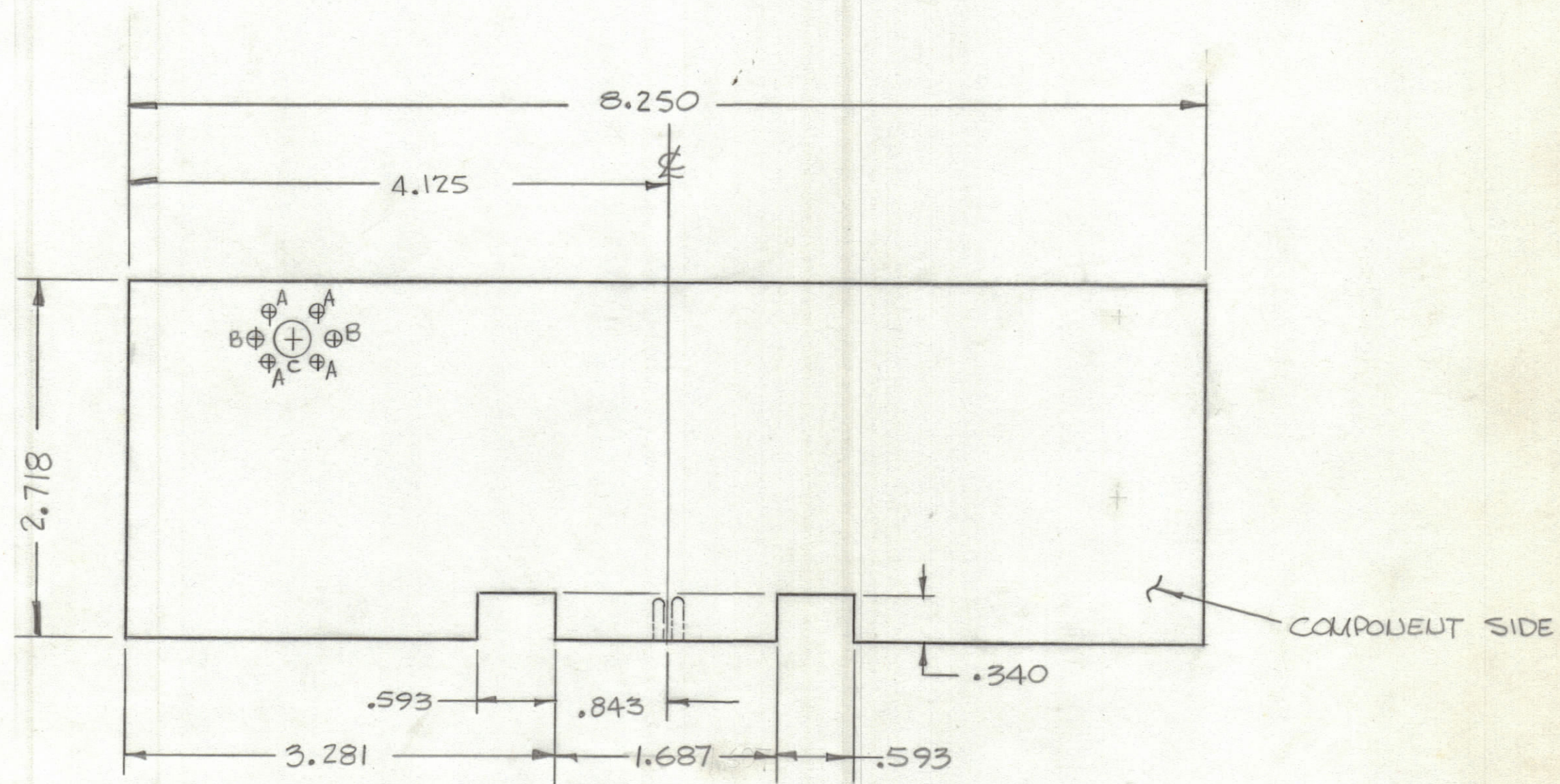


REVISIONS						
ZONE	LTR	DESCRIPTION	DATE	E.M.N.NO	DRAFT	CHKD APPD



FABRICATION NOTES:

TO BE MANUFACTURED IN ACCORDANCE WITH TMC SPEC S735 AND SPECIFICALLY

1. OVERALL MATERIAL THICKNESS $.062 \pm .0062$ AS PER (pp 3.1, 3.2)
2. CONDUCTOR PATTERN TO BE COPPER FOIL AS PER (pp 4.1) PLATING TO BE TIN LEAD AS PER (pp 13.2.2, 13.2.1)
3. MIN FINISHED CONDUCTOR WIDTH SHALL NOT BE LESS THAN $.020$
MAX FINISHED CONDUCTOR WIDTH SHALL BE DETERMINED BY THE ARTWORK LINE WIDTH $\pm .010$
4. ALL HOLES TO BE PLATED THRU AS PER (pp 8.9.5). UNLESS OTHERWISE SPECIFIED
5. EDGE BOARD CONNECTORS (FINGER) SHALL BE GOLD PLATED (pp 10)
6. ALL UNMARKED HOLES TO BE NO. 60 ($.040$) DRILL (SEE INDIVIDUAL ARTWORK FOR LOCATION)
7. MATERIAL: G10 GLASS EPOXY, LAMINATE 2 OZ. COPPER CLAD, BOTH SIDES

Hole	Description	Req.
A	.052 DIA	4
B	.090 DIA	2
C	9/32 DIA	1

UNMARKED Holes .040 DIA.

(REF CK2049) Z118

1	BHASIS	A4965
QTY / UNIT	MODEL USED ON	ASS'Y NO.
APPLICATION		
CODE		
<p>NOTICE TO PERSONS RECEIVING THIS DRAWING THE TECHNICAL MATERIEL CORPORATION claims proprietary right in the material disclosed herein. This drawing is issued in confidence for engineering information only and may not be reproduced or used to manufacture anything shown hereon without permission from THE TECHNICAL MATERIEL CORPORATION to the user. This drawing is loaned for mutual assistance and is subject to recall at any time.</p>		

UNLESS OTHERWISE SPECIFIED DIMENSIONS ARE IN INCHES AND INCLUDE CHEMICALLY APPLIED OR PLATED FINISHES	
TOLERANCES ON	
DECIMALS	FRACTIONS
.X $\pm .05$	$\pm 1/64$
.XX $\pm .01$	ANGLES
.XXX $\pm .005$	$\pm 0^\circ -30'$
MATERIAL	
FINISH	

QTY. REQ.	ITEM	PART NO.	DESCRIPTION	SYMBOL
LIST OF MATERIAL				
<p>FINAL APPROVAL _____ DATE _____</p> <p>MECH. DES. _____ DATE _____</p> <p>ELECT. DES. _____ DATE _____</p> <p>CHECKED <i>R W W</i> _____ DATE _____</p> <p>DRAWN <i>R W W</i> _____ DATE _____</p>				
<p>THE TECHNICAL MATERIEL CORP. MAMARONECK, NEW YORK</p> <p>PRINTED CIRCUIT BD (BFO)</p>				
SIZE	CODE	IDENT. NO.	DWG. NO.	ISSUE
C	82679		PC691	
SCALE				SHEET OF