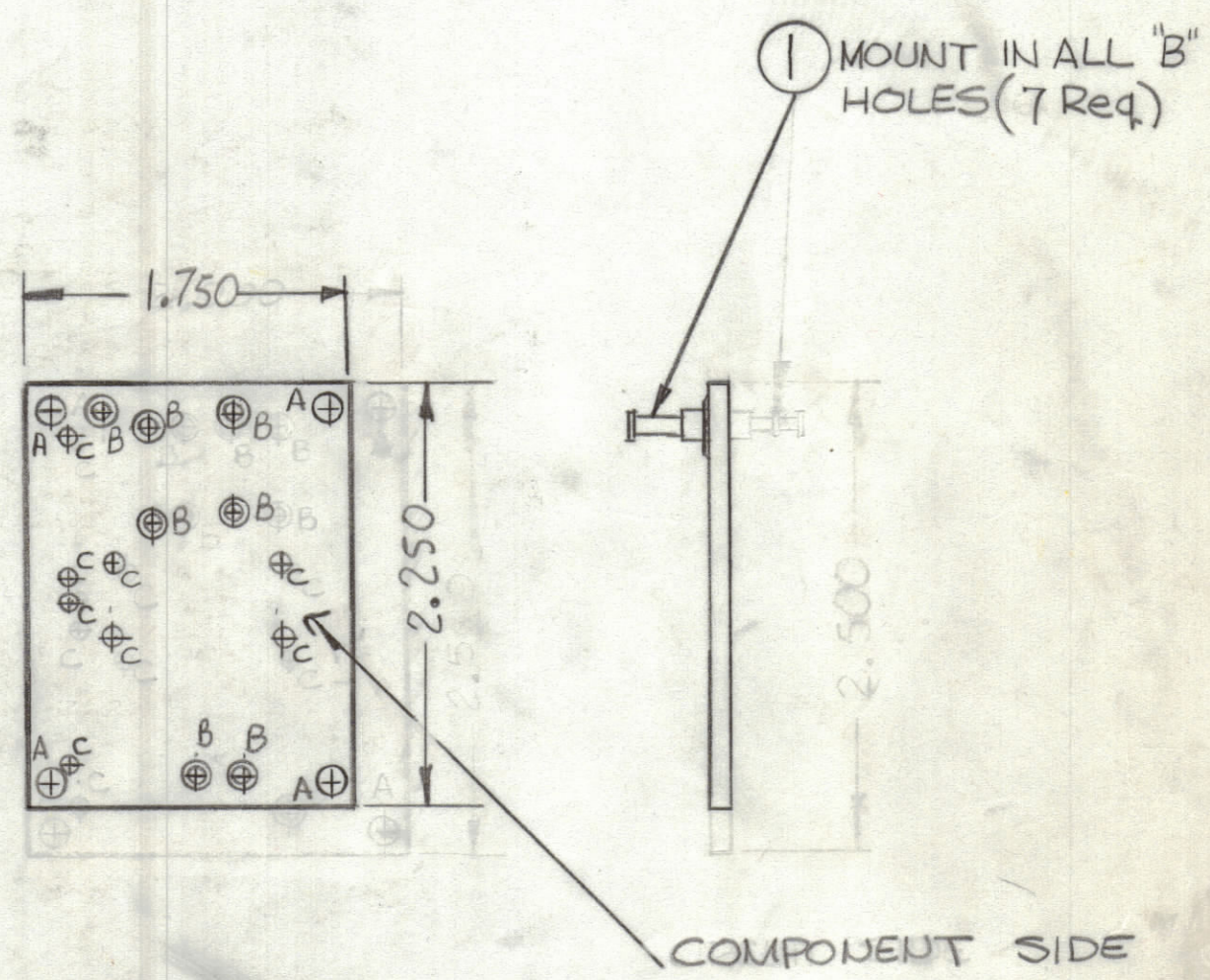
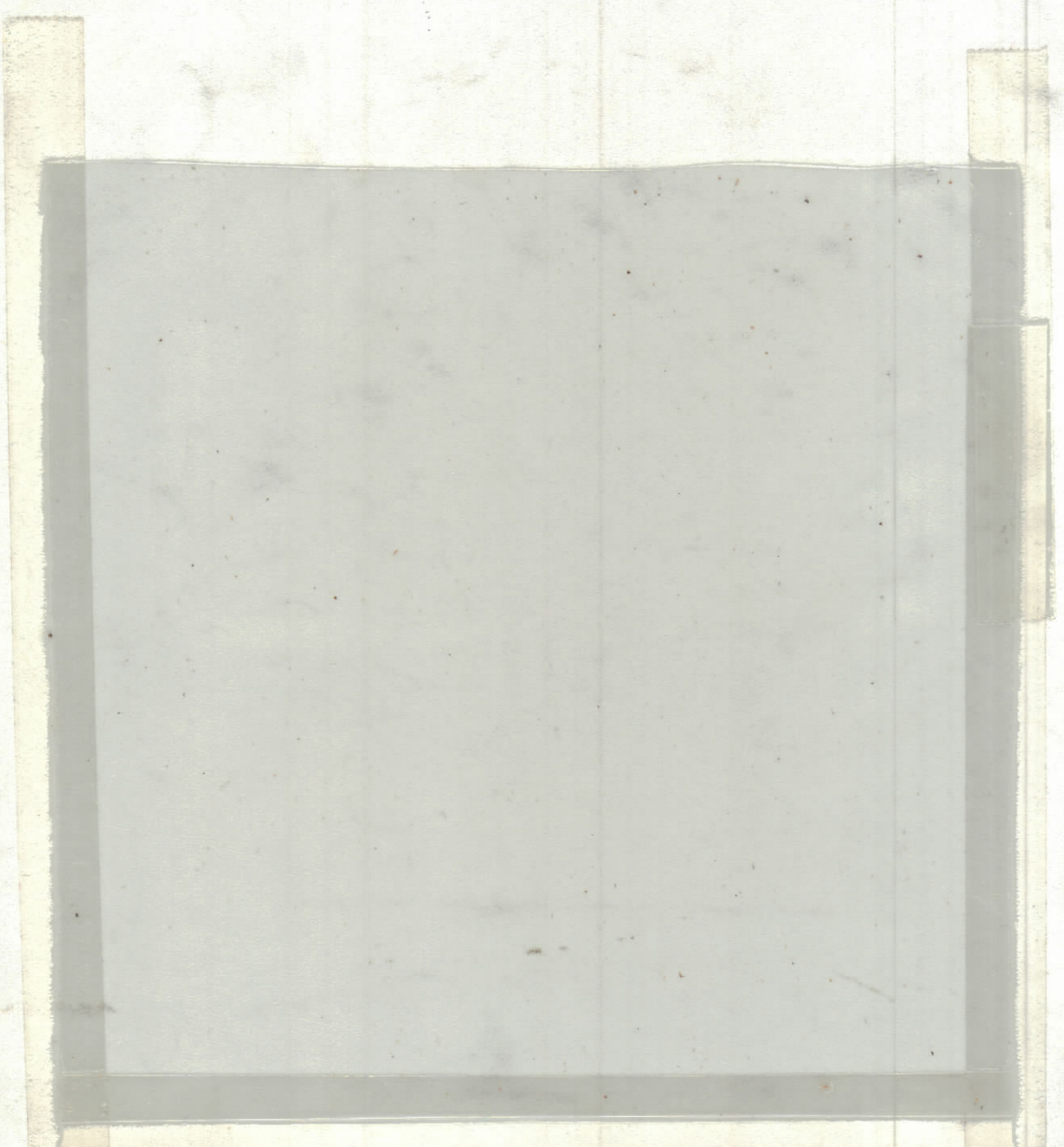


REVISIONS						
ZONE	LTR	DESCRIPTION	DATE	E.M.N.NO	DRAFT	CHKD APPD
	Ø	ORIGINAL RELEASE FOR PRODUCTION	8/27/73		Ch	
	A	Machining View Clarified	12-19-73	21113	Ch	EP/JP



Hole	Description	Req
A	11/64 DIA	4
B	.092 DIA	7
C	.062 DIA	8
UNMARKED HOLES .042 DIA		

THIS IS NOT ORIGINAL ARTWORK
THIS IS TO BE USED FOR REF ONLY

- TO BE MANUFACTURED IN ACCORDANCE WITH TMC SPEC 5735 & SPEC
1. OVERALL MATERIAL THICKNESS .062 ± .006 AS PER pp 3.1, 3.2
 2. CONDUCTOR PATTERN TO BE COPPER FOIL AS PER pp 4.1
PLATING TO BE TIN LEAD AS PER pp 13.2.2, 13.2.1
 3. MATERIAL: G10 GLASS EPOXY, LAMINATE 2 OZ COPPER CLAD
 4. THIS IS A SINGLE SIDED BOARD.

(REF CK2050)

QTY. REQ.	ITEM	PART NO.	DESCRIPTION	SYMBOL
7	1	TE127-6	TERMINAL, STUD	B

LIST OF MATERIAL

UNLESS OTHERWISE SPECIFIED DIMENSIONS ARE IN INCHES AND INCLUDE CHEMICALLY APPLIED OR PLATED FINISHES

TOLERANCES ON

DECIMALS	FRACTIONS
.X ± .05	± 1/64
.XX ± .01	ANGLES
.XXX ± .005	± 0° -30'

FINAL APPROVAL	DATE
MECH. DES.	DATE
ELECT. DES.	DATE
CHECKED	DATE
DRAWN	DATE

THE TECHNICAL MATERIEL CORP.
MAMARONECK, NEW YORK

PRINTED CIRCUIT BD
("C" SENSING)

1	ATSA-3	A4967
QTY / UNIT	MODEL USED ON	ASS'Y NO.
APPLICATION		
CODE		

MATERIAL	FINISH	SIZE	CODE IDENT. NO.	DWG NO.	ISSUE
		C	82679	PC693	A
SCALE				SHEET	OF

NOTICE TO PERSONS RECEIVING THIS DRAWING

THE TECHNICAL MATERIEL CORPORATION claims proprietary right in the material disclosed hereon. This drawing is issued in confidence for engineering information only and may not be reproduced or used to manufacture anything shown hereon without permission from THE TECHNICAL MATERIEL CORPORATION to the user. This drawing is loaned for mutual assistance and is subject to recall at any time.

PC693 A B