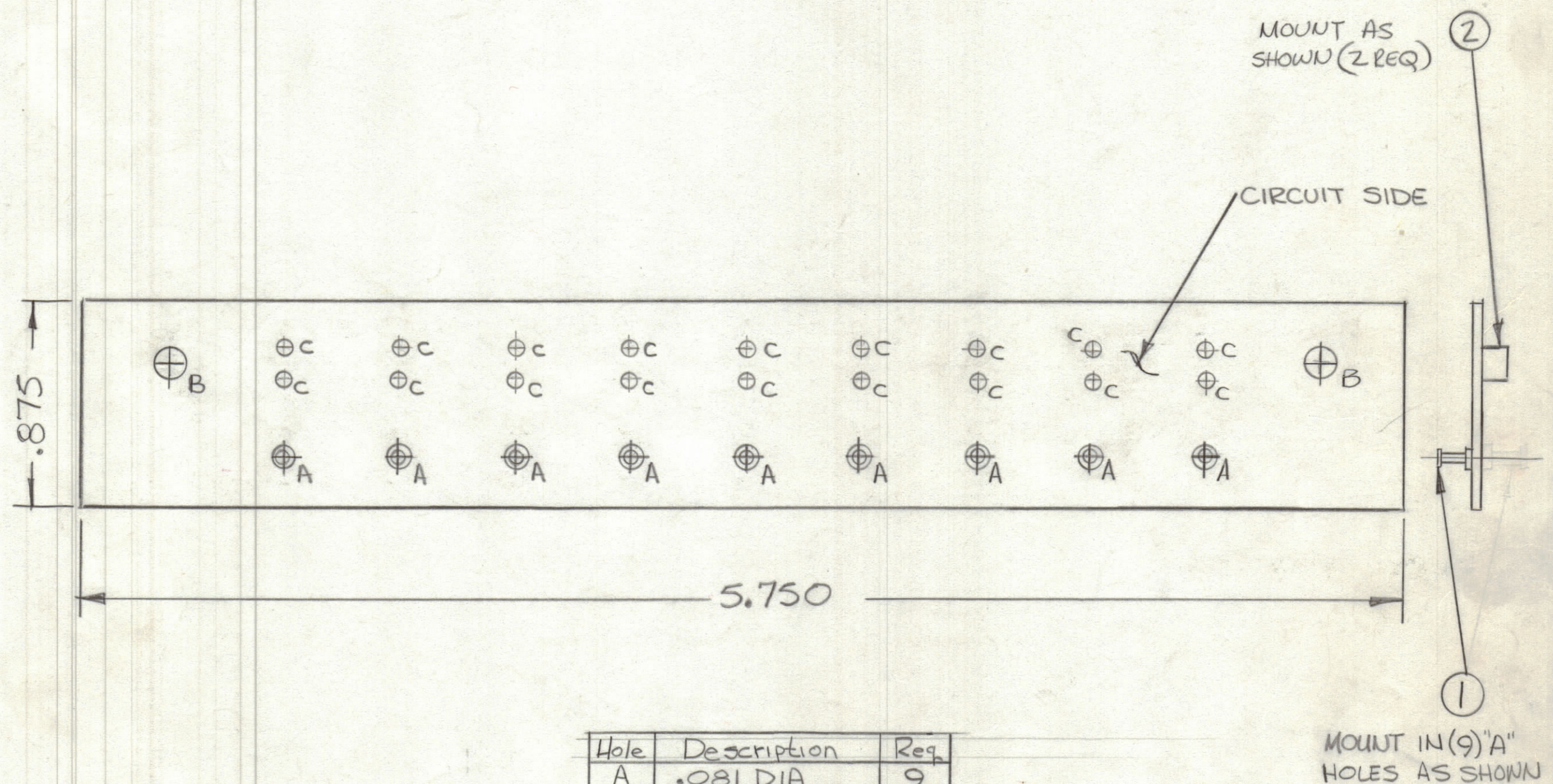


REVISIONS						
ZONE	LTR	DESCRIPTION	DATE	E.M.N.NO	DRAFT	CHKD APPD
	Ø	ORIGINAL RELEASE FOR PRODUCTION	1/2/75		Ch	
A		TO EXPAND APPLICATION	11/1/77	21591	KP	Q/B * X



Hole	Description	Req.
A	.081 DIA	9
B	.189 DIA	2
C	.062 DIA	18
	Unmarked Holes .042 DIA	

THIS IS NOT ORIGINAL ARTWORK  
THIS IS TO BE USED FOR REF ONLY

MACHINING SCALE 2:1

- OVERALL MATERIAL THICKNESS .062 ± .006 AS PER (pp 3.1, 3.2)
- CONDUCTOR PATTERN TO BE COPPER FOIL AS PER (pp 4.1) PLATING TO BE TIU LEAD AS PER (pp 13.2.2, 13.2.1)
- MATERIAL TO BE GIO GLASS EPOXY, LAMINATE 2 OZ COPPER CLAD SINGLE SIDE

QTY. REQ.	ITEM	PART NO.	DESCRIPTION	SYMBOL
2	Z	TE164-6	TERMINAL, STANDOFF	B
9	I	TE127-2	TERMINAL, STUD	A

LIST OF MATERIAL

FINAL APPROVAL \* Q/B DATE 12/31/74  
MECH. DES. F. IANNUZZI DATE 12-31-74  
ELECT. DES. DATE

CHECKED DATE  
DRAWN DATE 11-12-74

UNLESS OTHERWISE SPECIFIED DIMENSIONS ARE IN INCHES AND INCLUDE CHEMICALLY APPLIED OR PLATED FINISHES

TOLERANCES ON  
DECIMALS .X ± .05 .XX ± .01 .XXX ± .005  
FRACTIONS ± 1/64 ANGLES ± 0° -30'

MATERIAL  
FINISH

THE TECHNICAL MATERIEL CORP.  
MAMARONECK, NEW YORK

PRINTED CIRCUIT BD  
INDICATOR CIRCUIT

SIZE	CODE IDENT. NO.	DWG NO.	ISSUE
C	82679	PC719	A

SCALE SHEET OF

QTY / UNIT	MODEL USED ON	ASS'Y NO.
1	AX5226	A5604
1	HFL100	A5604

APPLICATION  
CODE

NOTICE TO PERSONS RECEIVING THIS DRAWING  
THE TECHNICAL MATERIEL CORPORATION claims proprietary right in the material disclosed hereon. This drawing is issued in confidence for engineering information only and may not be reproduced or used to manufacture anything shown hereon without permission from THE TECHNICAL MATERIEL CORPORATION to the user. This drawing is loaned for mutual assistance and is subject to recall at any time.