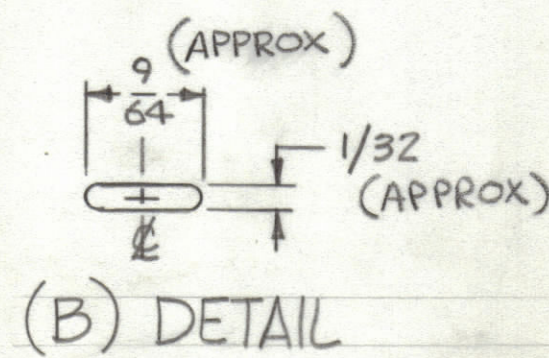
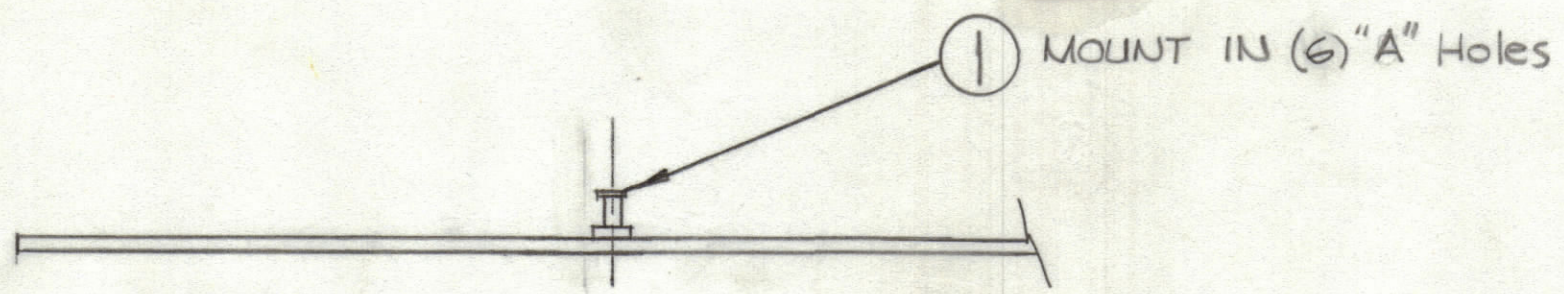
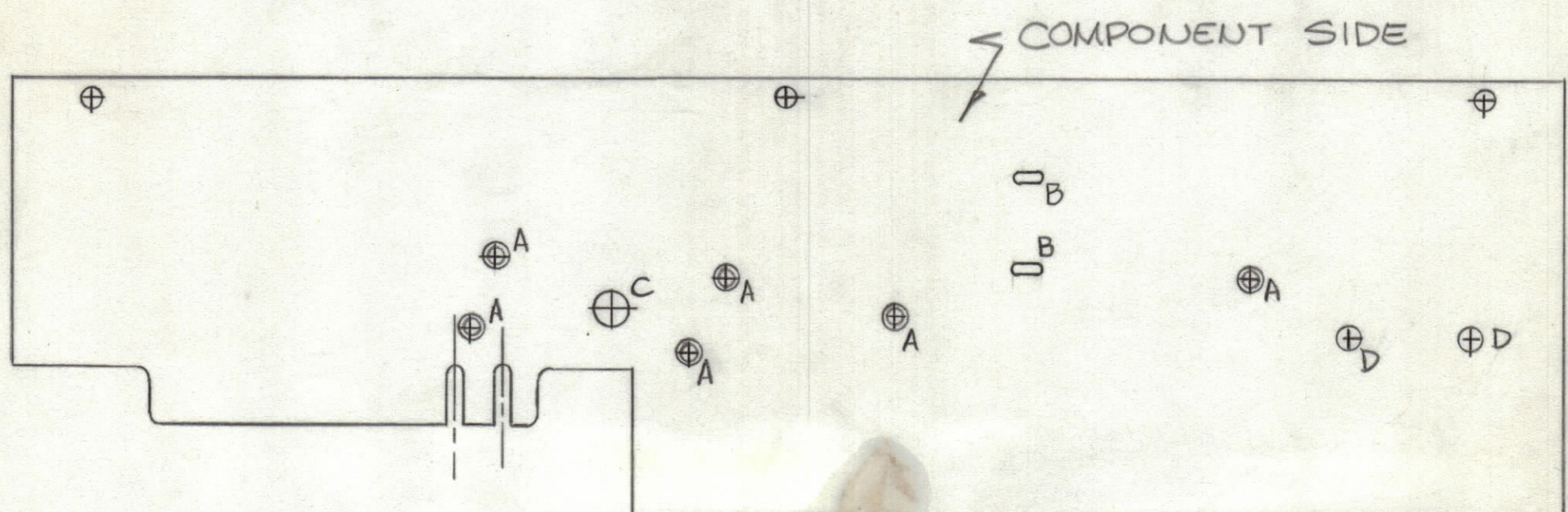


REVISIONS						
ZONE	LTR	DESCRIPTION	DATE	E.M.N.NO	DRAFT	CHKD APPD
	Ø	ORIGINAL RELEASE FOR PRODUCTION	3/4/75		CL	



HOLE	DESCRIPTION	REQ
A	.081 DIA	6
B	SEE DETAIL	2
C	3/16 DIA	1
D	11/64	2



FOR FABRICATION SEE S1125
 1. EXCEPT FOR HOLES SHOWN
 2. HOLES WILL NOT BE PLATED-THRU-

THIS IS NOT ORIGINAL ARTWORK
 THIS IS TO BE USED FOR REF ONLY

1	KIT 403	A5619
QTY / UNIT	MODEL USED ON	ASS'Y NO.
APPLICATION		
CODE		
<small>NOTICE TO PERSONS RECEIVING THIS DRAWING</small> <small>THE TECHNICAL MATERIEL CORPORATION claims proprietary right in the material disclosed hereon. This drawing is issued in confidence for engineering information only and may not be reproduced or used to manufacture anything shown hereon without permission from THE TECHNICAL MATERIEL CORPORATION to the user. This drawing is loaned for mutual assistance and is subject to recall at any time.</small>		
MATERIAL		
FINISH		

4	1	TE127-2	TERMINAL, STUD	A
QTY. REQ.	ITEM	PART NO.	DESCRIPTION	SYMBOL
LIST OF MATERIAL				
<small>UNLESS OTHERWISE SPECIFIED DIMENSIONS ARE IN INCHES AND INCLUDE CHEMICALLY APPLIED OR PLATED FINISHES</small>		<small>FINAL APPROVAL</small> 	<small>DATE</small> 3/4/75	THE TECHNICAL MATERIEL CORP. MAMARONECK, NEW YORK PRINTED CIRCUIT BD., (OUTPUT CIRCUIT)
<small>TOLERANCES ON</small> DECIMALS .X ± .05 .XX ± .01 .XXX ± .005 FRACTIONS ± 1/64 ANGLES ± 0° -30'		<small>MECH. DES.</small> 	<small>DATE</small> 	
		<small>ELECT. DES.</small> 	<small>DATE</small> 	
		<small>CHECKED</small> 	<small>DATE</small> 3-4-75	
		<small>DRAWN</small> 	<small>DATE</small> 2-11-75	<small>ISSUE</small> Ø
SIZE	CODE	IDENT. NO.	DWG. NO.	
C	82679		PC728	
SCALE			SHEET	OF