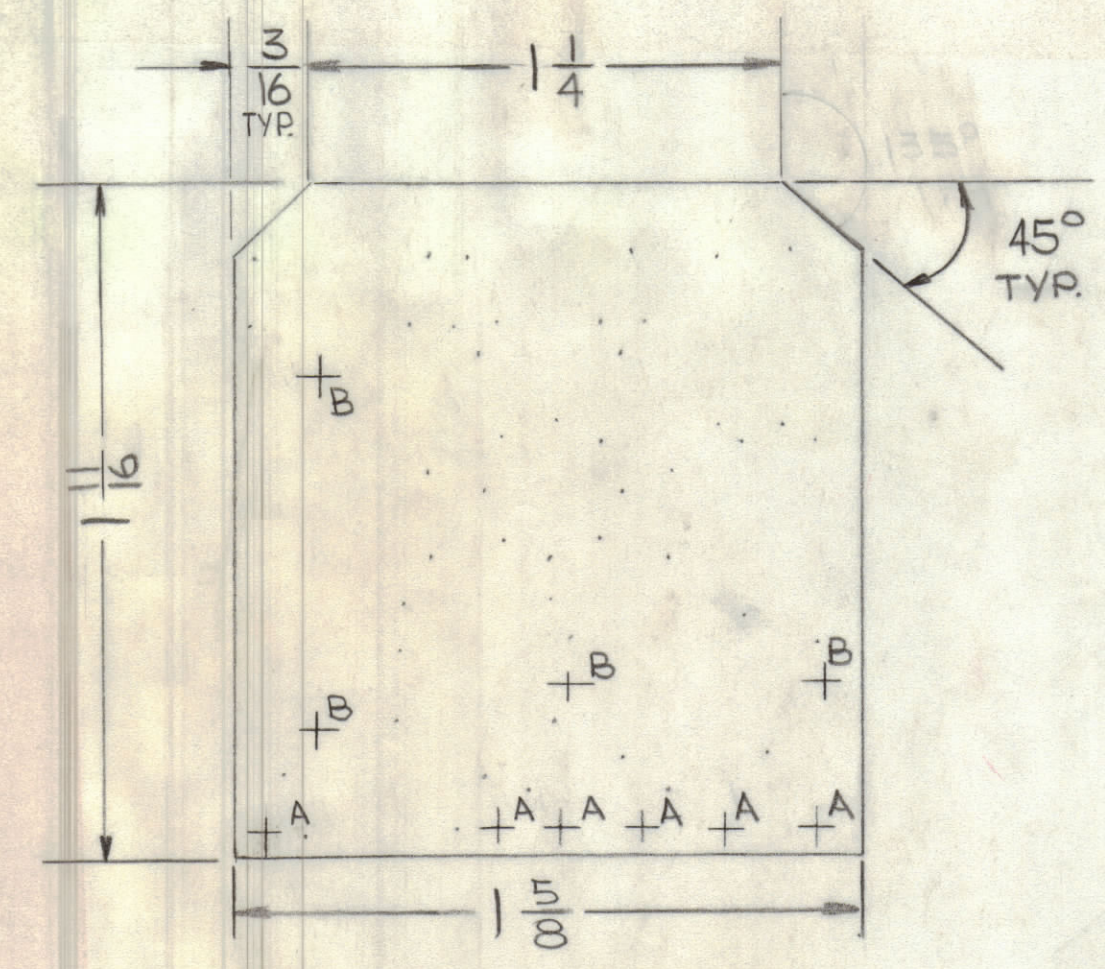


REVISIONS						
ZONE	LTR	DESCRIPTION	DATE	E.M.N.NO	DRAFT	CHKD APPD
	X	EXP. RELEASE	3-24-75		F.I	



HOLE	DIMENTION	REQ
A	.081 DIA.	6
B	.062 DIA.	4
ALL UNMARKED HOLES .042		

MACHINING SCALE 2:1

THIS IS NOT ORIGINAL ARTWORK
THIS IS TO BE USED FOR REF ONLY

TO BE MANUFACTURED IN ACCORDANCE WITH TMC SPEC S735 AND SPECIFICALLY:

- ① OVERALL MATERIAL THICKNESS $.062 \pm .0062$ AS PER (PP 3.1, 3.2)
- ② CONDUCTOR PATTERN TO BE COPPER FOIL AS PER (PP 4.1)
PLATING TO BE TIN LEAD AS PER (PP 13.2.2, 13.2.1)
- ③ MIN FINISHED CONDUCTOR WIDTH SHALL NOT BE LESS THAN $.020$
MAX FINISHED CONDUCTOR WIDTH SHALL BE DETERMINED BY THE ARTWORK LINE WIDTH $\pm .010$
- ④ MATERIAL: G10 GLASS EPOXY, LAMINATE 20Z COPPER CLAD, (SINGLE SIDE).

QTY / UNIT	MODEL USED ON	ASS'Y NO.
1	ATLA-2.5k	AS624
APPLICATION		
CODE		

NOTICE TO PERSONS RECEIVING THIS DRAWING
THE TECHNICAL MATERIEL CORPORATION claims proprietary right in the material disclosed hereon. This drawing is issued in confidence for engineering information only and may not be reproduced or used to manufacture anything shown hereon without permission from THE TECHNICAL MATERIEL CORPORATION to the user. This drawing is loaned for mutual assistance and is subject to recall at any time.

UNLESS OTHERWISE SPECIFIED DIMENSIONS ARE IN INCHES AND INCLUDE CHEMICALLY APPLIED OR PLATED FINISHES

TOLERANCES ON

DECIMALS	FRACTIONS
.X $\pm .05$	$\pm 1/64$
.XX $\pm .01$	ANGLES
.XXX $\pm .005$	$\pm 0^\circ -30'$

MATERIAL

FINISH

QTY. REQ.	ITEM	PART NO.	DESCRIPTION	SYMBOL
LIST OF MATERIAL				
THE TECHNICAL MATERIEL CORP. MAMARONECK, NEW YORK				
PRINTED CKT. BOARD OVERLOAD TRIGGER				
SIZE	CODE	IDENT.NO.	DWG NO.	ISSUE
C	82679		PC730	
SCALE: 2:1				SHEET OF

FINAL APPROVAL

MECH. DES. F. IANNUZZI

ELECT. DES.

CHECKED

DRAWN F. IANNUZZI

DATE 3-24-75

DATE 3-24-75

DATE 3-24-75