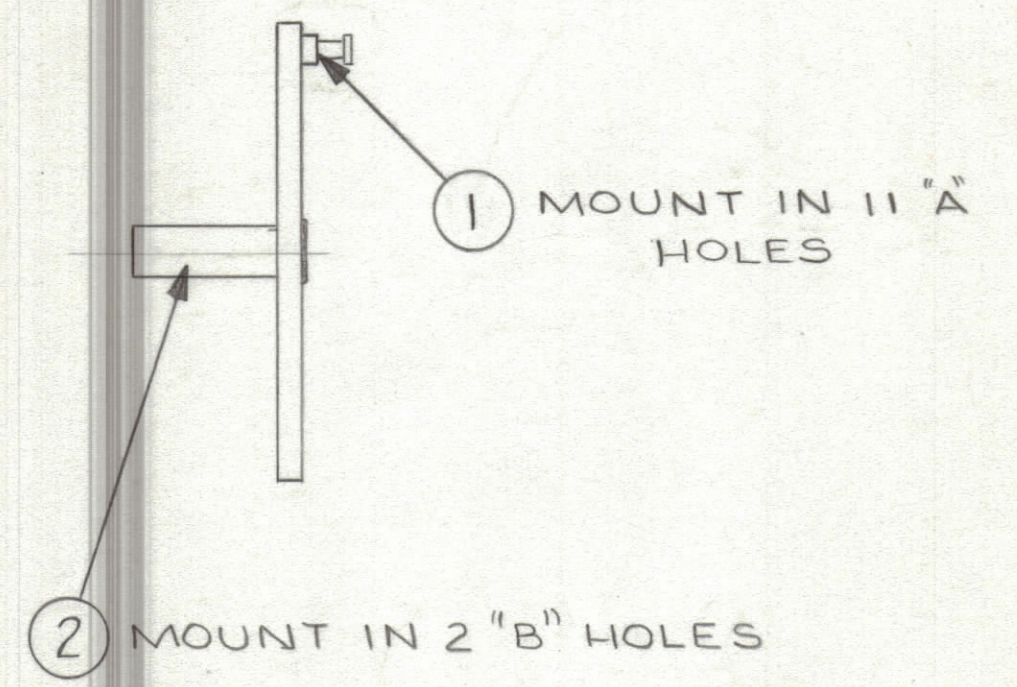
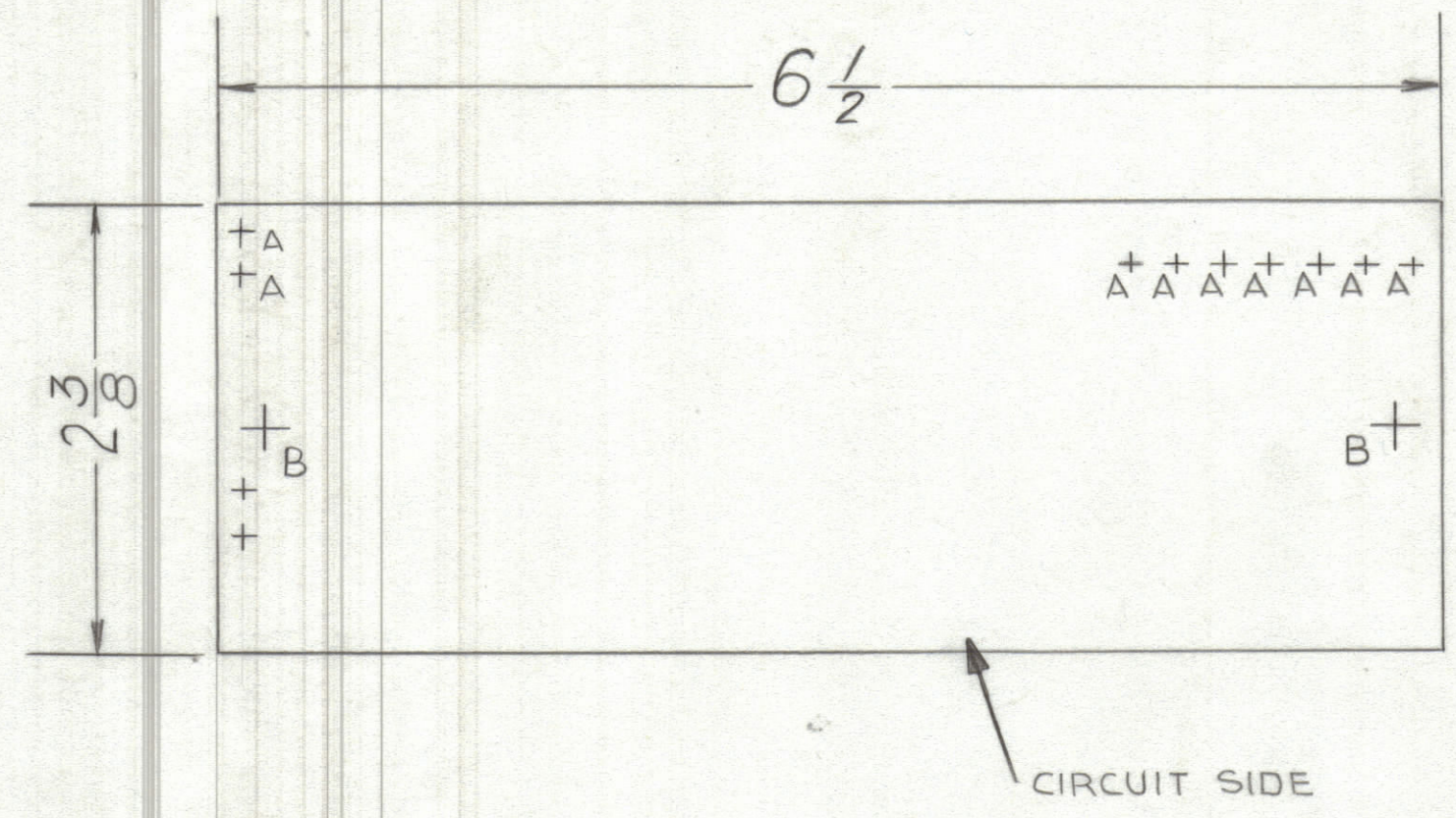


REVISIONS						
ZONE	LTR	DESCRIPTION	DATE	E.M.N.NO	DRAFT	CHKD APPD
	X	EXP. RELEASE	4-28-75		FI.	
	Ø	ORIGINAL RELEASE FOR PRODUCTION	5-20-75		JP	



HOLE	DESCRIPTION	REQ
A	.081 DIA.	11
B	.189 DIA.	2
ALL UNMARKED HOLES .042		

- FABRICATION NOTES:**
 TO BE MANUFACTURED IN ACCORDANCE WITH TMC SPEC S735 AND SPECIFICALLY.
- OVERALL MATERIAL THICKNESS .062±.0062 AS PER (PP 3.1, 3.2)
 - CONDUCTOR PATTERN TO BE COPPER FOIL AS PER (PP 4.1) PLATING TO BE TIN LEAD AS PER (PP 13.2.2, 13.2.1)
 - MIN FINISHED CONDUCTOR WIDTH SHALL NOT BE LESS THAN .020. MAX. FINISHED CONDUCTOR WIDTH SHALL BE DETERMINED BY THE ARTWORK LINE WIDTH±.010.
 - ALL HOLES TO BE PLATED THRU AS PER (PP 8.9.5) UNLESS OTHERWISE SPECIFIED.
 - ALL UNMARKED HOLES TO BE NO. 60 (.040) DRILL (SEE INDIVIDUAL ARTWORK FOR LOCATION)
 - MATERIAL: GIO GLASS EPOXY, LAMINATE 2OZ COPPER CLAD, BOTH SIDES.

QTY. REQ.	ITEM	PART NO.	DESCRIPTION	SYMBOL
2	2	TE108-24	TERMINAL, STUD	
11	1	TE127-2	TERMINAL, STANDOFF	

LIST OF MATERIAL

THE TECHNICAL MATERIEL CORP.
 MAMARONECK, NEW YORK

PRINTED CIRCUIT BOARD
 ALDC AND SENSE ADJ.

SIZE	CODE IDENT.NO.	DWG NO.	ISSUE
C	82679	PC732	Ø

SCALE 1:1 SHEET OF

QTY / UNIT	MODEL USED ON	ASS'Y NO.
1	HKIT-406	A5626
APPLICATION		
	CODE	

NOTICE TO PERSONS RECEIVING THIS DRAWING
 THE TECHNICAL MATERIEL CORPORATION claims proprietary right in the material disclosed hereon. This drawing is issued in confidence for engineering information only and may not be reproduced or used to manufacture anything shown hereon without permission from THE TECHNICAL MATERIEL CORPORATION to the user. This drawing is loaned for mutual assistance and is subject to recall at any time.

UNLESS OTHERWISE SPECIFIED DIMENSIONS ARE IN INCHES AND INCLUDE CHEMICALLY APPLIED OR PLATED FINISHES

TOLERANCES ON

DECIMALS	FRACTIONS
.X ± .05	± 1/64
.XX ± .01	ANGLES
.XXX ± .005	± 0° -30'

MATERIAL

FINISH

FINAL APPROVAL: [Signature] DATE: 4-28-75

MECH. DES.: [Signature] DATE: 4-28-75

ELECT. DES.: [Signature] DATE: 4-28-75

CHECKED: [Signature] DATE: 4-28-75

DRAWN: [Signature] DATE: 4-28-75