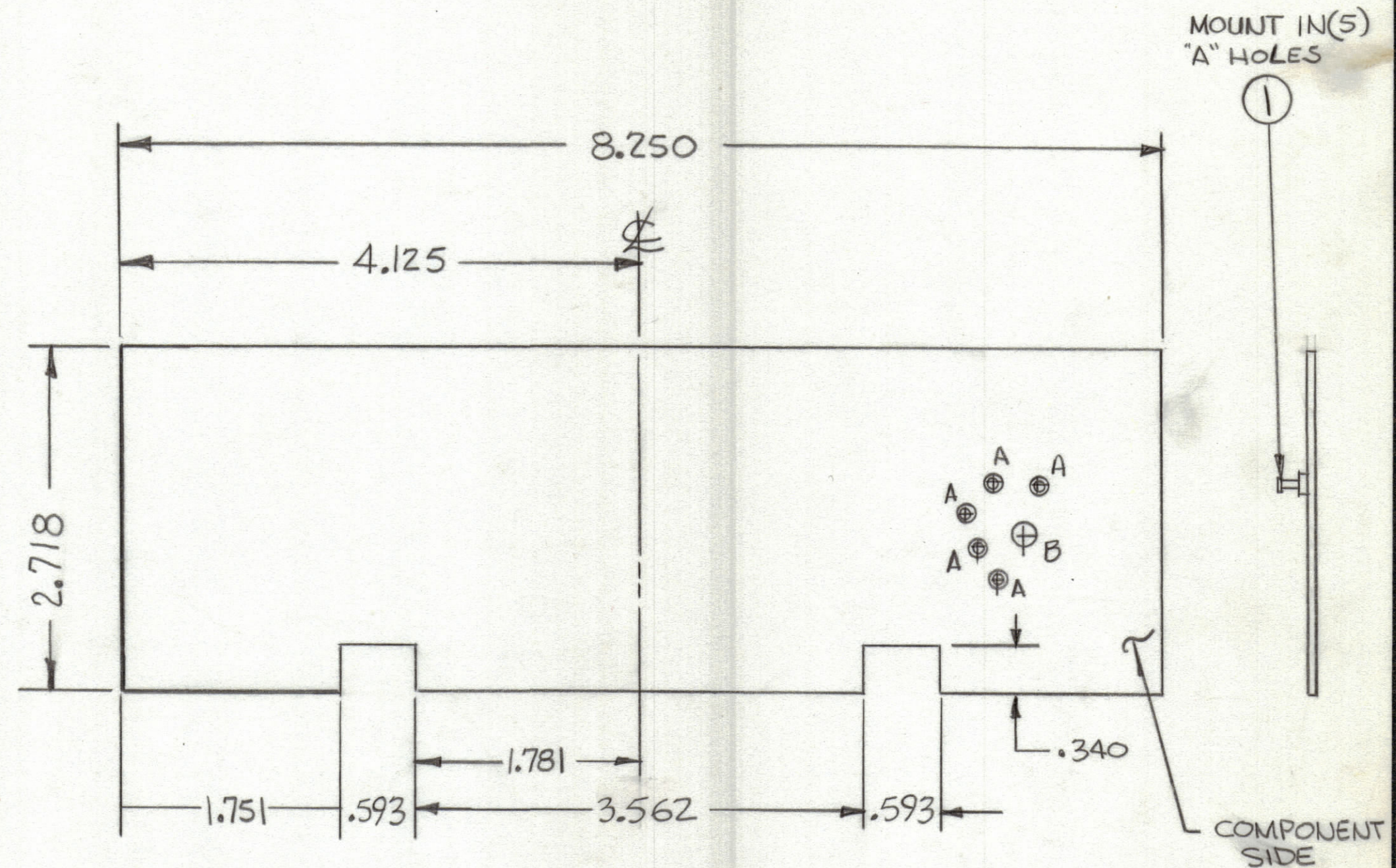


REVISIONS						
ZONE	LTR	DESCRIPTION	DATE	E.M.N.NO	DRAFT	CHKD APPD



THIS IS NOT ORIGINAL ARTWORK  
THIS IS TO BE USED FOR REF ONLY.

- FABRICATION NOTES:  
TO BE MANUFACTURED IN ACCORDANCE WITH TMC SPEC S735 & SPEC.
- OVERALL MATERIAL THICKNESS  $.062 \pm .006$  AS PER (pp 3.1, 3.2)
  - CONDUCTOR PATTERN TO BE COPPER FOIL AS PER (pp 4.1) PLATING TO BE TIN LEAD AS PER (pp 13.2.2, 13.2.1)
  - ALL HOLES TO BE PLATED-THRU AS PER (pp 8.9.5)
  - EDGE BOARD CONNECTOR FINGERS SHALL BE GOLD PLATED (pp 10)
  - MATERIAL: GIO GLASS EPOXY, LAMINATE 20Z COPPER CLAD, BOTH SIDES.

Hole	Description	Req
A	.081 DIA	5
B	3/16 DIA	1
UNMARKED HOLES .042 DIA.		

REFERENCE: Z107 CK2123

1	KIT 416	A5634
1	GPR110-A	A5634
QTY / UNIT	MODEL USED ON	ASS'Y NO.
APPLICATION		
CODE		
<small>NOTICE TO PERSONS RECEIVING THIS DRAWING</small> <small>THE TECHNICAL MATERIEL CORPORATION claims proprietary right in the material disclosed hereon. This drawing is issued in confidence for engineering information only and may not be reproduced or used to manufacture anything shown hereon without permission from THE TECHNICAL MATERIEL CORPORATION to the user. This drawing is loaned for mutual assistance and is subject to recall at any time.</small>		
MATERIAL		
FINISH		

QTY. REQ.	ITEM	PART NO.	DESCRIPTION	SYMBOL
5	1	TE127-2	TERMINAL, STUD	A
LIST OF MATERIAL				
<small>UNLESS OTHERWISE SPECIFIED DIMENSIONS ARE IN INCHES AND INCLUDE CHEMICALLY APPLIED OR PLATED FINISHES</small>				
FINAL APPROVAL		DATE		
MECH. DES.		DATE 4-1-76		
ELECT. DES.		DATE		
CHECKED		DATE 4-1-76		
DRAWN		DATE 4-1-76		
<b>THE TECHNICAL MATERIEL CORP.</b> MAMARONECK, NEW YORK  <b>PRINTED CIRCUIT Bd.</b> <b>SAMPLE DIVIDER/PHASE DET</b>				
SIZE	CODE	IDENT.NO.	DWG NO.	ISSUE
C	82679	PC739		0
SCALE				SHEET OF