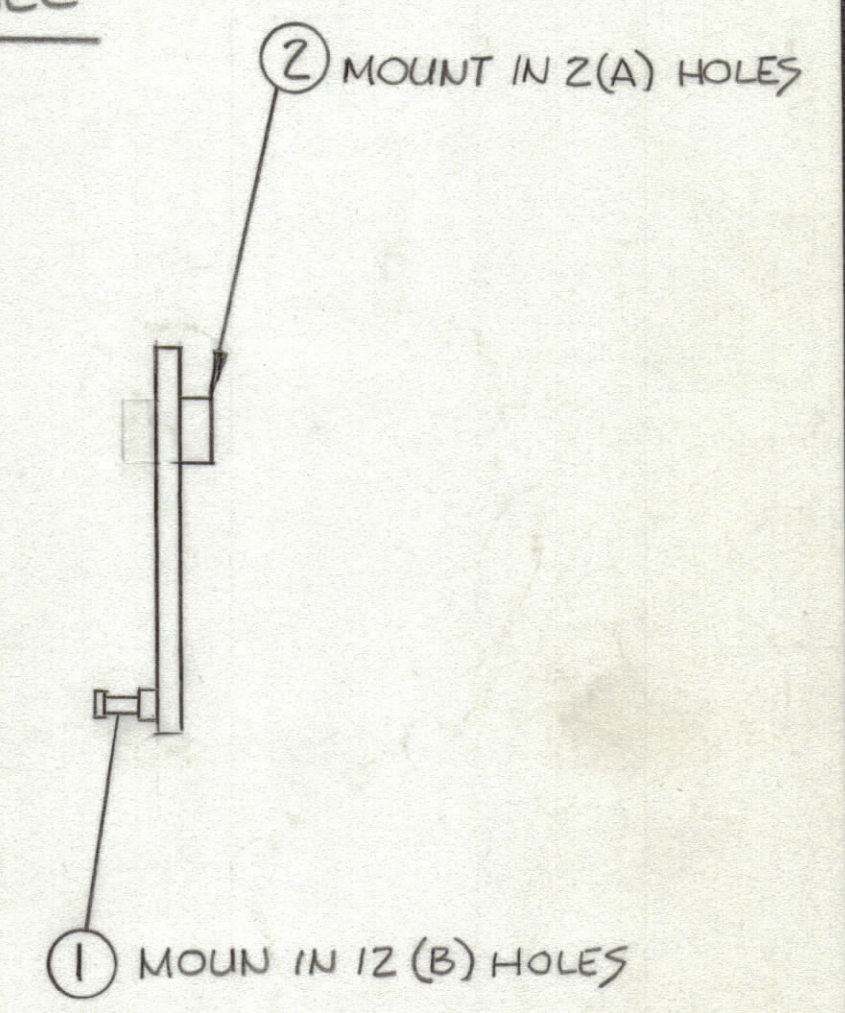
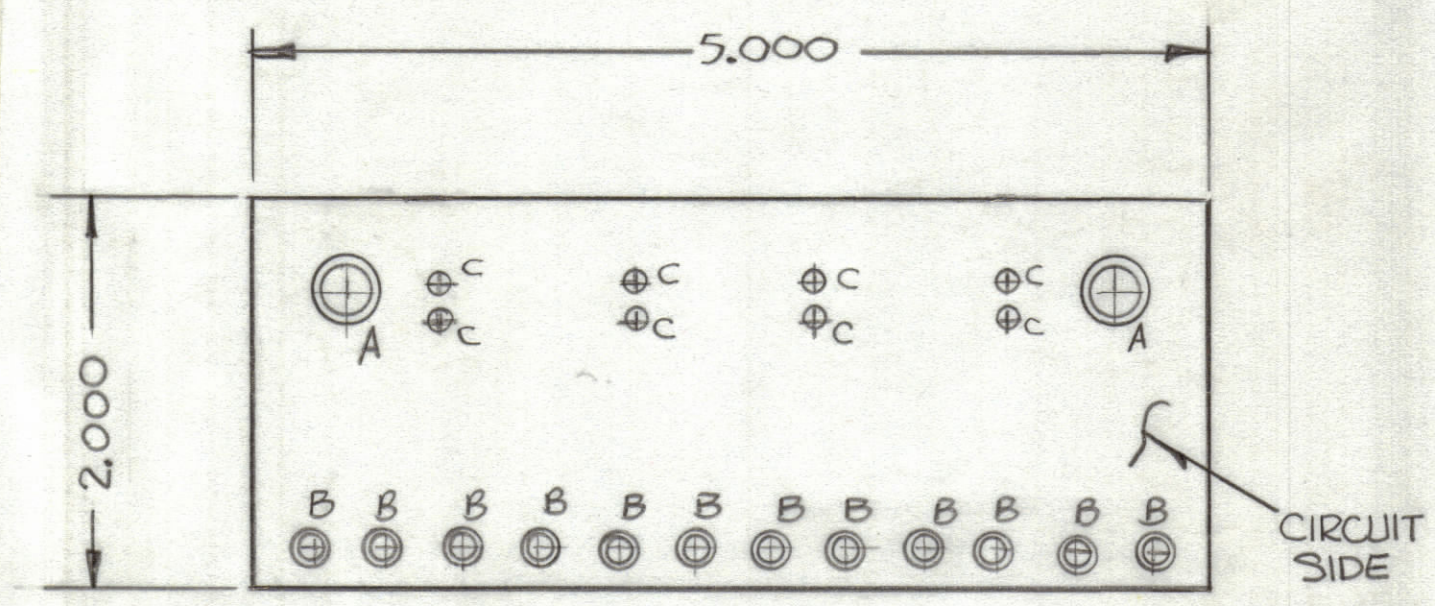


REVISIONS						
ZONE	LTR	DESCRIPTION	DATE	E.M.N.NO	DRAFT	CHKD APPD
	XI	Hole Sizes Revised	10-27-76			
	Ø	ORIGINAL RELEASE FOR PRODUCTION	1-26-77		R.Z.	*

NOTE IMPORTANT:
THIS ARTWORK IS DESIGNED TO FULL SCALE



FABRICATION NOTES:
 TO BE MANUFACTURED IN ACCORDANCE WITH TMC SPEC S735 & SPECIFICALLY
 1, OVERALL MATERIAL THICKNESS TO BE .062 ± .006 AS PER pp 3.1, 3.2
 2 CONDUCTOR PATTERN TO BE COPPER FOIL, AS PER (pp 4.1)
 PLATING TO BE TIN LEAD AS PER pp 3.2.2, 13.2.1
 3, MATERIAL TO BE GIO GLASS EPOXY LAMINATE 2 OZ COPPER CLAD
SINGLE SIDE.

HOLE	DESCRIPTION	Req.
A	.189 DIA	2
B	.081 DIA	12
C	.062 DIA	8
UNMARKED .042 DIA.		

(CK 2130)

QTY. REQ.	ITEM	PART NO.	DESCRIPTION	SYMBOL
2	2	TE164-6	TERMINAL, STANDOFF	A
12	1	TE127-2	TERMINAL, STUD	B

LIST OF MATERIAL			
UNLESS OTHERWISE SPECIFIED DIMENSIONS ARE IN INCHES AND INCLUDE CHEMICALLY APPLIED OR PLATED FINISHES			
FINAL APPROVAL		DATE	
MECH. DES.		DATE	
ELECT. DES.		DATE	
CHECKED		DATE	
DRAWN		DATE	
THE TECHNICAL MATERIEL CORP. MAMARONECK, NEW YORK			
PRINTED CIRCUIT BD. INDICATOR			
SIZE	CODE IDENT. NO.	DWG NO.	ISSUE
C	82679	PC 744	Ø
SCALE			SHEET OF

1	GPT-1 K-C	A5640
QTY / UNIT	MODEL USED ON	ASS'Y NO.
APPLICATION		
CODE		
NOTICE TO PERSONS RECEIVING THIS DRAWING		
<small>THE TECHNICAL MATERIEL CORPORATION claims proprietary right in the material disclosed hereon. This drawing is issued in confidence for engineering information only and may not be reproduced or used to manufacture anything shown hereon without permission from THE TECHNICAL MATERIEL CORPORATION to the user. This drawing is loaned for mutual assistance and is subject to recall at any time.</small>		
MATERIAL		
FINISH		