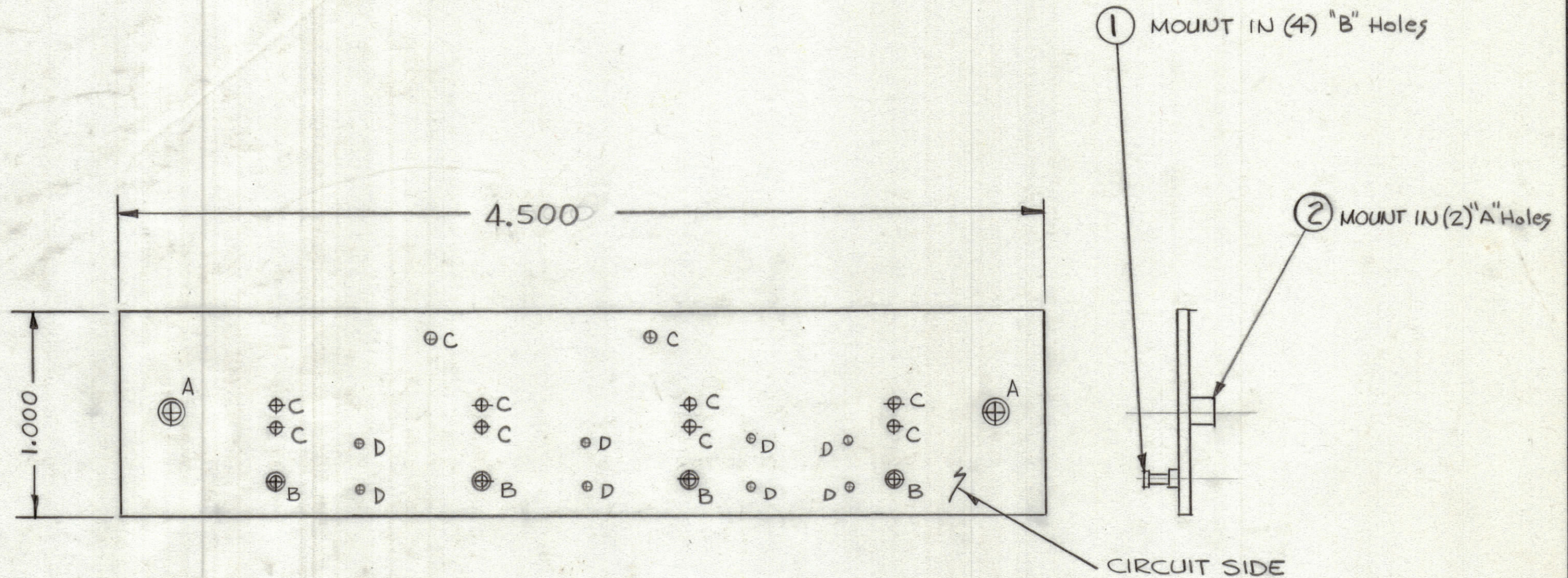


REVISIONS						
ZONE	LTR	DESCRIPTION	DATE	E.M.N.NO	DRAFT	CHKD APPD



SCALE 2:1

- TO BE MANUFACTURED IN ACCORDANCE WITH TMC SPEC S735
- OVERALL MATERIAL THICKNESS .062±.006 AS PER PP3.1, 3.2.
  - CONDUCTOR PATTERN TO BE COPPER FOIL AS PER PP4.1
  - PLATING TO BE TIN LEAD AS PER 13.2.2, 13.2.1
  - MATERIAL: G10 GLASS EPOXY LAMINATE 2 OZ COPPER CLAD, (SINGLE SIDE)

Hole	DESCRIPTION	REQ
A	.189 DIA.	2
B	.081 DIA	4
C	.062 DIA	10
D	.042 DIA	8

QTY. REQ.	ITEM	PART NO.	DESCRIPTION	SYMBOL
2	Z	TE164-1	Terminal, stadoff	A
4	1	TE127-2	Terminal, Stud	B

LIST OF MATERIAL

THE TECHNICAL MATERIEL CORP.  
MAMARONECK, NEW YORK

**PRINTED CIRCUIT Bd.**  
**INDICATORS**

SIZE	CODE IDENT.NO.	DWG NO.	ISSUE
C	82679	PC758	X

SCALE SHEET OF

1	AXS216	A5657
QTY / UNIT	MODEL USED ON	ASS'Y NO.
APPLICATION		
CODE		
<small>NOTICE TO PERSONS RECEIVING THIS DRAWING</small> <small>THE TECHNICAL MATERIEL CORPORATION claims proprietary right in the material disclosed hereon. This drawing is issued in confidence for engineering information only and may not be reproduced or used to manufacture anything shown hereon without permission from THE TECHNICAL MATERIEL CORPORATION to the user. This drawing is loaned for mutual assistance and is subject to recall at any time.</small>		

UNLESS OTHERWISE SPECIFIED DIMENSIONS ARE IN INCHES AND INCLUDE CHEMICALLY APPLIED OR PLATED FINISHES

TOLERANCES ON

DECIMALS	FRACTIONS
.X ± .05	± 1/64
.XX ± .01	ANGLES
.XXX ± .005	± 0° -30'

MATERIAL

FINISH

FINAL APPROVAL

MECH. DES. *[Signature]* DATE 2-6-77

ELECT. DES. DATE

CHECKED DATE

DRAWN *[Signature]* DATE 2-6-77