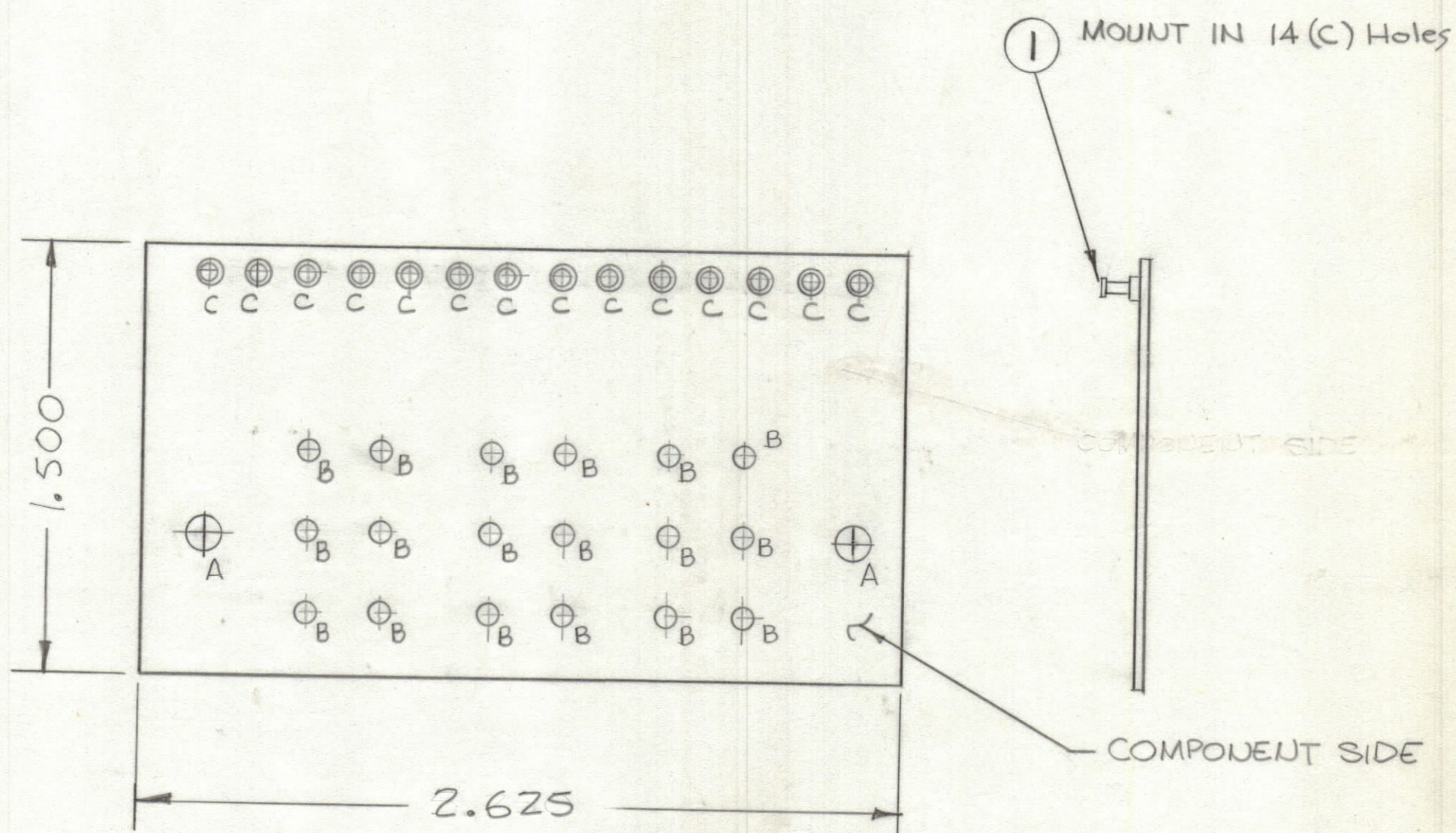


REVISIONS						
ZONE	LTR	DESCRIPTION	DATE	E.M.N.NO	DRAFT	CHKD APPD
	Ø	ORIGINAL RELEASE FOR PRODUCTION	6-5-78	AK	RL	WB *



NOTE:
 FABRICATION NOTES SEE S735
 1. OVERALL MATERIAL THICKNESS .062±.006 AS PER pp3.1, 3.2
 2. CONDUCTOR PATTERN TO BE COPPER FOIL AS PER pp4.1.
 3. PLATING TO BE TIN LEAD AS PER pp13.2.2, 13.2.1.
 4. ALL HOLES TO BE PLATED-THRU AS PER (pp 8.9.5)
 5. MATERIAL: GIO GLASS EPOXY LAMINATE 2 OZ COPPER CLAD.

Hole	DESCRIPTION	REQ
A	11/64 DIA	2
B	.070 DIA	18
C	.081 DIA	14

SCALE 2:1

1	MMX-2B	A5719
QTY / UNIT	MODEL USED ON	ASS'Y NO.
APPLICATION		
	CODE	
<small>NOTICE TO PERSONS RECEIVING THIS DRAWING</small> <small>THE TECHNICAL MATERIEL CORPORATION claims proprietary right in the material disclosed hereon. This drawing is issued in confidence for engineering information only and may not be reproduced or used to manufacture anything shown hereon without permission from THE TECHNICAL MATERIEL CORPORATION to the user. This drawing is loaned for mutual assistance and is subject to recall at any time.</small>		

UNLESS OTHERWISE SPECIFIED DIMENSIONS ARE IN INCHES AND INCLUDE CHEMICALLY APPLIED OR PLATED FINISHES	
TOLERANCES ON	
DECIMALS	FRACTIONS
.X ± .05	± 1/64
.XX ± .01	ANGLES
.XXX ± .005	± 0° -30'
MATERIAL	
FINISH	

14	1	TE127-2	TERMINAL, STUD	C
QTY. REQ.	ITEM	PART NO.	DESCRIPTION	SYMBOL
LIST OF MATERIAL				
FINAL APPROVAL: [Signature] DATE: 8/2/78 MECH. DES.: [Signature] DATE: 12-5-77 ELECT. DES.: DATE: CHECKED: [Signature] DATE: 12/5/77 DRAWN: [Signature] DATE: 12-5-77				
THE TECHNICAL MATERIEL CORP. MAMARONECK, NEW YORK PRINTED CIRCUIT Bd. (3) PUSH SWITCH CONTROL				
SIZE	CODE IDENT.NO.	DWG NO.	ISSUE	
C	82679	PC782	Ø	
SCALE	SHEET			OF