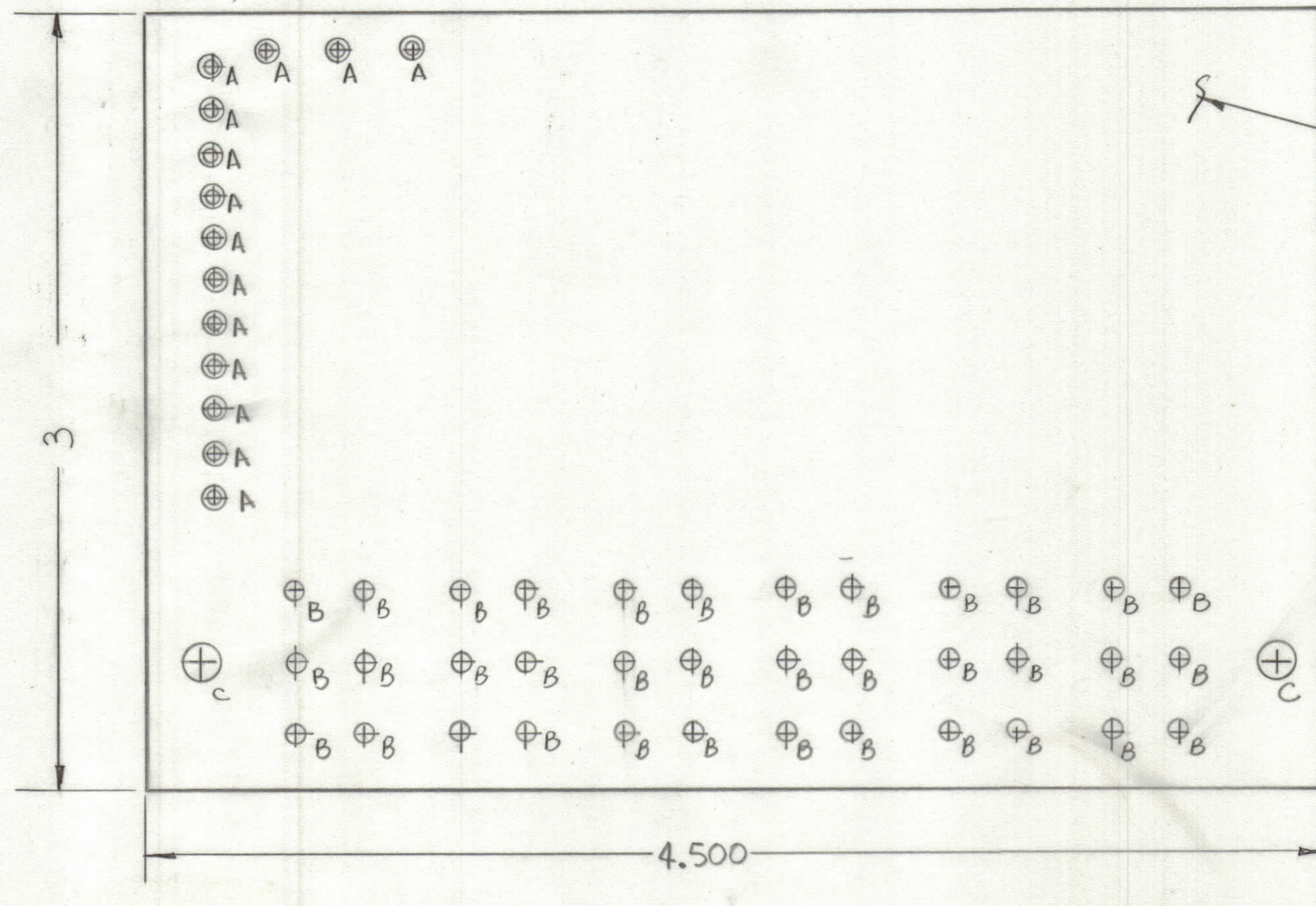
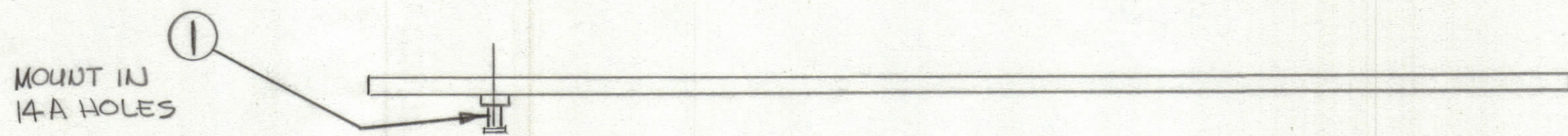


REVISIONS						
ZONE	LTR	DESCRIPTION	DATE	E.M.N.NO	DRAFT	CHKD APPD
	8	ORIGINAL RELEASE	4-22-81			



Hole	Description	Req.
A	.081 DIA	14
B	.070 DIA	36
C	11/64 DIA	2
UNMARKED HOLES .042 DIA.		

FABRICATION NOTES:
 TO BE MANUFACTURED IN ACCORDANCE WITH TMC SPEC S735 AND SPECIFICALLY
 1. OVERALL MATERIAL THICKNESS .062±.006 AS PER (pp3.1,3.2)
 2. CONDUCTOR PATTERN TO BE COPPER FOIL AS PER (pp4.1), PLATING TO BE TIN LEAD AS PER (pp13.2.2,13.2.1)
 3. MATERIAL TO BE G10 GLASS EPOXY, LAMINATE 2 OZ COPPER CLAD, (2 SIDES.)
 4.
 5. ALL HOLES TO BE PLATED THRU AS PER (pp 8.9.5) UNLESS OTHERWISE SPECIFIED

SCALE 2:1

1	PCST-1	A5724
QTY / UNIT	MODEL USED ON	ASS'Y NO.
APPLICATION		
CODE		
NOTICE TO PERSONS RECEIVING THIS DRAWING THE TECHNICAL MATERIEL CORPORATION claims proprietary right in the material disclosed hereon. This drawing is issued in confidence for engineering information only and may not be reproduced or used to manufacture anything shown hereon without permission from THE TECHNICAL MATERIEL CORPORATION to the user. This drawing is loaned for mutual assistance and is subject to recall at any time.		
MATERIAL		
FINISH		

14	1	TE127-2	TERMINAL STUD	A
QTY. REQ.	ITEM	PART NO.	DESCRIPTION	SYMBOL
LIST OF MATERIAL				
UNLESS OTHERWISE SPECIFIED DIMENSIONS ARE IN INCHES AND INCLUDE CHEMICALLY APPLIED OR PLATED FINISHES TOLERANCES ON DECIMALS .X ± .05 .XX ± .01 .XXX ± .005 FRACTIONS ± 1/64 ANGLES ± 0° -30'			THE TECHNICAL MATERIEL CORP. MAMARONECK, NEW YORK PRINTED CIRCUIT BD.	
FINAL APPROVAL		DATE		
MECH. DES.		DATE		
ELECT. DES.		DATE		
CHECKED		DATE		
DRAWN		DATE		
DRAWN		4-15-81		
SIZE	CODE IDENT. NO.	DWG NO.	ISSUE	
C	82679	PC787	Ø	
SCALE			SHEET	OF

PC787