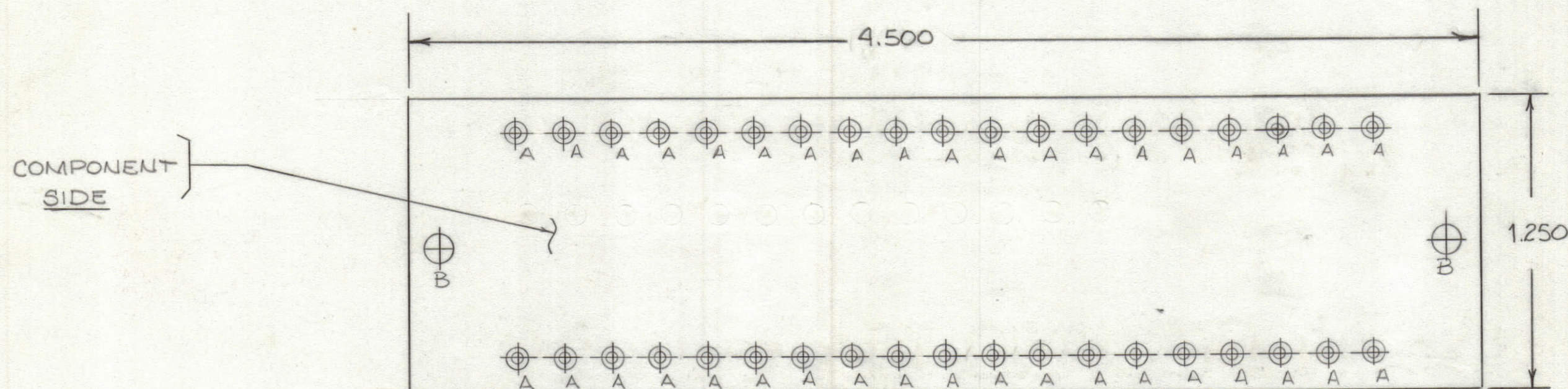


NOTES:

FABRICATION NOTES SEE S735

1. OVERALL MATERIAL THICKNESS .062±006 AS PER pp3.1, 3.2.
2. CONDUCTOR PATTERN TO BE COPPER FOIL AS PER pp4.1 PLATING TO BE TIN LEAD AS PER pp 13.2.2, 13.2.1
3. MATERIAL: G10 GLASS EPOXY LAMINATE 202 COPPER CLAD

REVISIONS					
ZONE	LTR	DESCRIPTION	DATE	E.M.N.NO	DRAFT
	Ø	ORIGINAL RELEASE FOR PRODUCTION	1-17-78		RJ



1
MOUNT 38 (A)
SIZE HOLES

HOLE	DESCRIPTION	REQ
A	.081 DIA	38
B	9/64 DIA.	2
UNMARKED HOLES .042 DIA.		

1	ATU1K-8	
QTY / UNIT	MODEL USED ON	ASS'Y NO.
APPLICATION		
	CODE	

NOTICE TO PERSONS RECEIVING THIS DRAWING
 THE TECHNICAL MATERIEL CORPORATION claims proprietary right in the material disclosed hereon. This drawing is issued in confidence for engineering information only and may not be reproduced or used to manufacture anything shown hereon without permission from THE TECHNICAL MATERIEL CORPORATION to the user. This drawing is loaned for mutual assistance and is subject to recall at any time.

UNLESS OTHERWISE SPECIFIED DIMENSIONS ARE IN INCHES AND INCLUDE CHEMICALLY APPLIED OR PLATED FINISHES

TOLERANCES ON	
DECIMALS	FRACTIONS
.X ± .05	± 1/64
.XX ± .01	ANGLES
.XXX ± .005	± 0° -30'

38	1	TE127-2	TERMINAL, STUD	A
QTY. REQ.	ITEM	PART NO.	DESCRIPTION	SYMBOL

FINAL APPROVAL		DATE	THE TECHNICAL MATERIEL CORP. MAMARONECK, NEW YORK PRINTED CIRCUIT BOARD (FILTER)	
MECH. DES.		DATE		
ELECT. DES.		DATE		
CHECKED		DATE		
DRAWN		DATE		

MATERIAL		SIZE	CODE IDENT.NO.	DWG NO.	ISSUE
FINISH		C	82679	PC 795	Ø
		SCALE		SHEET	OF

PC795