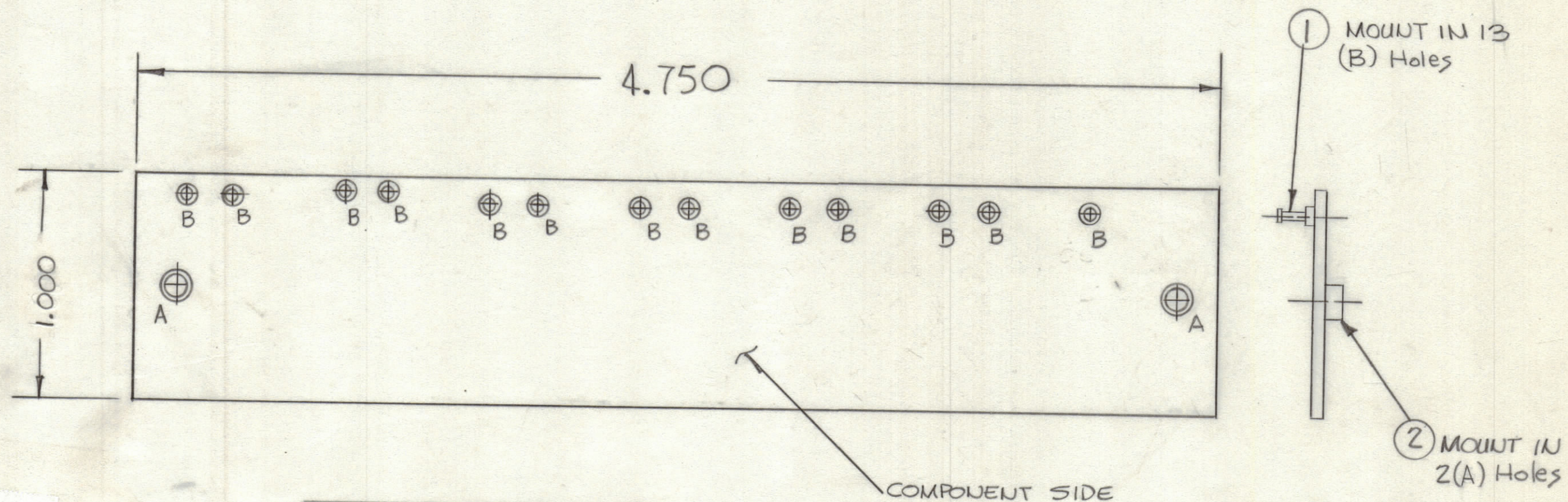


REVISIONS						
ZONE	LTR	DESCRIPTION	DATE	E.M.N.NO	DRAFT	CHKD APPD
	Ø	ORIGINAL RELEASE	42484	-	266	



FABRICATION NOTES:
 TO BE MANUFACTURED IN ACCORDANCE WITH TMC SPEC S735 AND SPECIFICALLY
 1. OVERALL MATERIAL THICKNESS .062 \pm .006 AS PER (pp3.1,3.2)
 2. CONDUCTOR PATTERN TO BE COPPER FOIL AS PER (pp4.1), PLATING TO BE TIN LEAD AS PER (pp13.2.2,13.2.1)
 3. MATERIAL TO BE G10 GLASS EPOXY, LAMINATE 2 OZ COPPER CLAD,
 4. SINGLE SIDE CONDUCTOR (F.N.O.) TO BE PLATED AS PER (pp 8.9.5)
 5. ALL HOLES TO BE PLATED THRU AS PER (pp 8.9.5) UNLESS OTHERWISE SPECIFIED

Hole	Description	Req.
A	.189 DIA	2
B	.081 DIA	13
Unmarked Holes .042 DIA		

QTY. REQ.	ITEM	PART NO.	DESCRIPTION	SYMBOL
2	2	TE16A-1	TERMINAL STANDOFF	A
13	1	TE127-2	TERMINAL STUD	B

LIST OF MATERIAL

THE TECHNICAL MATERIEL CORP.
 MAMARONECK, NEW YORK

PRINTED CIRCUIT BOARD
 SWITCHING COMB FILTERS

QTY / UNIT	MODEL USED ON	ASS'Y NO.
1	A4501-1	A5745
1	A4500-1	A5745

APPLICATION

CODE

NOTICE TO PERSONS RECEIVING THIS DRAWING
 THE TECHNICAL MATERIEL CORPORATION claims proprietary right in the material disclosed hereon. This drawing is issued in confidence for engineering information only and may not be reproduced or used to manufacture anything shown hereon without permission from THE TECHNICAL MATERIEL CORPORATION to the user. This drawing is loaned for mutual assistance and is subject to recall at any time.

UNLESS OTHERWISE SPECIFIED DIMENSIONS ARE IN INCHES AND INCLUDE CHEMICALLY APPLIED OR PLATED FINISHES

TOLERANCES ON

DECIMALS	FRACTIONS
.X \pm .05	\pm 1/64
.XX \pm .01	ANGLES
.XXX \pm .005	\pm 0° -30'

MATERIAL

FINISH

FINAL APPROVAL

MECH. DES.

ELECT. DES.

CHECKED

DRAWN *W*

DATE

DATE

DATE

DATE

DATE

12-4-80

SIZE	CODE IDENT.NO.	DWG NO.	ISSUE
C	82679	PC798	Ø

SCALE

SHEET OF