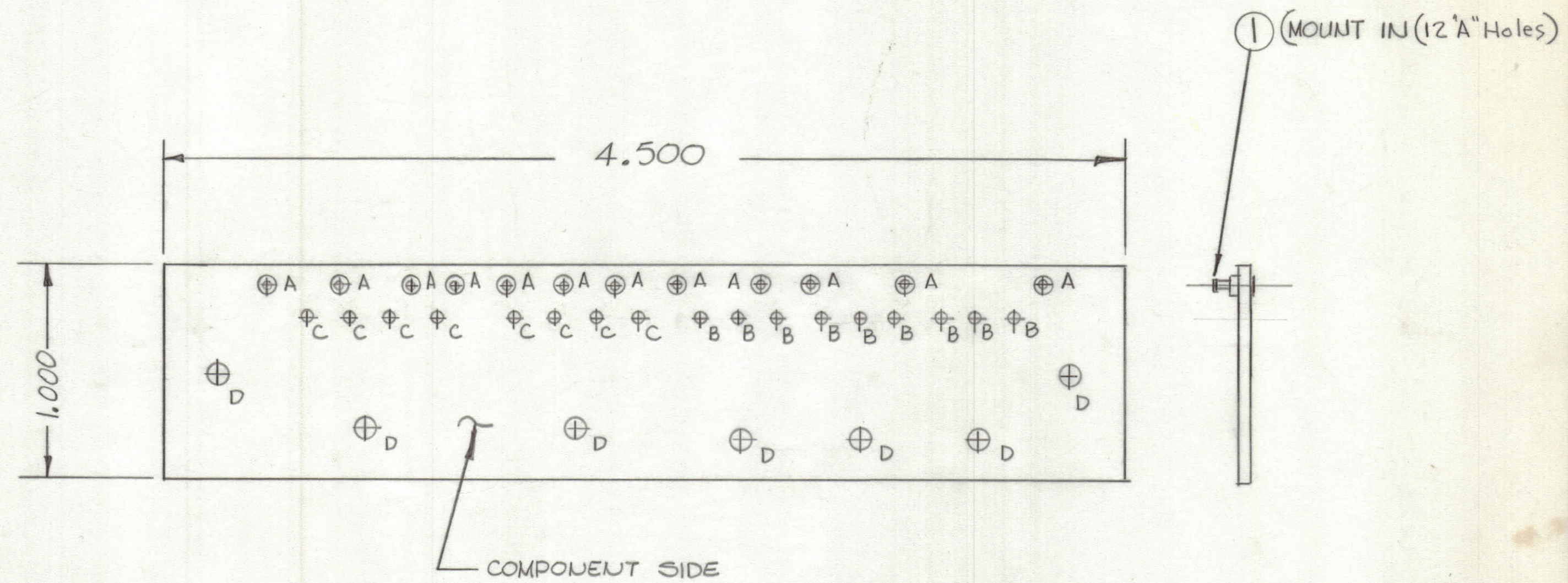


REVISIONS							
ZONE	LTR	DESCRIPTION	DATE	E.M.N.NO	DRAFT	CHKD	APPD
	XI	Circuit Revised	7-11-78				
	Ø	ORIGINAL RELEASE FOR PRODUCTION	7-13-78		RU	WBS	*



SCALE 2:1

- NOTE:
 FABRICATION NOTES SEE 5735
 1. OVERALL MATERIAL THICKNESS .062±.006 AS PER PP3.1, 3.2.
 2. CONDUCTOR PATTERN TO BE COPPER FOIL AS PER PP4.1. PLATING TO BE TIN-LEAD 13.2.Z
 3. MATERIAL: GIO GLASS EPOXY LAMINATE 2OZ COPPER CLAD.
 4. ALL HOLES TO BE PLATED -THRU AS PER 8.9.5.

Hole	Description	Req.
A	.081 DIA	12
B	.042 DIA	9
C	.062 DIA	8
D	11/64 DIA	7

1		DPC-10 (BMA547)		A5761	
QTY / UNIT	MODEL USED ON	APPLICATION		ASS'Y NO.	
CODE		NOTICE TO PERSONS RECEIVING THIS DRAWING			
<small>THE TECHNICAL MATERIEL CORPORATION claims proprietary right in the material disclosed hereon. This drawing is issued in confidence for engineering information only and may not be reproduced or used to manufacture anything shown hereon without permission from THE TECHNICAL MATERIEL CORPORATION to the user. This drawing is loaned for mutual assistance and is subject to recall at any time.</small>					
MATERIAL		FINISH		UNLESS OTHERWISE SPECIFIED DIMENSIONS ARE IN INCHES AND INCLUDE CHEMICALLY APPLIED OR PLATED FINISHES	
TOLERANCES ON		FINAL APPROVAL		DATE	
DECIMALS .X ± .05 .XX ± .01 .XXX ± .005		* <i>COB</i> MECH. DES.		7/13/78	
FRACTIONS ± 1/64 ANGLES ± 0° -30'		ELECT. DES.		DATE	
		CHECKED		DATE	
		DRAWN		DATE	
		<i>[Signature]</i>		6-28-78	
12		1		TE127-2	
QTY. REQ.		ITEM		PART NO.	
1		Terminal Stud		A	
		DESCRIPTION		SYMBOL	
		Terminal Stud		A	
LIST OF MATERIAL					
THE TECHNICAL MATERIEL CORP. MAMARONECK, NEW YORK					
PRINTED CIRCUIT Bd _g POWER SUPPLY					
SIZE		CODE IDENT.NO.		DWG NO.	
C		82679		PC807	
SCALE		SHEET		OF	