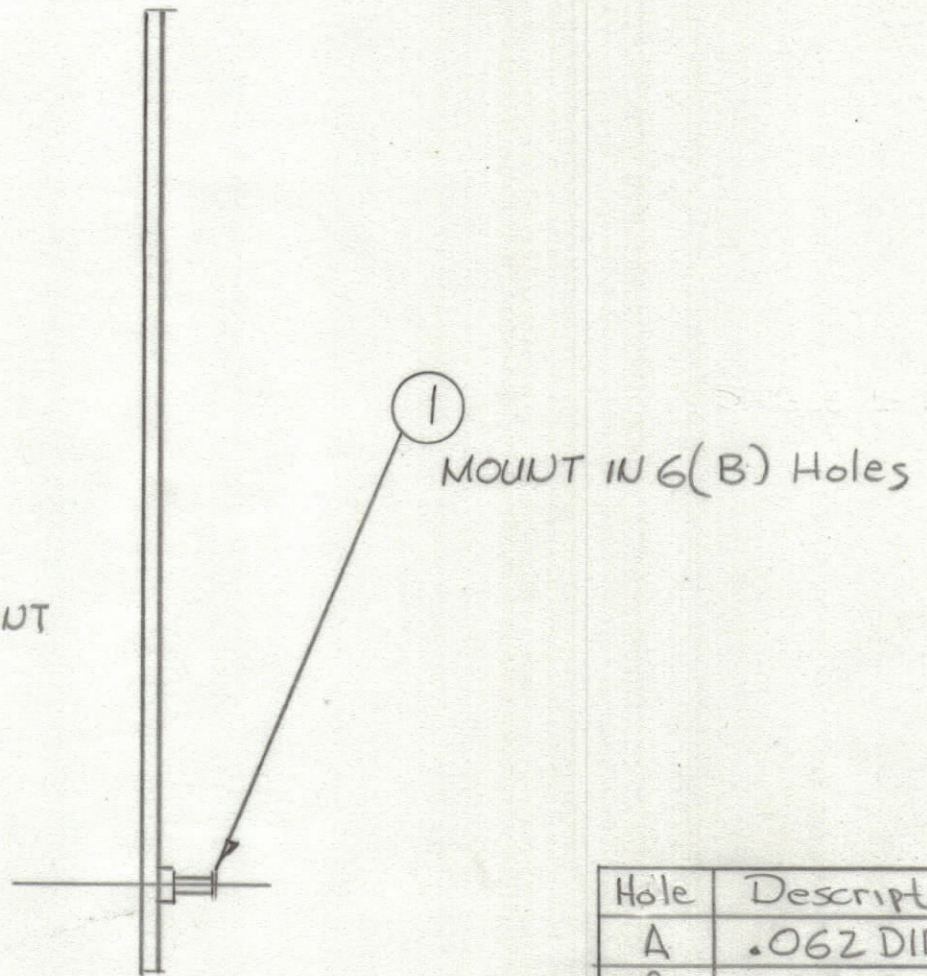
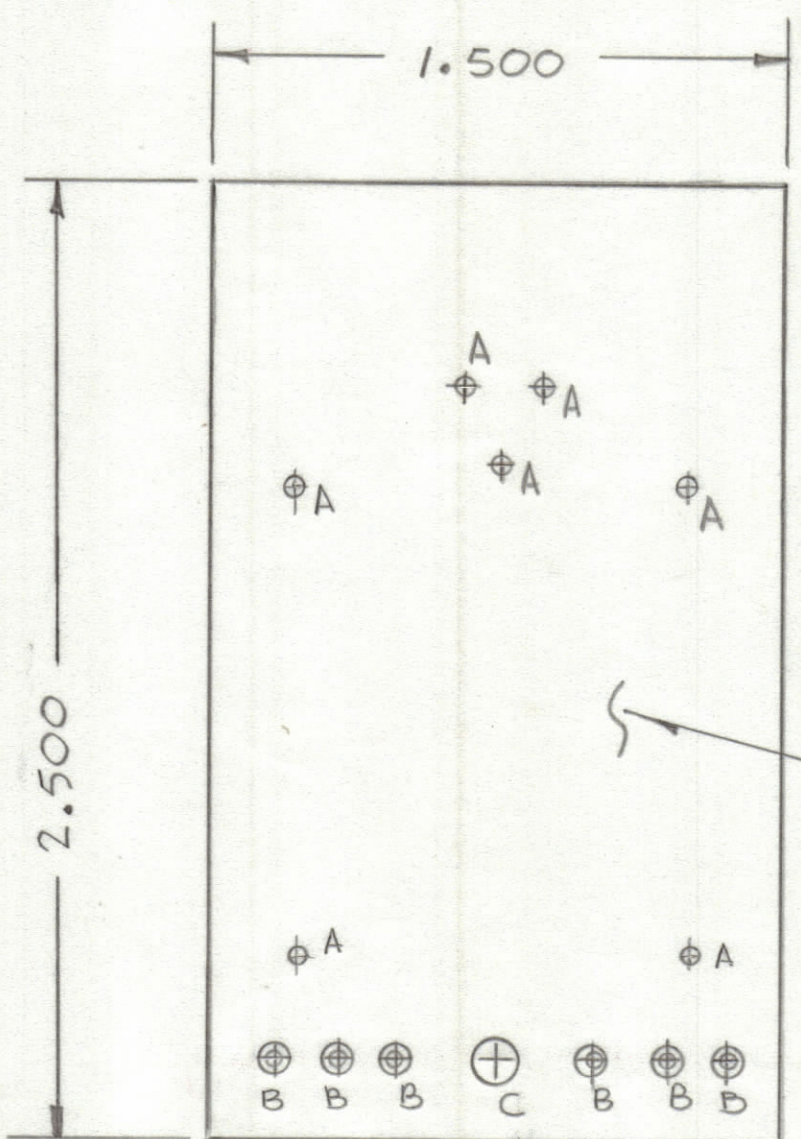


REVISIONS				
ZONE	LTR	DESCRIPTION	DATE	E.M.N.N.
	Ø	ORIGINAL RELEASE FOR PRODUCTION	9/20/79	MA



Hole	Description	Req.
A	.062 DIA.	7
B	.081 DIA.	6
C	11/64 DIA	1
UNMARKED HOLES .042		

NOTES:
 TO BE MANUFACTURED IN ACCORDANCE WITH TMC SPEC S735 AND SPECIFICALLY.
 1. OVERALL MATERIAL THICKNESS .062 ± .006 (pp 3.1, 3.2)
 2. CONDUCTOR PATTERN TO BE COPPER FOIL AS PER pp 4.1 PLATING TO BE TIN LEAD AS PER (pp 13.2.2, 13.2.1)
 3. ALL HOLES TO BE PLATED THRU AS PER (pp 8.9.5)
 4. MATERIAL: G10 GLASS EPOXY, LAMINATE 20% COPPER CLAD (SINGLE SIDE)

1	MFT-10K15 (AXS240)	A5766
QTY / UNIT	MODEL USED ON	ASS'Y NO.
APPLICATION		
CODE		
NOTICE TO PERSONS RECEIVING THIS DRAWING THE TECHNICAL MATERIEL CORPORATION claims proprietary right in the material disclosed hereon. This drawing is issued in confidence for engineering information only and may not be reproduced or used to manufacture anything shown hereon without permission from THE TECHNICAL MATERIEL CORPORATION to the user. This drawing is loaned for mutual assistance and is subject to recall at any time.		

UNLESS OTHERWISE SPECIFIED DIMENSIONS ARE IN INCHES AND INCLUDE CHEMICALLY APPLIED OR PLATED FINISHES

TOLERANCES ON

DECIMALS	FRACTIONS
.X ± .05	± 1/64
.XX ± .01	ANGLES
.XXX ± .005	± 0° -30'

6	1	TE127-2	TERMINAL STUD	B
QTY. REQ.	ITEM	PART NO.	DESCRIPTION	SYMBOL
LIST OF MATERIAL				
FINAL APPROVAL		DATE	THE TECHNICAL MATERIEL CORP.	
MECH. DES.		DATE	MAMARONECK, NEW YORK	
ELECT. DES.		DATE	PRINTED CIRCUIT BD.	
CHECKED		DATE	(SENSE CIRCUIT)	
DRAWN		DATE	SIZE	CODE IDENT. NO.
			C	82679
			DWG NO.	PC809
			ISSUE	Ø
			SCALE	SHEET OF