

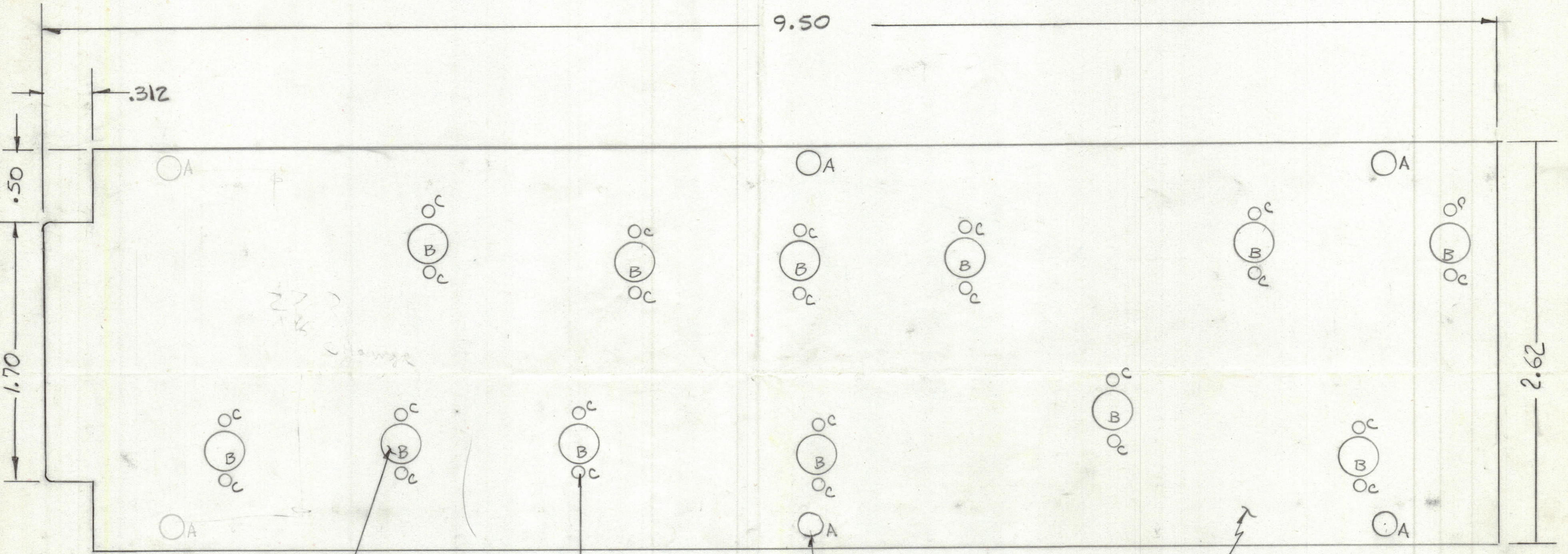
4

3

2

1

REVISIONS							
ZONE	LTR	DESCRIPTION	DATE	E.M.N.NO	DRAFT	CHKD	APPD
		Release					



* "B" HOLES .270 DIA
12 REQ

1/8" HOLES .070 DIA
24 REQ

"A" HOLES 1/8 x 1/4 SLOTS
4 REQ

COMPONENT SIDE

* NOTE: B DIAM HOLES ARE NOT TO BE PLATED THROUGH
ALL UNSPECIFIED HOLES TO BE .042 DIA.

QTY. REQ.	ITEM	PART NO.	DESCRIPTION	SYMBOL								
LIST OF MATERIAL												
THE TECHNICAL MATERIEL CORP. MAMARONECK, NEW YORK												
DRILLING FINAL MIXER												
FINAL APPROVAL		DATE		<table border="1"> <tr> <td>SIZE</td> <td>CODE IDENT.NO.</td> <td>DWG NO.</td> <td>ISSUE</td> </tr> <tr> <td>C</td> <td>82679</td> <td>PC847</td> <td>∅</td> </tr> </table>	SIZE	CODE IDENT.NO.	DWG NO.	ISSUE	C	82679	PC847	∅
SIZE	CODE IDENT.NO.	DWG NO.	ISSUE									
C	82679	PC847	∅									
MECH. DES.		DATE										
ELECT. DES.		DATE										
CHECKED		DATE										
DRAWN		DATE										
SCALE			SHEET	OF								

UNLESS OTHERWISE SPECIFIED DIMENSIONS ARE IN INCHES AND INCLUDE CHEMICALLY APPLIED OR PLATED FINISHES	
TOLERANCES ON	
DECIMALS	FRACTIONS
.X ± .05	± 1/64
.XX ± .01	ANGLES
.XXX ± .005	± 0° -30'
MATERIAL	
FINISH	

QTY / UNIT	MODEL USED ON	ASS'Y NO.
APPLICATION		
CODE		
NOTICE TO PERSONS RECEIVING THIS DRAWING THE TECHNICAL MATERIEL CORPORATION claims proprietary right in the material disclosed hereon. This drawing is issued in confidence for engineering information only and may not be reproduced or used to manufacture anything shown hereon without permission from THE TECHNICAL MATERIEL CORPORATION to the user. This drawing is loaned for mutual assistance and is subject to recall at any time.		

4

3

2

1