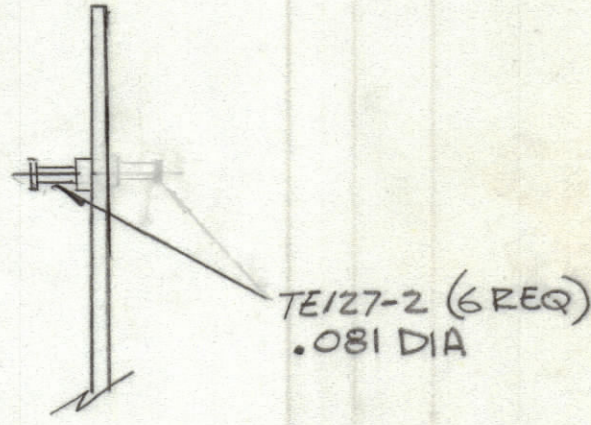
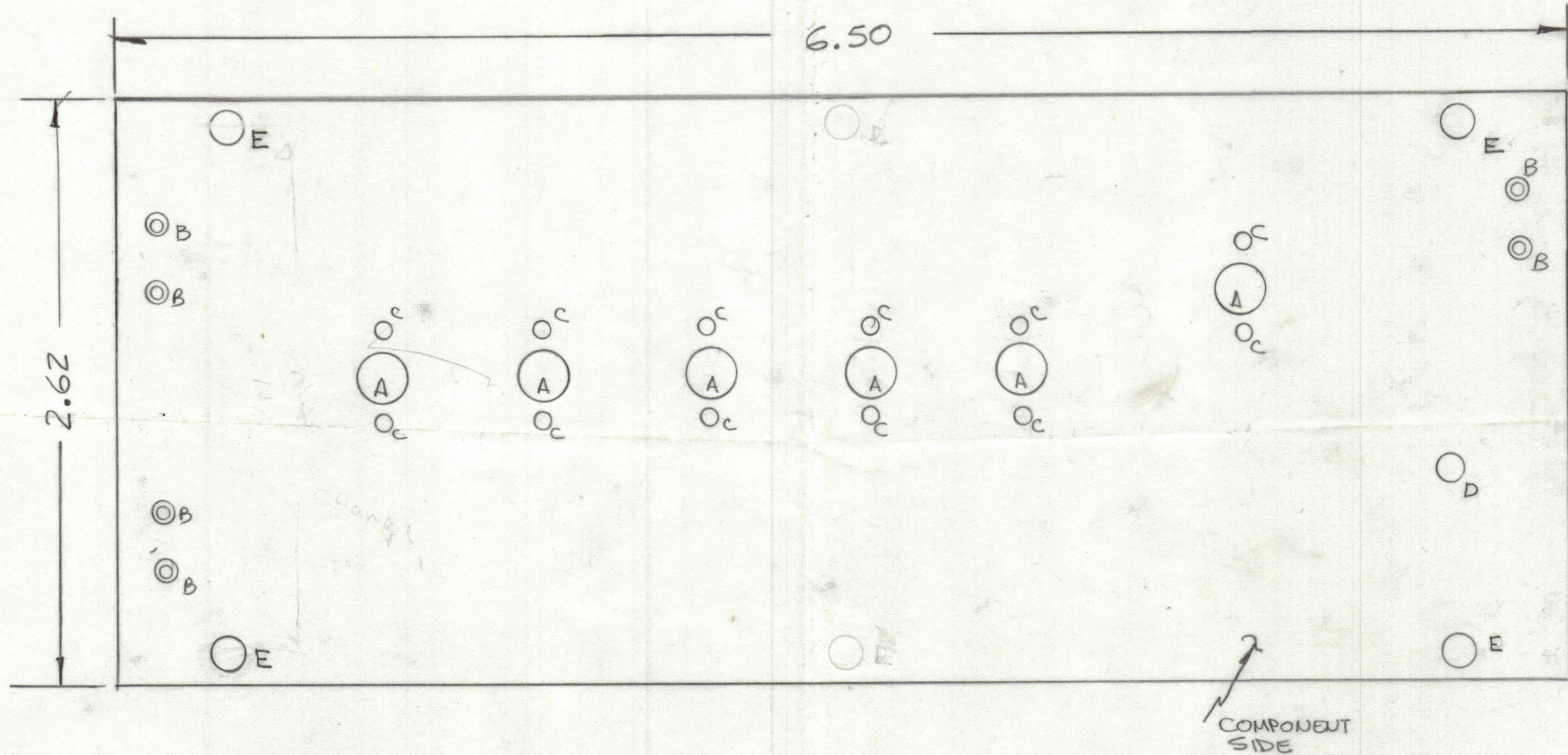


REVISIONS						
ZONE	LTR	DESCRIPTION	DATE	E.M.N.NO	DRAFT	CHKD APPD
X2	Ø	COMPLETELY REDESIGNED TWO (2) E HOLES DEL	9/1/84 4-1984			



* NOTE: A DIAM HOLES ARE NOT TO BE PLATED THROUGH

Hole	Description	Req
A	.280 DIA	6
B	.081 DIA	6
C	.070 DIA	12
D	.156 DIA	1
	1/4 UNMARKED .050 DIA	~
E	1/8 x 1/4 SLOTS	4

REF CK2266

UNLESS OTHERWISE SPECIFIED DIMENSIONS ARE IN INCHES AND INCLUDE CHEMICALLY APPLIED OR PLATED FINISHES

TOLERANCES ON

DECIMALS	FRACTIONS
.X ± .05	± 1/64
.XX ± .01	ANGLES
.XXX ± .005	± 0° -30'

QTY. REQ.	ITEM	PART NO.	DESCRIPTION	SYMBOL
LIST OF MATERIAL				
THE TECHNICAL MATERIEL CORP. MAMARONECK, NEW YORK				
DRILLING 20.6-26.4 MHz				
FINAL APPROVAL			DATE	
MECH. DES.			DATE	
ELECT. DES.			DATE	
CHECKED			DATE	
DRAWN			DATE	
SIZE	CODE IDENT. NO.	DWG. NO.	ISSUE	
C	82679	PC 849	Ø	
SCALE			SHEET	OF

QTY / UNIT	MODEL USED ON	ASS'Y NO.
APPLICATION		
CODE		
MATERIAL		
FINISH		

NOTICE TO PERSONS RECEIVING THIS DRAWING

THE TECHNICAL MATERIEL CORPORATION claims proprietary right in the material disclosed hereon. This drawing is issued in confidence for engineering information only and may not be reproduced or used to manufacture anything shown hereon without permission from THE TECHNICAL MATERIEL CORPORATION to the user. This drawing is loaned for mutual assistance and is subject to recall at any time.