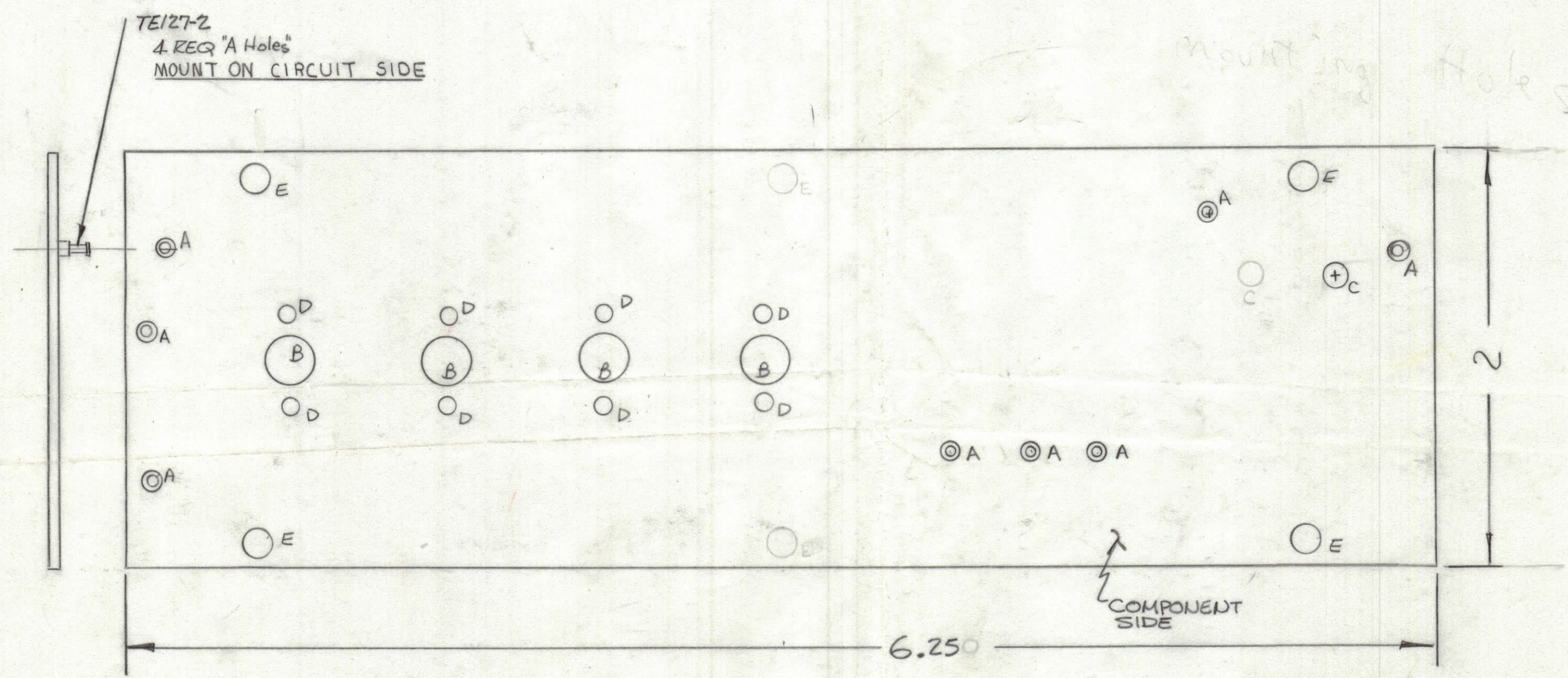


REVISIONS						
ZONE	LTR	DESCRIPTION	DATE	E.M.N.NO	DRAFT	CHKD APPD
	X2	COMPLETELY REDESIGNED	8/85/84		✓	
	X3	CHANGED	4/10/85		✓	
	X4	1" Hole Relocated, 1" Hole Added	11-28-85		✓	
	X5	TWO "E" HOLES DEL	4-19-88		✓	



HOLE	DESCRIPTION	REQ
A	.081 DIA	8
B	.280 DIA	4
C	11/64 DIA	1
D	.070 DIA	8
E	1/8 x 1/4 SIOTS	4
	UNMARKED .042 DIA	

\*NOTE: B DIAM HOLES ARE NOT TO BE PLATED THROUGH!

QTY. REQ.	ITEM	PART NO.	DESCRIPTION	SYMBOL
8	1	TE127-2	TERMINAL	A

LIST OF MATERIAL

UNLESS OTHERWISE SPECIFIED DIMENSIONS ARE IN INCHES AND INCLUDE CHEMICALLY APPLIED OR PLATED FINISHES	FINAL APPROVAL	DATE
	MECH. DES.	DATE
	ELECT. DES.	DATE
	CHECKED	DATE
	DRAWN	DATE

THE TECHNICAL MATERIEL CORP.  
MAMARONECK, NEW YORK

DRILLING, TRANSLATOR CIRCUIT

QTY / UNIT	MODEL USED ON	ASS'Y NO.
		A5822
APPLICATION		
CODE		

MATERIAL		SIZE	CODE IDENT.NO.	DWG NO.	ISSUE
FINISH		C	82679	PC 854	X5

SCALE	SHEET	OF

NOTICE TO PERSONS RECEIVING THIS DRAWING  
THE TECHNICAL MATERIEL CORPORATION claims proprietary right in the material disclosed hereon. This drawing is issued in confidence for engineering information only and may not be reproduced or used to manufacture anything shown hereon without permission from THE TECHNICAL MATERIEL CORPORATION to the user. This drawing is loaned for mutual assistance and is subject to recall at any time.