

DL-141

SPECIFICATIONS

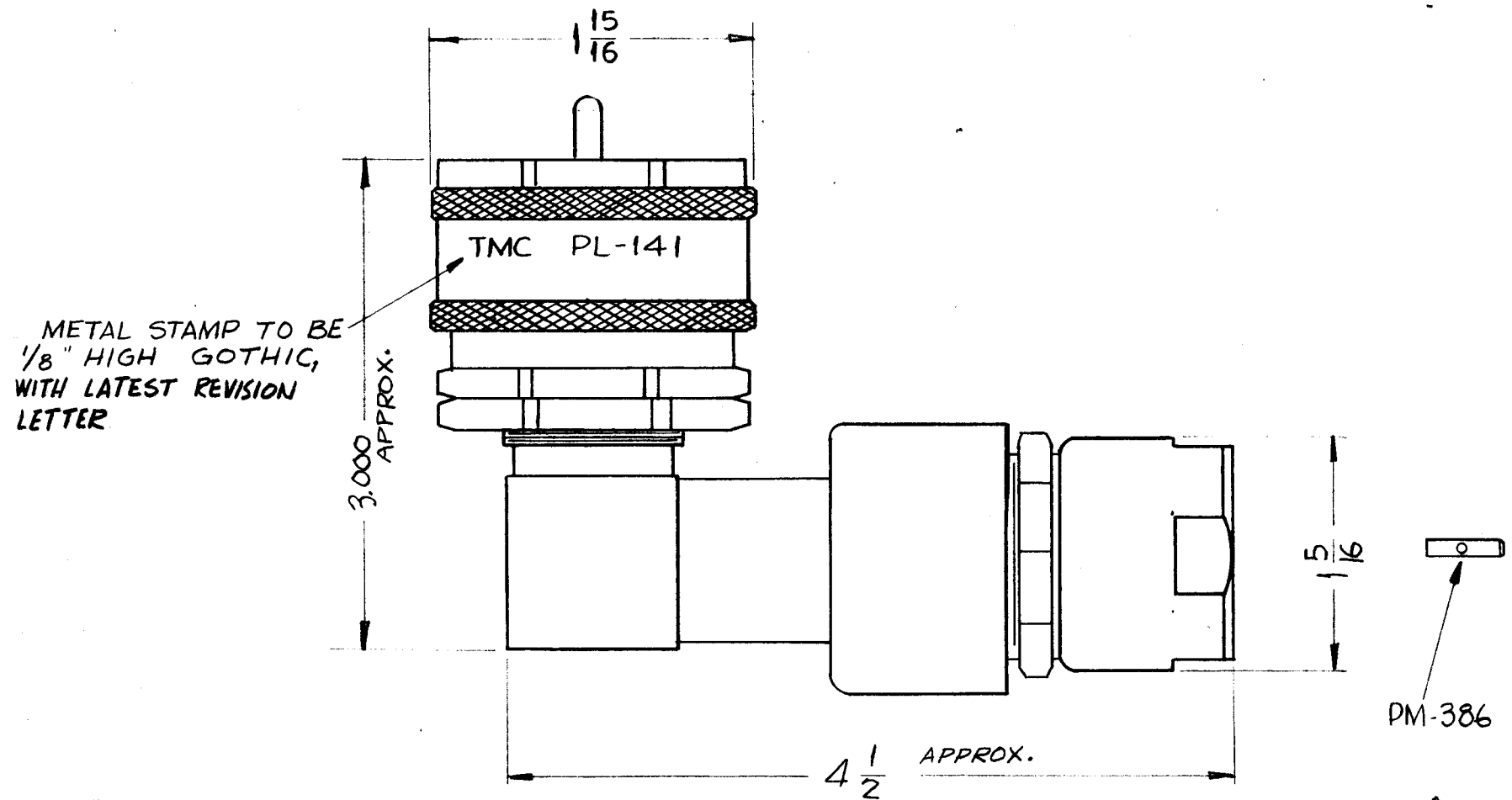
SERIES ~ QDL
 NO OF CONTACTS ~ ONE(1)
 TYPE OF CONTACT ~ MALE
 DIELECTRIC ~ TEFLON
ELECTRICAL DATA
 MAX. PEAK VOLTAGE ~ 10,000
 FREQ. LIMIT ~ 1,000 MCS.
 NOM. IMPEDANCE ~ 50Ω

CABLE ACCOMODATIONS

TYPE ~ RG-17/U, RG-18/U, RG-218/U, RG-219/U,
 W/PM-386, RG-35/U, RG-164/U.

MATERIAL

EXTERNAL PARTS ~ BRASS
 CONTACT ~ BRASS
 GASKETS ~ SILICONE RUBBER
 CONTACT FINGER ~ BERYLLIUM COPPER
FINISH
 EXT. PARTS ~ SILVER PLATE + RHODIUM FLASH.
 CONTACTS, FINGERS ~ SILVER PLATE + GOLD
 FLASH.



NOTICE TO PERSONS RECEIVING THIS DRAWING

THE TECHNICAL MATERIEL CORPORATION claims proprietary right in the material disclosed hereon. This drawing is issued in confidence for engineering information only and may not be reproduced or used to manufacture anything shown hereon without permission from THE TECHNICAL MATERIEL CORPORATION to the user. This drawing is loaned for mutual assistance and is subject to recall at any time.

Property of:

THE TECHNICAL MATERIEL CORPORATION
 MAMARONECK, NEW YORK

NOTE ~ USE TMC SPEC S-345/QDL FOR CABLE ASS'Y.

SYM	DESCRIPTION	DATE	CH. NO.	DRAFTS	CHECKER	ENG. APP.
C	ON PICTORIAL, 1/2" DIM DELETED	7-20-64	11902			
B	REVISED AND REDRAWN	5/18/61				

UNLESS OTHERWISE SPECIFIED:
 DIMENSIONS ARE IN INCHES
 TOLERANCES ON FRACTIONS ± 1/64 DECIMALS ± .005 ANGLES ± 1/2°

SCALE: S-401-70 (3099)

MAXIMUM ALLOWABLE TOLERANCES HAVE BEEN DETERMINED AND ANY DEVIATIONS WILL BE CAUSE FOR REJECTION. REMOVE ALL BURRS AND SHARP EDGES

REQ. PER UNIT	MODEL	SECTION	ASS'Y. NO.	DATE
				5-18-61

USED ON

REQ. ITEM	PART NO.	DESCRIPTION	SYMBOL
		THE TECHNICAL MATERIEL CORP. MAMARONECK, NEW YORK	
		STOCK SIZE	
		ADAPTOR, RIGHT ANGLE	
		QDL SERIES TO CABLE	
		MATERIAL	
		TYPE & TEMPER	
		HEAT TREAT. SPEC.	
		DRAWN	
		CHECKER	
		FINAL APPROVAL	
		FINISH & SPEC. NO.	
		ELEC. DES. APP.	
		MECH. DES. APP.	

PL-141

C