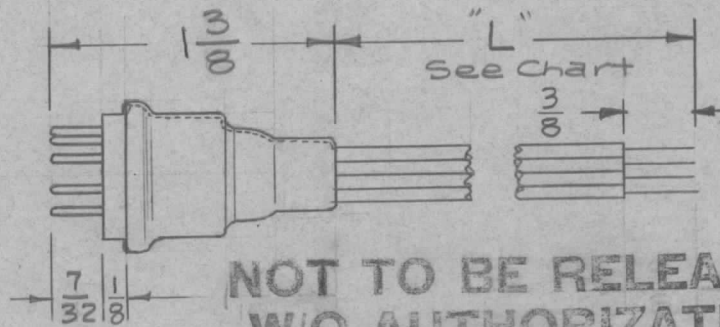
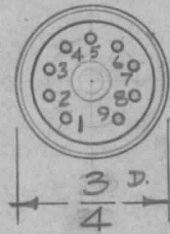


TMC PART NO.	MFG. CAT. NO.	NUMBER OF LEADS	CONNECT WIRE COLOR SHOWN TO PIN NO.-									WIRE LENGTH "L"
			Pin 1	Pin 2	Pin 3	Pin 4	Pin 5	Pin 6	Pin 7	Pin 8	Pin 9	
PL-184-1	909	NONE	NC	NC	NC	NC	NC	NC	NC	NC	NC	0"
PL-184-2	909C M.C.D.	8	Black	Yellow	Green	White	Red	Orange	Brown	Grey	N.C.	5"
PL-184-3												
PL-184-4												
PL-184-5												



NOTE - NC = No Connection

All Leads will be be Std. 22 Ga. Stranded Insulated Wire (Mil Type MWCZZ(7)U -- Free End will be stripped & tinned 3/8"

NOT TO BE RELEASED W/O AUTHORIZATION

REDRAWN

- SEE PL-219 -

For the following reasons:

1. TMC part drawing no. PL-184 was in direct conflict w/ Penta Lab part # PL-184.
2. Therefore, to avoid conflict w/ Penta Lab part no. & TMC part nos; the TMC dwg # PL-184 was changed to PL-219.

REF - ALDEN PRODUCTS

REQ.	ITEM	PART NO.	DESCRIPTION			SYMBOL					
B	1	REDRAWN NOTE ADDED	THE TECHNICAL MATERIEL CORP. MAMARONECK, NEW YORK								
A	1	wire colors chgd (-2)	PLUG, 9 Pin Miniature								
ISSUE	ITEM	CHANGED FROM	DATE	CH. NO.	DRAFTS	CHECKER	ENG. APP.				
TOLERANCES		SCALE: 5401-163									
DEC. DIM. ±		MAXIMUM ALLOWABLE TOLERANCES HAVE BEEN DETERMINED AND ANY DEVIATIONS WILL BE CAUSE FOR REJECTION. REMOVE ALL BURRS AND SHARP EDGES									
FRAC. DIM. ±											
ANGULAR DIM. ±											
		TYPE & TEMPER		HEAT TREAT. SPEC.		DRAWN		CHECKED		FINAL APPROVAL	
		FINISH & SPEC. NO.		ELEC. DES. APP		MECH. DES. APP		PL-184		B	