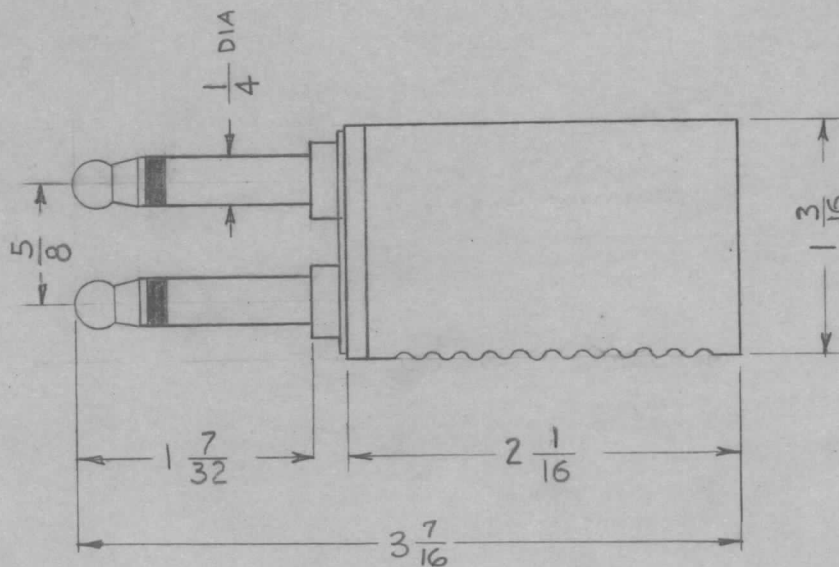


REQ. PER UNIT	USED ON			PL-194	A
	MODEL	ASSY. NO.	DATE		
			2-1-61		

INSULATION TEST (BETWEEN PARTS) 500V RMS  
 FRAME — DIE CAST  
 SHELL — BLACK PHENOLIC  
 POLARITY — SHELL NOTCHED FOR POLARITY  
 TYPE — THREE CONDUCTOR (2 TIP CONDUCTORS,  
 PLUS SLEEVE CONNECTION COMMON  
 TO BOTH SLEEVES)



NOTE - For cable Ass'y complete w/ this  
 plug at each end, See CA-130

AUDIO DEVEL. CO. # PJ-1

REQ.	ITEM	PART NO.	DESCRIPTION				SYMBOL
			THE TECHNICAL MATERIEL CORP.				
			MAMARONECK, NEW YORK				
			PLUG TELEPHONE				
A	2	DIM. 3-7/16 ADDED	1-9-63	7995	<i>SP</i>	<i>Pho</i>	
	1	DIM 2 1/16 WAS 3-7/16					
ISSUE	ITEM	CHANGED FROM	DATE	CH. NO.	DRAFTS	CHECKER	ENG. APP.
TOLERANCES			SCALE:				
DEC. DIM. ±			MAXIMUM ALLOWABLE TOLERANCES HAVE BEEN DETERMINED AND ANY DEVIATIONS WILL BE CAUSE FOR REJECTION. REMOVE ALL BURRS AND SHARP EDGES				
FRAC. DIM. ±							
ANGULAR DIM. ±							
TYPE & TEMPER		HEAT TREAT. SPEC.	DRAWN		CHECKED		FINAL APPROVAL
FINISH & SPEC. NO.		ELEC. DES. APP	MECH. DES. APP		PL-194 A		