

THE CONTENTS OF THIS DRAWING ARE THE EXCLUSIVE PROPERTY OF THE TECHNICAL MATERIEL CORP. ITS UNAUTHORIZED USE OR REPRODUCTION IN WHOLE OR IN PART IS STRICTLY FORBIDDEN.

REQ. PER UNIT

USED ON

MODEL

ASS'Y. NO.

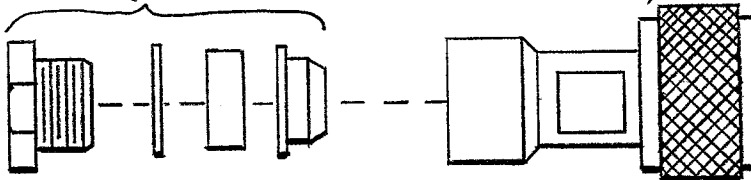
DATE

3-23-62

PL-222

SLEEVE TYPE
INSERTS

BODY TYPE
UG-59 /



SPECIFICATIONS

SERIES ~ "HN"

NO OF CONTACTS ~ ONE

TYPE OF CONTACT ~ MALE

DIELECTRIC ~ TEFLON

ELECTRICAL DATA

MAX. PEAK OPER. VOLT ~ 5,000V

NOM. IMPEDANCE ~ 50Ω

CABLE ACCOMODATIONS

TYPE ~ RG-165/U

MAX. O.D ~ .410"

MATERIAL

EXTERNAL PARTS ~ BRASS

CONTACT ~ BRASS

INSULATION ~ TEFLON

FINISH

EXT. PARTS ~ SILVER PLATE

CONTACT ~ SILVER PLATE

REQ.	ITEM	PART NO.	DESCRIPTION				SYMBOL	
			THE TECHNICAL MATERIEL CORP. MAMARONECK, NEW YORK					
			STOCK SIZE					
			CONNECTOR, PLUG, RF FOR - RG-165/U					
			MATERIAL					
SYM	DESCRIPTION	DATE	CH. NO.	DRAFTS	CHECKER	ENG. APP.		
UNLESS OTHERWISE SPECIFIED: DIMENSIONS ARE IN INCHES TOLERANCES ON		SCALE: S401-70-(2478)						
FRAC. ± 1/64 DEC. ± .005 ANGLES ± 1/2°		MAXIMUM ALLOWABLE TOLERANCES HAVE BEEN DETERMINED AND ANY DEVIATIONS WILL BE CAUSE FOR REJECTION. REMOVE ALL BURRS AND SHARP EDGES						
A		TYPE & TEMPER		HEAT TREAT. SPEC.		DRAWN	CHECKED	FINAL APPROVAL
		FINISH & SPEC. NO.		ELEC. DES. APP.		MECH. DES. APP.		PL-222