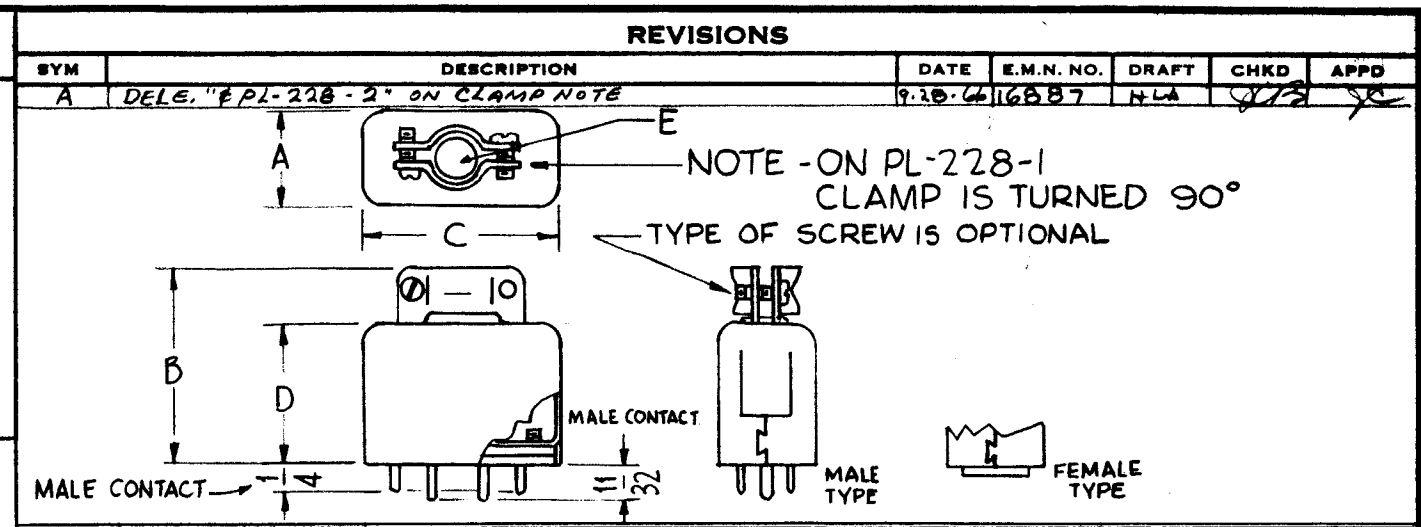


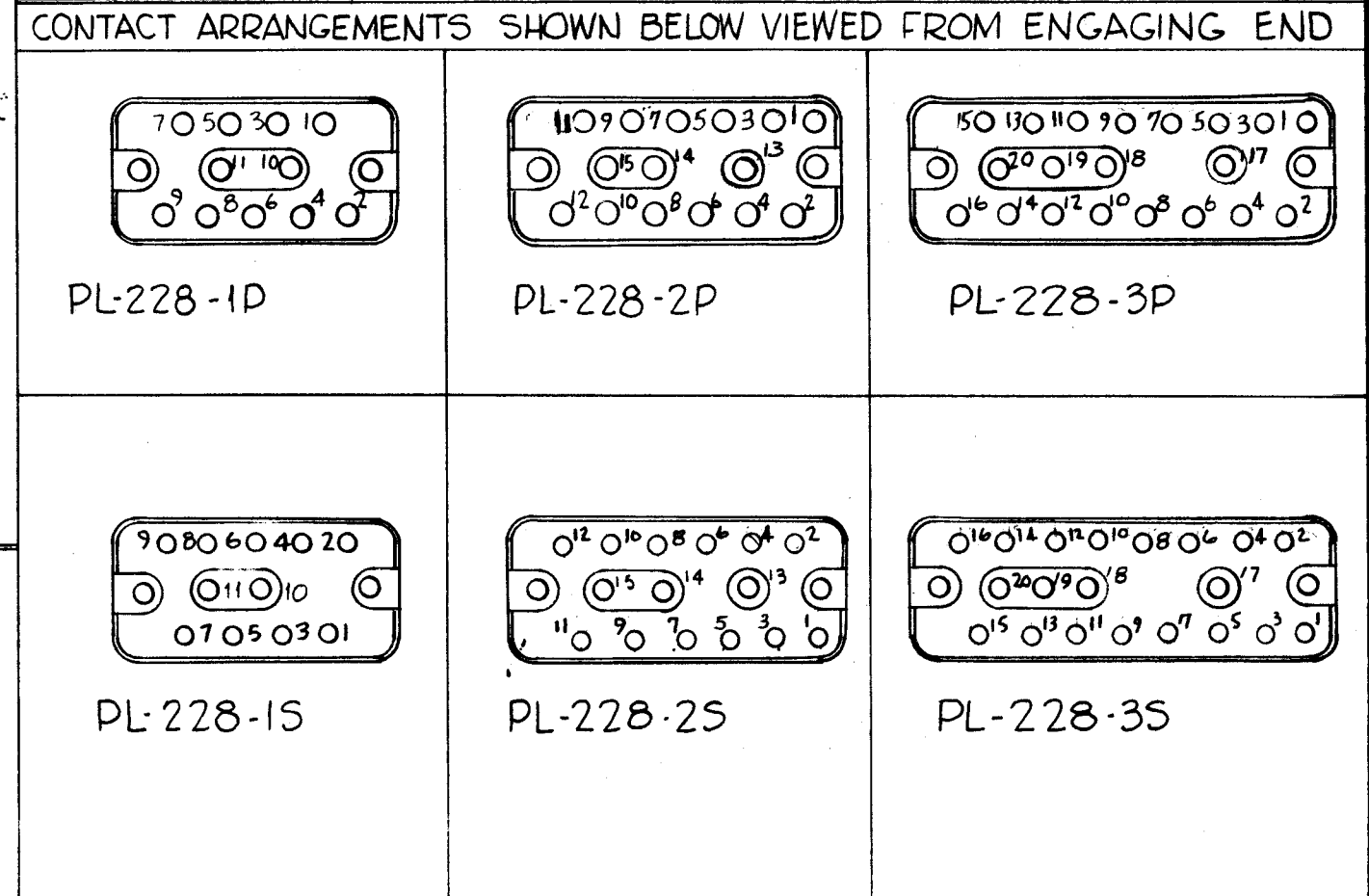
TMC PART NUMBER	MFR PART NUMBER	TYPE OF CONTACT	TOTAL NO OF CONTACT	CONTACT SIZE		VOLTAGE RATING AT SEA LEVEL	CONTACT CURRENT RATING	
				SIZE 16	SIZE 20		SIZE 16	SIZE 20
PL-228-1P	126-809	MALE	11	2	9	900VRMS	23A	7.5 A
PL-228-1S	126-808	FEM.	11	2	9	900VRMS	23A	7.5 A
PL-228-2P	126-152	MALE	15	3	12	900VRMS	23A	7.5 A
PL-228-2S	126-153	FEM.	15	3	12	900VRMS	23A	7.5 A
PL-228-3P	126-811	MALE	20	4	16	900VRMS	23A	7.5 A
PL-228-3S	126-810	FEM.	20	4	16	900VRMS	23A	7.5 A

A  
PL-228



DIMENSION CHART (TOL. = 1/32 MAX.)

TMC PART NUMBER	A DEPTH	B LENGTH	C WIDTH	D LENGTH HOUSING	E MAX. CABLE DIA. ENTRY
PL-228-1P	27/32	1 3/4	1 9/32	1 1/4	5/8
PL-228-1S	27/32	1 3/4	1 9/32	1 1/4	5/8
PL-228-2P	27/32	2 1/16	1 19/32	1 19/32	5/8
PL-228-2S	27/32	2 1/16	1 19/32	1 19/32	5/8
PL-228-3P	27/32	2 1/16	2 1/32	1 19/32	5/8
PL-228-3S	27/32	2 1/16	2 1/32	1 19/32	5/8



NOTE ~ MATING RECEPTACLE TMC PART NUMBER JJ-256

NOTICE TO PERSONS RECEIVING THIS DRAWING

THE TECHNICAL MATERIEL CORPORATION claims proprietary right in the material disclosed hereon. This drawing is issued in confidence for engineering information only and may not be reproduced or used to manufacture anything shown hereon without permission from THE TECHNICAL MATERIEL CORPORATION to the user. This drawing is loaned for mutual assistance and is subject to recall at any time.

Property of:  
THE TECHNICAL MATERIEL CORPORATION  
MAMARONECK, NEW YORK

SPECIFICATIONS

NON-LOCKING TYPE  
POLARIZED CONTACT ARRANGEMENT  
DIELECTRIC: MOLDED MICA-FILLED PHENOLIC CONTACTS:  
MALE: Brass, Silver Plated, Gold Flashed  
FEMALE: Beryllium Copper, silver plated, gold flashed  
HOUSING: Aluminum

**STANDARD DRAWING**

NOTES

MFR REF ~ AMPHENOL Series 126, See Chart for full Number

REQ'D.	ITEM	PART NUMBER	DESCRIPTION	SYMBOL
<b>LIST OF MATERIAL</b>				
MATERIAL		See Specs.		
FINISH		See Specs.		
		<b>THE TECHNICAL MATERIEL CORP. MAMARONECK, NEW YORK</b>		
		TITLE CONNECTOR, PLUG, ELECTRICAL		
UNLESS OTHERWISE SPECIFIED DIMENSIONS ARE IN INCHES AND INCLUDE CHEMICALLY APPLIED OR PLATED FINISHES	DRAWN J.D. Mann 7/9/62	DATE 7/9/62	FINAL APPROVAL BP	DATE
DECIMALS .X ± .05 .XX ± .01 .XXX ± .005	TOLERANCES	FRACTIONS ± 1/64 ANGLES ± 0° 30'	PL-228	A
			SHEET	REV. LTR.