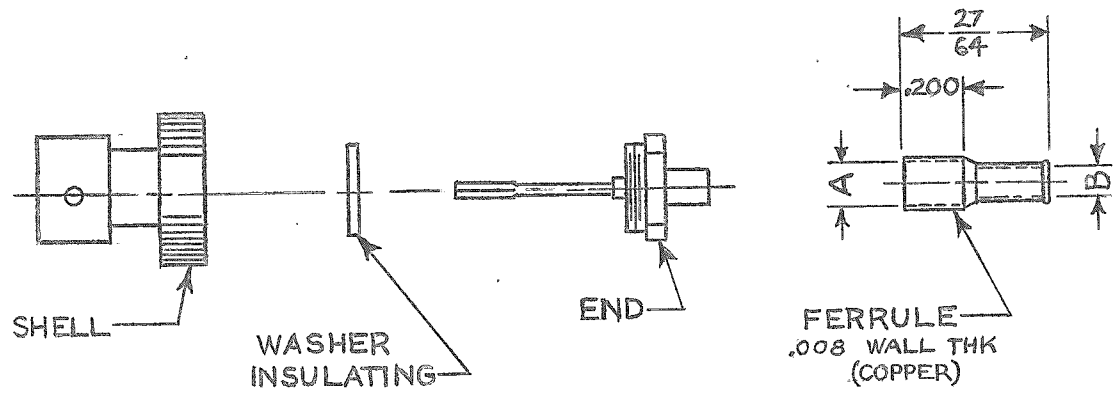


PL 243-1	MFRS PART NO. 2-330059-1	FERRULE				REQ. PER UNIT	USED ON			PL 243	Ø
		"A" I.D.	"B" I.D.	COLOR	CABLE ACCOMMODATED		MODEL	ASS'Y. NO.	DATE		
		.150	.115	ORANGE	RG-174/U		STD	3-16-64			

- SPECIFICATIONS**
- QUANTITY OF CONTACTS: ONE
 - QUANTITY OF MATING ENDS: ONE
 - CONTACT DATA
 - IDENTICAL CONTACTS: 1
 - TYPE: MALE
 - STYLE: PIN
 - CURRENT RATING:
 - DCWV:
 - ACWV:
 - IMPEDANCE IN OHMS:
 - CONTACT CONNECTED TO SHELL: NO
 - CONTACT WIRED FOR EXTERNAL GRD: NO
 - MATERIAL: BERRILIUM COPPER
 - FINISH: GOLD PLATE OVER SILVER PLATE
 - DIELECTRIC: POLYPROPYLENE
 - SHELL
 - TYPE: INCLOSING
 - MATERIAL: BRASS
 - FINISH: NICKEL PLATE
 - POLARIZATION: BAYONET
 - LOCKING TYPE: TWIST
 - CABLE ACCOMMODATION DATA
 - COAX CABLE (SEE CHART)
 - CABLE CLAMP: CRIMP
 - MATES WITH: BNC RECEPTACLES
 - TOOL NO. 69245-2



STANDARD DRAWING

Ø	ORIGINAL RELEASE FOR PRODUCTION	9/10/64	Ø	RL			REQ. ITEM	PART NO.	I. JOHNSON DESCRIPTION			SYMBOL		
X1	MFR WAS S401-71 CONT MAT. WAS BRASS CONT FINISH WAS SILVER MFR P/N WAS 2-330060-1	6/25/64	X1	AM	jr		---	---	THE TECHNICAL MATERIEL CORP. MAMARONECK. NEW YORK					
X	EXPERIMENTAL RELEASE	3/16/64		NP			---	---	CONNECTOR, BNC PLUG, CRIMP					
SYM	DESCRIPTION	DATE	CH. NO.	DRAFTS	CHECKER	ENG. APP.	MATERIAL			KIT				
UNLESS OTHERWISE SPECIFIED DIMENSIONS ARE IN INCHES AND INCLUDE CHEMICALLY APPLIED OR PLATED FINISHES		SCALE	---				TYPE & TEMPER		HEAT TREAT. SPEC.	Drawn: No Peters	Checked: @	Final Approval: RLC		
DECIMALS .X ± .05 .XX ± .01 .XXX ± .005	TOLERANCES	FRACTIONS ± 1/64 ANGLES ± 0° 30'	CODE	S401-279			FINISH & SPEC. NO.		ELEC. DES. APP.		MECH. DES. APP.		PL 243	Ø