

STANDARD DRAWING

PL247
C

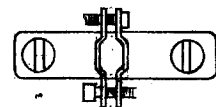
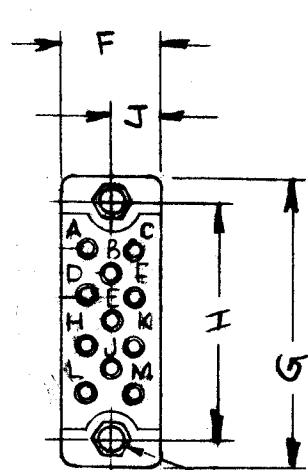
REVISIONS

SYM	DESCRIPTION	DATE	E.M.N. NO.	DRAFT	CHKD	APPD
X	EXPER. RELEASE	6-11-64	1			JM
Ø	ORIGINAL RELEASE FOR PRODUCTION	9-23-64	Ø			JM
A	PL247-2 * ADD. TO TMC P/N CHART.	2-3-65	13411			JM
B	DRWG UPDATED (DIM & PICT)	5-2-66	16189			JM
C	OPTIONAL NOTE & VIEW "A" ADDED	7-11-66	16519			JM

TMC PART NO.	MFG PART NO	No. OF CONTACTS	HOOD TYPE	DIMENSIONS											
				A	B	C	D	E*	F	G	H	J	K	L	M
PL247-1 *	MM11*-SK-HI	11	SIDE OPENING	.78	.50	.33	1.06	FOR REF ONLY .22 D.	.270	.780	.532	.135	.27	.41	.532
PL247-2 *	MM11*-SK-H	11	TOP OPENING	.78	.50	.33	1.06	FOR REF ONLY .22 D.	.270	.780	.532	.135	.27	.41	.532

CONTACT DATA

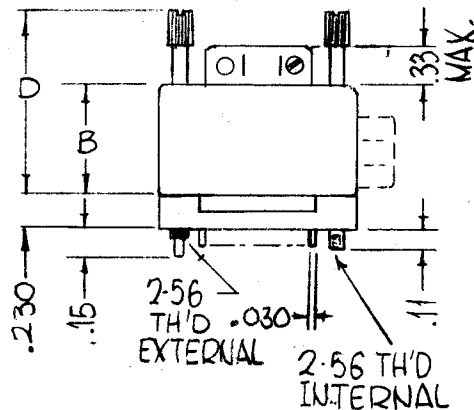
TYPE: MALE OR FEMALE
 STYLE: ROUND
 CURRENT RATING: 3 AMPS MAX.
 VOLTAGE BREAKDOWN AT SEA LEVEL: 1800V. RMS
 MATERIAL: PHOSPHER BRONZE
 FINISH: GOLD OVER SILVER
 WIRE SIZE ACCOMODATED: #22 AWG.
 CONTACTS: CENTER TO CENTER .094" MIN.
 CONTACTS MATES WITH: JJ311
 ALL SOLDER CUPS TO BE FREE OF BURRS
 DIELECTRIC: DIALLYL PHTHALATE
 COLOR: GREEN
 SHELL DATA:
 MATERIAL: ALUMINUM (52S)
 FINISH: ANODIZED
 POLORIZATION: KEY
 LOCKING: SCREWLOCK



VIEW "A"

2.56 X 1/4 LG.
(2 REQ'D)

* NOTE: ANGLE OF CABLE CLAMP OPTIONAL (SEE VIEW "A")



WIRING SIDE OF MALE CONNECTOR SHOWN

GUIDE PIN OR SCREW LOCK

PART NO. DESCRIPTION
 PL247 - I S
 BASIC P/N TYPE SEE CHART * CONTACTS P-PIN S-SOCKET

Q'TY./UNIT	MODEL USED ON	ASS'Y. NO.
#	ARCA-1	S401-136

THE CONTENTS OF THIS DRAWING ARE THE EXCLUSIVE PROPERTY OF THE TECHNICAL MATERIEL CORP. ITS UNAUTHORIZED USE OR REPRODUCTION IN WHOLE OR IN PART IS STRICTLY FORBIDDEN.

REQ'D.	ITEM	PART NUMBER	DESCRIPTION	SYMBOL
LIST OF MATERIAL				
MATERIAL		THE TECHNICAL MATERIEL CORP.		
FINISH		MAMARONECK, NEW YORK		
		TITLE: CONNECTOR, PLUG, (W/HOOD) MICRO MINIATURE		
UNLESS OTHERWISE SPECIFIED DIMENSIONS ARE IN INCHES AND INCLUDE CHEMICALLY APPLIED OR PLATED FINISHES		DRAWN: SRG CHECKED: JM ELECT. DES.: [Signature] MECH. DES.: JC	DATE: 6-11-64 DATE: 9-24-64 DATE: 7/25/64 DATE: 9/24/64	FINAL APPROVAL: [Signature] PL247 SHEET: C
DECIMALS	TOLERANCES	FRACTIONS	DATE	REV. LTR.
.X ± .05 .XX ± .01 .XXX ± .005		± 1/64 ANGLES ± 0° 30'		

NOTES