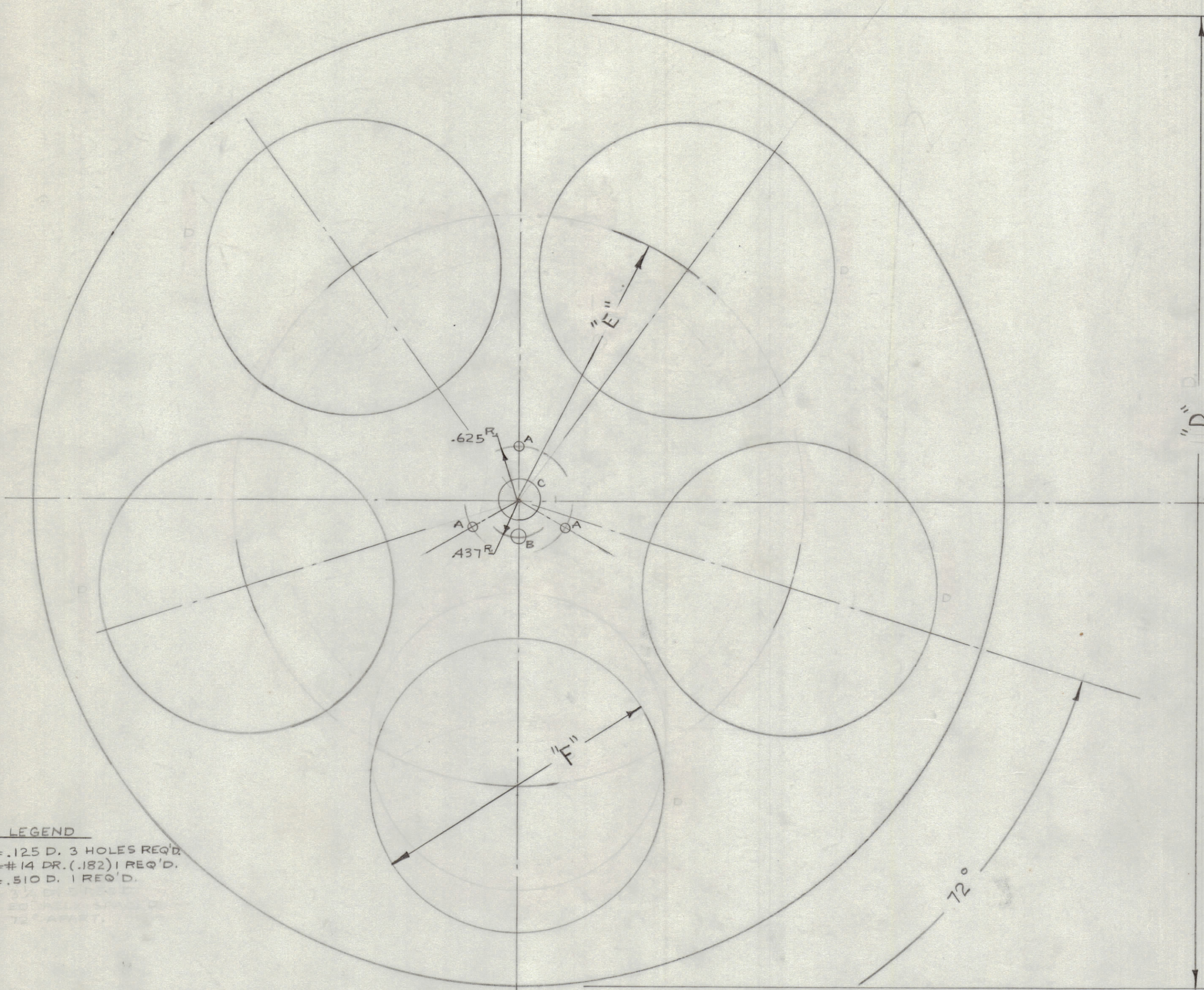


IF IT IS FOUND DESIRABLE TO CHANGE ANY TOLERANCE OR OTHER DETAIL SPECIFIED ON THIS DRAWING NOTIFY THE PURCHASER PROMPTLY.

MAXIMUM ALLOWABLE TOLERANCES HAVE BEEN DETERMINED AND DEVIATIONS WILL BE CAUSE FOR REJECTION. REMOVE ALL BURRS AND SHARP EDGES

RELEASED

NOTICE TO PERSONS RECEIVING THIS DRAWING
 THE TECHNICAL MATERIEL CORPORATION claims proprietary right in the material disclosed hereon. This drawing is issued in confidence for engineering information only and may not be reproduced or used to manufacture anything shown hereon without permission from THE TECHNICAL MATERIEL CORPORATION to the user. This drawing is loaned for mutual assistance and is subject to recall at any time.
 Property of:
 THE TECHNICAL MATERIEL CORPORATION
 MAMARONECK, NEW YORK



LEGEND
 A = .125 D, 3 HOLES REQ'D.
 B = #14 DR. (.182) 1 REQ'D.
 C = .510 D, 1 REQ'D.

NOTE:
 1. S-404 (YELLOW IRIDITE)
 2. S-114 (ZINC CHROMATE PRIMER)
 3. S-117 (BLACK WRINKLE PAINT)

PM-176-A

MODEL	REEL NO.	DIA. "D"	RADIUS "E"	DIA. "F"
R-8	PM-176-1	8"	2 1/32	2 3/8
R-10	PM-176-2	10	3	3
R-12	PM-176-3	11 1/2	3 3/8	3 1/6

ISSUE	ITEM	CHANGED FROM	DATE	CN. NO.	DRAFTS	CHECKER	ENG. APP.
A	1	S-404 YEL. IRIDITE WAS S-101 CAUSTIC DIP	12/11/54	1001	AB		EMN

TOLERANCES: DEC. DIM. ± .005, FRAC. DIM. ± 1/64, ANGULAR DIM. ± 1°

SCALE: DRILL, PUNCH, COMMERCIAL STOCK SIZES AND MANUFACTURERS TOLERANCES ARE NOT INCLUDED.

MODEL	PROJECT NO.	ASS'Y. NO.	DATE
R-12	168	A-289	12-4-52
R-12	168	A-288	12-4-52
R-10	168	A-289	12-4-52
R-10	168	A-288	12-4-52
R-8	168	A-289	12-4-52
R-8	168	A-288	12-4-52

USED ON

REQ. ITEM	PART NO.	DESCRIPTION	SYMBOL
.064 THK.		THE TECHNICAL MATERIEL CORP.	
ALUMINUM		MAMARONECK, NEW YORK	
52S-H32		REEL SIDE	
TYPE & TEMPER		8" OR 10" OR 11 1/2"	
HEAT TREAT. SPEC.		16 12-12-52	
SEE NOTE		DRAWN	
FINISH & SPEC. NO.		ELEC. DES. APP.	
		CHECKED	
		MECH. DES. APP.	
		FINAL APPROVAL	
			PM-176-A