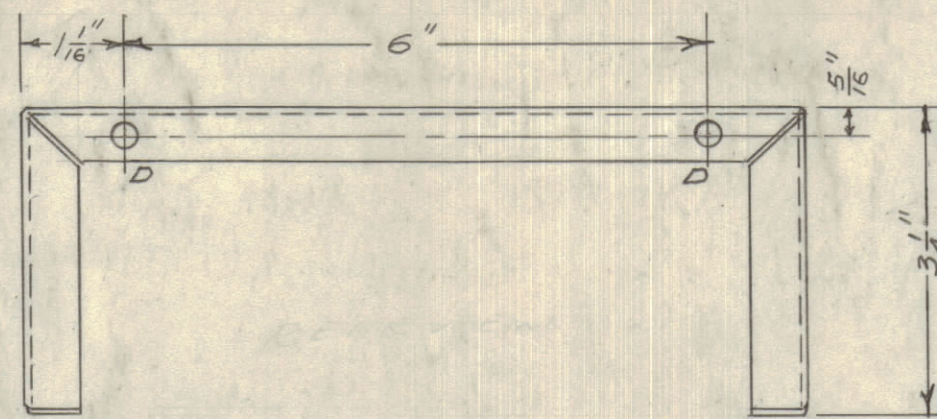


NOTICE TO PERSONS RECEIVING THIS DRAWING

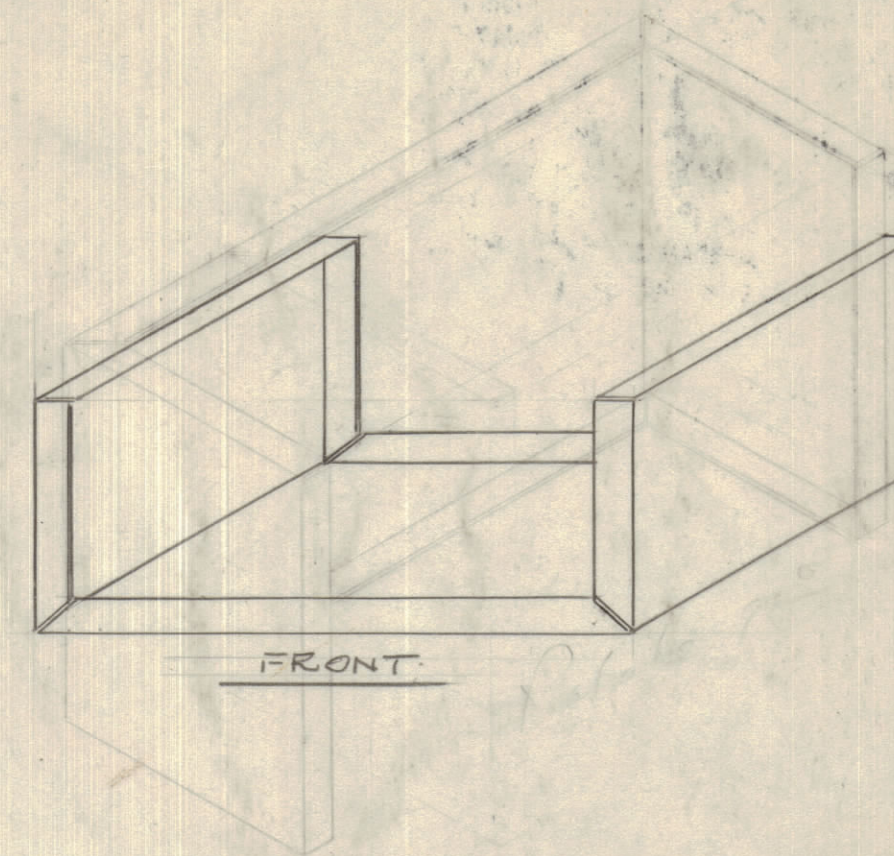
THE TECHNICAL MATERIEL CORPORATION claims proprietary right in the material disclosed hereon. This drawing is issued in confidence for engineering information only and may not be reproduced or used to manufacture anything shown hereon without permission from THE TECHNICAL MATERIEL CORPORATION to the user. This drawing is loaned for mutual assistance and is subject to recall at any time.

Property of:
THE TECHNICAL MATERIEL CORPORATION
MAMARONECK, NEW YORK

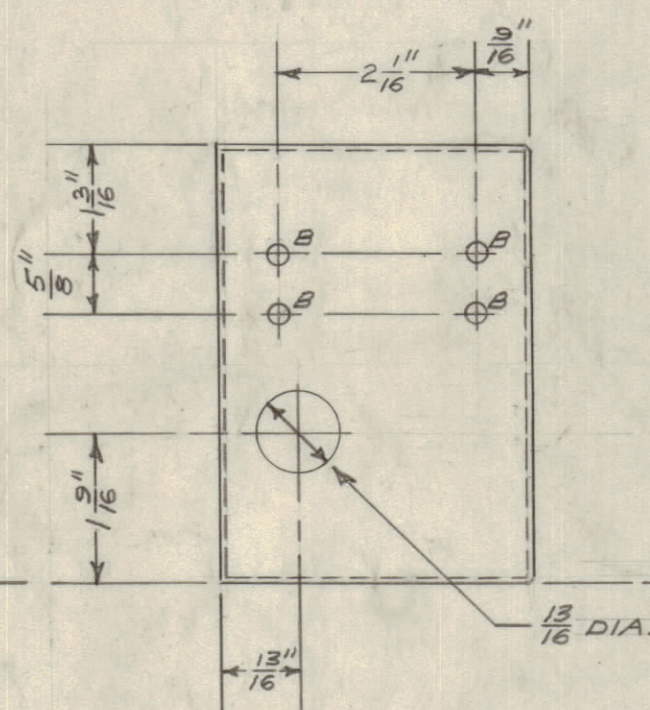
PM 10034



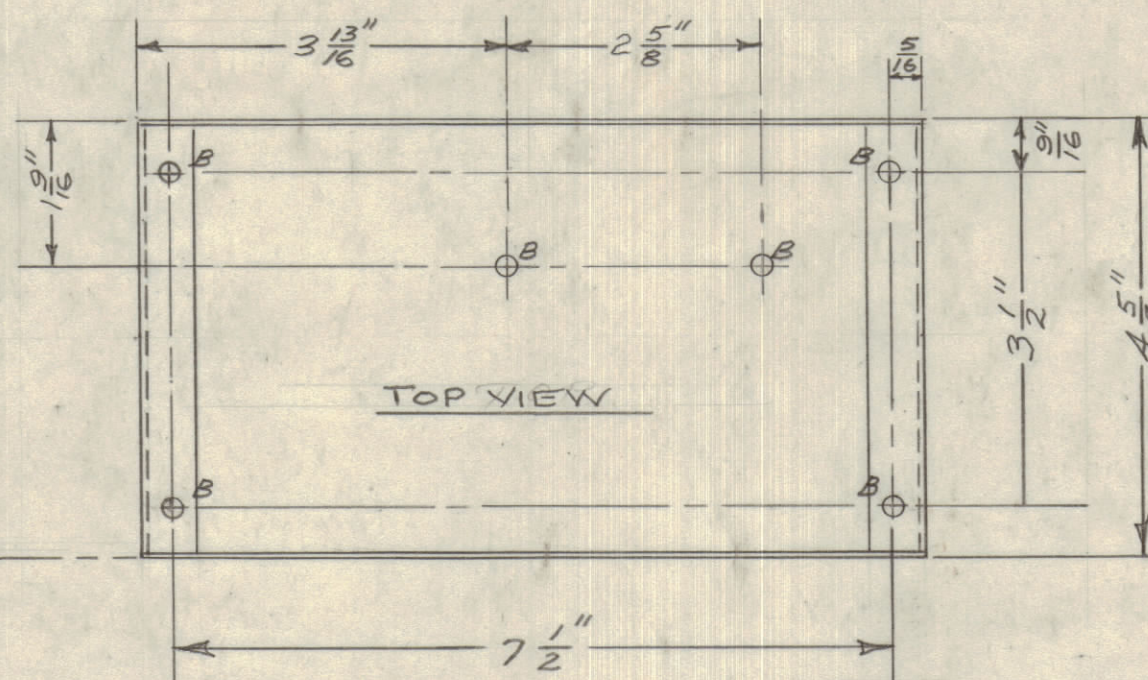
REAR VIEW



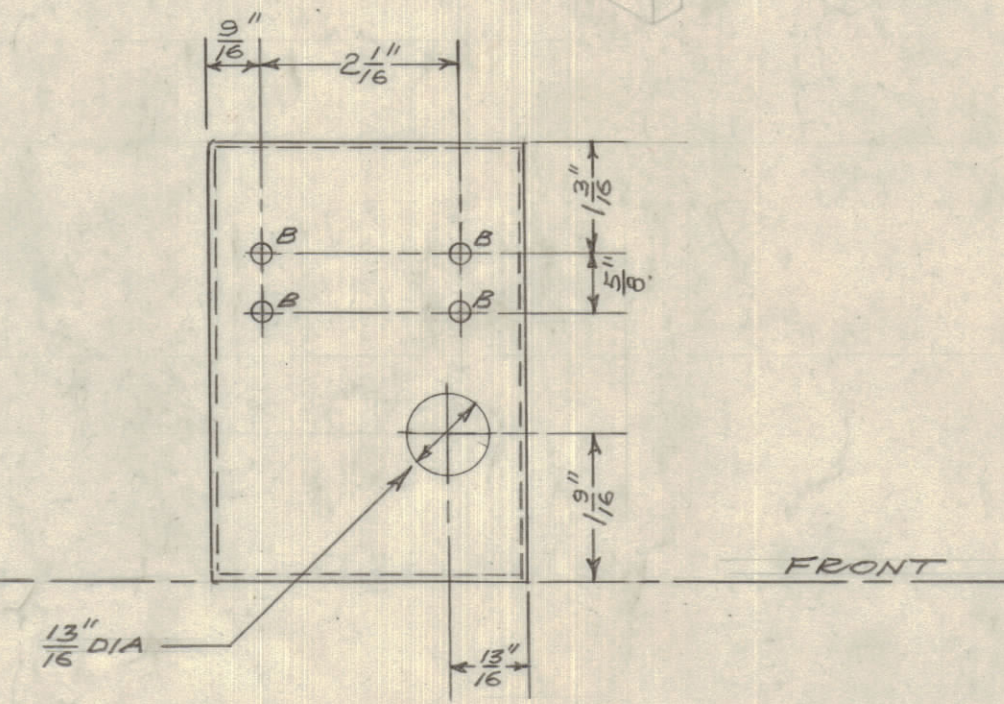
FRONT



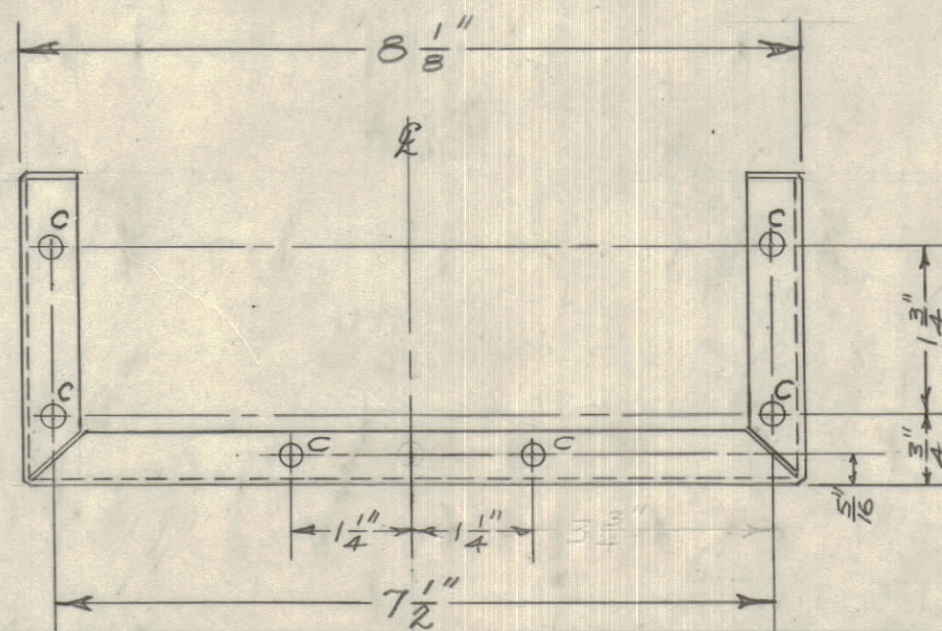
FRONT



TOP VIEW



FRONT



FRONT VIEW

- B 11/64" DIA. 14 HOLES PUNCHED
- C 18/64" DIA. 6 " "
- D 1/4" DIA. 2 " "

NOTICE TO PERSONS RECEIVING THIS DRAWING

THE TECHNICAL MATERIEL CORPORATION claims proprietary right in the material disclosed hereon. This drawing is issued in confidence for engineering information only and may not be reproduced or used to manufacture anything shown hereon without permission from THE TECHNICAL MATERIEL CORPORATION to the user. This drawing is loaned for mutual assistance and is subject to recall at any time.

Property of:
THE TECHNICAL MATERIEL CORPORATION
MAMARONECK, NEW YORK

DCP-2	PROJECT NO	ASS'Y. NO	13-5-53
MODEL	USED ON	DATE	

SCALE: HALF SIZE

.051 SHEET		TMC (Canada) LTD.	
STOCK SIZE		OTTAWA - ONTARIO	
ALUMINUM	- #	CONTROL BOX	
MATERIAL	WT. PER PC.	MODEL - DCP 2	
ALCAN - 575 - 1/2 HARD		EL.	
ALCOA - 525 - H34		DRAWN	ELEC. DES. APP.
TYPE & TEMPER		MECH. DES. APP.	
- #		JER	
HEAT TREAT SPEC.		CHECKED	
FINISH & SPEC. NO.		FINAL APPROVAL	
		P.M. 10034	