

IF IT IS FOUND DESIRABLE TO CHANGE ANY TOLERANCE OR OTHER DETAIL SPECIFIED ON THIS DRAWING NOTIFY THE PURCHASER PROMPTLY.

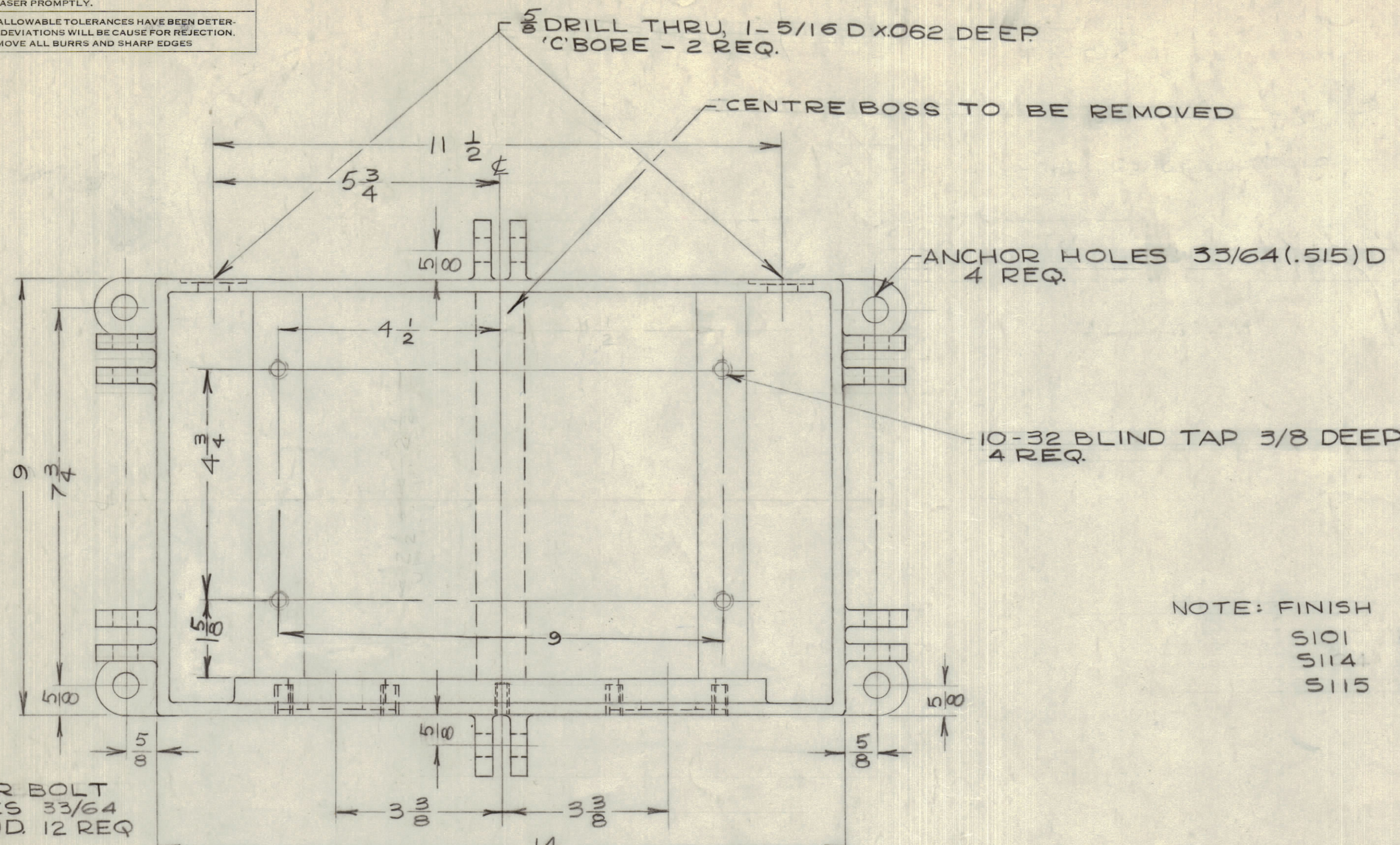
MAXIMUM ALLOWABLE TOLERANCES HAVE BEEN DETERMINED AND DEVIATIONS WILL BE CAUSE FOR REJECTION. REMOVE ALL BURRS AND SHARP EDGES

NOTICE TO PERSONS RECEIVING THIS DRAWING

THE TECHNICAL MATERIEL CORPORATION claims proprietary right in the material disclosed hereon. This drawing is issued in confidence for engineering information only and may not be reproduced or used to manufacture anything shown hereon without permission from THE TECHNICAL MATERIEL CORPORATION to the user. This drawing is loaned for mutual assistance and is subject to recall at any time.

Property of:

THE TECHNICAL MATERIEL CORPORATION  
MAMARONECK, NEW YORK

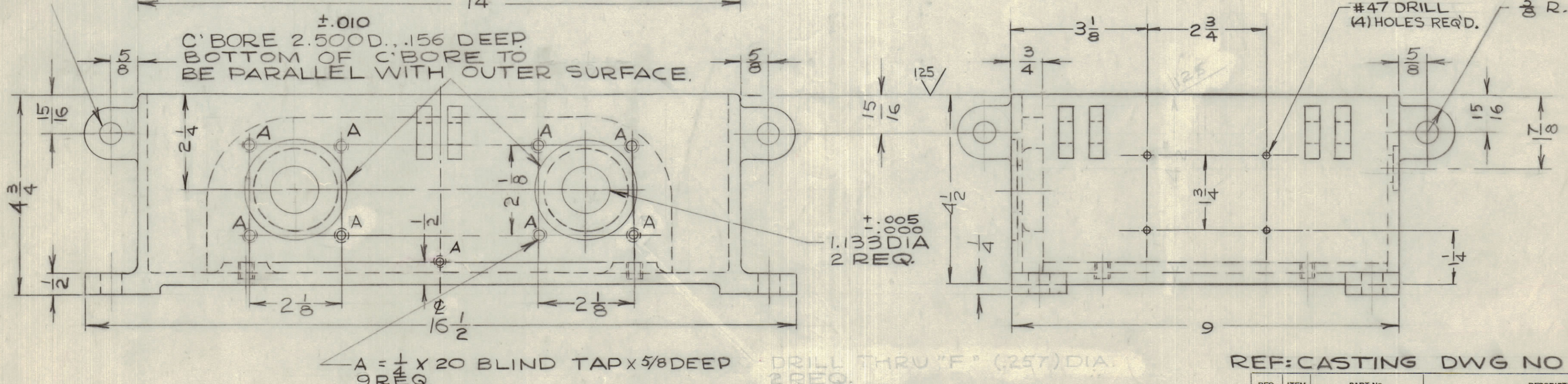


NOTE: FINISH

- S101 CAUSTIC D.D
- S114 ZINC CHROMATE PRIMER
- S115 SMOOTH GREY ENAMEL

COVER BOLT HOLES 33/64 (.515) D. 12 REQ

±.010  
C' BORE 2.500 D., .156 DEEP  
BOTTOM OF C' BORE TO BE PARALLEL WITH OUTER SURFACE.



REF: CASTING DWG NO CS-103

B 1	(4) #47 HOLES ADDED, 'A' HOLES WERE (7) REQ. 'B' HOLES DELETED	8-22-63	9837	AK	JMS	JMS	
A 1	ADDED (1) 'A' HOLE	7-26-63	9529	AK	JMS	JMS	
ISSUE	ITEM	CHANGED FROM	DATE	CN. NO.	DRAFTS	CHECKER	ENG. APP.
TOLERANCES		SCALE: 1/2					
ALL OTHERS	DEC. DIM. ± FRAC. DIM. ± ANGULAR DIM. ±	DRILL, PUNCH, COMMERCIAL STOCK SIZES AND MANUFACTURERS TOLERANCES ARE NOT INCLUDED.					

HLC  
MODEL PROJECT No. ASS'Y. No. DATE  
A10242  
A10241  
A10240 NOV 20/59  
USED ON

REQ.	ITEM	PART No.	DESCRIPTION	SYMBOL
			CASTING	
			ALUM.	
			356 -T6	
			STRESS RELIEVED	
			SEE NOTE	
			TMC (Canada) LIMITED OTTAWA ONTARIO	
			CASE MACHINING	
			JPC	
			DRAWN	
			CHECKED	
			FINAL APPROVAL	
			PM10073 B	

PM10073 B