

IF IT IS FOUND DESIRABLE TO CHANGE ANY TOLERANCE OR OTHER DETAIL SPECIFIED ON THIS DRAWING NOTIFY THE PURCHASER PROMPTLY.

MAXIMUM ALLOWABLE TOLERANCES HAVE BEEN DETERMINED AND DEVIATIONS WILL BE CAUSE FOR REJECTION. REMOVE ALL BURRS AND SHARP EDGES

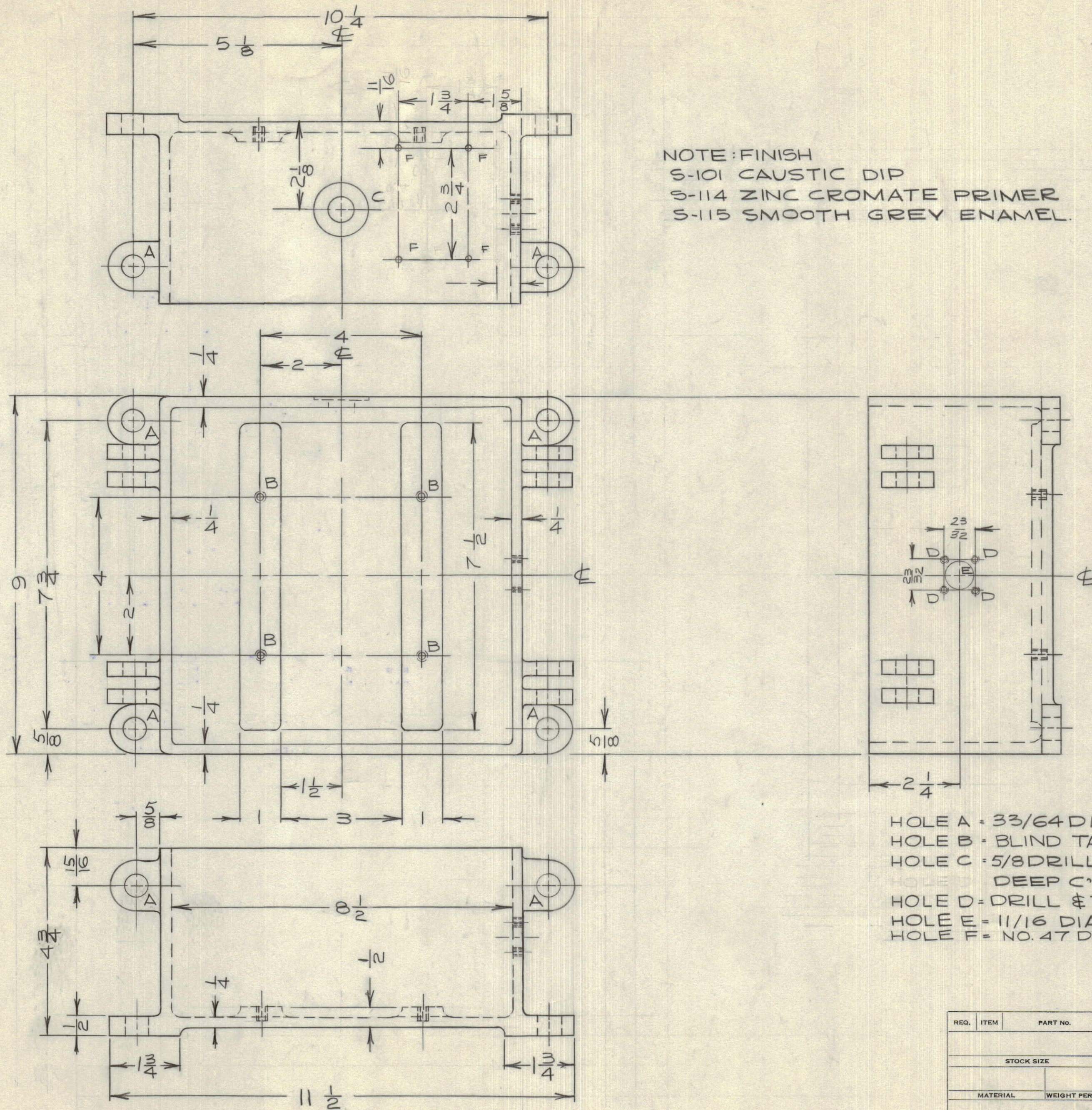
NOTICE TO PERSONS RECEIVING THIS DRAWING

THE TECHNICAL MATERIEL CORPORATION claims proprietary right in the material disclosed hereon. This drawing is issued in confidence for engineering information only and may not be reproduced or used to manufacture anything shown hereon without permission from THE TECHNICAL MATERIEL CORPORATION to the user. This drawing is loaned for mutual assistance and is subject to recall at any time.

Property of:

THE TECHNICAL MATERIEL CORPORATION
MAMARONECK, NEW YORK

NOTE: FINISH
S-101 CAUSTIC DIP
S-114 ZINC CROMATE PRIMER
S-115 SMOOTH GREY ENAMEL.



HOLE A = 33/64 DIA.
HOLE B = BLIND TAP 8-32 X 3/8 DEEP
HOLE C = 5/8 DRILL THRU, 1-5/16 D. X .062
HOLE D = DRILL & TAP 4-40.
HOLE E = 11/16 DIA.
HOLE F = NO. 47 DRILL.

PM10074

| ISSUE | ITEM | CHANGED FROM | DATE | CN. NO. | DRAFTS | CHECKER | ENG. APP. |
|------------|-------------|--------------|------|-------------------------------------------------------------------------------------|--------|---------|-----------|
| TOLERANCES | | SCALE: 1:2 | | | | | |
| ALL OTHERS | DEC. DIM. ± | FRAC. DIM. ± | 1/64 | DRILL, PUNCH, COMMERCIAL STOCK SIZES AND MANUFACTURERS TOLERANCES ARE NOT INCLUDED. | | | |

VRA-2 CAN-1.

MARCH 15/60

| | | | |
|-------|-------------|------------|------|
| MODEL | PROJECT No. | ASS'Y. No. | DATE |
| | | | |

| REQ. | ITEM | PART NO. | DESCRIPTION | SYMBOL |
|------|------|----------|-----------------------------------------------|---------|
| | | | TMC (Canada) LIMITED OTTAWA ONTARIO | |
| | | | CASE MACHINING VRA 2 CAN-1 | |
| | | | JPC DRAWN | |
| | | | MK CHECKED | |
| | | | SEE NOTE | |
| | | | FINAL APPROVAL | PM10074 |