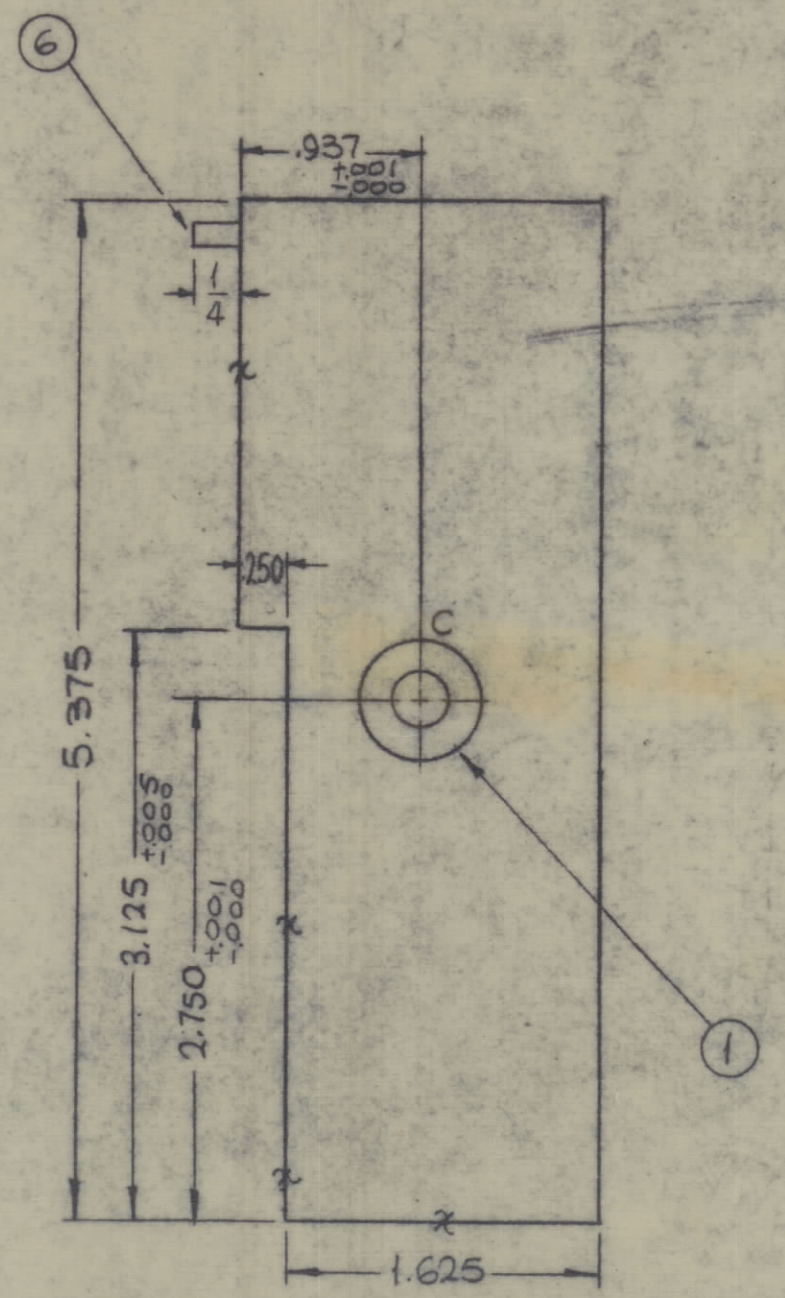
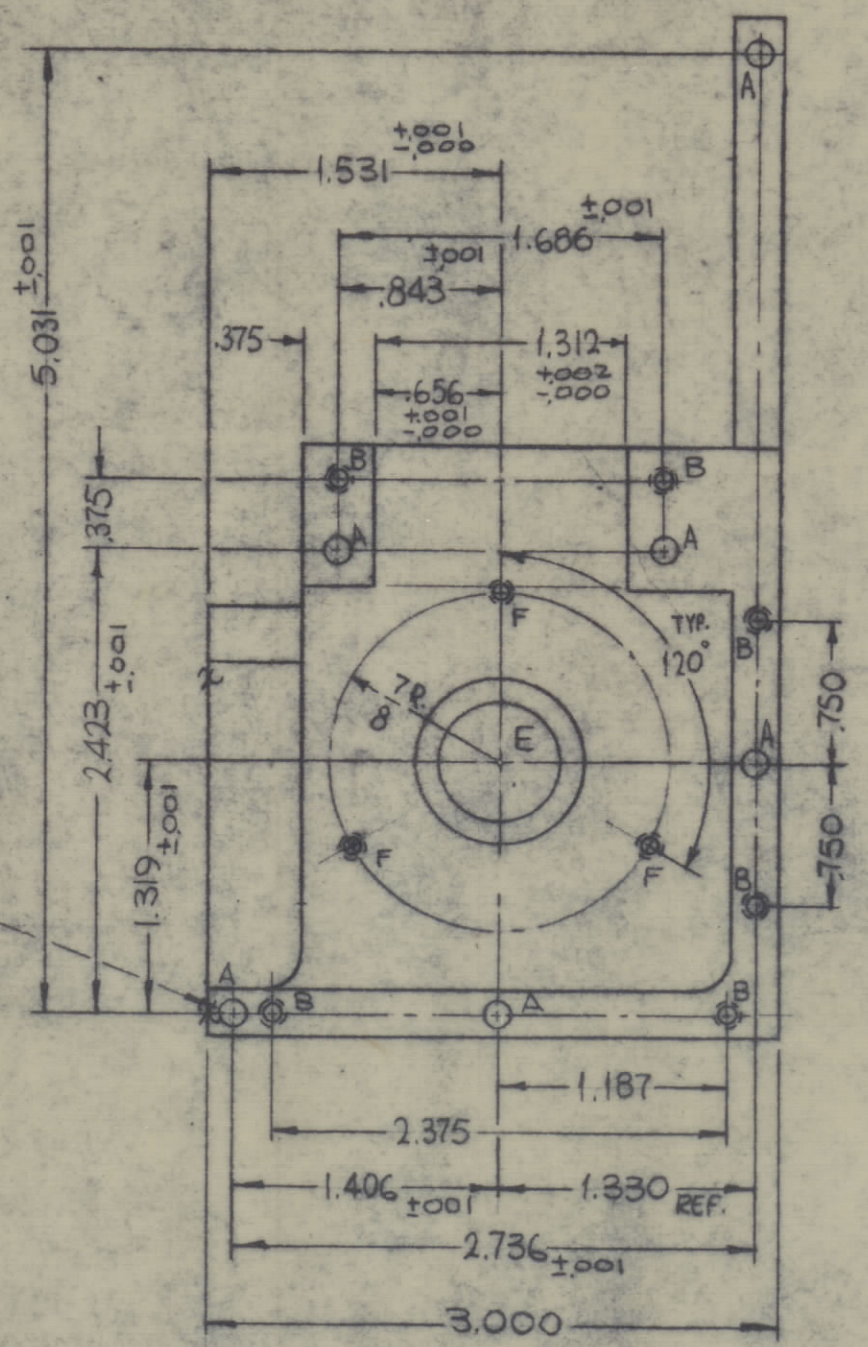
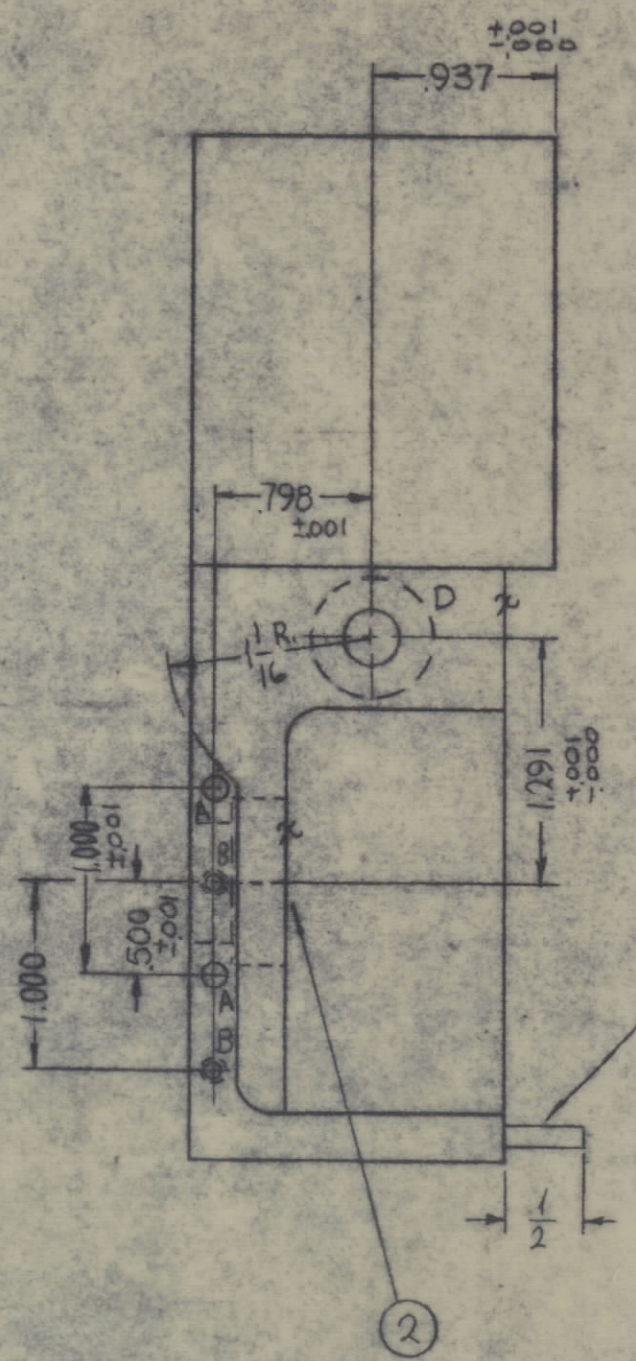
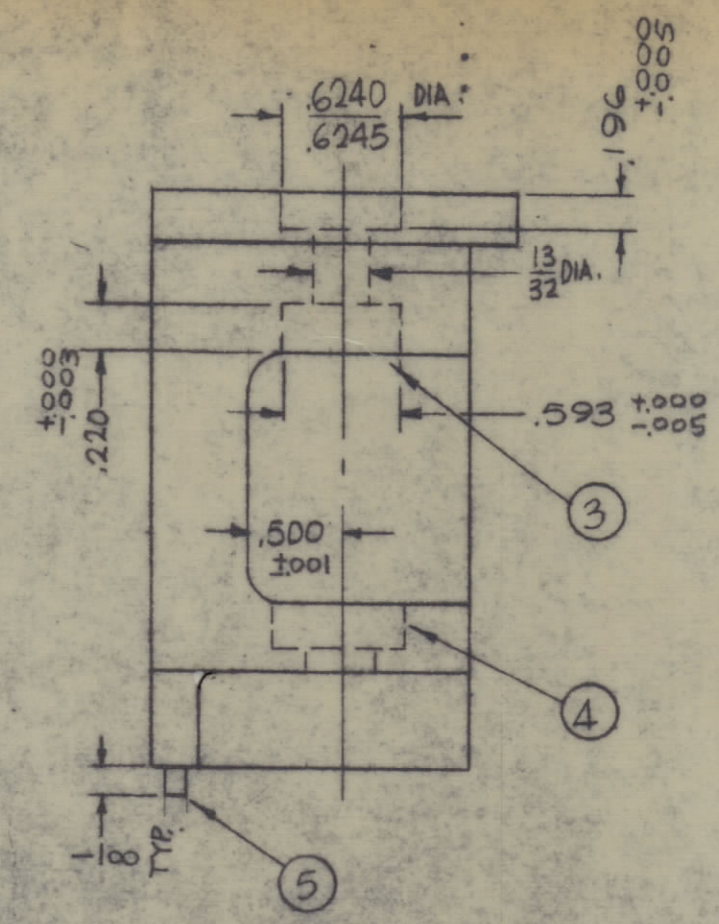


REVISIONS						
ZONE	BY	DESCRIPTION	DATE	E.S.N. NO.	DRAFT	CHKD
Ø		ORIGINAL RELEASE FOR PRODUCTION	3-14-66		HLA	



HOLES	DESCRIPTION	REQ
A	.1247-.1250 DIA X 3/16 DP.	10
B	DRILL & TAP FOR 4-40 X 3/8 DR.	8
C	DRILL 13/32 DIA. C'BORE .6240-.6245 DIA. X .196 ±.005 DP.	1
D	DRILL 11/32 DIA. C'BORE .656 ±.000 DIA. X .252 ±.003 DP.	1
E	DRILL .625 DIA. C'BORE .8740-.8745 DIA. X .281 ±.000 DP.	1
F	DRILL & TAP FOR 4-40 THRU	3

REF: CS132

1	TSTC 110K	A4315
QTY./UNIT	MODEL USED ON	ASSY. NO.
SCALE 1:1	CODE A	

THE CONTENTS OF THIS DRAWING ARE THE EXCLUSIVE PROPERTY OF THE TECHNICAL MATERIEL CORP. ITS UNAUTHORIZED USE OR REPRODUCTION IN WHOLE OR IN PART IS STRICTLY FORBIDDEN.

QTY.	ITEM	PART NUMBER	DESCRIPTION	SYMBOL
1	7	PN116-A-65	PIN, DOWEL	A
1	6	PN116-A-45	PIN, DOWEL	A
8	5	PN116-A-35	PIN, DOWEL	A
1	4	BB129-14	BEARING, RACE	D
1	3	BB129-13	BEARING, RACE	D
1	2	BB120-2	BEARING, BALL	E
1	1	BB120-1	BEARING, BALL	C

F. BUDETTI		LIST OF MATERIAL	
MATERIAL SEE CASTING		THE TECHNICAL MATERIEL CORP. MAHARONECK, NEW YORK	
FINISH S404 YELLOW IRIDITE		TITLE MACHINING, GEAR BOX, BANDSWITCH	
UNLESS OTHERWISE SPECIFIED DIMENSIONS ARE IN INCHES AND INCLUDE CHEMICALLY APPLIED OR PLATED FINISHES	DRAWN SRC	DATE 7-29-65	FINAL APPROVAL
DECIMALS ±.05	CHECKED JCB	DATE 3-9-66	DATE 3/14/66
FRACTIONS ± 1/64	ELECT. DES. JCB	DATE	DATE
ANGLES ± 9° 30'	MECH. DES. JCB	DATE 3/4/66	DATE
		SHEET	REV. LTR.

NOTES

PM1277