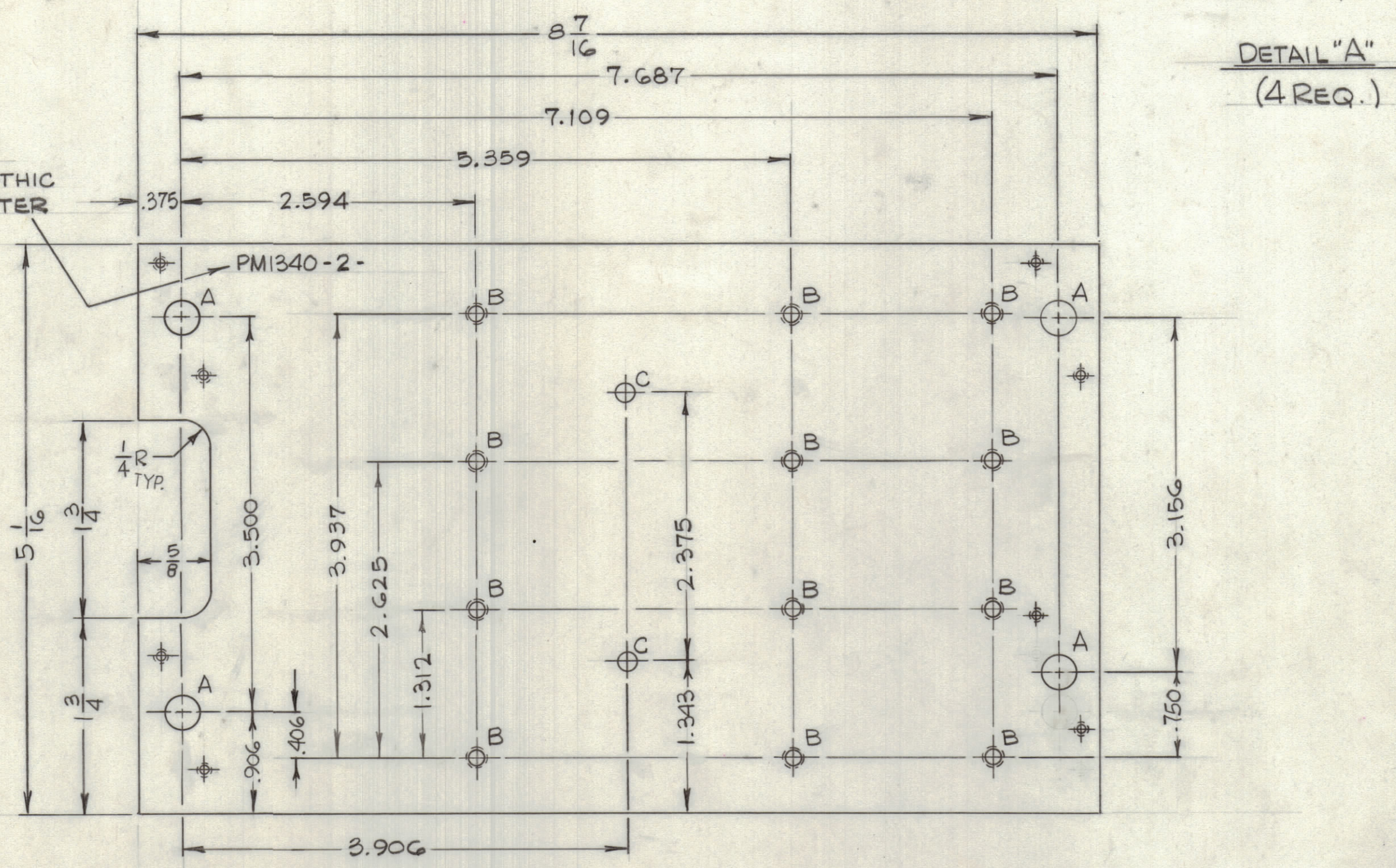


REVISIONS						
ZONE	LTR	DESCRIPTION	DATE	E.M.N.NO	DRAFT	CHKD
X		EXPERIMENTAL RELEASE	5/24/67		HCB	
Ø		ORIGINAL RELEASE	8/7/67			

MARK TMC PT. NO.
1/8 HIGH BLACK GOTHIC
W/LATEST REV. LETTER



DETAIL "A"
(4 REQ.)

HOLE	DESCRIPTION	REQ.
A	SEE DETAIL	4
B	DR. & TAP 8-32	12
C	.166 DIA.	2

PLATE, SLUG
PM1340-2

MATERIAL:
3/16 THK ALUMINUM
2024-T3

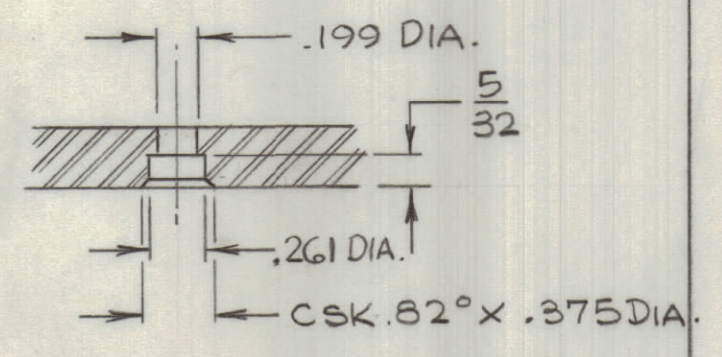
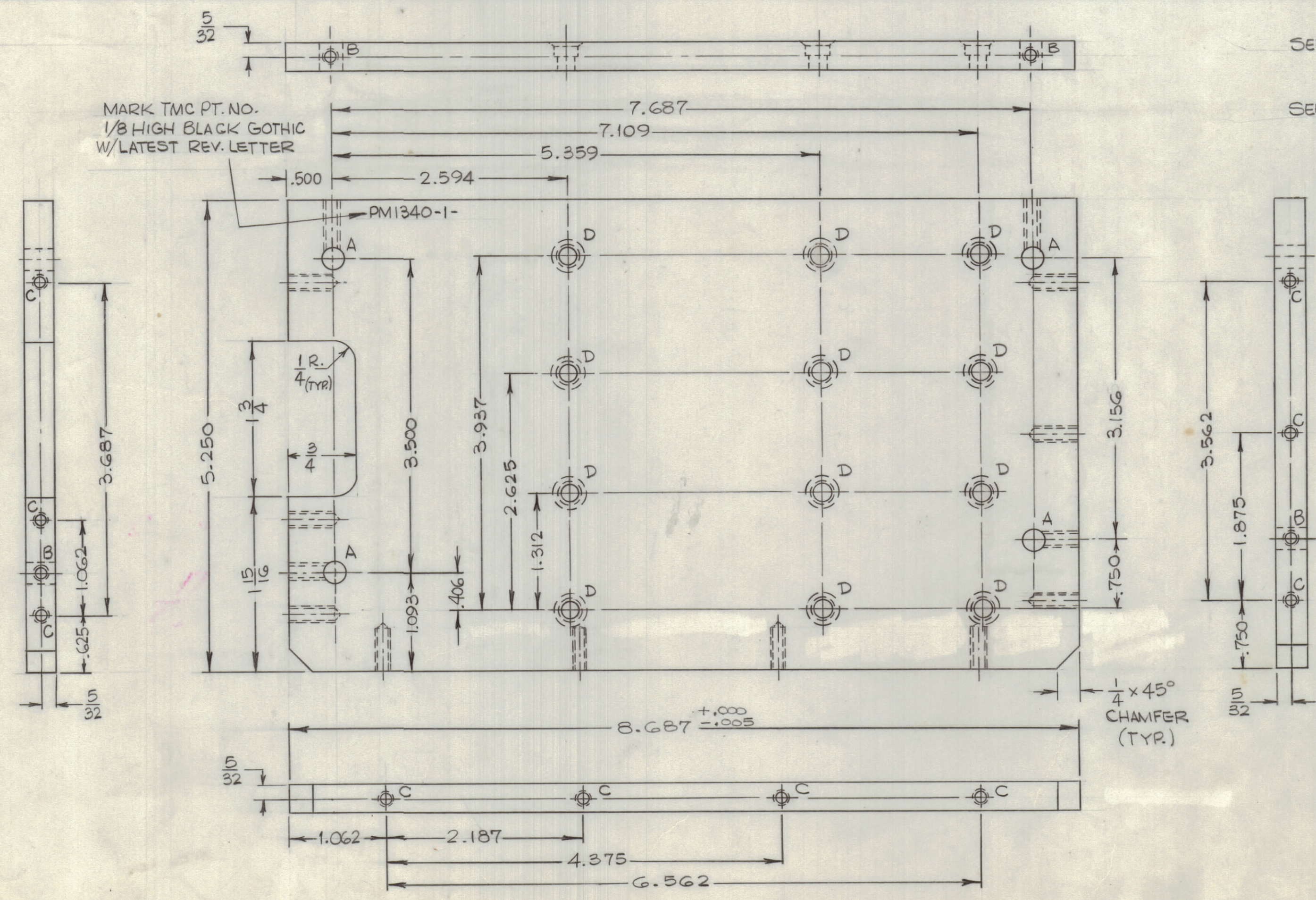
FINISH:
S404 YEL. IRIDITE

REF: LD2228

- NOTE:
- 1- FLATNESS OF BOTH PLATES TO BE HELD WITHIN .003 PER FOOT.
 - 2- REMOVE ALL BURRS & SHARP EDGES.
 - 3- "A" & "D" HOLES OF PM1340-1 & "A" & "B" HOLES OF PM1340-2 MUST BE JIG-DRILLED.

HOLE	DESCRIPTION	REQ.
A	.252 ± .001 DIA.	4
B	DRILL & TAP G-32 (PENETRATE "A" HOLES)	4
C	DRILL & TAP G-32 x 1/2 DEEP	10
D	SEE DETAIL	12

MARK TMC PT. NO.
1/8 HIGH BLACK GOTHIC
W/LATEST REV. LETTER



DETAIL "D"
(12 REQ'D)

PLATE, SUPPORT
PM1340-1

MATERIAL:
5/16 THK. ALUMINUM
2024-T3

FINISH:
S404 YEL. IRIDITE

QTY / UNIT	MODEL USED ON	ASS'Y NO.
1 EA	VLRC-1	
APPLICATION		
5401-451	CODE A	

NOTICE TO PERSONS RECEIVING THIS DRAWING
THE TECHNICAL MATERIEL CORPORATION claims proprietary right in the material disclosed hereon. This drawing is issued in confidence for engineering information only and may not be reproduced or used to manufacture anything shown hereon without permission from THE TECHNICAL MATERIEL CORPORATION to the user. This drawing is loaned for mutual assistance and is subject to recall at any time.

QTY. REQ.	ITEM	PART NO.	DESCRIPTION	SYMBOL
	A	MARTINENGO	LIST OF MATERIAL	
UNLESS OTHERWISE SPECIFIED DIMENSIONS ARE IN INCHES AND INCLUDE CHEMICALLY APPLIED OR PLATED FINISHES				
TOLERANCES ON				
DECIMALS	FRACTIONS			
.X ± .05	± 1/64			
.XX ± .01	ANGLES			
.XXX ± .005	± 0°-30'			
MATERIAL		AS NOTED		
FINISH		AS NOTED		
SIZE		D 82679		
CODE IDENT. NO.		PM1340		
DWG NO.		PM1340		
ISSUE		OF		
SCALE		1:1		

PM1340

A