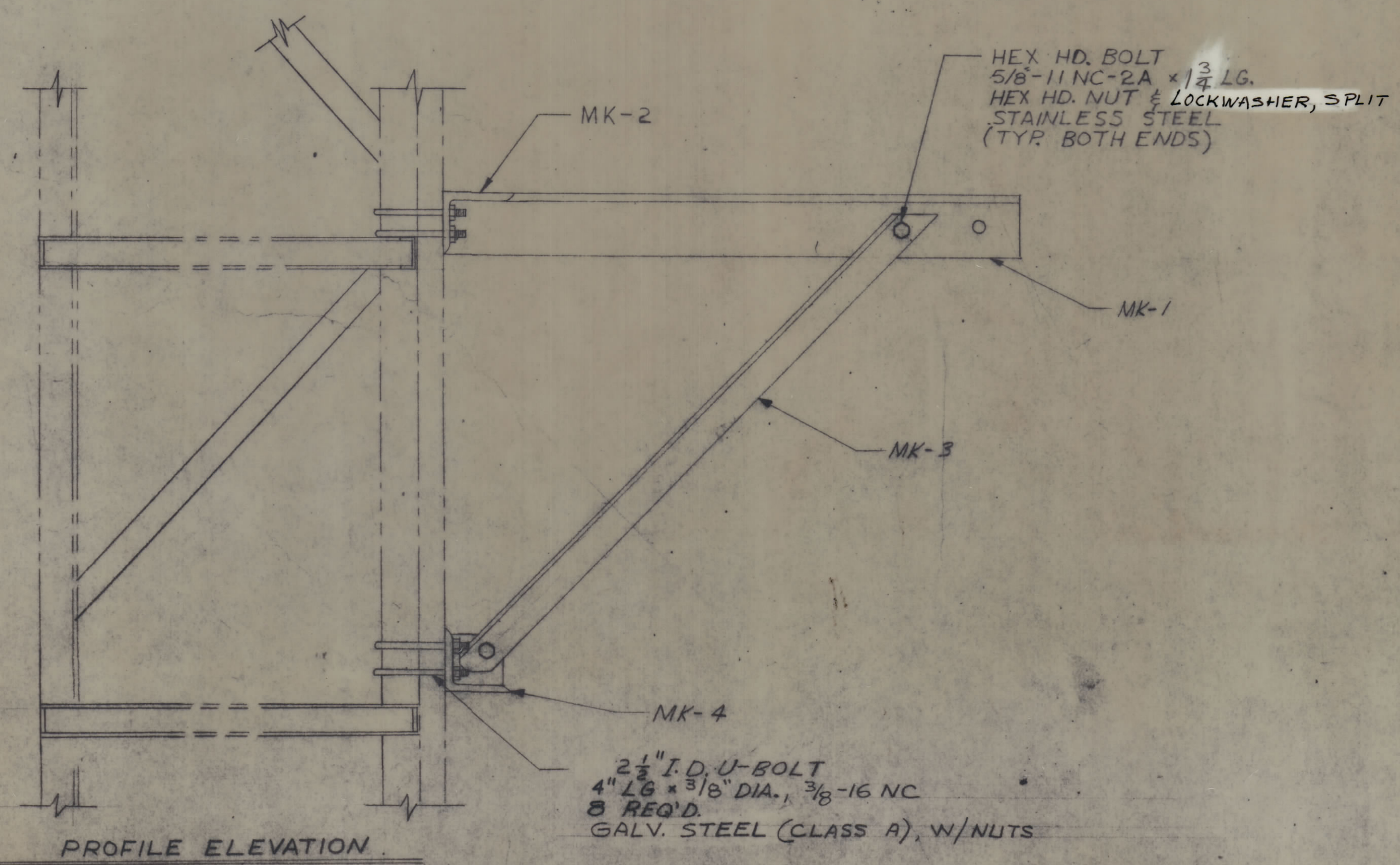
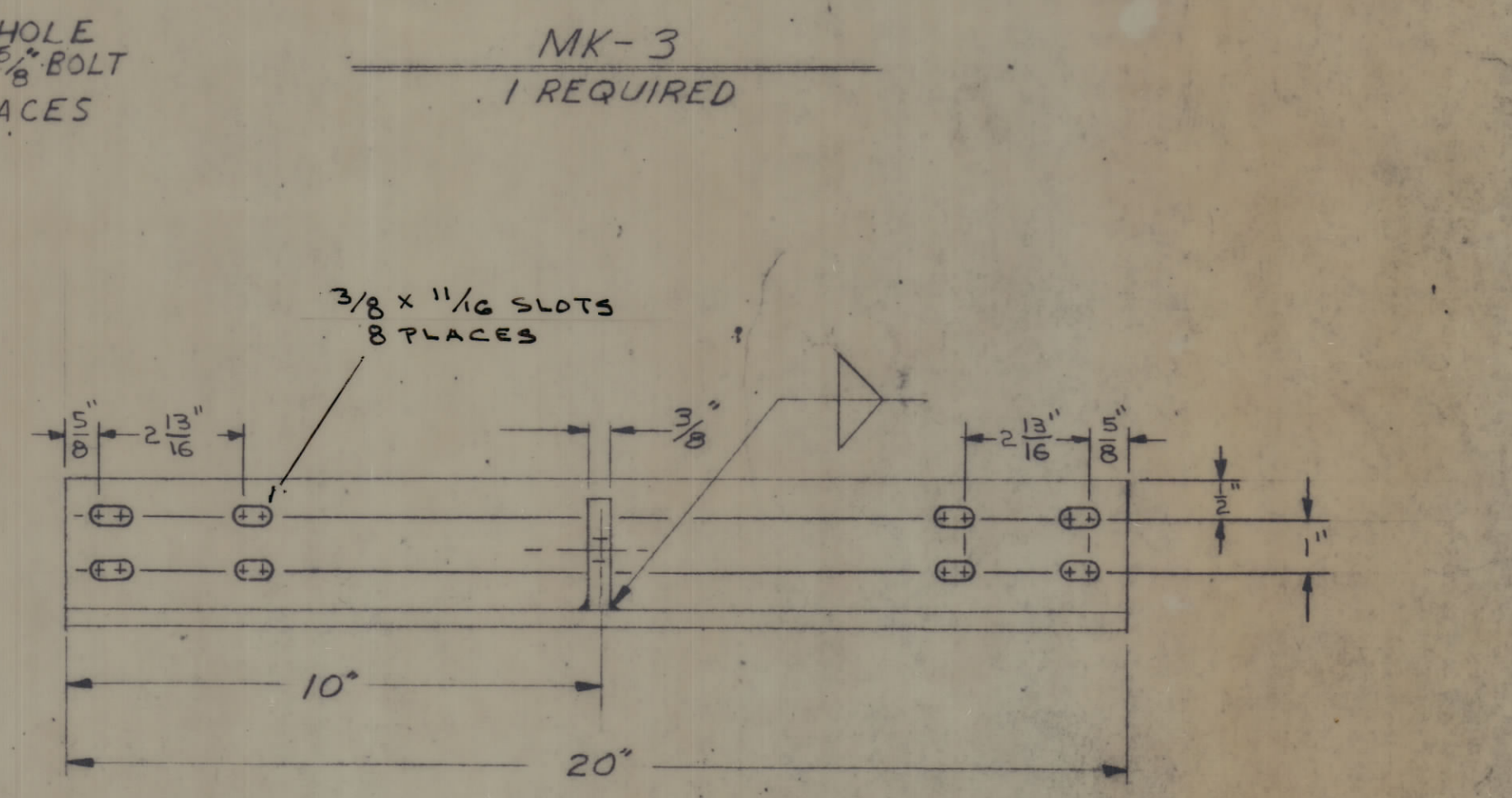
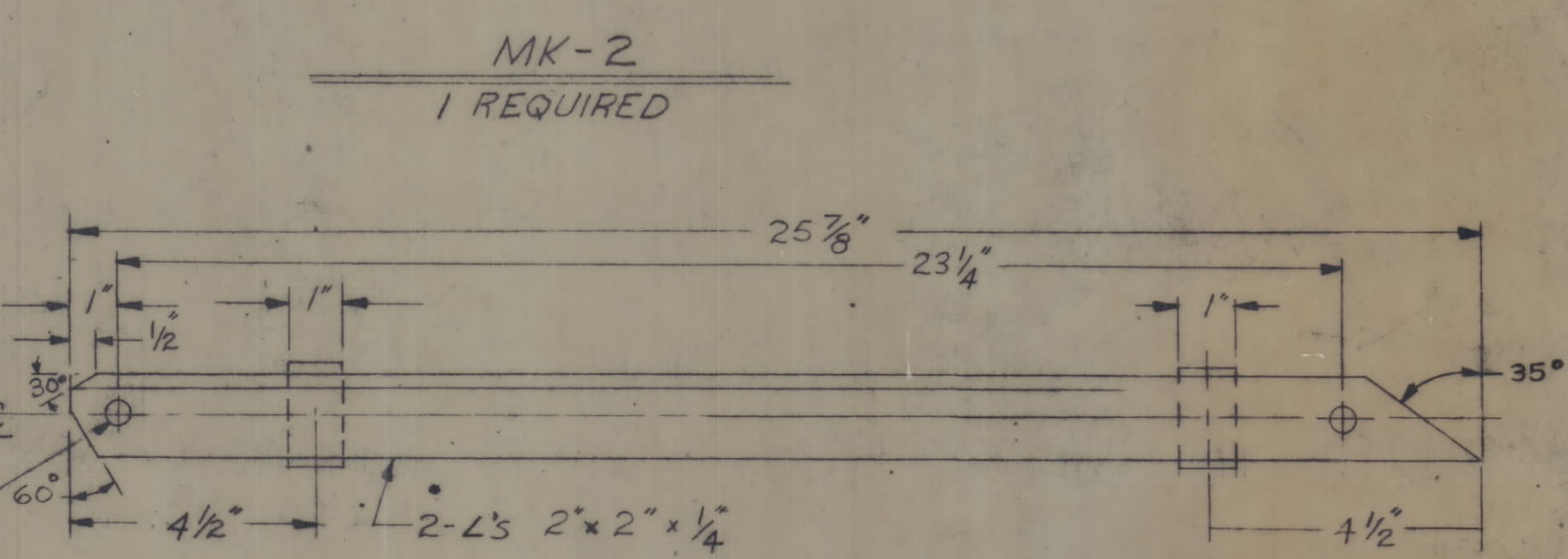
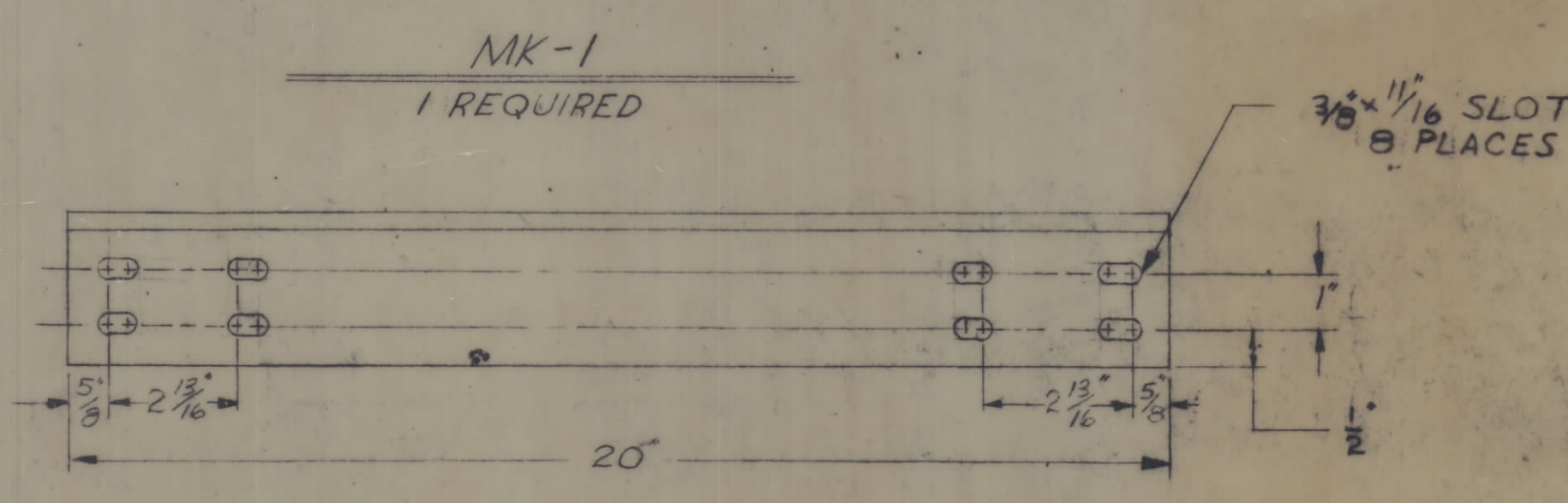
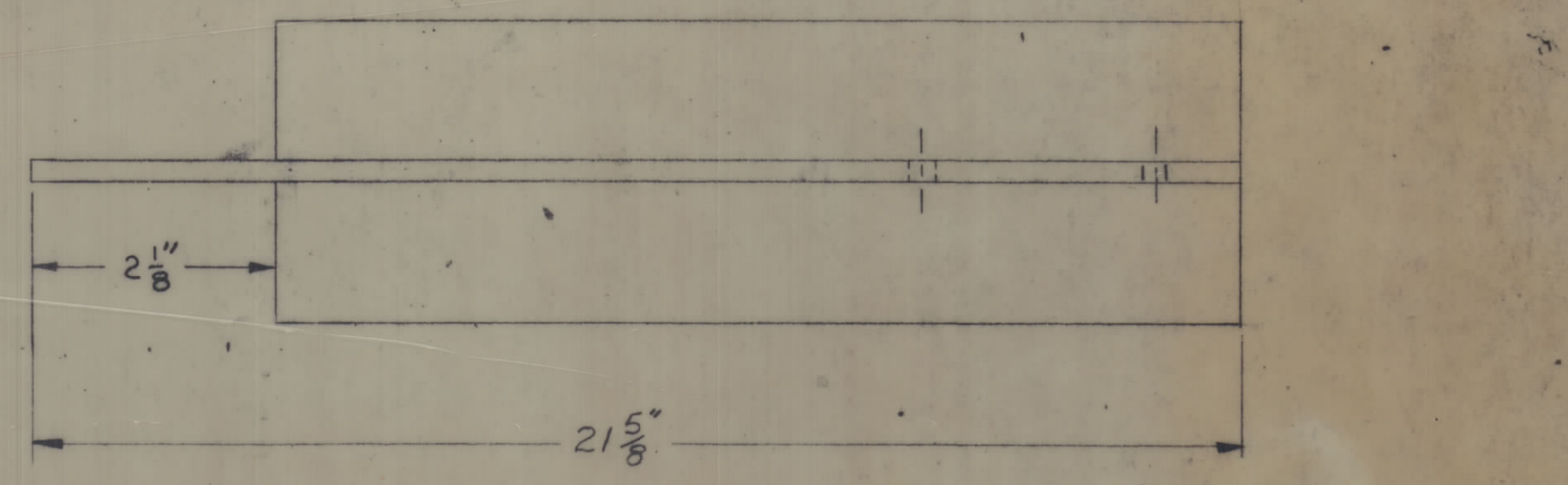
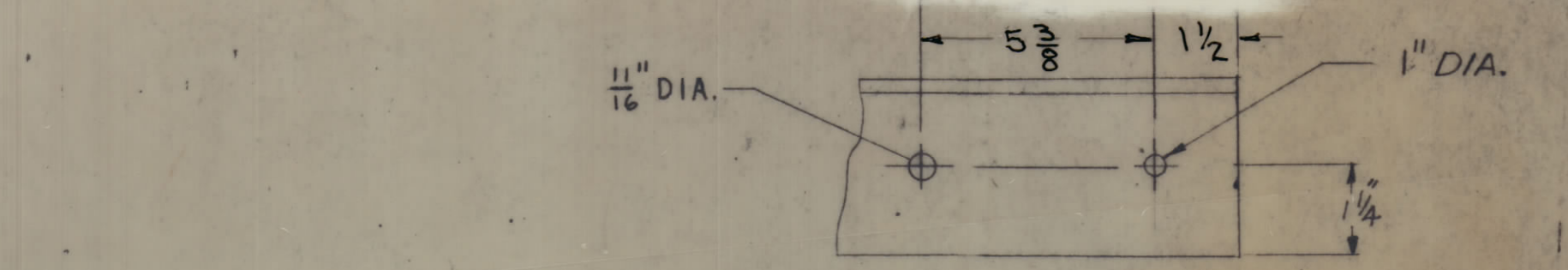
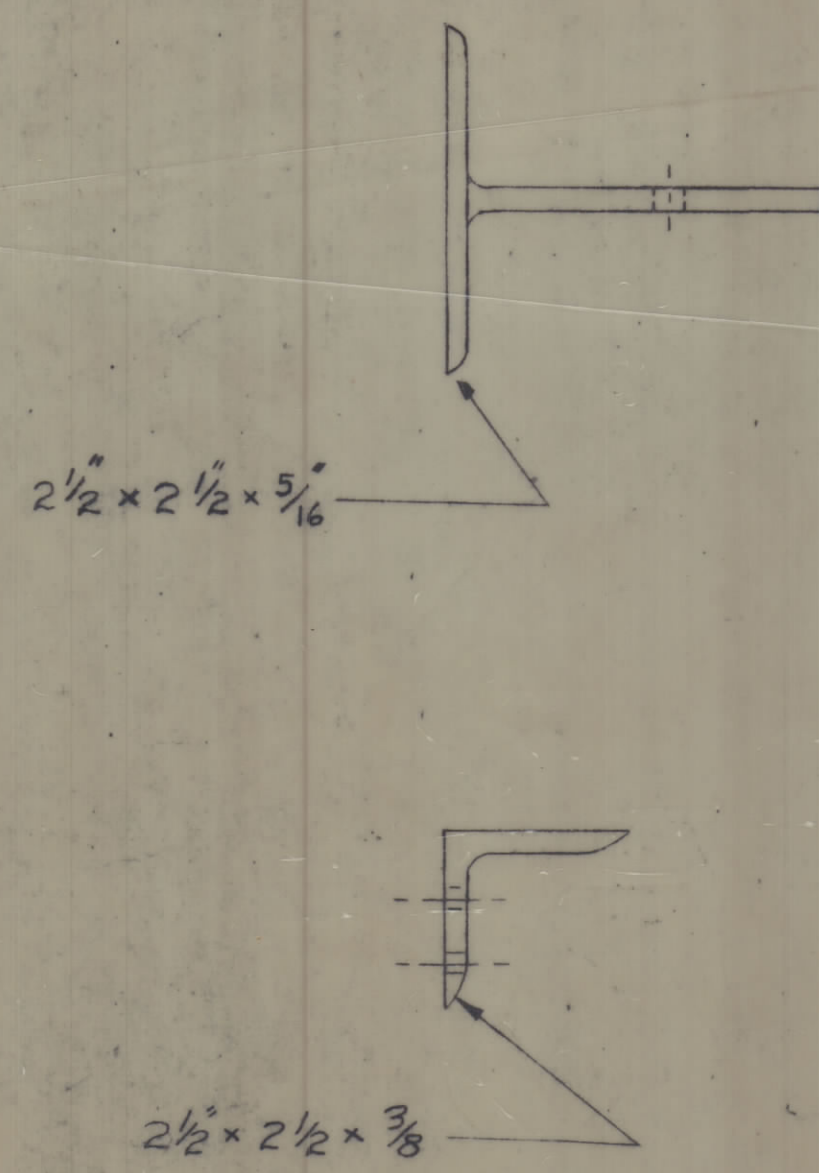
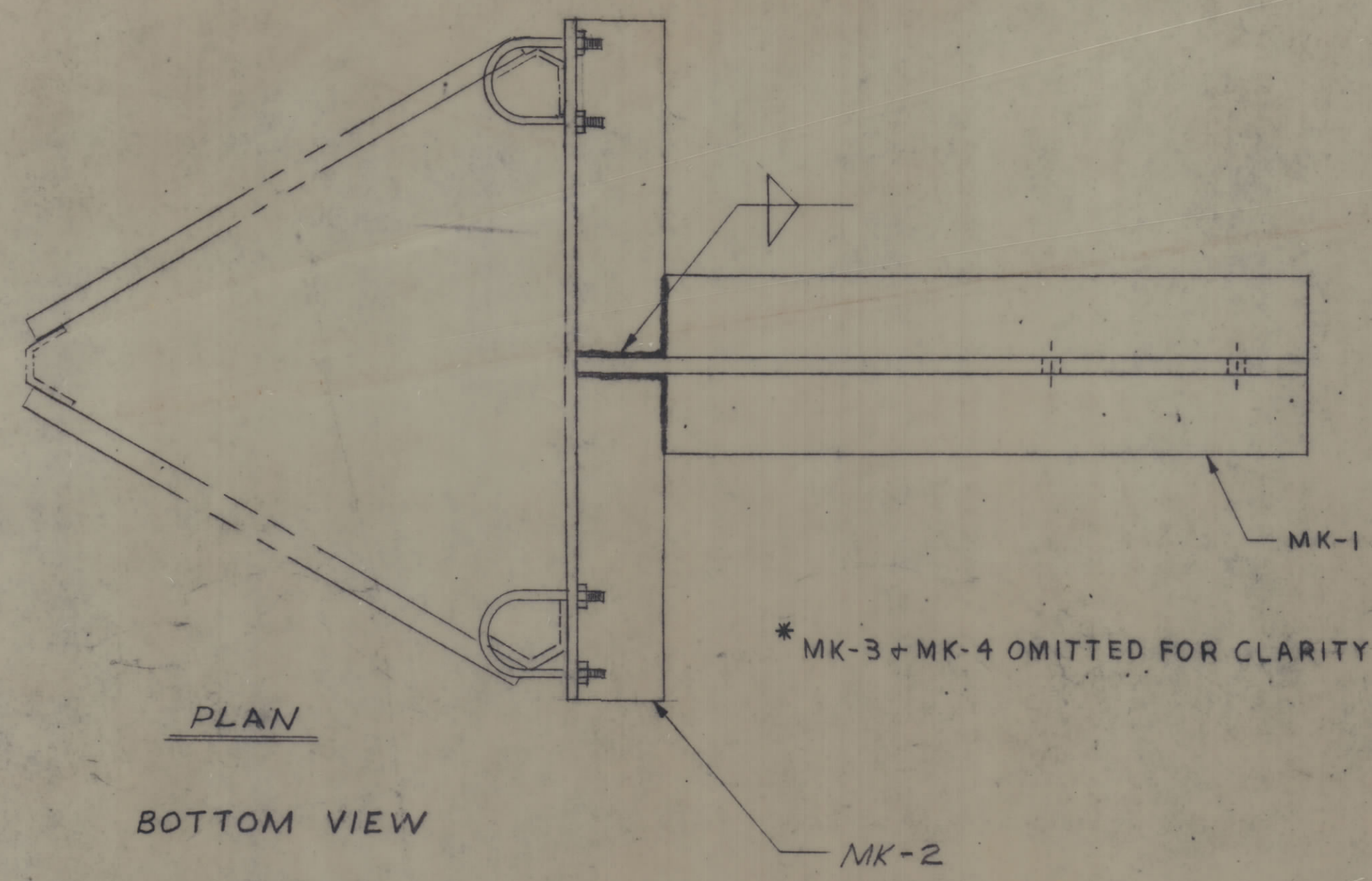


REVISIONS				
ZONE	SYM.	DESCRIPTION	DATE	APPROVAL
A		ADDED SLOTS ON MK-4, HIDDEN LINES ON MK-1, RELOCATED TOWER BRACKETS.	10-27-66	[Signature]
C7	B	LOCKWASHER, SPLIT ADDED 134 W/LS 1/2	11/7/64	[Signature]

NOTES: 1. TOWER, DETAIL NOT SHOWN TO SCALE



REQD.	PART NO.	ITEM	DESCRIPTION	MATL. OR MFR.	MATL. SPEC. OR CAT. NO.	EXT. SYM.	UNIT WT.	ZONE

UNLESS OTHERWISE SPECIFIED		SIGNATURE	DATE
DIMENSIONS ARE IN INCHES		DR. C.B.	9/13/64
TOLERANCES ON:		CHK. R. Weller	9/15/66
DEC. FRACT.	ANG.	ENGR. P.V. Gureckis	9/15/66
1/64			
MATERIAL:			
ALUMINUM			
6061-T6			
FINISH:			
ETCH # IRIDITE			

TOP LOAD SUPPORT BRACKET T.M.C. KIT #312 FOR UTILITY TOWER TYPE "170 K.D."	THE TECHNICAL MATERIEL CORP. 700 FENIMORE ROAD MAMARONECK, N. Y. PM 1436
D237702	D237705
USED ON	SCALE: NONE
NEXT ASST.	558-237-7
	SHEET 1 OF 1