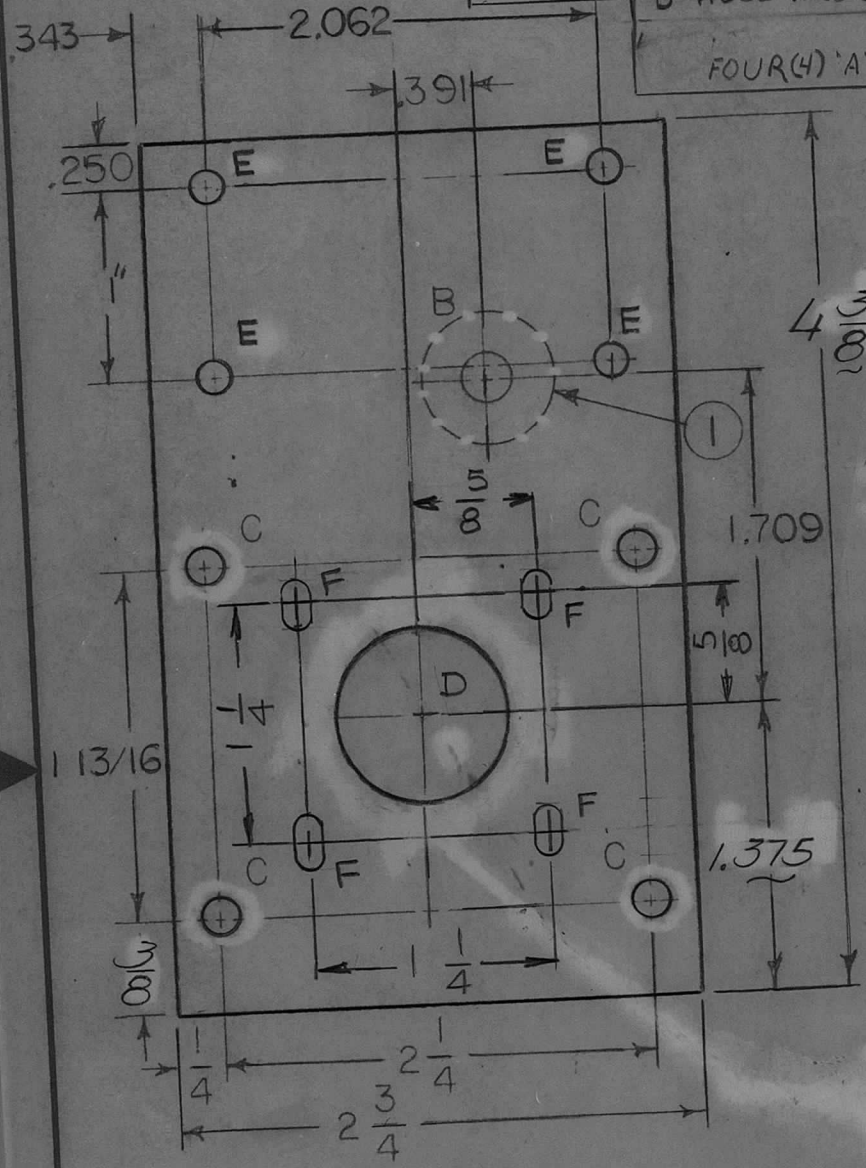


APPLICATION			REVISIONS						
QTY	MODEL USED ON	ASS'Y NO.	LTR	DESCRIPTION	DATE	E.M.N.NO	DRAFT	CHKD	APPD
1	TLAA -1K	AX5132	Ø	ORIG RELEASE FOR PROD.	9/9/71		RG		
1	KIT 407		A	C HOLES WERE C SNKS	4/29/72	20630	GE	EG	EG
1	HFTA-10K		B	A HOLES WERE 9/64, 1/4 WAS 13/32	1/6/76	21340	WB	QA	QA
			C	4 A HOLES DEL. 4 F HOLES ADD. D HOLE WAS 875	10/8/76	21468	GDL	K.P.	K.P.



HOLE	DESCRIPTION	REQ'D
A	DELETED	4
B	.625 DIA	1
C	11/64 DIA.	4
D	.937 DIA $\begin{matrix} +.005 \\ -.000 \end{matrix}$	1
E	9/64 DIA	4
F	9/64 x 9/32 SLOT	4

PRESS FIT BB 126-5 FROM OPPOSITE SIDE SHOWN

UNLESS OTHERWISE SPECIFIED DIMENSIONS ARE IN INCHES AND INCLUDE CHEMICALLY APPLIED OR PLATED FINISHES

DECIMALS: .X ± .05, .XX ± .01, .XXX ± .005
 FRACTIONS: 1/64, ANGLES: 0° 30'

MATERIAL 1/8 THK. ALUM 2024-T3

FINISH 5404 YEL IRIDITE

REQ'D	1	ITEM	1	PART NUMBER	BB 126-5	DESCRIPTION	RACE, BEARING	SYMBOL	B
LIST OF MATERIAL									
FINAL APPROVAL					DATE				
MECH. DES.					DATE				
ELECT. DES.					DATE				
CHECKED					DATE				
DRAWN					DATE				
THE TECHNICAL MATERIEL CORPORATION			MAMARONECK, NEW YORK						
FRONT, GEAR PLATE (TUNE ASSY)									
SIZE	A	CODE IDENT. NO.	82679		DWG NO.	PM 1499		ISSUE	D
SCALE: 1/1								SHEET 1 OF 1	

NOTICE TO PERSONS RECEIVING THIS DRAWING: THE TECHNICAL MATERIEL CORPORATION claims proprietary right in the material disclosed hereon. This drawing is issued in confidence for engineering information only and may not be reproduced or used to manufacture anything shown hereon without permission from THE TECHNICAL MATERIEL CORPORATION to the user. This drawing is loaned for mutual assistance and is subject to recall at any time.