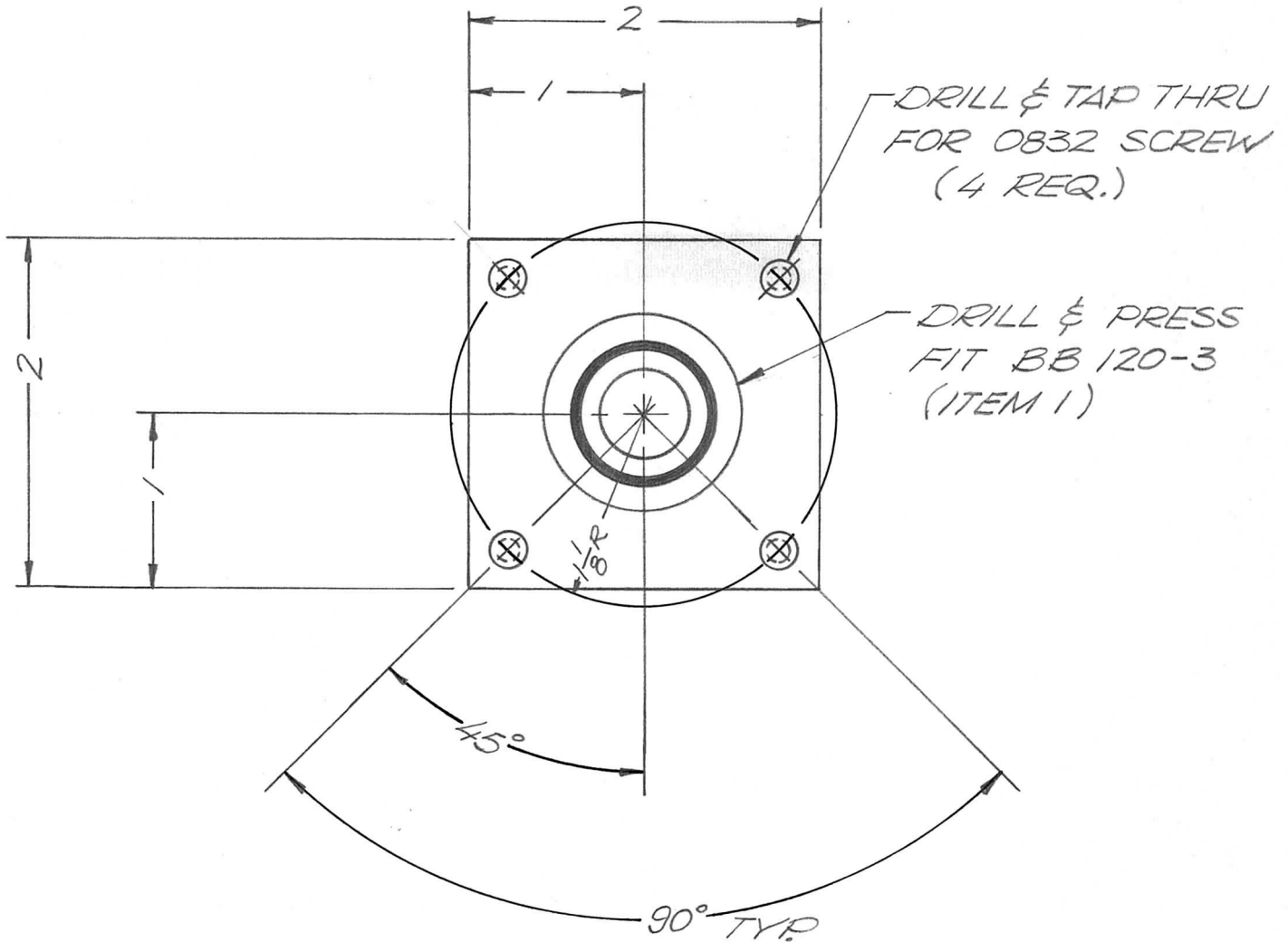


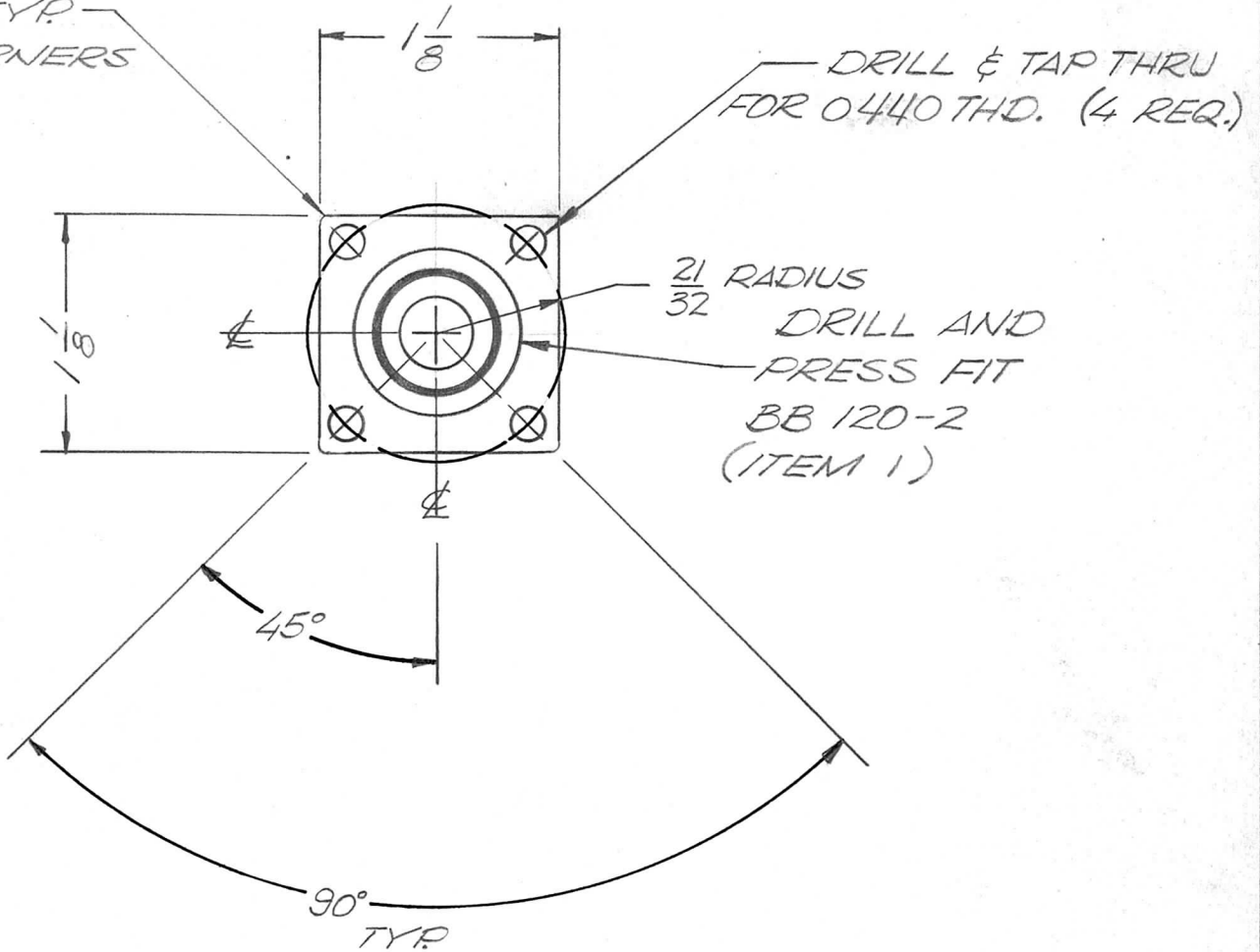
APPLICATION			REVISIONS						
QTY	MODEL USED ON	ASS'Y NO.	LTR	DESCRIPTION	DATE	E.M.N.NO	DRAFT	CHKD	APPD
1	PALFA-10K	48145	Ø	ORIG. REL. FOR PROD	12/24/69		GE	AM	



UNLESS OTHERWISE SPECIFIED DIMENSIONS ARE IN INCHES AND INCLUDE CHEMICALLY APPLIED OR PLATED FINISHES		1	1	BB120-3	BEARING BALL		
DECIMALS .X ± .05 .XX ± .01 .XXX ± .005		FRACTIONS 1/64 ANGLES 0°-30'		TOLS.			
MATERIAL <i>1/4 ALUM.</i>		MECH. DES. <i>ALP. [Signature]</i>		DATE <i>12/24/69</i>		THE TECHNICAL MATERIEL CORP. MAMARONECK, NEW YORK	
FINISH <i>S 404 YEL. IRIDITE</i>		ELECT. DES.		DATE		BEARING PLATE (BANDSWITCH)	
DRAWN <i>EVANGELIST</i>		DATE <i>12/29/69</i>		DATE		DATE	
NOTICE TO PERSONS RECEIVING THIS DRAWING THE TECHNICAL MATERIEL CORPORATION claims proprietary right in the material disclosed hereon. This drawing is issued in confidence for engineering information only and may not be reproduced or used to manufacture anything shown hereon without permission from THE TECHNICAL MATERIEL CORPORATION to the user. This drawing is loaned for mutual assistance and is subject to recall at any time.				SIZE A	CODE IDENT. NO. 82679	DWG NO. <i>PM 1403</i>	ISSUE Ø
SCALE				SHEET		OF	

APPLICATION			REVISIONS						
QTY	MODEL USED ON	ASS'Y NO.	LTR	DESCRIPTION	DATE	E.M.N.NO	DRAFT	CHKD	APPD
1	PALA 10K	AS146	Ø	ORIG. REL. FOR PROD.	12/29/69		GE	WAL	
1	HFTM 1K	AS147	A	1/16 R ALL CORNERS	10/15/70	20018	GE	W	Ref
			B	0440 WAS 0632	2/3/12	20527	A.P.	RJT	SAM

1/16 R TYP.
4 CORNERS



REQ'D	ITEM	PART NUMBER	DESCRIPTION	SYM.
1	1	BB 120-2	BEARING, BALL	

UNLESS OTHERWISE SPECIFIED DIMENSIONS ARE IN INCHES AND INCLUDE CHEMICALLY APPLIED OR PLATED FINISHES

DECIMALS .X ± .05 .XX ± .01 .XXX ± .005	FRACTIONS 1/64 TOLS. ANGLES 0° - 30'
--	---

MATERIAL YAC ALUM.
2024 T4

FINISH SA04 YEL.
1RDITE

FINAL APPROVAL *F. BUDETTI* DATE 12/29/70

MECH. DES. *ALP. WEL* DATE 12/29/69

ELECT. DES. DATE

CHECKED DATE

DRAWN *EVANGELIST* DATE 12/29/69

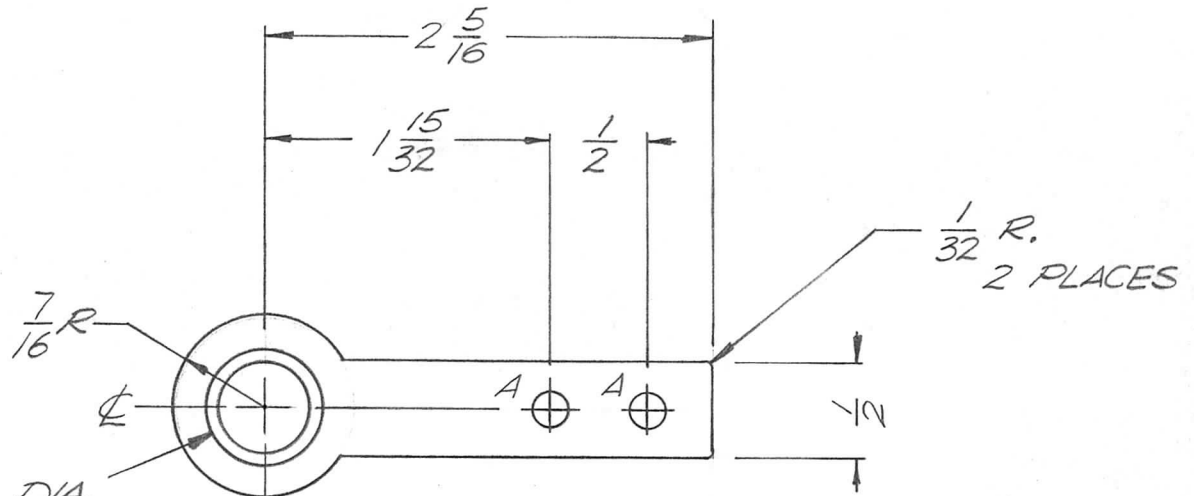
LIST OF MATERIAL

THE TECHNICAL MATERIEL CORP.
MAMARONECK, NEW YORK

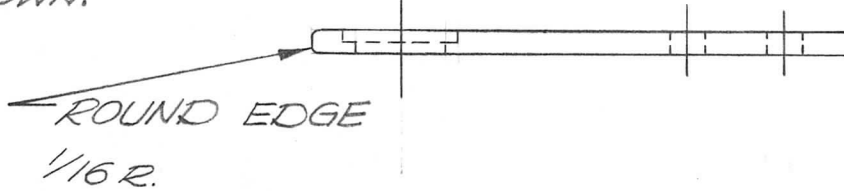
BEARING PLATE B.S.

NOTICE TO PERSONS RECEIVING THIS DRAWING THE TECHNICAL MATERIEL CORPORATION claims proprietary right in the material disclosed hereon. This drawing is issued in confidence for engineering information only and may not be reproduced or used to manufacture anything shown hereon without permission from THE TECHNICAL MATERIEL CORPORATION to the user. This drawing is loaned for mutual assistance and is subject to recall at any time.	SIZE A	CODE IDENT. NO. 82679	DWG NO. PM 1414	ISSUE B
	SCALE	SHEET OF		

APPLICATION			REVISIONS							
QTY	MODEL USED ON	ASS'Y NO.	LTR	DESCRIPTION	DATE	E.M.N.NO	DRAFT	CHKD	APPD	
1	PALA-10K	AS146	Ø	ORIG. REL. FOR PROD	12-29-69		GE	602		



DRILL 13/32 DIA.
HOLE C'BORE 9/16
DIA. HOLE x 1/16 DEEP
AS SHOWN.

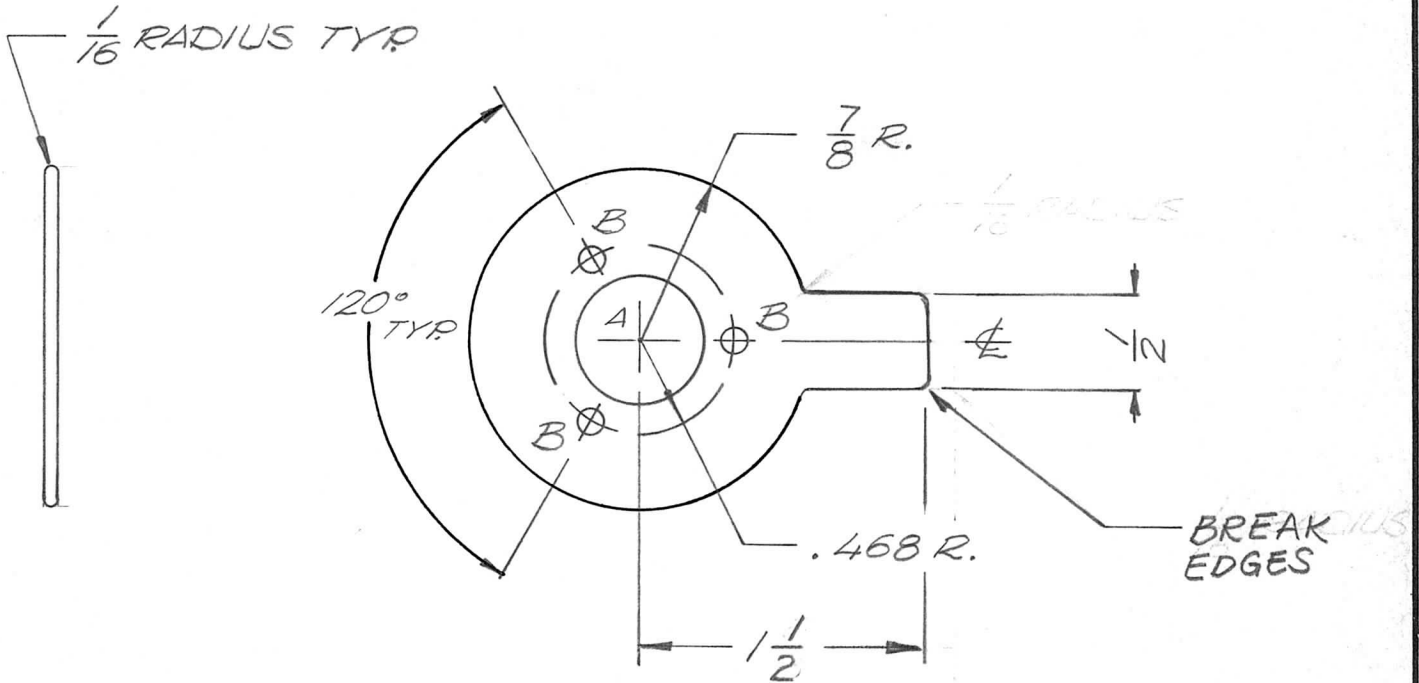


A HOLES 11/64 DIA. 2 REQ.

UNLESS OTHERWISE SPECIFIED DIMENSIONS ARE IN INCHES AND INCLUDE CHEMICALLY APPLIED OR PLATED FINISHES		REQ'D	ITEM	PART NUMBER	DESCRIPTION	SYM.
DECIMALS .X ± .05 .XX ± .01 .XXX ± .005	FRACTIONS 1/64 ANGLES 0° - 30°	LIST OF MATERIAL				
MATERIAL 1/8 ALUM 2024 T3		THE TECHNICAL MATERIEL CORP. MAMARONECK, NEW YORK				
FINISH S404 YEL IRIDITE		WIPER CONTACT				
NOTICE TO PERSONS RECEIVING THIS DRAWING THE TECHNICAL MATERIEL CORPORATION claims proprietary right in the material disclosed hereon. This drawing is issued in confidence for engineering information only and may not be reproduced or used to manufacture anything shown hereon without permission from THE TECHNICAL MATERIEL CORPORATION to the user. This drawing is loaned for mutual assistance and is subject to recall at any time.		FINAL APPROVAL	DATE			
		MECH. DES.	DATE			
		ELECT. DES.	DATE			
		CHECKED	DATE			
		DRAWN	DATE			

SIZE	CODE IDENT. NO.	DWG NO.	ISSUE
A	82679	PM 1415	Ø
SCALE	1:1	SHEET	OF

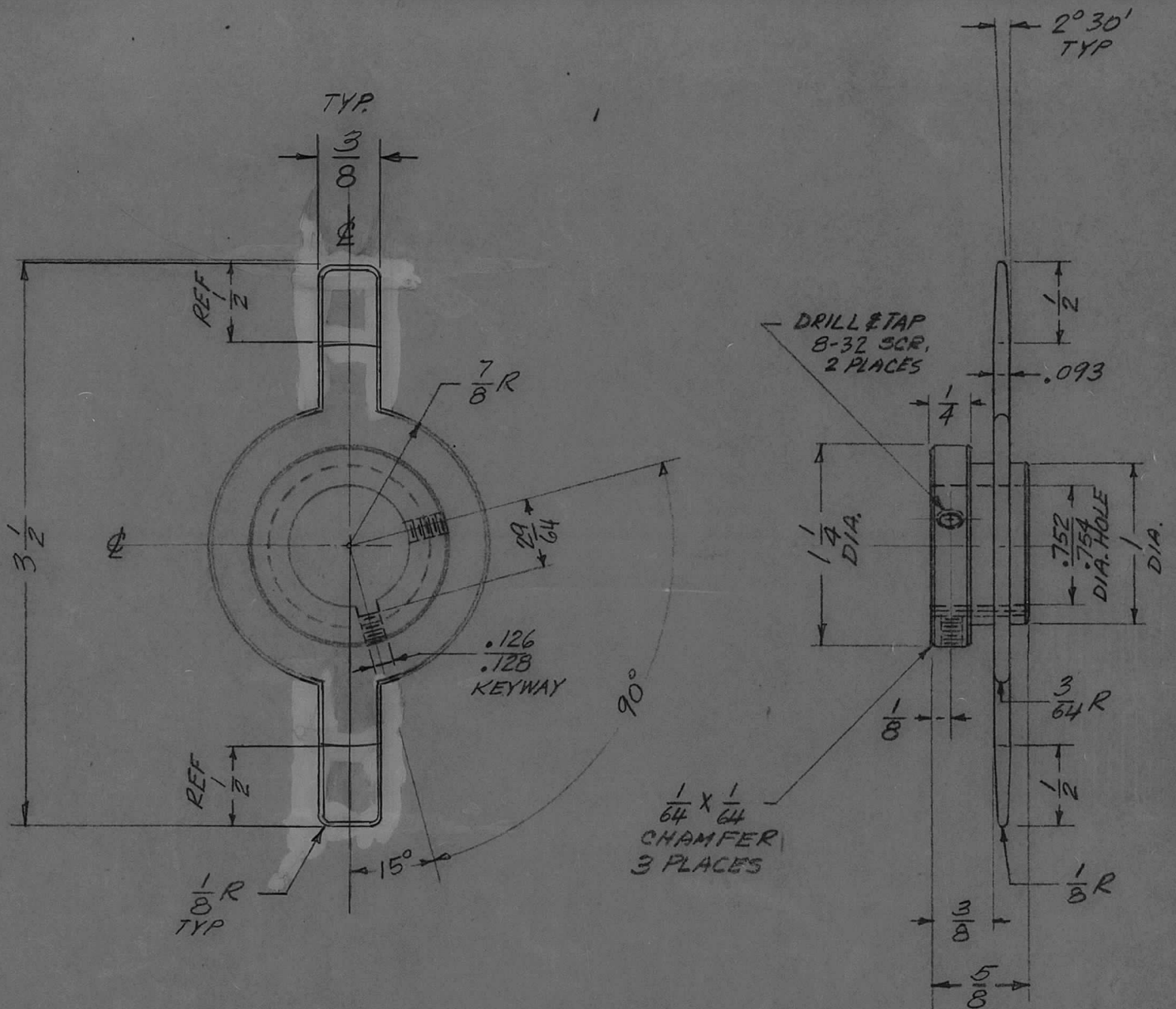
APPLICATION			REVISIONS							
QTY	MODEL USED ON	ASS'Y NO.	LTR	DESCRIPTION	DATE	E.M.N.NO	DRAFT	CHKD	APPD	
1	PALA-10K	AS146	Ø	ORIG. REL. FOR PROD.	12-21-69		GE	ALP		
			A	DIM 1 1/2 WAS 1 5/8 MAT. WAS .081 THK ALUM	5-24-76	21375	GDL	AL	CH	



HOLE A 5/8 DIA. 1 REQ.
HOLE B 1/8 DIA. 3 REQ.

UNLESS OTHERWISE SPECIFIED DIMENSIONS ARE IN INCHES AND INCLUDE CHEMICALLY APPLIED OR PLATED FINISHES		REQ'D	ITEM	PART NUMBER	DESCRIPTION	SYM.
DECIMALS .X ± .05 .XX ± .01 .XXX ± .005 FRACTIONS 1/64 ANGLES 0°-30'		LIST OF MATERIAL				
MATERIAL .081 THK BRASS - HALF HARD		FINAL APPROVAL		DATE	THE TECHNICAL MATERIEL CORP. MAMARONECK, NEW YORK	
FINISH NONE		MECH. DES. ALP.		DATE	ROTOR B.S. DRIVER INS.	
		ELECT. DES.		DATE		
		CHECKED		DATE		
		DRAWN EVANGELIST		DATE 12-29-69		
NOTICE TO PERSONS RECEIVING THIS DRAWING THE TECHNICAL MATERIEL CORPORATION claims proprietary right in the material disclosed hereon. This drawing is issued in confidence for engineering information only and may not be reproduced or used to manufacture anything shown hereon without permission from THE TECHNICAL MATERIEL CORPORATION to the user. This drawing is loaned for mutual assistance and is subject to recall at any time.		SIZE	CODE IDENT. NO.	DWG NO.	ISSUE	
		A	82679	PM 1416	A	
SCALE		SHEET			OF	

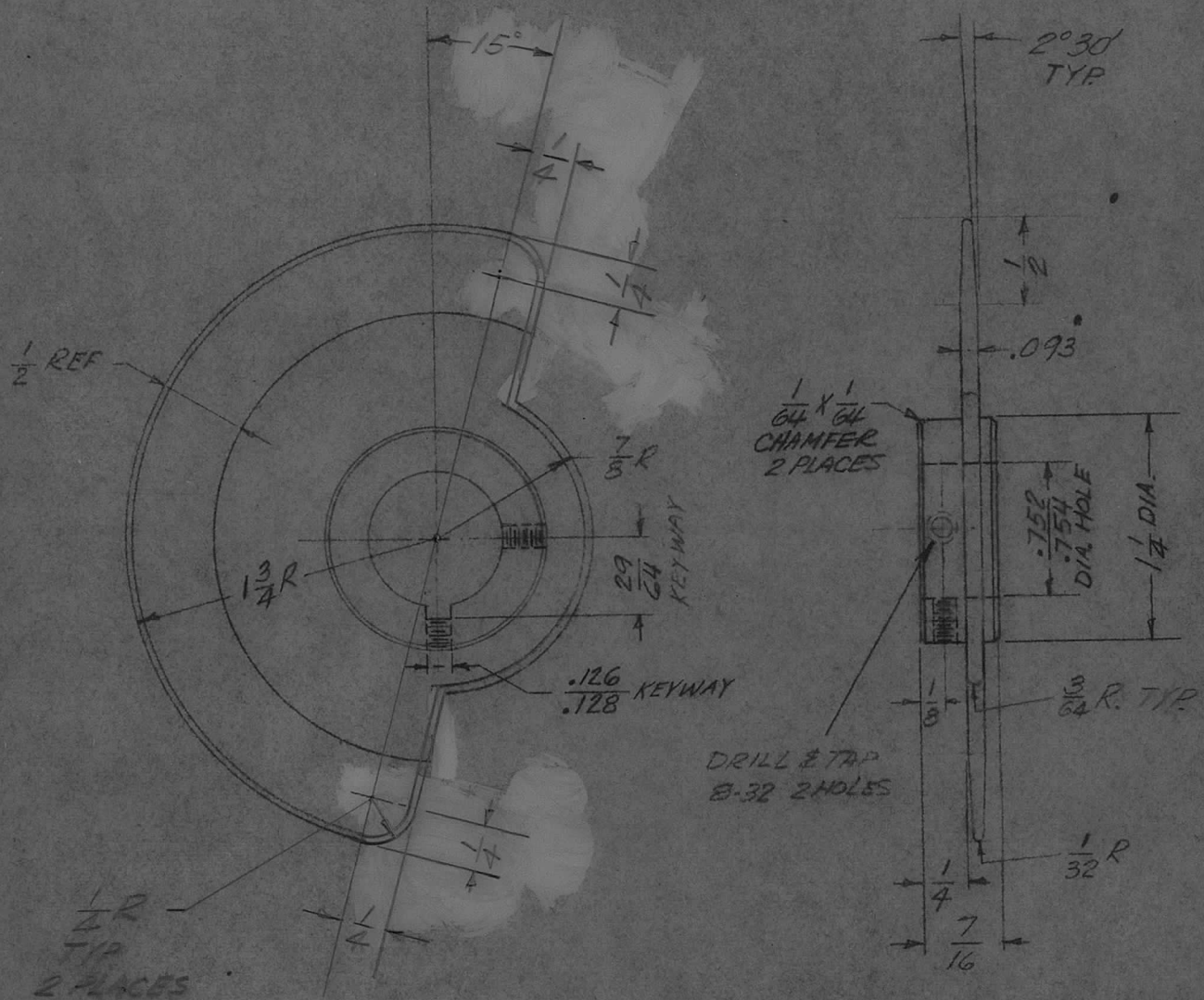
APPLICATION			REVISIONS						
QTY	MODEL USED ON	ASS'Y NO.	LTR	DESCRIPTION	DATE	E.M.N.NO	DRAFT	CHKD	APPD
2	GPTR 10K	AF109	X2	REDESIGNED	10/10/69				J.A.
			0	ORIGINAL RELEASE	5/3/73		C.S.		



UNLESS OTHERWISE SPECIFIED DIMENSIONS ARE IN INCHES AND INCLUDE CHEMICALLY APPLIED OR PLATED FINISHES		REQ'D	ITEM	PART NUMBER	DESCRIPTION	SYM.
LIST OF MATERIAL						
DECIMALS .X ± .05 .XX ± .01 .XXX ± .005		FRACTIONS 1/64 ANGLES 0° 30'		THE TECHNICAL MATERIEL CORP. MAMARONECK, NEW YORK		
MATERIAL 1/2 HARD BRASS		MECH. DES. J. ANGER		ROTOR, SWITCH		
FINISH 3245 SILVER PL. 5433 SILVER KOTE		ELECT. DES.		DATE 9/10/69		
		CHECKED		DATE		
		DRAWN J. ANGER		DATE 9/10/69		

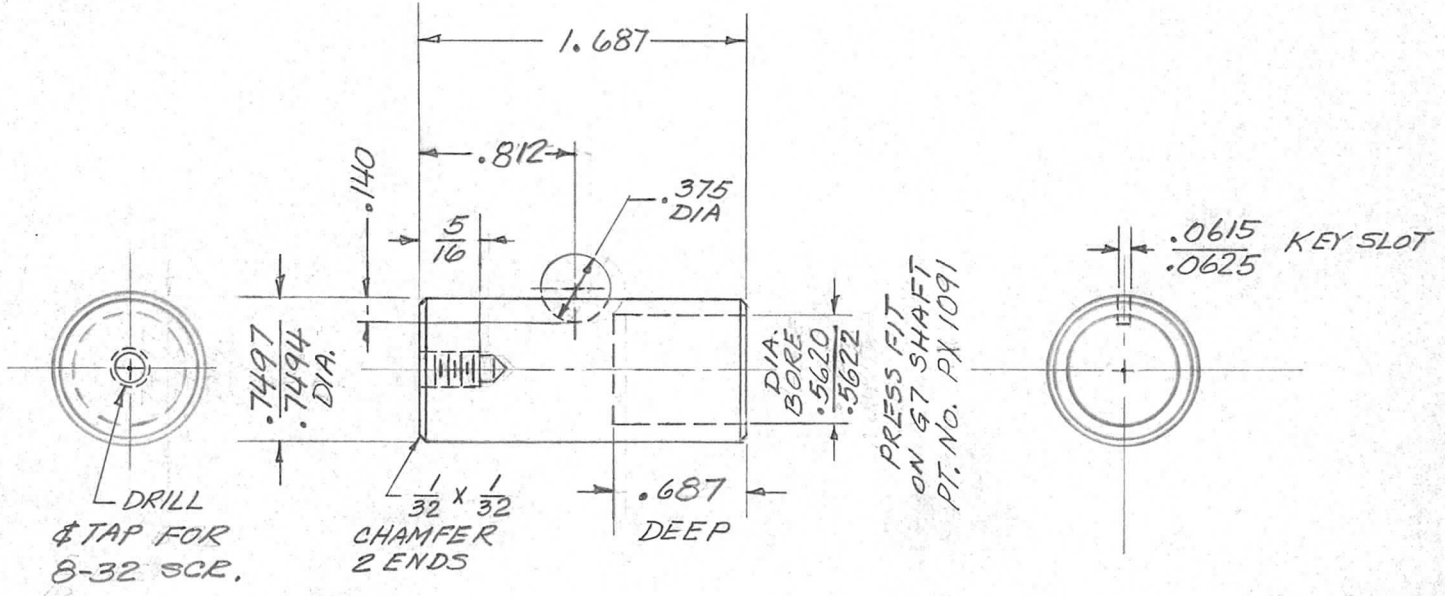
NOTICE TO PERSONS RECEIVING THIS DRAWING				SIZE	CODE IDENT. NO.	DWG NO.	ISSUE
THE TECHNICAL MATERIEL CORPORATION claims proprietary right in the material disclosed hereon. This drawing is issued in confidence for engineering information only and may not be reproduced or used to manufacture anything shown hereon without permission from THE TECHNICAL MATERIEL CORPORATION to the user. This drawing is loaned for mutual assistance and is subject to recall at any time.				A	82679	PM 1420	1
				SCALE 1:1	SHEET OF		

APPLICATION			REVISIONS							
QTY	MODEL USED ON	ASS'Y NO.	LTR	DESCRIPTION	DATE	E.M.N.NO	DRAFT	CHKD	APPD	
3	GPTR10K()	AF109	X	EXPER RELEASE	7-17-69		JA.			
			X	REDESIGNED	10/2/69				J.A.	
			Ø	ORIGINAL RELEASE	5/3/73		C.S.			



UNLESS OTHERWISE SPECIFIED DIMENSIONS ARE IN INCHES AND INCLUDE CHEMICALLY APPLIED OR PLATED FINISHES		REQ'D	ITEM	PART NUMBER	DESCRIPTION	SYM.
LIST OF MATERIAL						
DECIMALS: .X \pm .05 .XX \pm .01 .XXX \pm .005 FRACTIONS: 1/64 TOLS. ANGLES: $0^\circ - 30'$		FINAL APPROVAL		DATE		THE TECHNICAL MATERIEL CORP. MAMARONECK, NEW YORK <i>ROTOR, SWITCH</i>
MATERIAL		MECH. DES. <i>J. ANGER</i>		DATE <i>5/27/69</i>		
<i>1/2 HARD BRASS</i>		ELECT. DES. <i>J. ANGER</i>		DATE <i>5/27/69</i>		
FINISH <i>S245 SILV. PLATE</i>		CHECKED		DATE		
<i>S433 SILVER KOTE</i>		DRAWN <i>J. ANGER</i>		DATE <i>5/27/69</i>		
NOTICE TO PERSONS RECEIVING THIS DRAWING THE TECHNICAL MATERIEL CORPORATION claims proprietary right in the material disclosed hereon. This drawing is issued in confidence for engineering information only and may not be reproduced or used to manufacture anything shown hereon without permission from THE TECHNICAL MATERIEL CORPORATION to the user. This drawing is loaned for mutual assistance and is subject to recall at any time.				SIZE	CODE IDENT. NO.	DWG NO.
				A	82679	PM1421
				SCALE <i>1:1</i>	SHEET OF	
						ISSUE <i>Ø</i>

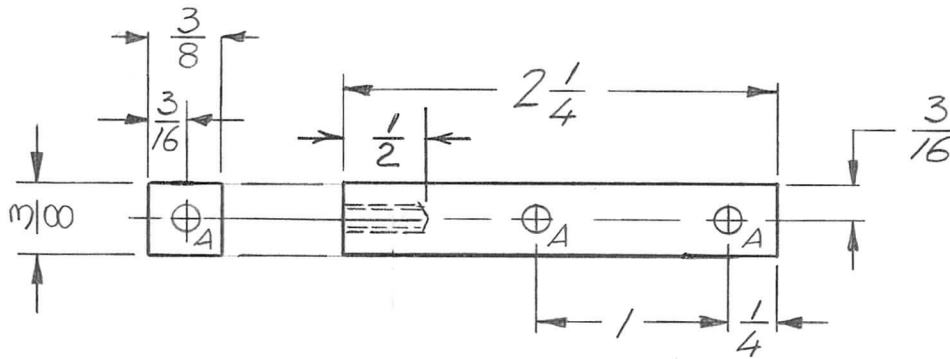
QTY	MODEL USED ON	ASS'Y NO.	LTR	DESCRIPTION	DATE	E.M.N.NO	DRAFT	CHKD	APPD
1	AF109	A4808	X1	REDESIGNED	9/9/69				J.A.
			Ø	ORIGINAL RELEASE	5/3/73		C.S.		



UNLESS OTHERWISE SPECIFIED DIMENSIONS ARE IN INCHES AND INCLUDE CHEMICALLY APPLIED OR PLATED FINISHES		REQ'D	ITEM	PART NUMBER	DESCRIPTION	SYM.
DECIMALS: .X ± .05, .XX ± .01, .XXX ± .005 FRACTIONS: 1/64 TOLS.: ANGLES 0° - 30°		LIST OF MATERIAL				
MATERIAL #303 S. STEEL		FINAL APPROVAL		DATE	THE TECHNICAL MATERIEL CORP. MAMARONECK, NEW YORK <i>HUB, SHAFT</i>	
FINISH PASSIVATE AS PER S104		MECH. DES. <i>J. ANGER</i>		DATE <i>9/9/69</i>		
		ELECT. DES.		DATE		
		CHECKED		DATE		
		DRAWN <i>J. ANGER</i>		DATE <i>9/9/69</i>		

NOTICE TO PERSONS RECEIVING THIS DRAWING THE TECHNICAL MATERIEL CORPORATION claims proprietary right in the material disclosed hereon. This drawing is issued in confidence for engineering information only and may not be reproduced or used to manufacture anything shown hereon without permission from THE TECHNICAL MATERIEL CORPORATION to the user. This drawing is loaned for mutual assistance and is subject to recall at any time.				SIZE A	CODE IDENT. NO. 82679	DWG NO. FPM 1425	ISSUE Ø
SCALE 1" = 1"			SHEET 1 OF 1				

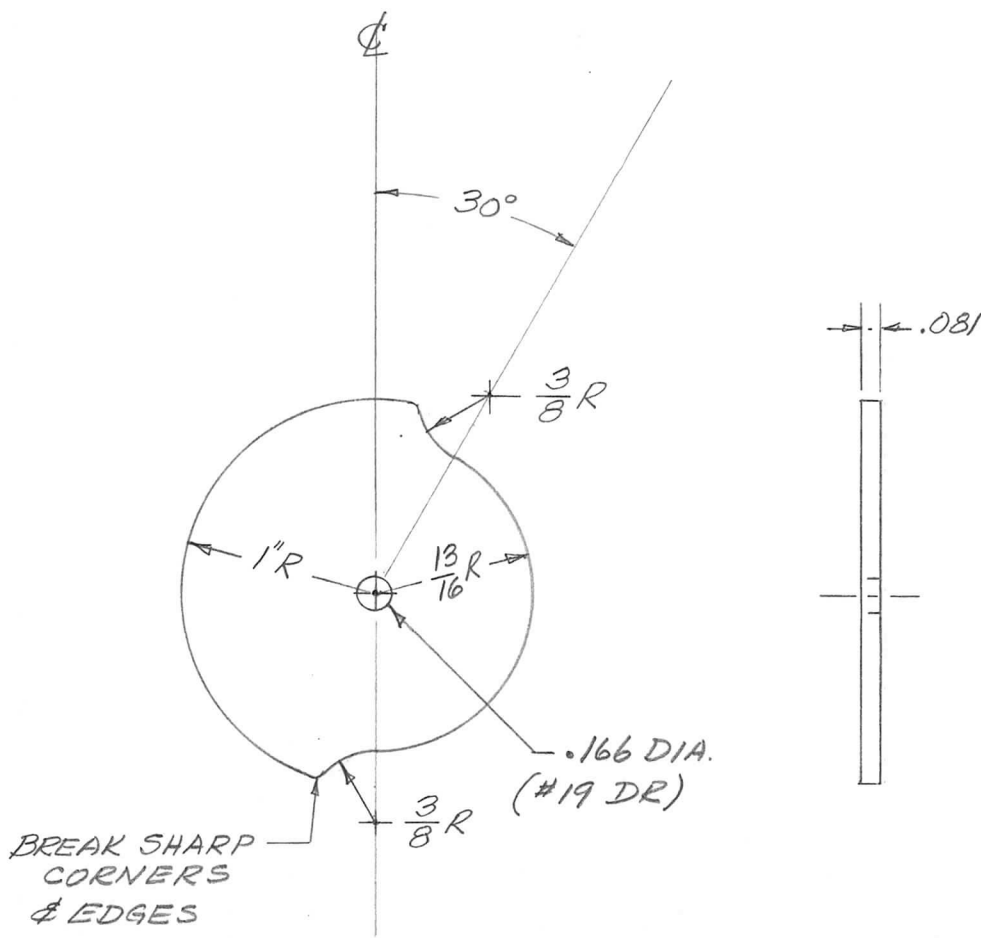
APPLICATION			REVISIONS							
QTY	MODEL USED ON	ASS'Y NO.	LTR	DESCRIPTION	DATE	E.M.N.NO	DRAFT	CHKD	APPD	
2	PALA-10K	AX5082	Ø	ORIG. REL. FOR PROD	9-8-69		GE	<i>[Signature]</i>		



A HOLES DRILL & TAP
0632 - 3 REQ

UNLESS OTHERWISE SPECIFIED DIMENSIONS ARE IN INCHES AND INCLUDE CHEMICALLY APPLIED OR PLATED FINISHES		REQ'D	ITEM	PART NUMBER	DESCRIPTION	SYM.		
DECIMALS: .X ± .05, .XX ± .01, .XXX ± .005 FRACTIONS: 1/64, ANGLES: 0° - 30'		LIST OF MATERIAL						
MATERIAL ALUM.		FINAL APPROVAL <i>[Signature]</i>		DATE 1-6-70	THE TECHNICAL MATERIEL CORP. MAMARONECK, NEW YORK			
FINISH S404 VEL. IRIDITE		MECH. DES. ALP. <i>[Signature]</i>		DATE 12/30/69	BRACKET PC BOARD MT. POWER LEVEL			
		ELECT. DES.		DATE				
		CHECKED		DATE				
		DRAWN G. EVANGELIST		DATE 9-8-69				
NOTICE TO PERSONS RECEIVING THIS DRAWING THE TECHNICAL MATERIEL CORPORATION claims proprietary right in the material disclosed hereon. This drawing is issued in confidence for engineering information only and may not be reproduced or used to manufacture anything shown hereon without permission from THE TECHNICAL MATERIEL CORPORATION to the user. This drawing is loaned for mutual assistance and is subject to recall at any time.					SIZE A	CODE IDENT. NO. 82679	DWG NO. PM 1427	ISSUE Ø
					SCALE 1:1	SHEET OF		

APPLICATION			REVISIONS							
QTY	MODEL USED ON	ASS'Y NO.	LTR	DESCRIPTION	DATE	E.M.N.NO	DRAFT	CHKD	APPD	
1	GPTR10K()	AF109	X,	EXPER. RELEASE	9/24/69					
			Ø	ORIGINAL RELEASE	5/3/73			C.S.		



UNLESS OTHERWISE SPECIFIED DIMENSIONS ARE IN INCHES AND INCLUDE CHEMICALLY APPLIED OR PLATED FINISHES

DECIMALS	FRACTIONS	TOLS.	ANGLES
.X ± .05	1/64		0° - 30'
.XX ± .01			
.XXX ± .005			

MATERIAL .081 ALUM.
5052-H32

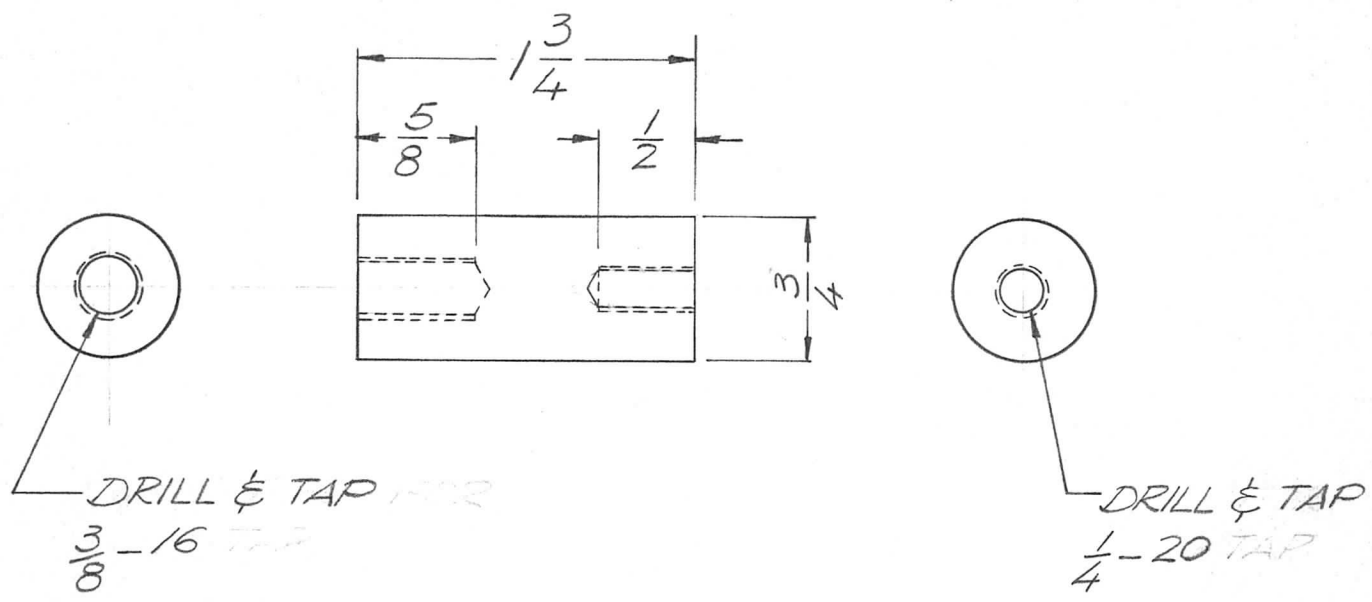
FINISH S 404
YELLOW IRIDITE

REQ'D	ITEM	PART NUMBER	DESCRIPTION	SYM.
LIST OF MATERIAL				
FINAL APPROVAL <i>J.Anger</i>		DATE	THE TECHNICAL MATERIEL CORP. MAMARONECK, NEW YORK <i>CAM, MICRO SWITCH</i>	
MECH. DES. <i>J. ANGER</i>		DATE <i>9/24/69</i>		
ELECT. DES.		DATE		
CHECKED		DATE		
DRAWN <i>J. ANGER</i>		DATE <i>9/24/69</i>		

NOTICE TO PERSONS RECEIVING THIS DRAWING
THE TECHNICAL MATERIEL CORPORATION claims proprietary right in the material disclosed hereon. This drawing is issued in confidence for engineering information only and may not be reproduced or used to manufacture anything shown hereon without permission from **THE TECHNICAL MATERIEL CORPORATION** to the user. This drawing is loaned for mutual assistance and is subject to recall at any time.

SIZE A	CODE IDENT. NO. 82679	DWG NO. PM1428	ISSUE <i>A</i>
SCALE 1:1		SHEET OF	

APPLICATION			REVISIONS							
QTY	MODEL USED ON	ASS'Y NO.	LTR	DESCRIPTION	DATE	E.M.N.NO	DRAFT	CHKD	APPD	
1	PALA-10K	BMA383	Ø	ORIG. RELEASE FOR PROD	10/29/69		GE	BR		
			A	ADD OBSOLETE	4/5/72	20580	GE	ES	ES	



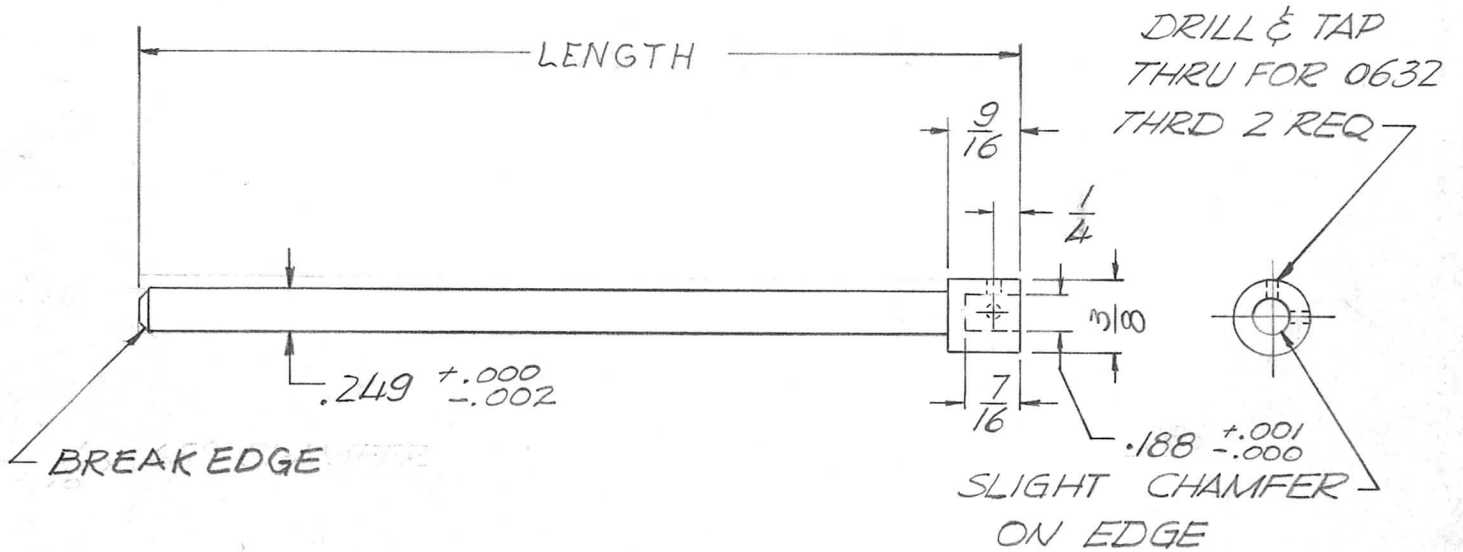
NOTE: REMOVE ALL BURRS
& SHARP EDGES

OBSOLETE

USE FOR PALA-10K & HFLA-10K WITH 8794
FINAL AMP SPARE PARTS ONLY.

UNLESS OTHERWISE SPECIFIED DIMENSIONS ARE IN INCHES AND INCLUDE CHEMICALLY APPLIED OR PLATED FINISHES		REQ'D	ITEM	PART NUMBER	DESCRIPTION	SYM.	
DECIMALS X ± .05 .XX ± .01 .XXX ± .005		BUDETTI		LIST OF MATERIAL			
FRACTIONS 1/64 TOLS. ANGLES 0° - 30'		FINAL APPROVAL	DATE	THE TECHNICAL MATERIEL CORP.			
MATERIAL ALUM.	MECH. DES.	ALP	10/29/69	MAMARONECK, NEW YORK			
FINISH S404 - YEL. IRIDITE	ELECT. DES.			NUT, STANDOFF, SPECIAL			
	CHECKED						
	DRAWN	EVANGELIST	10/29/69				
NOTICE TO PERSONS RECEIVING THIS DRAWING THE TECHNICAL MATERIEL CORPORATION claims proprietary right in the material disclosed hereon. This drawing is issued in confidence for engineering information only and may not be reproduced or used to manufacture anything shown hereon without permission from THE TECHNICAL MATERIEL CORPORATION to the user. This drawing is loaned for mutual assistance and is subject to recall at any time.				SIZE A	CODE IDENT. NO. 82679	DWG NO. PM1431	ISSUE A
				SCALE	SHEET		OF

APPLICATION			REVISIONS							
QTY	MODEL USED ON	ASS'Y NO.	LTR	DESCRIPTION	DATE	E.M.N.NO	DRAFT	CHKD	APPD	
1	PALA-10K	AX5080	∅	ORIGINAL RELEASE FOR PRODUCTION	12/31/69			abc		
1	TLAA-1K	AX5133	A	CHG. DIM. TO P/N#ADD. APPL.	6-15-71	20388	R1	W	P&B	
1	TLAA-1K	AX5132	B	DIM. CHG. ON ENTIRE SHAFT.	6-2-72	20709	GE	EJ	EJ	

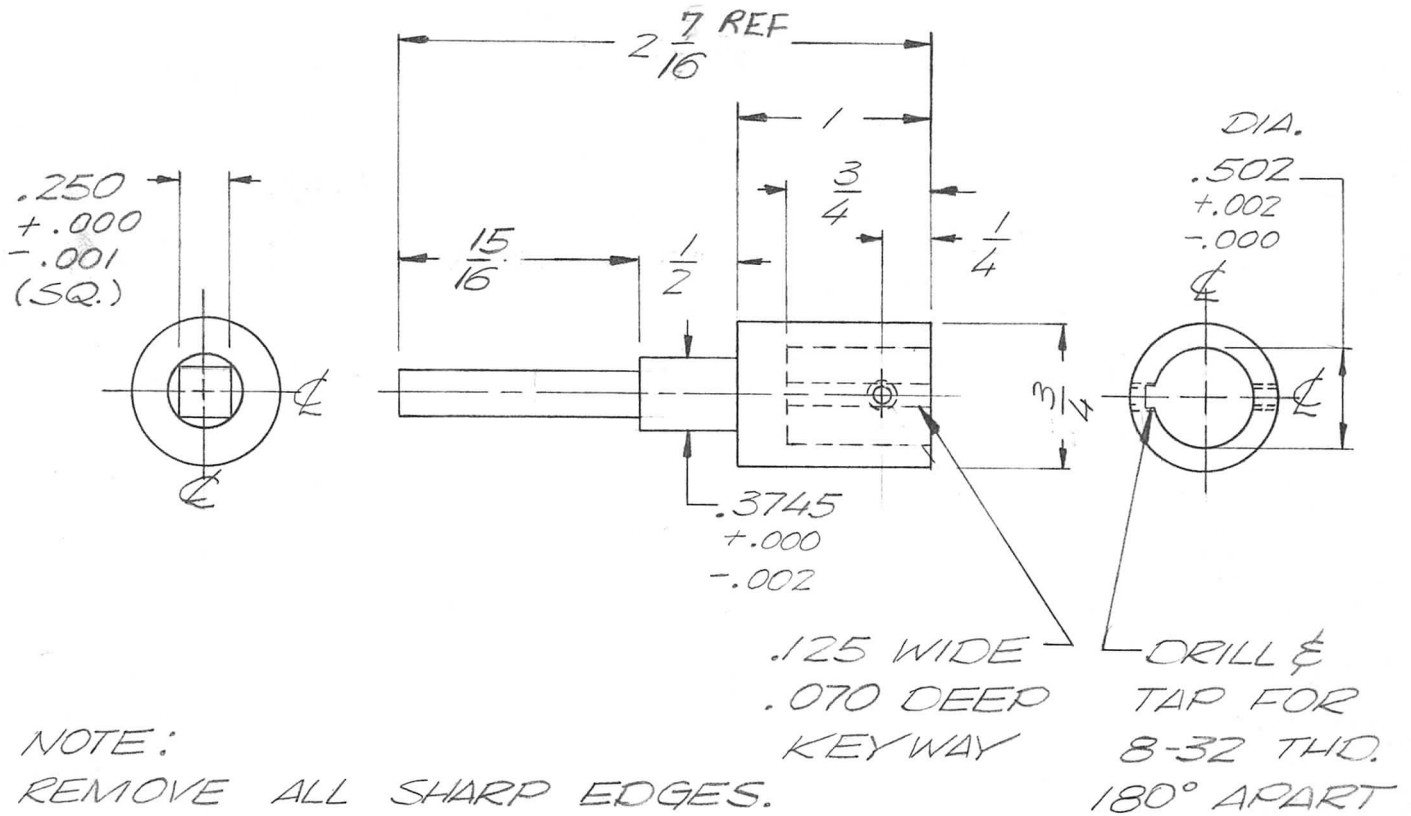


PM1432 - 4.312

BASIC P/N LENGTH

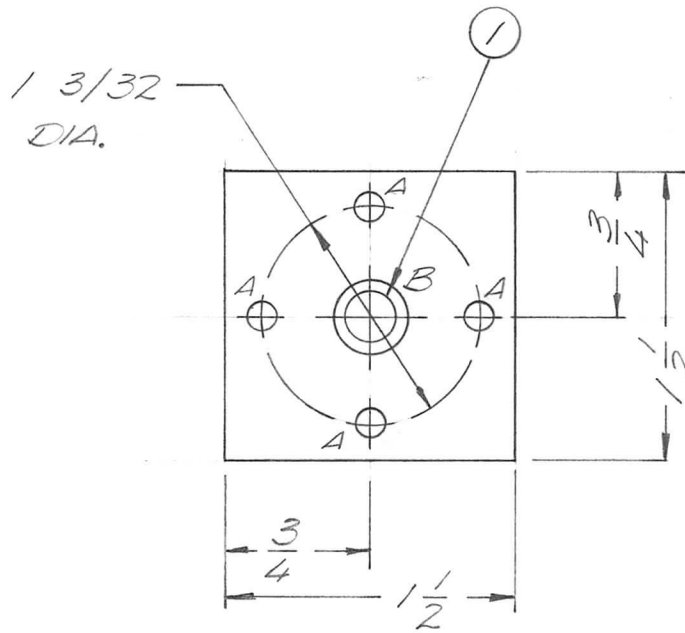
UNLESS OTHERWISE SPECIFIED DIMENSIONS ARE IN INCHES AND INCLUDE CHEMICALLY APPLIED OR PLATED FINISHES	REQ'D	ITEM	PART NUMBER	DESCRIPTION	SYM.	
	F. BUDETTI			LIST OF MATERIAL		
DECIMALS .X ± .05 .XX ± .01 .XXX ± .005	FRACTIONS 1/64 ANGLES 0° - 30'	TOLS.	FINAL APPROVAL	DATE	THE TECHNICAL MATERIEL CORP. MAMARONECK, NEW YORK SHAFT ROTARY	
MATERIAL	MECH. DES.	DATE				
FINISH	ELECT. DES.	DATE				
	CHECKED	DATE				
	DRAWN	DATE				
NOTICE TO PERSONS RECEIVING THIS DRAWING THE TECHNICAL MATERIEL CORPORATION claims proprietary right in the material disclosed hereon. This drawing is issued in confidence for engineering information only and may not be reproduced or used to manufacture anything shown hereon without permission from THE TECHNICAL MATERIEL CORPORATION to the user. This drawing is loaned for mutual assistance and is subject to recall at any time.			SIZE	CODE IDENT. NO.	DWG NO.	ISSUE
			A	82679	PM1432	B
			SCALE	SHEET		OF

APPLICATION			REVISIONS						
QTY	MODEL USED ON	ASS'Y NO.	LTR	DESCRIPTION	DATE	E.M.N.NO	DRAFT	CHKD	APPD
1	HFLA 10 K	AS146	X	EXP RELEASE	5-7-70		GE		
1	HFLA 1 K	AS147	Ø	ORIGINAL RELEASE FOR PRODUCTION	9-14-70		GE		
			A	REMOVE FR. NOTE PM1275	12/28/70	20180	GE	W	P.E.A.



UNLESS OTHERWISE SPECIFIED DIMENSIONS ARE IN INCHES AND INCLUDE CHEMICALLY APPLIED OR PLATED FINISHES		REQ'D	ITEM	PART NUMBER	DESCRIPTION	SYM.	
			F. BUDETTI		LIST OF MATERIAL		
DECIMALS FRACTIONS .X ± .05 1/64 .XX ± .01 TOLS. ANGLES .XXX ± .005 0°-30'		FINAL APPROVAL	DATE	THE TECHNICAL MATERIEL CORP. MAMARONECK, NEW YORK			
MATERIAL BRASS		MECH. DES.	DATE	HLIB, BANDSWITCH			
FINISH S 245 SIL. PLT. S 423 SIL. KTE.		ELECT. DES.	DATE				
H.H., FM		CHECKED	DATE				
		DRAWN	DATE				
NOTICE TO PERSONS RECEIVING THIS DRAWING THE TECHNICAL MATERIEL CORPORATION claims proprietary right in the material disclosed hereon. This drawing is issued in confidence for engineering information only and may not be reproduced or used to manufacture anything shown hereon without permission from THE TECHNICAL MATERIEL CORPORATION to the user. This drawing is loaned for mutual assistance and is subject to recall at any time.				SIZE A	CODE IDENT. NO. 82679	DWG NO. PM 1434	ISSUE A
				SCALE 1:1	SHEET OF		

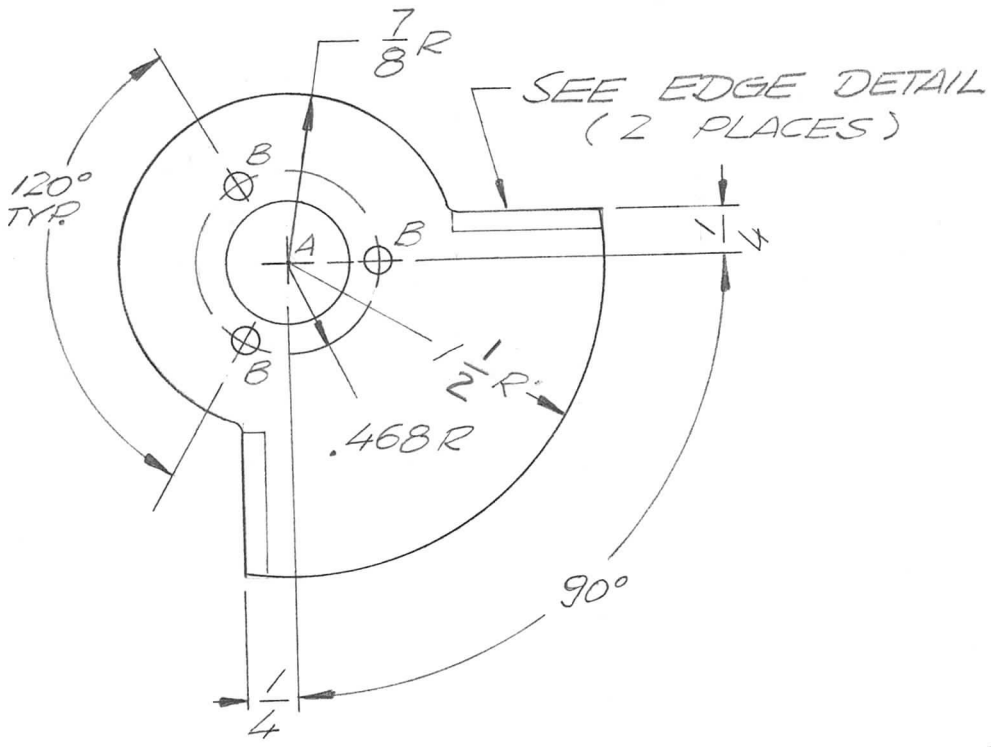
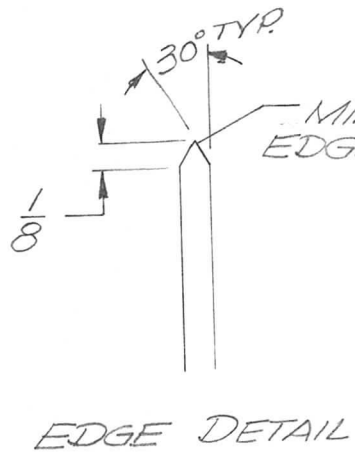
APPLICATION			REVISIONS						
QTY	MODEL USED ON	ASS'Y NO.	LTR	DESCRIPTION	DATE	E.M.N.NO	DRAFT	CHKD	APPD
1	AX5113-2	BMA433-2	X	EXP RELEASE	6/2/70		GE		
			Ø	ORIG RELEASE FOR PROD	6/2/70		CV		



HOLE	DESCRIPTION	QTY.
A	9/64 DIA.	4
B	.3775	1

UNLESS OTHERWISE SPECIFIED DIMENSIONS ARE IN INCHES AND INCLUDE CHEMICALLY APPLIED OR PLATED FINISHES		1	1	BB118-3	BEARING FLANGE TYPE	B
DECIMALS .X ± .05 .XX ± .01 .XXX ± .005	FRACTIONS 1/64 TOLS. ANGLES 0° -30'	REQ'D	ITEM	PART NUMBER	DESCRIPTION	SYM.
F. BUDETTI LIST OF MATERIAL						
MATERIAL 2024 T3 .125 ALUM		FINAL APPROVAL	DATE	THE TECHNICAL MATERIEL CORP. MAMARONECK, NEW YORK		
FINISH S404 YEL. IRIDITE		MECH. DES.	DATE	PLATE, BEARING		
		ELECT. DES.	DATE			
		CHECKED	DATE			
		DRAWN	DATE			
NOTICE TO PERSONS RECEIVING THIS DRAWING THE TECHNICAL MATERIEL CORPORATION claims proprietary right in the material disclosed hereon. This drawing is issued in confidence for engineering information only and may not be reproduced or used to manufacture anything shown hereon without permission from THE TECHNICAL MATERIEL CORPORATION to the user. This drawing is loaned for mutual assistance and is subject to recall at any time.				SIZE A	CODE IDENT. NO. 82679	DWG NO. PM1435
				SCALE 1:1	SHEET OF	
				ISSUE Ø		

APPLICATION		REVISIONS							
Y	MODEL USED ON	ASS'Y NO.	LTR	DESCRIPTION	DATE	E.M.N.NO	DRAFT	CHKD	APPD
	TEAM-1K	AS147	Ø	ORIGINAL RELEASE	9-22-70	—	GE		
			A	DIM 1 1/2 WAS 1 5/8 P MATERIAL WAS .081 THK ALUM.	5-24-76	21372	GDL	A	Ch

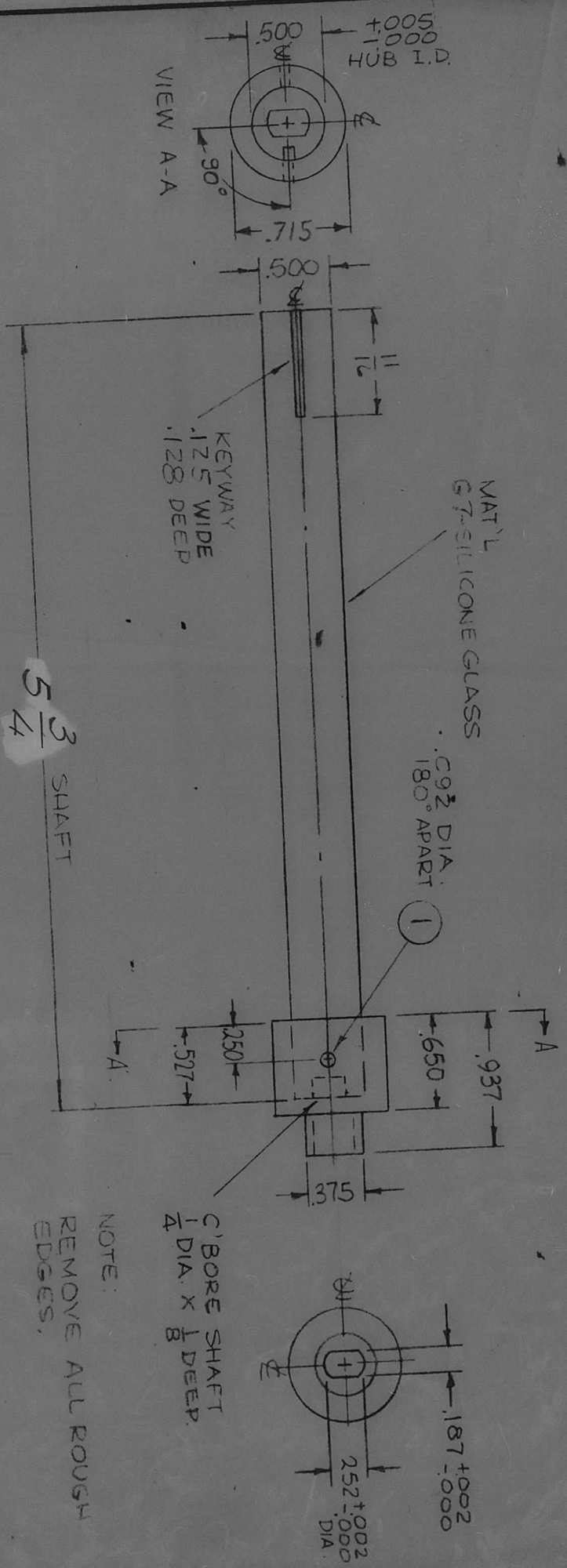


- UNLESS OTHERWISE SPECIFIED:
1. USE MATERIAL THICKNESS FOR MAXIMUM RADIUS ON ALL BENDS.
 2. ALL ANGULAR BENDS 90 DEGREES.
 3. REMOVE ALL BURRS AND SHARP EDGES.
 4. MOUNT INSERTS AFTER FINISHING.

BREAK ALL EDGES
HOLE 'A' - 5/8 DIA. - 1' REQ.
HOLE 'B' - 1/8 DIA. - 3 REQ.

UNLESS OTHERWISE SPECIFIED DIMENSIONS ARE IN INCHES AND INCLUDE CHEMICALLY APPLIED OR PLATED FINISHES		REQ'D	ITEM	PART NUMBER	DESCRIPTION	SYM.
DECIMALS .X ± .05 .XX ± .01 .XXX ± .005		F. BUDETTI				LIST OF MATERIAL
FRACTIONS TOLS. 1/64 ANGLES 0°-30'		FINAL APPROVAL	DATE	THE TECHNICAL MATERIEL CORP. MAMARONECK, NEW YORK		
MATERIAL .081 THK BRASS, HALF HARD		MECH. DES.	DATE	ROTOR B.S.		
FINISH NONE		ELECT. DES.	DATE			
		CHECKED	DATE			
		DRAWN	DATE			
NOTICE TO PERSONS RECEIVING THIS DRAWING THE TECHNICAL MATERIEL CORPORATION claims proprietary right in the material disclosed hereon. This drawing is issued in confidence for engineering information only and may not be reproduced or used to manufacture anything shown hereon without permission from THE TECHNICAL MATERIEL CORPORATION to the user. This drawing is loaned for mutual assistance and is subject to recall at any time.		SIZE	CODE IDENT. NO.	DWG NO.	ISSUE	
		A	82679	PM 1495	A	
SCALE				SHEET	OF	

REQ. PER UNIT	MODEL	USED ON	DATE	PM 1496
1	TLAM-1K	AS 147	10/23/70	



DECIMALS X ± .05 XX ± .01 XXX ± .005	TOLERANCES	DATE	CH. NO.	DRAFTS	CHECKER	ENG. APP.
ORIGINAL RELEASE	UNLESS OTHERWISE SPECIFIED DIMENSIONS ARE IN INCHES AND INCLUDE CHEMICALLY APPLIED OR PLATED FINISHES	09/26/70	C	Q		
DESCRIPTION	SCALE	DATE	CH. NO.	DRAFTS	CHECKER	ENG. APP.
ORIGINAL RELEASE						

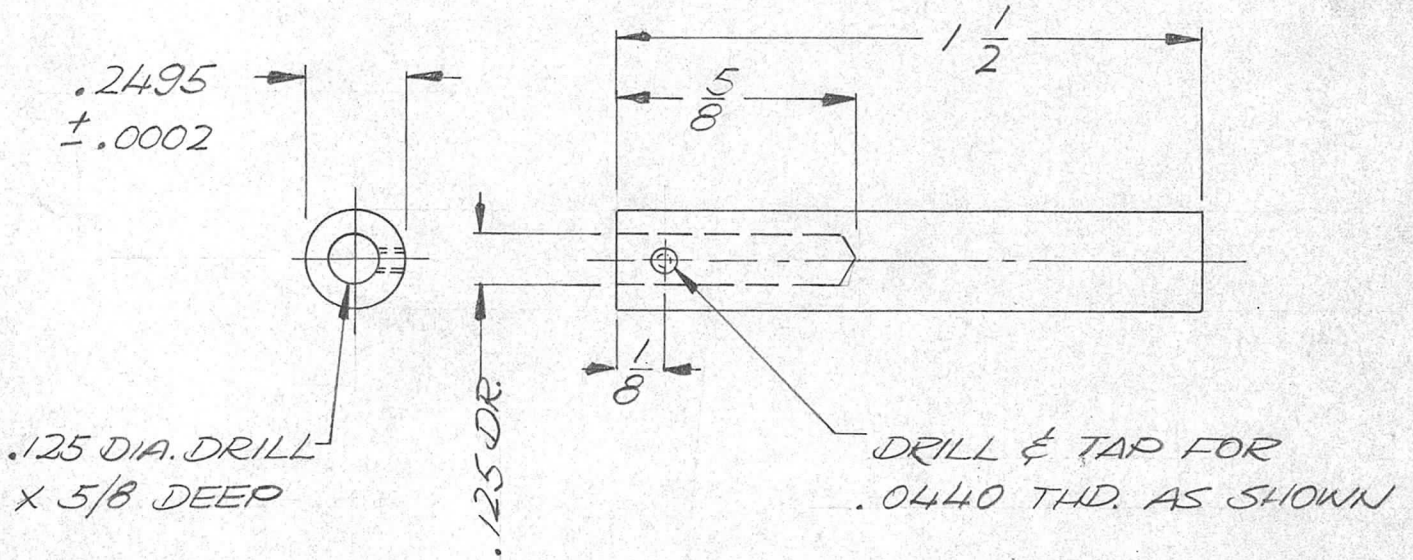
REQ. ITEM	PART NO.	DESCRIPTION	SYMBOL
1	PN 116-M-G-S	PIN, DOWEL	
AS SHOWN		BUDETTI	
STOCK SIZE		THE TECHNICAL MATERIAL CORP.	
STAINLESS STEEL		MAMARONECK	
MATERIAL		HUB & SHAFT, BANDSWITCH	
#303	HEAT TREAT SPEC.		
TYPE & TEMPER	FINISH & SPEC. NO.		
S104-PASSIVATE			
DRAWN	CHECKED		
ALP			
FINAL APPROVAL			
PM 26 Oct 70			
PM 1496			

APPROVAL NO. 440H
23943

APPLICATION

REVISIONS

QTY	MODEL USED ON	ASS'Y NO.	LTR	DESCRIPTION	DATE	E.M.N.NO	DRAFT	CHKD	APPD
1	AX5130	A4890	Ø	ORIG RELEASE FOR PROD	8/10/71		CV		GE



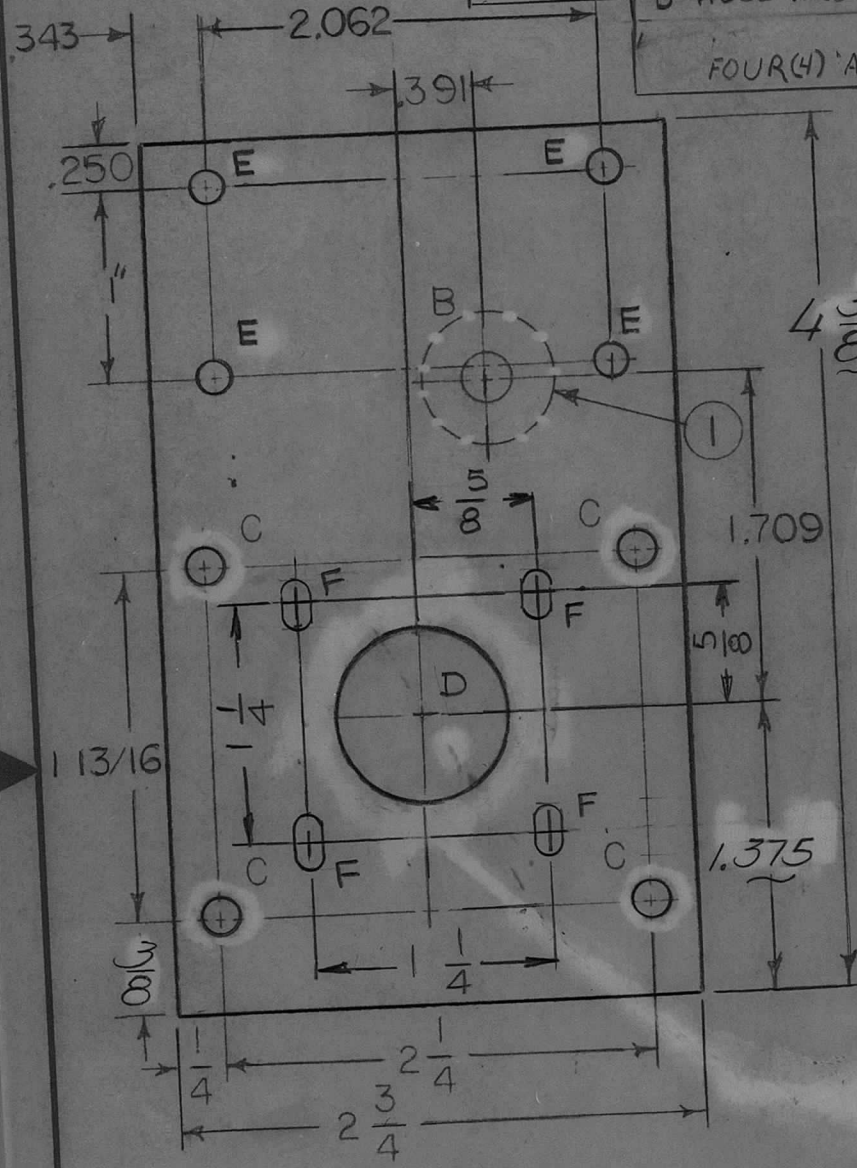
REF. A 4890

UNLESS OTHERWISE SPECIFIED DIMENSIONS ARE IN INCHES AND INCLUDE CHEMICALLY APPLIED OR PLATED FINISHES		REQ'D	ITEM	PART NUMBER	DESCRIPTION	SYM.
DECIMALS: .X ± .05, .XX ± .01, .XXX ± .005 FRACTIONS: 1/64 TOLS.: ANGLES 0°-30'		F. BUDETTI LIST OF MATERIAL THE TECHNICAL MATERIEL CORP. MAMARONECK, NEW YORK SHAFT, MOTOR				
MATERIAL	S. STEEL 303	FINAL APPROVAL	COB	DATE	8/10/71	
FINISH	NATURAL	MECH. DES.	MC	DATE	8/10/71	
		ELECT. DES.		DATE		
		CHECKED		DATE		
		DRAWN	GE	DATE	8/10/71	

NOTICE TO PERSONS RECEIVING THIS DRAWING
 THE TECHNICAL MATERIEL CORPORATION claims proprietary right in the material disclosed hereon. This drawing is issued in confidence for engineering information only and may not be reproduced or used to manufacture anything shown hereon without permission from THE TECHNICAL MATERIEL CORPORATION to the user. This drawing is loaned for mutual assistance and is subject to recall at any time.

SIZE	CODE IDENT. NO.	DWG NO.	ISS
A	82679	DM 1498	
SCALE	2:1	SHEET	OF

APPLICATION			REVISIONS						
QTY	MODEL USED ON	ASS'Y NO.	LTR	DESCRIPTION	DATE	E.M.N.NO	DRAFT	CHKD	APPD
1	TLAA -1K	AX5132	Ø	ORIG RELEASE FOR PROD.	9/9/71		RG		
1	KIT 407		A	C HOLES WERE C SNKS	4/29/72	20630	GE	EG	EG
1	HFTA-10K		B	A HOLES WERE 9/64, 1/4 WAS 13/32	1/6/76	21340	WB	Q	Q
			C	4 A HOLES DEL. 4 F HOLES ADD. D HOLE WAS 875	10/8/76	21468	GDL	K.P.	K.P.



HOLE	DESCRIPTION	REQ'D
A	DELETED	4
B	.625 DIA	1
C	11/64 DIA.	4
D	.937 DIA $\begin{matrix} +.005 \\ -.000 \end{matrix}$	1
E	9/64 DIA	4
F	9/64 x 9/32 SLOT	4

PRESS FIT BB 126-5 FROM OPPOSITE SIDE SHOWN

UNLESS OTHERWISE SPECIFIED DIMENSIONS ARE IN INCHES AND INCLUDE CHEMICALLY APPLIED OR PLATED FINISHES

DECIMALS: .X ± .05, .XX ± .01, .XXX ± .005
 FRACTIONS: 1/64, ANGLES: 0° 30'

MATERIAL 1/8 THK. ALUM 2024-T3

FINISH 5404 YEL IRIDITE

REQ'D	1	ITEM	1	PART NUMBER	BB 126-5	DESCRIPTION	RACE, BEARING	SYMBOL	B
LIST OF MATERIAL									
FINAL APPROVAL					DATE				
MECH. DES.					DATE				
ELECT. DES.					DATE				
CHECKED					DATE				
DRAWN					DATE				
THE TECHNICAL MATERIEL CORPORATION			MAMARONECK, NEW YORK						
FRONT, GEAR PLATE (TUNE ASSY)									
SIZE	A	CODE IDENT. NO.	82679	DWG NO.	PM 1499	ISSUE	D		
SCALE	1/1	SHEET			1	OF		1	

NOTICE TO PERSONS RECEIVING THIS DRAWING: THE TECHNICAL MATERIEL CORPORATION claims proprietary right in the material disclosed hereon. This drawing is issued in confidence for engineering information only and may not be reproduced or used to manufacture anything shown hereon without permission from THE TECHNICAL MATERIEL CORPORATION to the user. This drawing is loaned for mutual assistance and is subject to recall at any time.