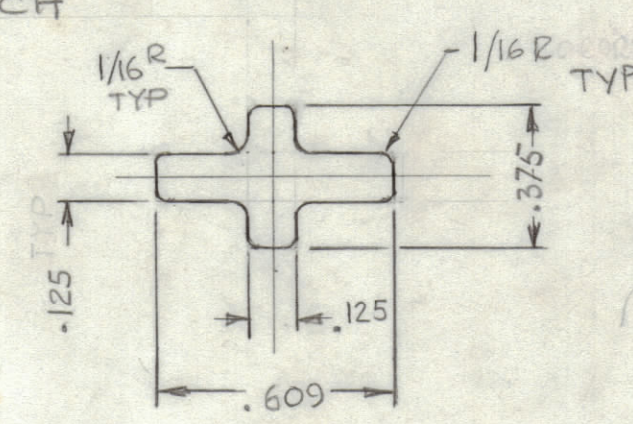
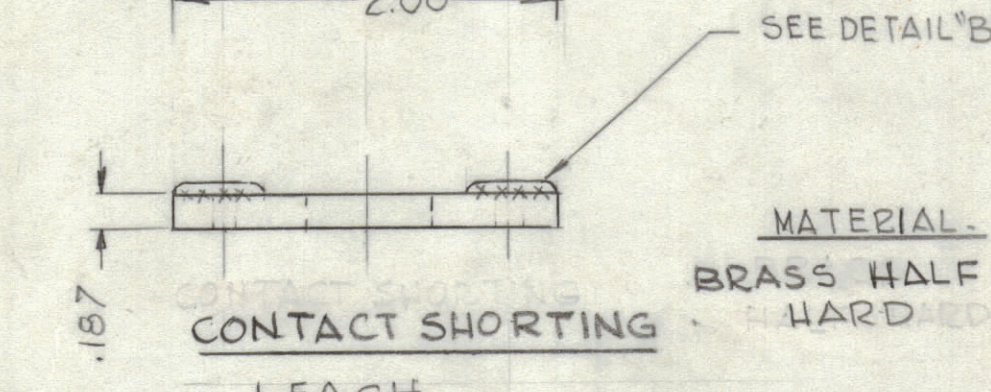
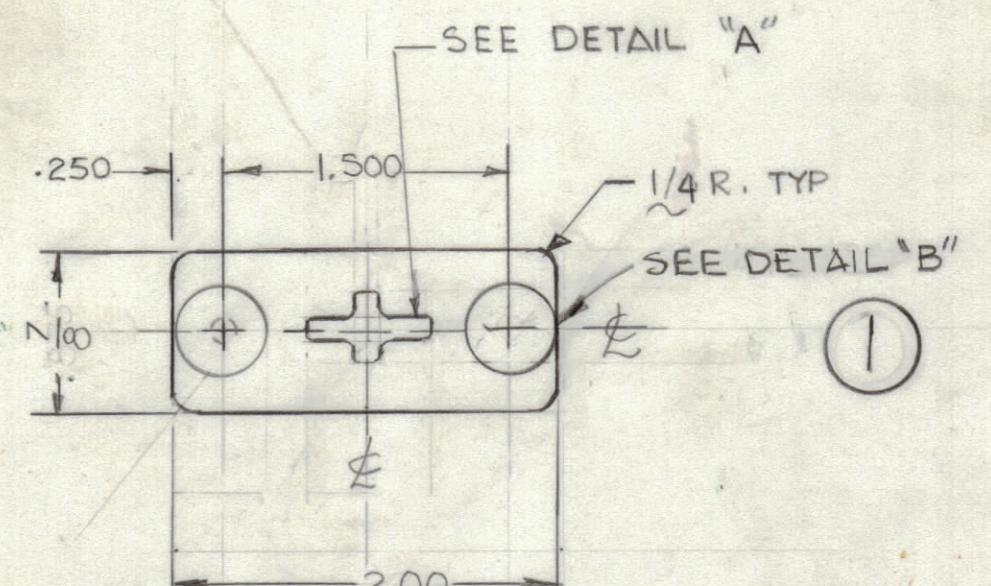
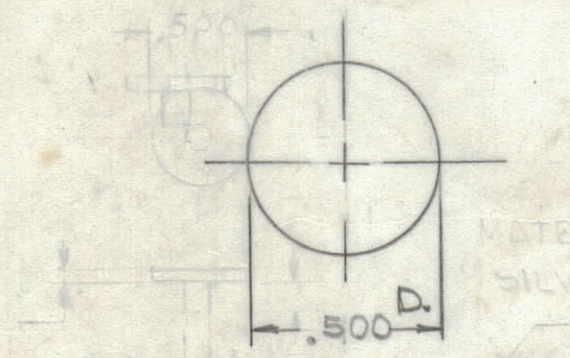


MOVABLE CONTACT ASSY



DETAIL "A"



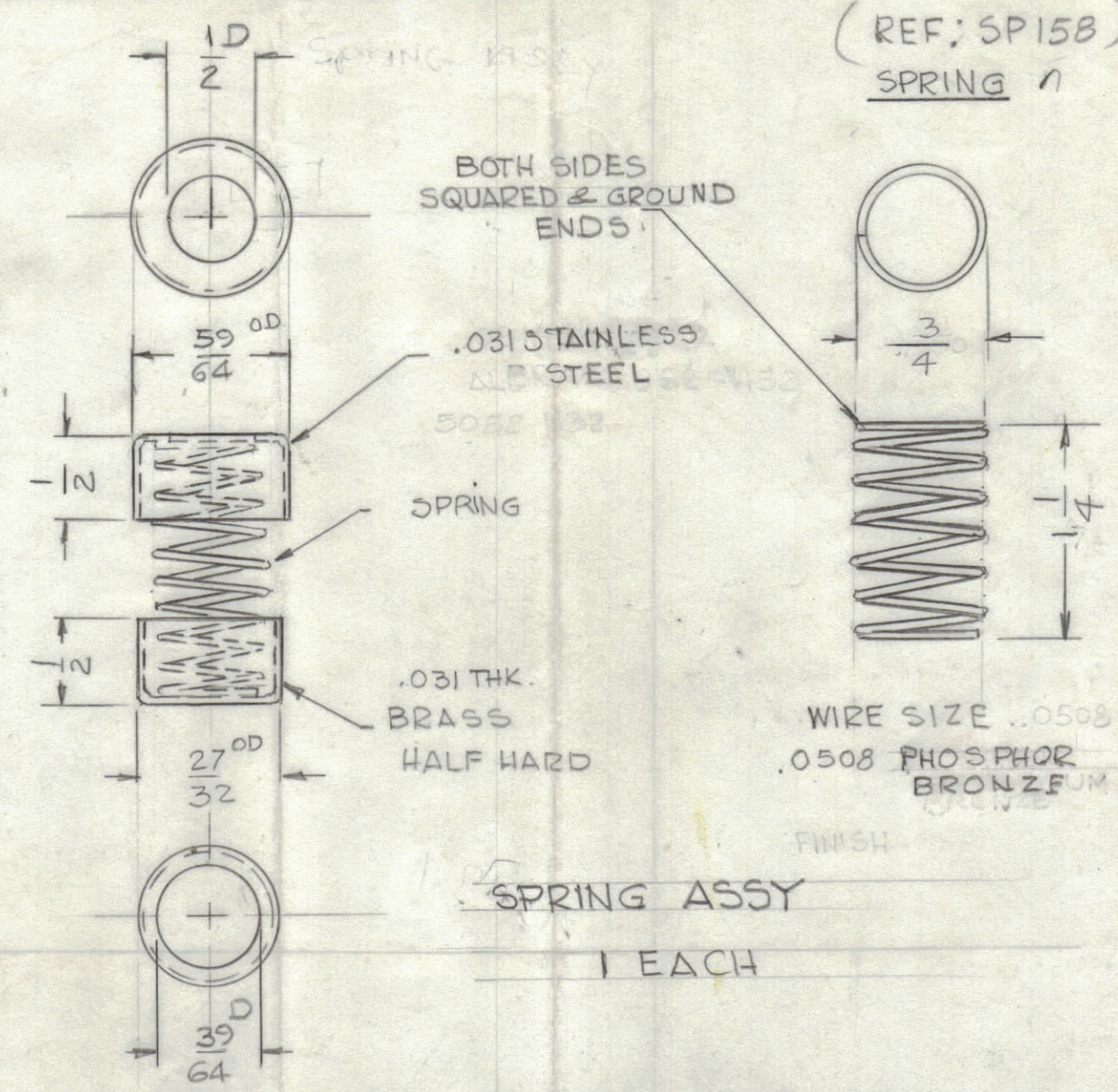
DETAIL "B" (4 REQ'D)

ELECTRICAL CONTACT

MATERIAL: CONTACT SILVER

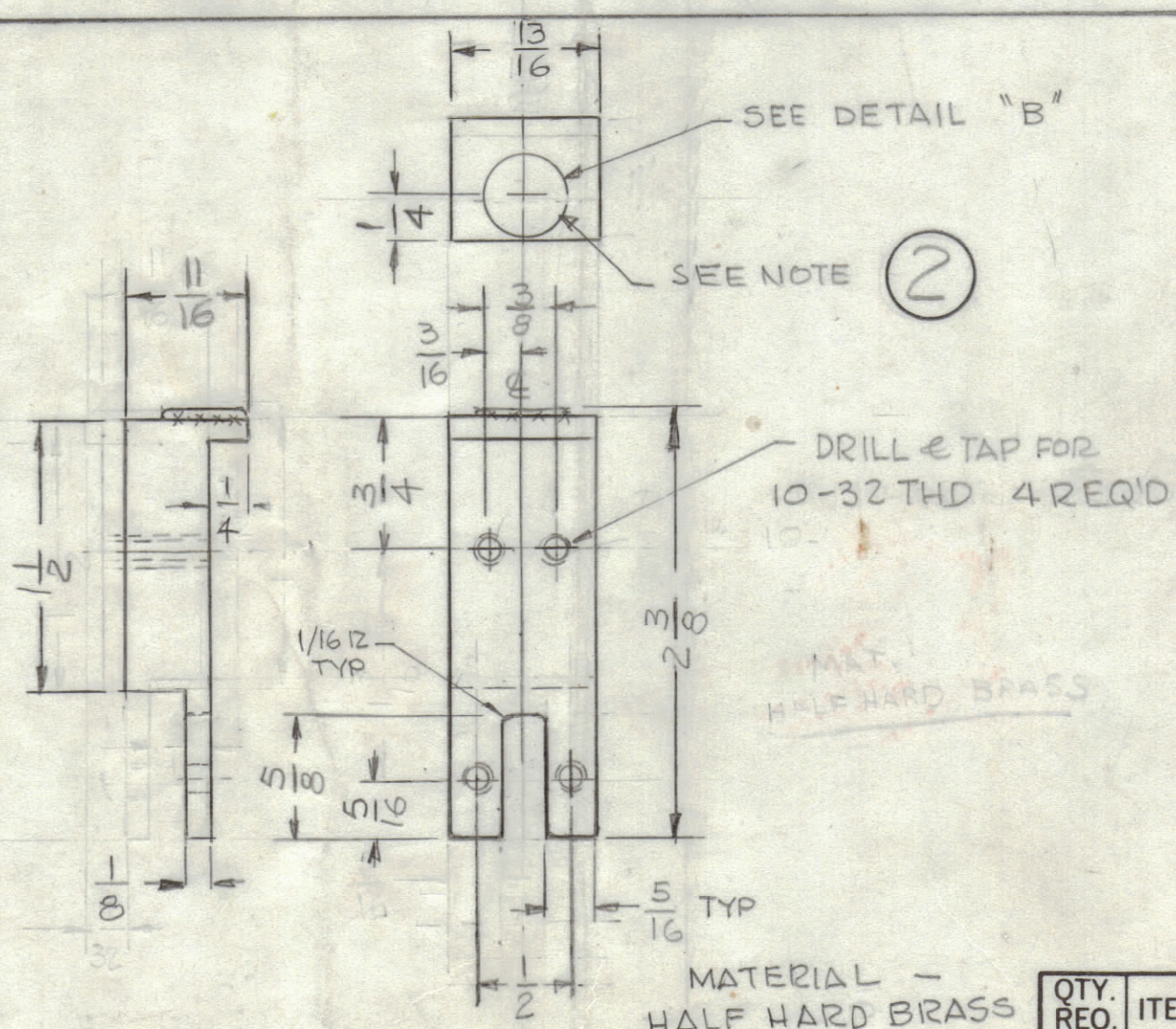
XXX SILVER SOLDER TO ITEMS 1, 2, 3

4 BUTTON CONTACTS REQ'D PER PM1620



SPRING ASSY

1 EACH



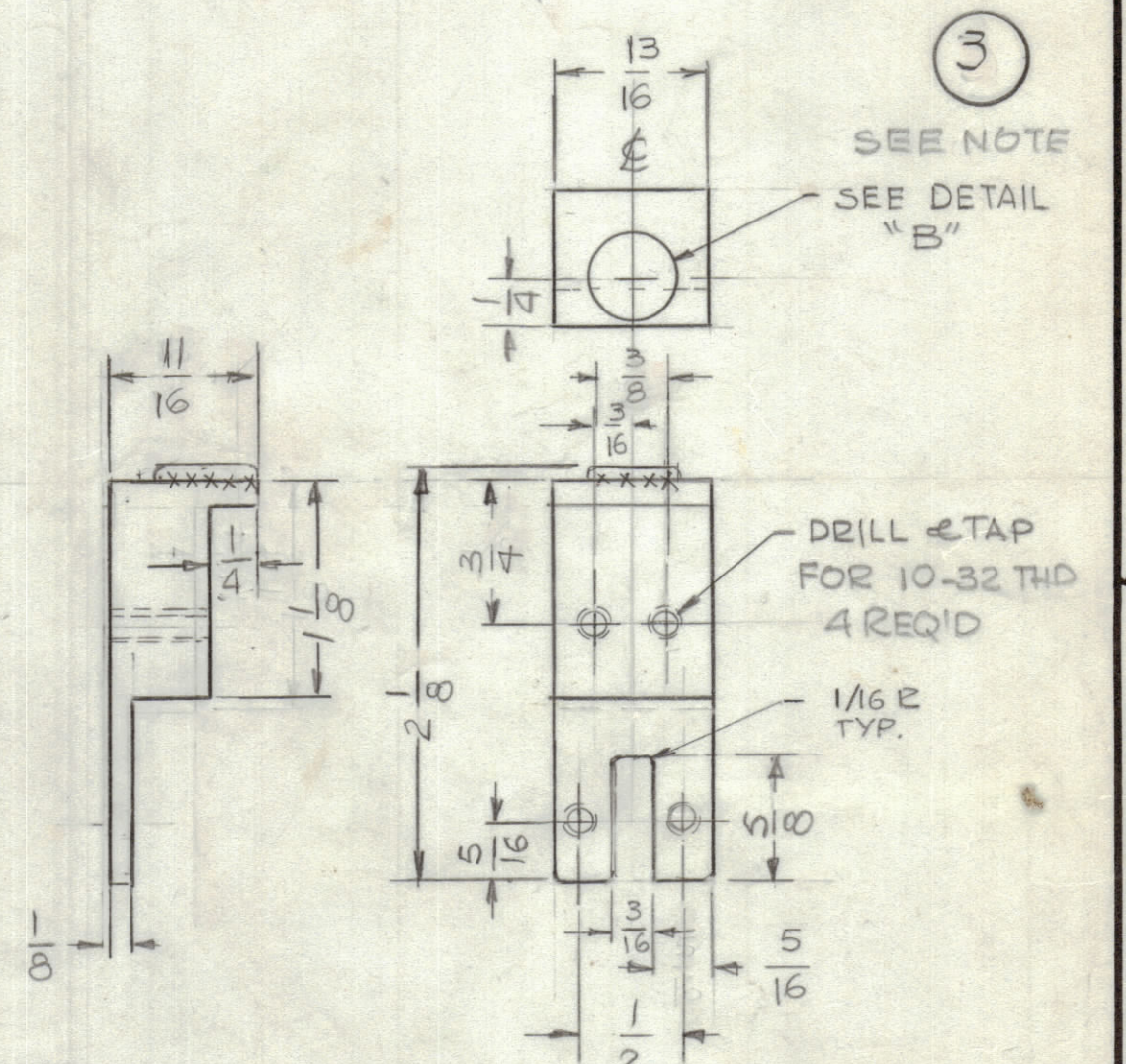
LINE CONTACT

1 EACH

REVISIONS							
ZONE	LTR	DESCRIPTION	DATE	E.M.N.NO	DRAFT	CHKD	APPD
		ORIGINAL RELEASE FOR PROD.	8-15-91		GDL		GB
A		INFORMATION ADD.	3-25-92		GDL		GB

pm1620
CONSIST OF
1 CONTACT SHORTING BAR
1 LINE CONTACT
1 LOAD CONTACT
1 Spring Assy

NOTE:
SILVER SOLDER FOR DETAIL "B" WITH
ITEM 1, 2, 3
FINISH:
SILVER PLATE



LOAD CONTACT

1 EACH

QTY. REQ.	ITEM	PART NO.	DESCRIPTION	SYMBOL
LIST OF MATERIAL				
THE TECHNICAL MATERIEL CORP. MAMARONECK, NEW YORK				
MACHINING FOR P0355				
MATERIAL		SIZE	CODE IDENT. NO.	DWG NO.
FINISH		C	82679	PM1620
TOLERANCES ON		SCALE	1:1	SHEET OF
DECIMALS				
FRACTIONS				
ANGLES				
MATERIAL				
FINISH				

QTY / UNIT	MODEL USED ON	ASS'Y NO.
APPLICATION		
CODE		
PART RL 130		
UNLESS OTHERWISE SPECIFIED DIMENSIONS ARE IN INCHES AND INCLUDE CHEMICALLY APPLIED OR PLATED FINISHES		
TOLERANCES ON		
DECIMALS		
FRACTIONS		
ANGLES		
MATERIAL		
FINISH		
NOTICE TO PERSONS RECEIVING THIS DRAWING		
THE TECHNICAL MATERIEL CORPORATION claims proprietary right in the material disclosed hereon. This drawing is issued in confidence for engineering information only and may not be reproduced or used to manufacture anything shown hereon without permission from THE TECHNICAL MATERIEL CORPORATION to the user. This drawing is loaned for mutual assistance and is subject to recall at any time.		