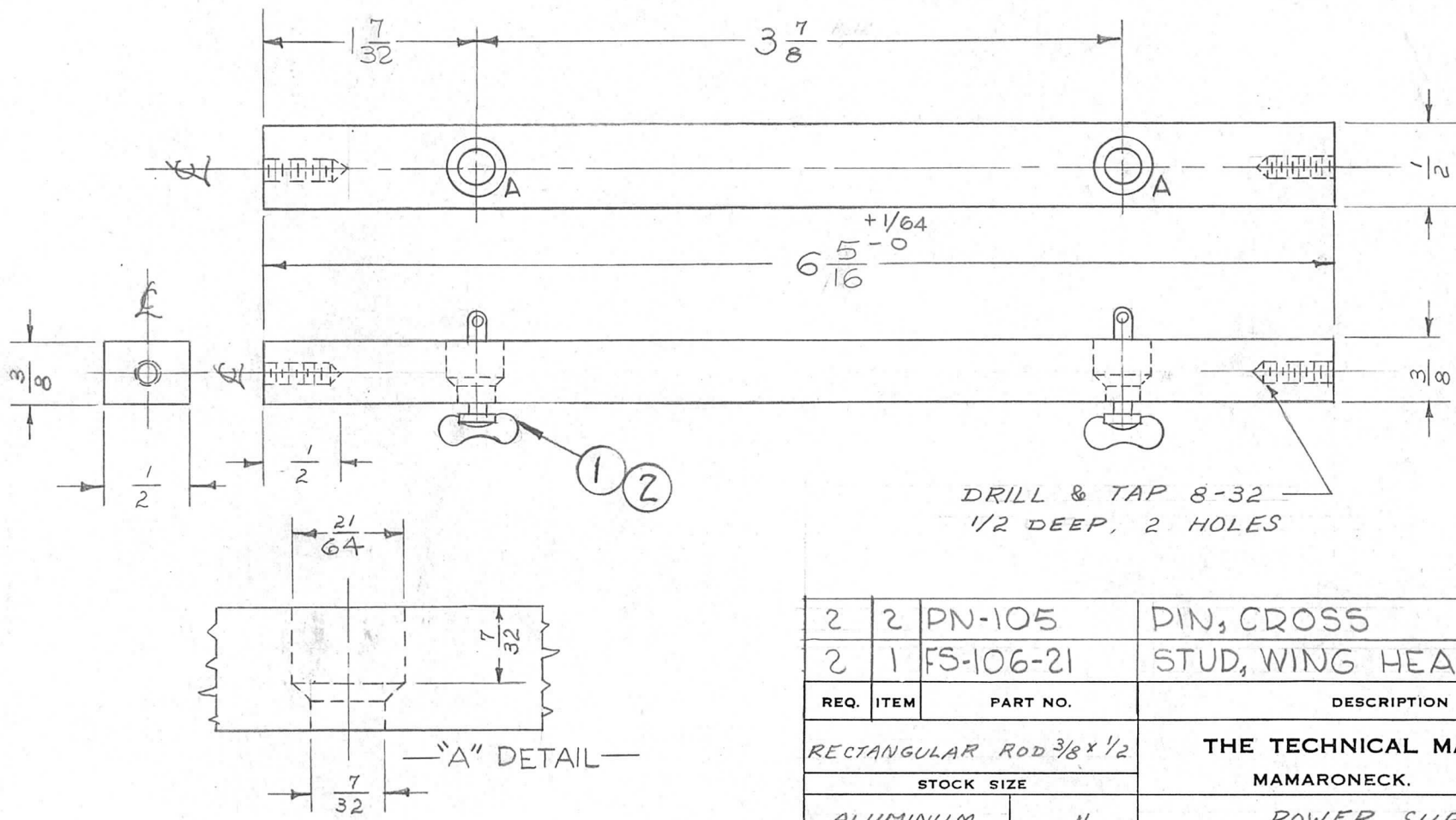


IF IT IS FOUND DESIRABLE TO CHANGE ANY TOLERANCE OR OTHER DETAIL SPECIFIED ON THIS DRAWING NOTIFY THE PURCHASER PROMPTLY.

PM-201C

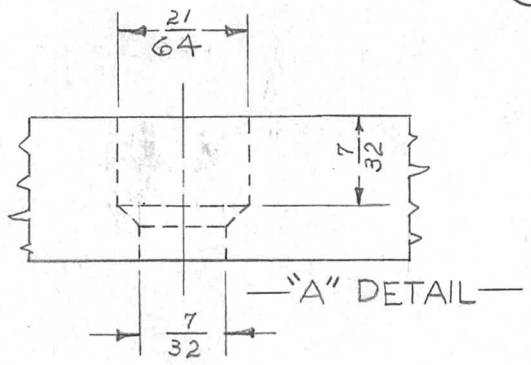
MAXIMUM ALLOWABLE TOLERANCES HAVE BEEN DETERMINED AND DEVIATIONS WILL BE CAUSE FOR REJECTION. REMOVE ALL BURRS AND SHARP EDGES

REQ. PER UNIT	USED ON			
	MODEL	PROJECT NO.	ASS'Y. NO.	DATE
1	VOX	101		1-19-55
1	VOX-1,-2	291		1-19-55



DRILL & TAP 8-32  
1/2 DEEP, 2 HOLES

2	2	PN-105	DIN, CROSS	
2	1	FS-106-21	STUD, WING HEAD	
REQ.	ITEM	PART NO.	DESCRIPTION	SYMBOL
RECTANGULAR ROD 3/8 x 1/2			THE TECHNICAL MATERIEL CORP.	
STOCK SIZE			MAMARONECK. NEW YORK	
ALUMINUM			POWER SUPPLY	
MATERIAL			SUPPORT BAR	
WEIGHT PER PC.				
24S-T4			P.B. 1-19-55	
TYPE & TEMPER			DRAWN	
			ELEC. DES. APP.	
			MECH. DES. APP.	
HEAT TREAT. SPEC.			CHECKED	
S404 YELLOW IRIDITE			FINAL APPROVAL	
FINISH & SPEC. NO.			PM-201 C	



"A" DETAIL

C	1	S404 YEL. IRIDITE WAS S101 CAUSTIC DIP	1/22/64	10786			
ISSUE	ITEM	CHANGED FROM	DATE	CN. NO.	DRAFTS	CHECKER	ENG. APP.

TOLERANCES		SCALE
ALL OTHERS	DEC. DIM. ± FRAC. DIM. ± ANGULAR DIM. ±	DRILL, PUNCH, COMMERCIAL STOCK SIZES AND MANUFACTURERS TOLERANCES ARE NOT INCLUDED.



IF IT IS FOUND DESIRABLE TO CHANGE ANY TOLERANCE OR OTHER DETAIL SPECIFIED ON THIS DRAWING NOTIFY THE PURCHASER PROMPTLY.

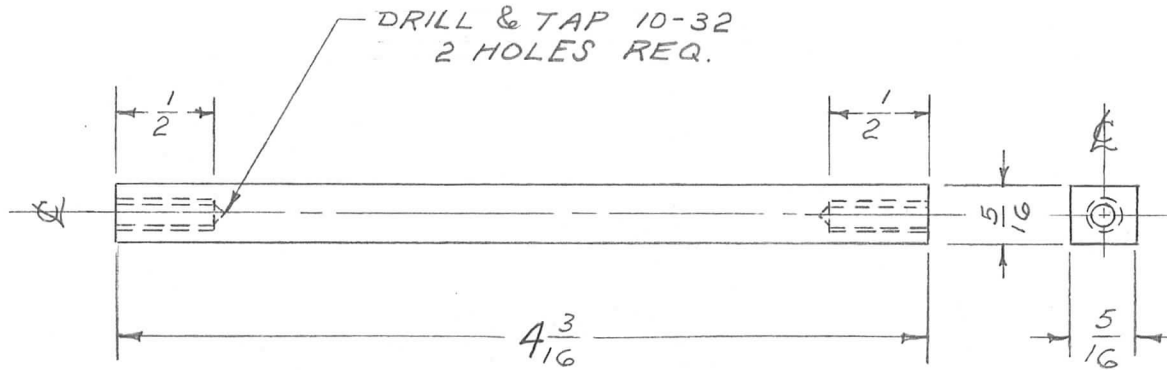
PM-205 A

MAXIMUM ALLOWABLE TOLERANCES HAVE BEEN DETERMINED AND DEVIATIONS WILL BE CAUSE FOR REJECTION. REMOVE ALL BURRS AND SHARP EDGES

REQ. PER UNIT

USED ON

REQ. PER UNIT	MODEL	PROJECT NO.	ASS'Y. NO.	DATE
2	VOX	101		1-24-55
2	VOX-1-2	291		1-24-55



REQ.	ITEM	PART NO.	DESCRIPTION	SYMBOL
		5/16 x 5/16	THE TECHNICAL MATERIEL CORP. MAMARONECK. NEW YORK	
		ALUMINUM	TRANSFORMER SUPPORTS	
		635-T5	VOX	
			P.B. 1-24-55	WJ
			DRAWN	ELEC. DES. APP.
			HEAT TREAT. SPEC.	MECH. DES. APP.
		5404 YEL. IRIDITE	FINAL APPROVAL	WJ
			CHECKED	PM-205 A

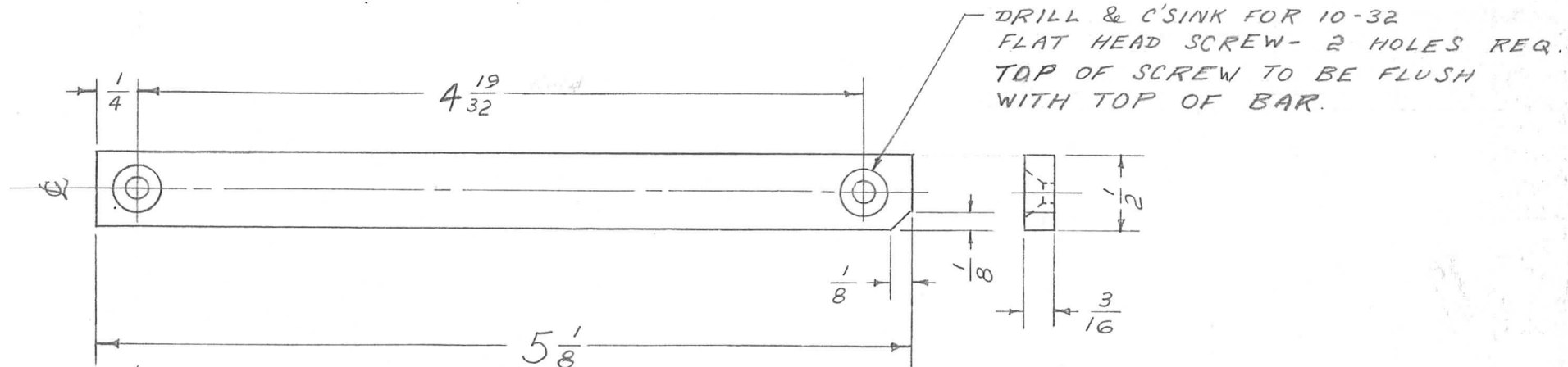
ISSUE	ITEM	CHANGED FROM	DATE	CN. NO.	DRAFTS	CHECKER	ENG. APP.
A	1	5404 YEL IRIDITE WAS S101 CAUSTIC DIP	1/22/54	10786	DA	WJ	WJ
TOLERANCES			SCALE				
ALL OTHERS	DEC. DIM. ± FRAC. DIM. ± 1/64 ANGULAR DIM. ±		DRILL, PUNCH, COMMERCIAL STOCK SIZES AND MANUFACTURERS TOLERANCES ARE NOT INCLUDED.				

IF IT IS FOUND DESIRABLE TO CHANGE ANY TOLERANCE OR OTHER DETAIL SPECIFIED ON THIS DRAWING NOTIFY THE PURCHASER PROMPTLY.

PM-206 B

MAXIMUM ALLOWABLE TOLERANCES HAVE BEEN DETERMINED AND DEVIATIONS WILL BE CAUSE FOR REJECTION. REMOVE ALL BURRS AND SHARP EDGES

REQ. PER UNIT	USED ON			
	MODEL	PROJECT NO.	ASS'Y. NO.	DATE
1	VOX	101		1-24-55
1	VOX-1-2	291		1-24-55



REQ.	ITEM	PART NO.	DESCRIPTION	SYMBOL
		3/16 x 1/2	THE TECHNICAL MATERIEL CORP. MAMARONECK. NEW YORK	
		STOCK SIZE		
		ALUMINUM	TRANSFORMER, SUPPORT ROD	
		MATERIAL		
		63S-T5		
		TYPE & TEMPER	P.B. 1-24-55	
			DRAWN	ELEC. DES. APP.
		HEAT TREAT. SPEC.	FAV 1-24/55	
		5404 YEL IRIDITE	CHECKED	FINAL APPROVAL
		FINISH & SPEC. NO.		PM-206 B

ISSUE	ITEM	CHANGED FROM	DATE	CN. NO.	DRAFTS	CHECKER	ENG. APP.
B	1	3404 YEL. IRIDITE WAS 3101 CAUSTIC DIP	1/22/59	10786	SW	AD	WFB
-#	-#	REDRAWN NO CHANGE	1-24-55	-#	RR	JAR	WJZ

TOLERANCES		SCALE
ALL OTHERS	DEC. DIM. $\pm$ FRAC. DIM. $\pm$ $\frac{1}{64}$ ANGULAR DIM. $\pm$	DRILL, PUNCH, COMMERCIAL STOCK SIZES AND MANUFACTURERS TOLERANCES ARE NOT INCLUDED.



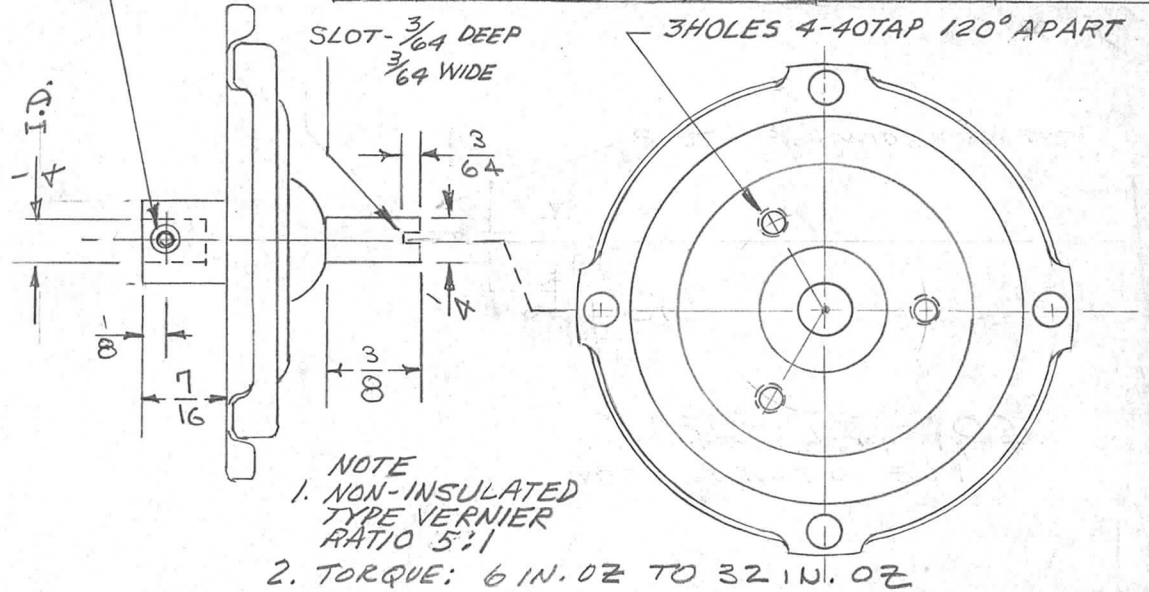
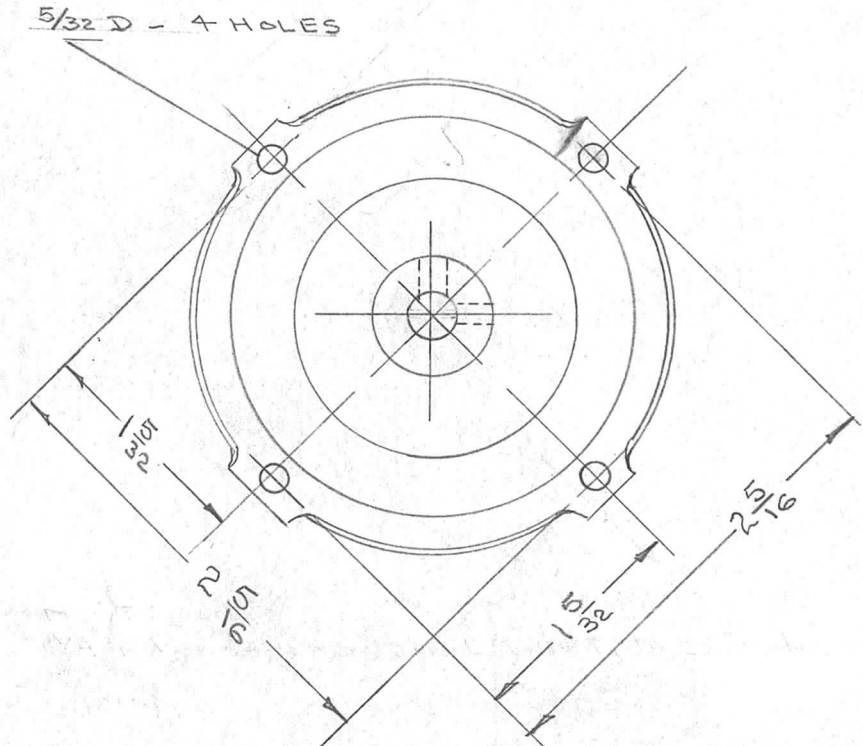
IF IT IS FOUND DESIRABLE TO CHANGE ANY TOLERANCE OR OTHER DETAIL SPECIFIED ON THIS DRAWING NOTIFY THE PURCHASER PROMPTLY.

PM-207 E

MAXIMUM ALLOWABLE TOLERANCES HAVE BEEN DETERMINED AND DEVIATIONS WILL BE CAUSE FOR REJECTION.  
REMOVE ALL BURRS AND SHARP EDGES

REQ. PER UNIT	USED ON			
	MODEL	PROJECT NO.	ASS'Y. NO.	DATE
1	VOX		A-424	10-28-54
1	PMO-1	285		10-28-54
1	PMO-2	285		10-28-54
1	VOX-1	291		1/17/55
1	VOX-2	291		1/17/55
1	RTF			2-1-56
1	RTF-2	M-10		11-5-58

TO BE SUPPLIED BY MFR.  
2 HEADLESS SET SCREWS 6-32 X 3/16 LONG, HEX SOCKET  
TMC EQUIV. AN 565 DGH3 (HEADLESS SET SCREW



REF: NATIONAL CO. AVD VERNIER DRIVE C-19368-4

ISSUE	ITEM	CHANGED FROM	DATE	CN. NO.	DRAFTS	CHECKER	ENG. APP.
E	1	NOTE(2) ADDED	11/6/53	10366	MD	MJT	[Signature]
D	1	END VIEW ADDED	8/24/61	5492	WH	RU	[Signature]
C	1	C-19368-4 ADDED TO REF.	9/6/57	3	EC	[Signature]	[Signature]
B	3	TITLE CLARIFIED					
	2	SET SCREW NOTE ADDED	12/2/56	2	HADE	HADE	[Signature]
A	1	PO-102 REF DELETED	10/27/54	1	EDD	HADE	[Signature]
	—	3/8 WAS 1/2	10/27/54	—	EDD	HADE	[Signature]
—	—	REDRAWN	10/27/54	—	EDD	HADE	[Signature]

REQ.	ITEM	PART NO.	DESCRIPTION	SYMBOL
			THE TECHNICAL MATERIEL CORP.	
			MAMARONECK, NEW YORK	
			AVD VERNIER DRIVE	
			C.I.D.D. 10/28/54	
			DRAWN	MECH. DES. APP.
			ELEC. DES. APP.	
			CHECKED	FINAL APPROVAL
			SUPERCEDES	
			AMS-299	
			PM-207	E

TOLERANCES		SCALE
ALL OTHERS	DEC. DIM. ± FRAC. DIM. ± 1/64 ANGULAR DIM. ±	DRILL, PUNCH, COMMERCIAL STOCK SIZES AND MANUFACTURERS TOLERANCES ARE NOT INCLUDED.

IF IT IS FOUND DESIRABLE TO CHANGE ANY TOLERANCE OR OTHER DETAIL SPECIFIED ON THIS DRAWING NOTIFY THE PURCHASER PROMPTLY.

PM-208 C

MAXIMUM ALLOWABLE TOLERANCES HAVE BEEN DETERMINED AND DEVIATIONS WILL BE CAUSE FOR REJECTION. REMOVE ALL BURRS AND SHARP EDGES

REQ. PER UNIT

USED ON

MODEL

PROJECT NO.

ASS'Y. NO.

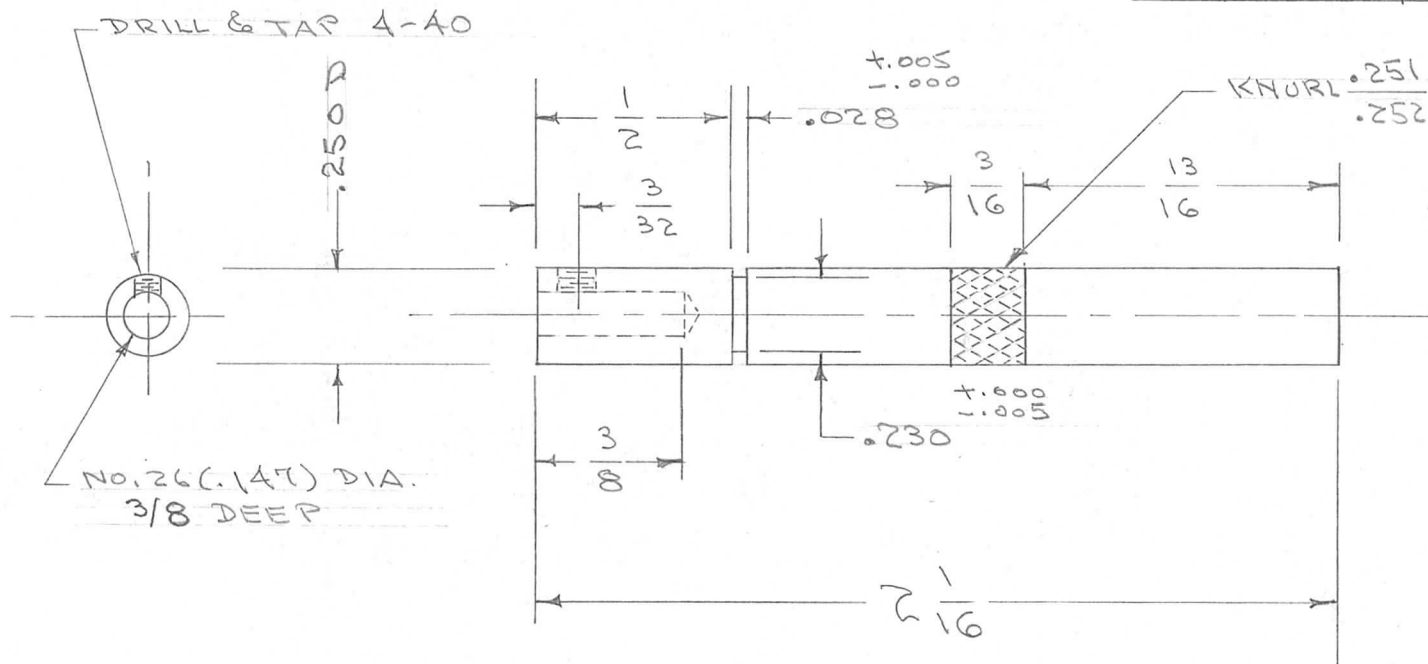
DATE

1

VOX

A-419

8/31/55



NOTE:  
HOLD ON CENTER  
WHEN KNURLING

REQ.	ITEM	PART NO.	DESCRIPTION	SYMBOL
		.250 DIA.	THE TECHNICAL MATERIEL CORP.	
		STOCK SIZE	MAMARONECK, NEW YORK	
	STEEL	—#—	SHAFT, HELICAL GEAR	
	MATERIAL	WEIGHT PER PC.		VOX
	STAINLESS			
	TYPE & TEMPER		CDD 8/31/55	WDE
			DRAWN	ELEC. DES. APP.
			MECH. DES. APP.	
			HEAT TREAT. SPEC.	
	PASSIVATE		CHECKED	FINAL APPROVAL
	FINISH & SPEC. NO.			PM-208 C

#	#	REDRAWN	8/31/55	#	CDD	FADE	WDE
ISSUE	ITEM	CHANGED FROM	DATE	CN. NO.	DRAFTS	CHECKER	ENG. APP.

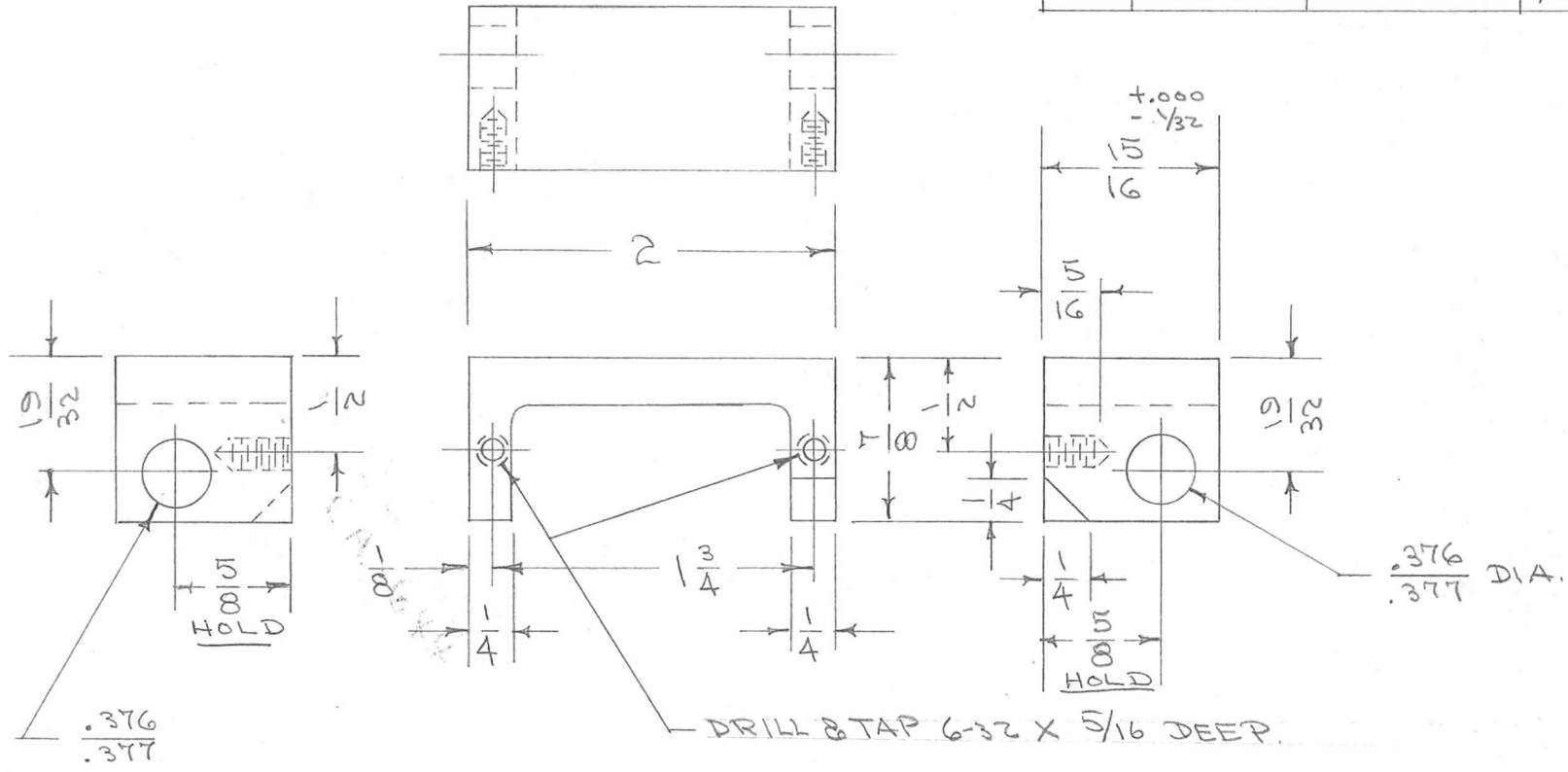
TOLERANCES		SCALE
ALL OTHERS	DEC. DIM. ± FRAC. DIM. ± 1/64 ANGULAR DIM. ±	DRILL, PUNCH, COMMERCIAL STOCK SIZES AND MANUFACTURERS TOLERANCES ARE NOT INCLUDED.

IF IT IS FOUND DESIRABLE TO CHANGE ANY TOLERANCE OR OTHER DETAIL SPECIFIED ON THIS DRAWING NOTIFY THE PURCHASER PROMPTLY.

PM-209 C

MAXIMUM ALLOWABLE TOLERANCES HAVE BEEN DETERMINED AND DEVIATIONS WILL BE CAUSE FOR REJECTION. REMOVE ALL BURRS AND SHARP EDGES

REQ. PER UNIT	USED ON			
	MODEL	PROJECT NO.	ASS'Y. NO.	DATE
1	VOX		A-420	8/31/55



2 HOLES. BOTH HOLES TO BE DRILLED AND REAMED IN LINE AT THE SAME TIME

REQ.	ITEM	PART NO.	DESCRIPTION	SYMBOL
	ALCOA #892 CHANNEL		THE TECHNICAL MATERIEL CORP.	
	STOCK SIZE		MAMARONECK, NEW YORK	
	ALUMINUM	—#—	MOUNTS HELICAL GEAR	
	MATERIAL	WEIGHT PER PC.	VOX	
	EXTRUDED			
	TYPE & TEMPER		CD 8/31/55	
			DRAWN	ELEC. DES. APP. MECH. DES. APP.
	HEAT TREAT. SPEC.		CHECKED	FINAL APPROVAL
	S-101 CAUSTIC DIP			PM-209 C
	FINISH & SPEC. NO.			

#	ISSUE	ITEM	CHANGED FROM	DATE	CN. NO.	DRAFTS	CHECKER	ENG. APP.
			REDRAWN	8/31/55		CD	FAIR	WPC

TOLERANCES	SCALE
ALL OTHERS DEC. DIM. $\pm$ FRAC. DIM. $\pm$ $\frac{1}{64}$ ANGULAR DIM. $\pm$	DRILL, PUNCH, COMMERCIAL STOCK SIZES AND MANUFACTURERS TOLERANCES ARE NOT INCLUDED.

IF IT IS FOUND DESIRABLE TO CHANGE ANY TOLERANCE OR OTHER DETAIL SPECIFIED ON THIS DRAWING NOTIFY THE PURCHASER PROMPTLY.

PM-210

MAXIMUM ALLOWABLE TOLERANCES HAVE BEEN DETERMINED AND DEVIATIONS WILL BE CAUSE FOR REJECTION. REMOVE ALL BURRS AND SHARP EDGES

REQ. PER UNIT

USED ON

MODEL

PROJECT NO.

ASS'Y. NO.

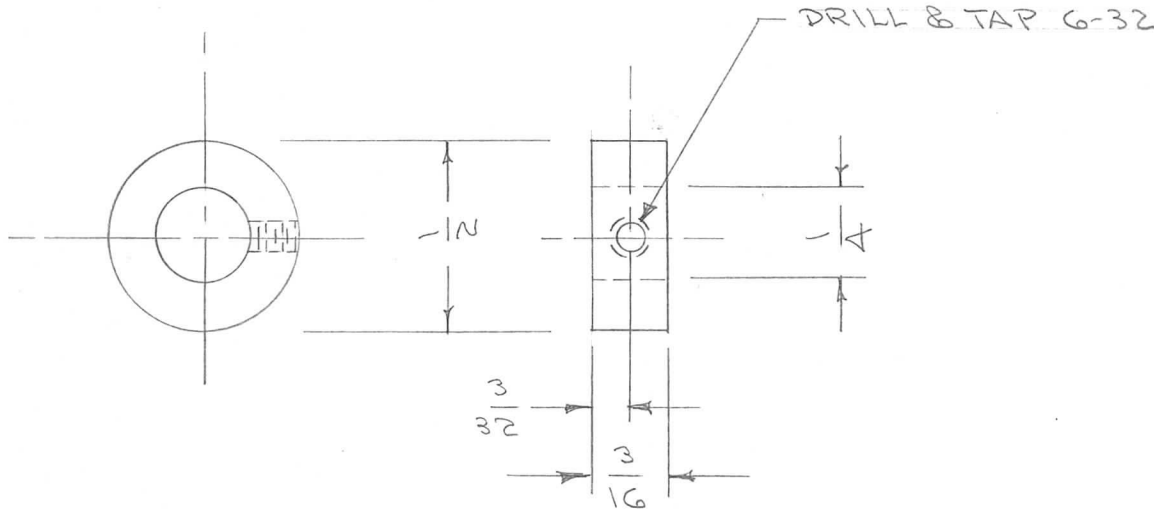
DATE

1

PMO-VOX

A-420

8/31/55



REQ.	ITEM	PART NO.	DESCRIPTION	SYMBOL
	1/2" ROD.		THE TECHNICAL MATERIEL CORP.	
	STOCK SIZE		MAMARONECK. NEW YORK	
	BRASS	#	SHAFT LOCK, HELICAL GEAR	
	MATERIAL	WEIGHT PER PC.	VOX-PMO	
	FREE TURNING			
	TYPE & TEMPER			
	HEAT TREAT. SPEC.			
	S-105 CAD PLATE			
	.0002			
	FINISH & SPEC. NO.			

#	ISSUE	ITEM	CHANGED FROM	DATE	CN. NO.	DRAFTS	CHECKER	ENG. APP.
			REDRAWN	8/31/55				

TOLERANCES			SCALE
ALL OTHERS	DEC. DIM. ±	FRAC. DIM. ± 1/64	DRILL, PUNCH, COMMERCIAL STOCK SIZES AND MANUFACTURERS TOLERANCES ARE NOT INCLUDED.

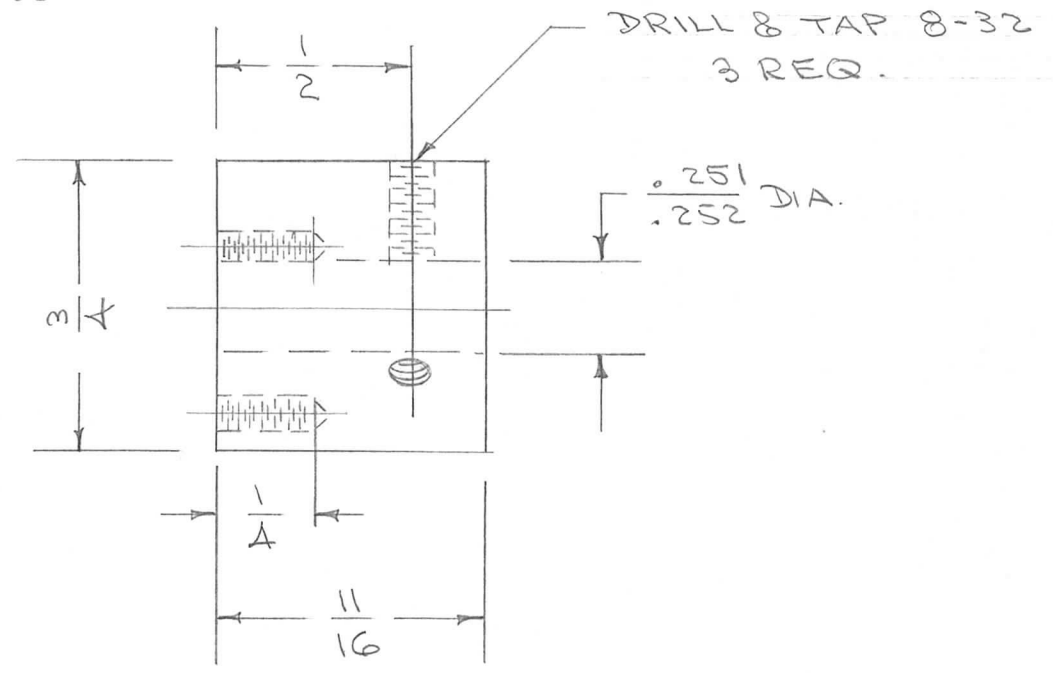
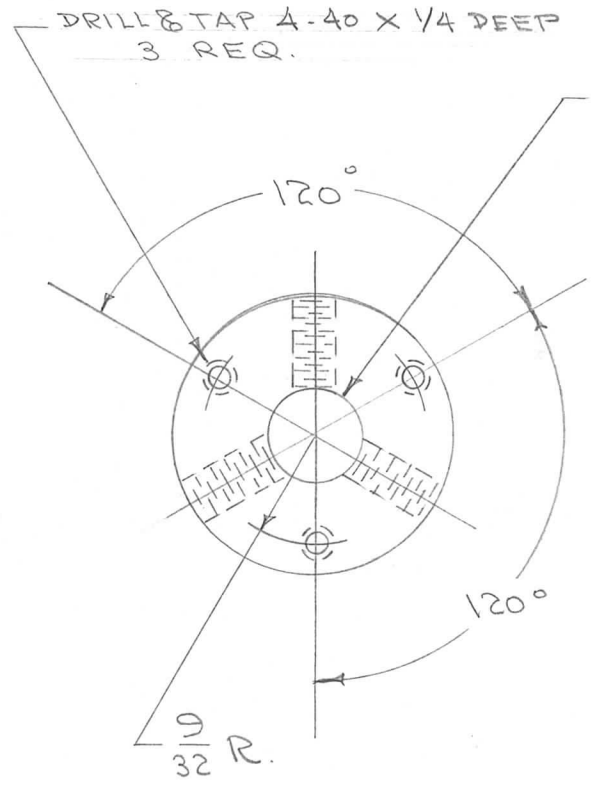
DRAWN: [Signature]  
 ELEC. DES. APP.: [Signature]  
 MECH. DES. APP.: [Signature]  
 CHECKED: [Signature]  
 FINAL APPROVAL: A.J.J.  
 PM-210

IF IT IS FOUND DESIRABLE TO CHANGE ANY TOLERANCE OR OTHER DETAIL SPECIFIED ON THIS DRAWING NOTIFY THE PURCHASER PROMPTLY.

PM-212

MAXIMUM ALLOWABLE TOLERANCES HAVE BEEN DETERMINED AND DEVIATIONS WILL BE CAUSE FOR REJECTION. REMOVE ALL BURRS AND SHARP EDGES

REQ. PER UNIT	USED ON			
	MODEL	PROJECT NO.	ASS'Y. NO.	DATE
1	VOX		A-586	8-31-55



REQ.	ITEM	PART NO.	DESCRIPTION	SYMBOL
	3/4 D. ROD.		THE TECHNICAL MATERIEL CORP.	
	STOCK SIZE		MAMARONECK, NEW YORK	
	BRASS	#	DIAL BUSHING	
	MATERIAL	WEIGHT PER PC.		VOX
	FREE TURNING			
	TYPE & TEMPER			
	HEAT TREAT. SPEC.			
	FINISH & SPEC. NO.			

#	#	REDRAWN	8/31/55	#	ISS	CHK	ENG. APP.
ISSUE	ITEM	CHANGED FROM	DATE	CN. NO.	DRAFTS	CHECKER	ENG. APP.
TOLERANCES			SCALE				
ALL OTHERS	DEC. DIM. ± .005 FRAC. DIM. ± 1/64 ANGULAR DIM. ±		DRILL, PUNCH, COMMERCIAL STOCK SIZES AND MANUFACTURERS TOLERANCES ARE NOT INCLUDED.				

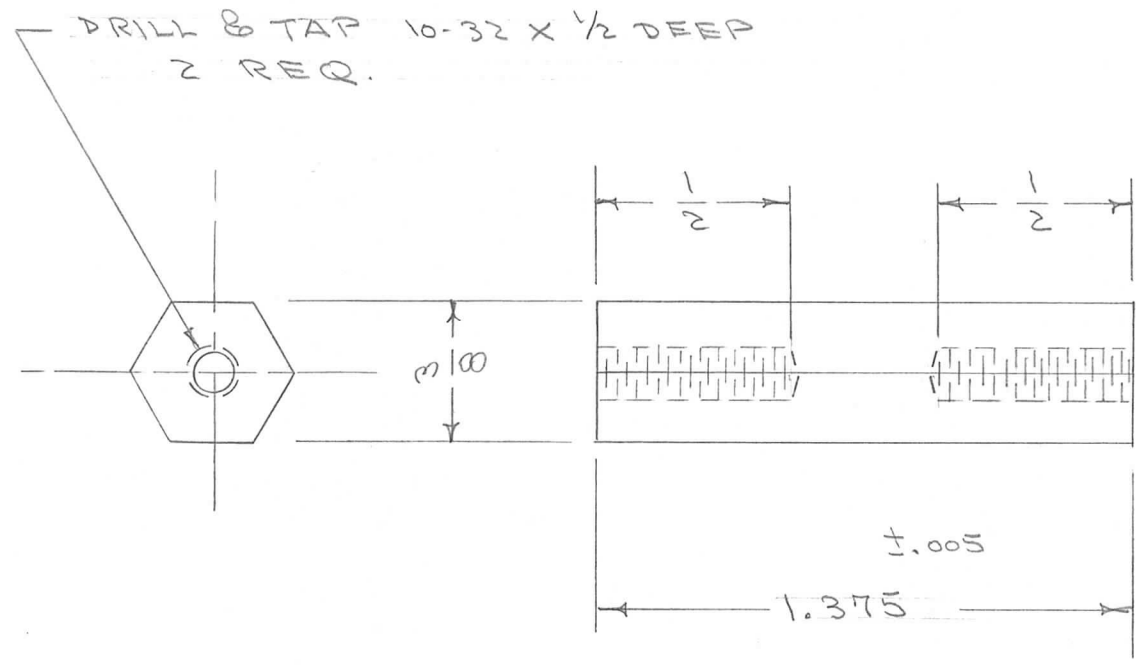
VOX  
 CDD 8/31/55  
 DRAWN  
 CHECKED  
 FINAL APPROVAL  
 PM-212

IF IT IS FOUND DESIRABLE TO CHANGE ANY TOLERANCE OR OTHER DETAIL SPECIFIED ON THIS DRAWING NOTIFY THE PURCHASER PROMPTLY.

PM-214

MAXIMUM ALLOWABLE TOLERANCES HAVE BEEN DETERMINED AND DEVIATIONS WILL BE CAUSE FOR REJECTION. REMOVE ALL BURRS AND SHARP EDGES

REQ. PER UNIT	USED ON			
	MODEL	PROJECT NO.	ASS'Y. NO.	DATE
A	VOX		A-586	8/31/55



REQ.	ITEM	PART NO.	DESCRIPTION	SYMBOL
	HEXAGONAL ROD 3/8 ACROSS FLATS		THE TECHNICAL MATERIEL CORP. MAMARONECK. NEW YORK	
	STOCK SIZE			
	BRASS	—	MOTOR MOUNT RODS	
	MATERIAL	WEIGHT PER PC.		
	FREE TURNING		VOX	
	TYPE & TEMPR		8/31/55 CAD	
	—		DRAWN	ELEC. DES. APP. MECH. DES. APP.
	HEAT TREAT. SPEC.		CHECKED	FINAL APPROVAL
	S-105 CAD. PLATE .0002			
	FINISH & SPEC. NO.			

#	ISSUE	ITEM	CHANGED FROM	DATE	CN. NO.	DRAFTS	CHECKER	ENG. APP.
			REDRAWN	8/31/55				

TOLERANCES	SCALE
ALL OTHERS DEC. DIM. ± FRAC. DIM. ± 1/64 ANGULAR DIM. ±	DRILL, PUNCH, COMMERCIAL STOCK SIZES AND MANUFACTURERS TOLERANCES ARE NOT INCLUDED.

PM-214



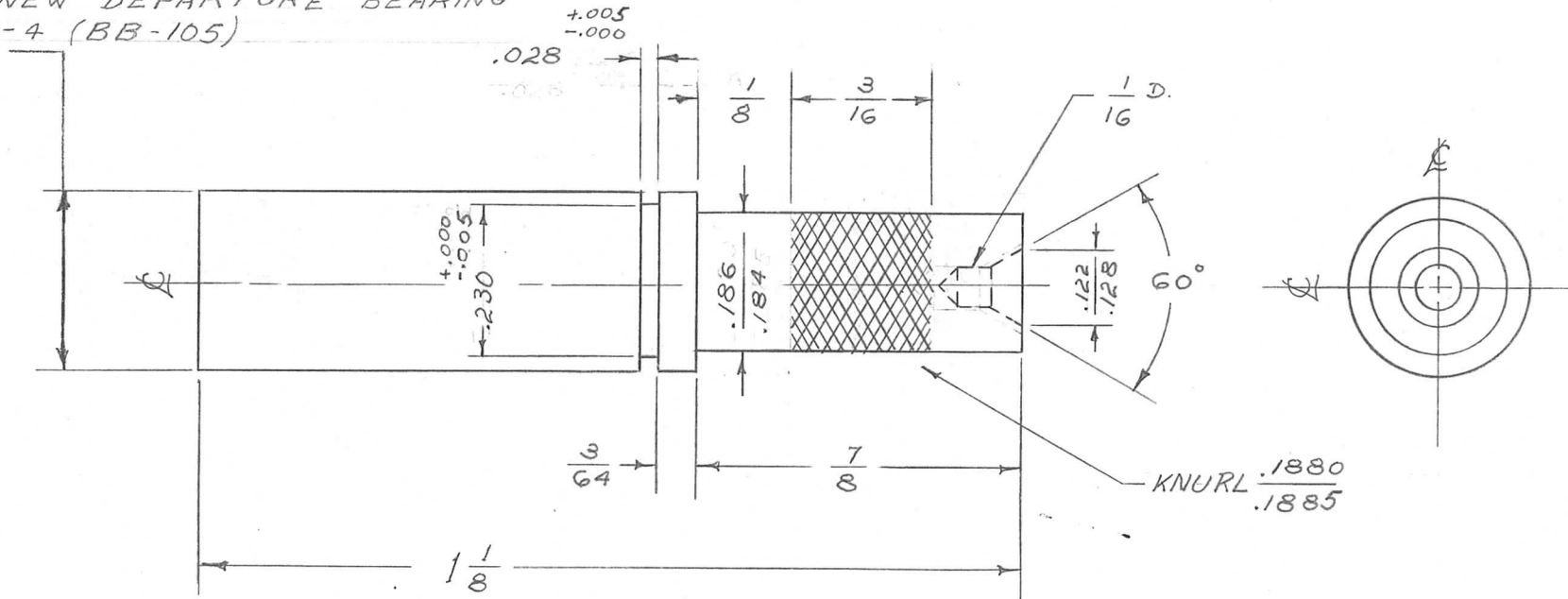
IF IT IS FOUND DESIRABLE TO CHANGE ANY TOLERANCE OR OTHER DETAIL SPECIFIED ON THIS DRAWING NOTIFY THE PURCHASER PROMPTLY.

PM-215 B

MAXIMUM ALLOWABLE TOLERANCES HAVE BEEN DETERMINED AND DEVIATIONS WILL BE CAUSE FOR REJECTION. REMOVE ALL BURRS AND SHARP EDGES

REQ. PER. UNIT	USED ON			
	MODEL	PROJECT NO.	ASS'Y. NO.	DATE
1	A-1000		A-422	

LIGHT PRESS FIT FOR INNER BORE ON NEW DEPARTURE BEARING # R-4 (BB-105)



REQ.	ITEM	PART NO.	DESCRIPTION	SYMBOL
		— # —	THE TECHNICAL MATERIEL CORP.	
		STOCK SIZE	MAMARONECK. NEW YORK	
		STEEL — # —	PINION SHAFT	
		MATERIAL WEIGHT PER PC.		
		STAINLESS		
		TYPE & TEMPER	P.B. 12-17-54	
		NO. 303	DRAWN	ELEC. DES. APP. MECH. DES. APP.
		HEAT TREAT. SPEC.	Checked	Final Approval
		FINISH & SPEC. NO.		PM-215 B

ISSUE	ITEM	CHANGED FROM	DATE	CN. NO.	DRAFTS	CHECKER	ENG. APP.
B	1	REVISED, REDRAWN	12-17-54	2	R.B.	JAW	WDC

TOLERANCES

SCALE A SIZE

ALL OTHERS

DEC. DIM.  $\pm$

FRAC. DIM.  $\pm \frac{1}{64}$

ANGULAR DIM.  $\pm$

DRILL, PUNCH, COMMERCIAL STOCK SIZES AND MANUFACTURERS TOLERANCES ARE NOT INCLUDED.



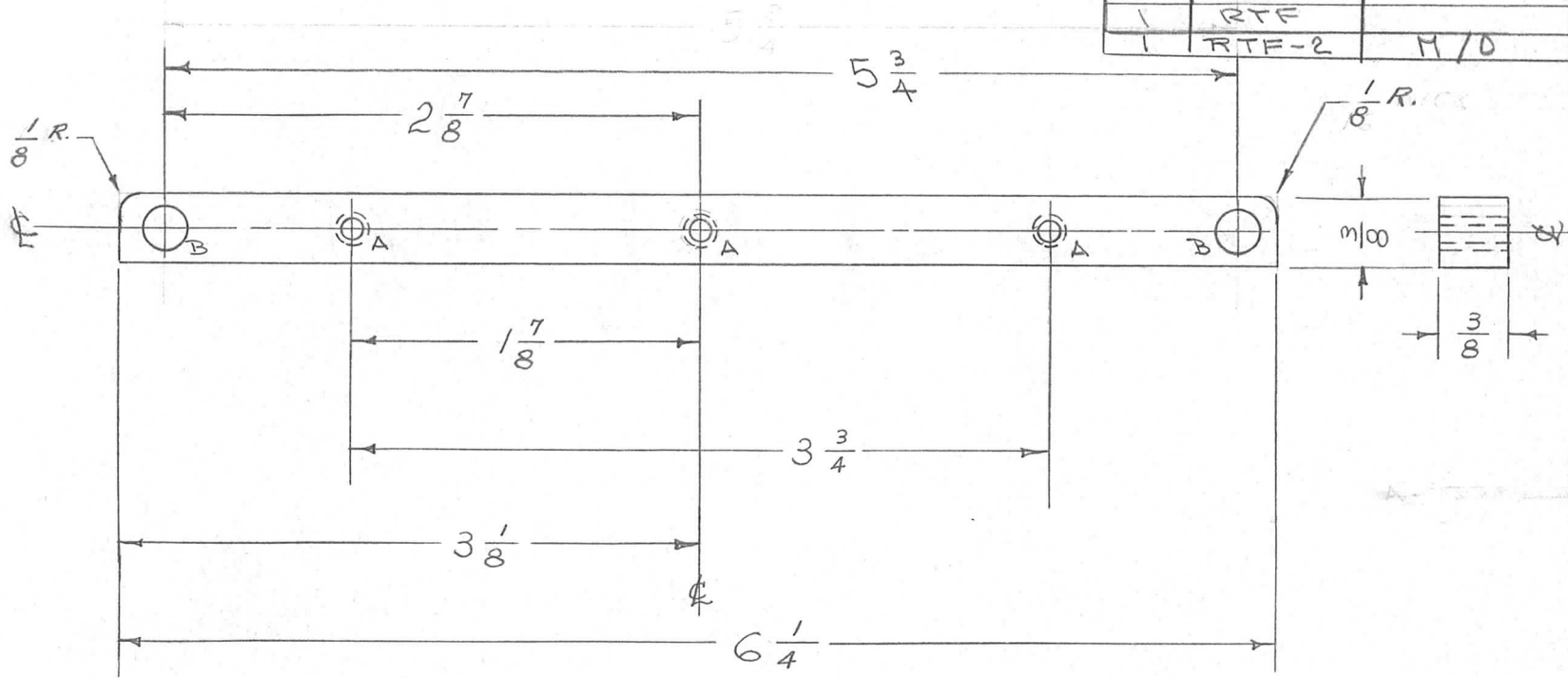
IF IT IS FOUND DESIRABLE TO CHANGE ANY TOLERANCE OR OTHER DETAIL SPECIFIED ON THIS DRAWING NOTIFY THE PURCHASER PROMPTLY.

PM-216 A

MAXIMUM ALLOWABLE TOLERANCES HAVE BEEN DETERMINED AND DEVIATIONS WILL BE CAUSE FOR REJECTION. REMOVE ALL BURRS AND SHARP EDGES

REQ. PER UNIT	USED ON			
	MODEL	PROJECT NO.	ASS'Y. NO.	DATE
1	PMO-1	285		1-19-55
1	VOX	101		1-19-55
1	VOX-1 VOX-2	291		1-19-55
1	RTF			2-1-56
1	RTF-2	M/D		10-10-58

A - DRILL & TAP G-32 3 REQ.  
B - 1/4" D (.250) 2 REQ.



REQ.	ITEM	PART NO.	DESCRIPTION	SYMBOL
		3/8 X 3/8	THE TECHNICAL MATERIEL CORP. MAMARONECK, NEW YORK	
		STOCK SIZE		
		ALUMINUM	FRONT SUPPORT ARM	
		MATERIAL	WEIGHT PER PC.	
		2024 - T4	COVEN ASSY.	
		TYPE & TEMPER	MB-1-19-55	WDC
			DRAWN	ELEC. DES. APP.
			MECH. DES. APP.	
			HEAT TREAT. SPEC.	
		S-101 CAUSTIC DIP S-107 LACQUER	CHECKED	FINAL APPROVAL
		FINISH & SPEC. NO.		PM-216 A

A	1	1/8 R. ADDED	3-28-55	1	P.B.	JAB	WDC
ISSUE	ITEM	CHANGED FROM	DATE	CN. NO.	DRAFTS	CHECKER	ENG. APP.

TOLERANCES		SCALE
ALL OTHERS	DEC. DIM. ± FRAC. DIM. ± 1/64 ANGULAR DIM. ±	DRILL, PUNCH, COMMERCIAL STOCK SIZES AND MANUFACTURERS TOLERANCES ARE NOT INCLUDED.

IF IT IS FOUND DESIRABLE TO CHANGE ANY TOLERANCE OR OTHER DETAIL SPECIFIED ON THIS DRAWING NOTIFY THE PURCHASER PROMPTLY.

PM-218

MAXIMUM ALLOWABLE TOLERANCES HAVE BEEN DETERMINED AND DEVIATIONS WILL BE CAUSE FOR REJECTION. REMOVE ALL BURRS AND SHARP EDGES

REQ. PER UNIT

USED ON

2

MODEL

PROJECT NO.

ASS'Y. NO.

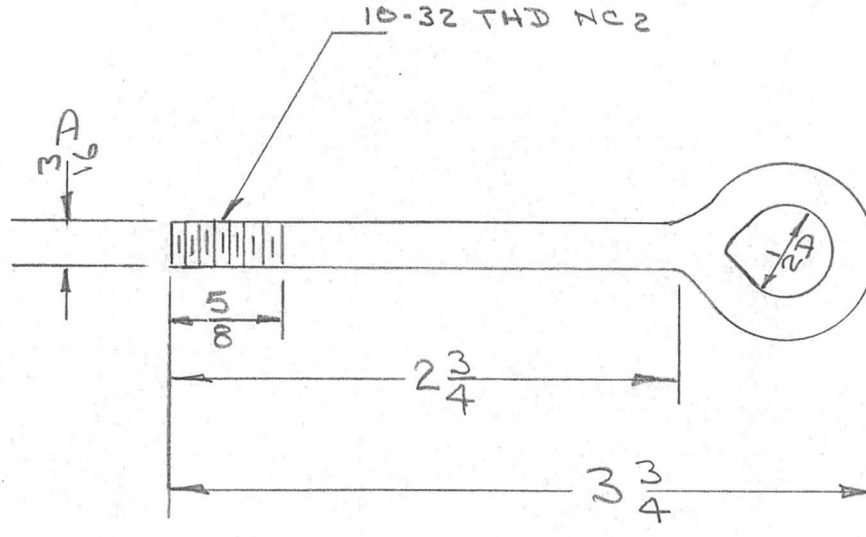
DATE

DAC

180

A-623

12-9-53



REQ.	ITEM	PART NO.	DESCRIPTION	SYMBOL
		3/16D ROD	THE TECHNICAL MATERIEL CORP.	
		STOCK SIZE	MAMARONECK. NEW YORK	
		BRASS	STUD BOLT	
		MATERIAL		
		WEIGHT PER PC.		
		FREE TURNING		
		TYPE & TEMPER		
		HEAT TREAT. SPEC.		
		S-105 .0002		
		CADMIUM PLATE		
		FINISH & SPEC. NO.		

ISSUE ITEM CHANGED FROM DATE CN. NO. DRAFTS CHECKER ENG. APP.

TOLERANCES

SCALE

ALL OTHERS

DEC. DIM.  $\pm$   
FRAC. DIM.  $\pm$   
ANGULAR DIM.  $\pm$

$\frac{1}{32}$

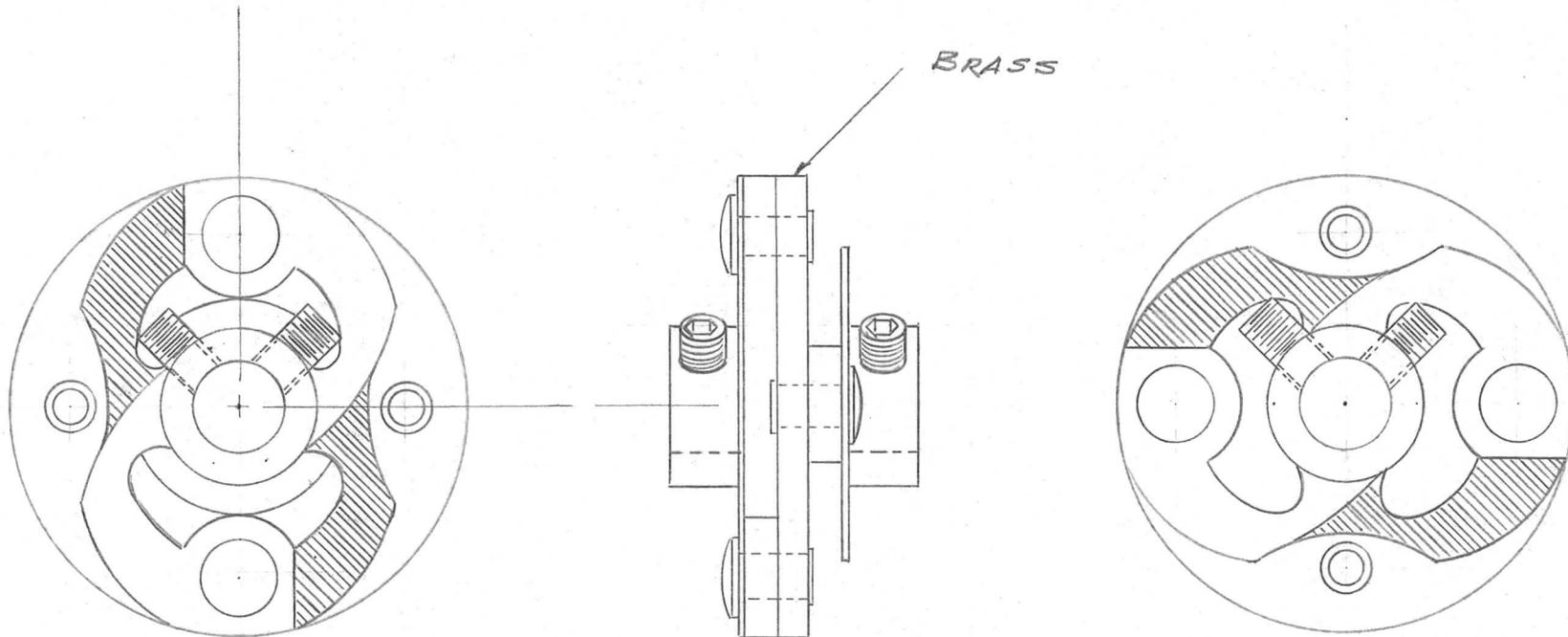
DRILL, PUNCH, COMMERCIAL STOCK SIZES AND MANUFACTURERS TOLERANCES ARE NOT INCLUDED.

DRAWN: JAW  
ELEC. DES. APP.: APB  
MECH. DES. APP.: WDE  
CHECKED: C.A.D.D.  
FINAL APPROVAL: APB

PM-218

REQ. PER UNIT	USED ON		
	MODEL	ASS'Y. NO.	DATE
2	VOX	A-426	6-11-58
3	RTF		6-11-58
3	RTF-2	M/D	11-20-58

PM-220 C



NOTE: SHADED AREA TO BE REMOVED AS SHOWN

TO BE SUPPLIED BY MFR.:

4 HEADLESS SET SCREWS, 6-32 X 3/16 LONG,  
(HEX SOCKET HEAD) TMC EQUIV. AN565D6H3

REF: FNC-46-S

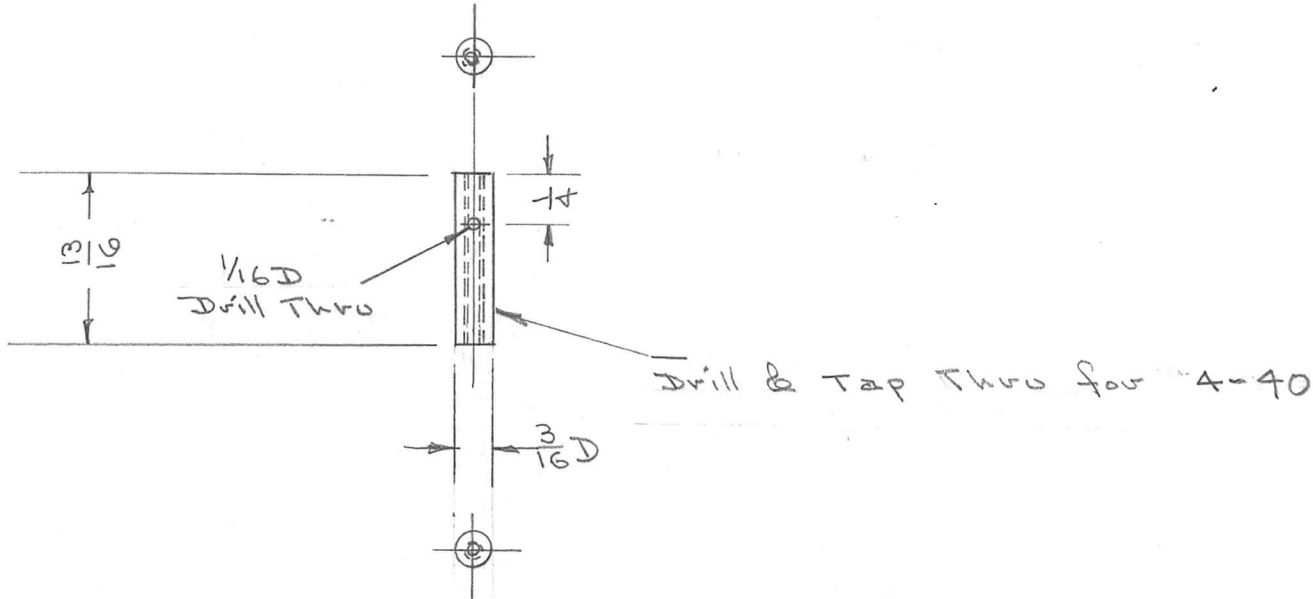
REQ.	ITEM	PART NO.	DESCRIPTION				SYMBOL
		USE TMC # MC-104-2	THE TECHNICAL MATERIEL CORP. MAMARONECK, NEW YORK				
		STOCK SIZE	MODIFICATION OF FLEXIBLE HAMMARLUND COUPLING				
C	1	REDRAWN No. CHG.	6/11/58	1	acc	JDE	
ISSUE	ITEM	CHANGED FROM	DATE	CH. NO.	DRAFTS	CHECKER	ENG. APP.
TOLERANCES			SCALE:				
DEC. DIM. ±			MAXIMUM ALLOWABLE TOLERANCES HAVE BEEN DETERMINED AND ANY DEVIATIONS WILL BE CAUSE FOR REJECTION.				
FRAC. DIM. ±			REMOVE ALL BURRS AND SHARP EDGES				
ANGULAR DIM. ±							
TYPE & TEMPER		HEAT TREAT. SPEC.	DRAWN	CHECKED	FINAL APPROVAL		
FINISH & SPEC. NO.		ELEC. DES. APP.	MECH. DES. APP.	PM-220		C	

IF IT IS FOUND DESIRABLE TO CHANGE ANY TOLERANCE OR OTHER DETAIL SPECIFIED ON THIS DRAWING NOTIFY THE PURCHASER PROMPTLY.

PM-221

MAXIMUM ALLOWABLE TOLERANCES HAVE BEEN DETERMINED AND DEVIATIONS WILL BE CAUSE FOR REJECTION. REMOVE ALL BURRS AND SHARP EDGES

QTY PER UNIT	USED ON			
	MODEL	PROJECT NO.	ASS'Y. NO.	DATE
2	DAC	180	A-623	12-10-53



REQ.	ITEM	PART NO.	DESCRIPTION	SYMBOL
	3/16 D ROD		THE TECHNICAL MATERIEL CORP.	
	STOCK SIZE		MAMARONECK. NEW YORK	
	BRASS	#	POST	
	MATERIAL	WEIGHT PER PC.	Model DAC	
	Free mach.			
	TYPE & TEMPER			
	#			
	HEAT TREAT. SPEC.			
	S-105 .0002			
	CADMIUM PLATE			
	FINISH & SPEC. NO.			

ISSUE	ITEM	CHANGED FROM	DATE	CN. NO.	DRAFTS	CHECKER	ENG. APP.
TOLERANCES			SCALE				
ALL OTHERS			DRILL, PUNCH, COMMERCIAL STOCK SIZES AND MANUFACTURERS TOLERANCES ARE NOT INCLUDED.				
DEC. DIM. ±							
FRAC. DIM. ± 1/64							
ANGULAR DIM. ±							

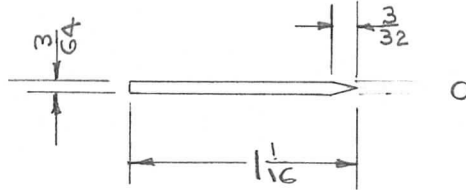
DRAWN	ELEC. DES. APP.	MECH. DES. APP.
FAW	AMB	WJ
C.D.B.	AMB	
CHECKED	FINAL APPROVAL	
	PM-221	

IF IT IS FOUND DESIRABLE TO CHANGE ANY TOLERANCE OR OTHER DETAIL SPECIFIED ON THIS DRAWING NOTIFY THE PURCHASER PROMPTLY.

PM-222

MAXIMUM ALLOWABLE TOLERANCES HAVE BEEN DETERMINED AND DEVIATIONS WILL BE CAUSE FOR REJECTION. REMOVE ALL BURRS AND SHARP EDGES

QTY PER UNIT	USED ON			
	MODEL	PROJECT NO.	ASS'Y. NO.	DATE
2	DAC	180		12-9-53



REQ.	ITEM	PART NO.	DESCRIPTION	SYMBOL
		3/64 D	THE TECHNICAL MATERIEL CORP.	
		STOCK SIZE	MAMARONECK. NEW YORK	
		BRASS	SPARK ROD	
		MATERIAL	DAC	
		WEIGHT PER PC.		
		free mach.		
		TYPE & TEMPER	JAL De	ARB
			DRAWN	MECH. DES. APP.
			ELEC. DES. APP.	
			e.o.d.	ARB
			CHECKED	FINAL APPROVAL
		HEAT TREAT. SPEC.		
		S-105 .0003		
		CADMIUM PLATE		
		FINISH & SPEC. NO.		
				PM-222

ISSUE	ITEM	CHANGED FROM	DATE	CN. NO.	DRAFTS	CHECKER	ENG. APP.
TOLERANCES			SCALE $\frac{1}{16}$				
ALL OTHERS		DEC. DIM. $\pm$ FRAC. DIM. $\pm$ ANGULAR DIM. $\pm$	DRILL, PUNCH, COMMERCIAL STOCK SIZES AND MANUFACTURERS TOLERANCES ARE NOT INCLUDED.				
		$\frac{1}{64}$					

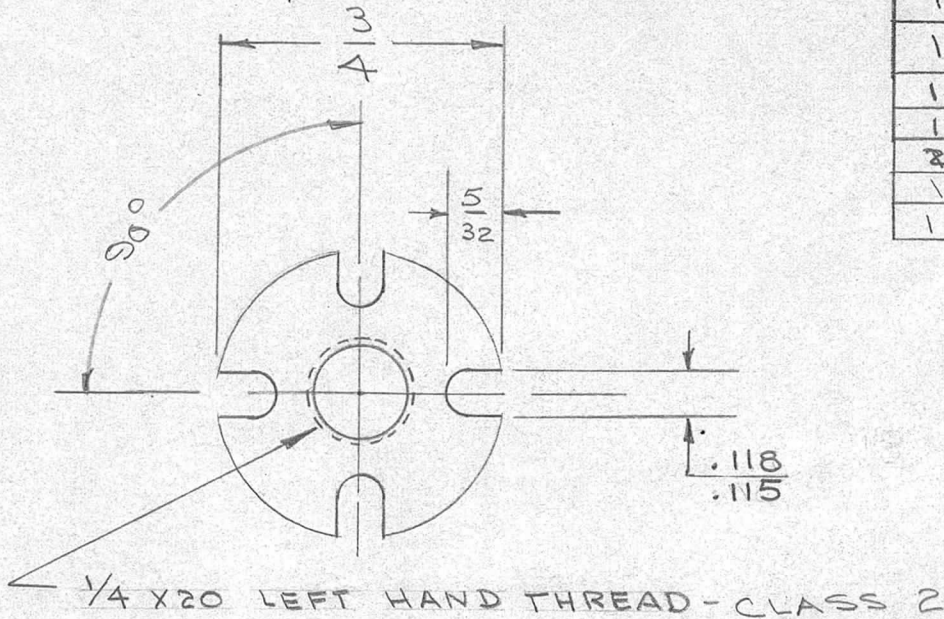


IF IT IS FOUND DESIRABLE TO CHANGE ANY TOLERANCE OR OTHER DETAIL SPECIFIED ON THIS DRAWING NOTIFY THE PURCHASER PROMPTLY.

PM-224 B

MAXIMUM ALLOWABLE TOLERANCES HAVE BEEN DETERMINED AND DEVIATIONS WILL BE CAUSE FOR REJECTION. REMOVE ALL BURRS AND SHARP EDGES

REQ PER UNIT	USED ON			
	MODEL	PROJECT NO.	ASS'Y. NO.	DATE
1	VOX	101	A-415	3-4-53
1	PMD-2	285		8/16/54
1	VOX-1	291		1/17/55
1	VOX-2	291		1/17/55
2	GPR	297		4-4-55
1	RTF			2-1-56
1	RTF-2	F/P		11-20-58



ISSUE	ITEM	CHANGED FROM	DATE	CN. NO.	DRAFTS	CHECKER	ENG. APP.
B	1	.118 TOL. WAS .117 .115	12-3-58	Z	J.C.B.	J.H.	dr
A	1	DIM. ADDED	8/27/54	1	J.H.	J.H.	dr

REQ.	ITEM	PART NO.	DESCRIPTION	SYMBOL
	1/16 THICK		THE TECHNICAL MATERIEL CORP. MAMARONECK, NEW YORK	
	STEEL	"	PLATE, DIAL LOCKING	
	COLD ROLLED		L. H.	
	TYPE & TEMPER		C.D.D. 3-4-53	A J J
	HEAT TREAT. SPEC.		DRAWN	ELEC. DES. APP.
	8-105 CADMIUM PLATE •0003		CHECKED	FINAL APPROVAL
	FINISH & SPEC. NO.		SUPERCEDES BMS079	PM-224 B

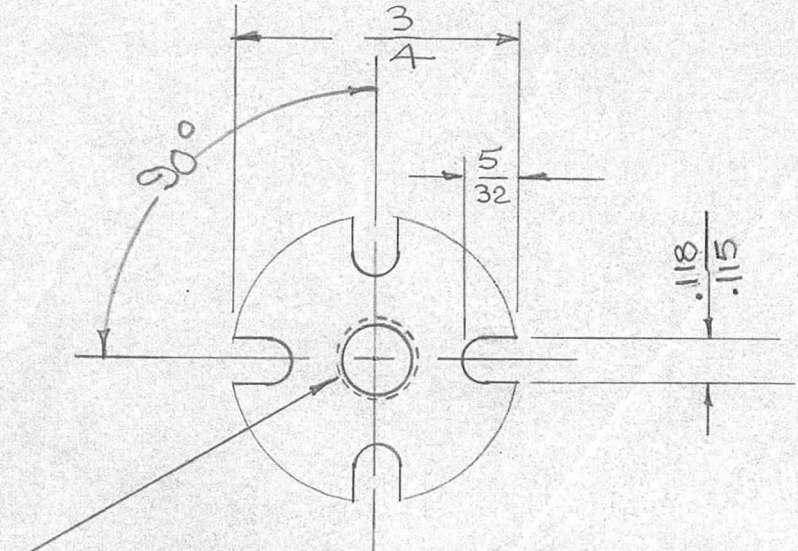
TOLERANCES		SCALE	DRILL, PUNCH, COMMERCIAL STOCK SIZES AND MANUFACTURERS TOLERANCES ARE NOT INCLUDED.
ALL OTHERS	DEC. DIM. ± FRAC. DIM. ± 1/64 ANGULAR DIM. ± 1°	1/16	

IF IT IS FOUND DESIRABLE TO CHANGE ANY TOLERANCE OR OTHER DETAIL SPECIFIED ON THIS DRAWING NOTIFY THE PURCHASER PROMPTLY.

PM-225 B

MAXIMUM ALLOWABLE TOLERANCES HAVE BEEN DETERMINED AND DEVIATIONS WILL BE CAUSE FOR REJECTION. REMOVE ALL BURRS AND SHARP EDGES

REQ PER UNIT	USED ON			
	MODEL	PROJECT NO.	ASS'Y. NO.	DATE
1	VOX	101	A-415	3-4-53
1	PMO-2	285		8-16-54
1	VOX-1	291		1/17/55
1	VOX-2	291		1/17/55
2	GPR	297		4-4-55
1	RTF			2-1-56
1	RTF-2	F/P		11-20-58



10-32 RIGHT HAND THREAD - CLASS 2

REQ.	ITEM	PART NO.	DESCRIPTION	SYMBOL
		1/16 THICK	THE TECHNICAL MATERIEL CORP. MAMARONECK, NEW YORK	
		STOCK SIZE		
		STEEL	PLATE, DIAL LOCKING	
		MATERIAL		
		WEIGHT PER PC.	R. H.	
		COLD ROLLED		
		TYPE & TEMPER	C.D.D. 3-4-53	
			DRAWN	ELEC. DES. APP.
			CHECKED	FINAL APPROVAL
		HEAT TREAT. SPEC.		
		S-105 CAD. PLATE		
		.0003		
		FINISH & SPEC. NO.		

ISSUE	ITEM	CHANGED FROM	DATE	CN. NO.	DRAFTS	CHECKER	ENG. APP.
B	1	.118 DIM. WAS .117	12-3-58	2	J.C.B.		
A	1	DIM. ADDED	8/27/56	1			

TOLERANCES		SCALE
ALL OTHERS	DEC. DIM. ± FRAC. DIM. ± 1/64 ANGULAR DIM. ± 10'	DRILL, PUNCH, COMMERCIAL STOCK SIZES AND MANUFACTURERS TOLERANCES ARE NOT INCLUDED.

SUPERCEDES BMS079  
 ©  
 PM-225 B



IF IT IS FOUND DESIRABLE TO CHANGE ANY TOLERANCE OR OTHER DETAIL SPECIFIED ON THIS DRAWING NOTIFY THE PURCHASER PROMPTLY.

PM-226

MAXIMUM ALLOWABLE TOLERANCES HAVE BEEN DETERMINED AND DEVIATIONS WILL BE CAUSE FOR REJECTION. REMOVE ALL BURRS AND SHARP EDGES

USED ON

MODEL	PROJECT NO.	ASS'Y. NO.	DATE
RAPC			11/11/53

PLATEN, recorder pen: brass, black oxide finish; knurled knob 5/16" x 1" x 1/2" diam; attached.

Sym 0-7 No part #

Ref: TR McElroy

REQ.	ITEM	PART NO.	DESCRIPTION	SYMBOL
			<b>THE TECHNICAL MATERIEL CORP.</b>	
			MAMARONECK. NEW YORK	
STOCK SIZE			PLATEN, RECORDER PEN	
MATERIAL		WEIGHT PER PC.		
TYPE & TEMPER				
			DRAWN	MECH. DES. APP.
			<i>ECM</i>	
HEAT TREAT. SPEC.			CHECKED	FINAL APPROVAL
			PM-226	
FINISH & SPEC. NO.				

ISSUE	ITEM	CHANGED FROM	DATE	CN. NO.	DRAFTS	CHECKER	ENG. APP.
TOLERANCES				SCALE			
ALL OTHERS		DEC. DIM. ± FRAC. DIM. ± ANGULAR DIM. ±		DRILL, PUNCH, COMMERCIAL STOCK SIZES AND MANUFACTURERS TOLERANCES ARE NOT INCLUDED.			

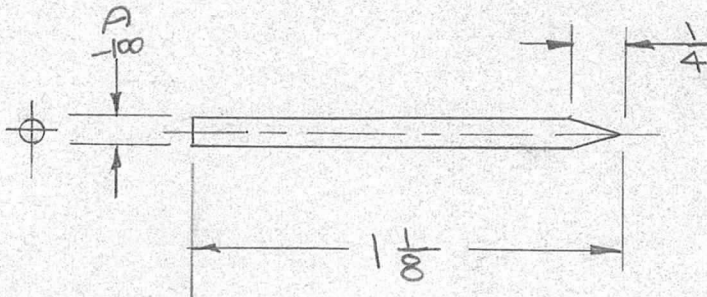
IF IT IS FOUND DESIRABLE TO CHANGE ANY TOLERANCE OR OTHER DETAIL SPECIFIED ON THIS DRAWING NOTIFY THE PURCHASER PROMPTLY.

PM-229

MAXIMUM ALLOWABLE TOLERANCES HAVE BEEN DETERMINED AND DEVIATIONS WILL BE CAUSE FOR REJECTION. REMOVE ALL BURRS AND SHARP EDGES

RELEASED

REQ. PER UNIT	USED ON			
	MODEL	PROJECT NO.	ASS'Y. NO.	DATE
2	DAC-1	180	A-455	4-30-53
1	A-1125		A-1219	1/18/56



REQ.	ITEM	PART NO.	DESCRIPTION	SYMBOL
		$\frac{1}{8} D$	THE TECHNICAL MATERIEL CORP. MAMARONECK, NEW YORK	
		STOCK SIZE		
		BRASS	SPARK ROD	
		MATERIAL	WEIGHT PER PC.	
		TYPE & TEMPER	JAB 5/5/53	
			DRAWN	ELEC. DES. APP. MECH. DES. APP.
			C.O.D.	
		HEAT TREAT. SPEC.	CHECKED	FINAL APPROVAL
		S-105 CADMIUM PLATE		PM-229
		FINISH & SPEC. NO.		

ISSUE	ITEM	CHANGED FROM	DATE	CN. NO.	DRAFTS	CHECKER	ENG. APP.
TOLERANCES			SCALE $\frac{1}{8}$				
ALL OTHERS	DEC. DIM. $\pm$ FRAC. DIM. $\pm$ ANGULAR DIM. $\pm$		DRILL, PUNCH, COMMERCIAL STOCK SIZES AND MANUFACTURERS TOLERANCES ARE NOT INCLUDED.				

IF IT IS FOUND DESIRABLE TO CHANGE ANY TOLERANCE OR OTHER DETAIL SPECIFIED ON THIS DRAWING NOTIFY THE PURCHASER PROMPTLY.

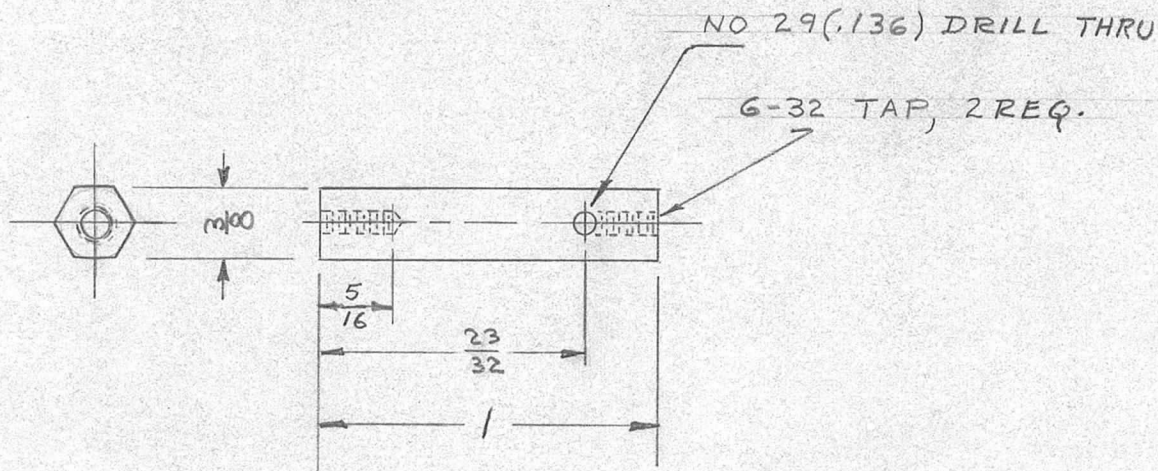
PM-230 A

MAXIMUM ALLOWABLE TOLERANCES HAVE BEEN DETERMINED AND DEVIATIONS WILL BE CAUSE FOR REJECTION. REMOVE ALL BURRS AND SHARP EDGES

RELEASED

USED ON

MODEL	PROJECT NO.	ASS'Y. NO.	DATE
DAC-1	180	A-455	4-30-53
A-1125		A-1219	1/20/56
TU-2			8-21-59



REQ.	ITEM	PART NO.	DESCRIPTION	SYMBOL
		3/8 HEX ROD.	THE TECHNICAL MATERIEL CORP. MAMARONECK, NEW YORK	
		STOCK SIZE		
		BRASS	POST	
		MATERIAL	WEIGHT PER PC.	
		TYPE & TEMPER	JAD 5/5/53	
			DRAWN	ELEC. DES. APP. MECH. DES. APP.
			JAD	
		HEAT TREAT. SPEC.	CHECKED	FINAL APPROVAL
		S-105 CADMIUM PLATE		
		FINISH & SPEC. NO.		

ISSUE	ITEM	CHANGED FROM	DATE	CN. NO.	DRAFTS	CHECKER	ENG. APP.
A	1	ROD WAS ROUND	4/11/53	1	ewd	JAD	ewd

TOLERANCES	SCALE
ALL OTHERS DEC. DIM. ± FRAC. DIM. ± ANGULAR DIM. ±	DRILL, PUNCH, COMMERCIAL STOCK SIZES AND MANUFACTURERS TOLERANCES ARE NOT INCLUDED.

PM-230 A



IF IT IS FOUND DESIRABLE TO CHANGE ANY TOLERANCE OR OTHER DETAIL SPECIFIED ON THIS DRAWING NOTIFY THE PURCHASER PROMPTLY.

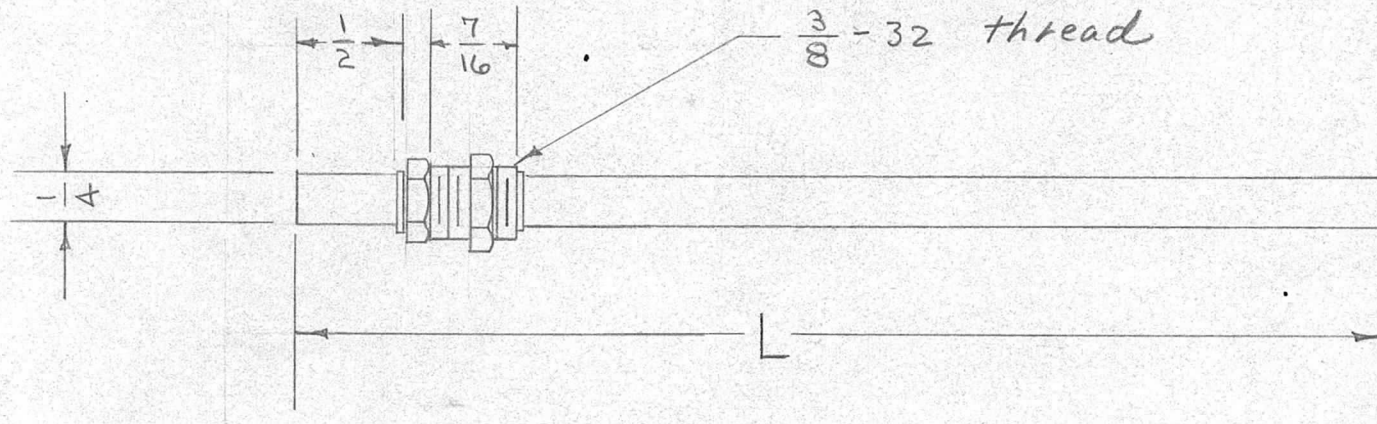
PM-234

MAXIMUM ALLOWABLE TOLERANCES HAVE BEEN DETERMINED AND DEVIATIONS WILL BE CAUSE FOR REJECTION. REMOVE ALL BURRS AND SHARP EDGES

USED ON

MODEL	PROJECT NO.	ASS'Y. NO.	DATE
-------	-------------	------------	------

TMC NO	CAT. NO	L
PM-234-1	551	3"
PM-234-2	552	6"



DIMENSIONS FOR REF. ONLY

REF: BIRNBACH MFG. CO.

REQ.	ITEM	PART NO.	DESCRIPTION	SYMBOL
			THE TECHNICAL MATERIEL CORP. MAMARONECK, NEW YORK	
		STOCK SIZE	PANEL BEARING	
		MATERIAL	WITH SHAFT	
		WEIGHT PER PC.		
		TYPE & TEMPER	C.D.D. 5-25-57	
			DRAWN	ELEC. DES. APP.
			71-70	MECH. DES. APP.
		HEAT TREAT. SPEC.	CHECKED	FINAL APPROVAL
		FINISH & SPEC. NO.		PM-234

ISSUE	ITEM	CHANGED FROM	DATE	CN. NO.	DRAFTS	CHECKER	ENG. APP.
TOLERANCES			SCALE				
ALL OTHERS	DEC. DIM. ± FRAC. DIM. ± ANGULAR DIM. ±		DRILL, PUNCH, COMMERCIAL STOCK SIZES AND MANUFACTURERS TOLERANCES ARE NOT INCLUDED.				





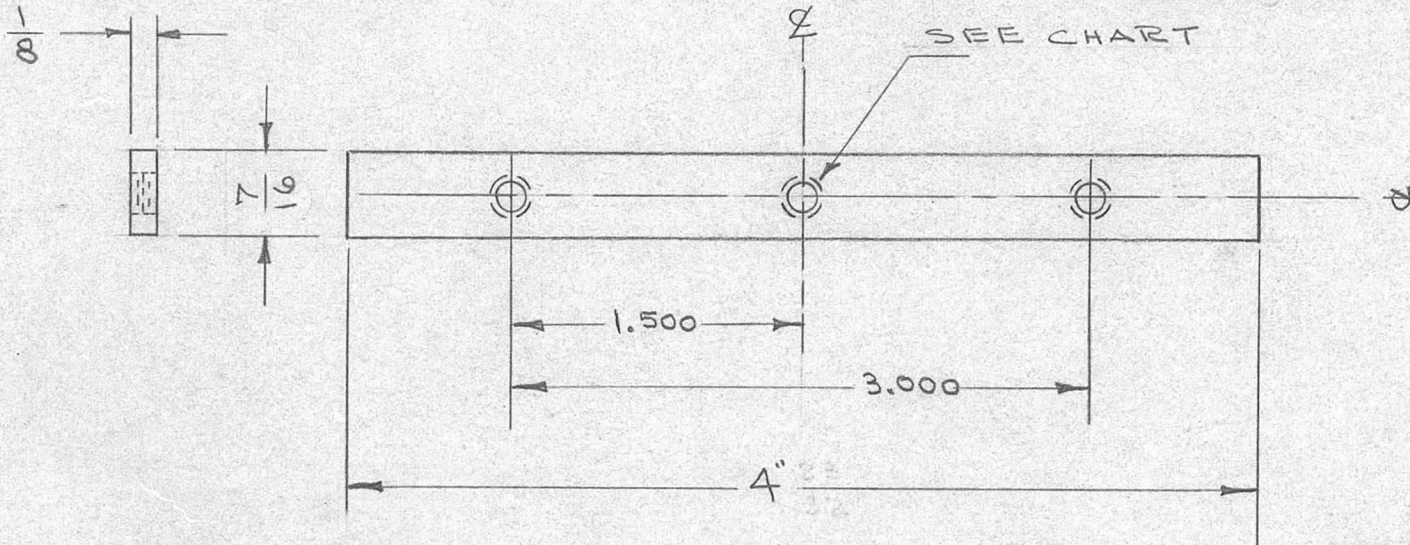
IF IT IS FOUND DESIRABLE TO CHANGE ANY TOLERANCE OR OTHER DETAIL SPECIFIED ON THIS DRAWING NOTIFY THE PURCHASER PROMPTLY.

PM-236 C

MAXIMUM ALLOWABLE TOLERANCES HAVE BEEN DETERMINED AND DEVIATIONS WILL BE CAUSE FOR REJECTION. REMOVE ALL BURRS AND SHARP EDGES

USED ON

MODEL	PROJECT NO.	ASS'Y. NO.	DATE
FFR-2			5-22-58
MSR			9-25-58



TMC NO	TAPPED HOLES	MODEL	REQ PER UNIT
PM-236-1	10-32	FFR	2
PM-236-2	8-32	MSR-1,3,4	2

ISSUE	ITEM	CHANGED FROM	DATE	CN. NO.	DRAFTS	CHECKER	ENG. APP.
C	1	FINISH & SPEC WAS S-105 CAD. PLATE	3-1-63	8325		Jde	Jde
B	2	CHART ADDED	11/8/57	2		Jde	amb
A	1	PM-236-1 WAS PM-236					
		4" WAS 4 <sup>23</sup> /32	3/24/56	1	13	Jde	WEE

REQ.	ITEM	PART NO.	DESCRIPTION	SYMBOL
		1/8 x 7/16	THE TECHNICAL MATERIEL CORP. MAMARONECK, NEW YORK	
		STEEL	BAR,	
		COLD ROLLED	PANEL LOCKING	
		S-135 NICKEL PLATE		

TOLERANCES	SCALE	DRILL, PUNCH, COMMERCIAL STOCK SIZES AND MANUFACTURERS TOLERANCES ARE NOT INCLUDED.
ALL OTHERS DEC. DIM. ± .005 FRAC. DIM. ± 1/64 ANGULAR DIM. ±		

DRAWN	ELEC. DES. APP.	MECH. DES. APP.
WEE 6-3-53		
CHECKED	FINAL APPROVAL	
	PM-236 C	

IF IT IS FOUND DESIRABLE TO CHANGE ANY TOLERANCE OR OTHER DETAIL SPECIFIED ON THIS DRAWING NOTIFY THE PURCHASER PROMPTLY.

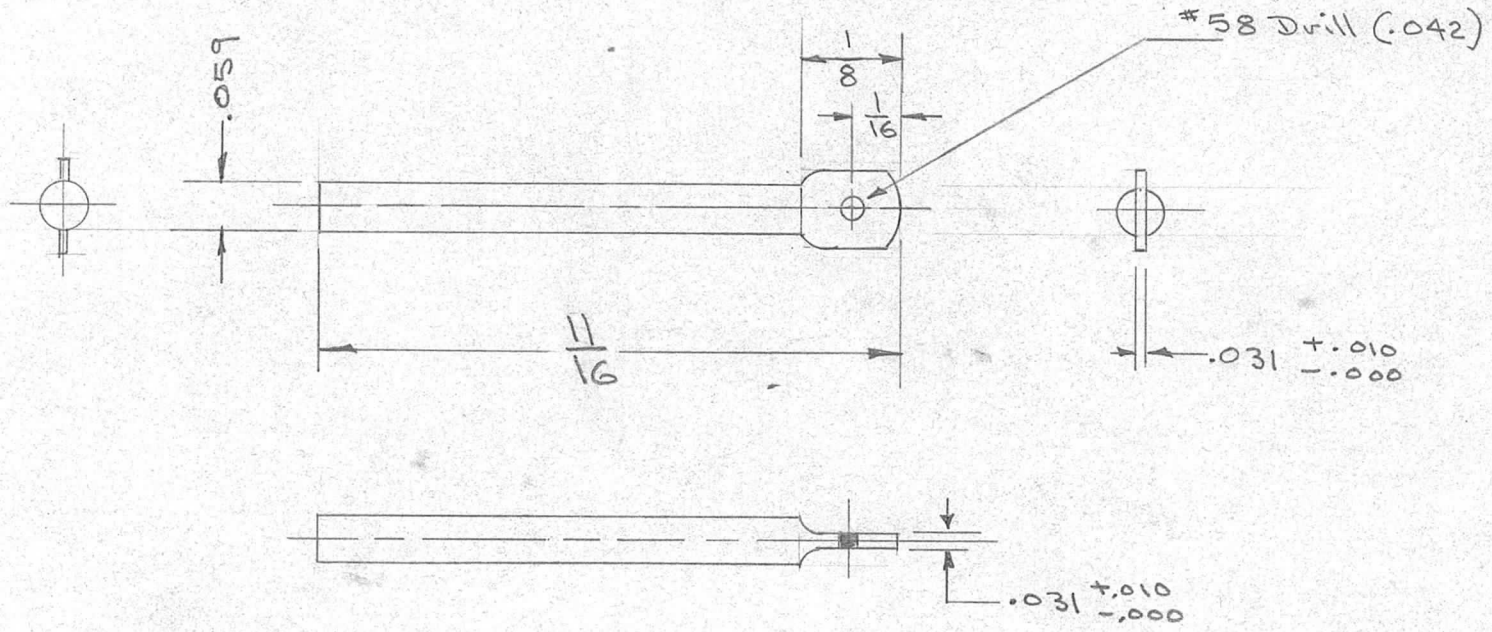
PM-240

MAXIMUM ALLOWABLE TOLERANCES HAVE BEEN DETERMINED AND DEVIATIONS WILL BE CAUSE FOR REJECTION. REMOVE ALL BURRS AND SHARP EDGES

RELEASED

USED ON

MODEL	PROJECT NO.	ASS'Y. NO.	DATE
JJ-117		A-479	



REQ.	ITEM	PART NO.	DESCRIPTION	SYMBOL
		$\#53 (.059)$	THE TECHNICAL MATERIEL CORP. MAMARONECK, NEW YORK	
		STOCK SIZE		
		BRASS ROD	SOLDER PIN	
		MATERIAL		
		WEIGHT PER PC.		
		DRILL GAUGE		
		TYPE & TEMPER	JADE 6-11-53	
			DRAWN	ELEC. DES. APP.
			WDE 6-12-53	MECH. DES. APP.
		HEAT TREAT. SPEC.	CHECKED	FINAL APPROVAL
		FINISH & SPEC. NO.		PM-240

ISSUE	ITEM	CHANGED FROM	DATE	CN. NO.	DRAFTS	CHECKER	ENG. APP.

TOLERANCES	SCALE
ALL OTHERS DEC. DIM. $\pm$ FRAC. DIM. $\pm$ $\frac{1}{64}$ ANGULAR DIM. $\pm$	DRILL, PUNCH, COMMERCIAL STOCK SIZES AND MANUFACTURERS TOLERANCES ARE NOT INCLUDED.



IF IT IS FOUND DESIRABLE TO CHANGE ANY TOLERANCE OR OTHER DETAIL SPECIFIED ON THIS DRAWING NOTIFY THE PURCHASER PROMPTLY.

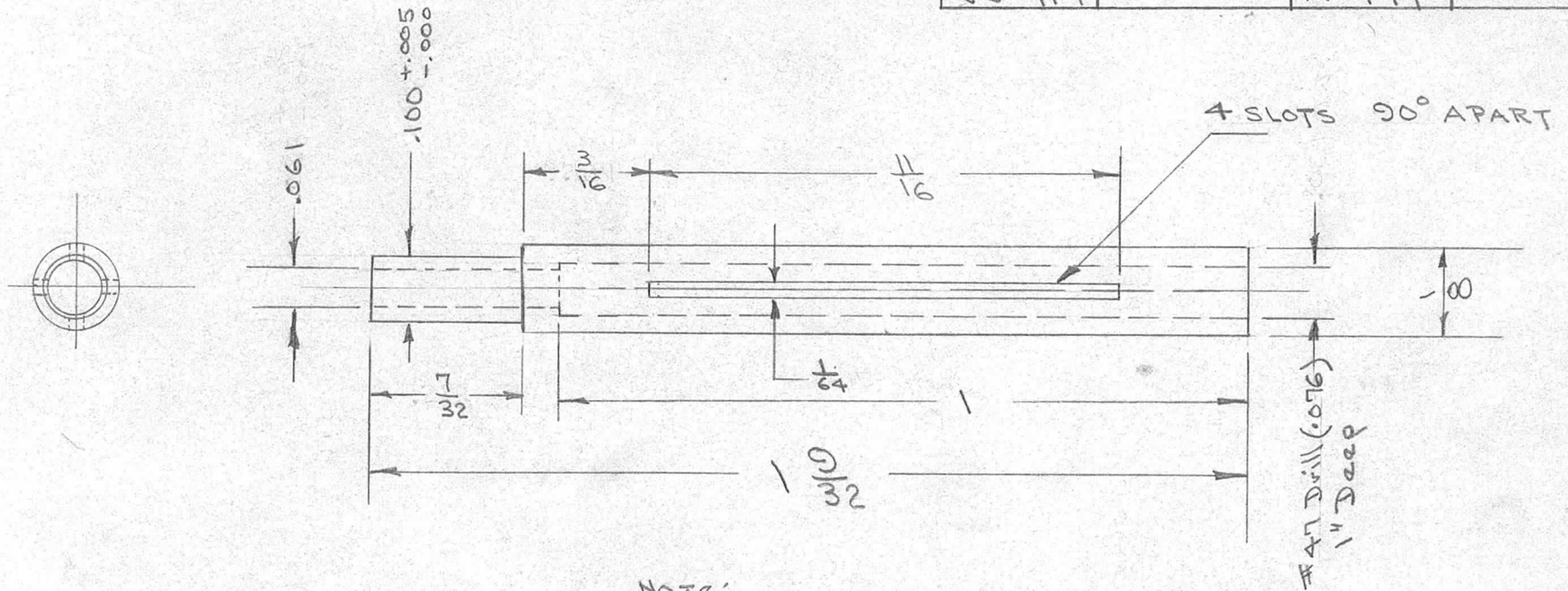
PM-241

MAXIMUM ALLOWABLE TOLERANCES HAVE BEEN DETERMINED AND DEVIATIONS WILL BE CAUSE FOR REJECTION. REMOVE ALL BURRS AND SHARP EDGES

RELEASED

USED ON

MODEL	PROJECT NO.	ASS'Y. NO.	DATE
JJ-117		A-479	



NOTE:

Hard Drawn Round  
Seamless Brass Tube

REQ.	ITEM	PART NO.	DESCRIPTION	SYMBOL
		1/8 OD X .061 I.D.	THE TECHNICAL MATERIEL CORP. MAMARONECK, NEW YORK	
		STOCK SIZE		
		See NOTE	CONTACT JACK	
		MATERIAL	WEIGHT PER PC.	
		TYPE & TEMPER		
		HEAT TREAT. SPEC.		
		FINISH & SPEC. NO.		

DATE 6-11-53  
DRAWN  
WOC 6-12-53  
MECH. DES. APP. [Signature]  
ELEC. DES. APP.  
CHECKED  
FINAL APPROVAL  
PM-241

ISSUE	ITEM	CHANGED FROM	DATE	CN. NO.	DRAFTS	CHECKER	ENG. APP.
ALL OTHERS		DEC. DIM. ± FRAC. DIM. ± 1/64 ANGULAR DIM. ±					

TOLERANCES SCALE  
DRILL, PUNCH, COMMERCIAL STOCK SIZES AND MANUFACTURERS TOLERANCES ARE NOT INCLUDED.

IF IT IS FOUND DESIRABLE TO CHANGE ANY TOLERANCE OR OTHER DETAIL SPECIFIED ON THIS DRAWING NOTIFY THE PURCHASER PROMPTLY.

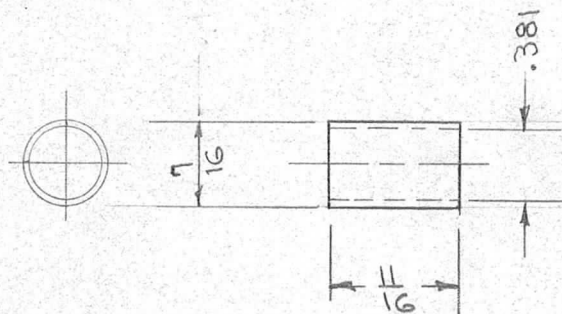
PM-242

MAXIMUM ALLOWABLE TOLERANCES HAVE BEEN DETERMINED AND DEVIATIONS WILL BE CAUSE FOR REJECTION. REMOVE ALL BURRS AND SHARP EDGES

RELEASED

USED ON

MODEL	PROJECT NO.	ASS'Y. NO.	DATE
JJ-117		A-479	



Note:

Hard Drawn Round Seamless Brass Tube.

REQ.	ITEM	PART NO.	DESCRIPTION	SYMBOL
		7/16 OD x .381 ID	THE TECHNICAL MATERIEL CORP. MAMARONECK, NEW YORK	
		STOCK SIZE		
		See Note	INNER SHELL	
		MATERIAL	WEIGHT PER PC.	
		TYPE & TEMPER		
			WDR 6-11-53	
			DRAWN	ELEC. DES. APP. MECH. DES. APP.
			WDR 6-12-53	
		HEAT TREAT. SPEC.	CHECKED	FINAL APPROVAL
		FINISH & SPEC. NO.		PM-242

ISSUE	ITEM	CHANGED FROM	DATE	CN. NO.	DRAFTS	CHECKER	ENG. APP.
TOLERANCES			SCALE				
ALL OTHERS	DEC. DIM. ± .005 FRAC. DIM. ± 1/64 ANGULAR DIM. ±		DRILL, PUNCH, COMMERCIAL STOCK SIZES AND MANUFACTURERS TOLERANCES ARE NOT INCLUDED.				



IF IT IS FOUND DESIRABLE TO CHANGE ANY TOLERANCE OR OTHER DETAIL SPECIFIED ON THIS DRAWING NOTIFY THE PURCHASER PROMPTLY.

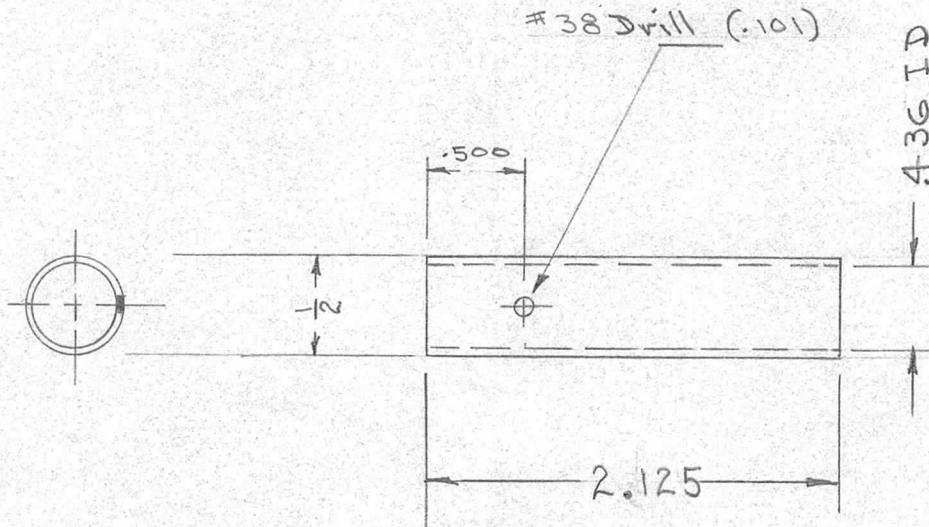
PM-243 | A

MAXIMUM ALLOWABLE TOLERANCES HAVE BEEN DETERMINED AND DEVIATIONS WILL BE CAUSE FOR REJECTION. REMOVE ALL BURRS AND SHARP EDGES

RELEASED

USED ON

MODEL	PROJECT NO.	ASS'Y. NO.	DATE
JJ-117		A-479	



Note:

Hard Drawn Round  
Seamless Brass Tube

REQ.	ITEM	PART NO.	DESCRIPTION	SYMBOL
		1/2 OD X .436 ID	THE TECHNICAL MATERIEL CORP. MAMARONECK, NEW YORK	
		STOCK SIZE		
		See Note	OUTER SHELL	
		MATERIAL	WEIGHT PER PC.	
		TYPE & TEMPER		
		HEAT TREAT. SPEC.		
		FINISH & SPEC. NO.		

ISSUE	ITEM	CHANGED FROM	DATE	CN. NO.	DRAFTS	CHECKER	ENG. APP.
A	1	2.125 WAS 2 1/8	7/21/53	1	WJD	WJD	PPB

TOLERANCES		SCALE
ALL OTHERS	DEC. DIM. ± .005 FRAC. DIM. ± 1/64 ANGULAR DIM. ±	DRILL, PUNCH, COMMERCIAL STOCK SIZES AND MANUFACTURERS TOLERANCES ARE NOT INCLUDED.

DATE	DRAWN	ELEC. DES. APP.	MECH. DES. APP.
JUN 6-11-53			
WJD 6-12-53			
CHECKED	FINAL APPROVAL		
	PM-243   A		

IF IT IS FOUND DESIRABLE TO CHANGE ANY TOLERANCE OR OTHER DETAIL SPECIFIED ON THIS DRAWING NOTIFY THE PURCHASER PROMPTLY.

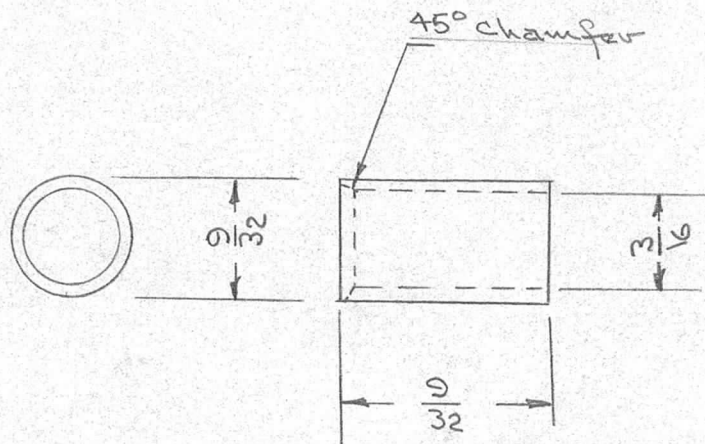
PM-244

MAXIMUM ALLOWABLE TOLERANCES HAVE BEEN DETERMINED AND DEVIATIONS WILL BE CAUSE FOR REJECTION. REMOVE ALL BURRS AND SHARP EDGES

RELEASED

USED ON

MODEL	PROJECT NO.	ASS'Y. NO.	DATE
JJ-117		A-479	6-11-53



REQ.	ITEM	PART NO.	DESCRIPTION	SYMBOL
			THE TECHNICAL MATERIEL CORP. MAMARONECK, NEW YORK	
		STOCK SIZE		
		Brass		GROUNDING RING
		MATERIAL	WEIGHT PER PC.	
		TYPE & TEMPER		
		HEAT TREAT. SPEC.		
		Silver Plate +0.0003 - .0005		
		FINISH & SPEC. NO.		

ISSUE	ITEM	CHANGED FROM	DATE	CN. NO.	DRAFTS	CHECKER	ENG. APP.

TOLERANCES	SCALE
ALL OTHERS DEC. DIM. ± FRAC. DIM. ± ANGULAR DIM. ±	DRILL, PUNCH, COMMERCIAL STOCK SIZES AND MANUFACTURERS TOLERANCES ARE NOT INCLUDED.

WDE . 6-12-53

DRAWN: [Signature]

ELEC. DES. APP. [Signature]

MECH. DES. APP. [Signature]

CHECKED

FINAL APPROVAL

PM-244



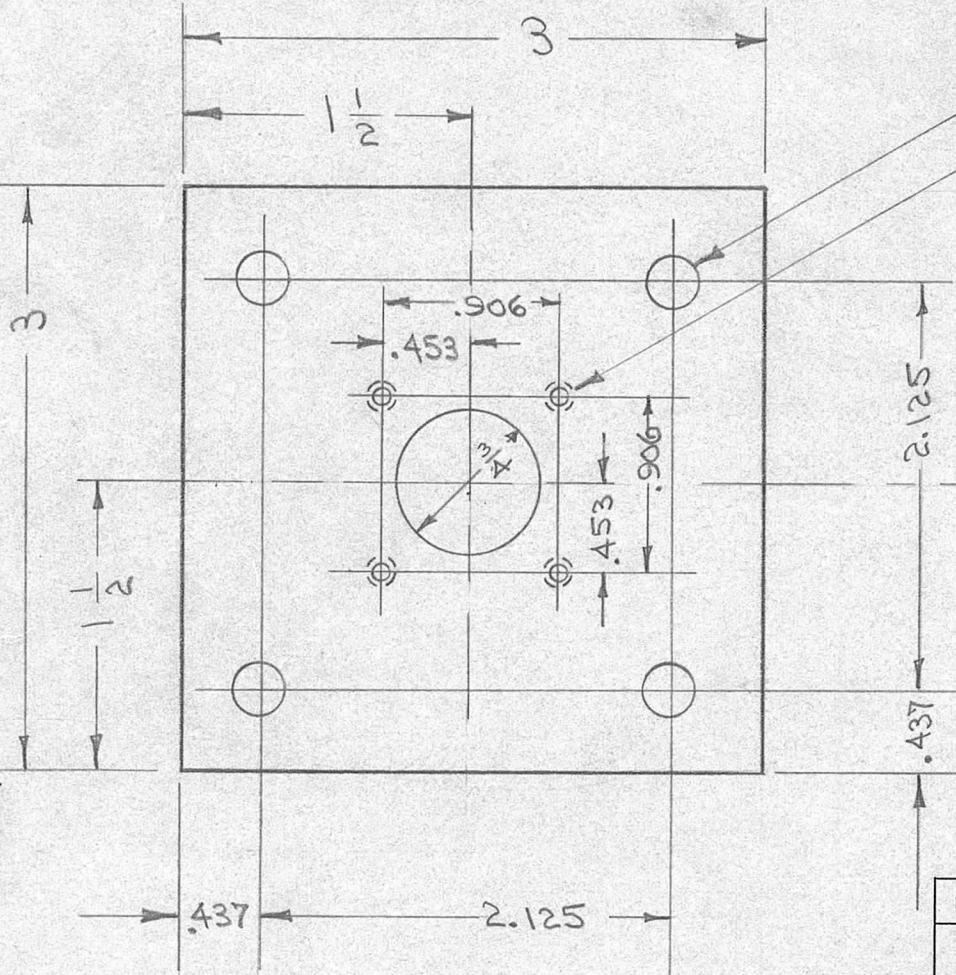
IF IT IS FOUND DESIRABLE TO CHANGE ANY TOLERANCE OR OTHER DETAIL SPECIFIED ON THIS DRAWING NOTIFY THE PURCHASER PROMPTLY.

PM-245 D

MAXIMUM ALLOWABLE TOLERANCES HAVE BEEN DETERMINED AND DEVIATIONS WILL BE CAUSE FOR REJECTION. REMOVE ALL BURRS AND SHARP EDGES

USED ON

MODEL	PROJECT NO.	ASS'Y. NO.	DATE
	259	A-401	6-25



5/16 DIA. . 4 REQ  
DRILL & TAP A-40 4 REQ.

NOTE:  
REMOVE ALL BURRS

REQ.	ITEM	PART NO.	DESCRIPTION	SYMBOL
			.250 SHEET	
			STOCK SIZE	
			ALUMINUM	
			24 ST-3	
			TYPE & TEMPER	
			HEAT TREAT. SPEC.	
			FINISH & SPEC. NO.	
			THE TECHNICAL MATERIEL CORP. MAMARONECK, NEW YORK	
			FLANGE	
			C.D.D.6-25-53	
			DRAWN	ELEC. DES. APP. MECH. DES. APP.
			CHECKED	FINAL APPROVAL
			5-404 YELLOW IRIDITE	
			PM-245	D

ISSUE	ITEM	CHANGED FROM	DATE	CN. NO.	DRAFTS	CHECKER	ENG. APP.
D	2	FINISH & SPEC WAS SIOCAUSTIC-DIP	8-17-62	1076	G.S.		
	1	USED ON CHART RAC-7 DELETED					
C	1	5/16 DIA. WAS 9/32	1-17-61	3934	M.A.F.		
B	1	RAC-7 WAS RAC-7A	3/21/58	2	HAD		
A	1	RAC-7A WAS RAC-7	3/16/56	1	C.W.S.	HAD	AJJ

TOLERANCES		SCALE
ALL OTHERS	DEC. DIM. ± .005 FRAC. DIM. ± 1/64 ANGULAR DIM. ±	DRILL, PUNCH, COMMERCIAL STOCK SIZES AND MANUFACTURERS TOLERANCES ARE NOT INCLUDED.

IF IT IS FOUND DESIRABLE TO CHANGE ANY TOLERANCE OR OTHER DETAIL SPECIFIED ON THIS DRAWING NOTIFY THE PURCHASER PROMPTLY.

PM-246 A

MAXIMUM ALLOWABLE TOLERANCES HAVE BEEN DETERMINED AND DEVIATIONS WILL BE CAUSE FOR REJECTION. REMOVE ALL BURRS AND SHARP EDGES

USED ON

MODEL	PROJECT NO.	ASS'Y. NO.	DATE
R-8	168	A-289	7/27/53
R-10	168	A-289	7/27/53
R-12	168	A-289	7/27/53

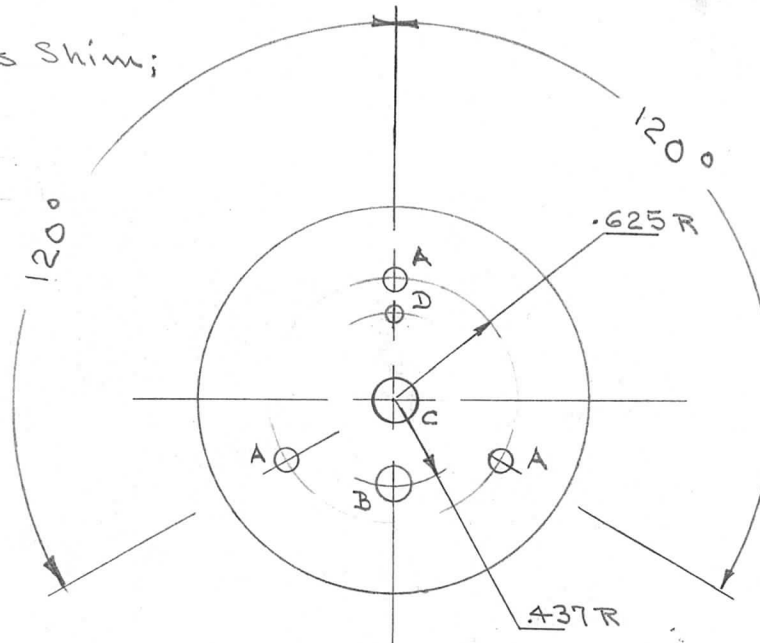
NOTE:

Supply the following with this Shim;

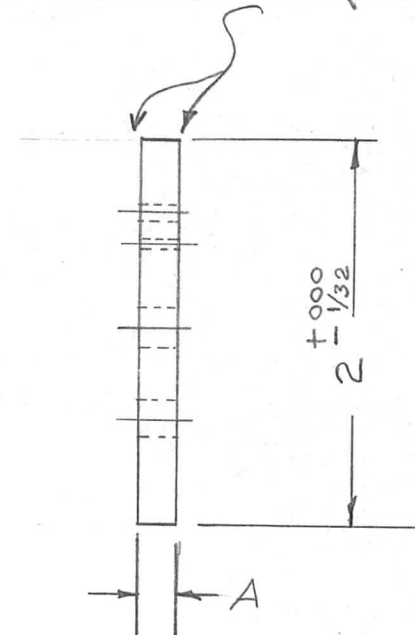
- (3) NTH0440BCG
- (3) LWS 04 LRC
- (3) SCBS0440BC9

REF: A-289

TMC PART NO.	A DIM.	TAPE SIZE
PM 246	3/16	5/8
PM 246-2	5/16	3/4
PM 246-3	7/16	7/8
PM 246-4	9/16	1



Remove Sharp Edges



- A = #30 Drill (.128) 3 Req.
- B = #11 Drill (.191) 1 Req.
- C = .252 ± .001 1 Req.
- D = #34 Drill (.111) 1 Req.

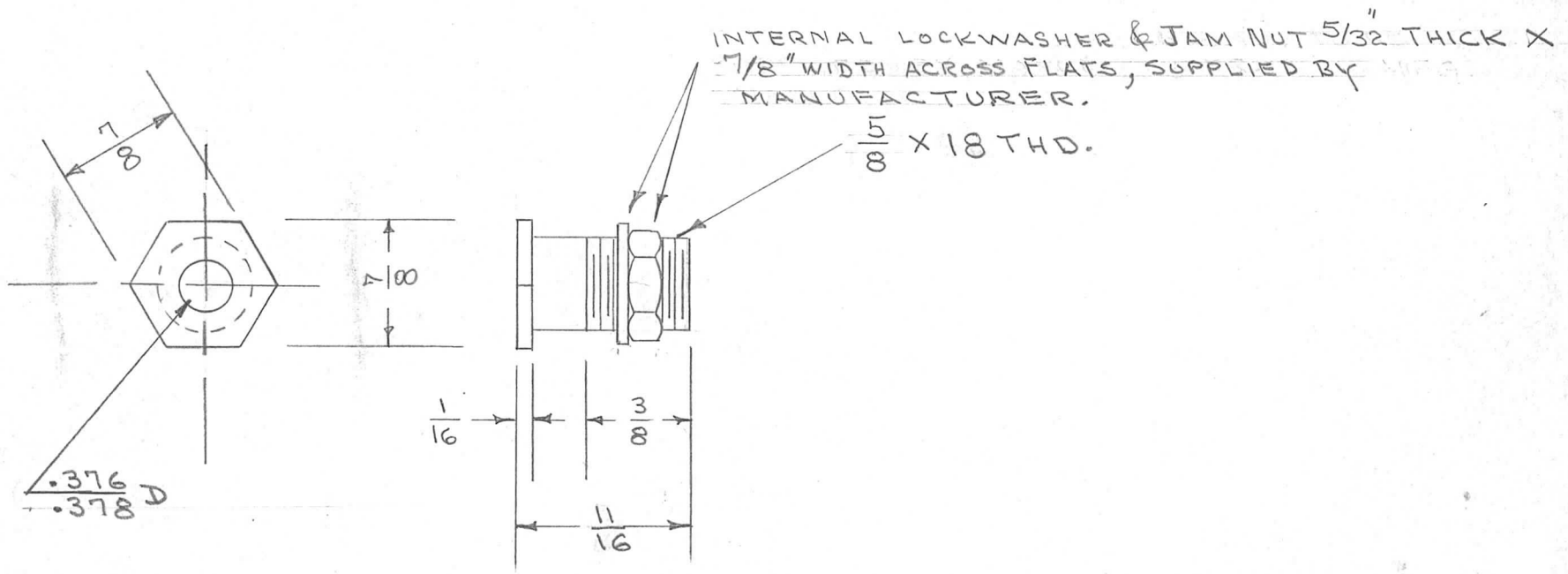
REQ.	ITEM	PART NO.	DESCRIPTION	SYMBOL								
		3/16 Thick	THE TECHNICAL MATERIEL CORP. MAMARONECK. NEW YORK	SHIM								
		STOCK SIZE										
		ALUM OR BRASS										
		MATERIAL	WEIGHT PER PC.									
A		PART. NO. CHT. ADDED 7/11/53 19500 GE JDO SDH/12										
ISSUE	ITEM	CHANGED FROM	DATE	CN. NO.	DRAFTS	CHECKER	ENG. APP.	TYPE & TEMPER				
TOLERANCES								SCALE	FULL			
ALL OTHERS	DEC. DIM. ± .005 FRAC. DIM. ± ANGULAR DIM. ±		DRILL, PUNCH, COMMERCIAL STOCK SIZES AND MANUFACTURERS TOLERANCES ARE NOT INCLUDED.					HEAT TREAT. SPEC.	ANODIZE OR NICKEL PLATE	FINISH & SPEC. NO.	CHECKED	FINAL APPROVAL
										PM-246	A	

IF IT IS FOUND DESIRABLE TO CHANGE ANY TOLERANCE OR OTHER DETAIL SPECIFIED ON THIS DRAWING NOTIFY THE PURCHASER PROMPTLY.

PM-247 C

MAXIMUM ALLOWABLE TOLERANCES HAVE BEEN DETERMINED AND DEVIATIONS WILL BE CAUSE FOR REJECTION. REMOVE ALL BURRS AND SHARP EDGES

REQ. PER UNIT	USED ON			
	MODEL	PROJECT NO.	ASS'Y. NO.	DATE
2	TAC-1	132	A-719 A-717	1-22-54



REQ.	ITEM	PART NO.	DESCRIPTION	SYMBOL
		7/8 HEX ROD	THE TECHNICAL MATERIEL CORP.	
		STOCK SIZE	MAMARONECK. NEW YORK	
		BRASS	BUSHING, w/L.W. & NUT	
		MATERIAL WEIGHT PER PC.		
		FREE TURNING		
		TYPE & TEMPER	C.D.D. 11/17/53	
		HEAT TREAT. SPEC.	DRAWN	ELEC. DES. APP. MECH. DES. APP.
		S-135 NICKLE PLATE	CHECKED	FINAL APPROVAL
		FINISH & SPEC. NO.		PM-247 C

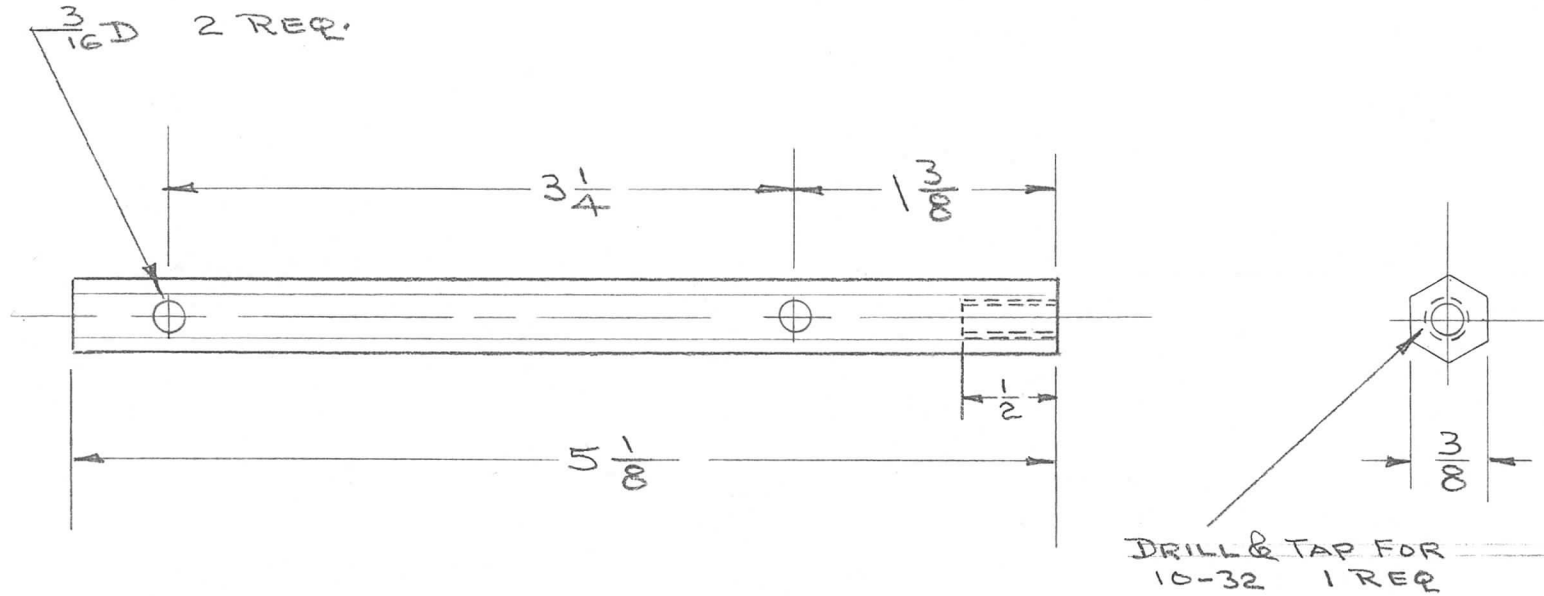
ISSUE	ITEM	CHANGED FROM	DATE	CN. NO.	DRAFTS	CHECKER	ENG. APP.
C	1	MFG. NOTE CLARIFIED	11/22/56	3	FADE	WDE	
B	1	THD. WAS 5/8 X 26	11/9/53	2	C.D.D.	FADE	WDE
A	3	FINISH WAS CAD. PLATE	11/17/53	1	C.D.D.	FADE	WDE
	2	5/8 WAS 3/4					
	1	REDRAWN					

TOLERANCES		SCALE	DRILL, PUNCH, COMMERCIAL STOCK SIZES AND MANUFACTURERS TOLERANCES ARE NOT INCLUDED.
ALL OTHERS	DEC. DIM. ± FRAC. DIM. ± ANGULAR DIM. ±	11/16	





REQ. PER UNIT	USED ON			PM-249	A
	MODEL	ASS'Y. NO.	DATE		
2	XFK	A-684	10-5-53		



ISSUE	ITEM	CHANGED FROM	DATE	CH. NO.	DRAFTS	CHECKER	ENG. APP.	REQ. ITEM	PART NO.	DESCRIPTION	SYMBOL	
									3/8 HEX STOCK SIZE	THE TECHNICAL MATERIEL CORP. MAMARONECK, NEW YORK		
A	1	REDRAWN NO REVISION	4/10/58	1	HLR				ALUMINUM	TRANSFORMER SUPPORT		
TOLERANCES								245-T4		16 10-5-53		
SCALE: $\frac{1}{1}$								TYPE & TEMPER		CHECKED	FINAL APPROVAL	
DEC. DIM. $\pm$								HEAT TREAT. SPEC.				
FRAC. DIM. $\pm$ 1/64								S-101 CAUSTIC DIP				
ANGULAR DIM. $\pm$								5107 LACQUER DIP				
MAXIMUM ALLOWABLE TOLERANCES HAVE BEEN DETERMINED AND ANY DEVIATIONS WILL BE CAUSE FOR REJECTION.								FINISH & SPEC. NO.		ELEC. DES. APP.	MECH. DES. APP.	
REMOVE ALL BURRS AND SHARP EDGES											PM-249	A

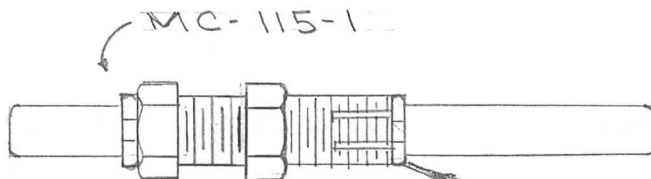
IF IT IS FOUND DESIRABLE TO CHANGE ANY TOLERANCE OR OTHER DETAIL SPECIFIED ON THIS DRAWING NOTIFY THE PURCHASER PROMPTLY.

PM-250 A

MAXIMUM ALLOWABLE TOLERANCES HAVE BEEN DETERMINED AND DEVIATIONS WILL BE CAUSE FOR REJECTION. REMOVE ALL BURRS AND SHARP EDGES

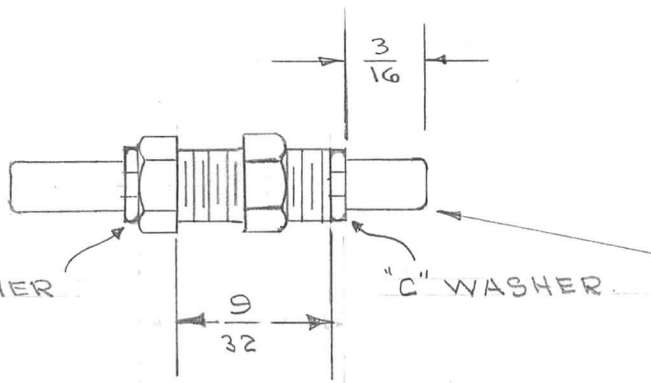
USED ON

MODEL	PROJECT NO.	ASS'Y. NO.	DATE
RSC-1	170	A-560	10-12-53



MODIFICATION PROCEDURE

1. USING A CUTOFF TOOL .038 WIDE, CUT BEARING TO  $9/32$  LENGTH AS SHOWN. IN SAME OPERATION, REGROOVE SHAFT  $1/32$  DEEP FOR "C" WASHER.
2. REMOVE "C" WASHER AND REPLACE IN NEW GROOVE.
3. CUT SHAFT TO  $3/16$  AS SHOWN.



USE MC-115-1

REQ.	ITEM	PART NO.	DESCRIPTION	SYMBOL
			THE TECHNICAL MATERIEL CORP.	
			MAMARONECK. NEW YORK	
			MODIFICATION,	
			PANEL BEARING	
			C.D.D. 10-12-53	
			DRAWN	ELEC. DES. APP. MECH. DES. APP.
			CHECKED	FINAL APPROVAL
				PM-250 A

ISSUE	ITEM	CHANGED FROM	DATE	CN. NO.	DRAFTS	CHECKER	ENG. APP.
A	1	CUTTING LENGTH CHANGED	10/27/53	1	16	JAL	[Signature]

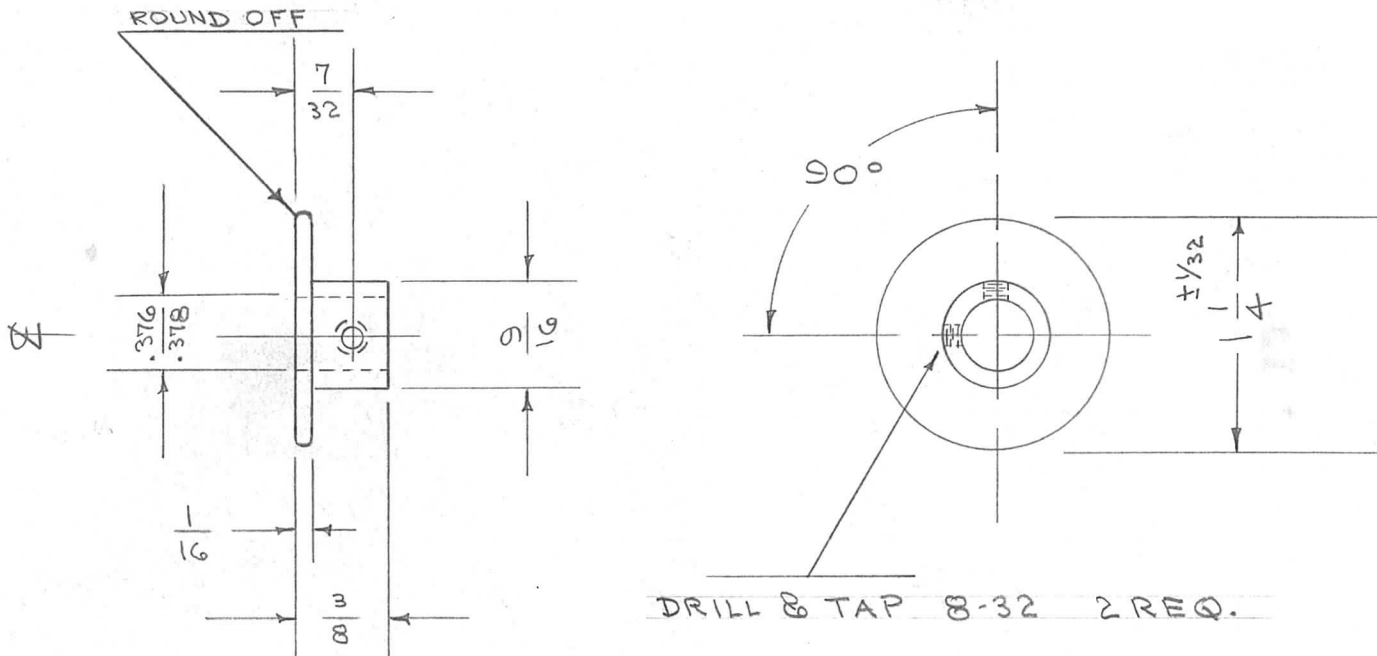
ALL OTHERS	DEC. DIM. $\pm$ FRAC. DIM. $\pm$ ANGULAR DIM. $\pm$	SCALE $\frac{1}{16}$	DRILL, PUNCH, COMMERCIAL STOCK SIZES AND MANUFACTURERS TOLERANCES ARE NOT INCLUDED.
------------	---	----------------------	---

IF IT IS FOUND DESIRABLE TO CHANGE ANY TOLERANCE OR OTHER DETAIL SPECIFIED ON THIS DRAWING NOTIFY THE PURCHASER PROMPTLY.

PM-254 A

MAXIMUM ALLOWABLE TOLERANCES HAVE BEEN DETERMINED AND DEVIATIONS WILL BE CAUSE FOR REJECTION. REMOVE ALL BURRS AND SHARP EDGES

REQ. PER UNIT	MODEL	USED ON		
		PROJECT NO.	ASS'Y. NO.	DATE
2	TAC-1	132	A-646	12-28-53



DIMENSIONS SHOWN ARE AFTER PLATING

REQ.	ITEM	PART NO.	DESCRIPTION	SYMBOL
		1/4 D	THE TECHNICAL MATERIEL CORP. MAMARONECK. NEW YORK	
		STOCK SIZE		
		BRASS	CONTACT BUSHING	
		MATERIAL	TAC-1	
		WEIGHT PER PC.		
		FREE TURNING		
		TYPE & TEMPER	C.I.D.D.	
			APB	WDE
			DRAWN	ELEC. DES. APP.
			APB	WDE
			CHECKED	FINAL APPROVAL
		SILVER PLATE .001		PM-254 A
		FINISH & SPEC. NO.		

A	1	PLATING WAS. .0003	3/2/54	1	16	WDE	WDE
ISSUE	ITEM	CHANGED FROM	DATE	CN. NO.	DRAFTS	CHECKER	ENG. APP.
TOLERANCES			SCALE 1/1				
ALL OTHERS	DEC. DIM. ± FRAC. DIM. ± 1/64 ANGULAR DIM. ± 2°		DRILL, PUNCH, COMMERCIAL STOCK SIZES AND MANUFACTURERS TOLERANCES ARE NOT INCLUDED.				

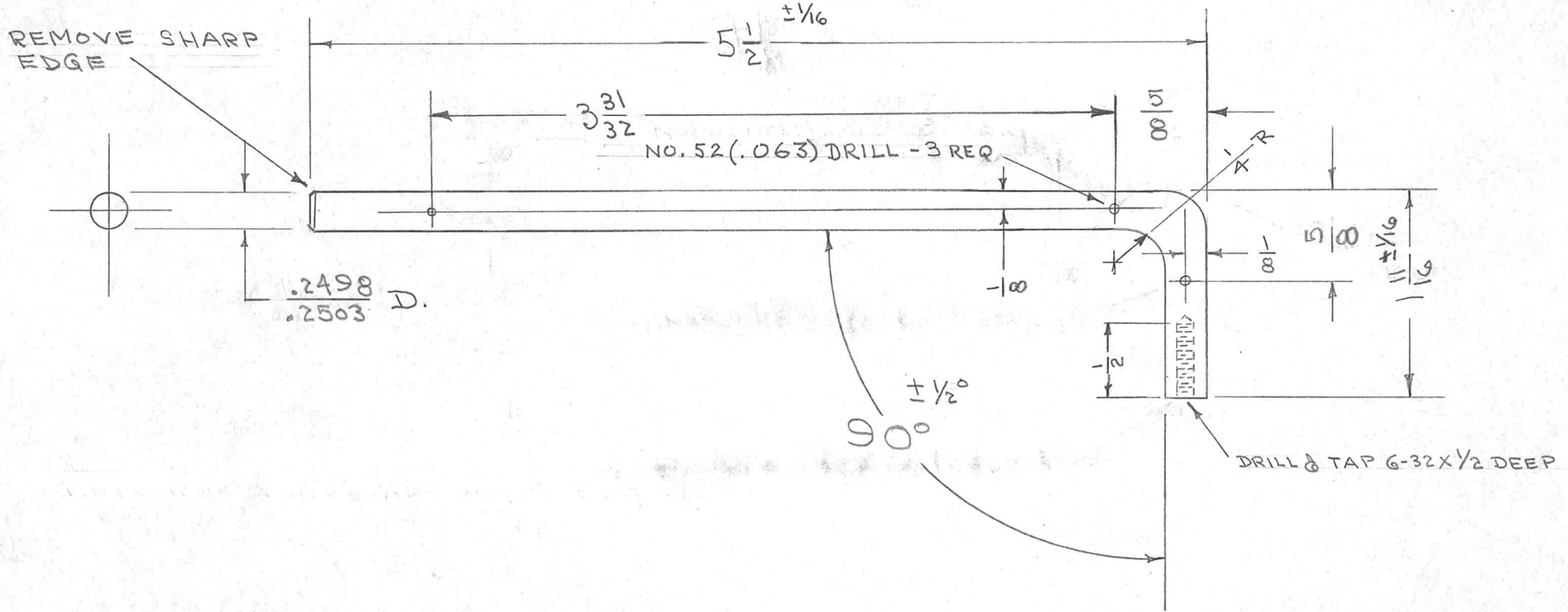


IF IT IS FOUND DESIRABLE TO CHANGE ANY TOLERANCE OR OTHER DETAIL SPECIFIED ON THIS DRAWING NOTIFY THE PURCHASER PROMPTLY.

PM-255 E

MAXIMUM ALLOWABLE TOLERANCES HAVE BEEN DETERMINED AND DEVIATIONS WILL BE CAUSE FOR REJECTION. REMOVE ALL BURRS AND SHARP EDGES

REQ. PER UNIT	MODEL	USED ON		
		PROJECT NO.	ASS'Y. NO.	DATE
2	TAC-1	132	A-646	12-28-53



ISSUE	ITEM	CHANGED FROM	DATE	CN. NO.	DRAFTS	CHECKER	ENG. APP.
E	2	TYPE & Temper WAS Free Turning	9/3/57	5	W.	JAD	WDE
D	1	MAT. WAS NICKEL SILVER ROD		4	JAD	WDE	WDE
C	1	Material was Brass		3	C.D.D.	WDE	WDE
B	1	HOLE ADDED AT 3 31/32		2	C.D.D.	JAD	WDE
A	2	5 1/2 WAS 6 9/16		1	C.D.D.	WDE	WDE
A	1	.063 HOLE REMOVED		1	C.D.D.	WDE	WDE
A	1	5/8 WAS 1 9/32		1	C.D.D.	WDE	WDE

REQ.	ITEM	PART NO.	DESCRIPTION	SYMBOL
		1/4 (.250) DIA ROD	THE TECHNICAL MATERIEL CORP.	
		STOCK SIZE	MAMARONECK. NEW YORK	
		STAINLESS STEEL	WHEEL SHAFT	
		MATERIAL WEIGHT PER PC.	TAC-1	
		AUSTENITIC #303	C.D.D.	
		TYPE & TEMPER	APB	WDE
		HEAT TREAT. SPEC.	DRAWN	ELEC. DES. APP. MECH. DES. APP.
		FINISH & SPEC. NO.	WDE	WDE
			CHECKED	FINAL APPROVAL
				PM-255 E

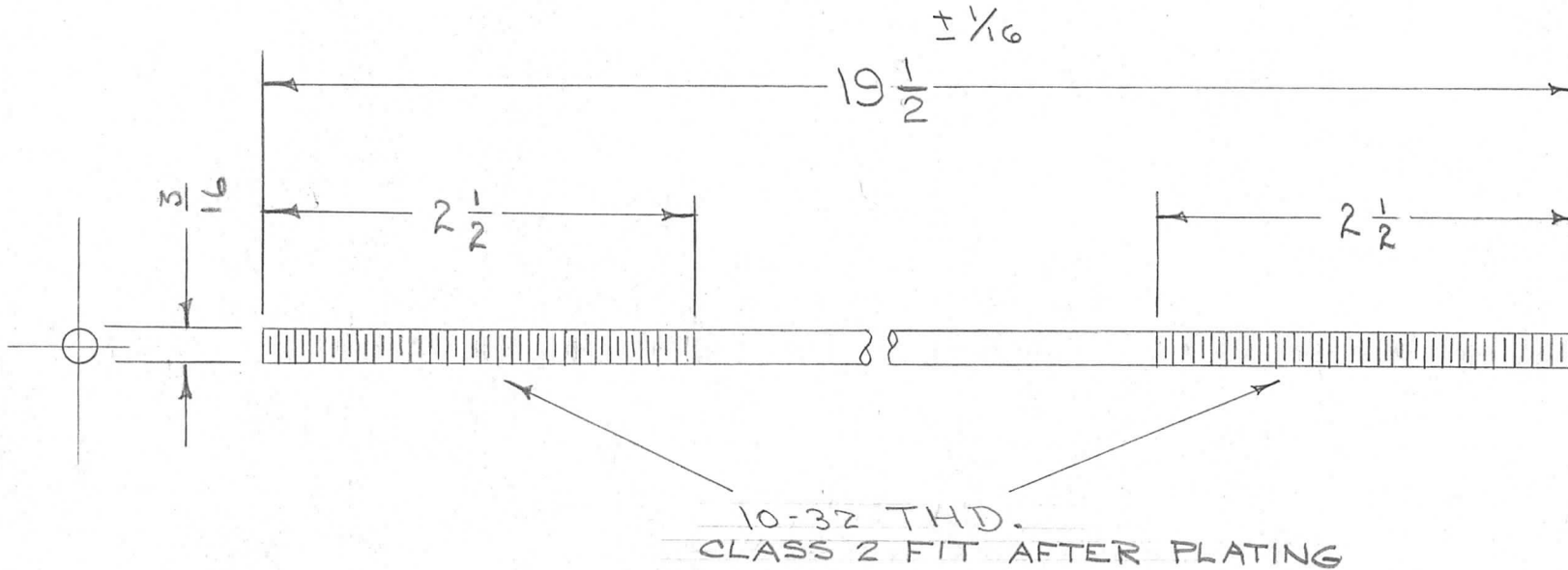
TOLERANCES		SCALE
ALL OTHERS	DEC. DIM. ± FRAC. DIM. ± 1/64 ANGULAR DIM. ± 1/2°	DRILL, PUNCH, COMMERCIAL STOCK SIZES AND MANUFACTURERS TOLERANCES ARE NOT INCLUDED.

IF IT IS FOUND DESIRABLE TO CHANGE ANY TOLERANCE OR OTHER DETAIL SPECIFIED ON THIS DRAWING NOTIFY THE PURCHASER PROMPTLY.

PM-257 D

MAXIMUM ALLOWABLE TOLERANCES HAVE BEEN DETERMINED AND DEVIATIONS WILL BE CAUSE FOR REJECTION. REMOVE ALL BURRS AND SHARP EDGES

REQ. PER UNIT	USED ON			
	MODEL	PROJECT NO.	ASS'Y. NO.	DATE
1	TAC-1	132	A-782	1-27-54



NOTE: DIMENSIONS ARE AFTER PLATING.

REQ.	ITEM	PART NO.	DESCRIPTION			SYMBOL
	3/16 DIA. ROD		THE TECHNICAL MATERIEL CORP.			
	STOCK SIZE		MAMARONECK. NEW YORK			
	BRASS	—    —	WIPER ROD			
	MATERIAL	WEIGHT PER PC.	TAC-1			
	TYPE & TEMPER		C.I.D.D.	APP	WDE	
	HEAT TREAT. SPEC.		DRAWN	ELEC. DES. APP.	MECH. DES. APP.	
	FINISH & SPEC. NO.		FAW	APP	WDE	
			CHECKED	FINAL APPROVAL		
				PM-257	D	

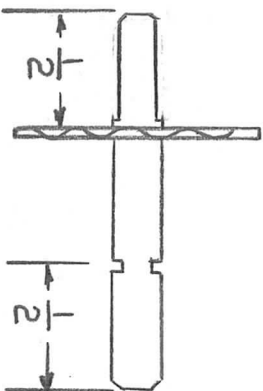
  

ISSUE	ITEM	CHANGED FROM	DATE	CN. NO.	DRAFTS	CHECKER	ENG. APP.
D	1	19 1/2 WAS 19 5/8	4/9/57	4	16	WDE	
C	1	NOTE ADDED	9/1/54	3	C.D.D.	WDE	
B	1	MATERIAL WAS THDED. ROD.	3/10/54	2	C.D.D.	WDE	

TOLERANCES		SCALE
ALL OTHERS	DEC. DIM. ± FRAC. DIM. ± ANGULAR DIM. ±	DRILL, PUNCH, COMMERCIAL STOCK SIZES AND MANUFACTURERS TOLERANCES ARE NOT INCLUDED.

1 PER UNIT



REQUIRED / SWITCH

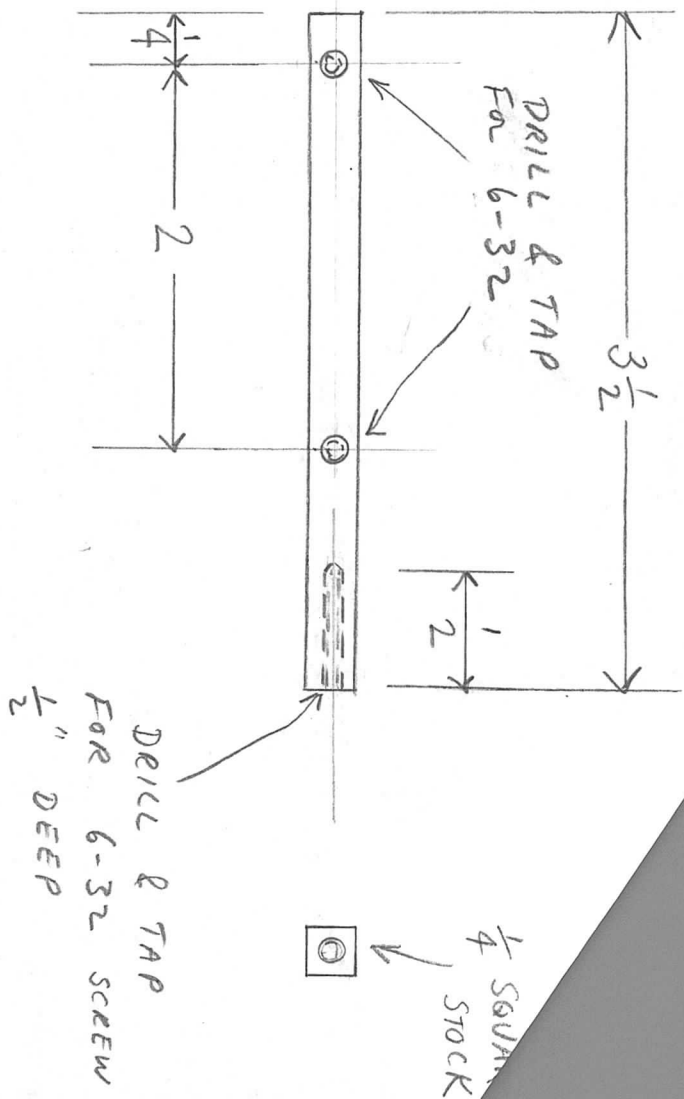
- 2 OAK - 2 POLE 3 POSITION SWITCHES
- 2 4-40 x  $\frac{3}{4}$ " BRASS RD.HD. SCREWS CAD. PL.
- 1 SHAFT CUT TO ABOVE DIMENSIONS FROM OAK KIT

DIRECTIONS:

REMOVE WAFER PLATES FROM TWO OAK SWITCHES.  
 USING FRONT PLATE AND BALL FROM ONE SWITCH  
 ASSEMBLE 2 SECTION - SWITCH 2 POLE 3 POSITION  
 ON EACH SECTION WITH STOPS ON 1 & 3

WAS AMS066  
 1/26/54

DATE	2/16/51	TAK-1 MODIFICATION OF SHAFT FOR S2	THE TECHNICAL MATERIEL CORPORATION MAMARONECK, NEW YORK	
DRN.	H.R.B			
CHKD.				
APPD.	fm	SHEET	OF	NO. PM-258



MATERIAL:  $\frac{1}{4}$  SQUARE BAR ALUM  
 TWO PER UNIT  
 FINISH: ALKALI ETCH & LACQUER

DATE FEB 15, 1951  
 DRN. P. B.  
 CHKD. *oms*  
 APPD. *fm*

TERMINAL BOARD  
 SUPPORTS  
 MODEL TAD-1

THE TECHNICAL MATERIEL  
 CORPORATION  
 MAMARONECK, NEW YORK

WAS AMS065 11/27/53

SHEET OF NO. PM-265



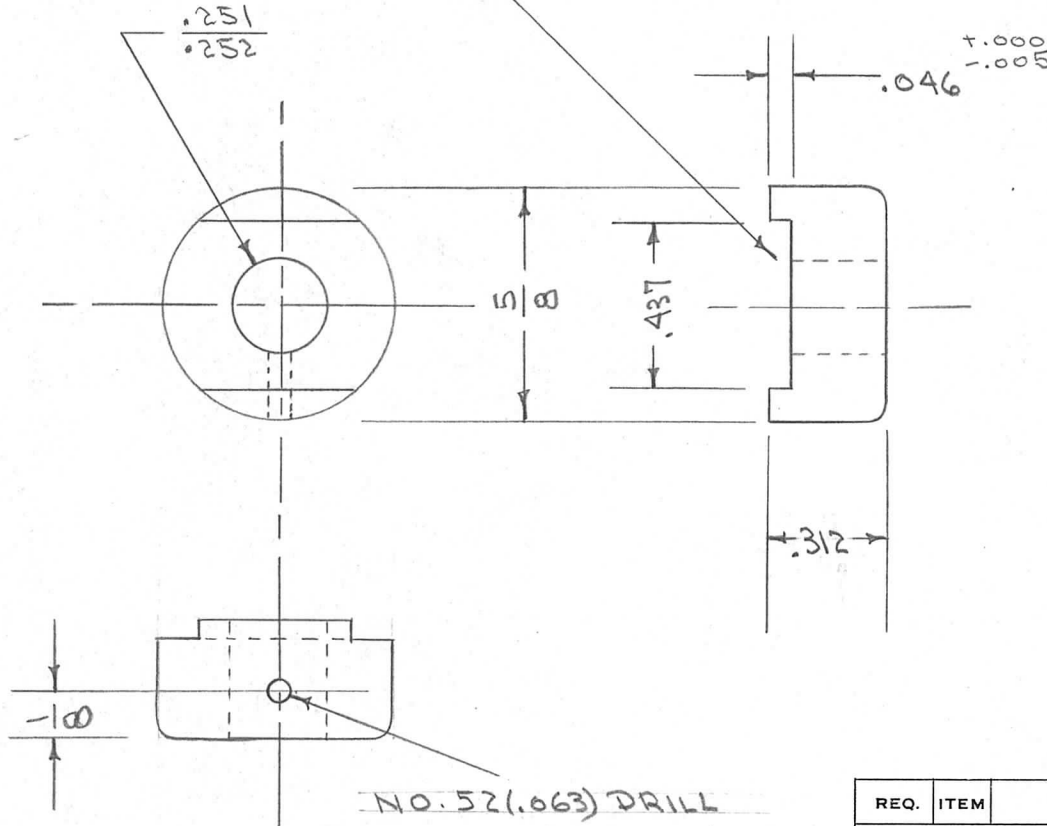
IF IT IS FOUND DESIRABLE TO CHANGE ANY TOLERANCE OR OTHER DETAIL SPECIFIED ON THIS DRAWING NOTIFY THE PURCHASER PROMPTLY.

PM-266

MAXIMUM ALLOWABLE TOLERANCES HAVE BEEN DETERMINED AND DEVIATIONS WILL BE CAUSE FOR REJECTION. REMOVE ALL BURRS AND SHARP EDGES

REQ. PER. UNIT	USED ON			
	MODEL	PROJECT NO.	ASS'Y. NO.	DATE
4	TAC-1	132	A-666 A-667	12-29-53

SLOT TO BE CONCENTRIC WITHIN  $\pm .005$



REQ.	ITEM	PART NO.	DESCRIPTION	SYMBOL
		5/8 D	THE TECHNICAL MATERIEL CORP.	
		STOCK SIZE	MAMARONECK, NEW YORK	
	BRASS	— # —	SWITCH BUSHING	
	MATERIAL	WEIGHT PER PC.	TAC-1	
	FREE TURNING			
	TYPE & TEMPER		C.I.D.	amb
			DRAWN	MECH. DES. APP.
			JAR	WDE
	HEAT TREAT. SPEC.		CMB	WDE
			CHECKED	FINAL APPROVAL
	FINISH & SPEC. NO.			PM-266

ISSUE	ITEM	CHANGED FROM	DATE	CN. NO.	DRAFTS	CHECKER	ENG. APP.

TOLERANCES

SCALE

ALL OTHERS

DEC. DIM.  $\pm .005$   
FRAC. DIM.  $\pm 1/64$   
ANGULAR DIM.  $\pm$

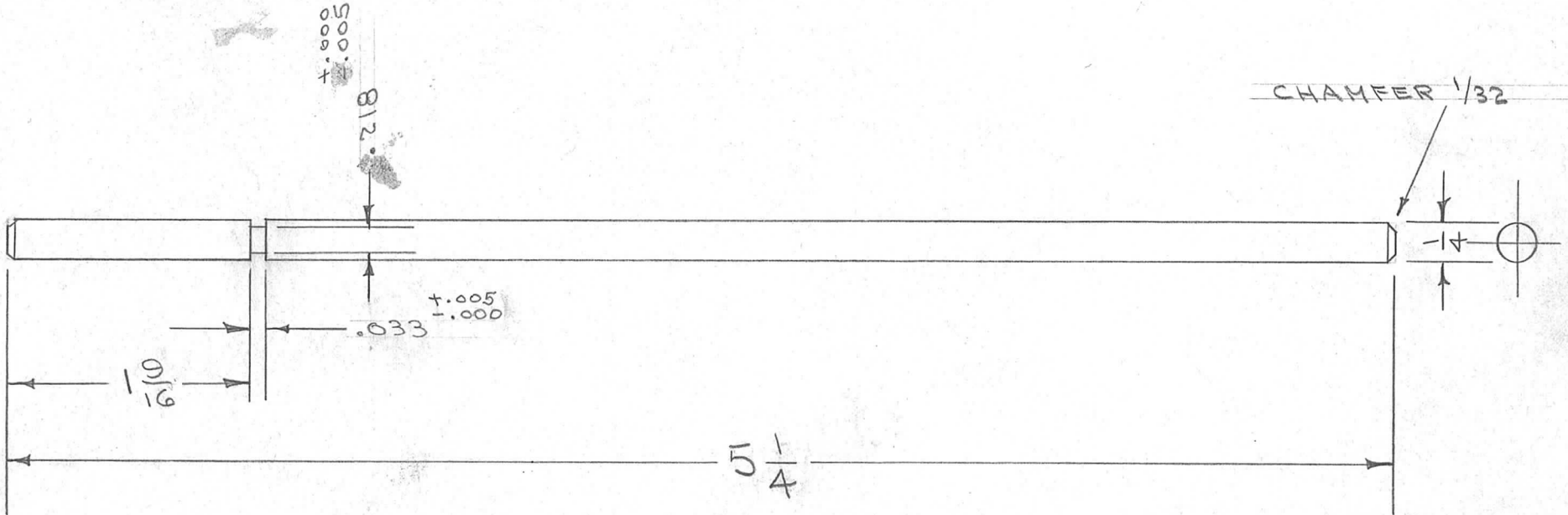
DRILL, PUNCH, COMMERCIAL STOCK SIZES AND MANUFACTURERS TOLERANCES ARE NOT INCLUDED.

IF IT IS FOUND DESIRABLE TO CHANGE ANY TOLERANCE OR OTHER DETAIL SPECIFIED ON THIS DRAWING NOTIFY THE PURCHASER PROMPTLY.

PM-268 A

MAXIMUM ALLOWABLE TOLERANCES HAVE BEEN DETERMINED AND DEVIATIONS WILL BE CAUSE FOR REJECTION. REMOVE ALL BURRS AND SHARP EDGES

REQ. PER. UNIT	USED ON			
	MODEL	PROJECT NO.	ASS'Y. NO.	DATE
1	TAC-1	132	A-666 A-667	12-29-53



REQ.	ITEM	PART NO.	DESCRIPTION	SYMBOL
	Y4 D		THE TECHNICAL MATERIEL CORP. MAMARONECK. NEW YORK	
	BRASS	— # —	SHAFT, SINGLE SWITCH	
	FREE TURNING		TAC-1	
			C.D.D. <i>APP</i>	<i>WOC</i>
			DRAWN <i>JMB</i>	ELEC. DES. APP. <i>APP</i> MECH. DES. APP. <i>WOC</i>
			CHECKED	FINAL APPROVAL
				PM-268 A

ISSUE	ITEM	CHANGED FROM	DATE	CN. NO.	DRAFTS	CHECKER	ENG. APP.
A	1	5/16 WAS 85/8	2/5/54	1	C.D.D.	<i>JMB</i>	<i>WOC</i>

TOLERANCES	SCALE
DEC. DIM. ± FRAC. DIM. ± 1/64 ANGULAR DIM. ±	DRILL, PUNCH, COMMERCIAL STOCK SIZES AND MANUFACTURERS TOLERANCES ARE NOT INCLUDED.

IF IT IS FOUND DESIRABLE TO CHANGE ANY TOLERANCE OR OTHER DETAIL SPECIFIED ON THIS DRAWING NOTIFY THE PURCHASER PROMPTLY.

PM-271

C

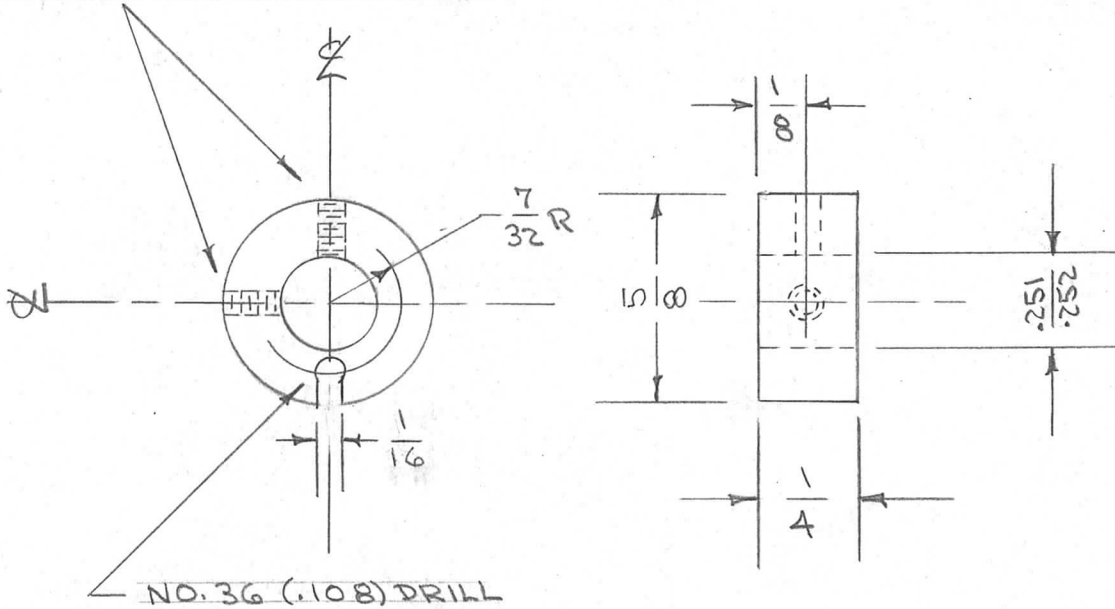
MAXIMUM ALLOWABLE TOLERANCES HAVE BEEN DETERMINED AND DEVIATIONS WILL BE CAUSE FOR REJECTION. REMOVE ALL BURRS AND SHARP EDGES

REQ. PER UNIT

USED ON

REQ. PER UNIT	MODEL	PROJECT NO.	ASS'Y. NO.	DATE
2	TAC-1	132	A-721	12-23-53

DRILL & TAP 6-32 2REQ



REQ.	ITEM	PART NO.	DESCRIPTION	SYMBOL
		5/8 D.	THE TECHNICAL MATERIEL CORP. MAMARONECK. NEW YORK	
		BRASS	COLLAR, GROUND STRAP	
		FREE TURNING	TAC-1	
			C.D.D.	WDC
			DRAWN	ELEC. DES. APP. MECH. DES. APP.
			CHECKED	FINAL APPROVAL
				PM-271 C

ISSUE	ITEM	CHANGED FROM	DATE	CN. NO.	DRAFTS	CHECKER	ENG. APP.
C	1	SLOT WAS 1/32	6/10/54	3	C.D.D.	WDC	WDC
B	1	SLOT MOYED	4/12/54	2	C.D.D.	WDC	WDC
A	1	DIM. CHANGED	3/10/54	1	C.D.D.	WDC	WDC

TOLERANCES

SCALE

ALL OTHERS

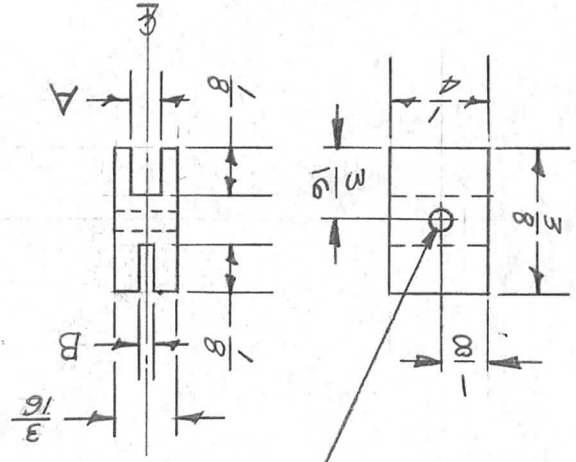
DEC. DIM. ±  
FRAC. DIM. ±  
ANGULAR DIM. ±

DRILL, PUNCH, COMMERCIAL STOCK SIZES AND MANUFACTURERS TOLERANCES ARE NOT INCLUDED.

IF IT IS FOUND DESIRABLE TO CHANGE ANY TOLERANCE OR OTHER DETAIL SPECIFIED ON THIS DRAWING NOTIFY THE PURCHASER PROMPTLY.  
 MAXIMUM ALLOWABLE TOLERANCES HAVE BEEN DETERMINED AND DEVIATIONS WILL BE CAUSE FOR REJECTION.  
 REMOVE ALL BURRS AND SHARP EDGES

TMC PT NO.	AMT. PER UNIT	MODEL	PROJECT NO.	ASSY. NO.	DATE
PM272-1	28	TAC-1	132	A-675 A-677 A-676 A-678	1-8-54
-2	3	ATS-50/70 <sup>TL</sup>	A3645		2-24-58

\*.50 DRILL (.070) DIA, THRU (1)-REQ.



TMC NO.	"A" "B"	1/32	1/32
PM 272-1	5/64	1/32	1/32
PM 272-2	1/16	1/32	1/16
PM 272-3	1/16	1/16	1/16

REQ. ITEM	PART NO.	DESCRIPTION	SYMBOL
		THE TECHNICAL MATERIEL CORP. MAMARONECK, NEW YORK	
		STOCK SIZE	
		MATERIAL	
		WEIGHT PER PC.	
		TYPE & TEMPER	
		DRAWN	
		ELEC. DES. APP.	
		MECH. DES. APP.	
		CHECKED	
		FINAL APPROVAL	

ISSUE ITEM	CHANGED FROM	DATE	CN. NO.	DRAFTS	CHECKER	ENG. APP.
A 1	QVAN. REQ. WAS 30	3/1/54	1	C.D.D.	LOF	LOF
B 1	3/16 WAS 5/32	11/11/54	2		PAID	AMPS
C 1	*50 DRILL ADDED	7/29/64	11944		MMK	MMK
C 2	ASSY NO. A1769 ADDED					
D 1	DIM "A" CHART ADDED	2.13.65	13466		MMK	MMK
D 2	TYPE COLU. ADD. (#2 W. A1769)					
E	ON CHART ADDED "B" DIM # PM 272-3	1-27-76	21349	G.D.T.	Q. Q.	Q. Q.

SCALE TWICE

DRILL, PUNCH, COMMERCIAL STOCK SIZES AND MANUFACTURERS TOLERANCES ARE NOT INCLUDED.

DEC. DIM. ± 1/64  
 FRAC. DIM. ± 1/64  
 ANGULAR DIM. ±

ALL OTHERS

PM-272 E



IF IT IS FOUND DESIRABLE TO CHANGE ANY TOLERANCE OR OTHER DETAIL SPECIFIED ON THIS DRAWING NOTIFY THE PURCHASER PROMPTLY.

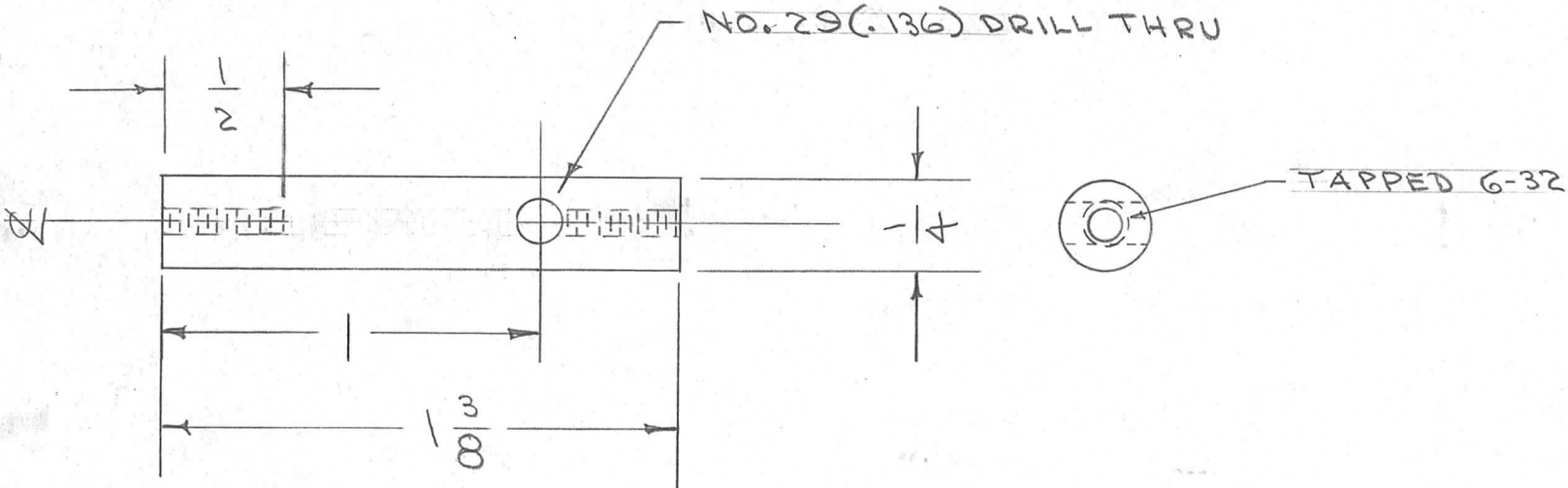
PM-273

MAXIMUM ALLOWABLE TOLERANCES HAVE BEEN DETERMINED AND DEVIATIONS WILL BE CAUSE FOR REJECTION. REMOVE ALL BURRS AND SHARP EDGES

REQ  
PER  
UNIT

USED ON

MODEL	PROJECT NO.	ASS'Y. NO.	DATE
TAC-1	132	A-688	1-8-54



REQ.	ITEM	PART NO.	DESCRIPTION	SYMBOL
			THE TECHNICAL MATERIEL CORP. MAMARONECK. NEW YORK	
		STOCK SIZE		
	BRASS	— # —	POST	
	MATERIAL	WEIGHT PER PC.	TAC-1	
			C.D.D.	
			DRAWN	
			ELEC. DES. APP.	
			CHECKED	
			MECH. DES. APP.	
			HEAT TREAT. SPEC.	
			FINISH & SPEC. NO.	
			FINAL APPROVAL	
				PM-273

ISSUE	ITEM	CHANGED FROM	DATE	CN. NO.	DRAFTS	CHECKER	ENG. APP.

TOLERANCES

SCALE — # —

ALL OTHERS  
DEC. DIM. ±  
FRAC. DIM. ±  
ANGULAR DIM. ±

DRILL, PUNCH, COMMERCIAL STOCK SIZES AND MANUFACTURERS TOLERANCES ARE NOT INCLUDED.

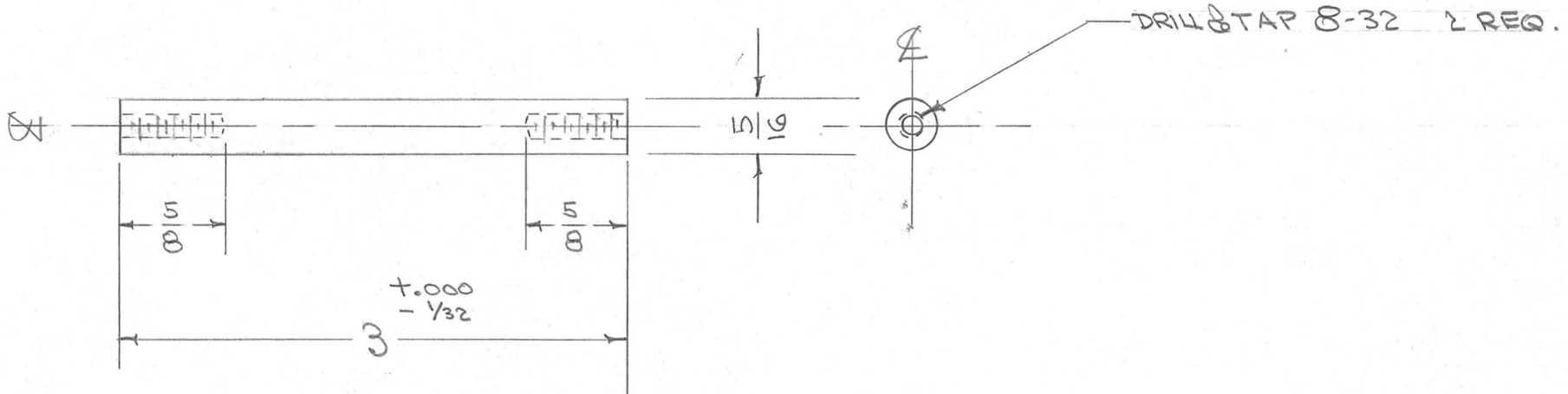


IF IT IS FOUND DESIRABLE TO CHANGE ANY TOLERANCE OR OTHER DETAIL SPECIFIED ON THIS DRAWING NOTIFY THE PURCHASER PROMPTLY.

PM-276

MAXIMUM ALLOWABLE TOLERANCES HAVE BEEN DETERMINED AND DEVIATIONS WILL BE CAUSE FOR REJECTION. REMOVE ALL BURRS AND SHARP EDGES

PART NO. REV. SIZE	USED ON			
	MODEL	PROJECT NO.	ASS'Y. NO.	DATE
2	TAC-1	132	A-715	1-20-54



REQ.	ITEM	PART NO.	DESCRIPTION	SYMBOL
		5/16 DIA.	THE TECHNICAL MATERIEL CORP. MAMARONECK, NEW YORK	
		STOCK SIZE		
		BRASS	SUPPORT, PANEL	
		MATERIAL	TAC-1	
		FREE TURNING		
		TYPE & TEMPER		
		HEAT TREAT. SPEC.		
		S-105 CAD. PLATE		
		FINISH & SPEC. NO.		

ISSUE	ITEM	CHANGED FROM	DATE	CN. NO.	DRAFTS	CHECKER	ENG. APP.
TOLERANCES			SCALE				
ALL OTHERS			DRILL, PUNCH, COMMERCIAL STOCK SIZES AND MANUFACTURERS TOLERANCES ARE NOT INCLUDED.				
DEC. DIM. ±							
FRAC. DIM. ± 1/64							
ANGULAR DIM. ±							

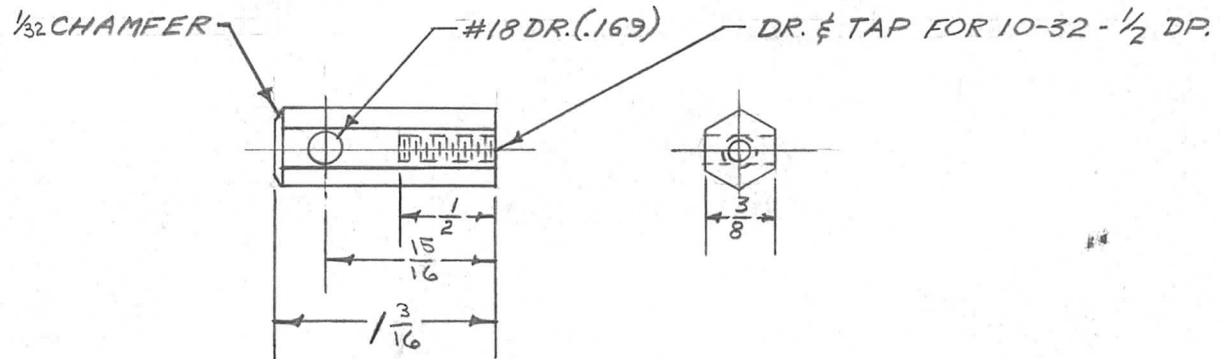
CAD. DRAWN: *CPB*  
 ELEC. DES. APP.: *WDE*  
 MECH. DES. APP.: *WDE*  
 CHECKED: *WDE*  
 FINAL APPROVAL: *CPB*  
 PM-276

IF IT IS FOUND DESIRABLE TO CHANGE ANY TOLERANCE OR OTHER DETAIL SPECIFIED ON THIS DRAWING NOTIFY THE PURCHASER PROMPTLY.

PM-277 A

MAXIMUM ALLOWABLE TOLERANCES HAVE BEEN DETERMINED AND DEVIATIONS WILL BE CAUSE FOR REJECTION. REMOVE ALL BURRS AND SHARP EDGES

USED ON				
AMT. PER UNIT	MODEL	PROJECT NO.	ASS'Y. NO.	DATE
1	TAC-1	132	A-718	1-12-54



REQ.	ITEM	PART NO.	DESCRIPTION	SYMBOL
		3/8 HEX.	THE TECHNICAL MATERIEL CORP.	
		STOCK SIZE	MAMARONECK, NEW YORK	
		BRASS	SPARK BASE	
		MATERIAL	TAC-1	
		WEIGHT PER PC.		
		FREE TURNING		
		TYPE & TEMPER		
		HEAT TREAT. SPEC.		
		NICKEL PLATE S-135		
		FINISH & SPEC. NO.		

ISSUE	ITEM	CHANGED FROM	DATE	CN. NO.	DRAFTS	CHECKER	ENG. APP.
A	1	15/16 WAS 7/8 / 13/16 WAS 1/8	3/10/54	1	C.D.D	JADe	WJC

TOLERANCES		SCALE FULL
ALL OTHERS	DEC. DIM. ± FRAC. DIM. ± ANGULAR DIM. ±	DRILL, PUNCH, COMMERCIAL STOCK SIZES AND MANUFACTURERS TOLERANCES ARE NOT INCLUDED.

6	APB	WJC
DRAWN	ELEC. DES. APP.	MECH. DES. APP.
JADe	APB	WJC
CHECKED	FINAL APPROVAL	
	PM-277	A

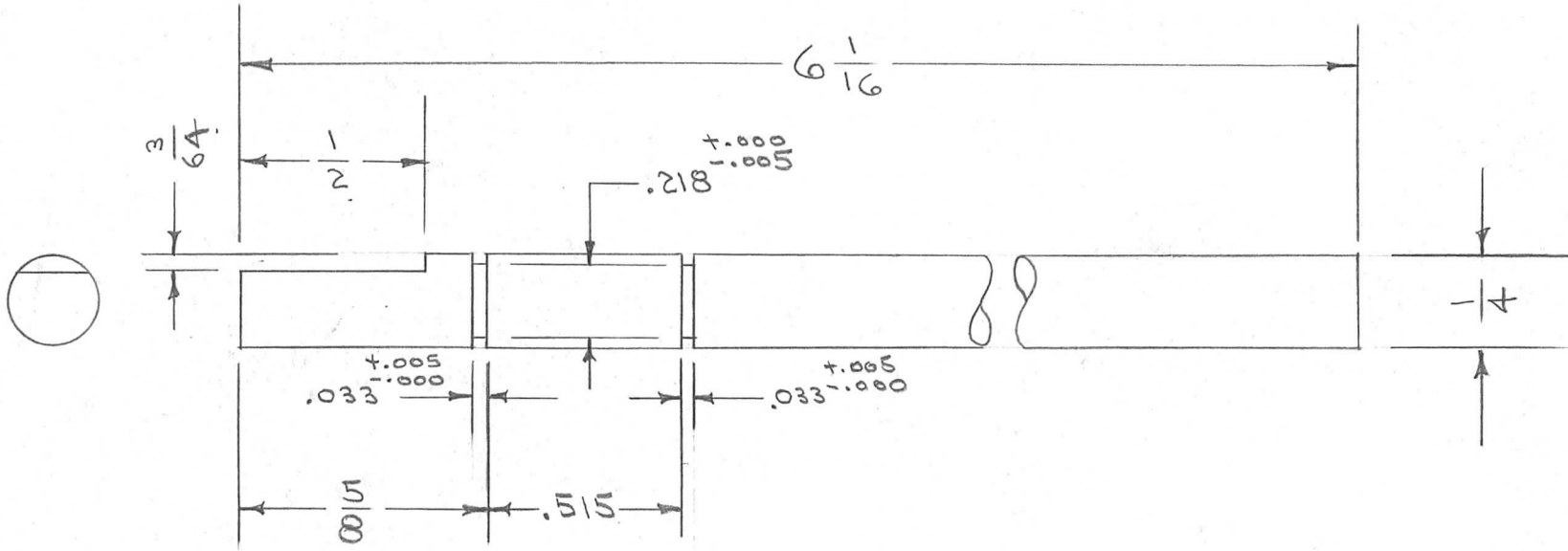


IF IT IS FOUND DESIRABLE TO CHANGE ANY TOLERANCE OR OTHER DETAIL SPECIFIED ON THIS DRAWING NOTIFY THE PURCHASER PROMPTLY.

PM-278 A

MAXIMUM ALLOWABLE TOLERANCES HAVE BEEN DETERMINED AND DEVIATIONS WILL BE CAUSE FOR REJECTION. REMOVE ALL BURRS AND SHARP EDGES

REQ PER UNIT	USED ON			
	MODEL	PROJECT NO.	ASS'Y. NO.	DATE
2	TAC-1	132	A-714	12-17-53



REQ.	ITEM	PART NO.	DESCRIPTION	SYMBOL
		YAD.	THE TECHNICAL MATERIEL CORP.	
		STOCK SIZE	MAMARONECK. NEW YORK	
		BRASS.	EXTENSION SHAFT	
		MATERIAL WEIGHT PER PC.	COUPLING & BAND SWITCH	
			C.D.D.	
		TYPE & TEMPER	ARB	WOC
			DRAWN	ELEC. DES. APP. MECH. DES. APP.
		HEAT TREAT. SPEC.	WOC	ARB
			CHECKED	FINAL APPROVAL
		S-105 CAD. PLATE		PM-278 A
		FINISH & SPEC. NO.		

ISSUE	ITEM	CHANGED FROM	DATE	CN. NO.	DRAFTS	CHECKER	ENG. APP.
A	1	DIMENSIONS CHGD.	3/19/54	1	C.D.D.	WOC	WOC

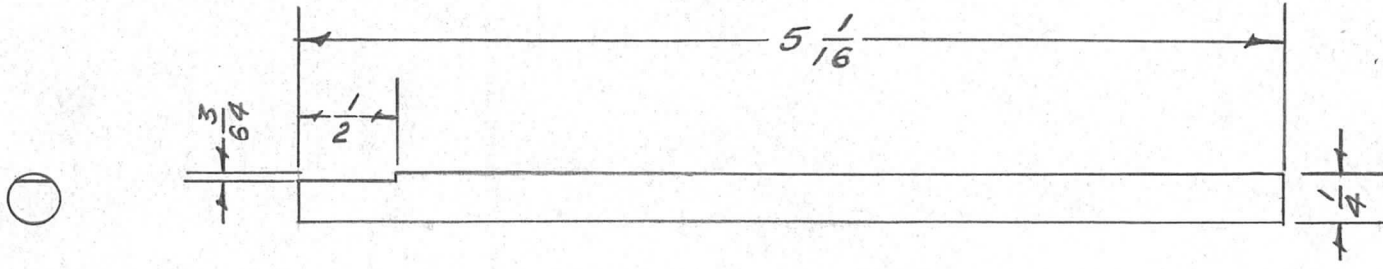
TOLERANCES	SCALE
ALL OTHERS DEC. DIM. ± FRAC. DIM. ± ANGULAR DIM. ±	DRILL, PUNCH, COMMERCIAL STOCK SIZES AND MANUFACTURERS TOLERANCES ARE NOT INCLUDED.

IF IT IS FOUND DESIRABLE TO CHANGE ANY TOLERANCE OR OTHER DETAIL SPECIFIED ON THIS DRAWING NOTIFY THE PURCHASER PROMPTLY.

PM-279

MAXIMUM ALLOWABLE TOLERANCES HAVE BEEN DETERMINED AND DEVIATIONS WILL BE CAUSE FOR REJECTION. REMOVE ALL BURRS AND SHARP EDGES

USED ON				
AMT. PER UNIT	MODEL	PROJECT NO.	ASS'Y. NO.	DATE
1	TAC-1	132	A-579	1-29-54



REQ.	ITEM	PART NO.	DESCRIPTION	SYMBOL
		1/4 D.	THE TECHNICAL MATERIEL CORP.	
		STOCK SIZE	MAMARONECK. NEW YORK	
		BRASS	EXTENSION SHAFT,	
		MATERIAL	TUNING CAP. - TAC-1	
		WEIGHT PER PC.		
		TYPE & TEMPER	45 5-7-54	
		HEAT TREAT. SPEC.	ARB	WDE
		FINISH & SPEC. NO.	CADMIUM PLATE 5-105	

ISSUE	ITEM	CHANGED FROM	DATE	CN. NO.	DRAFTS	CHECKER	ENG. APP.
TOLERANCES			SCALE $\frac{1}{16}$				
ALL OTHERS	DEC. DIM. $\pm$ FRAC. DIM. $\pm$ ANGULAR DIM. $\pm$		DRILL, PUNCH, COMMERCIAL STOCK SIZES AND MANUFACTURERS TOLERANCES ARE NOT INCLUDED.				

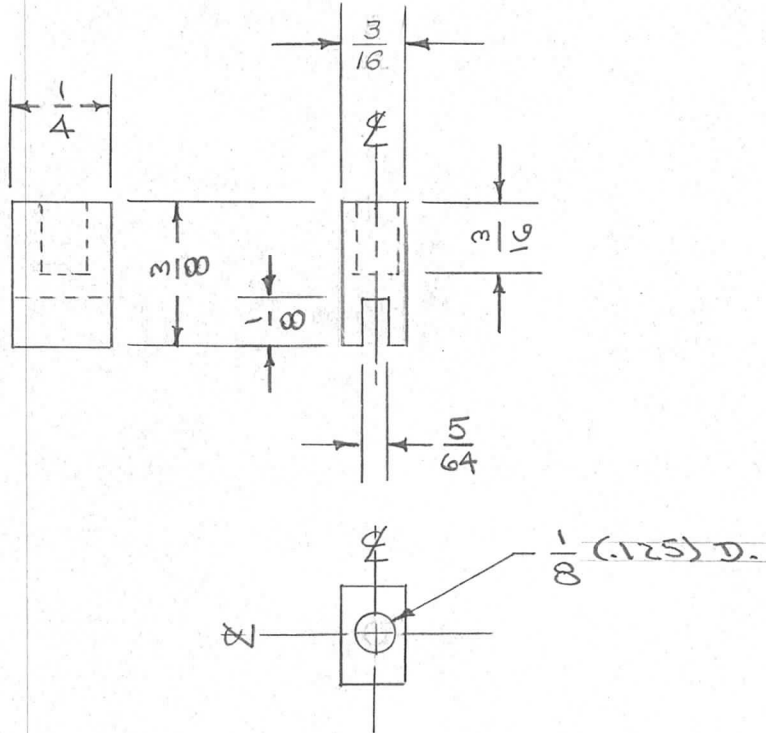
DRAWN: *JAR*  
 ELEC. DES. APP.: *ARB*  
 MECH. DES. APP.: *WDE*  
 CHECKED: *JAR*  
 FINAL APPROVAL: *ARB*  
 PM-279

IF IT IS FOUND DESIRABLE TO CHANGE ANY TOLERANCE OR OTHER DETAIL SPECIFIED ON THIS DRAWING NOTIFY THE PURCHASER PROMPTLY.

PM-281 A

MAXIMUM ALLOWABLE TOLERANCES HAVE BEEN DETERMINED AND DEVIATIONS WILL BE CAUSE FOR REJECTION. REMOVE ALL BURRS AND SHARP EDGES

REQ. PER UNIT	USED ON			
	MODEL	PROJECT NO.	ASS'Y. NO.	DATE
3	TAC-1	132	A-677 A-678	1-8-54



REQ.	ITEM	PART NO.	DESCRIPTION	SYMBOL
			THE TECHNICAL MATERIEL CORP. MAMARONECK, NEW YORK	
		STOCK SIZE	COIL LUG	
		MATERIAL	TAC-1	
		WEIGHT PER PC.		
		TYPE & TEMPER	C.I.D.D	
		HEAT TREAT. SPEC.	APP	
		FINISH & SPEC. NO.	WDC	
TOLERANCES			CHECKED	FINAL APPROVAL
SCALE				
DRILL, PUNCH, COMMERCIAL STOCK SIZES AND MANUFACTURERS TOLERANCES ARE NOT INCLUDED.				
ALL OTHERS				
DEC. DIM. ±				
FRAC. DIM. ±				
ANGULAR DIM. ±				
			PM-281	A

A	1	3/16 WAS 5/32	11/16/55	1	PB	JAC	APP
ISSUE	ITEM	CHANGED FROM	DATE	CN. NO.	DRAFTS	CHECKER	ENG. APP.

IF IT IS FOUND DESIRABLE TO CHANGE ANY TOLERANCE OR OTHER DETAIL SPECIFIED ON THIS DRAWING NOTIFY THE PURCHASER PROMPTLY.

PM-282

MAXIMUM ALLOWABLE TOLERANCES HAVE BEEN DETERMINED AND DEVIATIONS WILL BE CAUSE FOR REJECTION. REMOVE ALL BURRS AND SHARP EDGES

REQ. PER UNIT

USED ON

4

MODEL

KS-85-X

PROJECT NO.

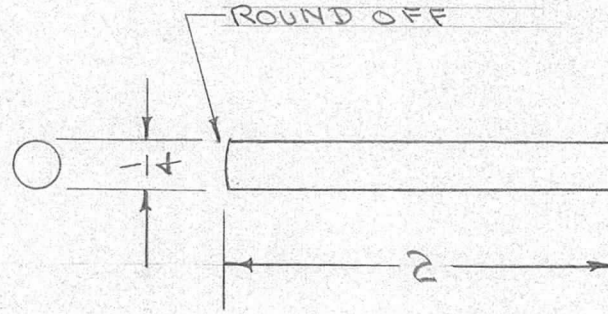
J-227

ASS'Y. NO.

A-500

DATE

4-26-54



REQ.	ITEM	PART NO.	DESCRIPTION	SYMBOL
		1/4 ROD	THE TECHNICAL MATERIEL CORP. MAMARONECK, NEW YORK	
		STOCK SIZE		
		STEEL	POST, SPLICING JIG	
		MATERIAL		
		WEIGHT PER PC.		
		TYPE & TEMPER	ADD. 4-26-54	
			DRAWN	ELEC. DES. APP. MECH. DES. APP.
		HEAT TREAT. SPEC.	CHECKED	FINAL APPROVAL
		FINISH & SPEC. NO.		PM-282

ISSUE	ITEM	CHANGED FROM	DATE	CN. NO.	DRAFTS	CHECKER	ENG. APP.
TOLERANCES			SCALE				
ALL OTHERS	DEC. DIM. ±	FRAC. DIM. ±	DRILL, PUNCH, COMMERCIAL STOCK SIZES AND MANUFACTURERS TOLERANCES ARE NOT INCLUDED.				
	ANGULAR DIM. ±						



IF IT IS FOUND DESIRABLE TO CHANGE ANY TOLERANCE OR OTHER DETAIL SPECIFIED ON THIS DRAWING NOTIFY THE PURCHASER PROMPTLY.

PM-283

MAXIMUM ALLOWABLE TOLERANCES HAVE BEEN DETERMINED AND DEVIATIONS WILL BE CAUSE FOR REJECTION. REMOVE ALL BURRS AND SHARP EDGES

REQ  
PER  
UNIT

USED ON

MODEL

PROJECT NO.

ASS'Y. NO.

DATE

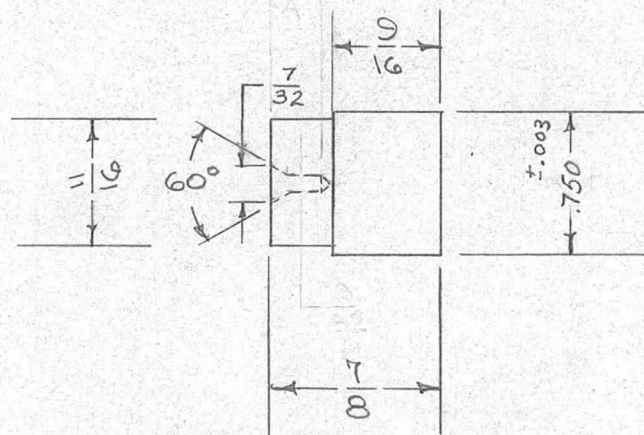
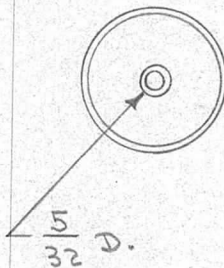
1

K5-85-x

J-227

A-501

4-27-54



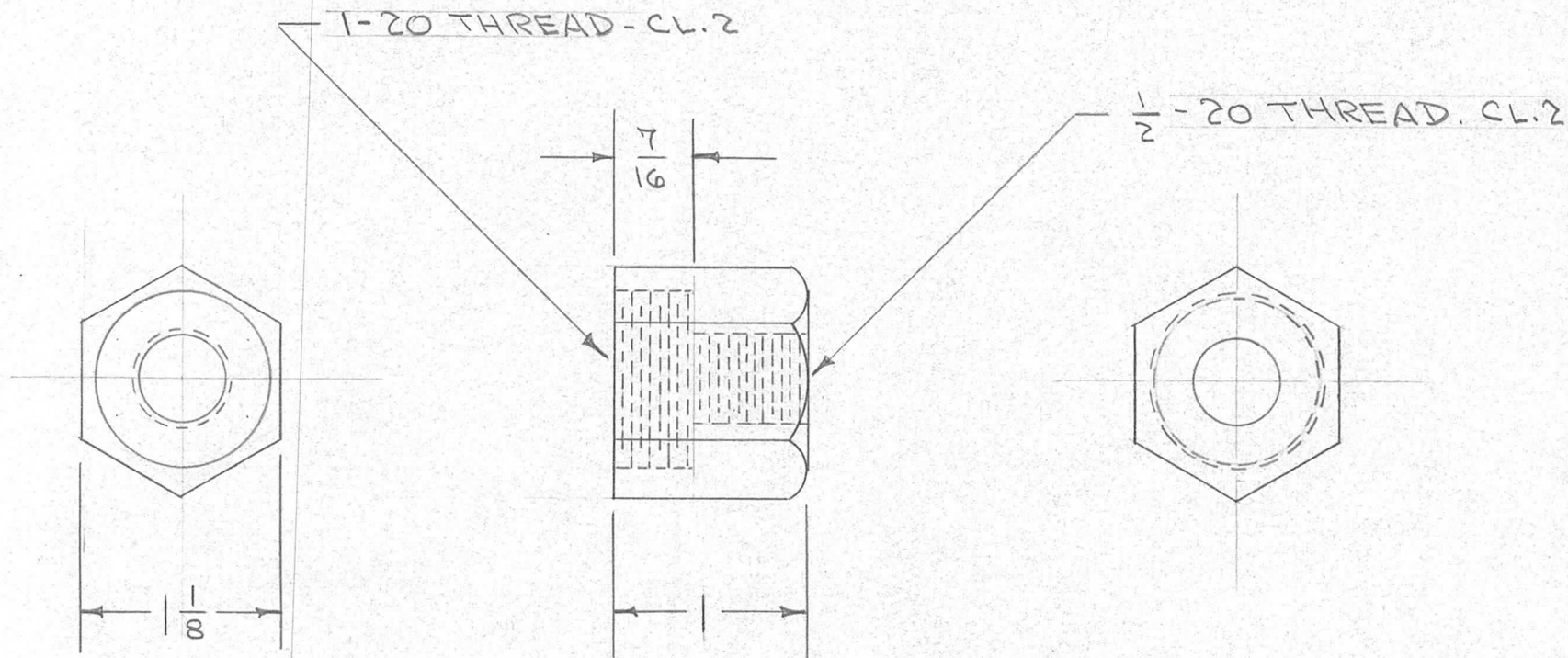
REQ.	ITEM	PART NO.	DESCRIPTION	SYMBOL
		3/4 D.	THE TECHNICAL MATERIEL CORP. MAMARONECK, NEW YORK	
		STOCK SIZE		
		STAINLESS STEEL	PLUNGER SEAT, GUN	
		MATERIAL		
		WEIGHT PER PC.		
		NO 303		
		TYPE & TEMPER	C.D.D. A-27-54	
		HEAT TREAT. SPEC.		
		FINISH & SPEC. NO.		
ISSUE			DRAWN	ELEC. DES. APP.
ITEM			MECH. DES. APP.	
CHANGED FROM			CHECKED	FINAL APPROVAL
DATE				
CN. NO.				
DRAFTS				
CHECKER				
ENG. APP.				
TOLERANCES				
SCALE				
ALL OTHERS				
DEC. DIM. ±				
FRAC. DIM. ±				
ANGULAR DIM. ±				
DRILL, PUNCH, COMMERCIAL STOCK SIZES AND MANUFACTURERS TOLERANCES ARE NOT INCLUDED.				
				PM-283

IF IT IS FOUND DESIRABLE TO CHANGE ANY TOLERANCE OR OTHER DETAIL SPECIFIED ON THIS DRAWING NOTIFY THE PURCHASER PROMPTLY.

PM-285

MAXIMUM ALLOWABLE TOLERANCES HAVE BEEN DETERMINED AND DEVIATIONS WILL BE CAUSE FOR REJECTION. REMOVE ALL BURRS AND SHARP EDGES

REQ. PER UNIT	USED ON			
	MODEL	PROJECT NO.	ASS'Y. NO.	DATE
1	KS-85-X	J-227	A-501	4-27-54



REQ.	ITEM	PART NO.	DESCRIPTION	SYMBOL
	HEX. ROD		THE TECHNICAL MATERIEL CORP.	
	STOCK SIZE		MAMARONECK. NEW YORK	
	BRASS	— II —	CAP, BARREL	
	MATERIAL	WEIGHT PER PC.		
	FREE TURNING			
	TYPE & TEMPER		C.D.D. 4-27-54	
	II		DRAWN	ELEC. DES. APP. MECH. DES. APP.
	HEAT TREAT. SPEC.		FAO	
	FINISH & SPEC. NO.		CHECKED	FINAL APPROVAL
				PM-285

ISSUE	ITEM	CHANGED FROM	DATE	CN. NO.	DRAFTS	CHECKER	ENG. APP.
TOLERANCES			SCALE — II —				
ALL OTHERS	DEC. DIM. $\pm$ FRAC. DIM. $\pm \frac{1}{32}$ ANGULAR DIM. $\pm$		DRILL, PUNCH, COMMERCIAL STOCK SIZES AND MANUFACTURERS TOLERANCES ARE NOT INCLUDED.				

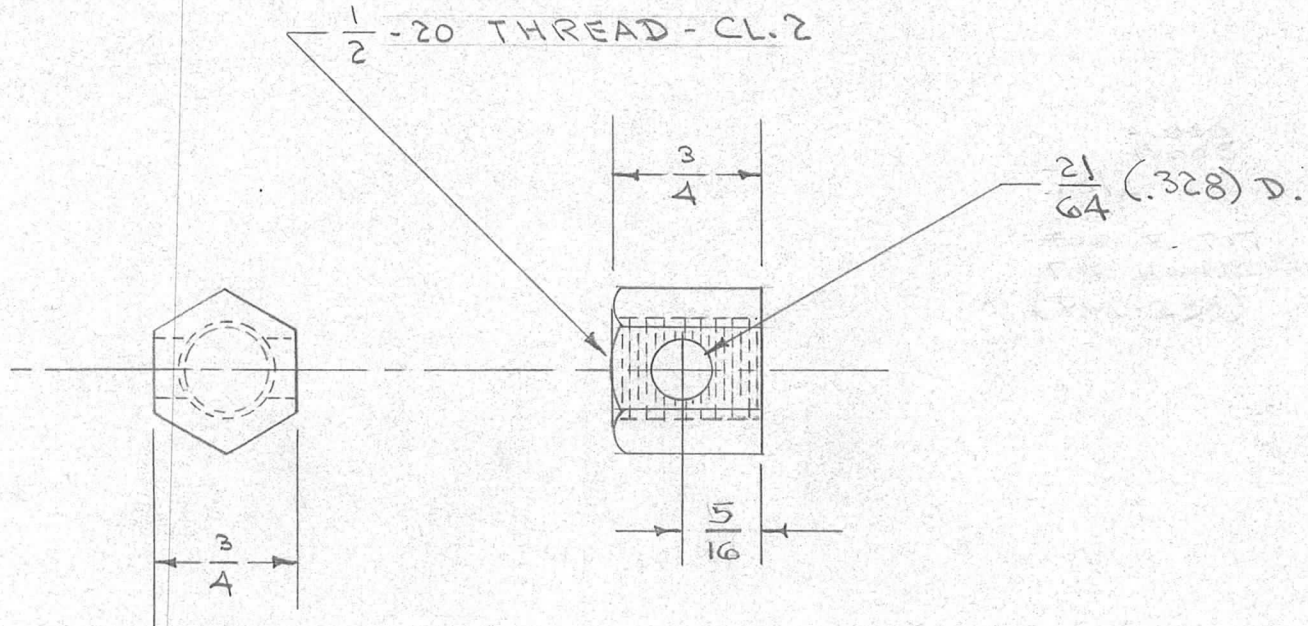


IF IT IS FOUND DESIRABLE TO CHANGE ANY TOLERANCE OR OTHER DETAIL SPECIFIED ON THIS DRAWING NOTIFY THE PURCHASER PROMPTLY.

PM-287

MAXIMUM ALLOWABLE TOLERANCES HAVE BEEN DETERMINED AND DEVIATIONS WILL BE CAUSE FOR REJECTION. REMOVE ALL BURRS AND SHARP EDGES

REQ PER UNIT	USED ON			
	MODEL	PROJECT NO.	ASS'Y. NO.	DATE
1	KS-85-X	J-227	A-501	4-27-54



REQ.	ITEM	PART NO.	DESCRIPTION	SYMBOL
	HEX. ROD		THE TECHNICAL MATERIEL CORP. MAMARONECK, NEW YORK	
	STOCK SIZE			
	BRASS		LOCK, HANDLE	
	MATERIAL	WEIGHT PER PC.		
	FREE TURNING			
	TYPE & TEMPER		C.D.D. 4-27-54	
			DRAWN	ELEC. DES. APP. MECH. DES. APP.
			HEAT TREAT. SPEC.	
			CHECKED	FINAL APPROVAL
				PM-287
			FINISH & SPEC. NO.	

ISSUE	ITEM	CHANGED FROM	DATE	CN. NO.	DRAFTS	CHECKER	ENG. APP.
TOLERANCES			SCALE 11				
ALL OTHERS	DEC. DIM. ± FRAC. DIM. ± 1/32 ANGULAR DIM. ±		DRILL, PUNCH, COMMERCIAL STOCK SIZES AND MANUFACTURERS TOLERANCES ARE NOT INCLUDED.				



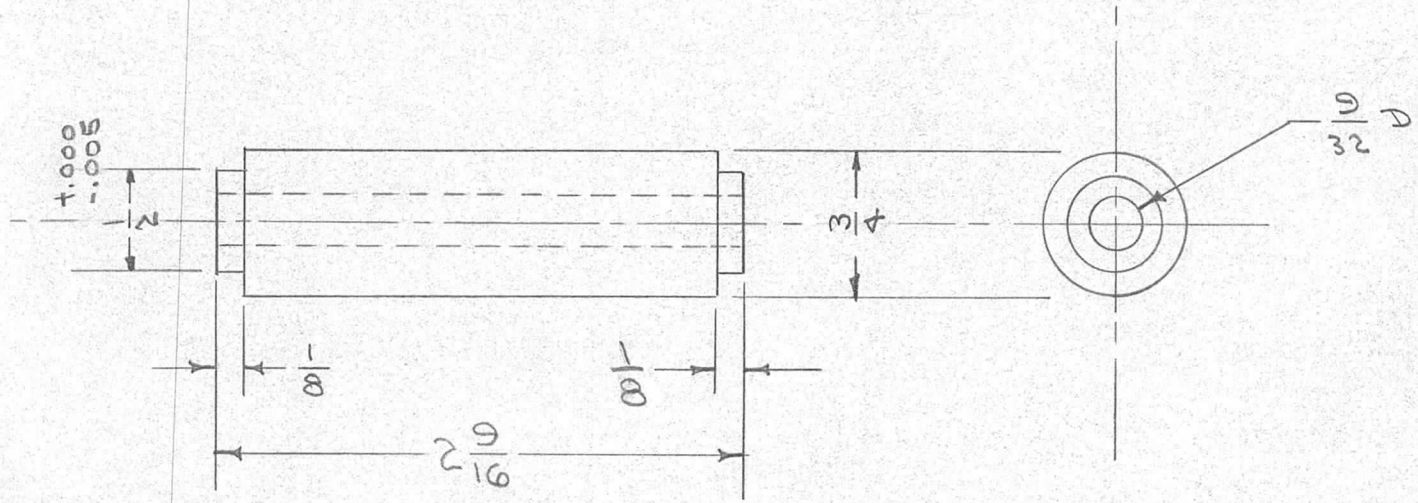


IF IT IS FOUND DESIRABLE TO CHANGE ANY TOLERANCE OR OTHER DETAIL SPECIFIED ON THIS DRAWING NOTIFY THE PURCHASER PROMPTLY.

PM-289

MAXIMUM ALLOWABLE TOLERANCES HAVE BEEN DETERMINED AND DEVIATIONS WILL BE CAUSE FOR REJECTION. REMOVE ALL BURRS AND SHARP EDGES

REQ. PER UNIT	USED ON			
	MODEL	PROJECT NO.	ASS'Y. NO.	DATE
1	KS-85-X	J-227	A-742	4-27-54



REQ.	ITEM	PART NO.	DESCRIPTION	SYMBOL
	3/4 ROD.		THE TECHNICAL MATERIEL CORP.	
	STOCK SIZE		MAMARONECK, NEW YORK	
	ALUMINUM	— II —	SHAFT, REEL	
	MATERIAL	WEIGHT PER PC.		
	24S-T3			
	TYPE & TEMPER		C.D.D. 4-27-54	
	— II —		DRAWN	ELEC. DES. APP. MECH. DES. APP.
	HEAT TREAT. SPEC.		JADe	
	S-101 CAUSTIC DIP		CHECKED	FINAL APPROVAL
	FINISH & SPEC. NO.			PM-289

ISSUE	ITEM	CHANGED FROM	DATE	CN. NO.	DRAFTS	CHECKER	ENG. APP.
ALL OTHERS		DEC. DIM. $\pm 0.005$ FRAC. DIM. $\pm Y64$ ANGULAR DIM. $\pm$					

SCALE — II —

DRILL, PUNCH, COMMERCIAL STOCK SIZES AND MANUFACTURERS TOLERANCES ARE NOT INCLUDED.

IF IT IS FOUND DESIRABLE TO CHANGE ANY TOLERANCE OR OTHER DETAIL SPECIFIED ON THIS DRAWING NOTIFY THE PURCHASER PROMPTLY.

PM-293 B

MAXIMUM ALLOWABLE TOLERANCES HAVE BEEN DETERMINED AND DEVIATIONS WILL BE CAUSE FOR REJECTION. REMOVE ALL BURRS AND SHARP EDGES

REQ PER UNIT

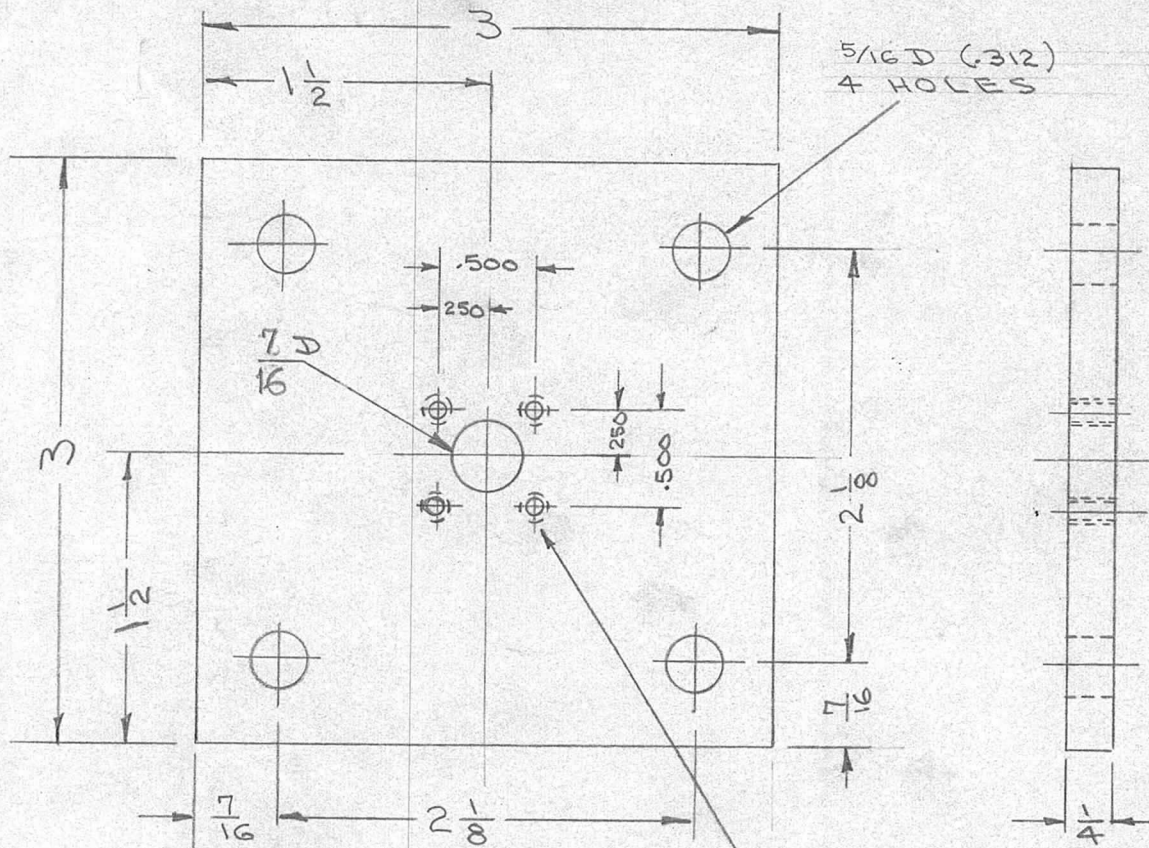
USED ON

MODEL

PROJECT NO.

ASS'Y. NO.

DATE



DRILL & TAP 4-40, 4 HOLES

B	2	USED ON CHART RAC-10 DELETED	8-17-62	7076	FS.	Jde	46
	1	FINISH & SPEC WAS S-101					
A	1	7/16 DIA WAS 3/8 DIA. 4-40 DR. & TAP WAS 3-48	8/15/60	#	JDM	Jde	46
ISSUE	ITEM	CHANGED FROM	DATE	CN. NO.	DRAFTS	CHECKER	ENG. APP.

TOLERANCES

SCALE

ALL OTHERS

DEC. DIM. ±  
FRAC. DIM. ±  
ANGULAR DIM. ±

DRILL, PUNCH, COMMERCIAL STOCK SIZES AND MANUFACTURERS TOLERANCES ARE NOT INCLUDED.

REQ.	ITEM	PART NO.	DESCRIPTION	SYMBOL
			THE TECHNICAL MATERIEL CORP. MAMARONECK, NEW YORK	
			PLATE, MOUNTING	
			MODEL RAC-10	
			Jde 5/4/54	ARB
			0.000 5/4/54	ARB
			5-404 YELLOW IRIDITE	
			FINISH & SPEC. NO.	
			PM-293	B