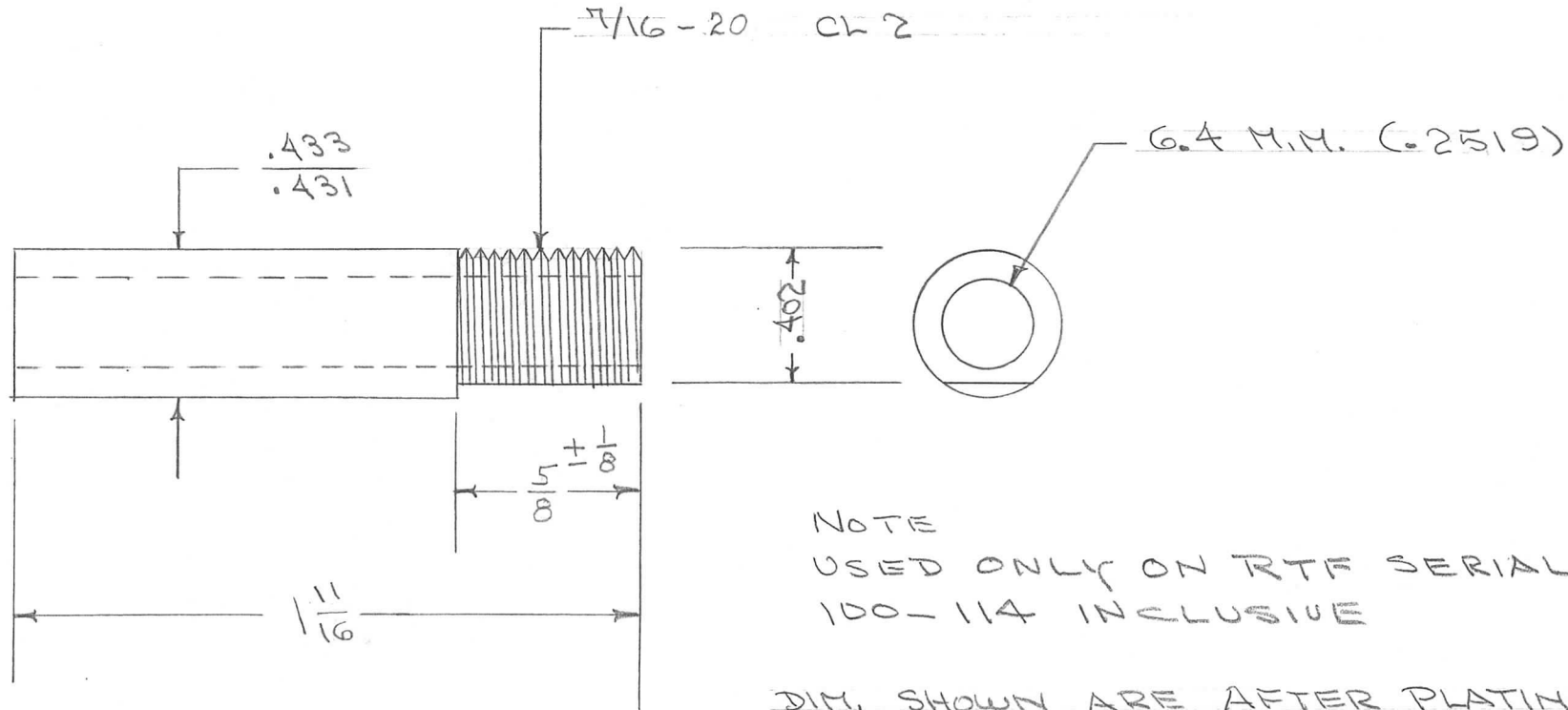


REQ. PER UNIT	USED ON			PM-400	A
	MODEL	ASS'Y. NO.	DATE		
1	RTF	A-1273	2-3-56		



NOTE  
USED ONLY ON RTF SERIAL NOS  
100-114 INCLUSIVE

DIM. SHOWN ARE AFTER PLATING.

REF: NT-116

REQ. ITEM	PART NO.	DESCRIPTION	SYMBOL
	7/16 DIA	THE TECHNICAL MATERIEL CORP. MAMARONECK, NEW YORK	A
	STOCK SIZE		
	BRASS	SHAFT, CAP. INCREASE SWITCH	
	MATERIAL	POW/AMP.	
	FREE TURNING	ADD 2/31/56	
	TYPE & TEMPER	DRAWN	CHECKED
	HEAT TREAT. SPEC.		FINAL APPROVAL
	S-105 CAD PLATE 10002		PM-400 A
	FINISH & SPEC. NO.	ELEC. DES. APP.	MECH. DES. APP.

ISSUE ITEM	CHANGED FROM	DATE	CH. NO.	DRAFTS	CHECKER	ENG. APP.
A. 1	7/16-32 To 7/16-20 1/2 To 5/8 +/- 1/8	1/15/56	1	PB	JAW	WDE

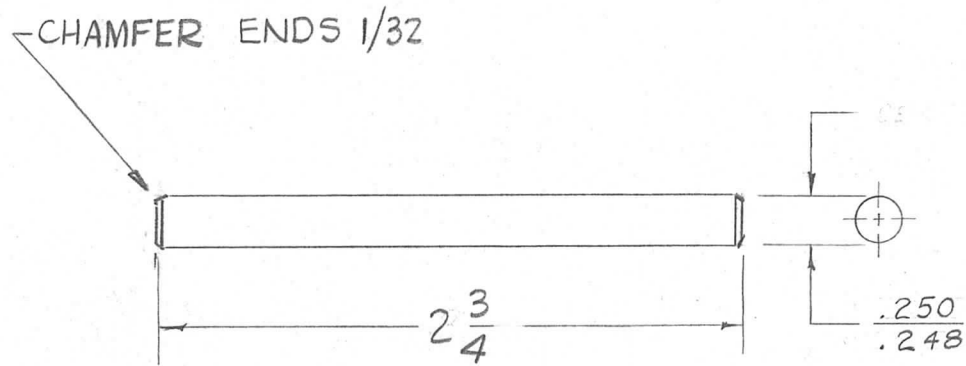
  

DEC. DIM. ±	FRAC. DIM. ±	ANGULAR DIM. ±
	1/64	

TOLERANCES	SCALE:
	MAXIMUM ALLOWABLE TOLERANCES HAVE BEEN DETERMINED AND ANY DEVIATIONS WILL BE CAUSE FOR REJECTION. REMOVE ALL BURRS AND SHARP EDGES

REQ. PER UNIT	USED ON			PM-402	A
	MODEL	ASS'Y. NO.	DATE		
1	RTF-2	1/c	2-10-56		

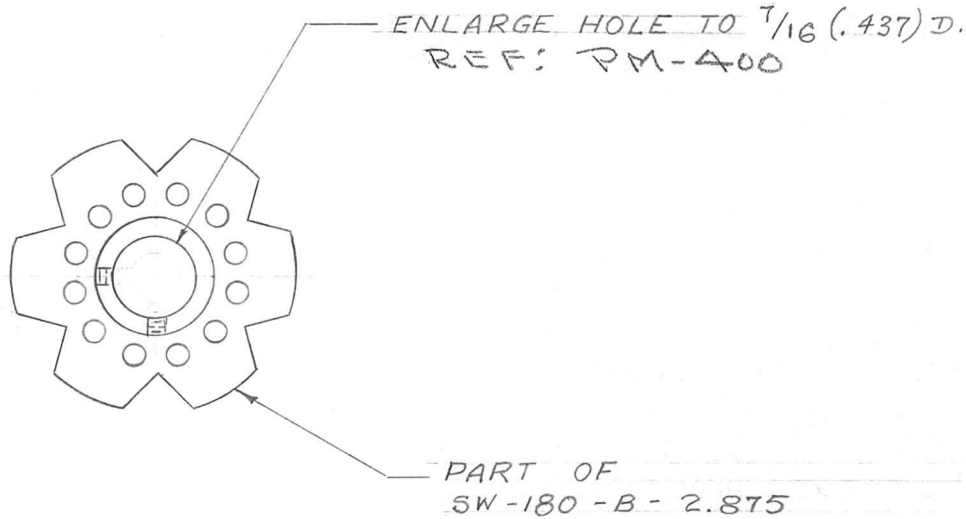


REQ.	ITEM	PART NO.	DESCRIPTION				SYMBOL
		1/4 (.250) D	THE TECHNICAL MATERIEL CORP. MAMARONECK, NEW YORK				
		STOCK SIZE	SHAFT, EXT., INTERCONNECT				
		ALUMINUM	I/c				GPT
		MATERIAL					
		175 T4	#	B 2-10-56	JNO	WDC	
TOLERANCES			SCALE:				
DEC. DIM. ±			MAXIMUM ALLOWABLE TOLERANCES HAVE BEEN DETERMINED AND ANY DEVIATIONS WILL BE CAUSE FOR REJECTION.				
FRAC. DIM. ± 1/64			REMOVE ALL BURRS AND SHARP EDGES				
ANGULAR DIM. ±							
TYPE & TEMPER		HEAT TREAT. SPEC.	DRAWN	CHECKED	FINAL APPROVAL		
S-101 CAUSTIC DIP				me 2/11/56	PM-402 A		
S-107 LACQUIRE							
FINISH & SPEC. NO.			ELEC. DES. APP.	MECH. DES. APP.			

A	2	DIM 2 3/4 was 3.	4/12/61	4662	JNO	WDC	SPM
	1	CHAMFER ENDS 1/32 Added					



REQ. PER UNIT	USED ON			PM-405
	MODEL	ASS'Y. NO.	DATE	
1	RTF	A-1273	2-21-56	



NOTE  
USED ONLY ON RTF SERIAL NOS  
100 - 114 INCLUSIVE

REF: SW-180-B-2.875

ISSUE	ITEM	CHANGED FROM	DATE	CH. NO.	DRAFTS	CHECKER	ENG. APP.	REQ. ITEM	PART NO.	DESCRIPTION	SYMBOL			
										<b>THE TECHNICAL MATERIEL CORP.</b> MAMARONECK. NEW YORK MODIFICATION OF SWITCH DETENT P/A. GPT-750				
									STOCK SIZE					
									MATERIAL					
TOLERANCES			SCALE:							B 2-21-56	JAL	WDE		
DEC. DIM. $\pm$ FRAC. DIM. $\pm$ ANGULAR DIM. $\pm$			MAXIMUM ALLOWABLE TOLERANCES HAVE BEEN DETERMINED AND ANY DEVIATIONS WILL BE CAUSE FOR REJECTION. REMOVE ALL BURRS AND SHARP EDGES							TYPE & TEMPER	HEAT TREAT. SPEC.	DRAWN	CHECKED	FINAL APPROVAL
										FINISH & SPEC. NO.	ELEC. DES. APP.	MECH. DES. APP.	PM-405	

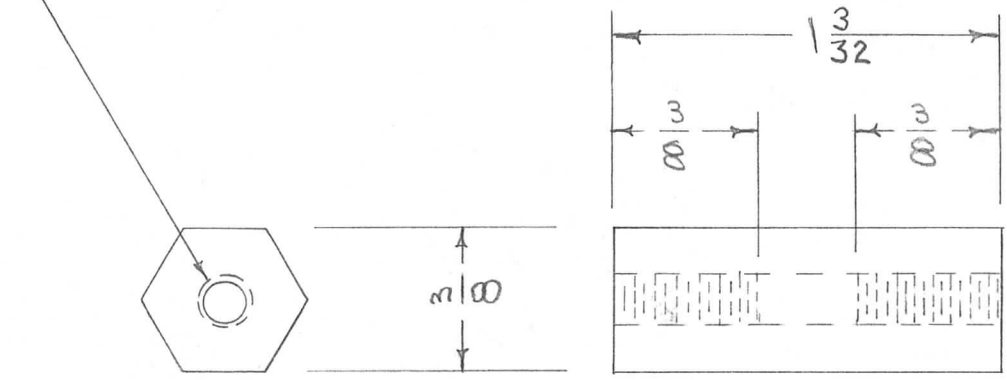


REQ. PER UNIT	USED ON		
	MODEL	ASS'Y. NO.	DATE
1	RTF		3-2-56
1	RTF-2	P/A	11/20/57

PM-407

DRILL & TAP 8-32 X 3/8 DEEP EACH END

USE #28 DRILL WITH LUBRICANT - CLEAN TAP AFTER EACH OPERATION.



REQ.	ITEM	PART NO.	DESCRIPTION	SYMBOL
		3/8 HEX ROD	THE TECHNICAL MATERIEL CORP. MAMARONECK, NEW YORK	
		STOCK SIZE		
		ALUMINUM	SPACER, CAPACITOR	
		MATERIAL	P/A.	
		175 T3	ADD 3/2/56	<i>RB</i>
				<i>WJ</i>
		TYPE & TEMPER	DRAWN	CHECKED
		HEAT TREAT. SPEC.		
		S-101 CAUSTIC DIP		
		S-107 LACQUER		
		FINISH & SPEC. NO.	ELEC. DES. APP.	MECH. DES. APP.
				PM-407

ISSUE	ITEM	CHANGED FROM	DATE	CH. NO.	DRAFTS	CHECKER	ENG. APP.

TOLERANCES

SCALE:

DEC. DIM. ±

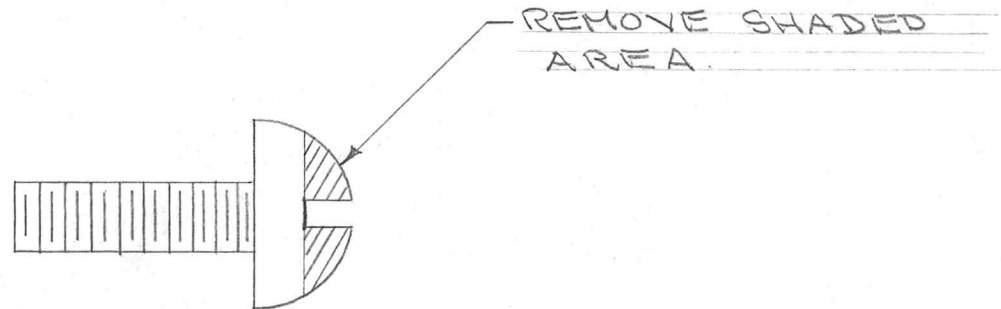
FRAC. DIM. ± 1/64

ANGULAR DIM. ±

MAXIMUM ALLOWABLE TOLERANCES HAVE BEEN DETERMINED AND ANY DEVIATIONS WILL BE CAUSE FOR REJECTION.

REMOVE ALL BURRS AND SHARP EDGES

REQ. PER UNIT	USED ON			PM-411
	MODEL	ASS'Y. NO.	DATE	
1	RTF			



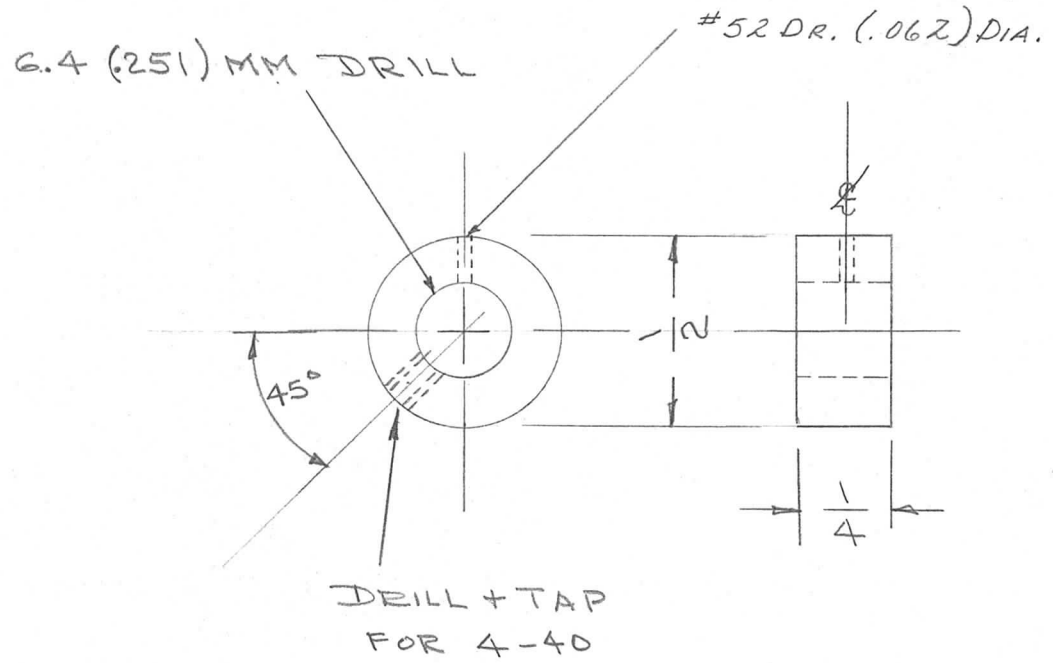
USE SCRS0632BNA

NOTE  
USED ONLY ON RTF SERIAL NOS.  
100-114 INCLUSIVE

ISSUE	ITEM	CHANGED FROM	DATE	CH. NO.	DRAFTS	CHECKER	ENG. APP.	REQ. ITEM	PART NO.	DESCRIPTION	SYMBOL	
										<b>THE TECHNICAL MATERIEL CORP.</b> MAMARONECK, NEW YORK CONTACT, INCREASE SWITCH P/A		
									STOCK SIZE			
									MATERIAL			
TOLERANCES			SCALE:							CDP 2/13/76	JAN	WDC
DEC. DIM. ±			MAXIMUM ALLOWABLE TOLERANCES HAVE BEEN DETERMINED AND ANY DEVIATIONS WILL BE CAUSE FOR REJECTION. REMOVE ALL BURRS AND SHARP EDGES					TYPE & TEMPER	HEAT TREAT. SPEC.	DRAWN	CHECKED	FINAL APPROVAL
FRAC. DIM. ±												
ANGULAR DIM. ±								FINISH & SPEC. NO.	ELEC. DES. APP.	MECH. DES. APP.		

REQ. PER UNIT	USED ON		
	MODEL	ASS'Y. NO.	DATE
1	RTF	A-1176	4/27/56
1	RTF-2	P/A	11-20-58

PM-414 B



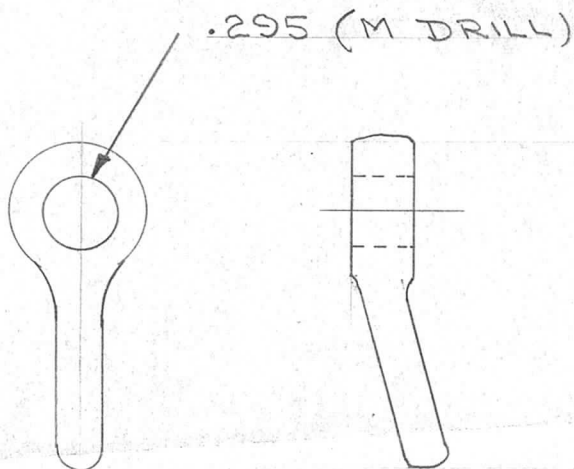
ISSUE	ITEM	CHANGED FROM	DATE	CH. NO.	DRAFTS	CHECKER	ENG. APP.	REQ. ITEM	PART NO.	DESCRIPTION	SYMBOL				
										THE TECHNICAL MATERIEL CORP. MAMARONECK. NEW YORK					
B	1	4-40 TAPPED HOLE ADDED	9/21/59	PR/29	HL		alm			STOCK SIZE					
A	1	ADDED #52 DR. HOLE	11-5-58		HL	HL	CR			BRASS					
										MATERIAL					
										RTF	GPT-750				
TOLERANCES			SCALE:					FREE TURNING							
DEC. DIM. ±			MAXIMUM ALLOWABLE TOLERANCES HAVE BEEN DETERMINED AND ANY DEVIATIONS WILL BE CAUSE FOR REJECTION. REMOVE ALL BURRS AND SHARP EDGES					TYPE & TEMPER	HEAT TREAT. SPEC.	DRAWN	CHECKED	FINAL APPROVAL			
FRAC. DIM. ±								CADMIUM PLATE							
ANGULAR DIM. ±								S-105	.0002						
								FINISH & SPEC. NO.		ELEC. DES. APP.	MECH. DES. APP.	PM-414 B			

IF IT IS FOUND DESIRABLE TO CHANGE ANY TOLERANCE OR OTHER DETAIL SPECIFIED ON THIS DRAWING NOTIFY THE PURCHASER PROMPTLY.

PM-415 A

MAXIMUM ALLOWABLE TOLERANCES HAVE BEEN DETERMINED AND DEVIATIONS WILL BE CAUSE FOR REJECTION. REMOVE ALL BURRS AND SHARP EDGES

REQ PER UNIT	USED ON			
	MODEL	PROJECT NO.	ASS'Y. NO.	DATE
1	FFRD-1,2,3			5/15/56
1	FFRD-3M			"
1	FFRD-5,6,7,8			"



USE PM-181 L

REQ.	ITEM	PART NO.	DESCRIPTION	SYMBOL
			THE TECHNICAL MATERIEL CORP. MAMARONECK. NEW YORK	
STOCK SIZE				
		PM-181	SHAFT LOCK KNOB	
MATERIAL		WEIGHT PER PC.	MODIFICATION	
TYPE & TEMPER				
HEAT TREAT. SPEC.				
FINISH & SPEC. NO.				

A		CLERICAL CHANGE	82464		WB	@	
ISSUE	ITEM	CHANGED FROM	DATE	CN. NO.	DRAFTS	CHECKER	ENG. APP.
TOLERANCES			SCALE				
ALL OTHERS			DRILL, PUNCH, COMMERCIAL STOCK SIZES AND MANUFACTURERS TOLERANCES ARE NOT INCLUDED.				
DEC. DIM. ±							
FRAC. DIM. ±							
ANGULAR DIM. ±							

DRAWN		ELEC. DES. APP.		MECH. DES. APP.	
CHECKED		FINAL APPROVAL			
		PM-415 A			

IF IT IS FOUND DESIRABLE TO CHANGE ANY TOLERANCE OR OTHER DETAIL SPECIFIED ON THIS DRAWING NOTIFY THE PURCHASER PROMPTLY.

PM-417 B

MAXIMUM ALLOWABLE TOLERANCES HAVE BEEN DETERMINED AND DEVIATIONS WILL BE CAUSE FOR REJECTION. REMOVE ALL BURRS AND SHARP EDGES

REQ PER UNIT

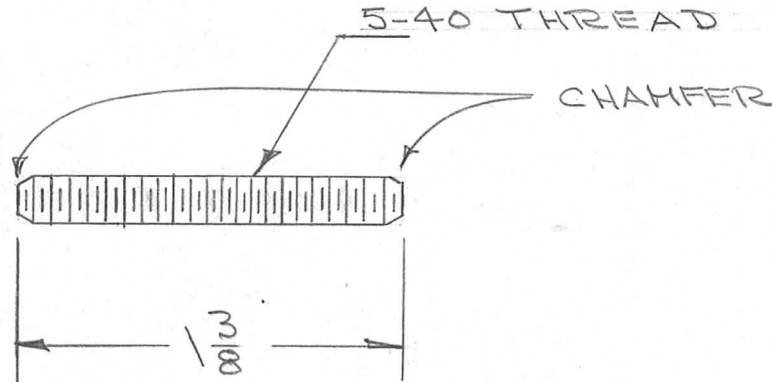
USED ON

MODEL

PROJECT NO.

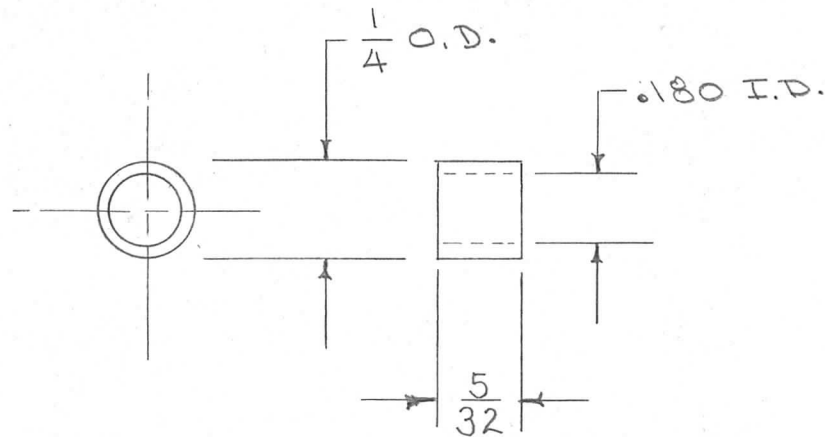
ASS'Y. NO.

DATE



REQ.	ITEM	PART NO.	DESCRIPTION			SYMBOL	
		5-40 THREADED ROD	THE TECHNICAL MATERIEL CORP.				
		STOCK SIZE	MAMARONECK. NEW YORK				
		BRASS	STUD, RF SWITCH				
		MATERIAL	WEIGHT PER PC.				
B	1	was Used on G.P.R	8/21/56	Z	file	file	
A	1	CHAMFER ADDED	8/10/56	1	file	file	
ISSUE	ITEM	CHANGED FROM	DATE	CN. NO.	DRAFTS	CHECKER	ENG. APP.
TOLERANCES			SCALE				
ALL OTHERS	DEC. DIM. $\pm$ FRAC. DIM. $\pm$ ANGULAR DIM. $\pm$		DRILL, PUNCH, COMMERCIAL STOCK SIZES AND MANUFACTURERS TOLERANCES ARE NOT INCLUDED.				
HEAT TREAT. SPEC.			FINISH & SPEC. NO.				
DRAWN			ELEC. DES. APP.		MECH. DES. APP.		
CHECKED			FINAL APPROVAL				
			PM-417		B		

REQ. PER UNIT	USED ON			PM-420	A
	MODEL	ASS'Y. NO.	DATE		
2	RTF (271)		6-15-56		
2	PM0-1 (285)		"		
2	PM0-2 (11)		"		
2	VOX-1 (291)		"		
2	VOX-2 (11)		"		
2	RTF-2	F/P	11-20-58		

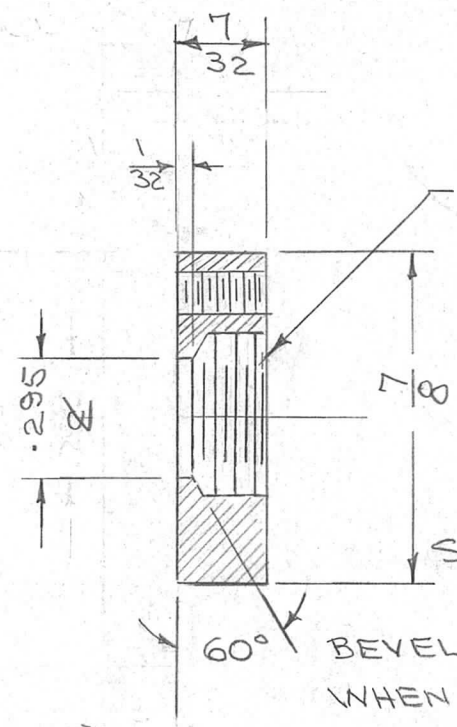
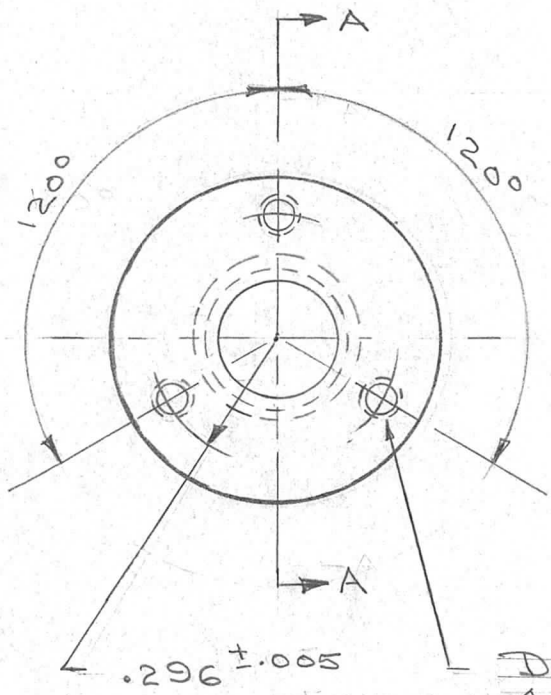


ISSUE	ITEM	CHANGED FROM	DATE	CH. NO.	DRAFTS	CHECKER	ENG. APP.	REQ. ITEM	PART NO.	DESCRIPTION	SYMBOL	
								1/4 O.D. X .180 I.D. TUBING		THE TECHNICAL MATERIEL CORP. MAMARONECK, NEW YORK		
								STOCK SIZE				
A	1	FINISH WAS S101 CAUSTIC DIP S107 LACQUER	4-8-63	8735	RE	<i>MS</i>	<i>MS</i>	ALUMINUM		SPACER, CALIBRATE CONTROL LOCK		
								MATERIAL				
TOLERANCES			SCALE:					6061-T4		CDP. 9/15/56	<i>MS</i>	<i>WOC</i>
DEC. DIM. ± FRAC. DIM. ± 1/64 ANGULAR DIM. ±			MAXIMUM ALLOWABLE TOLERANCES HAVE BEEN DETERMINED AND ANY DEVIATIONS WILL BE CAUSE FOR REJECTION. REMOVE ALL BURRS AND SHARP EDGES					TYPE & TEMPER	HEAT TREAT. SPEC.	DRAWN	CHECKED	FINAL APPROVAL
								5404 YELLOW IRIDITE			<i>WOC</i>	PM-420
								FINISH & SPEC. NO.		ELEC. DES. APP.	MECH. DES. APP.	A



REQ PER UNIT	USED ON		
	MODEL	ASS'Y. NO.	DATE
1	RTF (271)		6-14-56
1	PMO-1 (285)		"
1	PMO-2 (")		"
1	VOX-1 (291)		"
1	VOX-2 (")		"

PM-421



Q (.332) DRILL. THEN  
BOTTOM TAP 3/8-32 NEF.  
CLASS 2

SECTION A-A

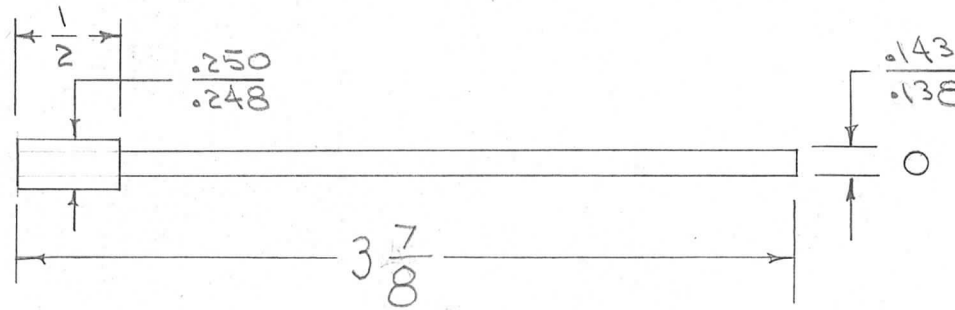
60° BEVEL OBTAINED AUTOMATICALLY  
WHEN BOTTOM TAPPED

.296 ± .005  
DRILL & TAP  
FINISH 4-40 - 3 REQ.

REQ.	ITEM	PART NO.	DESCRIPTION	SYMBOL					
			THE TECHNICAL MATERIEL CORP. MAMARONECK, NEW YORK						
		STOCK SIZE	BUSHING, CALIBRATE DIAL LOCK						
		MATERIAL							
ISSUE	ITEM	CHANGED FROM	DATE	CH. NO.	DRAFTS	CHECKER	ENG. APP.		
TOLERANCES			SCALE:						
DEC. DIM. ± .005			MAXIMUM ALLOWABLE TOLERANCES HAVE BEEN DETERMINED AND ANY DEVIATIONS WILL BE CAUSE FOR REJECTION.						
FRAC. DIM. ± 1/64			REMOVE ALL BURRS AND SHARP EDGES						
ANGULAR DIM. ± 1°									
TYPE & TEMPER		HEAT TREAT. SPEC.		DRAWN		CHECKED		FINAL APPROVAL	
S-105 CAD PLATE		.0003		DSD. 9/14/56		JAW		WDC	
FINISH & SPEC. NO.			ELEC. DES. APP.		MECH. DES. APP.		PM-421		



REQ. PER UNIT	610	USED ON		PM-422	A
	MODEL	ASS'Y. NO.	DATE		
1	RTF		8/31/56		

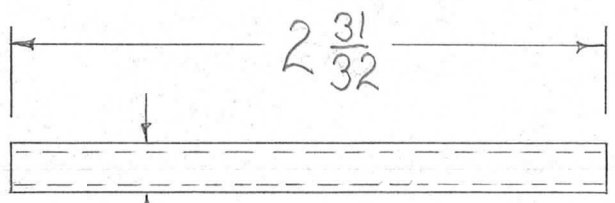


ISSUE	ITEM	CHANGED FROM	DATE	CH. NO.	DRAFTS	CHECKER	ENG. APP.	REQ. ITEM	PART NO.	DESCRIPTION	SYMBOL		
									1/4 DIA.	THE TECHNICAL MATERIEL CORP. MAMARONECK, NEW YORK			
									STOCK SIZE				
A	1	FINISH ADDED	11/21/56	1	LG	<i>JAD</i>	<i>WJ</i>		STEEL	SHAFT, ANT. TUNING CAP.			
									MATERIAL	C-117 P/A RTF			
									STAINLESS	<i>WJ</i>			
									TYPE & TEMPER	DRAWN	CHECKED	FINAL APPROVAL	
									S104 PASSIVATE			PM-422	A
									FINISH & SPEC. NO.	ELEC. DES. APP.	MECH. DES. APP.		

DEC. DIM.  $\pm$   
 FRAC. DIM.  $\pm$  1/64  
 ANGULAR DIM.  $\pm$

SCALE:  
 MAXIMUM ALLOWABLE TOLERANCES HAVE BEEN DETERMINED AND ANY DEVIATIONS WILL BE CAUSE FOR REJECTION.  
 REMOVE ALL BURRS AND SHARP EDGES

REQ. PER UNIT	G10		USED ON		PM-424
	MODEL	ASS'Y. NO.	DATE		
1	RTF		8-31-56		

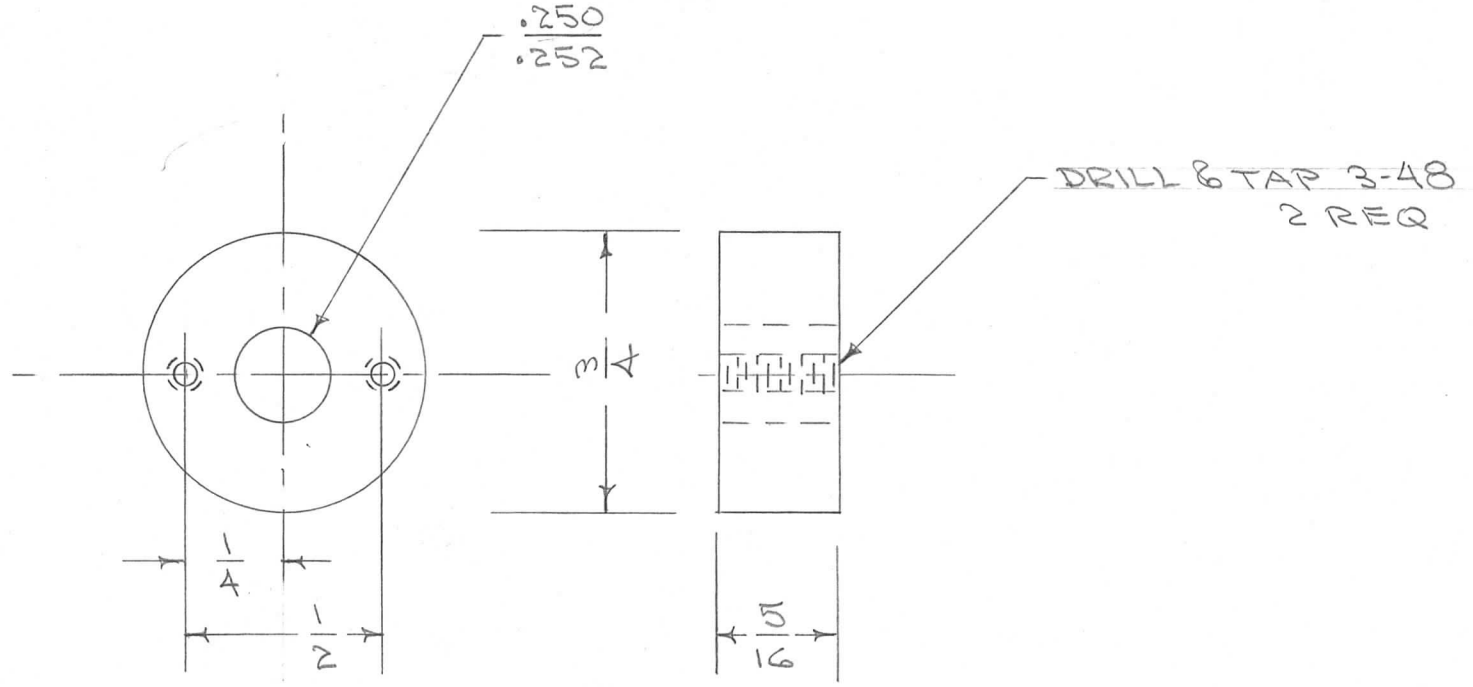


CENTERLESS GRIND TO  $\frac{.248}{.250}$

MATERIAL  
 HARD DRAWN ROUND SEAMLESS BRASS  
 NOMINAL O.D. -  $\frac{1}{4}$   
 WALL THICKNESS - .050

REQ.	ITEM	PART NO.	DESCRIPTION				SYMBOL
			THE TECHNICAL MATERIEL CORP. MAMARONECK, NEW YORK				
			STOCK SIZE				
			SEE ABOVE				
			MATERIAL				
			SHAFT, CAP. INC. SWITCH				
			P/A				RTF
ISSUE	ITEM	CHANGED FROM	DATE	CH. NO.	DRAFTS	CHECKER	ENG. APP.
TOLERANCES			SCALE:				
DEC. DIM. $\pm$			MAXIMUM ALLOWABLE TOLERANCES HAVE BEEN DETERMINED AND ANY DEVIATIONS WILL BE CAUSE FOR REJECTION.				
FRAC. DIM. $\pm \frac{1}{64}$			REMOVE ALL BURRS AND SHARP EDGES				
ANGULAR DIM. $\pm$			TYPE & TEMPER		HEAT TREAT. SPEC.	DRAWN	CHECKED
			FINISH & SPEC. NO.		ELEC. DES. APP.	MECH. DES. APP.	PM-424

REQ. PER UNIT	610	USED ON		PM-425
	MODEL	ASS'Y. NO.	DATE	
1	RTF		8-31-56	



ISSUE	ITEM	CHANGED FROM	DATE	CH. NO.	DRAFTS	CHECKER	ENG. APP.	REQ. ITEM	PART NO.	DESCRIPTION	SYMBOL
										THE TECHNICAL MATERIEL CORP. MAMARONECK, NEW YORK	
									STOCK SIZE	HUB, CAP. INC. SWITCH	
									MATERIAL	P/A RTF	
								FREE TURNING		8/31/56	
								TYPE & TEMPER	HEAT TREAT. SPEC.	DRAWN	CHECKED
											FINAL APPROVAL
								FINISH & SPEC. NO.		ELEC. DES. APP.	MECH. DES. APP.
											PM-425

TOLERANCES

DEC. DIM.  $\pm$

FRAC. DIM.  $\pm 1/64$

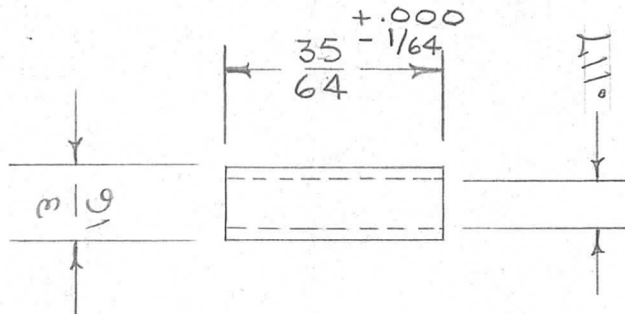
ANGULAR DIM.  $\pm$

SCALE:

MAXIMUM ALLOWABLE TOLERANCES HAVE BEEN DETERMINED AND ANY DEVIATIONS WILL BE CAUSE FOR REJECTION.

REMOVE ALL BURRS AND SHARP EDGES

REQ. PER UNIT	617		USED ON		PM 426	A
	MODEL	ASS'Y. NO.	DATE			
16	QDP-354		9-17-56			



ISSUE	ITEM	CHANGED FROM	DATE	CH. NO.	DRAFTS	CHECKER	ENG. APP.	REQ. ITEM	PART NO.	DESCRIPTION	SYMBOL	
								.117 ID X 3/16.0D	THE TECHNICAL MATERIEL CORP. MAMARONECK, NEW YORK			
								STOCK SIZE				
A		CHG'D 9/16 TO 35/64 <sup>+000</sup> <del>1/16</del>	3/17/67	17995	RME	<i>[Signature]</i>	<i>[Signature]</i>	ALUMINUM	SPACER, SWITCH			
								MATERIAL	QDP			
								G061-TG	000 9/17/67	<i>[Signature]</i>	<i>[Signature]</i>	
								TYPE & TEMPER	HEAT TREAT. SPEC.	DRAWN	CHECKED	FINAL APPROVAL
								S-101 CAUSTIC DIP			<i>[Signature]</i>	PM 426
								S-107 LACQUER				A
								FINISH & SPEC. NO.	ELEC. DES. APP.	MECH. DES. APP.		

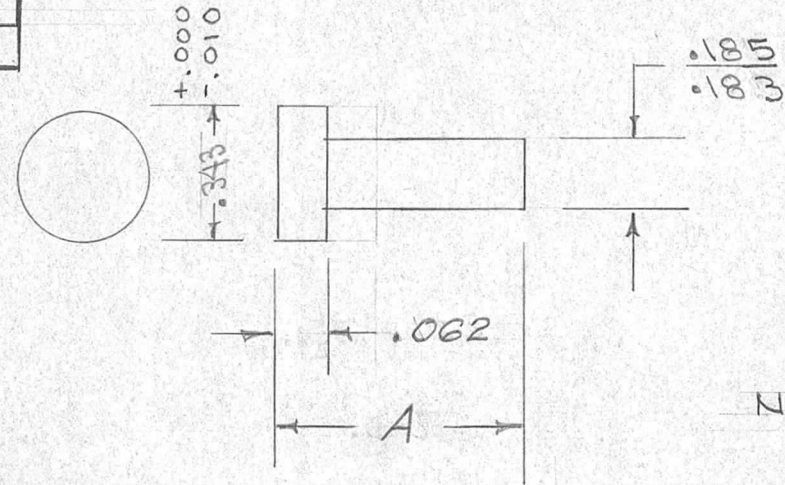
DEC. DIM. ±  
FRAC. DIM. ± 1/64  
ANGULAR DIM. ±

MAXIMUM ALLOWABLE TOLERANCES HAVE BEEN DETERMINED AND ANY DEVIATIONS WILL BE CAUSE FOR REJECTION.  
REMOVE ALL BURRS AND SHARP EDGES

TMC NO.	"A" DIMENSION
PM-427-1	.593
PM-427-2	.490
PM-427-3	.384
PM-427-4	.522
PM-427-5	.404
PM-427-6	.648

REQ. PER UNIT	G17 USED ON		DATE
	MODEL	ASSY. NO.	
4	QDP-154	PM-427-1	9/11/56
4	QDP-254	PM-427-1	7-26-57
4	QDP-354	PM-427-4	8-8-57
1	SBT-1KA.E.F	PM-427-5	7-20-61
1	QDP-PA-113	PM-427-6	11-11-65

PM-427 G



NOTE: DIM. SHOWN ARE AFTER PLATING.

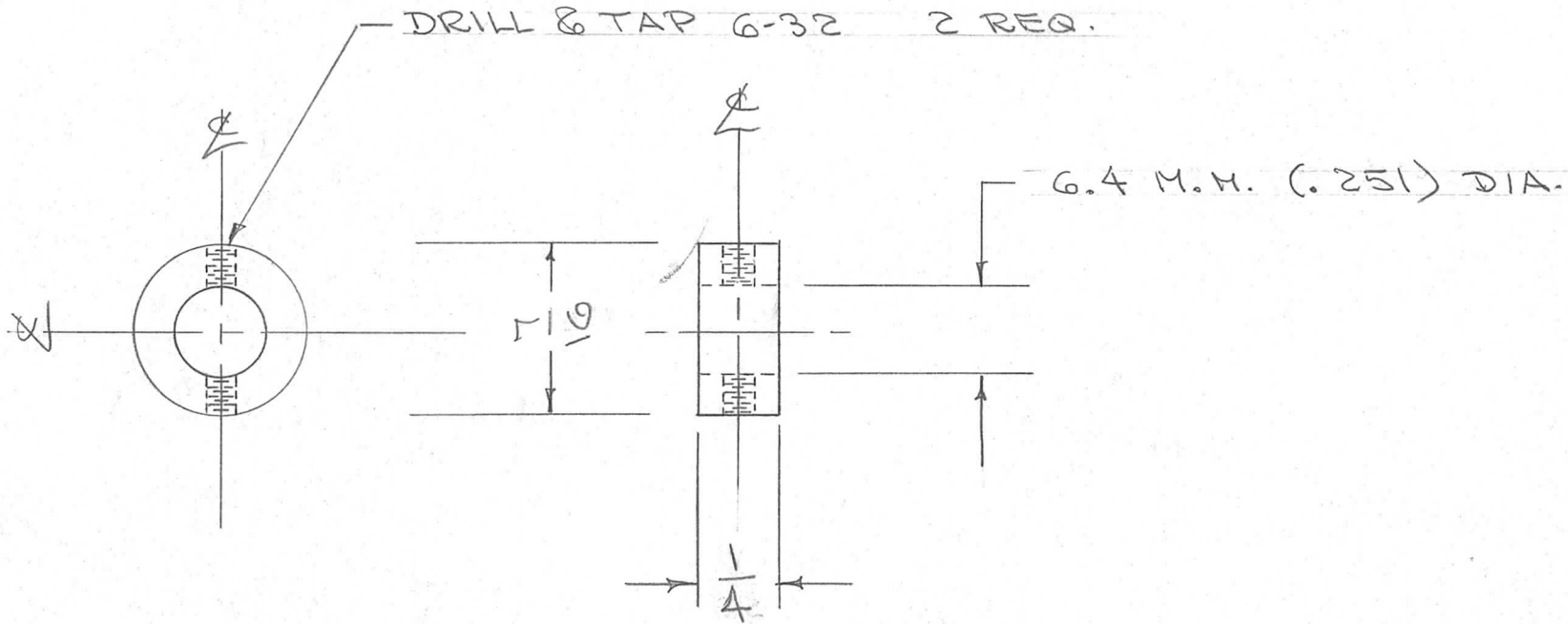
G	1	-6 ADDED FINISH WAS CAD. PLATE	11-30-65	15282	AV.	QCB	RC
F	1	PM-427-5 ADDED	7-24-61	5318	R.J.	RU	RK
E	1	Added PM-427-4	2-14-61	4137	JM	QCB	YM
D	1	.185 DIA. WAS .187 DIA	9-14-60	2942	WJ	file	file
C	1	-3 ADDED	12/16/59	1678	AB	file	file
B	3	CHART ADDED	7-26-57	2	SC.	file	file
	2	"A" WAS .656					
	1	.062 WAS .125					
A	1	.656 WAS .625	11/26/56	1	file	file	file

REQ. ITEM	PART NO.	DESCRIPTION	SYMBOL
		THE TECHNICAL MATERIEL CORP. MAMARONECK, NEW YORK	
STOCK SIZE		PLUNGER SWITCH	
MATERIAL		QDP - SERIES	
FREE TURNING		QDP 9/11/56	file
TYPE & TEMPER	HEAT TREAT. SPEC.	DRAWN	CHECKED
NICKEL PLATE #0002			file
FINISH & SPEC. NO.	ELEC. DES. APP.	MECH. DES. APP.	FINAL APPROVAL
			PM-427 G

ISSUE	ITEM	CHANGED FROM	DATE	CH. NO.	DRAFTS	CHECKER	ENG. APP.
TOLERANCES		SCALE:					
DEC. DIM. ± .005		MAXIMUM ALLOWABLE TOLERANCES HAVE BEEN DETERMINED AND ANY DEVIATIONS WILL BE CAUSE FOR REJECTION.					
FRAC. DIM. ±		REMOVE ALL BURRS AND SHARP EDGES					
ANGULAR DIM. ±							



REQ. PER UNIT	USED ON			PM-428	A
	MODEL	ASS'Y. NO.	DATE		
4	GPR-90		9-27-56		

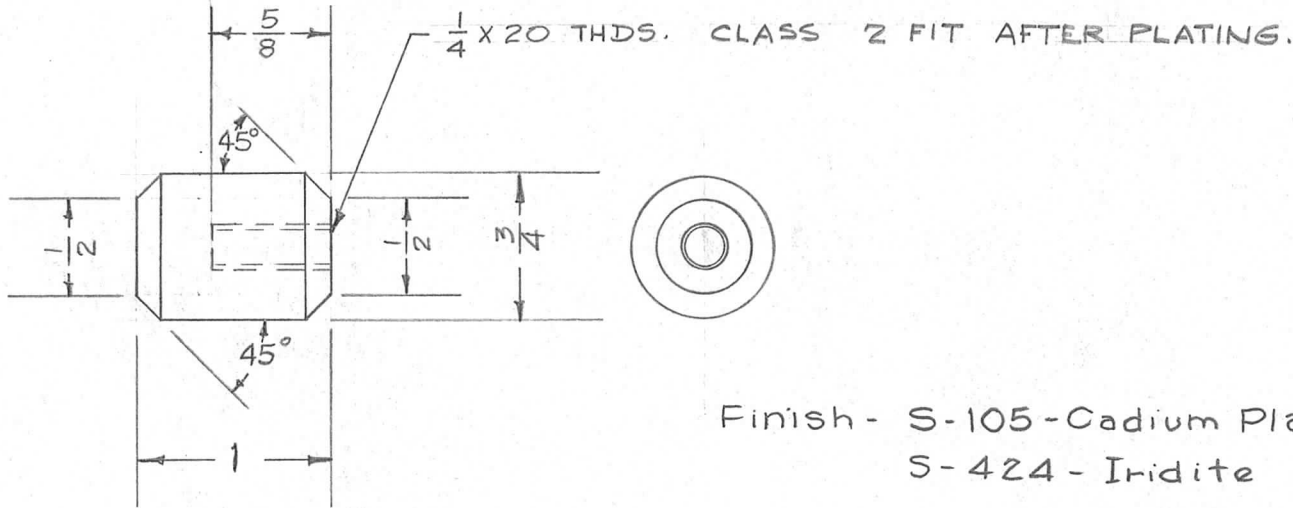


ISSUE	ITEM	CHANGED FROM	DATE	CH. NO.	DRAFTS	CHECKER	ENG. APP.	REQ. ITEM	PART NO.	DESCRIPTION	SYMBOL		
								7/16 DIA. STOCK SIZE		THE TECHNICAL MATERIEL CORP. MAMARONECK, NEW YORK			
A	1	STOCK SIZE DIA. CORRECTED	11/30/56	1	JAD	JAD	WR	BRASS		COLLAR			
								MATERIAL		FRICION DRIVE GPR-90			
								FREE TURNING		9/27/56	JAD	WR	
								TYPE & TEMPER	HEAT TREAT. SPEC.	DRAWN	CHECKED	FINAL APPROVAL	
								NONE			WR	PM-428	A
								FINISH & SPEC. NO.		ELEC. DES. APP.	MECH. DES. APP.		

DEC. DIM. ± .005  
 FRAC. DIM. ± 1/64  
 ANGULAR DIM. ±

SCALE:  
 MAXIMUM ALLOWABLE TOLERANCES HAVE BEEN DETERMINED AND ANY DEVIATIONS WILL BE CAUSE FOR REJECTION.  
 REMOVE ALL BURRS AND SHARP EDGES

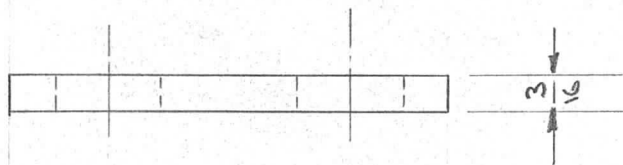
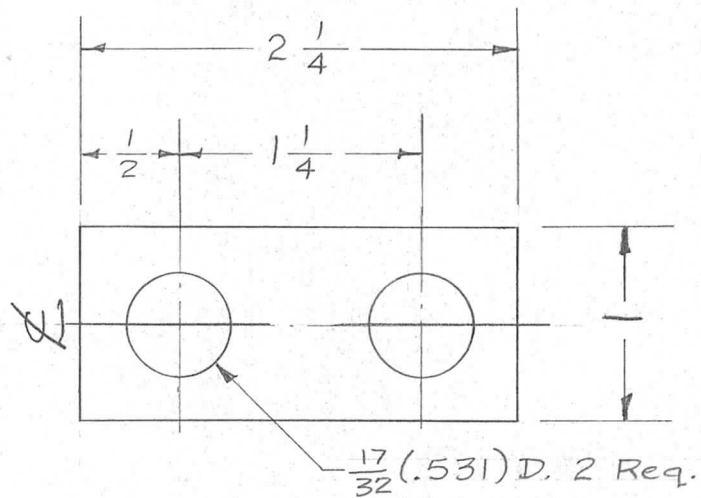
REQ. PER UNIT	USED ON			PM-430 A
	MODEL	ASS'Y. NO.	DATE	
1	TER-5000	A-1431(8)	3-21-57	



REQ.	ITEM	PART NO.	DESCRIPTION				SYMBOL
		3/4 D. ROD	THE TECHNICAL MATERIEL CORP.				
		STOCK SIZE	MAMARONECK, NEW YORK				
		BRASS	ELECTRODE, SPARK GAP				
		MATERIAL	(TER-5000)				
A	1	Finish Added	6/9/59	J.C.B.	<i>J.C.B.</i>	<i>ah</i>	
ISSUE	ITEM	CHANGED FROM	DATE	CH. NO.	DRAFTS	CHECKER	ENG. APP.
TOLERANCES			SCALE: //				
DEC. DIM. $\pm$			MAXIMUM ALLOWABLE TOLERANCES HAVE BEEN DETERMINED AND ANY DEVIATIONS WILL BE CAUSE FOR REJECTION.				
FRAC. DIM. $\pm$ 1/64			REMOVE ALL BURRS AND SHARP EDGES				
ANGULAR DIM. $\pm$							
FREE TURNING		//		16	3-21-57	<i>ah</i>	<i>ah</i>
TYPE & TEMPER		HEAT TREAT. SPEC.		DRAWN	CHECKED	FINAL APPROVAL	
See Note						PM-430 A	
FINISH & SPEC. NO.				ELEC. DES. APP.	MECH. DES. APP.		



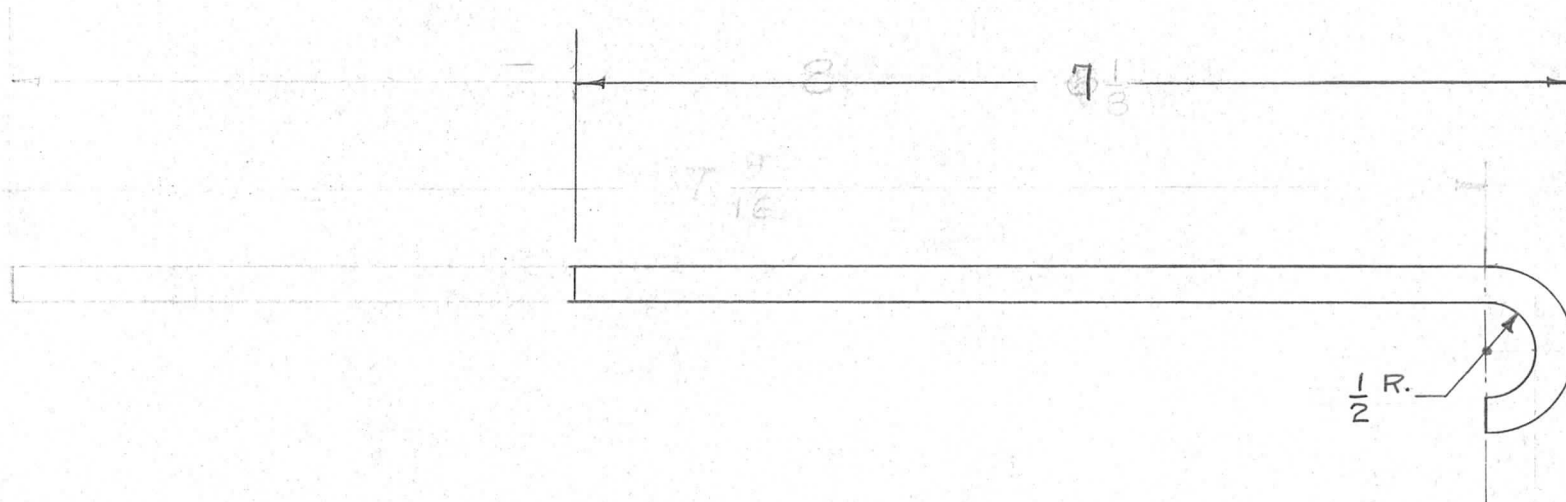
REQ. PER UNIT	USED ON			PM-431	A
	MODEL	ASS'Y. NO.	DATE		
2	TER-5000	A-1431(8)	3-21-57		



Finish - S-245 Silver Plate .0005  
S-423 Iridite

ISSUE	ITEM	CHANGED FROM	DATE	CH. NO.	DRAFTS	CHECKER	ENG. APP.	REQ. ITEM	PART NO.	DESCRIPTION	SYMBOL						
								3/16 THK. X 1		THE TECHNICAL MATERIEL CORP. MAMARONECK, NEW YORK							
								STOCK SIZE			CONNECTOR, COIL						
A	1	Finish added	6/19/57		J.C.B.	<i>JCB</i>	<i>ah</i>	BRASS		(TER-5000)							
TOLERANCES								SCALE: #									
DEC. DIM. ± .001			MAXIMUM ALLOWABLE TOLERANCES HAVE BEEN DETERMINED AND ANY DEVIATIONS WILL BE CAUSE FOR REJECTION. REMOVE ALL BURRS AND SHARP EDGES					TYPE & TEMPER		HEAT TREAT. SPEC.		DRAWN		CHECKED		FINAL APPROVAL	
FRAC. DIM. ± 1/64								HALF HARD		— # —		16 3-21-57		<i>JCB</i>		<i>ah</i>	
ANGULAR DIM. ±			FINISH & SPEC. NO.		ELEC. DES. APP.		MECH. DES. APP.										

REQ. PER UNIT	USED ON			PM-432	E
	MODEL	ASS'Y. NO.	DATE		
		A-431(2)	3-21-57		

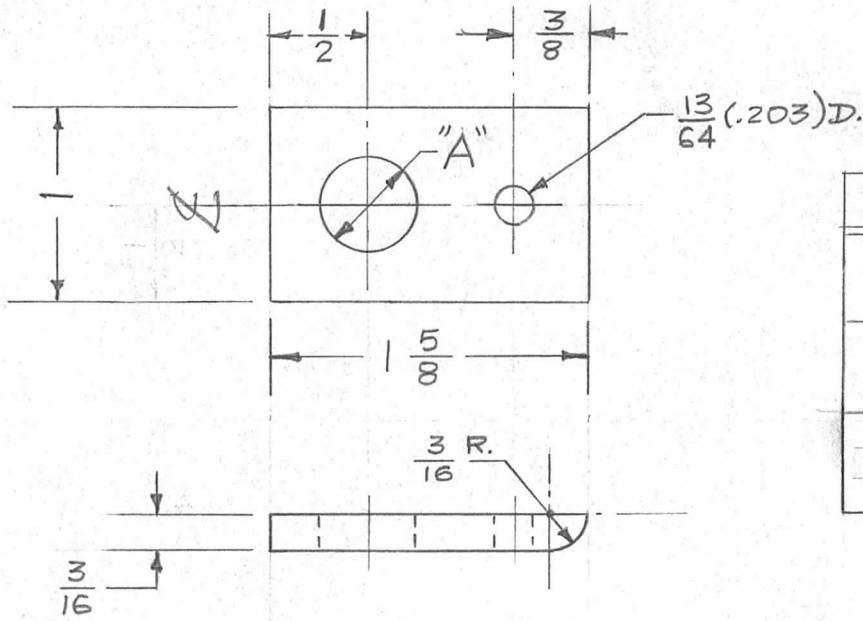


Finish - S-105 - Cadmium Plated .0003  
S-424 - Iridite

ISSUE	ITEM	CHANGED FROM	DATE	CH. NO.	DRAFTS	CHECKER	ENG. APP.	REQ. ITEM	PART NO.	DESCRIPTION	SYMBOL		
C	1	UPDATED DWG	10/8/63	10155	AD	MYT	[Signature]	3/16 D.	THE TECHNICAL MATERIEL CORP. MAMARONECK, NEW YORK	ROD, SPARK GAP	E		
B	1	Finish Added	4/9/59		J.C.B.	[Signature]	[Signature]	STOCK SIZE					
A	1	6 1/8" OVERALL WAS 5 1/8"	9/9/57	1	E	[Signature]	[Signature]	MATERIAL BRASS					
TOLERANCES			SCALE:					FREE TURNING	#	163-21-57	[Signature]	[Signature]	
DEC. DIM. ±			MAXIMUM ALLOWABLE TOLERANCES HAVE BEEN DETERMINED AND ANY DEVIATIONS WILL BE CAUSE FOR REJECTION. REMOVE ALL BURRS AND SHARP EDGES					TYPE & TEMPER		HEAT TREAT. SPEC.	DRAWN	CHECKED	FINAL APPROVAL
FRAC. DIM. ± 1/64								FINISH & SPEC. NO.		ELEC. DES. APP.	MECH. DES. APP.	See Note	
ANGULAR DIM. ±													

NUMBER	REQ. PER UNIT	USED ON		
		MODEL	ASS'Y. NO.	DATE
PM-433-1	2	TER-5000	A-1404	3-21-57
PM-433-2	2	TER-5000	A-1405	3-21-57
PM-433-3	2	TER-5000-70	A-1586	1-8-59

PM-433 A

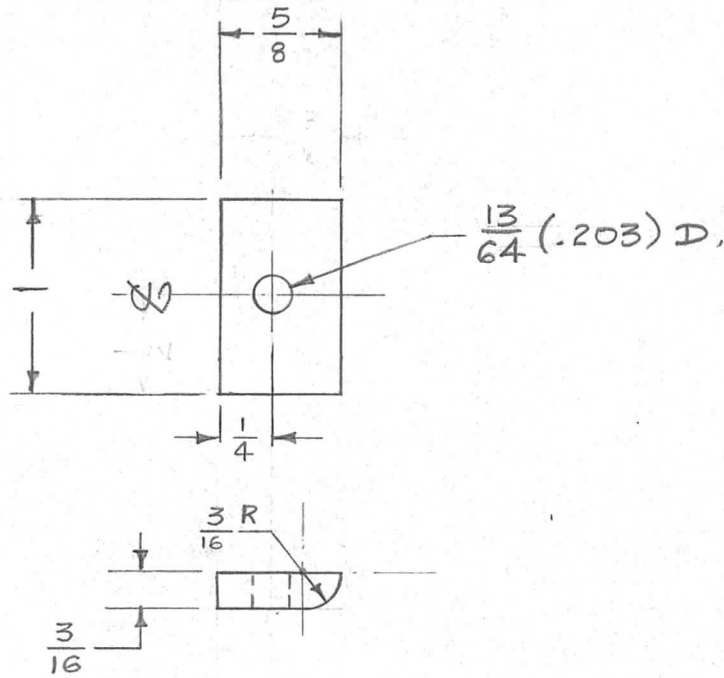


TMC NO.	"A" HOLE
PM-433-1	$\frac{1}{2}$ D
PM-433-2	$\frac{13}{64}$ D
PM-433-3	$\frac{17}{64}$ D

REQ. ITEM	PART NO.	DESCRIPTION	SYMBOL				
	$\frac{3}{16}$ THK. X 1" WIDE	THE TECHNICAL MATERIEL CORP. MAMARONECK, NEW YORK	A				
	STOCK SIZE						
	BRASS	END PLATE, STRAP, LARGE (TER-5000)					
	MATERIAL						
A	PM-433-3 ADDED	$\frac{1}{8}/59$ # J.C.B. <i>[Signature]</i> $\frac{6.6}{10/59}$					
ISSUE	ITEM	CHANGED FROM	DATE	CH. NO.	DRAFTS	CHECKER	ENG. APP.
TOLERANCES		SCALE: #					
DEC. DIM. $\pm$		MAXIMUM ALLOWABLE TOLERANCES HAVE BEEN DETERMINED AND ANY DEVIATIONS WILL BE CAUSE FOR REJECTION. REMOVE ALL BURRS AND SHARP EDGES					
FRAC. DIM. $\pm \frac{1}{64}$							
ANGULAR DIM. $\pm$		TYPE & TEMPER	HEAT TREAT. SPEC.	DRAWN	CHECKED	FINAL APPROVAL	
		#	#	$\frac{163-21-57$ <i>[Signature]</i>	<i>[Signature]</i>	PM-433 A	
		FINISH & SPEC. NO.	ELEC. DES. APP.	MECH. DES. APP.			

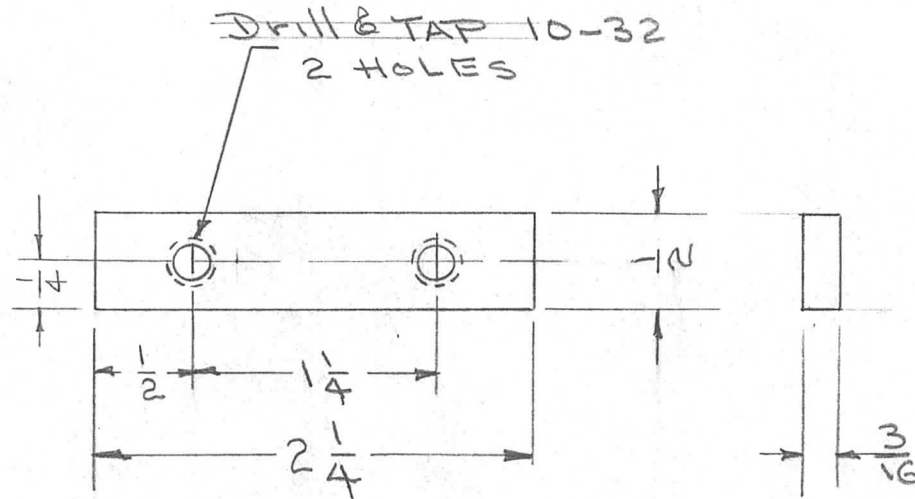
REQ. PER UNIT	USED ON		
	MODEL	ASS'Y. NO.	DATE
2	TER-5000	A-1404	3-22-57
2	TER-5000	A-1405	3-22-57

PM-434 B



ISSUE	ITEM	CHANGED FROM	DATE	CH. NO.	DRAFTS	CHECKER	ENG. APP.	REQ. ITEM	PART NO.	DESCRIPTION	SYMBOL		
B	2	1/4 DIM. ADDED VERTICAL & DELETED	7.6.64	11730	WB	<i>[Signature]</i>	<i>[Signature]</i>	3/16 THK. X 1" WIDE STOCK SIZE		THE TECHNICAL MATERIEL CORP. MAMARONECK. NEW YORK			
A	1	3/16R. WAS 3/8R.	9/14/61	5572	LL	AB	XB	BRASS		END PLATE, STRAP, SMALL (TER-5000)			
TOLERANCES								MATERIAL		63-22-57		MO	
DEC. DIM. ±			SCALE:					HALF HARD		DRAWN		CHECKED	
FRAC. DIM. ± 1/64			MAXIMUM ALLOWABLE TOLERANCES HAVE BEEN DETERMINED AND ANY DEVIATIONS WILL BE CAUSE FOR REJECTION. REMOVE ALL BURRS AND SHARP EDGES					HEAT TREAT. SPEC.		DRAWN		CHECKED	
ANGULAR DIM. ±								FINISH & SPEC. NO.		ELEC. DES. APP.		MECH. DES. APP.	

REQ. PER UNIT	USED ON			PM-435
	MODEL	ASS'Y. NO.	DATE	
8	TER-5000	A-1431(8)	3-25-57	



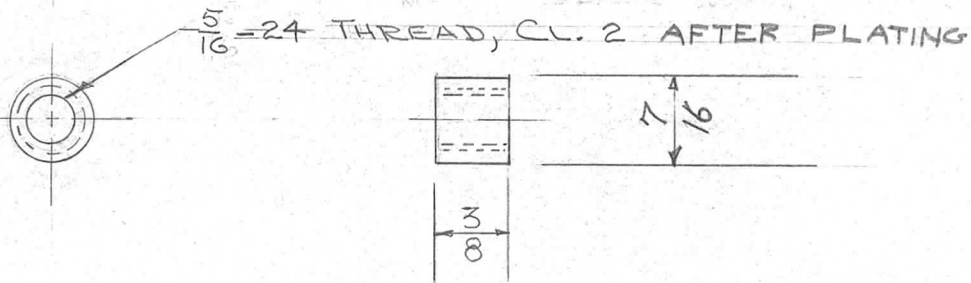
ISSUE	ITEM	CHANGED FROM	DATE	CH. NO.	DRAFTS	CHECKER	ENG. APP.	REQ. ITEM	PART NO.	DESCRIPTION	SYMBOL		
									3/16 x 1/2 Rectangular ROD STOCK SIZE	THE TECHNICAL MATERIEL CORP. MAMARONECK, NEW YORK			
									ALUMINUM	NUT, BAR			
									MATERIAL				
								G063-T5		<div style="display: flex; justify-content: space-between;"> <span>3/25/57</span> <span>3/25/57</span> </div>			
									TYPE & TEMPER	HEAT TREAT. SPEC.	DRAWN	CHECKED	FINAL APPROVAL
									S-101 Caustic Dip S-107 LACOVER				PM-435
									FINISH & SPEC. NO.	ELEC. DES. APP.	MECH. DES. APP.		

DEC. DIM. ±  
FRAC. DIM. ± V64  
ANGULAR DIM. ±

SCALE: //  
MAXIMUM ALLOWABLE TOLERANCES HAVE BEEN DETERMINED AND ANY DEVIATIONS WILL BE CAUSE FOR REJECTION.  
REMOVE ALL BURRS AND SHARP EDGES



REQ. PER UNIT	USED ON			PM 436
	MODEL	ASS'Y. NO.	DATE	
16	TER-5000	A-1431(8)		



ISSUE	ITEM	CHANGED FROM	DATE	CH. NO.	DRAFTS	CHECKER	ENG. APP.	REQ. ITEM	PART NO.	DESCRIPTION	SYMBOL		
									7/16 Round Rod	THE TECHNICAL MATERIEL CORP. MAMARONECK, NEW YORK			
									STOCK SIZE				
									BRASS	SPRING - GUIDE			
									MATERIAL				
								Free Turning		A.M.	AW	AW	
									TYPE & TEMPER	HEAT TREAT. SPEC.	DRAWN	CHECKED	FINAL APPROVAL
									Cad. .0005	Plate S-105			PM 4-36
									FINISH & SPEC. NO.	ELEC. DES. APP.	MECH. DES. APP.		

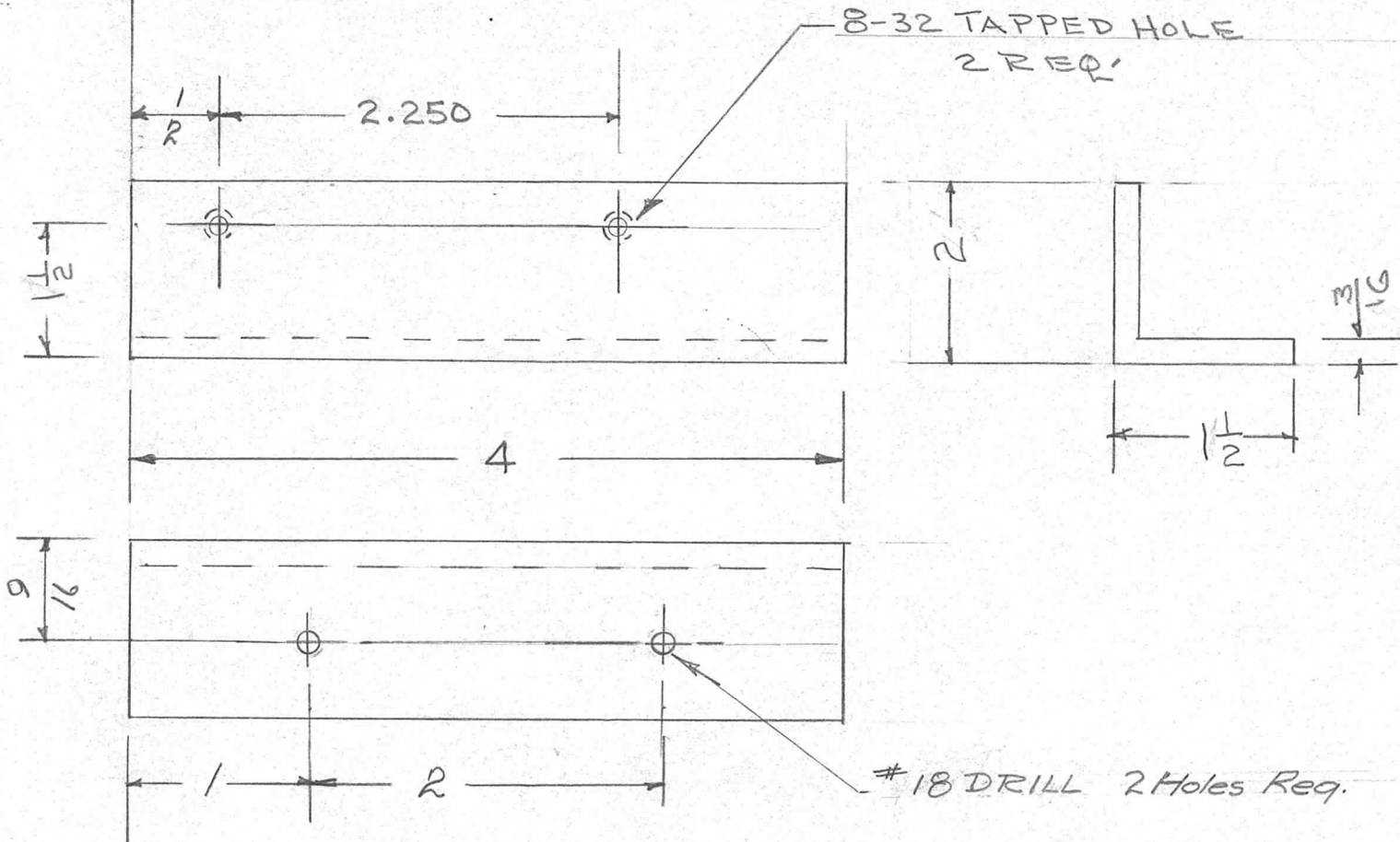
TOLERANCES

DEC. DIM. ±  
FRAC. DIM. ±  
ANGULAR DIM. ±

SCALE:

MAXIMUM ALLOWABLE TOLERANCES HAVE BEEN DETERMINED AND ANY DEVIATIONS WILL BE CAUSE FOR REJECTION.  
REMOVE ALL BURRS AND SHARP EDGES

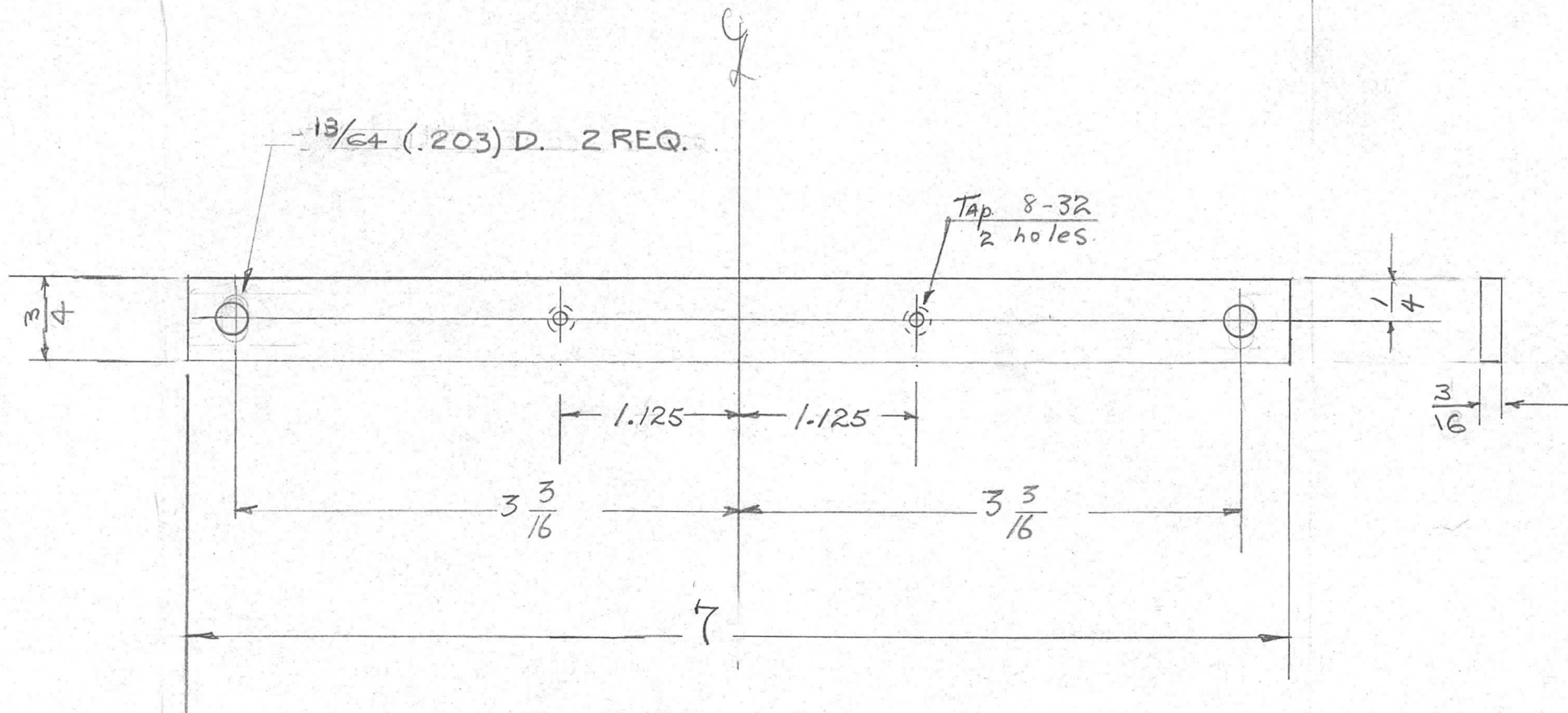
REQ. PER UNIT	USED ON			P14-437 D
	MODEL	ASS'Y. NO.	DATE	
1	A-1274			



ISSUE	ITEM	CHANGED FROM	DATE	CH. NO.	DRAFTS	CHECKER	ENG. APP.	REQ. ITEM	PART NO.	DESCRIPTION	SYMBOL		
D		DECIMAL DIMENSIONS ADDED	6/26/58	402									
C	1	COMPLETELY REVISED	5/13/58	3						THE TECHNICAL MATERIEL CORP. MAMARONECK, NEW YORK			
B	1	FINISH (CAD. PLATE) ADDED	7/26/57	2	SC.				2 X 1 1/2 X 3/16 <del>4</del>	FRONT SUPPORT			
A	2	FINISH DELETED	4/6/57	1	SC.				STOCK SIZE	POWER SUPPLY			
A	1	MATERIAL WAS ALUM							STRUCTURAL ALUMINUM				
TOLERANCES								MATERIAL					
SCALE:								GOGI-T6		DRAWN		CHECKED	
DEC. DIM. ± .005								TYPE & TEMPER		HEAT TREAT. SPEC.		FINAL APPROVAL	
FRAC. DIM. ± 1/64								S101 CAUSTIC DIP					
ANGULAR DIM. ±								S107 LACQUER DIP					
REMOVE ALL BURRS AND SHARP EDGES								FINISH & SPEC. NO.		ELEC. DES. APP.		MECH. DES. APP.	
										PM-437 D			

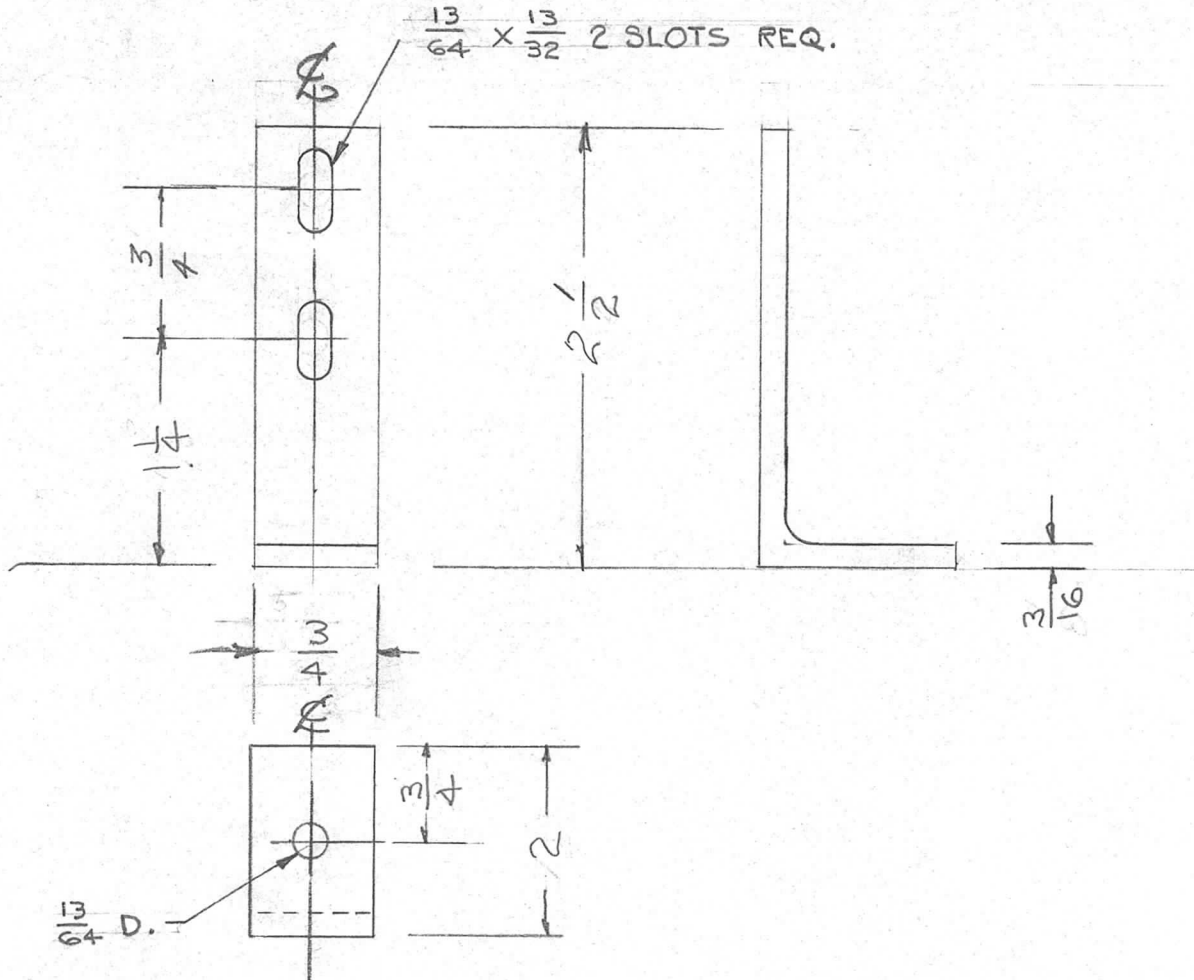


REQ. PER UNIT	USED ON			PM-439	D
	MODEL	ASS'Y. NO.	DATE		
1	A-1279				



ISSUE	ITEM	CHANGED FROM	DATE	CH. NO.	DRAFTS	CHECKER	ENG. APP.	REQ. ITEM	PART NO.	DESCRIPTION	SYMBOL		
D	1	DECIMAL DIMENSIONS ADDED	6/26/58	402	JLH								
C	1	STOCK SIZE WAS 1/8 X 1/2	5/13/58	3	JLH			3/16 X 3/4		THE TECHNICAL MATERIEL CORP. MAMARONECK, NEW YORK			
B	2	FINISH ADDED	8/9/57	2	FC	JLH		STOCK SIZE		BAR, NUT			
A	2	FINISH DELETED	6/6/57	1	SC	JLH		BRASS		A-1279			
A	1	MATERIAL WAS ALUM.											
TOLERANCES								MATERIAL					
DEC. DIM. ± .005								HALF HARD		am		am	
FRAC. DIM. ± 1/64								TYPE & TEMPER	HEAT TREAT. SPEC.	DRAWN	CHECKED	FINAL APPROVAL	
ANGULAR DIM. ±								5105 - CADMIUM PLATE .0002				PM-439	D
SCALE:								FINISH & SPEC. NO.	ELEC. DES. APP.	MECH. DES. APP.			
MAXIMUM ALLOWABLE TOLERANCES HAVE BEEN DETERMINED AND ANY DEVIATIONS WILL BE CAUSE FOR REJECTION.													
REMOVE ALL BURRS AND SHARP EDGES													

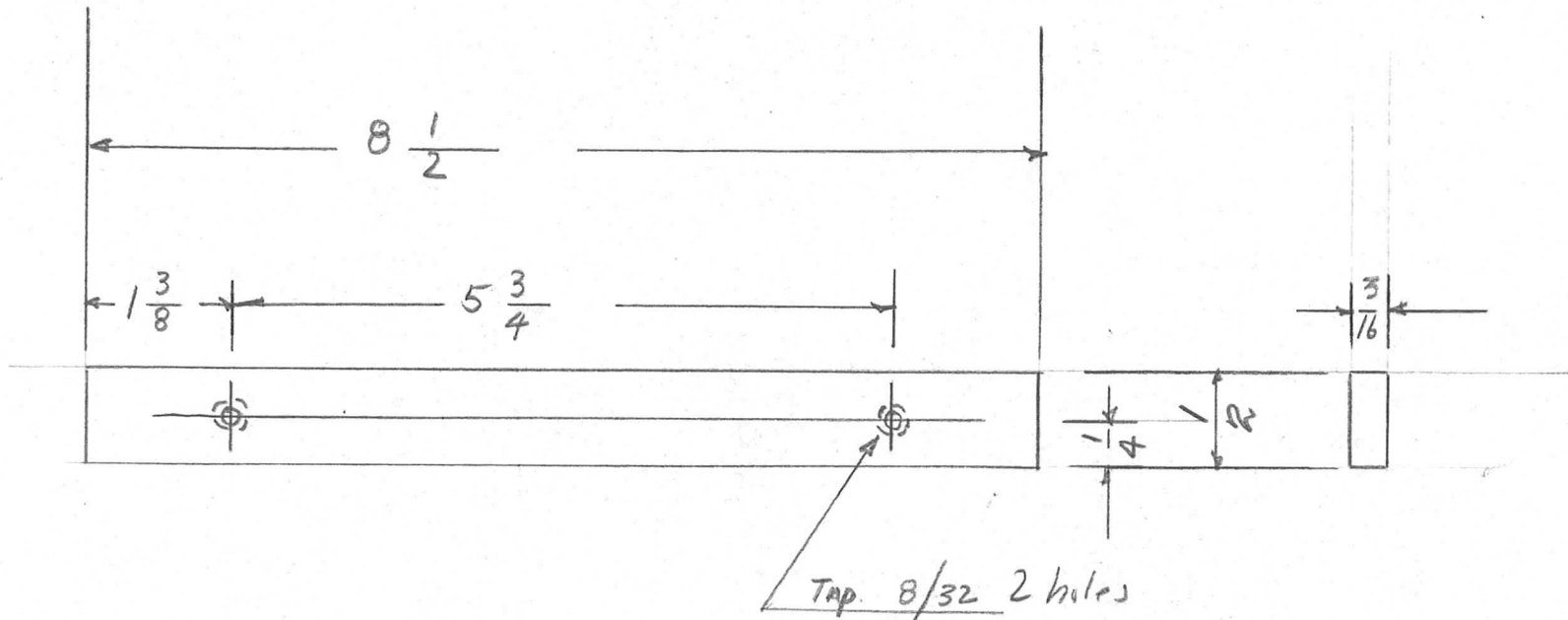
REQ. PER UNIT	USED ON			PM-440	A
	MODEL	ASS'Y. NO.	DATE		
2	A-1279				



ISSUE	ITEM	CHANGED FROM	DATE	CH. NO.	DRAFTS	CHECKER	ENG. APP.	REQ. ITEM	PART NO.	DESCRIPTION	SYMBOL				
										THE TECHNICAL MATERIEL CORP. MAMARONECK, NEW YORK					
								3/16		BAR Nut Support					
								STRUCTURAL ALUMINUM		A-1279					
B	1	COMPLETELY REVISED	5/13/58	1											
TOLERANCES								SCALE:							
DEC. DIM. ±								MAXIMUM ALLOWABLE TOLERANCES HAVE BEEN DETERMINED AND ANY DEVIATIONS WILL BE CAUSE FOR REJECTION.							
FRAC. DIM. ± 1/64								REMOVE ALL BURRS AND SHARP EDGES							
ANGULAR DIM. ±															
								6061-T6		DRAWN		CHECKED		FINAL APPROVAL	
								5101 Caustic Dip							
								5107 Lacquer							
								FINISH & SPEC. NO.		ELEC. DES. APP.		MECH. DES. APP.		PM-440 A	



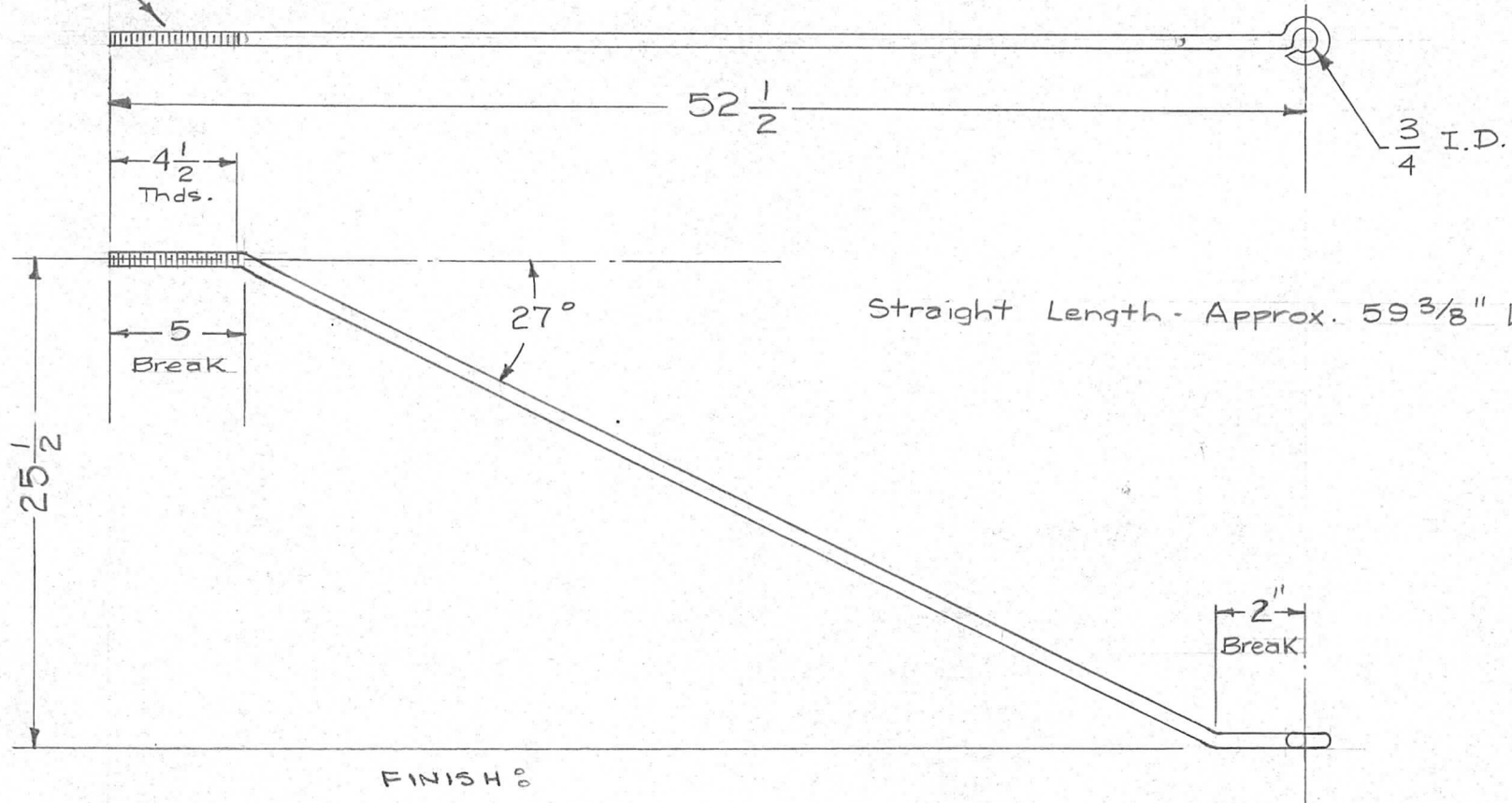
REQ. PER UNIT	USED ON			PM-443	A
	MODEL	ASS'Y. NO.	DATE		
R	A-1279	GP1-750D			



REQ.	ITEM	PART NO.	DESCRIPTION				SYMBOL
		3/16 Thick	THE TECHNICAL MATERIEL CORP.				
		STOCK SIZE	MAMARONECK. NEW YORK				
		BRASS	Panel Bar Nut				
		MATERIAL					
A	2	FINISH DELETED	6/6/57	1	SC.	JMS	ak
	1	MATERIAL WAS ALUM					
ISSUE	ITEM	CHANGED FROM	DATE	CH. NO.	DRAFTS	CHECKER	ENG. APP.
TOLERANCES			SCALE:				
DEC. DIM. $\pm$	FRAC. DIM. $\pm$	ANGULAR DIM. $\pm$	MAXIMUM ALLOWABLE TOLERANCES HAVE BEEN DETERMINED AND ANY DEVIATIONS WILL BE CAUSE FOR REJECTION. REMOVE ALL BURRS AND SHARP EDGES				
		HALF HARD					ak
		TYPE & TEMPER	HEAT TREAT. SPEC.	DRAWN	CHECKED	FINAL APPROVAL	
		Cadmium Plate	.0002			ak	
		FINISH & SPEC. NO.	ELEC. DES. APP.	MECH. DES. APP.	PM-443 A		

REQ. PER UNIT	USED ON			PM-444	B
	MODEL	ASS'Y. NO.	DATE		
2	TER-5000	ID-179	5-29-57		

$\frac{1}{2}$ -13 Thds. CLASS 2 FIT AFTER PLATING

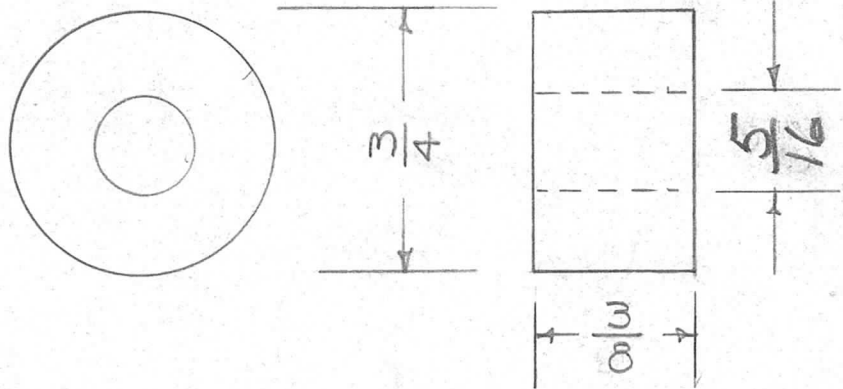


FINISH:  
S-371 Degrease  
S-105 Cadmium Plate

ISSUE	ITEM	CHANGED FROM	DATE	CH. NO.	DRAFTS	CHECKER	ENG. APP.	REQ. ITEM	PART NO.	DESCRIPTION	SYMBOL	
B	1	"FINISH" NOTE WAS: S-104 IRIDITE S-114 ZINC CHROMATE PRIMER S-115 SMOOTH GRAY ENAMEL	8-10-61	5391	G.D.K.	RU	<i>[Signature]</i>			THE TECHNICAL MATERIEL CORP. MAMARONECK, NEW YORK		
A	1	S 404 (IRIDITE) Added	5/9/59	-	JL		<i>[Signature]</i>			ROD, SUPPORT (TER-5000)		
TOLERANCES								SCALE:				
DEC. DIM. $\pm$ FRAC. DIM. $\pm$ ANGULAR DIM. $\pm$								MAXIMUM ALLOWABLE TOLERANCES HAVE BEEN DETERMINED AND ANY DEVIATIONS WILL BE CAUSE FOR REJECTION. REMOVE ALL BURRS AND SHARP EDGES				
								COLD ROLL		165-29-57	<i>[Signature]</i>	<i>[Signature]</i>
								TYPE & TEMPER	HEAT TREAT. SPEC.	DRAWN	CHECKED	FINAL APPROVAL
								SEE NOTE				
								FINISH & SPEC. NO.	ELEC. DES. APP.	MECH. DES. APP.	PM-444	B



REQ. PER UNIT	USED ON			PM-449
	MODEL	ASS'Y. NO.	DATE	
4	TLI-1	A-1438	6-19-57	

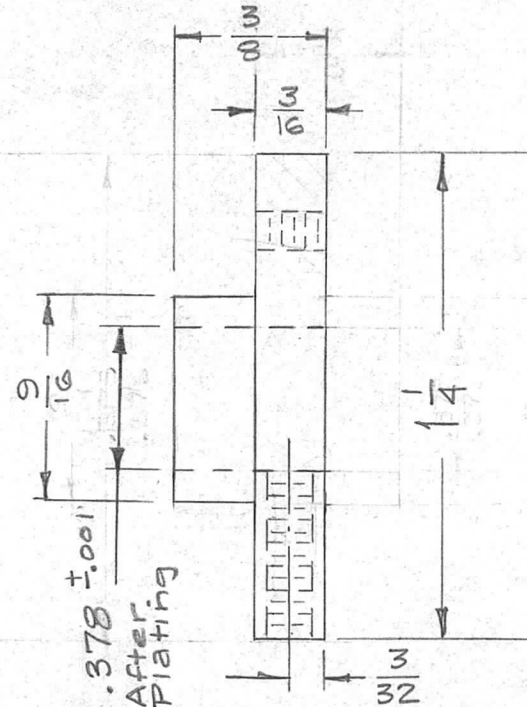
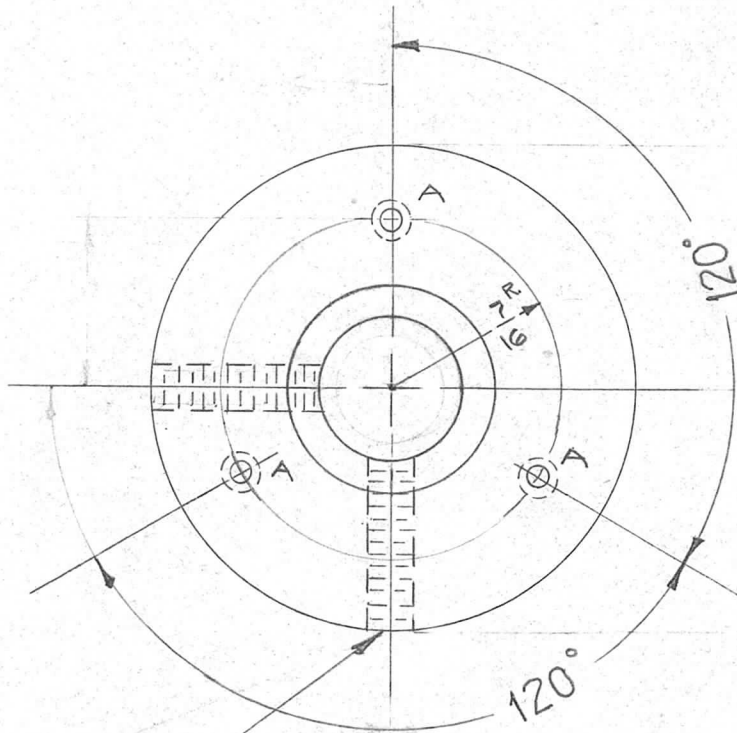


NOTE:  
 S101 - CAUSTIC DIP  
 S114 - PRIMER  
 S115 - TMC GRAY

REQ. ITEM	PART NO.	DESCRIPTION	SYMBOL
	3/4" ROUND ROD	THE TECHNICAL MATERIEL CORP.	
	STOCK SIZE	MAMARONECK, NEW YORK	
	ALUMINUM	STAND OFF BUSHING	
	MATERIAL		
ISSUE	ITEM	CHANGED FROM	DATE CH. NO. DRAFTS CHECKER ENG. APP.
TOLERANCES		SCALE:	
DEC. DIM. ±		MAXIMUM ALLOWABLE TOLERANCES HAVE BEEN DETERMINED AND ANY DEVIATIONS WILL BE CAUSE FOR REJECTION.	
FRAC. DIM. ±	1/64	REMOVE ALL BURRS AND SHARP EDGES	
ANGULAR DIM. ±		2024-T4	
	TYPE & TEMPER	HEAT TREAT. SPEC.	DRAWN
	SEE NOTE		CHECKED
	FINISH & SPEC. NO.	ELEC. DES. APP.	MECH. DES. APP.
			PM-449

REQ. PER UNIT	USED ON		
	MODEL	ASS'Y. NO.	DATE
1	SBE-1		7-17-57
1	SBE-2		5-5-58
1	SBE-3	AO-101	11-30-59

PM-451 A



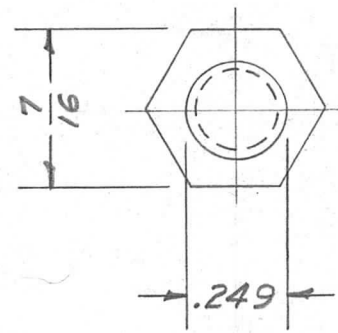
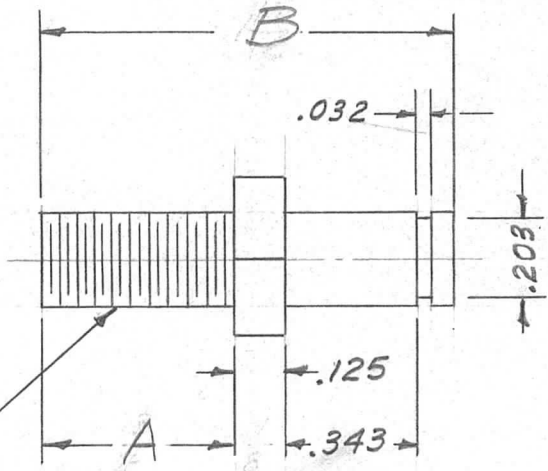
"A" DRILL & TAP 4-40 M.S. 3 REQ.

TAP 6-32 2 REQ.

REQ.	ITEM	PART NO.	DESCRIPTION				SYMBOL
		1/4 D.	THE TECHNICAL MATERIEL CORP.				
		STOCK SIZE	MAMARONECK, NEW YORK				
A	1	.378 ±.001 WAS .375/.376	9/6/57	1	16	2B	HUB, RF TUNING KNOB
ISSUE	ITEM	CHANGED FROM	DATE	CH. NO.	DRAFTS	CHECKER	ENG. APP.
TOLERANCES			SCALE:				
DEC. DIM. ±			MAXIMUM ALLOWABLE TOLERANCES HAVE BEEN DETERMINED AND ANY DEVIATIONS WILL BE CAUSE FOR REJECTION.				
FRAC. DIM. ±			REMOVE ALL BURRS AND SHARP EDGES				
ANGULAR DIM. ±							
			MATERIAL		7-17-57		
			TYPE & TEMPER		DRAWN		CHECKED
			HEAT TREAT. SPEC.		ELEC. DES. APP.		MECH. DES. APP.
			CADMIUM PLATE .0002		7-17-57		PM-451 A
			FINISH & SPEC. NO.		ELEC. DES. APP.		



TMC NO.	DIM. A	DIM. B	USED ON	QUAN.	ASS'Y.	REQ. PER UNIT	USED ON			PM-452	B
							MODEL	ASS'Y. NO.	DATE		
PM-452	3/8	15/16	SBE-1	1	A-1487				12-2-57		
PM-452-1	1/4	13/16	SBE-2	1	A-1517	1	SBE-2		5-5-58		
						1 (-1)	SBE-3	AP-100	11-30-59		

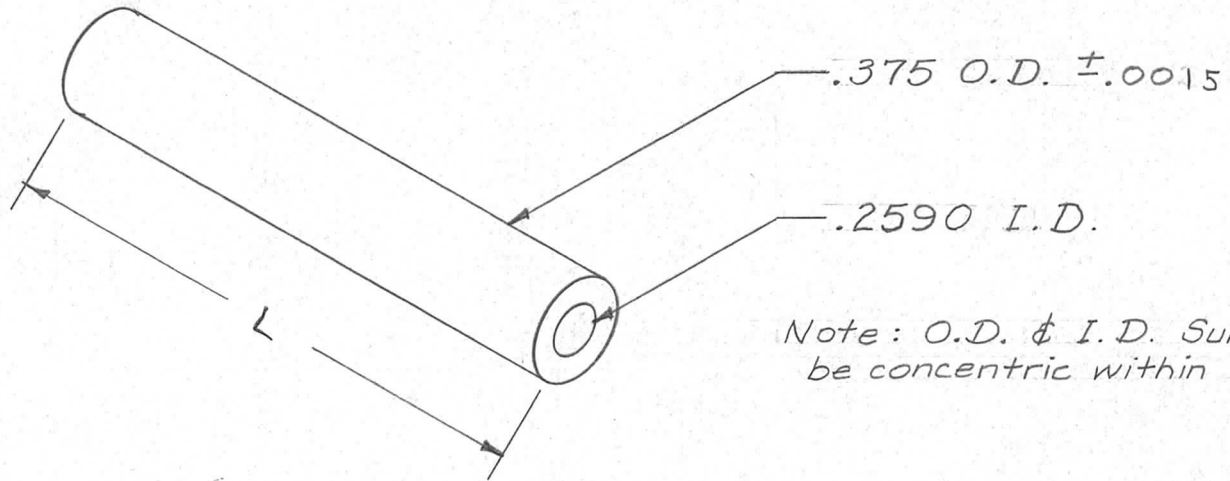


1/4-28 N.F. Cl. 2 Thds.

REQ.	ITEM	PART NO.	DESCRIPTION				SYMBOL
		7/16 HEX	THE TECHNICAL MATERIEL CORP.				
		STOCK SIZE	MAMARONECK, NEW YORK				
B	1	MADE INTO FAMILY Pm-452-1 Added	3/18/58	2	16	HADE	PMO
A	1	REDRAWN - CHANGED	12/2/57	1	16	HADE	PMO
ISSUE ITEM CHANGED FROM			DATE	CH. NO.	DRAFTS	CHECKER	ENG. APP.
TOLERANCES			SCALE: 2X				
DEC. DIM. ± .0015			MAXIMUM ALLOWABLE TOLERANCES HAVE BEEN DETERMINED AND ANY DEVIATIONS WILL BE CAUSE FOR REJECTION. REMOVE ALL BURRS AND SHARP EDGES				
FRAC. DIM. ± 1/64							
ANGULAR DIM. ±							
Free Turning		— H —	16/12/2/57	HADE	PMO	RE'DRAWN CHECKED FINAL APPROVAL	
TYPE & TEMPER		HEAT TREAT. SPEC.	ELEC. DES. APP.		MECH. DES. APP.		
FINISH & SPEC. NO.		ELEC. DES. APP.		MECH. DES. APP.		PM-452	B

# STANDARD DRAWING

REQ. PER UNIT	USED ON			PM-454	B
	MODEL	ASS'Y. NO.	DATE		



Note: O.D. & I.D. Surfaces must be concentric within .005

NOMENCLATURE SHALL BE IN THE FOLLOWING FORM

EXAMPLES:

PM-454 - .75 = SHAFT 3/4" LONG  
 PM-454 - 1.75 = SHAFT 1 3/4" LONG

PM-454 - "L"

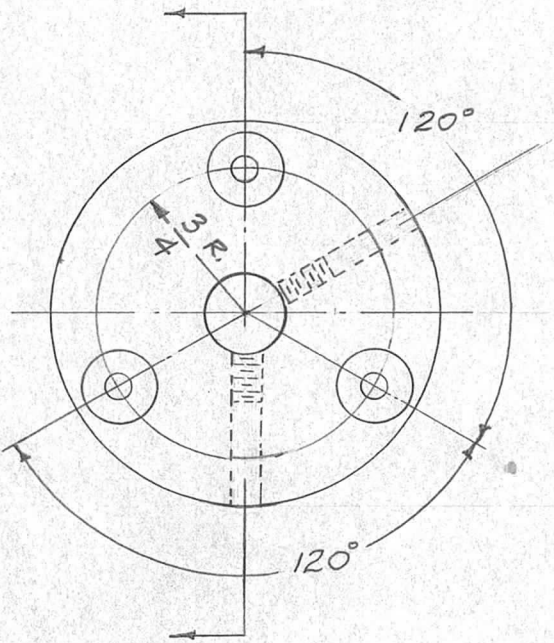
TMC DWG. NO.

LENGTH (IN INCHES)  
(SEE EXAMPLES)

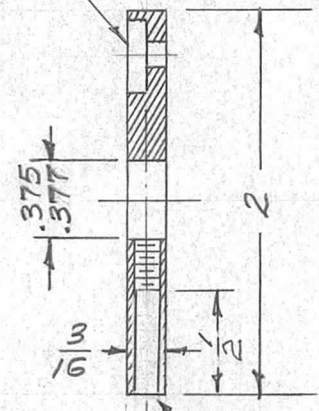
Ref - T.E. CONKLIN # 15 B & S HARD ROUND

REQ. ITEM	PART NO.	DESCRIPTION	SYMBOL				
	3/8 O.D.	THE TECHNICAL MATERIEL CORP. MAMARONECK, NEW YORK	SHAFT, HOLLOW				
	STOCK SIZE						
	BRASS						
	MATERIAL						
B 1	.375 ± .0015 WAS .375 ± .002	11/18/60	1781				
A 1	Nomenclature Clarified	11/21/57	1				
ISSUE	ITEM	CHANGED FROM	DATE	CH. NO.	DRAFTS	CHECKER	ENG. APP.
TOLERANCES		SCALE:					
DEC. DIM. ±		MAXIMUM ALLOWABLE TOLERANCES HAVE BEEN DETERMINED AND ANY DEVIATIONS WILL BE CAUSE FOR REJECTION.					
FRAC. DIM. ±		REMOVE ALL BURRS AND SHARP EDGES					
ANGULAR DIM. ±							
FREE TURNING		— # —		167-18-57		E.O.B.	
TYPE & TEMPER		HEAT TREAT. SPEC.		DRAWN		CHECKED	
— # —		— # —		E.O.B.		RWP	
FINISH & SPEC. NO.		ELEC. DES. APP.		MECH. DES. APP.		PM-454 B	

REQ. PER UNIT	USED ON			PM-455	C
	MODEL	ASS'Y. NO.	DATE		
1	SBE-1	A-1442	7-19-57		
1	SBE-2	A-1442	5-5-58	A-1442	
1	SBE-3	A-1442	11-30-59	A-1442	



Drill  $.128$  D. (No. 30) & c'bore  $\frac{3}{8}$  (.375) D. x  $\frac{3}{32}$  Deep  
3 Req.



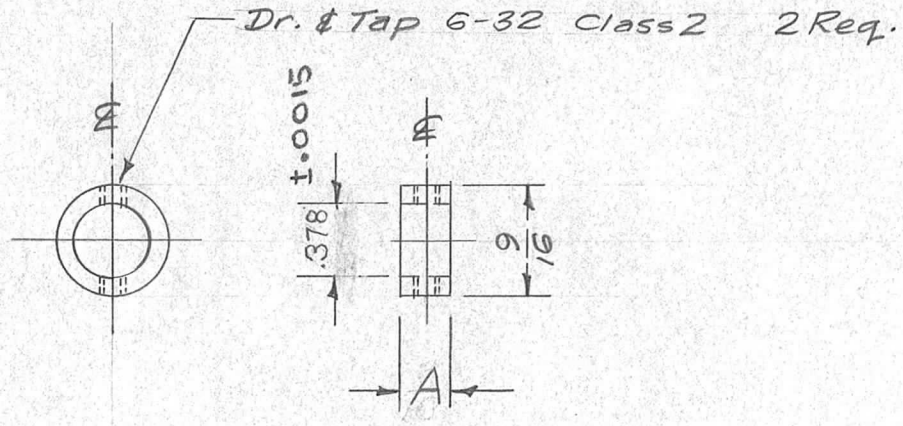
c'bore  $\frac{9}{64}$  (.140) D. x  $\frac{1}{2}$  Deep,  
Drill & Tap 6-32, Class 2 2 Req.

ISSUE	ITEM	CHANGED FROM	DATE	CH. NO.	DRAFTS	CHECKER	ENG. APP.	REQ. ITEM	PART NO.	DESCRIPTION	SYMBOL	
C	1	FINISH WAS S101 & S107	2-27-61	4488	W.A.F.	JCB	[Signature]	3/16 x 2" D.		THE TECHNICAL MATERIEL CORP.		
B	1	C'BORE Added	2/6/58	2	JCB	[Signature]	[Signature]	STOCK SIZE		MAMARONECK, NEW YORK		
A	1	.375 ID WAS .378 .377	12/19/57	1	[Signature]	[Signature]	[Signature]	ALUMINUM		HUB, MF DIAL		
TOLERANCES								MATERIAL		SBE		
SCALE: Full			2024-T3		16 7-19-57		[Signature]		[Signature]			
DEC. DIM. $\pm$			MAXIMUM ALLOWABLE TOLERANCES HAVE BEEN DETERMINED AND ANY DEVIATIONS WILL BE CAUSE FOR REJECTION.		TYPE & TEMPER		HEAT TREAT. SPEC.		DRAWN		CHECKED	FINAL APPROVAL
FRAC. DIM. $\pm$ 1/64			REMOVE ALL BURRS AND SHARP EDGES		S404 YELL. IRIDITE		[Signature]		RWB		PM-455	C
ANGULAR DIM. $\pm$					FINISH & SPEC. NO.		ELEC. DES. APP.		MECH. DES. APP.			



TMC NO.	DIM. "A"
PM-457-1	3/16
PM-457-2	1/4

REQ. PER UNIT	USED ON			PM-457	B
	MODEL	ASS'Y. NO.	DATE		
	SBE-2	A-517	7-19-57		
2(-1)	SBE-2	A-517	5-5-58		
2(-1)	SBE-3	AP-100	11-30-59	PM-451-1	

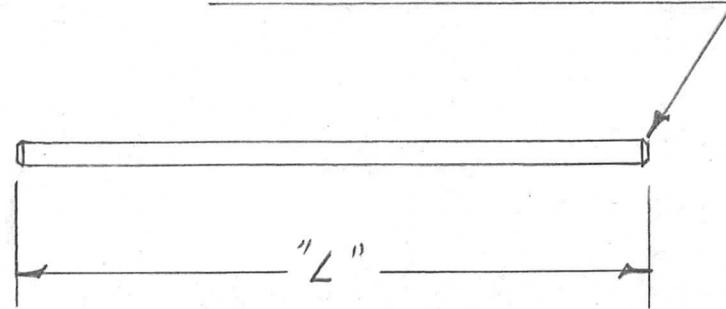


ISSUE	ITEM	CHANGED FROM	DATE	CH. NO.	DRAFTS	CHECKER	ENG. APP.	REQ. ITEM	PART NO.	DESCRIPTION	SYMBOL				
								3/8 ID 9/16 OD		THE TECHNICAL MATERIEL CORP. MAMARONECK. NEW YORK					
B	1	.378 ± .0015 WAS .376 .378	1/18/60	1785	W.F.	<i>[Signature]</i>	<i>[Signature]</i>	STOCK SIZE		COLLAR, FRICTION					
A	1	NO. CHG'D. TO FAMILY PM-457-2 WAS PM-457	9/18/57	1	16	<i>[Signature]</i>	<i>[Signature]</i>	BRASS		DRIVE SBE-1					
TOLERANCES								SCALE: FULL	1-10 14	FREE TURNING	11	16 7-19-57	RWB	<i>[Signature]</i>	
DEC. DIM. ±								TYPE & TEMPER		HEAT TREAT. SPEC.		DRAWN		CHECKED	
FRAC. DIM. ± 1/64								11		11		DB		DB	
ANGULAR DIM. ±								FINISH & SPEC. NO.		ELEC. DES. APP.		MECH. DES. APP.		PM-457 B	
MAXIMUM ALLOWABLE TOLERANCES HAVE BEEN DETERMINED AND ANY DEVIATIONS WILL BE CAUSE FOR REJECTION.															
REMOVE ALL BURRS AND SHARP EDGES															

MATERIAL	FINISH	SYMBOL	REQ. PER UNIT	USED ON		
				MODEL	ASS'Y. NO.	DATE
Aluminum 2024-T4	5101 Caustic Dip, 5107 Lacquer	A				PM 460 B
Brass Free Turn.	Natural	B				
Brass Free Turn.	5105 Cadmium Plate	BC				
Bakelite	Black XXXP	BB				
Phenolic	Natural XXXP	P				
Stainless Steel #303	5104 Passivate	SS				

# STANDARD DRAWING

Bevel both ends -  $\frac{1}{16} \times 45^\circ$



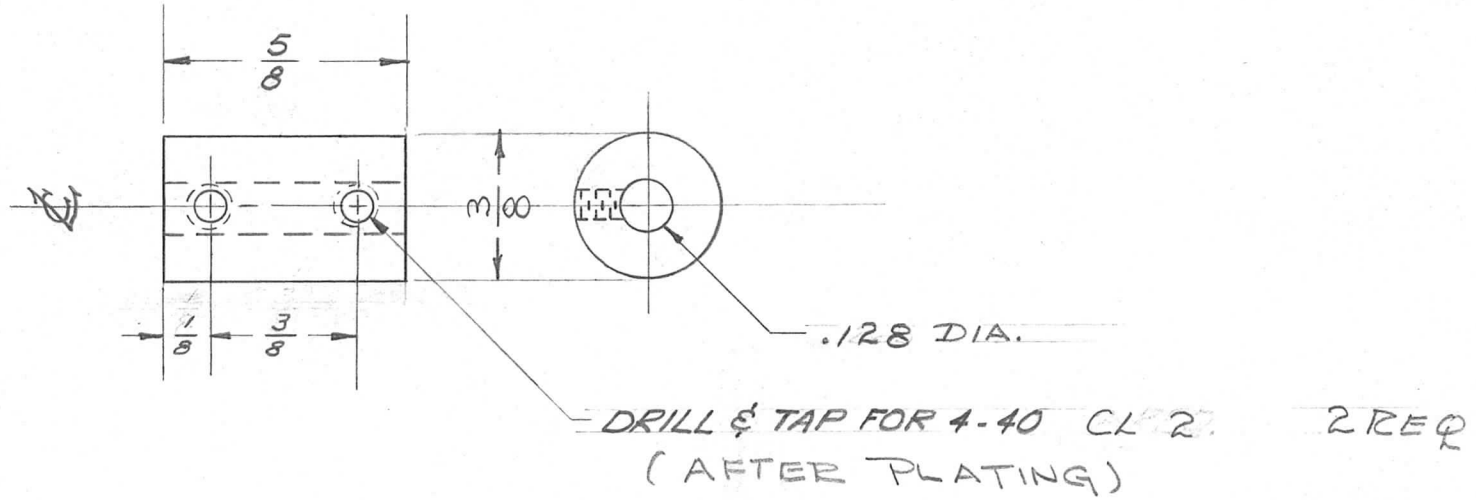
Nomenclature to be as follows:

PM 460-5.00 BC  
 TMC DWG NO.      LENGTH ("L")      MATERIAL  
    in inches      (See Chart)

REQ.	ITEM	PART NO.	DESCRIPTION				SYMBOL
		$\frac{1}{8} (.125) D \pm .005$	THE TECHNICAL MATERIEL CORP. MAMARONECK, NEW YORK				
		STOCK SIZE	SHAFT, .125 DIA.				
		SEE CHART					
		MATERIAL					
B		TOL ADDED TO STK SIZE	6.20.66	16429	W40	CB	
A	1	REDWN. - CHG'D. TO FAMILY	10/29/57	1	16	HL	
ISSUE	ITEM	CHANGED FROM	DATE	CH. NO.	DRAFTS	CHECKER	ENG. APP.
TOLERANCES			SCALE:				
DEC. DIM. $\pm$			MAXIMUM ALLOWABLE TOLERANCES HAVE BEEN DETERMINED AND ANY DEVIATIONS WILL BE CAUSE FOR REJECTION. REMOVE ALL BURRS AND SHARP EDGES				
FRAC. DIM. $\pm$							
ANGULAR DIM. $\pm$							
TYPE & TEMPER		HEAT TREAT. SPEC.	DRAWN		CHECKED	FINAL APPROVAL	
SEE CHART						PM 460 B	
FINISH & SPEC. NO.			ELEC. DES. APP.	MECH. DES. APP.			

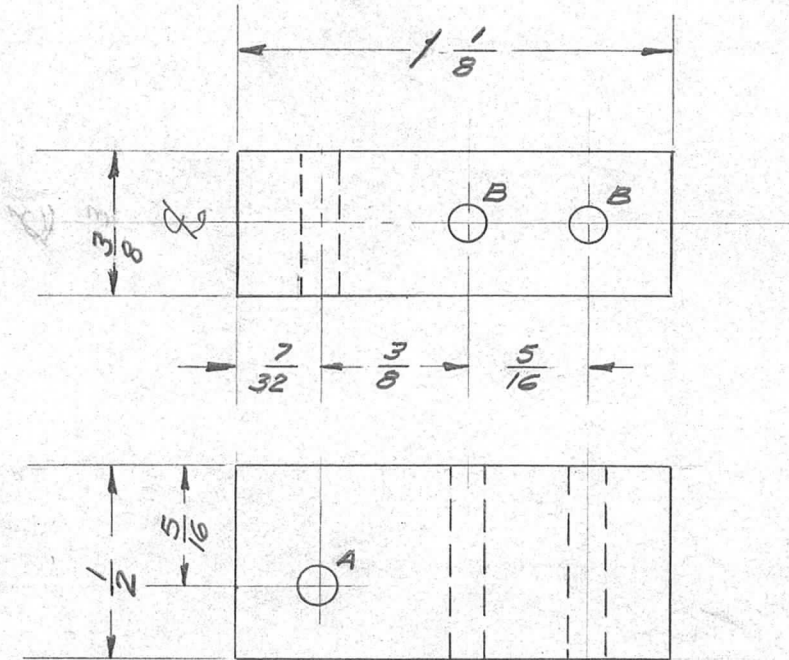


REQ. PER UNIT	USED ON			PM-461	A
	MODEL	ASS'Y. NO.	DATE		
1	GPR 90 RX		8-22-57		



ISSUE	ITEM	CHANGED FROM	DATE	CH. NO.	DRAFTS	CHECKER	ENG. APP.	REQ. ITEM	PART NO.	DESCRIPTION	SYMBOL	
								3/8 ROD		THE TECHNICAL MATERIEL CORP.		
								STOCK SIZE		MAMARONECK, NEW YORK		
A	1	.128 was .1265	10/23/57	1	1	16	AMB	BRASS		COUPLING		
								MATERIAL		GPR 90 RX		
TOLERANCES			SCALE:					free turning	8-22-57	AMB		
DEC. DIM. ± FRAC. DIM. ± ANGULAR DIM. ±			MAXIMUM ALLOWABLE TOLERANCES HAVE BEEN DETERMINED AND ANY DEVIATIONS WILL BE CAUSE FOR REJECTION. REMOVE ALL BURRS AND SHARP EDGES					TYPE & TEMPER CADMIUM PLATED S-105	HEAT TREAT. SPEC.	DRAWN	CHECKED	FINAL APPROVAL
								FINISH & SPEC. NO.	ELEC. DES. APP.	MECH. DES. APP.	PM-461	A

REQ. PER UNIT	USED ON			PM-462	D
	MODEL	ASS'Y. NO.	DATE		
1	GPR 90 RX		8-22-57		

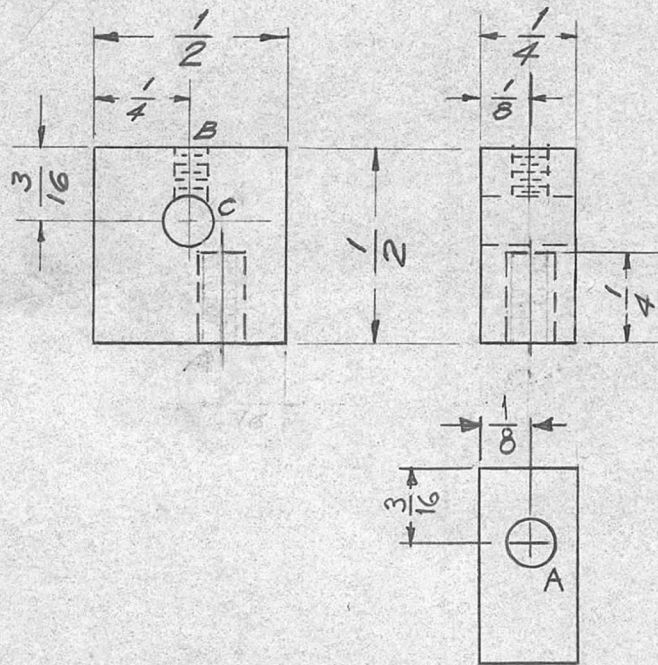


**LEGEND**

A -  $\frac{.138}{.133}$  D. 1 REQ.  
 B -  $\frac{3}{16}$  (.1875) 2 REQ.

ISSUE	ITEM	CHANGED FROM	DATE	CH. NO.	DRAFTS	CHECKER	ENG. APP.	REQ. ITEM	PART NO.	DESCRIPTION	SYMBOL	
D		"A" HOLE WAS .128D	6.20.66	16429	WTH	JCB	SC					
C	1	FINISH WAS S101 & S107	8-14-63	9762	AR.	JAB	VD		3/8 X 1/2 BAR	THE TECHNICAL MATERIEL CORP. MAMARONECK, NEW YORK		
B	1	"A" Hole was .1265 D "B" Hole was 1/8 D	10/25/57	2	HQ	KB	AK		STOCK SIZE	SHAFT, SUPPORT		
A	1	"B" Holes Were 3/32	9-26-57	1	SC.	HQ	AK		ALUMINUM	GPR 90 RX		
TOLERANCES								MATERIAL				
DEC. DIM. ±			SCALE:					5052-432	SC. 822/57	JAB	JM	ATJ
FRAC. DIM. ± 1/64			MAXIMUM ALLOWABLE TOLERANCES HAVE BEEN DETERMINED AND ANY DEVIATIONS WILL BE CAUSE FOR REJECTION. REMOVE ALL BURRS AND SHARP EDGES					TYPE & TEMPER	HEAT TREAT. SPEC.	DRAWN	CHECKED	FINAL APPROVAL
ANGULAR DIM. ±								S404 YELLOW IRIDITE	P.L.K.			PM-462
								FINISH & SPEC. NO.	ELEC. DES. APP.	MECH. DES. APP.		

REQ. PER UNIT	USED ON			PM-463	C
	MODEL	ASS'Y. NO.	DATE		
1	GPR-90-RX	A-1480	8-28-57		



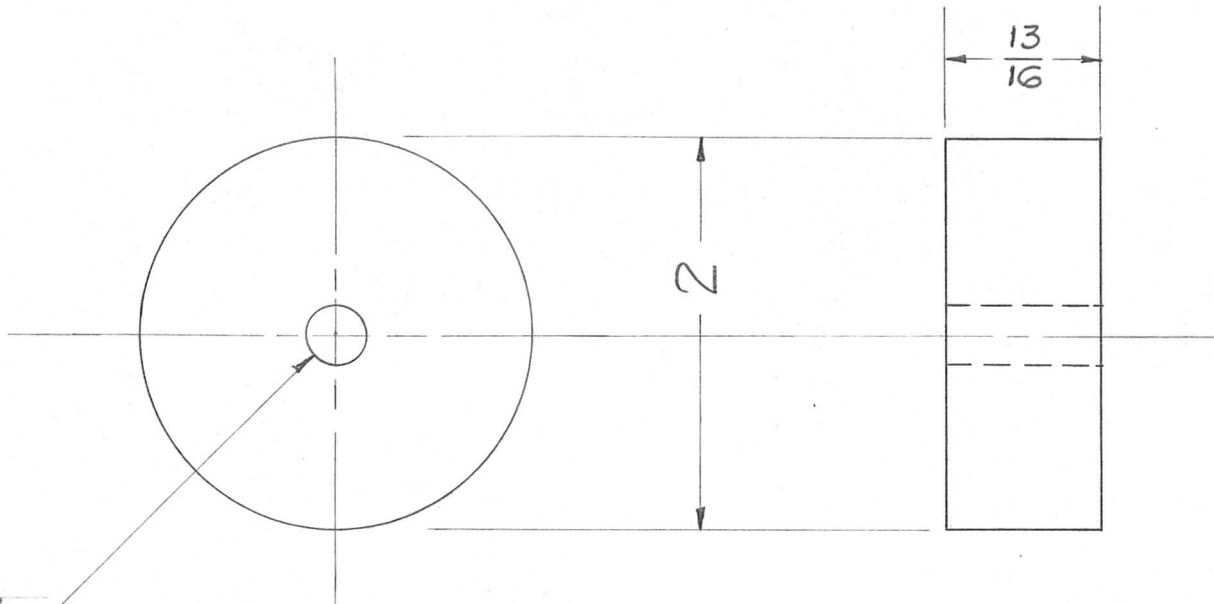
### LEGEND

- A. .126 DIA. (PRESS FIT FOR PN-112) 1 REQ.
- B. DRILL & TAP 4-40 CLASS 2 1 REQ.  
(AFTER PLATING)
- C #30 DR. (.128) 1 REQ.

ISSUE	ITEM	CHANGED FROM	DATE	CH. NO.	DRAFTS	CHECKER	ENG. APP.	REQ. ITEM	PART NO.	DESCRIPTION	SYMBOL	
C	2	Added Bottom View For Clarity	6-20-61	5102	W.G.F.	J.C.B.	ETM			THE TECHNICAL MATERIEL CORP. MAMARONECK, NEW YORK	C	
B	1	Added Press Fit Note To "A" Hole DELETED FINISH (S-105 CADMIUM PLATE)	1-24-61	3961	P	J.C.B.	<del>ETM</del>		1/4 X 1/2 X 1/2 STOCK SIZE			
A		"B" WAS 2 REQ. "C" ADDED "A" HOLE WAS .125	10/29/67	1	16	W.G.F.	W.G.F.		BRASS			
								MATERIAL		SWITCH, LINKAGE ARM		
										GPR 90 RX		
TOLERANCES			SCALE: DO NOT SCALE					FREE TURNING		Se. 8-28-57	J.A.Q.	W.G.F. ATT
DEC. DIM. ±			MAXIMUM ALLOWABLE TOLERANCES HAVE BEEN DETERMINED AND ANY DEVIATIONS WILL BE CAUSE FOR REJECTION. REMOVE ALL BURRS AND SHARP EDGES					TYPE & TEMPER	HEAT TREAT. SPEC.	DRAWN	CHECKED	FINAL APPROVAL
FRAC. DIM. ± 1/64								FINISH & SPEC. NO.		ELEC. DES. APP.		MECH. DES. APP.
ANGULAR DIM. ±												



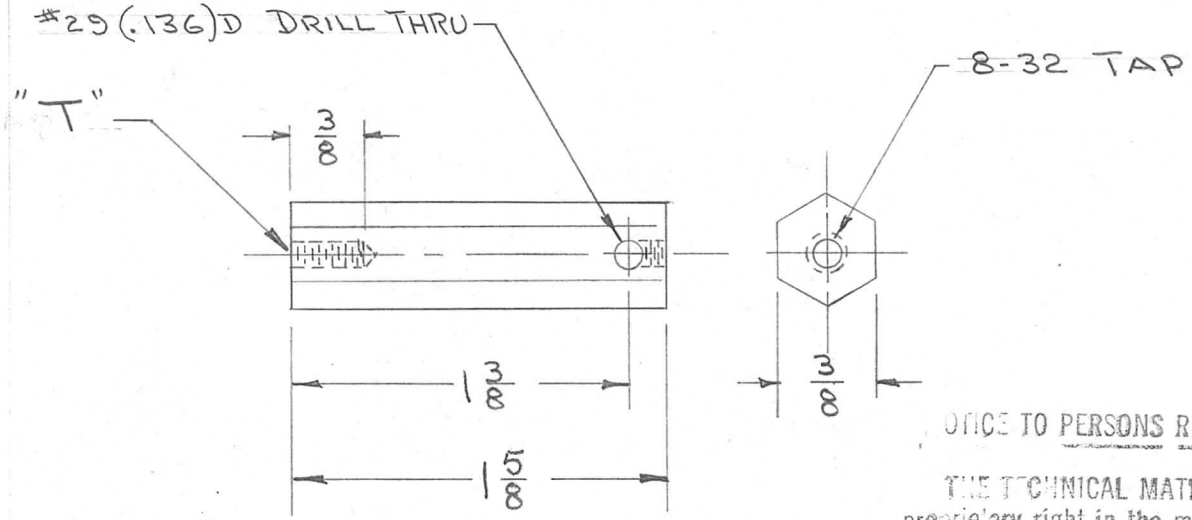
REQ. PER UNIT	USED ON			PM-464	Ø
	MODEL	ASS'Y. NO.	DATE		
4	MSR/GPR-90RX		9-17-57		



5/16(312) D. 1 Req.

ISSUE	ITEM	CHANGED FROM	DATE	CH. NO.	DRAFTS	CHECKER	ENG. APP.	REQ. ITEM	PART NO.	DESCRIPTION	SYMBOL	
								2" ROUND		THE TECHNICAL MATERIEL CORP. MAMARONECK, NEW YORK		
								STOCK SIZE				
Ø		ORIGINAL RELEASE	9/26/69		①			ALUMINUM		SHOCK MOUNT SPACER		
								MATERIAL				
TOLERANCES			SCALE:					2024-T4		KE, 9/18/57	APL	9/26/69
DEC. DIM. ±			MAXIMUM ALLOWABLE TOLERANCES HAVE BEEN DETERMINED AND ANY DEVIATIONS WILL BE CAUSE FOR REJECTION. REMOVE ALL BURRS AND SHARP EDGES					TYPE & TEMPER	HEAT TREAT. SPEC.	DRAWN	CHECKED	FINAL APPROVAL
FRAC. DIM. ± 1/64								FINISH & SPEC. NO.				
ANGULAR DIM. ±											PM-464 Ø	
										ELEC. DES. APP.	MECH. DES. APP.	

TMC NO.	"T"	USED ON	QUAN.	REQ. PER UNIT	USED ON			PM-466	A
PM-466	8-32				MODEL	ASS'Y. NO.	DATE		
PM-466-1	10-32	TER-3500-70 / TER-500-70	1		TER-3500-70	A-1472	10-18-57		
					TER-500-70	A-1475	16-18-57		



NOTICE TO PERSONS RECEIVING THIS DRAWING

THE TECHNICAL MATERIEL CORPORATION claims proprietary right in the material disclosed hereon. This drawing is issued in confidence for engineering information only and may not be reproduced or used to manufacture anything shown hereon without permission from THE TECHNICAL MATERIEL CORPORATION to the user. This drawing is loaned for mutual assistance and is subject to recall at any time.

Property of:

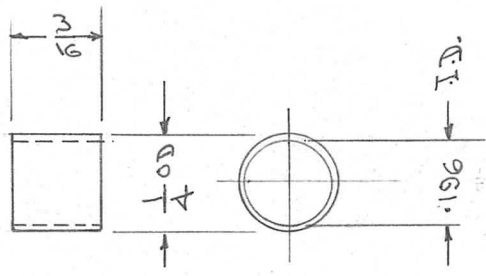
THE TECHNICAL MATERIEL CORPORATION  
MAMARONECK, NEW YORK

ISSUE	ITEM	CHANGED FROM	DATE	CH. NO.	DRAFTS	CHECKER	ENG. APP.	REQ. ITEM	PART NO.	DESCRIPTION	SYMBOL					
								3/8 D	HEX. ROD	THE TECHNICAL MATERIEL CORP. MAMARONECK, NEW YORK	Post, SPARK ROD					
									STOCK SIZE							
									BRASS							
									MATERIAL							
A	1	PM-466-1 Added (10-32 Thds)	4/23/52	1	16		<i>[Signature]</i>	FREE TURNING		<i>[Signature]</i>	16	<i>[Signature]</i>				
TOLERANCES			SCALE: <i>[Symbol]</i>													
DEC. DIM. ±			MAXIMUM ALLOWABLE TOLERANCES HAVE BEEN DETERMINED AND ANY DEVIATIONS WILL BE CAUSE FOR REJECTION. REMOVE ALL BURRS AND SHARP EDGES					TYPE & TEMPER	HEAT TREAT. SPEC.	DRAWN	CHECKED	FINAL APPROVAL				
FRAC. DIM. ± <i>Y6A</i>								CADMIUM PLATED		<i>[Signature]</i>						
ANGULAR DIM. ±																
								FINISH & SPEC. NO.		ELEC. DES. APP.	MECH. DES. APP.	PM-466 A				



REQ. PER UNIT	USED ON		
	MODEL	ASS'Y. NO.	DATE
2	CAB/FR	A-1095	11-11-57
2	RTF	A-1095	11-11-57

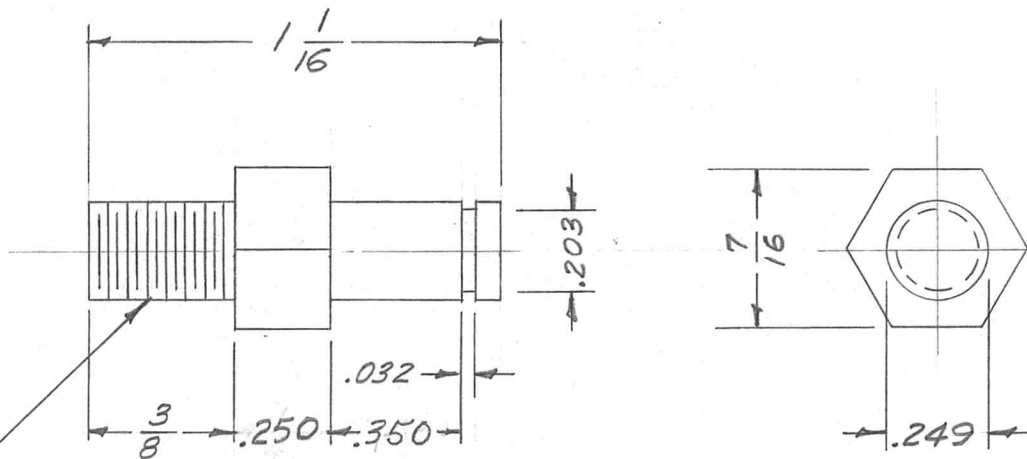
PM-469



REQ.	ITEM	PART NO.	DESCRIPTION		SYMBOL
			THE TECHNICAL MATERIEL CORP.		
			MAMARONECK, NEW YORK		
			STOCK SIZE		
			BRASS		
			MATERIAL		
			FREE TURNING	1/16	
			TYPE & TEMPER	HEAT TREAT. SPEC.	DRAWN
					CHECKED
					FINAL APPROVAL
					PM-469
			FINISH & SPEC. NO.	ELEC. DES. APP.	MECH. DES. APP.

ISSUE	ITEM	CHANGED FROM	DATE	CH. NO.	DRAFTS	CHECKER	ENG. APP.
TOLERANCES			SCALE:				
DEC. DIM. $\pm$ .015			MAXIMUM ALLOWABLE TOLERANCES HAVE BEEN DETERMINED AND ANY DEVIATIONS WILL BE CAUSE FOR REJECTION.				
FRAC. DIM. $\pm$			REMOVE ALL BURRS AND SHARP EDGES				
ANGULAR DIM. $\pm$							

REQ. PER UNIT	USED ON			PM-470	A
	MODEL	ASS'Y. NO.	DATE		
1	SBE-1	A-1487	12-2-57		
1	SBE-2	A-1517	5-5-58		
1	SBE-3	AP-100	11-30-59		



$\frac{1}{4}$ -28 NF Cl. 2 Thd.

ISSUE	ITEM	CHANGED FROM	DATE	CH. NO.	DRAFTS	CHECKER	ENG. APP.	REQ. ITEM	PART NO.	DESCRIPTION	SYMBOL
									7/16 Hex.	THE TECHNICAL MATERIEL CORP.	
									STOCK SIZE	MAMARONECK, NEW YORK	
A	1	.350 WAS .343	3/7/58	1	JL	15	CM		BRASS	SHAFT, GEAR,	
									MATERIAL	GR-133	
								FREE TURNING	— # —	1512-2-57	
									TYPE & TEMPER	CHECKED	
									HEAT TREAT. SPEC.		
									FINISH & SPEC. NO.	ELEC. DES. APP.	
										MECH. DES. APP.	
											PM-470 A

TOLERANCES

DEC. DIM.  $\pm$  .0015  
 FRAC. DIM.  $\pm$  1/64  
 ANGULAR DIM.  $\pm$

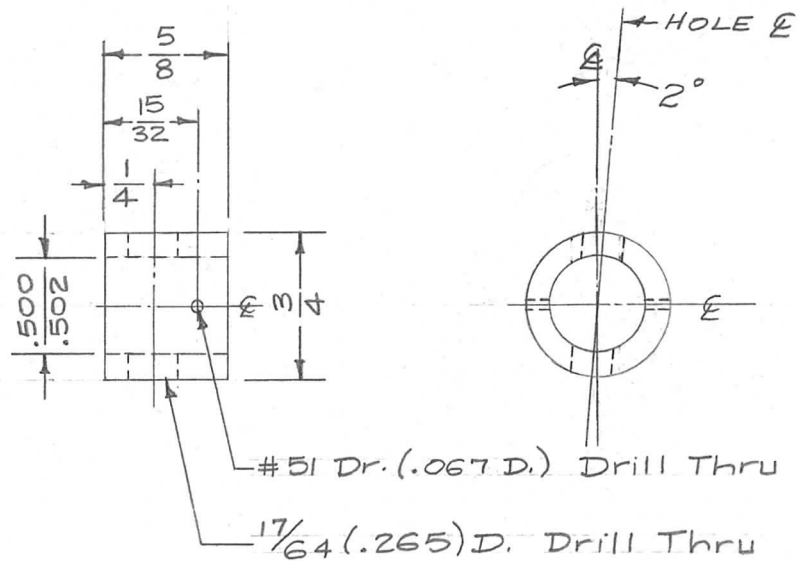
SCALE: 2X

MAXIMUM ALLOWABLE TOLERANCES HAVE BEEN DETERMINED AND ANY DEVIATIONS WILL BE CAUSE FOR REJECTION.  
 REMOVE ALL BURRS AND SHARP EDGES

PM-470 A

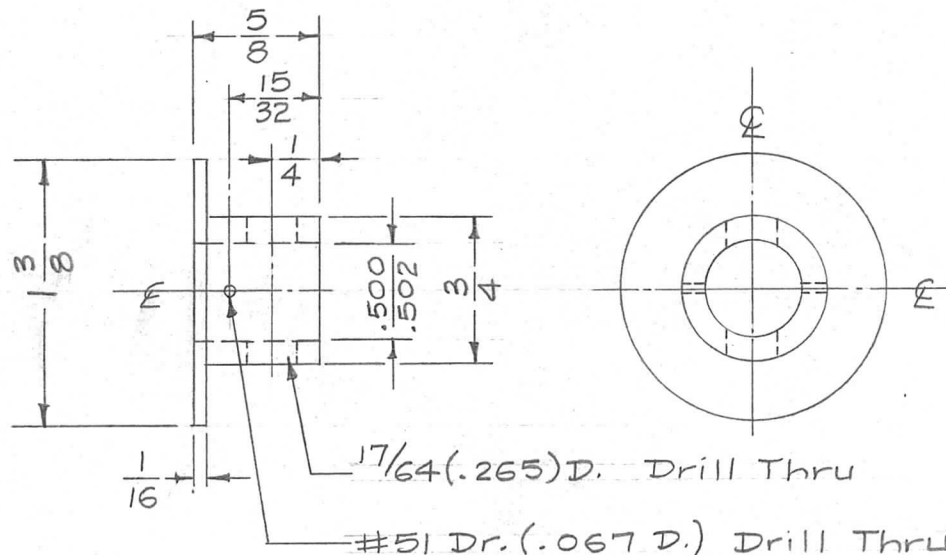


REQ. PER UNIT	USED ON			PM-473	A
	MODEL	ASS'Y. NO.	DATE		
1	ATS-50/70TU		12-18-57		



REQ.	ITEM	PART NO.	DESCRIPTION				SYMBOL
		3/4 O.D.	THE TECHNICAL MATERIEL CORP.				
		STOCK SIZE	MAMARONECK, NEW YORK				
		BRASS	COLLAR, DRIVE SHAFT				
		MATERIAL					
A	1	HOLE & SHIFTED 2° OFF OF PIECE &	3/31/58	1	16	SPF	JOR
ISSUE	ITEM	CHANGED FROM	DATE	CH. NO.	DRAFTS	CHECKER	ENG. APP.
TOLERANCES			SCALE: FULL				
DEC. DIM. ±			MAXIMUM ALLOWABLE TOLERANCES HAVE BEEN DETERMINED AND ANY DEVIATIONS WILL BE CAUSE FOR REJECTION.				
FRAC. DIM. ± 1/64			REMOVE ALL BURRS AND SHARP EDGES				
ANGULAR DIM. ± .5°							
HALF HARD		N	16	12/18/57	SPF	JOR	
TYPE & TEMPER		HEAT TREAT. SPEC.	DRAWN		CHECKED		FINAL APPROVAL
S245 SILVER PLATE		.0005	JOR		SPF		PM-473
FINISH & SPEC. NO.		ELEC. DES. APP.	MECH. DES. APP.		A		

REQ. PER UNIT	USED ON		PM-474
	MODEL	ASS'Y. NO.	
1	ATS-TU		12-18-57
1	ATS-50(70)TU2		6-8-59



FINISH: S-245 SILVER PLATE .0005  
 S-423 IRIDITE 18-P SILVER KOTE

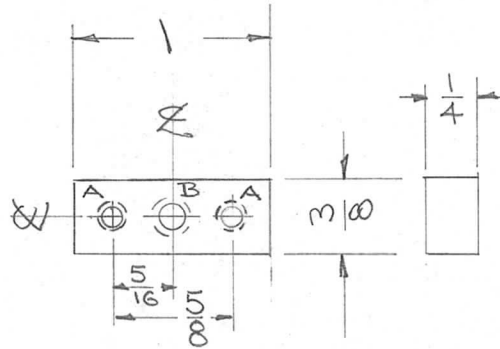
ISSUE	ITEM	CHANGED FROM	DATE	CH. NO.	DRAFTS	CHECKER	ENG. APP.	REQ. ITEM	PART NO.	DESCRIPTION	SYMBOL	
										THE TECHNICAL MATERIEL CORP. MAMARONECK, NEW YORK COLLAR, CONTACT SPRING		
									STOCK SIZE			
									BRASS			
									MATERIAL			
								HALF HARD	N	16 <sup>12/18/57</sup>	HAID	AKS
								TYPE & TEMPER	HEAT TREAT. SPEC.	DRAWN	CHECKED	FINAL APPROVAL
								SEE NOTE		25R	SAH	PM-474
								FINISH & SPEC. NO.		ELEC. DES. APP.	MECH. DES. APP.	

TOLERANCES  
 DEC. DIM. ±  
 FRAC. DIM. ± 1/64  
 ANGULAR DIM. ±

SCALE: FULL  
 MAXIMUM ALLOWABLE TOLERANCES HAVE BEEN DETERMINED AND ANY DEVIATIONS WILL BE CAUSE FOR REJECTION.  
 REMOVE ALL BURRS AND SHARP EDGES



REQ. PER UNIT	USED ON			PM-475
	MODEL	ASS'Y. NO.	DATE	



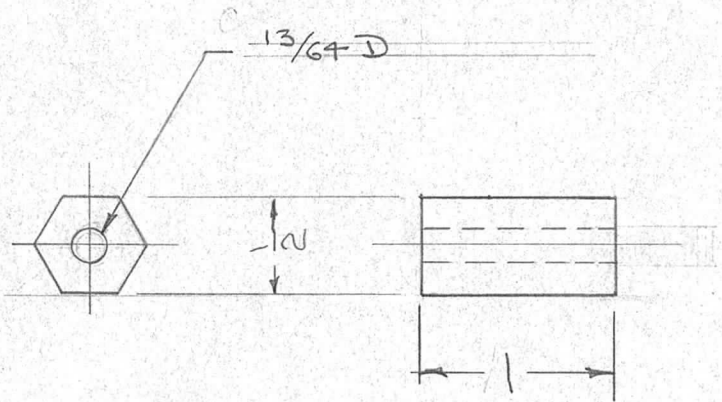
A- DRILL & TAP 6-32 - 2 REQ  
 B- DRILL & TAP 8-32 - 1 REQ

ISSUE	ITEM	CHANGED FROM	DATE	CH. NO.	DRAFTS	CHECKER	ENG. APP.	REQ.	ITEM	PART NO.	DESCRIPTION	SYMBOL	
										1/4 x 3/8 HEX.	THE TECHNICAL MATERIEL CORP. MAMARONECK, NEW YORK		
										STOCK SIZE		SPACER	
										BRASS			
										MATERIAL			
										HALF HARD	DRAWN: JAD 12/20 CHECKED: 16 12/20/57 FINAL APPROVAL: [Signature]		
										TYPE & TEMPER	ELEC. DES. APP. [Signature] MECH. DES. APP. [Signature]		
										HEAT TREAT. SPEC.			
										CADMIUM PLATE .0002			
										FINISH & SPEC. NO.			
											PM-475		

TOLERANCES  
 DEC. DIM. ±  
 FRAC. DIM. ± 1/64  
 ANGULAR DIM. ±

SCALE: #  
 MAXIMUM ALLOWABLE TOLERANCES HAVE BEEN DETERMINED AND ANY DEVIATIONS WILL BE CAUSE FOR REJECTION.  
 REMOVE ALL BURRS AND SHARP EDGES

REQ. PER UNIT	USED ON			PM-476
	MODEL	ASS'Y. NO.	DATE	
4	RTP	(S-351)	1-16-58	



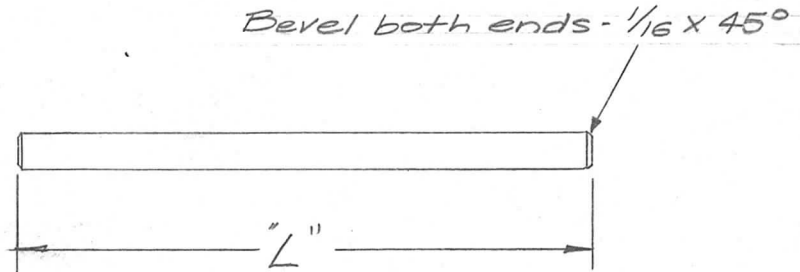
ISSUE	ITEM	CHANGED FROM	DATE	CH. NO.	DRAFTS	CHECKER	ENG. APP.	REQ. ITEM	PART NO.	DESCRIPTION	SYMBOL	
								1/2 HEX ROD		THE TECHNICAL MATERIEL CORP.		
								STOCK SIZE		MAMARONECK, NEW YORK		
								BRASS		SPACER, RELAY CHASSIS		
								MATERIAL				
								FREE TURNING				
								TYPE & TEMPER	HEAT TREAT. SPEC.	DRAWN	CHECKED	FINAL APPROVAL
								CADMIUM PLATED				
								S-105	.0002			
								FINISH & SPEC. NO.		ELEC. DES. APP.	MECH. DES. APP.	PM-476

TOLERANCES  
 DEC. DIM. ±  
 FRAC. DIM. ± 1/64  
 ANGULAR DIM. ±

SCALE: FULL  
 MAXIMUM ALLOWABLE TOLERANCES HAVE BEEN DETERMINED AND ANY DEVIATIONS WILL BE CAUSE FOR REJECTION.  
 REMOVE ALL BURRS AND SHARP EDGES

DATE: 1/16/58  
 DRAWN: [Signature]  
 CHECKED: [Signature]  
 FINAL APPROVAL: [Signature]

MATERIAL	FINISH	SYMBOL	REQ. PER UNIT	USED ON		
				MODEL	ASS'Y. NO.	DATE
Aluminum 2024-T4	S101 Caustic Dip, S107 Lacquer	A				PM-477
Brass Free Turn.	Natural	B				
Brass Free Turn.	S105 Cadmium Plate	BC				
Bakelite	Black XXXP	BB				
Phenolic	Natural XXXP	P				
Stainless Steel #303	S104 Passivate	SS				



NOMENCLATURE TO BE AS FOLLOWS:

PM-477 - L - B

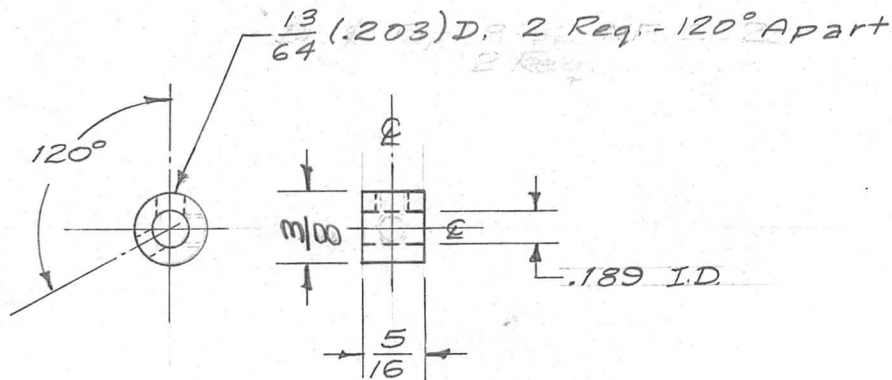
TMC DWG. NO.      LENGTH ("L")  
IN INCHES      MATERIAL  
(See Examples)      (See Chart)

EXAMPLES-

PM-477-2.0-B = Shaft, 2" Long, Brass  
PM-477-2.31-BB = Shaft, 2-5/16" Long, Bakelite

REQ.	ITEM	PART NO.	DESCRIPTION				SYMBOL
		3/16 (.187) D.	THE TECHNICAL MATERIEL CORP.				
		STOCK SIZE	MAMARONECK, NEW YORK				
		SEE CHART	SHAFT, .187 D.				
		MATERIAL					
ISSUE	ITEM	CHANGED FROM	DATE	CH. NO.	DRAFTS	CHECKER	ENG. APP.
TOLERANCES			SCALE:				
DEC. DIM. ±			MAXIMUM ALLOWABLE TOLERANCES HAVE BEEN DETERMINED AND ANY DEVIATIONS WILL BE CAUSE FOR REJECTION.				
FRAC. DIM. ±			REMOVE ALL BURRS AND SHARP EDGES				
ANGULAR DIM. ±			TYPE & TEMPER		HEAT TREAT. SPEC.	DRAWN	CHECKED
			SEE CHART				
			FINISH & SPEC. NO.		ELEC. DES. APP.	MECH. DES. APP.	PM-477

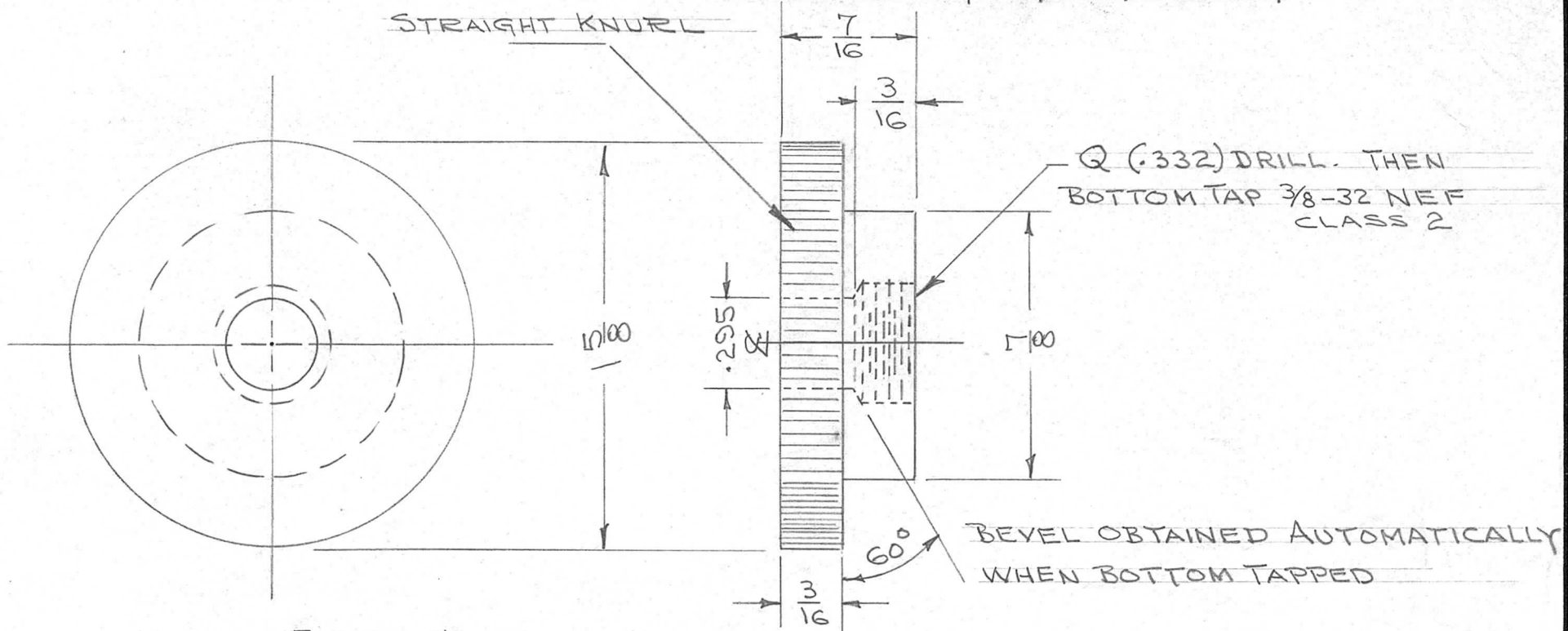
REQ. PER UNIT	USED ON			PM-478	A
	MODEL	ASS'Y. NO.	DATE		
1	ATS-50TU		1-28-58		
1	ATS-70TU		1-28-58		
1	ATS-50(70)TU-2		6-8-59		



ISSUE	ITEM	CHANGED FROM	DATE	CH. NO.	DRAFTS	CHECKER	ENG. APP.	REQ. ITEM	PART NO.	DESCRIPTION	SYMBOL	
									3/8 OD.	THE TECHNICAL MATERIEL CORP. MAMARONECK, NEW YORK		
									STOCK SIZE			
A	1	120° WAS 90° 13/64 HOLES WERE 8-32 TAP	3/8/58	1	16	AND	AST		BRASS	BUSHING, COUPLING		
TOLERANCES								MATERIAL				
DEC. DIM. ±			SCALE: FULL					FREE TURNING		16/28/58	AND	AST
FRAC. DIM. ± 1/64			MAXIMUM ALLOWABLE TOLERANCES HAVE BEEN DETERMINED AND ANY DEVIATIONS WILL BE CAUSE FOR REJECTION. REMOVE ALL BURRS AND SHARP EDGES					TYPE & TEMPER	HEAT TREAT. SPEC.	DRAWN	CHECKED	FINAL APPROVAL
ANGULAR DIM. ±								NATURAL		26R	SP4	PM-478
								FINISH & SPEC. NO.	ELEC. DES. APP.	MECH. DES. APP.		

REQ. PER UNIT	USED ON		
	MODEL	ASS'Y. NO.	DATE
1	RTF		
1	PMO-1		
1	PMO-2		
1	VOX-1		
1	VOX-2		
1	RTF-2	F/P	

PM-479 A

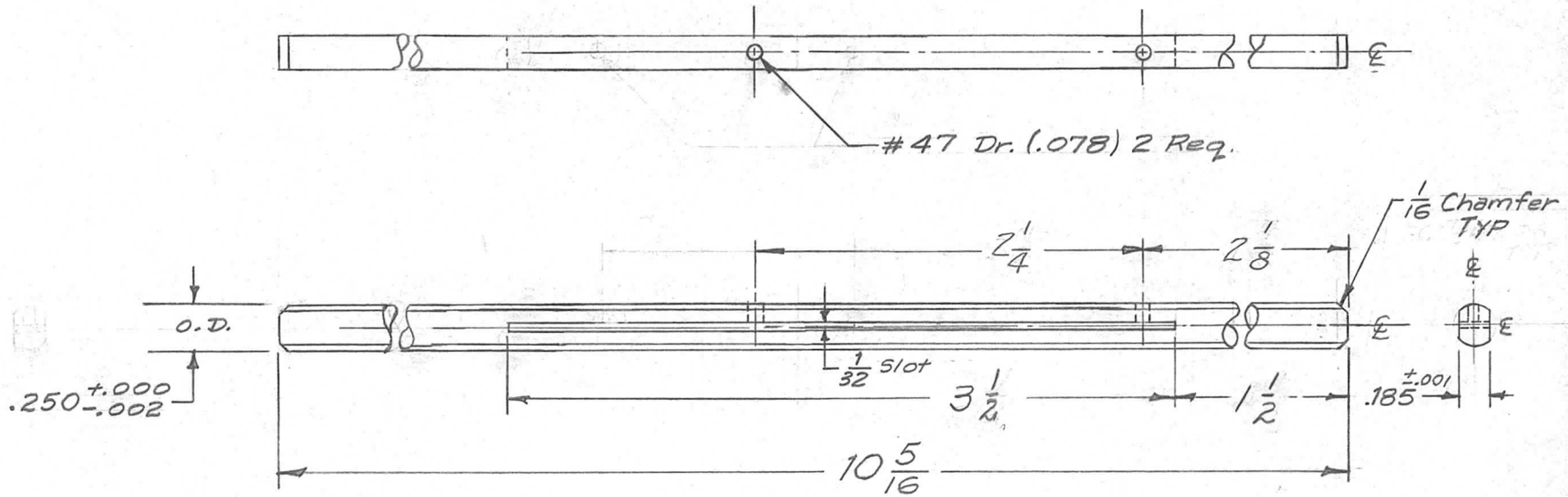


FINISH NOTE:  
 TURNED IN EBANOL "C"  
 REMOVE ALL BURRS AND SHARP EDGES

REQ.	ITEM	PART NO.	DESCRIPTION				SYMBOL
			THE TECHNICAL MATERIEL CORP. MAMARONECK. NEW YORK				
			STOCK SIZE				
			BRASS				
			MATERIAL				
A	1		BUSHING, CALIBRATE DIAL LOCK				
ISSUE	ITEM	CHANGED FROM	DATE	CH. NO.	DRAFTS	CHECKER	ENG. APP.
		FINISH WAS S-197	4-11-63	8773			
TOLERANCES			SCALE:				
DEC. DIM. ±			MAXIMUM ALLOWABLE TOLERANCES HAVE BEEN DETERMINED AND ANY DEVIATIONS WILL BE CAUSE FOR REJECTION.				
FRAC. DIM. ± 1/64			REMOVE ALL BURRS AND SHARP EDGES				
ANGULAR DIM. ± 1/16							
HALF HARD		HEAT TREAT. SPEC.		DRAWN		CHECKED	
SEE NOTE				3/5/58		AHP	
FINISH & SPEC. NO.			ELEC. DES. APP.		MECH. DES. APP.		
							PM-479 A



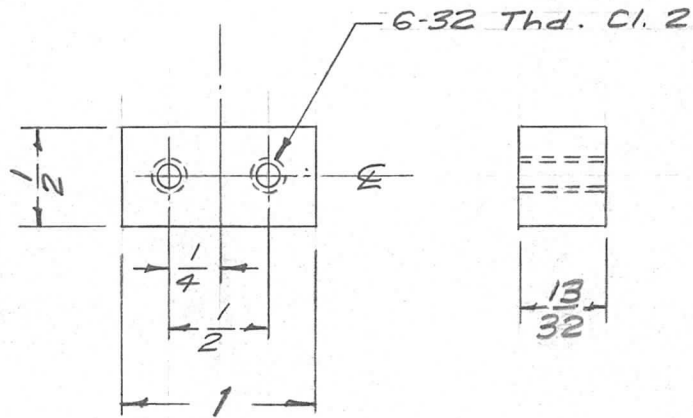
REQ. PER UNIT	USED ON			PM-480	D
	MODEL	ASS'Y. NO.	DATE		
1	GPR-90 II		1-21-58		
1	GPR-90 RX		2-10-58		
1	GPR-90RXD		5-8-63		



ISSUE	ITEM	CHANGED FROM	DATE	CH. NO.	DRAFTS	CHECKER	ENG. APP.	REQ. ITEM	PART NO.	DESCRIPTION	SYMBOL		
D	1	S404 FINISH ADDED	2.4.65	-	bb	JCB				THE TECHNICAL MATERIEL CORP. MAMARONECK, NEW YORK	SHAFT, SWITCH GPR-90		
C	2	GPR-90RXD REF ADDED	5-20-63	9057	E	JCB							
	1	CHAMFER WAS ON ONE END											
B	1	2 1/8 WAS 1 7/8 & 3 1/2	10/21/58		J.C.B.	JCB							
	2	2 1/4 " 3 1/8 & 3 1/8											
A	3 & 4	3 7/8 WAS 2 3/4 & 1 1/2 WAS 2 1/8	7/27/58	1	etc	JCB							
	1 & 2	3 1/8 WAS 1 1/16, 1 1/2 WAS 2 5/16											
TOLERANCES			SCALE: FULL							16 1/21/58	JCB	JCB	
DEC. DIM. ±			MAXIMUM ALLOWABLE TOLERANCES HAVE BEEN DETERMINED AND ANY DEVIATIONS WILL BE CAUSE FOR REJECTION.										
FRAC. DIM. ± 1/64			REMOVE ALL BURRS AND SHARP EDGES										
ANGULAR DIM. ±													
								TYPE & TEMPER	HEAT TREAT. SPEC.	DRAWN	CHECKED	FINAL APPROVAL	
								S404 YELL. IRIDITE		P.L.K.	JCB	PM-480	D
								FINISH & SPEC. NO.		ELEC. DES. APP.	MECH. DES. APP.		

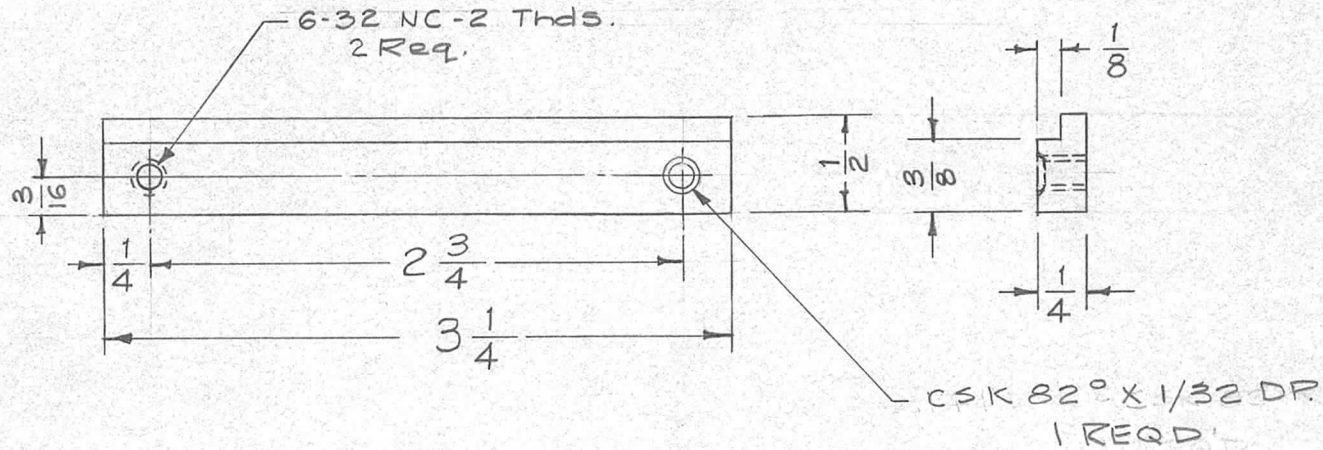
REQ. PER UNIT	USED ON		
	MODEL	ASS'Y. NO.	DATE
2	MR-112		2-20-58
2	MR-113		5-21-58
2	SWR-3000 PM		6-10-58

PM-481 B



ISSUE	ITEM	CHANGED FROM	DATE	CH. NO.	DRAFTS	CHECKER	ENG. APP.	REQ. ITEM	PART NO.	DESCRIPTION	SYMBOL	
								1/2 x 13/32		THE TECHNICAL MATERIEL CORP. MAMARONECK, NEW YORK		
B	1	FINISH WAS S101 & S107	14.65	13210	kb	<i>[Signature]</i>	<i>[Signature]</i>	STOCK SIZE		SPACER, METER MTG. PLATE		
A	1	13/32 WAS 7/16	2/29/58	1	16	<i>[Signature]</i>	<i>[Signature]</i>	ALUMINUM				
TOLERANCES								MATERIAL				
DEC. DIM. ±			SCALE: FULL					2024-T3	1/6 2/20/58	<i>[Signature]</i>	<i>[Signature]</i>	
FRAC. DIM. ± 1/64			MAXIMUM ALLOWABLE TOLERANCES HAVE BEEN DETERMINED AND ANY DEVIATIONS WILL BE CAUSE FOR REJECTION. REMOVE ALL BURRS AND SHARP EDGES					TYPE & TEMPER	HEAT TREAT. SPEC.	DRAWN	CHECKED	FINAL APPROVAL
ANGULAR DIM. ±								S404 YELL. IRIDITE		<i>[Signature]</i>	<i>[Signature]</i>	
								FINISH & SPEC. NO.	ELEC. DES. APP.	MECH. DES. APP.	PM-481 B	

REQ. PER UNIT	USED ON			PM-482	A
	MODEL	ASS'Y. NO.	DATE		
1	SBE-1&2		3-17-58		



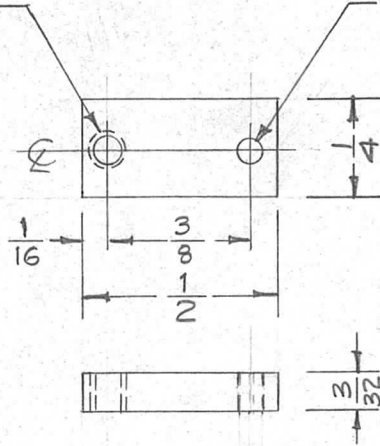
ISSUE	ITEM	CHANGED FROM	DATE	CH. NO.	DRAFTS	CHECKER	ENG. APP.	REQ. ITEM	PART NO.	DESCRIPTION	SYMBOL	
									1/4 x 1/2 BAR	THE TECHNICAL MATERIEL CORP. MAMARONECK. NEW YORK		
									STOCK SIZE			
A	1	UPDATED DWG PER EMN. 10178	10/14/63	10178					ALUMINUM	BRACKET, RETAINING		
									MATERIAL	PLATE		
TOLERANCES			SCALE: FULL					2024-T3	16 3/17/58			
DEC. DIM. ± FRAC. DIM. ± 1/64 ANGULAR DIM. ±			MAXIMUM ALLOWABLE TOLERANCES HAVE BEEN DETERMINED AND ANY DEVIATIONS WILL BE CAUSE FOR REJECTION. REMOVE ALL BURRS AND SHARP EDGES					TYPE & TEMPER	HEAT TREAT. SPEC.	DRAWN	CHECKED	FINAL APPROVAL
								3404 YEL. IRIDITE				
								FINISH & SPEC. NO.	ELEC. DES. APP.	MECH. DES. APP.	PM-482	A

REQ. PER UNIT	USED ON		
	MODEL	ASS'Y. NO.	DATE
2	MR-112	A-1518	3-20-58
2	MR-113	A-1518	5-21-58
2	SWR-3000 PM		6-10-58

PM-483

Dr. & Tap 4-40 NC-2  
1 Req.

# 52 Dr. (.0635)  
1 Req.

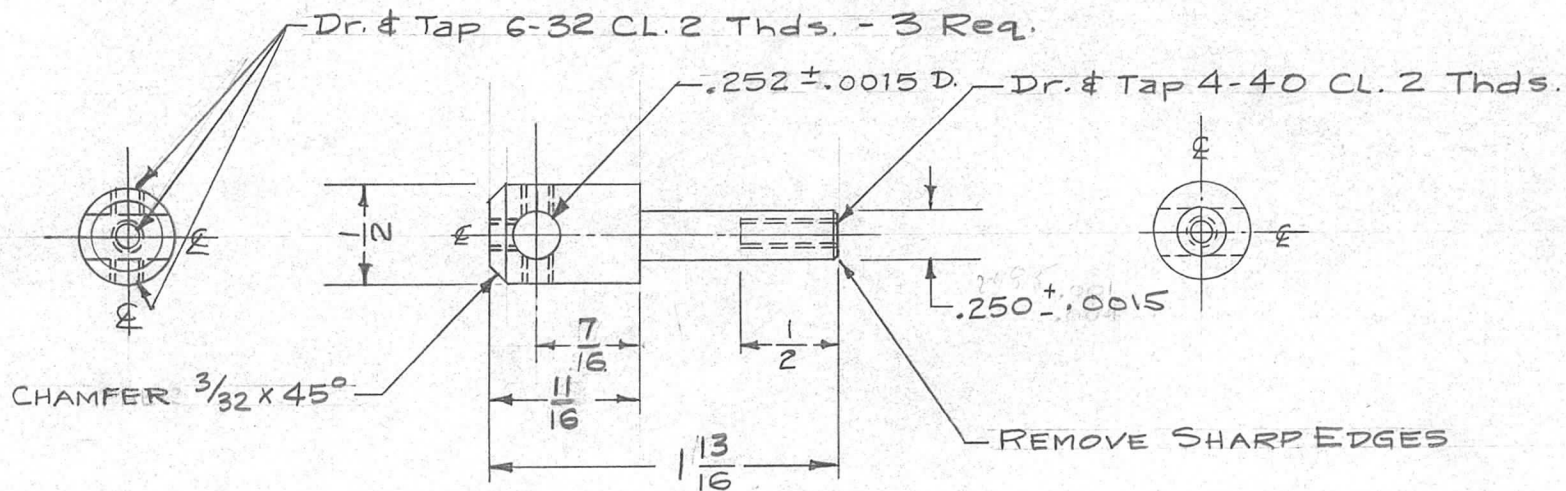


ISSUE	ITEM	CHANGED FROM	DATE	CH. NO.	DRAFTS	CHECKER	ENG. APP.	REQ. ITEM	PART NO.	DESCRIPTION	SYMBOL	
								3/32 thk. x 1/4 Bar		THE TECHNICAL MATERIEL CORP.		
								STOCK SIZE		MAMARONECK, NEW YORK		
								Brass		ARM, ZERO ADJUST		
								MATERIAL				
								Half Hard		16 <sup>3/20</sup> /58		
								Natural				
								FINISH & SPEC. NO.		ELEC. DES. APP.	MECH. DES. APP.	
TOLERANCES			SCALE: 2X					MAXIMUM ALLOWABLE TOLERANCES HAVE BEEN DETERMINED AND ANY DEVIATIONS WILL BE CAUSE FOR REJECTION.			REMOVE ALL BURRS AND SHARP EDGES	
DEC. DIM. ±												
FRAC. DIM. ± 1/64												
ANGULAR DIM. ±												
										PM-483		



REQ. PER UNIT	USED ON		
	MODEL	ASS'Y. NO.	DATE
1	ATS-50TU		12-18-57
1	ATS-70TU		12-18-57
2	ATS-TU-2		6-8-59

PM-484



FINISH

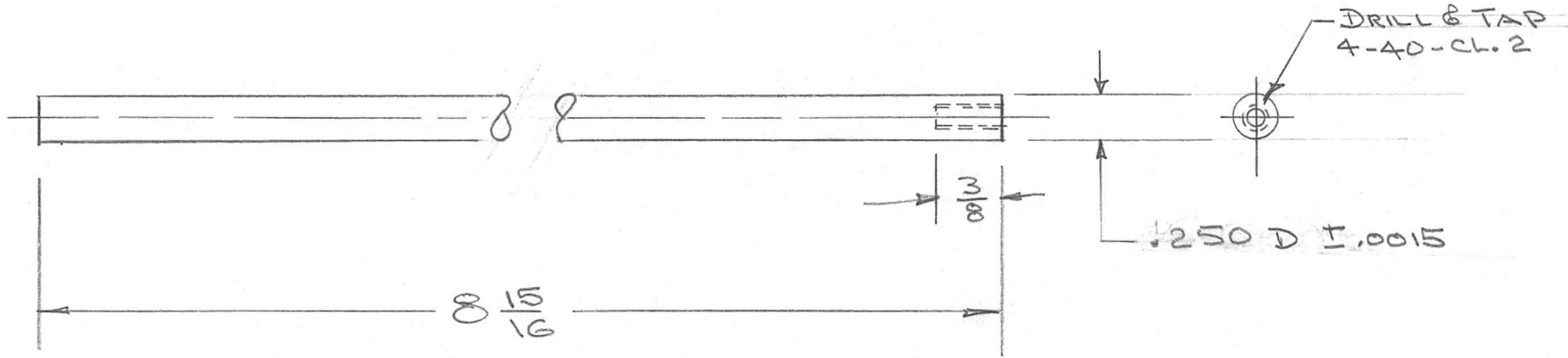
S-245 SILVER PLATE .0005  
S-423 IRIDITE 18-P SILVER KOTE

ISSUE	ITEM	CHANGED FROM	DATE	CH. NO.	DRAFTS	CHECKER	ENG. APP.	REQ. ITEM	PART NO.	DESCRIPTION	SYMBOL	
								1/2 D.		THE TECHNICAL MATERIEL CORP. MAMARONECK, NEW YORK ROD, CONNECTING		
								STOCK SIZE				
								BRASS				
								MATERIAL				
								N	16 12/18/57	AND	Ann JLR	
TOLERANCES								SCALE: FULL				
DEC. DIM. ± .0015								MAXIMUM ALLOWABLE TOLERANCES HAVE BEEN DETERMINED AND ANY DEVIATIONS WILL BE CAUSE FOR REJECTION.				
FRAC. DIM. ± 1/64								REMOVE ALL BURRS AND SHARP EDGES				
ANGULAR DIM. ±								SEE NOTE				
								FINISH & SPEC. NO.		ELEC. DES. APP.	MECH. DES. APP.	PM-484



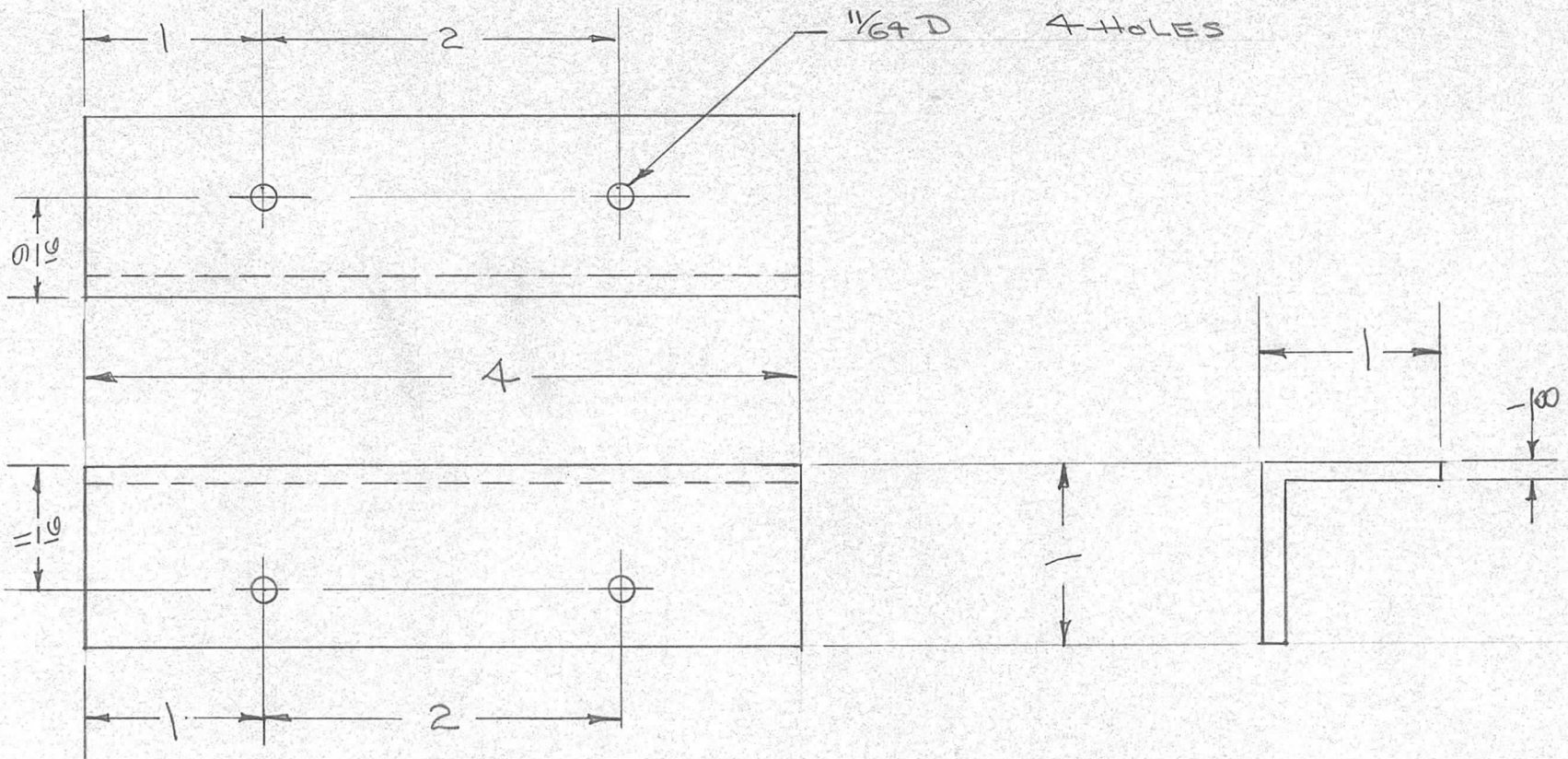
REQ. PER UNIT	USED ON		
	MODEL	ASS'Y. NO.	DATE
1	ATS-70 TU		3/31/58
1	ATS-50 TU		3/31/58

PM-485



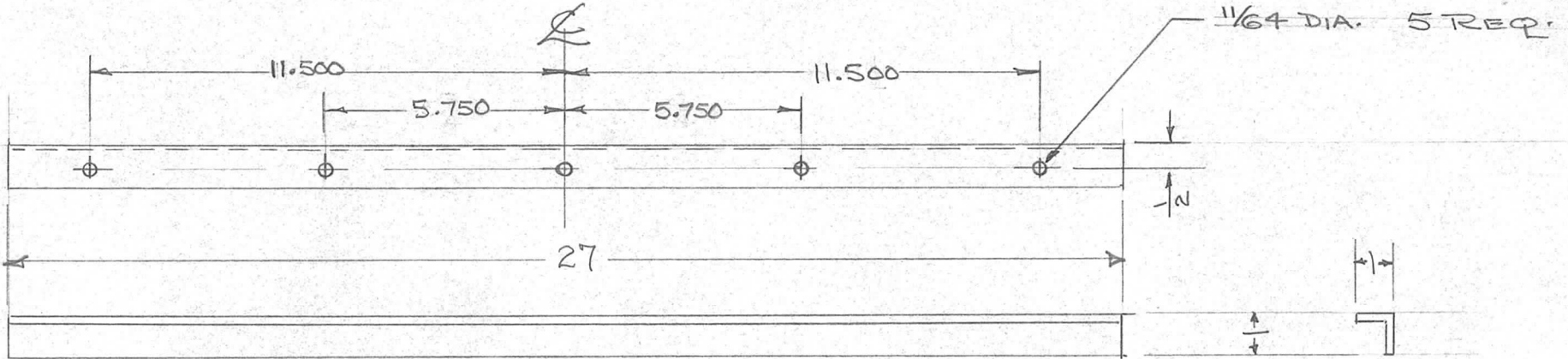
REQ.	ITEM	PART NO.	DESCRIPTION				SYMBOL
		1/4 .250 D	THE TECHNICAL MATERIEL CORP.				
		STOCK SIZE	MAMARONECK, NEW YORK				
		STAINLESS STEEL	SHAFT, CONTACT WHEEL				
		MATERIAL					
ISSUE	ITEM	CHANGED FROM	DATE	CH. NO.	DRAFTS	CHECKER	ENG. APP.
TOLERANCES			SCALE:				
DEC. DIM. ± .0015			MAXIMUM ALLOWABLE TOLERANCES HAVE BEEN DETERMINED AND ANY DEVIATIONS WILL BE CAUSE FOR REJECTION.				
FRAC. DIM. ± 1/64			REMOVE ALL BURRS AND SHARP EDGES				
ANGULAR DIM. ±							
TYPE & TEMPER		HEAT TREAT. SPEC.	DRAWN	CHECKED	FINAL APPROVAL		
S104 PASSIVATE			JHQ	W	JZR		
FINISH & SPEC. NO.		ELEC. DES. APP.	MECH. DES. APP.		PM-485		

REQ. PER UNIT	USED ON		DATE	PM-487
	MODEL	ASS'Y. NO.		
1	A-1279		5-13-58	



REQ.	ITEM	PART NO.	DESCRIPTION		SYMBOL		
		1 x 1 x 1/8	THE TECHNICAL MATERIEL CORP.				
		STOCK SIZE	MAMARONECK, NEW YORK				
		ALUMINUM	UNIT, REAR FASTENING				
		MATERIAL					
ISSUE	ITEM	CHANGED FROM	DATE	CH. NO.	DRAFTS	CHECKER	ENG. APP.
TOLERANCES			SCALE: <i>1/16</i>				
DEC. DIM. ±			MAXIMUM ALLOWABLE TOLERANCES HAVE BEEN DETERMINED AND ANY DEVIATIONS WILL BE CAUSE FOR REJECTION. REMOVE ALL BURRS AND SHARP EDGES				
FRAC. DIM. ± 1/64							
ANGULAR DIM. ±							
6063-T5		TYPE & TEMPER	HEAT TREAT. SPEC.	DRAWN	CHECKED	FINAL APPROVAL	
		S101 CAUSTIC DIP		<i>file</i>	<i>dm</i>	PM-487	
		S107 LACQUER DIP					
FINISH & SPEC. NO.			ELEC. DES. APP.	MECH. DES. APP.			

REQ. PER UNIT	USED ON			PM-488 A
	MODEL	ASS'Y. NO.	DATE	
1	A-1279		5-13-58	

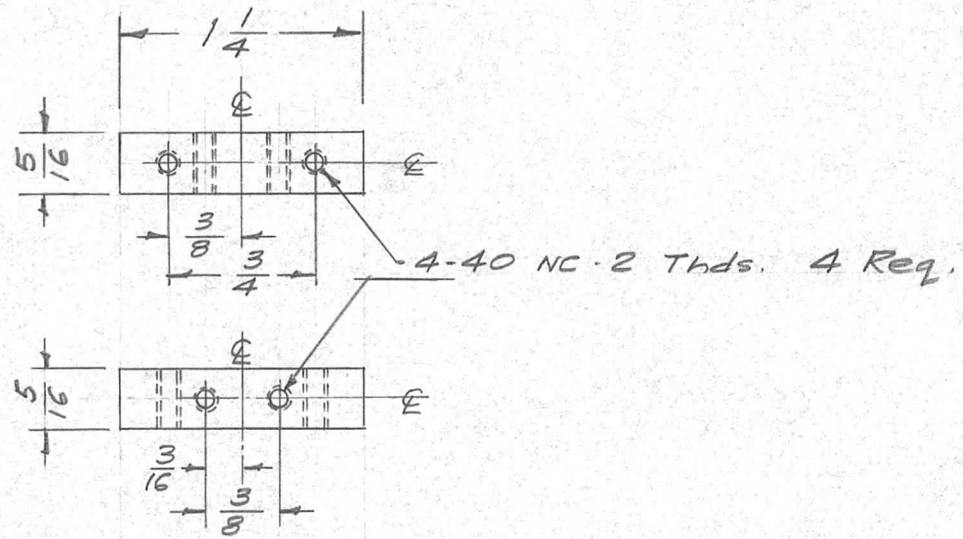


ISSUE	ITEM	CHANGED FROM	DATE	CH. NO.	DRAFTS	CHECKER	ENG. APP.	REQ. ITEM	PART NO.	DESCRIPTION	SYMBOL	
								1 x 1 x 1/8	STOCK SIZE	THE TECHNICAL MATERIEL CORP. MAMARONECK. NEW YORK		
A	1	DECIMAL DIMENSIONS ADDED	6/26/58	402	<i>file</i>		<i>ahb</i>	STRUCTURAL ALUMINUM	MATERIAL	STIFFENER, FRONT PANEL		
TOLERANCES		SCALE: //						6061-T6		<i>file</i>	<i>ahb</i>	
DEC. DIM. ± .005		MAXIMUM ALLOWABLE TOLERANCES HAVE BEEN DETERMINED AND ANY DEVIATIONS WILL BE CAUSE FOR REJECTION. REMOVE ALL BURRS AND SHARP EDGES						TYPE & TEMPER	HEAT TREAT. SPEC.	DRAWN	CHECKED	FINAL APPROVAL
FRAC. DIM. ± 1/64								S101 CAUSTIC DIP		S107 LACQUER DIP		FINISH & SPEC. NO.
ANGULAR DIM. ±								ELEC. DES. APP.		MECH. DES. APP.		



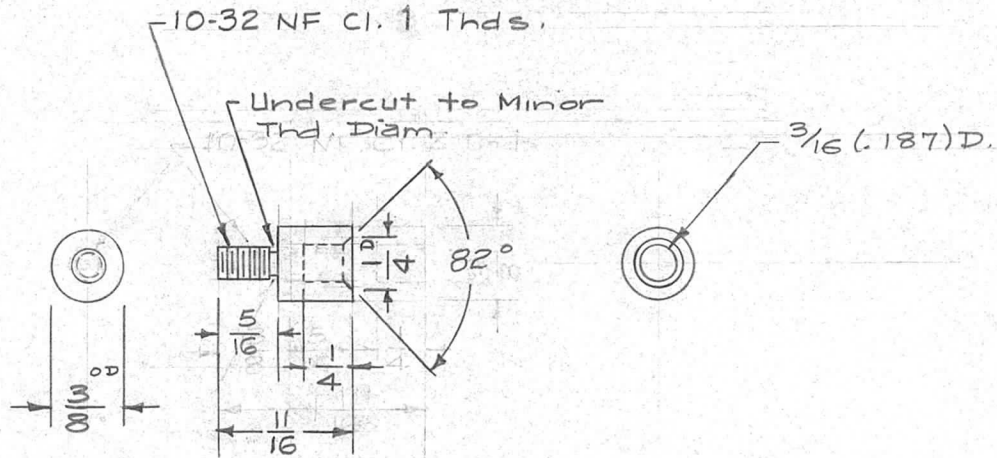
REQ. PER UNIT	USED ON			PM-489
	MODEL	ASS'Y. NO.	DATE	
1	RFA-1		5-12-58	

DM



REQ.	ITEM	PART NO.	DESCRIPTION		SYMBOL		
		5/16 SQUARE	THE TECHNICAL MATERIEL CORP.				
		STOCK SIZE	MAMARONECK. NEW YORK				
		ALUMINUM	BAR NUT, CONNECTOR MTG.				
		MATERIAL					
ISSUE	ITEM	CHANGED FROM	DATE	CH. NO.	DRAFTS	CHECKER	ENG. APP.
TOLERANCES			SCALE: FULL				
DEC. DIM. $\pm$			MAXIMUM ALLOWABLE TOLERANCES HAVE BEEN DETERMINED AND ANY DEVIATIONS WILL BE CAUSE FOR REJECTION. REMOVE ALL BURRS AND SHARP EDGES				
FRAC. DIM. $\pm 1/64$							
ANGULAR DIM. $\pm$							
2024-T3		— H —	16 5/12/58	JHDe	DM	FINAL APPROVAL	
TYPE & TEMPER		HEAT TREAT. SPEC.	DRAWN	CHECKED	PM-489		
5101 Caustic Dip				RFB			
5107 Lacquer							
FINISH & SPEC. NO.			ELEC. DES. APP.	MECH. DES. APP.			

REQ. PER UNIT	USED ON			PM-491	A
	MODEL	ASS'Y. NO.	DATE		
2	RFA-1	TF-188	5-24-58		



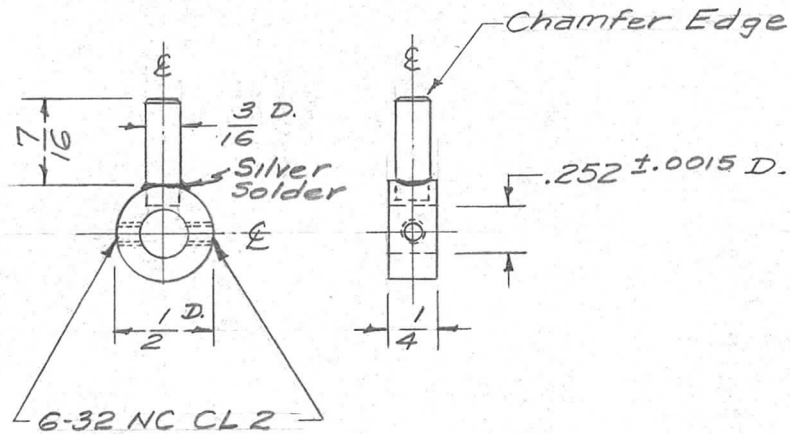
REQ.	ITEM	PART NO.	DESCRIPTION				SYMBOL
		3/8 OD	THE TECHNICAL MATERIEL CORP.				
		STOCK SIZE	MAMARONECK. NEW YORK				
		BRASS	BUSHING, TRANSFORMER				
		MATERIAL					
A	1	COMPLETE WAS 1-1/16 REVISION (LONG - 3/8 IN. THDS. - NO C/SINK)	4/6/58	1	16	<i>dm</i>	
ISSUE ITEM		CHANGED FROM	DATE	CH. NO.	DRAFTS	CHECKER	ENG. APP.
TOLERANCES			SCALE: FULL				
DEC. DIM. ±			MAXIMUM ALLOWABLE TOLERANCES HAVE BEEN DETERMINED AND ANY DEVIATIONS WILL BE CAUSE FOR REJECTION. REMOVE ALL BURRS AND SHARP EDGES				
FRAC. DIM. ± 1/64							
ANGULAR DIM. ±							
		TYPE & TEMPER	HEAT TREAT. SPEC.	DRAWN	CHECKED	FINAL APPROVAL	
		NONE		<i>WJ</i>	<i>RFB</i>	PM-491	A
		FINISH & SPEC. NO.	ELEC. DES. APP.	MECH. DES. APP.			





REQ. PER UNIT	USED ON		
	MODEL	ASS'Y. NO.	DATE
2	RFA-1		6-17-58

PM-493

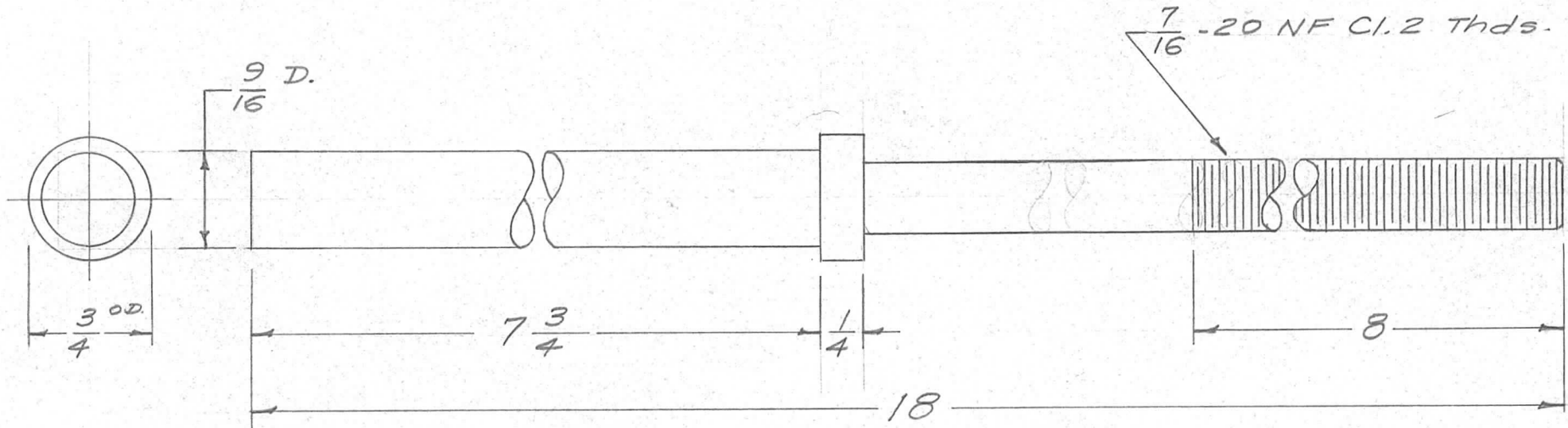


REQ.	ITEM	PART NO.	DESCRIPTION			SYMBOL
			THE TECHNICAL MATERIEL CORP. MAMARONECK, NEW YORK			
			STOP, CAPACITOR			
			MATERIAL			
			BRASS			
			FREE TURNING			
			16 6/17/58			
			TYPE & TEMPER	HEAT TREAT. SPEC.	DRAWN	CHECKED
			5105 Cadmium Plate			
			FINISH & SPEC. NO.		ELEC. DES. APP.	MECH. DES. APP.

ISSUE	ITEM	CHANGED FROM	DATE	CH. NO.	DRAFTS	CHECKER	ENG. APP.
TOLERANCES			SCALE: FULL				
DEC. DIM. ±			MAXIMUM ALLOWABLE TOLERANCES HAVE BEEN DETERMINED AND ANY DEVIATIONS WILL BE CAUSE FOR REJECTION.				
FRAC. DIM. ± 1/64			REMOVE ALL BURRS AND SHARP EDGES				
ANGULAR DIM. ±							

PM-493

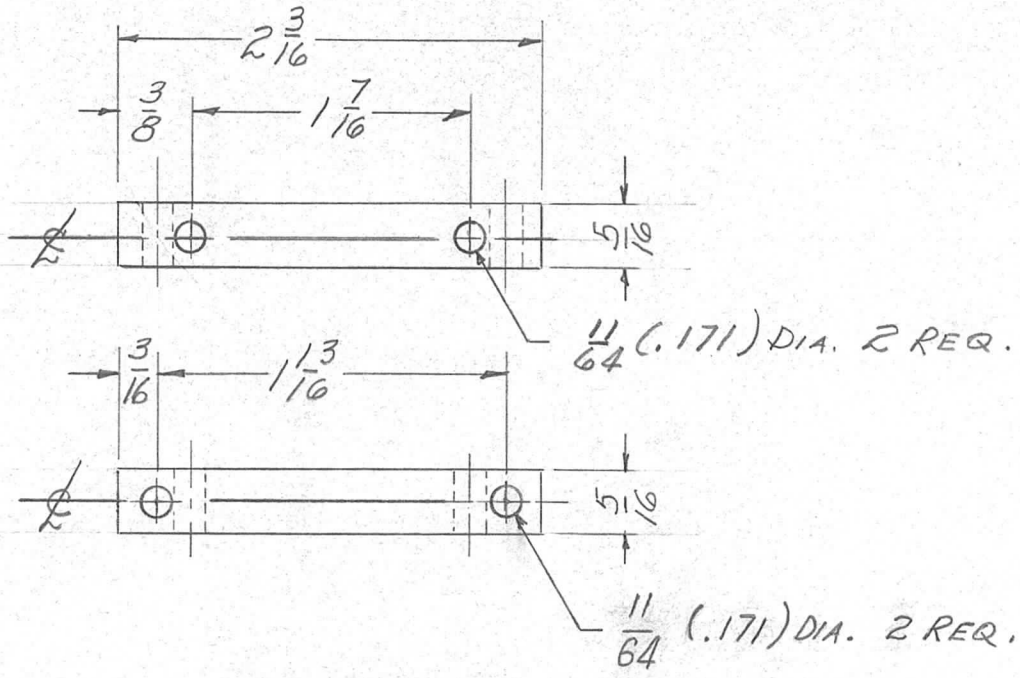
REQ. PER UNIT	USED ON			PM-494	B
	MODEL	ASS'Y. NO.	DATE		
1	VRA-1,2,2A	A-811	6-26-58		



NOTE: S-425 COPPER IRIDITE  
COPPER FLASH .0002

ISSUE	ITEM	CHANGED FROM	DATE	CH. NO.	DRAFTS	CHECKER	ENG. APP.	REQ. ITEM	PART NO.	DESCRIPTION	SYMBOL	
B	1	ADDED FINISH NOTE	10-13/59	1407	Ph. JH	JH	ah	3/4 O.D. Rod	STOCK SIZE	THE TECHNICAL MATERIEL CORP. MAMARONECK, NEW YORK		
A	1	FINISH WAS CADMIUM PLATED	3/18/59	—	JH	JH	ah	Stainless Steel		SUPPORT, MAST		
TOLERANCES			SCALE: FULL	SUPERCEDES A-797, PM-302, 303, & 429				303		16 4/26/58	JH	ah
DEC. DIM. ±			MAXIMUM ALLOWABLE TOLERANCES HAVE BEEN DETERMINED AND ANY DEVIATIONS WILL BE CAUSE FOR REJECTION.			TYPE & TEMPER		HEAT TREAT. SPEC.	DRAWN	CHECKED	FINAL APPROVAL	
FRAC. DIM. ± 1/64			REMOVE ALL BURRS AND SHARP EDGES			SEE NOTE					PM-494	
ANGULAR DIM. ±						FINISH & SPEC. NO.		ELEC. DES. APP.	MECH. DES. APP.		B	

REQ. PER UNIT	USED ON			PM-496 B
	MODEL	ASS'Y. NO.	DATE	
	GPR		7/25/58	

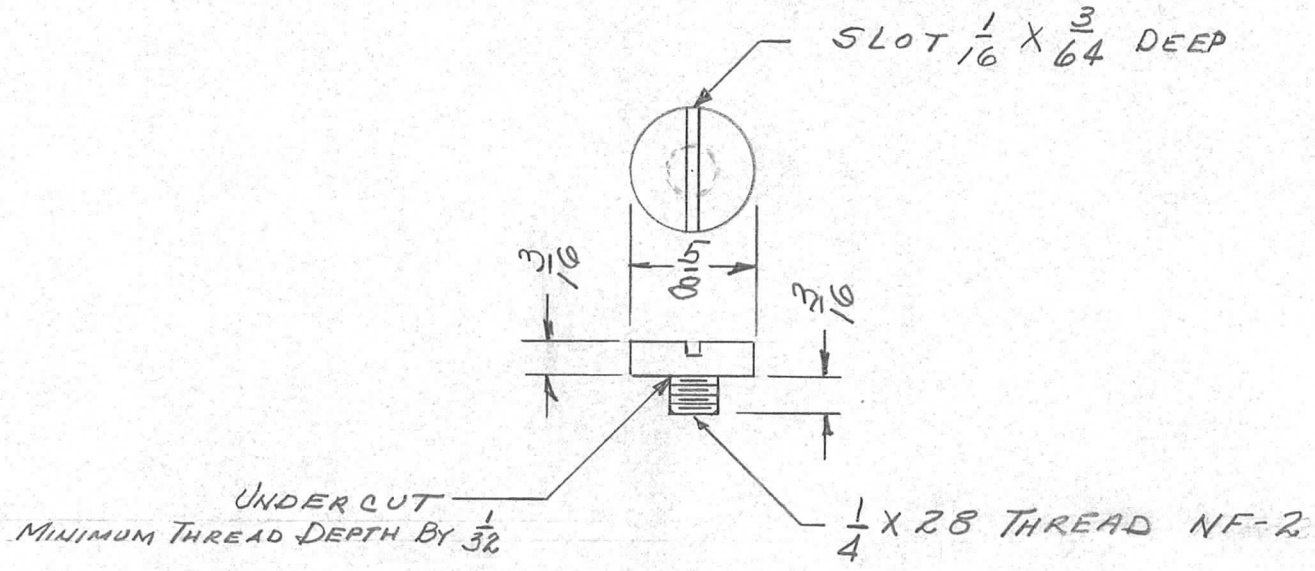


REQ.	ITEM	PART NO.	DESCRIPTION					SYMBOL
		5/16 SQ.	THE TECHNICAL MATERIEL CORP. MAMARONECK. NEW YORK					
B	1	FINISH WAS S101 & S107	8-14-63	9761	AK	JAY	16	
A	1	#27 (.144) D CHANGED TO 11/64 (.171) D	10-14-58	477	J.C.B.	AK	AK	
ISSUE	ITEM	CHANGED FROM	DATE	CH. NO.	DRAFTS	CHECKER	ENG. APP.	
TOLERANCES			SCALE: FULL SIZE					
DEC. DIM. ±			MAXIMUM ALLOWABLE TOLERANCES HAVE BEEN DETERMINED AND ANY DEVIATIONS WILL BE CAUSE FOR REJECTION.					
FRAC. DIM. ±			REMOVE ALL BURRS AND SHARP EDGES					
ANGULAR DIM. ±								
2024-74		AK	7/25/58		AK			
S 404 YELLOW IRIDITE		HEAT TREAT. SPEC.		DRAWN		CHECKED		FINAL APPROVAL
FINISH & SPEC. NO.		ELEC. DES. APP.		MECH. DES. APP.		PM-496 B		



REQ. PER UNIT	USED ON		
	MODEL	ASS'Y. NO.	DATE
1	SBE-2	A-1517	8-11-58
1	SBE-3	AP-100	11-30-59

PM-498



ISSUE	ITEM	CHANGED FROM	DATE	CH. NO.	DRAFTS	CHECKER	ENG. APP.	REQ. ITEM	PART NO.	DESCRIPTION	SYMBOL	
										THE TECHNICAL MATERIEL CORP. MAMARONECK, NEW YORK		
									STOCK SIZE	STOP SCREW, GEAR		
									MATERIAL	SBE-1		
								HALF-HARD				
								TYPE & TEMPER	HEAT TREAT. SPEC.	DRAWN	CHECKED	FINAL APPROVAL
								CAD. PLATE .0002				PM-498
								FINISH & SPEC. NO.		ELEC. DES. APP.	MECH. DES. APP.	

TOLERANCES  
 DEC. DIM. ±  
 FRAC. DIM. ±  
 ANGULAR DIM. ±

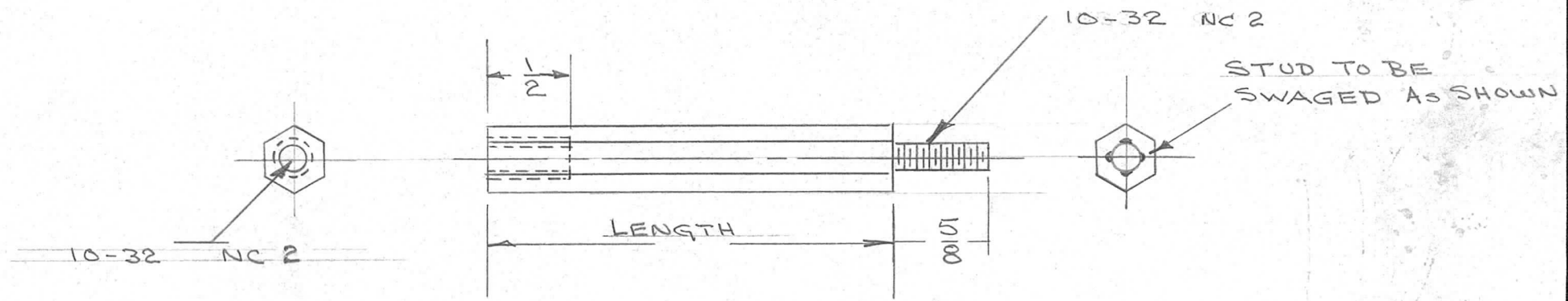
SCALE: C/O  
 MAXIMUM ALLOWABLE TOLERANCES HAVE BEEN DETERMINED AND ANY DEVIATIONS WILL BE CAUSE FOR REJECTION.  
 REMOVE ALL BURRS AND SHARP EDGES



PART No	LENGTH
PM-499-1	2 15/16
PM-499-2	1 15/16
PM-499-3	2 1/16

REQ. PER UNIT	USED ON		
	MODEL	ASS'Y. NO.	DATE

PM-499



ISSUE	ITEM	CHANGED FROM	DATE	CH. NO.	DRAFTS	CHECKER	ENG. APP.
TOLERANCES			SCALE: <i>A</i>				
DEC. DIM. ±			MAXIMUM ALLOWABLE TOLERANCES HAVE BEEN DETERMINED AND ANY DEVIATIONS WILL BE CAUSE FOR REJECTION. REMOVE ALL BURRS AND SHARP EDGES				
FRAC. DIM. ±							
ANGULAR DIM. ±							

REQ. ITEM	PART NO.	DESCRIPTION	SYMBOL
HEX ROD 3/8	ACROSS FLATS	THE TECHNICAL MATERIEL CORP. MAMARONECK, NEW YORK	
STOCK SIZE			
BRASS		SPACER, THREADED	
MATERIAL			
TYPE & TEMPER	HEAT TREAT. SPEC.	DRAWN	CHECKED
CADMIUM PLATED			
FINISH & SPEC. NO.	ELEC. DES. APP.	MECH. DES. APP.	PM-499