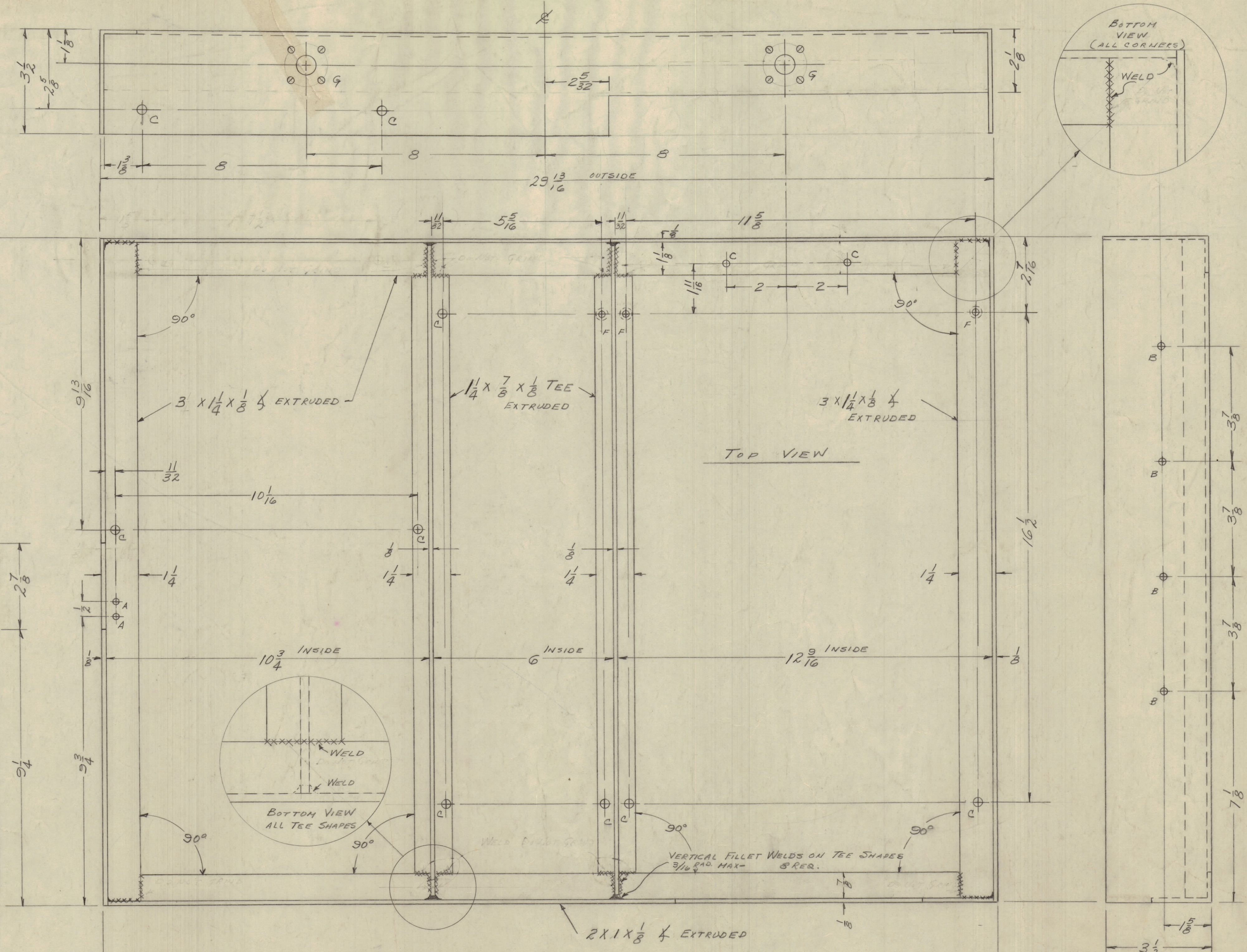


IF IT IS FOUND DESIRABLE TO CHANGE ANY TOLERANCE OR OTHER DETAIL SPECIFIED ON THIS DRAWING NOTIFY THE PURCHASER PROMPTLY.
 MAXIMUM ALLOWABLE TOLERANCES HAVE BEEN DETERMINED AND DEVIATIONS WILL BE CAUSE FOR REJECTION. REMOVE ALL BURRS AND SHARP EDGES

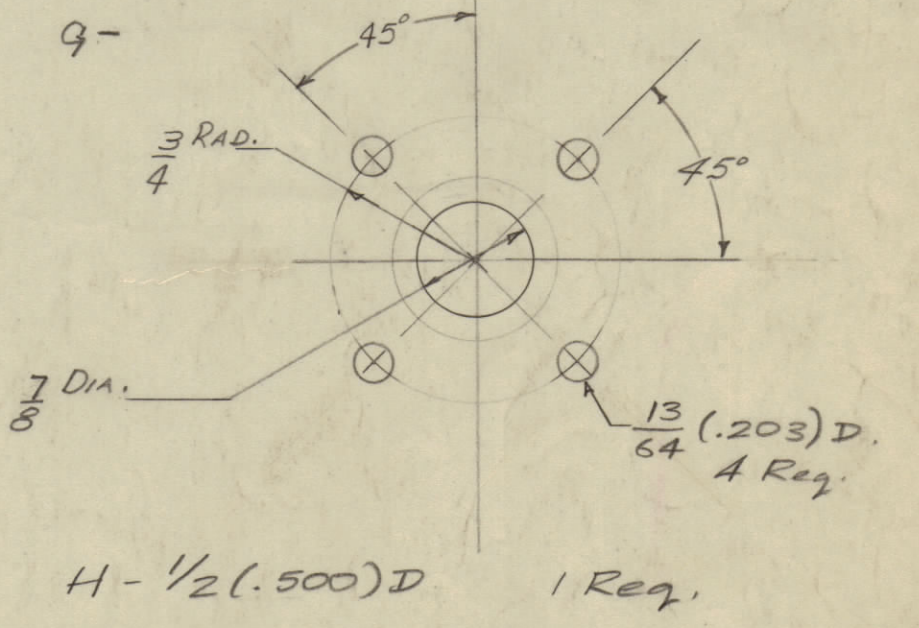
NOTICE TO PERSONS RECEIVING THIS DRAWING

THE TECHNICAL MATERIEL CORPORATION claims proprietary right in the material disclosed hereon. This drawing is issued in confidence for engineering information only and may not be reproduced or used to manufacture anything shown hereon without permission from THE TECHNICAL MATERIEL CORPORATION to the user. This drawing is loaned for mutual assistance and is subject to recall at any time.

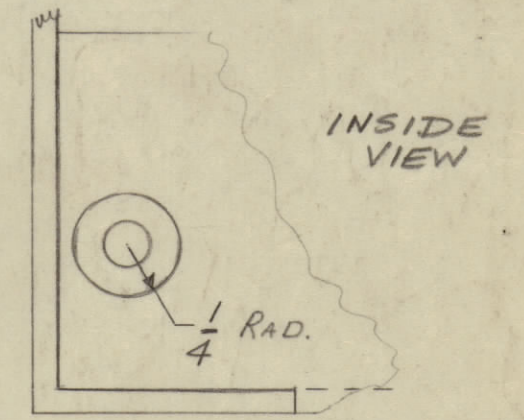
Property of:
 THE TECHNICAL MATERIEL CORPORATION
 MAMARONECK, NEW YORK



- HOLE LEGEND**
- A- No. 16 (.177) DIA. HOLE 7 REQ.
 - B- No. 8 (.199) DIA. HOLE 8 REQ.
 - C- No. 1 (.228) DIA. HOLE 13 REQ.
 - D- 7/16 (.437) DIA. HOLE 2 REQ.
 - E- 1" (1.000) DIA. HOLE 1 REQ.
 - F- DRILL 5/8" DIA. 8-32 F.H.S. 1/16" BELOW OUTSIDE (BOTTOM) SURFACE. 3 REQ.



NOTE: THESE TWO "C" HOLES MUST HAVE CLEAR FLAT SURFACE AROUND THEM TO ACCOMMODATE HEX HEAD BOLTS



BOTTOM FLATNESS MUST BE FLAT TO WITHIN 1/32 OF A TRUE PLANE

- NOTE:
1. HEIGHT OF WELDS MUST NOT EXCEED 3/32" UNLESS OTHERWISE NOTED.
 2. DO NOT WELD ANY OUTSIDE SURFACE EXCEPT BOTTOM.
 3. DO NOT GRIND WELDS

D	1/2 DIM ADDED, SACA WAS	7/24/55	14 301	RKX	909
C	1 FINISH WAS S101/S107	5/24/55	CC	CJL	909
B	1 RELOCATED (2) "C" HOLES (1/2")	5/13/55	4823	DM	909
A	4 WELD NOTES 213 ADDED				
	3 NOTCH ADDED TO REAR	8/1/55	1	16	
	2 ONE "H" HOLE ADDED				
	1 TWO "C" HOLES ADDED				

ISSUE	ITEM	CHANGED FROM	DATE	CN. NO.	DRAFTS	CHECKER	ENGR. APP.
TOLERANCES							
SCALE: 6"=1'0"							
DRILL, PUNCH, COMMERCIAL STOCK SIZES AND MANUFACTURERS TOLERANCES ARE NOT INCLUDED.							

1	RTF-2	F/P			
REQ. PER UNIT	MODEL	PROJECT NO.	ASSY. NO.	DATE	USED ON

REQ. ITEM	PART NO.	DESCRIPTION	SYMBOL
As NOTED		THE TECHNICAL MATERIEL CORP. MAMARONECK, NEW YORK	
ALUMINUM	CP	CHASSIS TRAY	
MATERIAL	WEIGHT PER PC.		
6063-T5	RTF-2		
TYPE & TEMPER	10-28-55		
HEAT TREAT SPEC.			
SACD YELLOW IRIDITE			
FINISH & SPEC. NO.			

PM-513 D