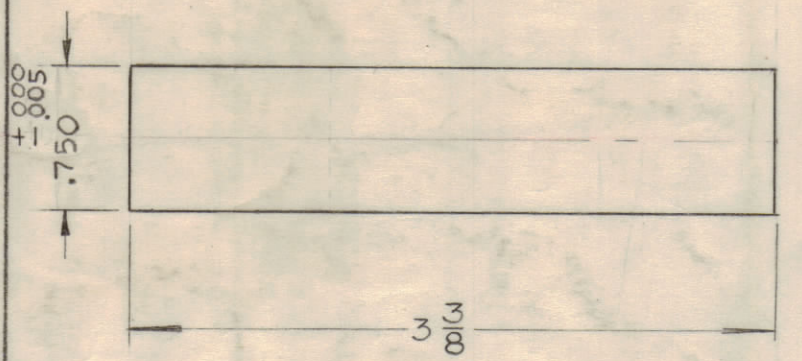
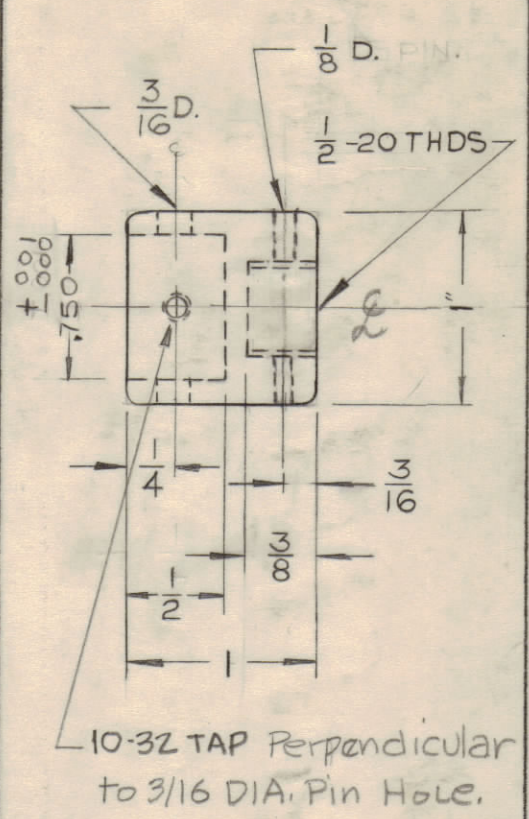


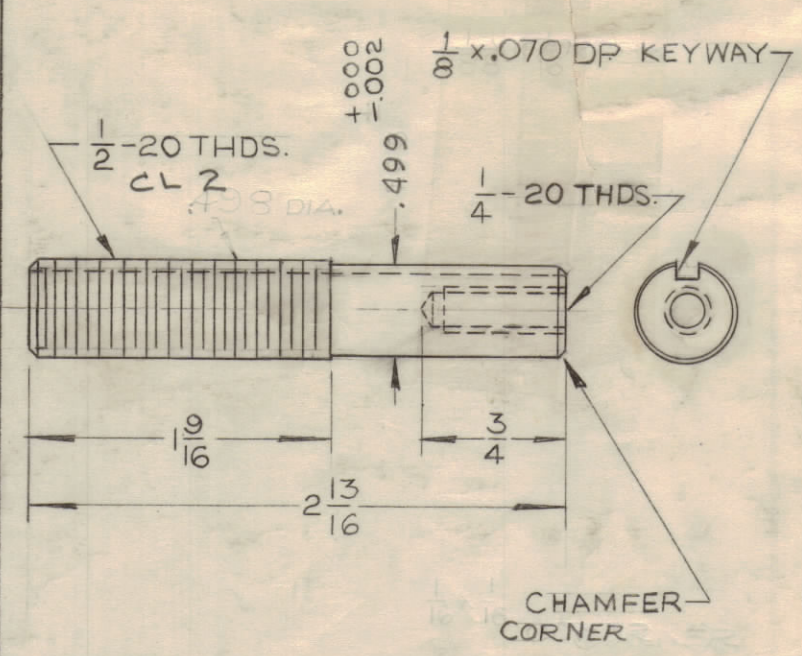
DETENT & SPROCKET SECTION  
MATERIAL: STAINLESS STEEL (303)  
REQ. 1



INSULATED SECTION  
MATERIAL: SILICONE GLASS G7  
REQ. 1

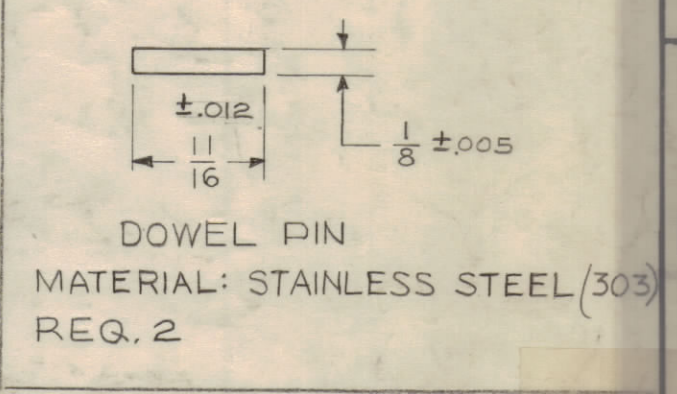
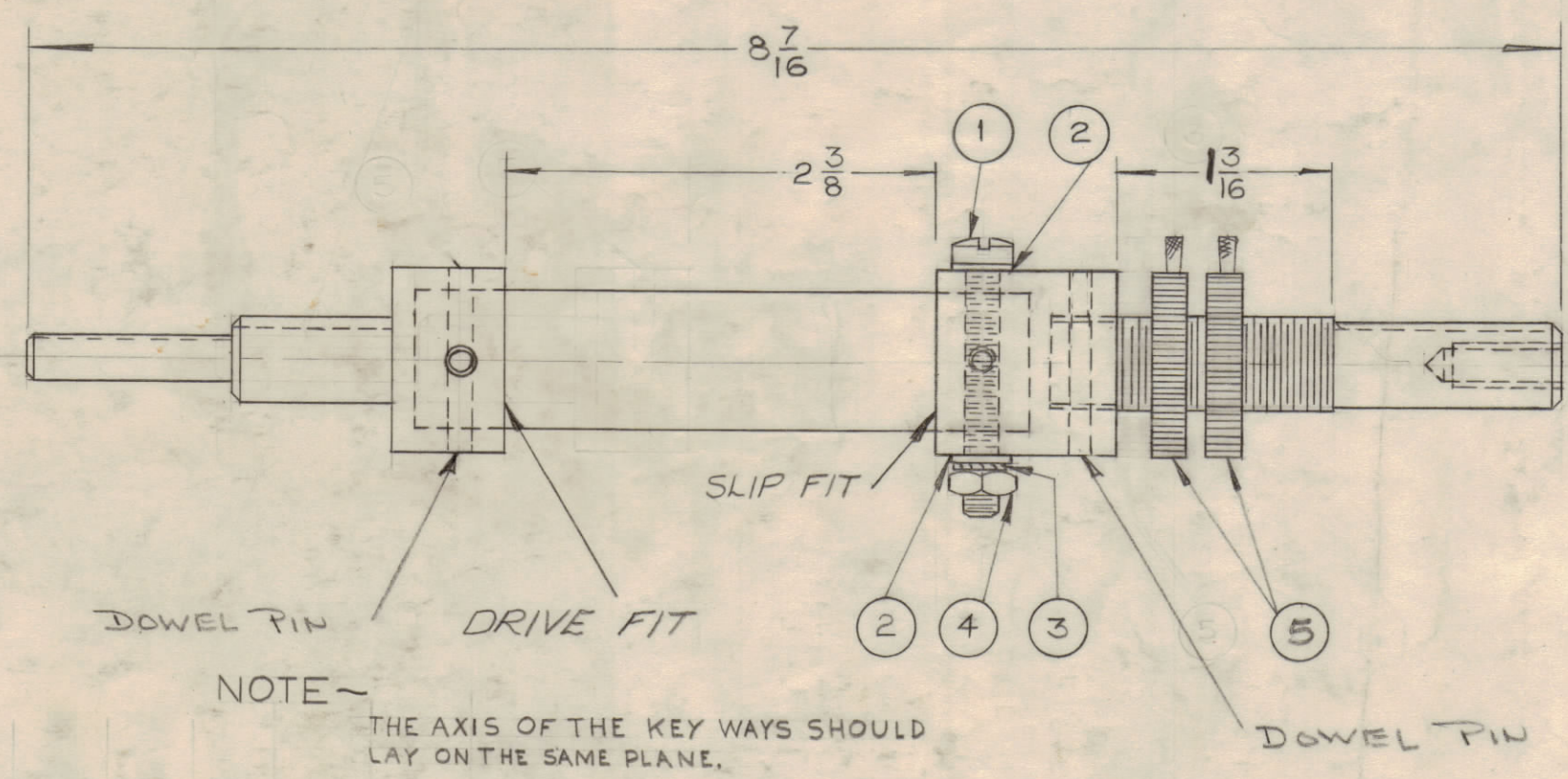


JOINING HUB  
MATERIAL: STAINLESS STEEL (303)  
REQ. 1



ROTOR SHAFT  
MATERIAL: STAINLESS STEEL (303)  
REQ. 1

NOTE:  
REMOVE ALL BURRS



G	GF5	IT. 2 ADD. TO B/M: DETENT & SPROCKET SECT: '10:32 TAP' NOTE ADD.	4.5.65	13805	21.	gcb	03	
F	G2	DIMENSION 499 WAS .500	8-20-62	7089	36	gcb	16	
E	3	ITEM 4 WAS NHT1032BN12						
E	2	ITEM 2 WAS FW10HBN	10-31-61	5781	11.	RU	16	
D	1	ITEM 1 WAS SCBP1032BN21						
C	C5	'KEYWAY' NOTE ADDED	10-9-61	5674	11.	gcb	16	
C	G3	ADDED 10-32 TAPPED HOLE TO Joining Hub	11/28/60	3591	D8M	gcb	16	
C	G7	ADDED KEYWAY .070 DEEP X 1/16" WIDE (Det. & Sprocket)						
B	G5	.750 ID WAS .755 ±.001						
B	G6	.500 DIA WAS .498 ±.001	8/12/60	2809	RG	gcb	16	
B	G6	.250 DIA WAS .248 ±.001						
B	G7	KEYWAY WAS 1/8 X 1/16						
B	G3	.750 ID WAS .755 ±.001						
B	G2	.500 OD WAS .498 ±.001						
B	G2	KEYWAY WAS 1/8 X 1/16						
A	G3	HUB ID. WAS .750 ID	7	22	22	cy	16	
A	G5	SHAFT OD WAS 3/4 OD	60					
A	G5	DETENT ID WAS .750 ID						
A	ISSUE	ZONE	DESCRIPTION	DATE	CH. NO.	DRAFTS	CHECKER	ENG. APP.
TOLERANCES			SCALE:					
DEC. DIM. ±			MAXIMUM ALLOWABLE TOLERANCES HAVE BEEN DETERMINED AND ANY DEVIATIONS WILL BE CAUSE FOR REJECTION.					
FRAC. DIM. ±			REMOVE ALL BURRS AND SHARP EDGES					
ANGULAR DIM. ±								

2	6	SLHC10/32 SP4	SETScrew	
2	5	NT-130	NUT KNUBBED	
1	4	NHT1032 BN 12	HEX. NUT	
1	3	LWE 10 MRN	LOCK WASHER, EXT.	
2	2	FW 10HBN	WASHER, FLAT	
1	1	SCBP 1032 BN 21	MACHINE SCREW	
REQ. ITEM	PART NO.	DESCRIPTION		SYMBOL
THE TECHNICAL MATERIEL CORP. MAMARONECK, NEW YORK				
STOCK SIZE				
MATERIAL				
SHAFT ANTENNA TUNER SWITCH				
TYPE & TEMPER				
DRAWN		ELEC. DES. APP.		MECH. DES. APP.
CHECKED		FINAL APPROVAL		
PM-631 G				

1	GPT-40K	AT-101	3-22-60
REQ PER UNIT	MODEL	SECTION	ASS'Y. NO.
			DATE