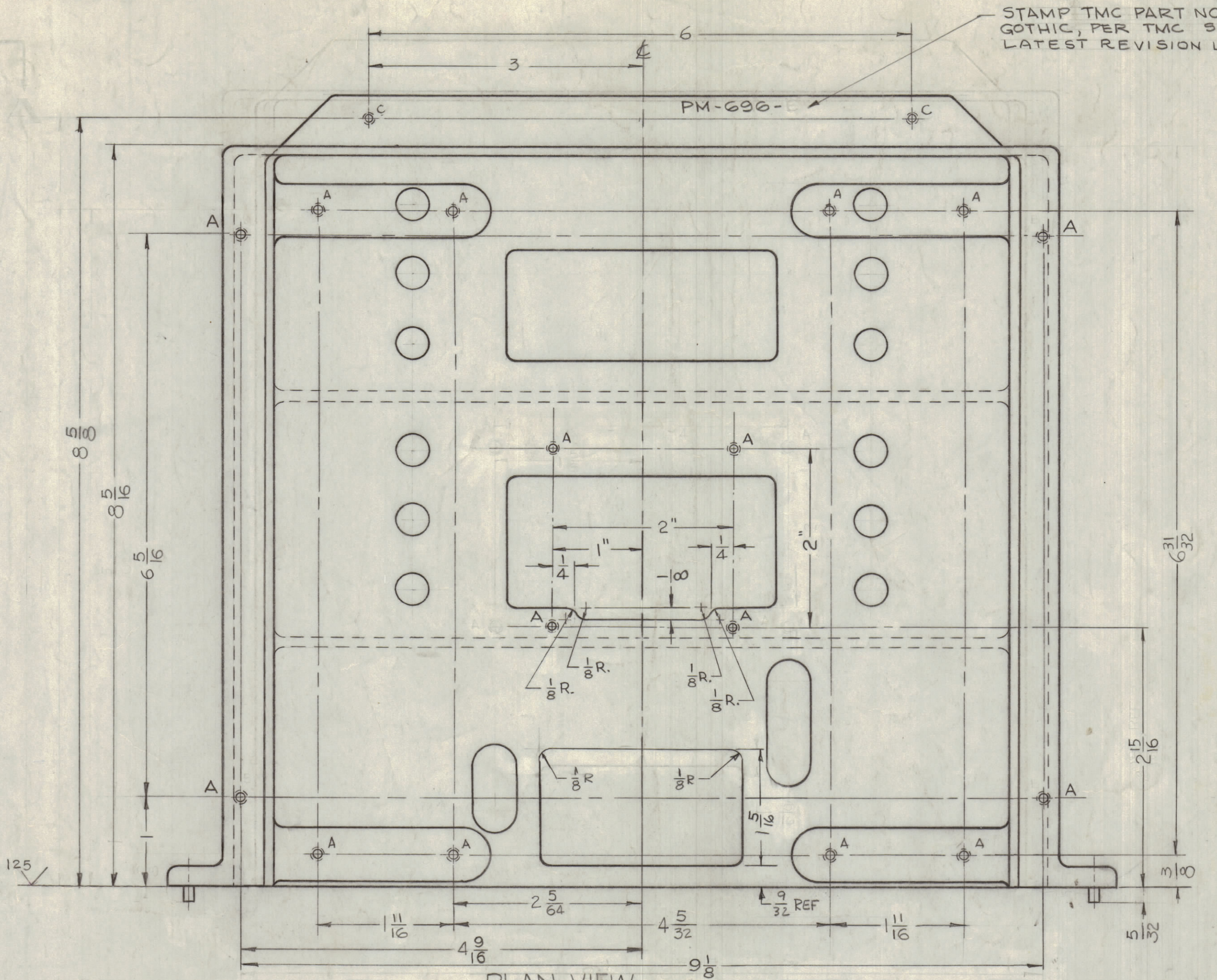
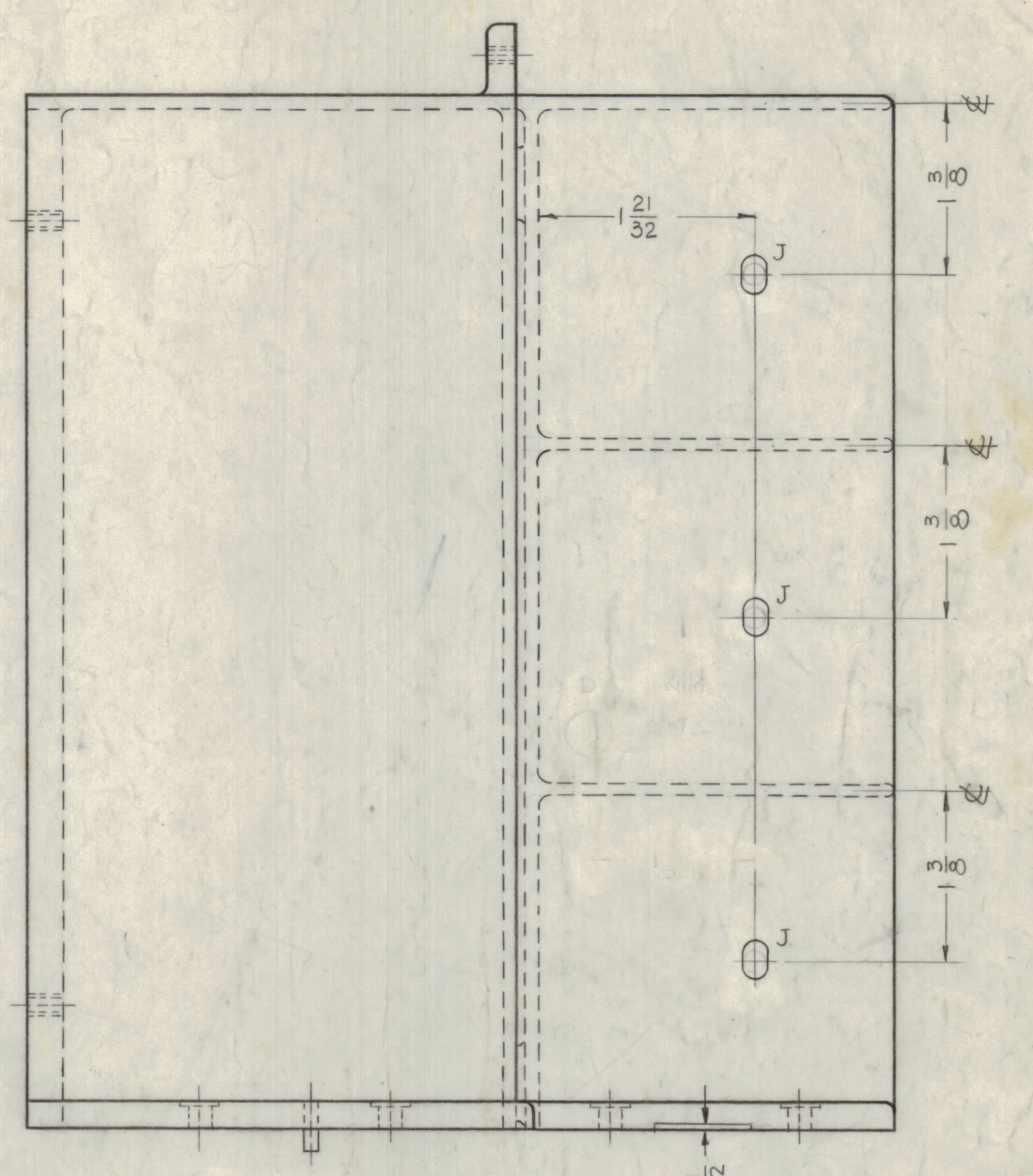


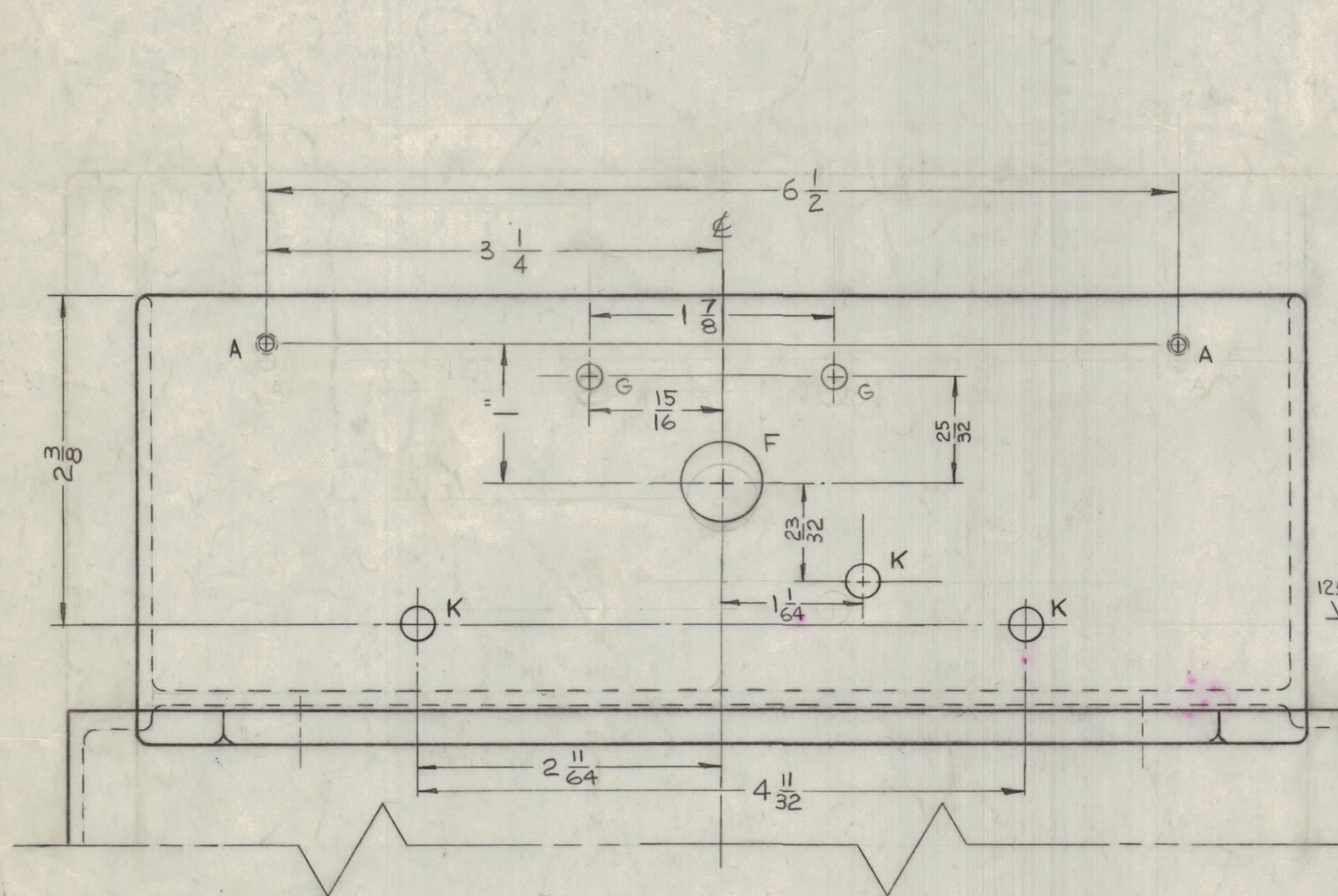
LEFT SIDE VIEW



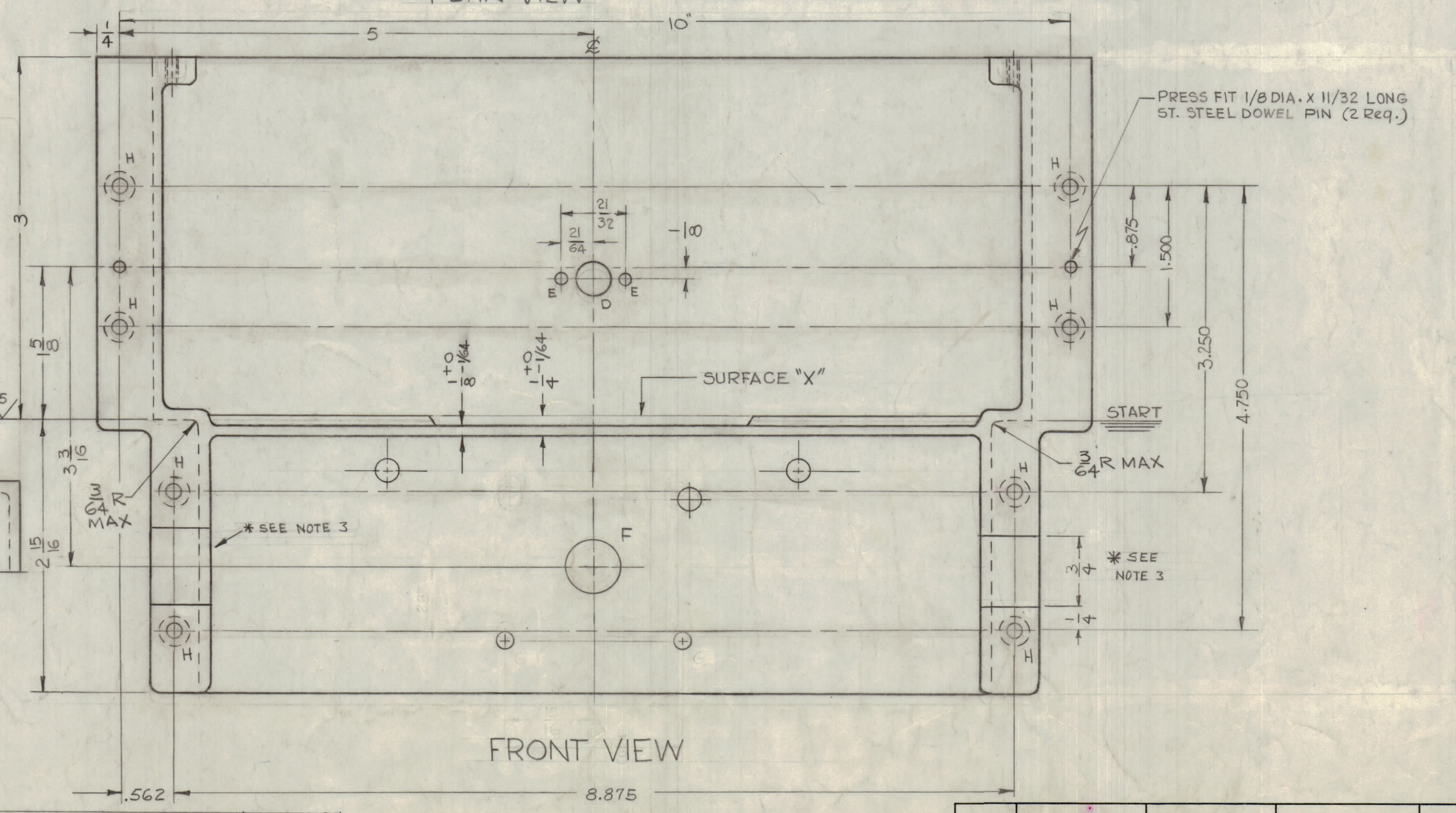
PLAN VIEW



RIGHT SIDE VIEW



VIEW A-A NOTE: FOR LOCATION OF "F" HOLE REFER TO FRONT VIEW



FRONT VIEW

STAMP TMC PART NO 1/8 HIGH BLACK GOTHIC, PER TMC 9-727, WITH LATEST REVISION LETTER

PRESS FIT 1/8 DIA. X 11/32 LONG ST. STEEL DOWEL PIN (2 Req.)

HOLE	DESCRIPTION	REQ'D
A	*36 DRILL (106 DIA) & TAP THRU 6-32	18
B	DELETED	
C	*29 DRILL (136 DIA) & TAP THRU 8-32	2
D	3/8 DIA.	1
E	1/8 DIA.	4
F	9/16 DIA. (SEE NOTE 1)	1
G	3/16 DIA. (SEE NOTE 1)	2
H	13/64 DIA. SPOT FACE AT BACK 7/16 DIA	8
J	5/16 X 3/16 SLOT.	6
K	1/4 DIA. (SEE NOTE *1)	3
L	1/2 DIA.	1

- NOTES:
- 1) DRILL THRU 3 WALLS
  - 2) STARTING SURFACE TO BE MACHINED WITH RESPECT TO SURFACE "X"
  - 3) \*-MILL BOTH SIDES 3/4 X 1/32 DEEP.

REV	DESCRIPTION	DATE	CH. NO.	DRAFTS	CHECKER	ENG. APP.
E	DWG UPDATED & CLARIFIED 1/2 CANGES	11/1/63	10699			
D	UPDATED DWG FOR EASE OF ASSY	11-11-63	10801			
C	15 "X" HOLES (10 "A" HOLES AND 5 "B" HOLES) DELETED. CUTAWAY AT 1/8 DIM. ADDED TO TOP VIEW. 2 "D" DIM WAS 3/4. DIM WAS 1/2. 6 "E" DIM WAS 1/2. 2 "G" DIM WAS 3/8. DIM WAS 1/4. DIM WAS 1/4.	8-30-63	9880			
B	REDRAWN & REVISED	7-2-63	9492	N.P.		

REV	DESCRIPTION	DATE	CH. NO.	DRAFTS	CHECKER	ENG. APP.
H	* NOTE ADD: 3/4 X 1/2 SLOT ADD. TO DWT.	5-30-63	12892			
G	C2. ON HOLE LEGEND: "D" WAS 3 REQ. "L" ADDED TO LEGEND. ONE "D" HOLE DELE. ONE "D" HOLE CHANGED TO "L" HOLE.	11-10-63	12893			
F	D8. C3 FRONT VIEW: 1/4 DIM. ADD. 5/8" DIM. DELETED	6-8-64	11510			
F	D9. LEFT SIDE VIEW: 3/4 DIM. DELETED					

REQ. PER UNIT	MODEL	SECTION	ASSY. NO.	DATE
1	GPR-92			8-18-63

REQ. ITEM	PART NO.	DESCRIPTION	SYMBOL
REF: C5-122			
STOCK SIZE			
MATERIAL			
TYPE & TEMPER			
HEAT TREAT. SPEC.			
FINISH & SPEC. NO.			

THE TECHNICAL MATERIEL CORP.  
MAMARONECK, NEW YORK

MACHINING  
RF SECTION

DRAWN: *[Signature]* CHECKED: *[Signature]* FINAL APPROVAL: *[Signature]*

DATE: 7-5-63

PM-696

SHEET OF

PM-696 H