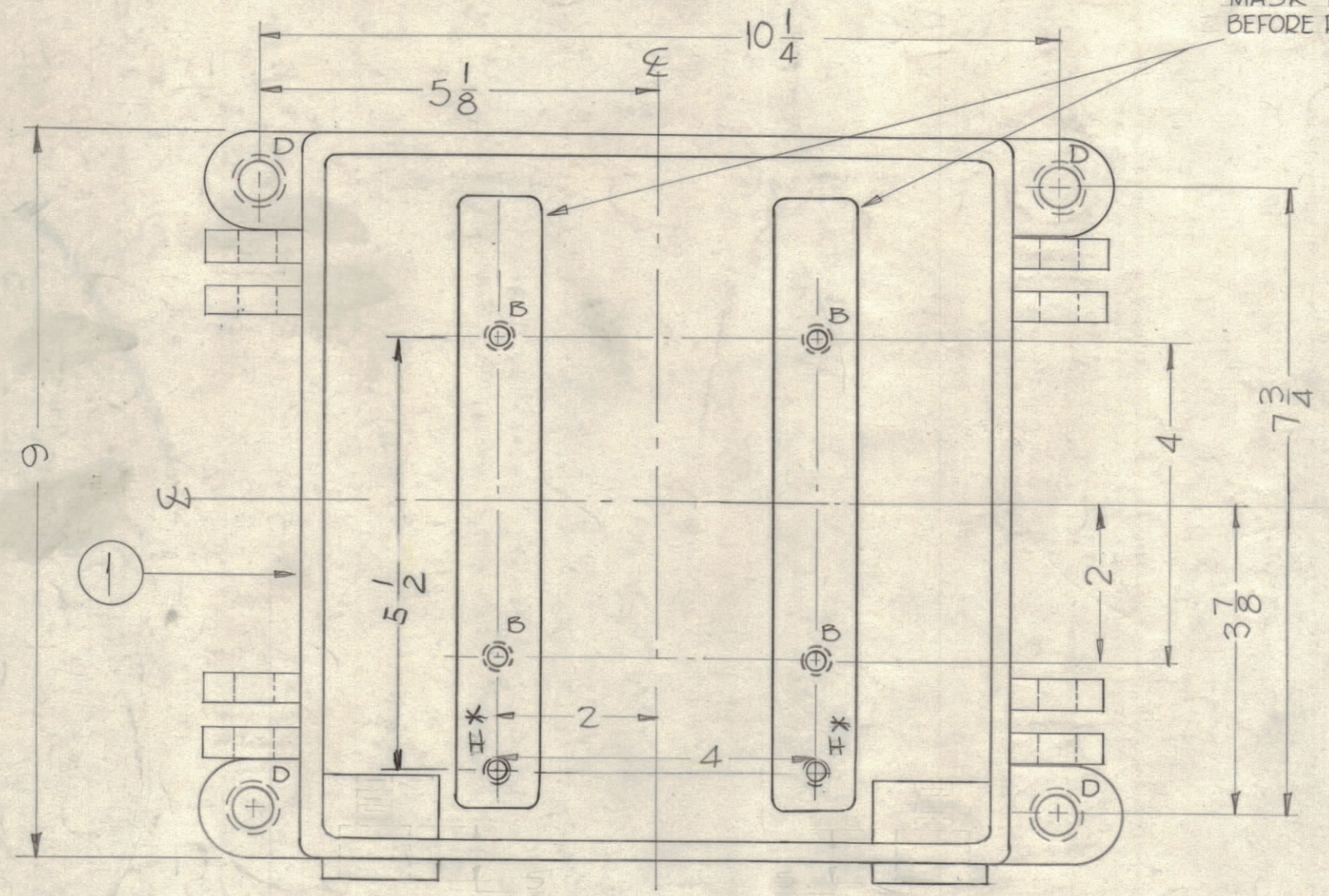
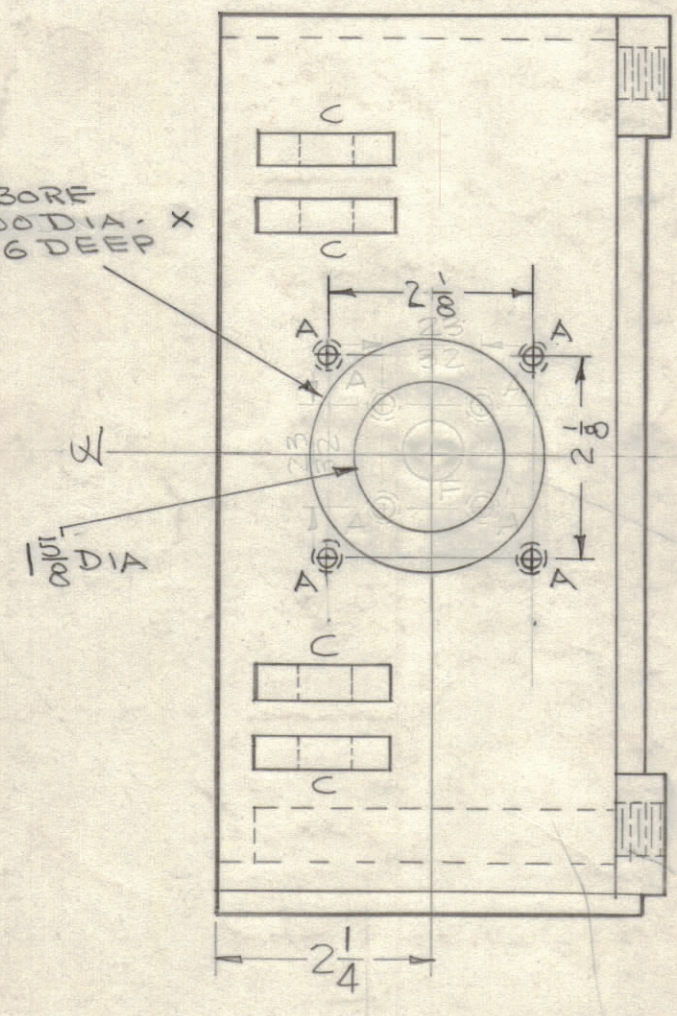


HOLES	REQ.
A ~ Drill & Tap 1/4-20	4
B ~ Blind Tap 8-32 x 3/8 Deep	4
C 3/64 (.516) Dia.	4
D Drill & Tap 3/8 x 16	4
Drill & Tap From Outside E Drill & Tap 3/8 x 16 x 7/8 Deep	4
F No 47 (.078) Drill 3/16 Deep	2
"G" DRILL & TAP 1/4-20	4
"H" BLIND TAP 8-32 x 3/8 Deep	2

* NOTES -
 ADDED "G" & "H" HOLES TO
 MASK PM 717-1

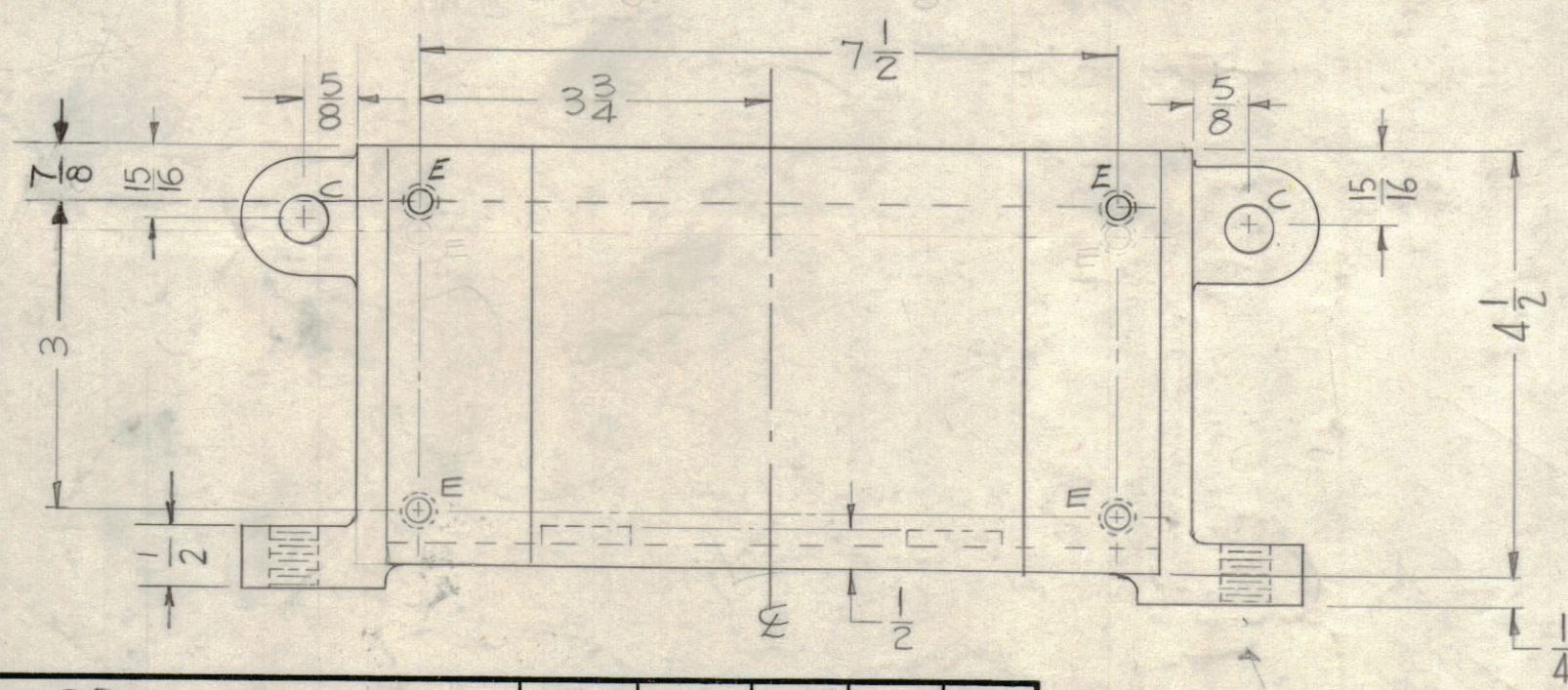


C BORE
 2.500 DIA.
 .156 DEEP



NOTE #1
 MOUNTING PLATES (ITEMS 283) HAVE BEEN
 INCORPORATED IN CASTING CS-120.

NOTE: FINISH
 S-101 CAUSTIC DIP
 S-114 ZINC CHROMATE PRIMER
 S-115 SMOOTH GREY ENAMEL



SYM	ZONE	DESCRIPTION	DATE	CH. NO.	DRAFTS	CHECKER	ENG. APP.
D		NOTE ADD.	2-28-91		C.D.L.		CB
C	G5	DELE 2 "F" HOLES, RELOC. 2 "F" HOLES	6-20-78	21659	W.B.		CB
B	G5.6	2 "E" HOLES AND DIM. RELOCATED	10/1/65	14912	F.V.K.		CB
A	G6	1 1/8 D. WAS 1 3/8 + .004	12-15-64	13020	H.L.A.		CB

UNLESS OTHERWISE SPECIFIED:
 DIMENSIONS ARE IN INCHES
 TOLERANCES ON
 FRACTIONS ± 1/64 DECIMALS ± .005 ANGLES ± 1/2°

SCALE
 MAXIMUM ALLOWABLE TOLERANCES HAVE BEEN DETERMINED AND ANY DEVIATIONS WILL BE CAUSE FOR REJECTION.
 REMOVE ALL BURRS & SHARP EDGES

REQ. PER UNIT	MODEL	SECTION	ASS'Y. NO.	DATE
1	PAL-15, 16			2-28-91
1	VRA-5			9-5-61
1	VRA-6			9-5-61

REQ.	ITEM	PART NO.	DESCRIPTION	SYMBOL
1	CS-120		Case, Casting	
THE TECHNICAL MATERIEL CORP. MAMARONECK, NEW YORK				
CASE CASE, MACHINING				
VRA				
DRAWN		CHECKED		FINAL APPROVAL
A.R.T.		A.B.		S.I.A.M.
ELEC. DES. APP.		MECH. DES. APP.		SHEET OF
		PM-717-D		1