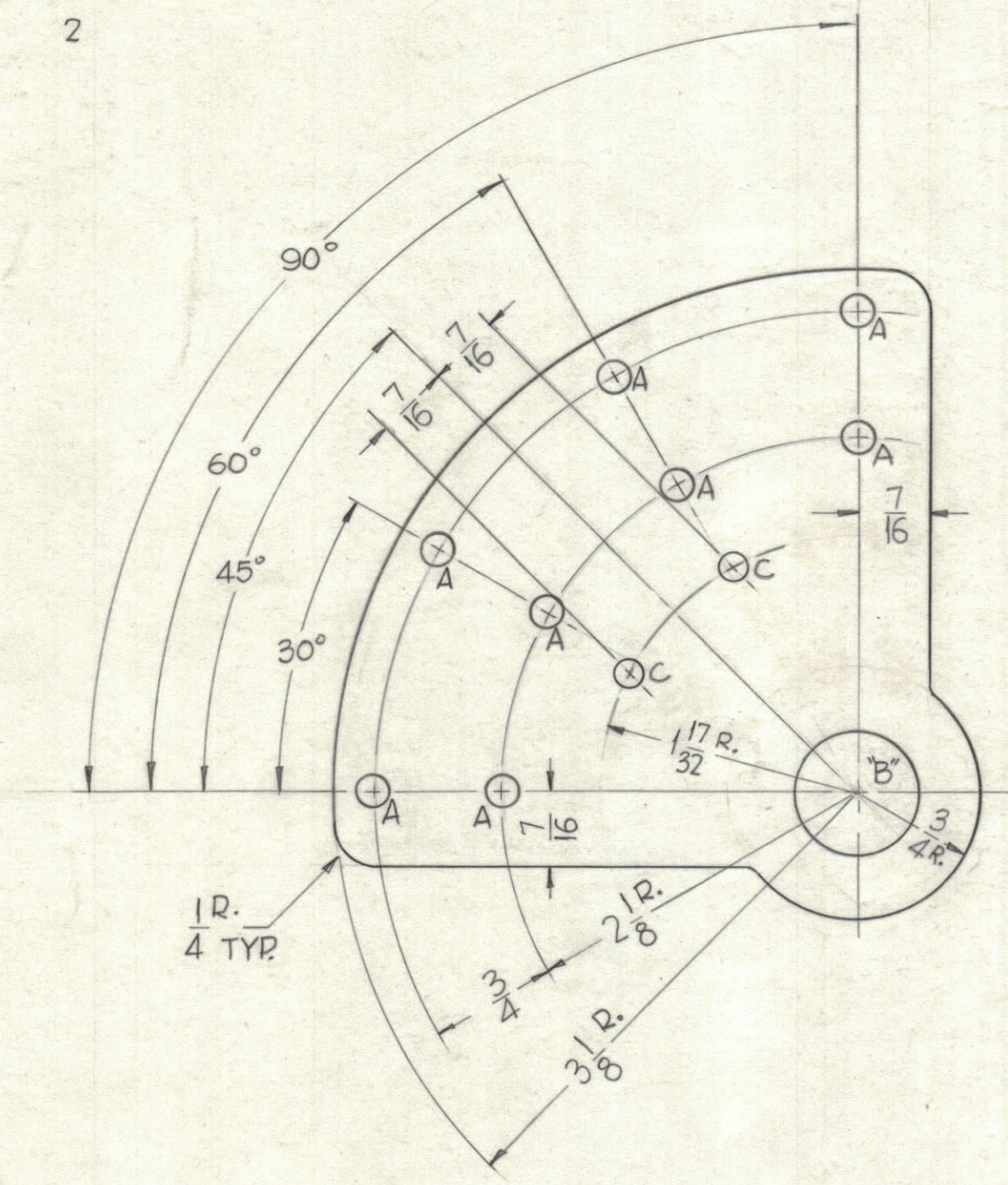


NOTICE TO PERSONS RECEIVING THIS DRAWING
 THE TECHNICAL MATERIEL CORPORATION claims proprietary right in the material disclosed hereon. This drawing is issued in confidence for engineering information only and may not be reproduced or used to manufacture anything shown hereon without permission from THE TECHNICAL MATERIEL CORPORATION to the u. er. This drawing is loaned for mutual assistance and is subject to recall at any time.

Property of:
 THE TECHNICAL MATERIEL CORPORATION
 MAMARONECK, NEW YORK

HOLES	REQ.
A ~ 13/64 Dia.	8
B ~ .750 ±.0015 Dia.	1
C ~ 11/64 Dia.	2

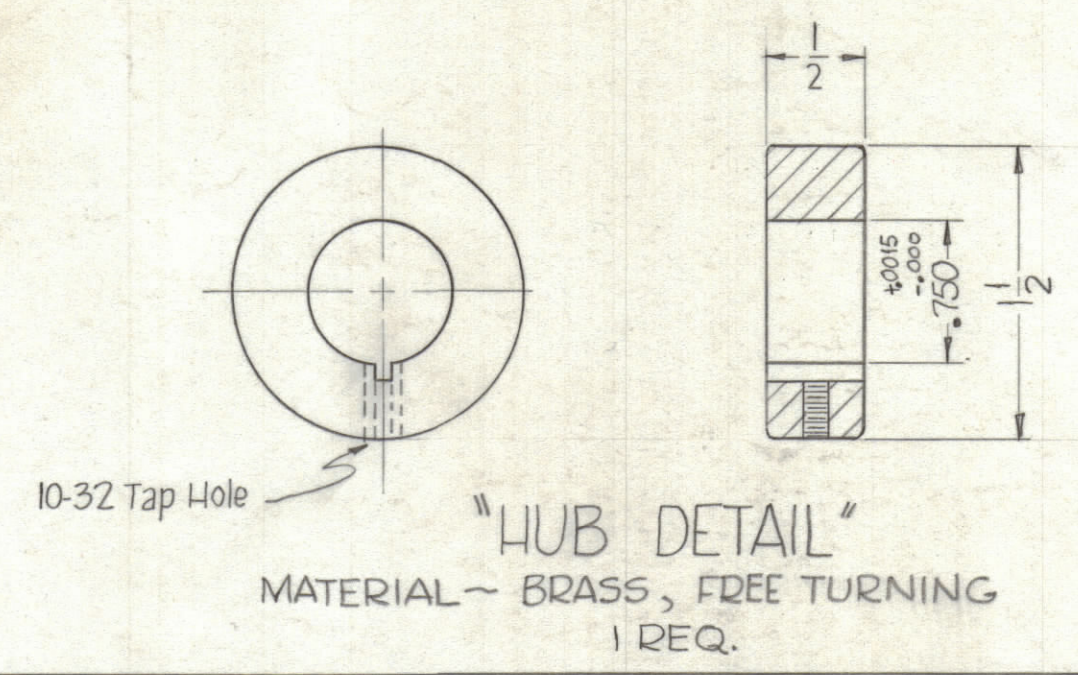


NOTE ~ ROUND ALL EDGES 1/16 R.

"PLATE-ROTOR DETAIL"
 Material - 1/8 THK. BRASS, 1/2 HARD
 1 Req.

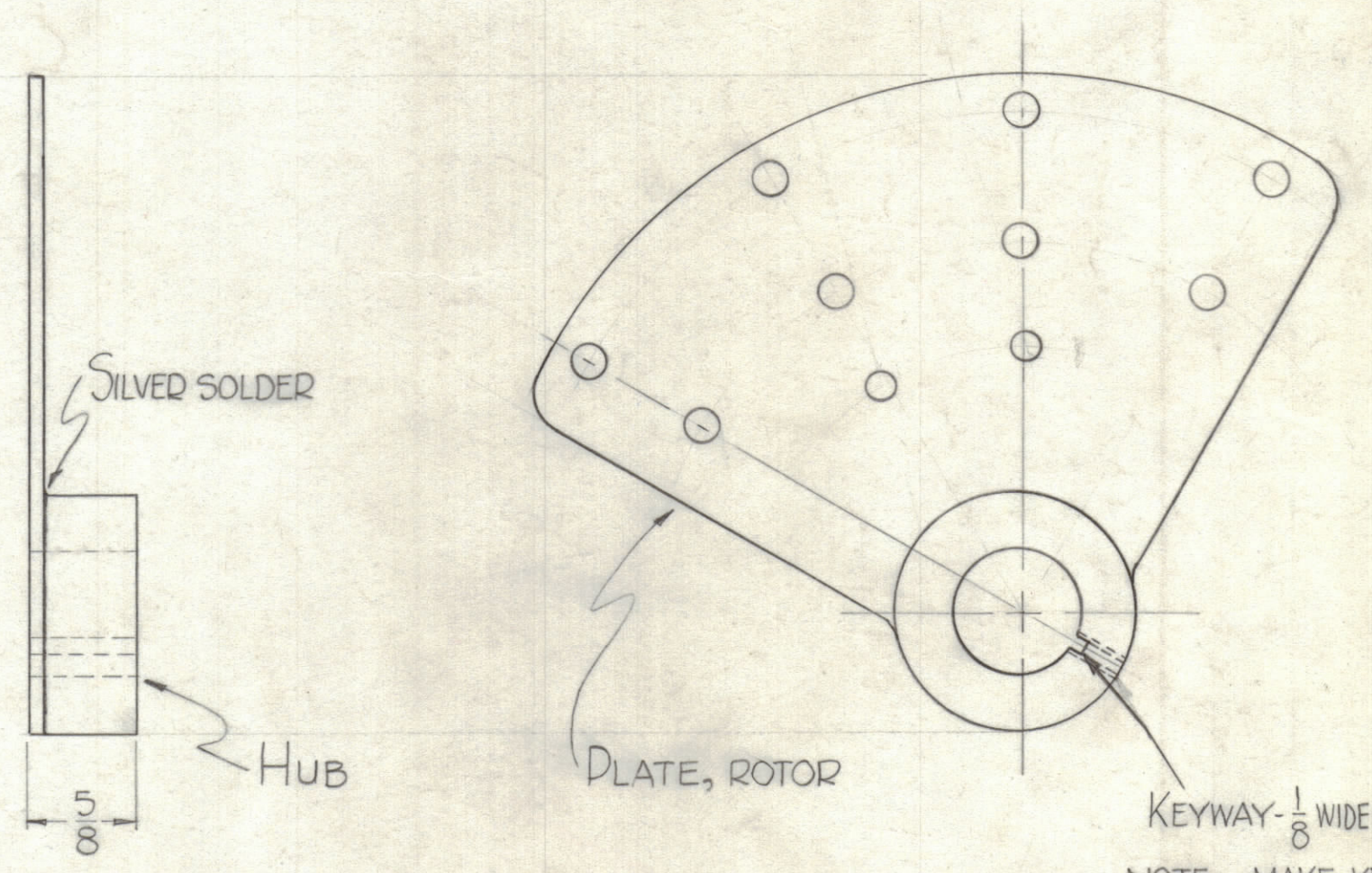
OBSOLETE

NO LONGER REQ.
 NO LONGER OBSOLETE
 2-21-62
 PH



"HUB DETAIL"
 MATERIAL ~ BRASS, FREE TURNING
 1 REQ.

NOTE ~ RELATIONSHIP BETWEEN KEYWAY, TAPPED HUB HOLE AND ROTOR PLATE.



"ASSEMBLY"
 FINISH ~ SILVER PLATE

KEYWAY - 1/8 WIDE x .070 DEEP
 NOTE ~ MAKE KEYWAY AFTER ASS'Y. TOL. ± 0.5° ON POSITIONING.

SYM	ZONE	DESCRIPTION	DATE	CH. NO.	DRAFTS	CHECKER	ENG. APP.
A	C7	NO LONGER REQ. NOTE ADDED	2-16-62	6380	G.S.		

UNLESS OTHERWISE SPECIFIED:
 DIMENSIONS ARE IN INCHES
 TOLERANCES ON FRACTIONS ± 1/64 DECIMALS ± .005 ANGLES ± 1/2°

MAXIMUM ALLOWABLE TOLERANCES HAVE BEEN DETERMINED AND ANY DEVIATIONS WILL BE CAUSE FOR REJECTION. REMOVE ALL BURRS & SHARP EDGES

REQ. PER UNIT	MODEL	SECTION	ASS'Y. NO.	DATE
1	GPT-40K	AS-120		11-14-61

USED ON

REQ. ITEM	PART NO.	DESCRIPTION	SYMBOL
SEE NOTES	SEE NOTES	THE TECHNICAL MATERIEL CORP. MAMARONECK, NEW YORK	
SEE NOTES	SEE NOTES	ROTOR, "L" SECTION, PA BANDSWITCH	
MATERIAL		DRAWN: D.D. Mann CHECKED: RJZZO FINAL APPROVAL: [Signature]	
TYPE & TEMPER		HEAT TREAT. SPEC.	
FINISH & SPEC. NO.		ELEC. DES. APP. MECH. DES. APP. SHEET OF	
		PM-719 A	