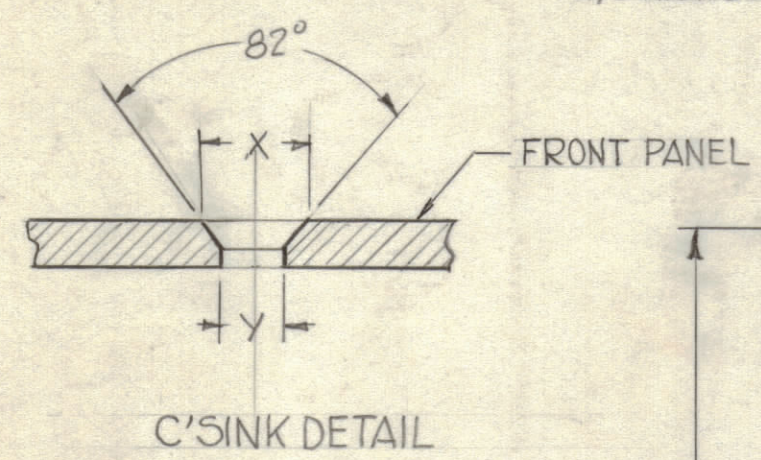


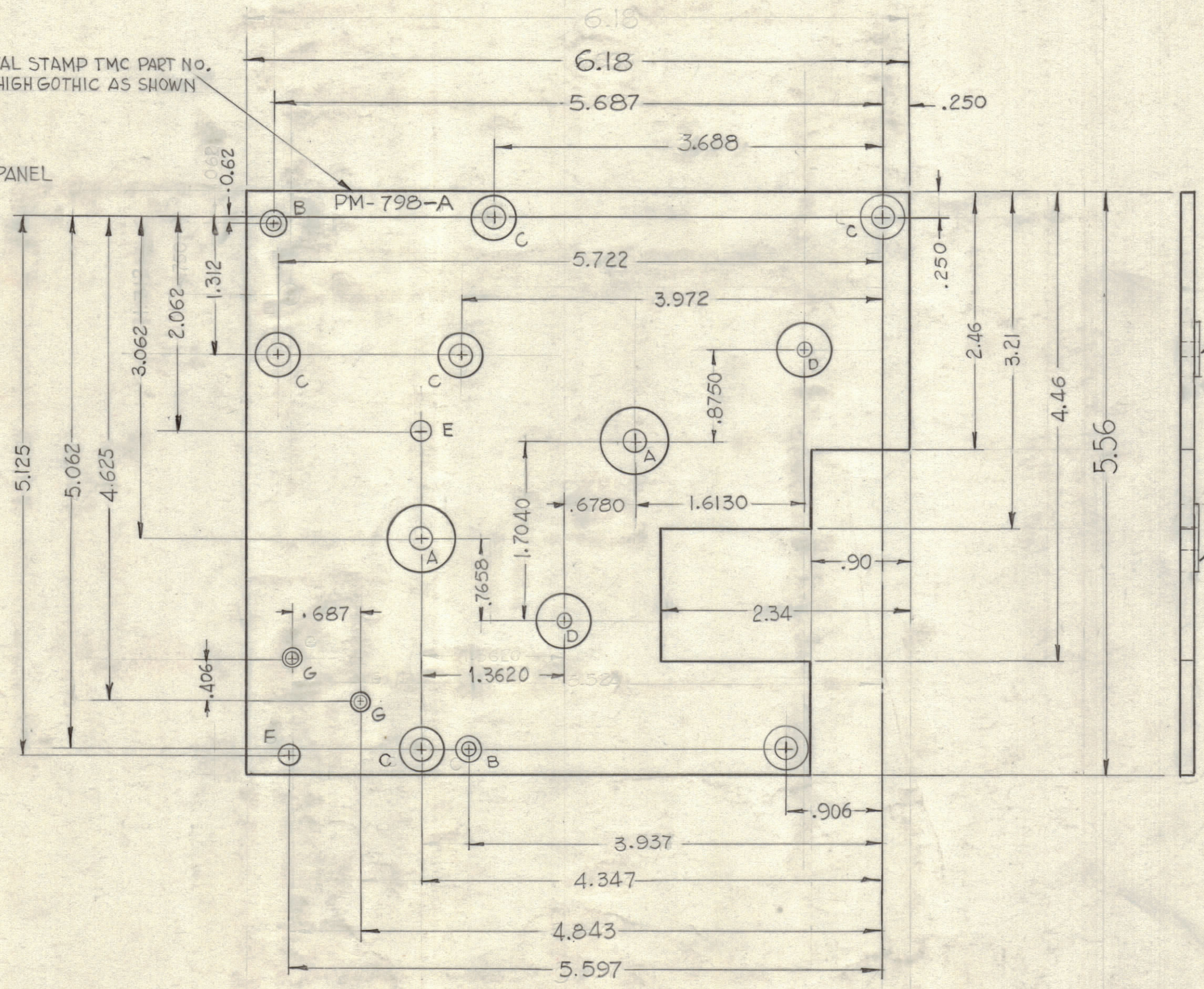
REVISIONS							
ZONE	SYM	DESCRIPTION	DATE	E.M.N. NO.	DRAFT	CHKD	APPR
A3	A	MATERIAL THICKNESS WAS .125	9-5-62	7175	98.	JL	W

LEGEND		
HOLE	DESCRIPTION	REQ.
A	.6249-.6246 DIA.	2
B	SEE C'SINK DETAIL	2
C	SEE C'SINK DETAIL	6
D	.4999-.4996 DIA.	2
E	DRILL & TAP FOR 8-32	1
F	.188 DIA.	1
G	SEE C'SINK DETAIL	2



C'SINK DETAIL			
HOLES	DESCRIPTION	X	Y
B	4-40	.230	.120
C	10-32	.390	.196
G	2-56	.177	.090

METAL STAMP TMC PART NO. 1/8 HIGH GOTHIC AS SHOWN



2 MOUNT IN ALL 'D' HOLES AS SHOWN AFTER FINISHING

1 MOUNT IN ALL 'A' HOLES AS SHOWN AFTER FINISHING

NOTICE TO PERSONS RECEIVING THIS DRAWING

THE TECHNICAL MATERIEL CORPORATION claims proprietary right in the material disclosed hereon. This drawing is issued in confidence for engineering information only and may not be reproduced or used to manufacture anything shown hereon without permission from THE TECHNICAL MATERIEL CORPORATION to the user. This drawing is loaned for mutual assistance and is subject to recall at any time.

Property of:
THE TECHNICAL MATERIEL CORPORATION
MAMARONECK, NEW YORK

Q'TY./UNIT	MODEL USED ON	ASS'Y. NO.
SCALE	CODE	
DO NOT SCALE		

THE CONTENTS OF THIS DRAWING ARE THE EXCLUSIVE PROPERTY OF THE TECHNICAL MATERIEL CORP. ITS UNAUTHORIZED USE OR REPRODUCTION IN WHOLE OR IN PART IS STRICTLY FORBIDDEN.

2	2	BB-126-4	BEARING, RACE	D
2	1	BB-126-5	BEARING, RACE	A
REQ'D.	ITEM	PART NUMBER	DESCRIPTION	SYMBOL
KRUY LIST OF MATERIAL				
MATERIAL			THE TECHNICAL MATERIEL CORP.	
.156 THK. ALUMINUM			MAMARONECK, NEW YORK	
5052-H32			TITLE	
FINISH			PLATE, FRONT #2	
5404 YEL. IRIDITE			DRAWN G-D-L	
UNLESS OTHERWISE SPECIFIED, DIMENSIONS ARE IN INCHES AND INCLUDE CHEMICALLY APPLIED OR PLATED FINISHES			DATE 7-26-62	
DECIMALS .X ± .05			CHECKED JHC	
FRACTIONS ± 1/64			DATE	
ANGLES ± 0° 30'			ELECT. DES. JHC	
TOLERANCES			DATE 7-26-62	
MECH. DES. JHC			SHEET	

NOTES

PM-798
A