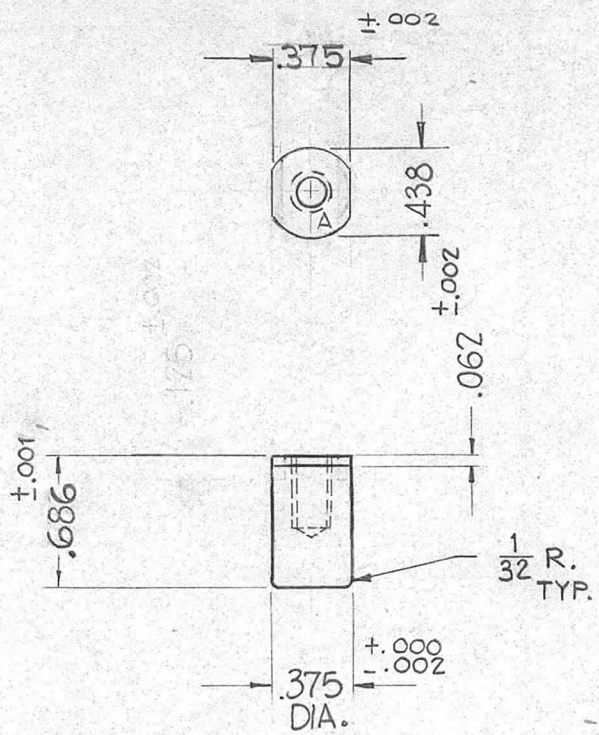


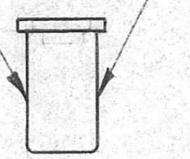
UNIT	MODEL	ASS'Y. NO.	DATE
32	GPT-40K	AX-267	6-22-61
16	GPT-10K		6-28-61
32	GPT-40K(1)4	AX-267	12-23-63
14	AS-125	AX-339	12-23-63

PM-702



A- DRILL & TAP FOR 10-32 X 3/8 DEEP ——— 1 REQ.

SURFACES: These Must Be Free Of All Tooling Marks.



Class 16 Finish End Only

FINISHING NOTES

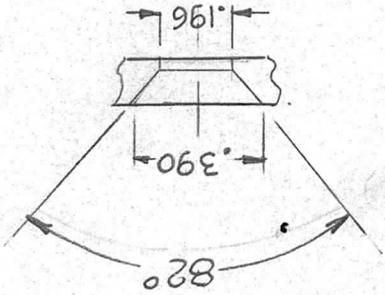
- S-245 SILVER PLATE, BRIGHT.
- S-423 IRIDITE, 18-P SILVER-KOTE
- S-423 IRIDITE, 18-P SILVER-KOTE

NOTE - ALL DIMENSIONS APPLY AFTER FINISHING

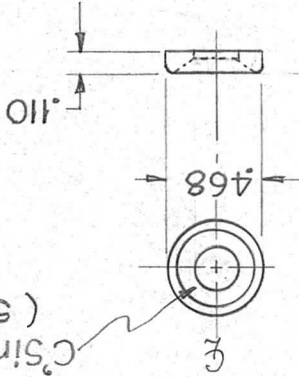
ISSUE	ITEM	CHANGED FROM	DATE	CH. NO.	DRAFTS	CHECKER	ENG. APP.	REQ.	ITEM	PART NO.	DESCRIPTION	SYMBOL	
D	1	DWG UPDATED	2/23/63	10642	<i>[Signature]</i>	<i>[Signature]</i>	<i>[Signature]</i>				THE TECHNICAL MATERIEL CORP. MAMARONECK, NEW YORK SLUG, CONTACT BANDSWITCH	PM-702 D	
C	1	SURFACE NOTE ADDED	2-25-63	8311	<i>[Signature]</i>	<i>[Signature]</i>	<i>[Signature]</i>			AS NOTED			
B	1	.125 DIM DELETED	8-14-62	7060	G.S.	<i>[Signature]</i>	<i>[Signature]</i>			STOCK SIZE			
A	1	.375 Dim. Was. 312	12-12-61	6031	L.H.	<i>[Signature]</i>	<i>[Signature]</i>			BRASS			
										MATERIAL			
TOLERANCES			SCALE: — DO NOT SCALE —					HALF HARD FREE MACH.		John C. Biele		RB/FIS	
DEC. DIM. ± FRAC. DIM. ± ANGULAR DIM. ±			MAXIMUM ALLOWABLE TOLERANCES HAVE BEEN DETERMINED AND ANY DEVIATIONS WILL BE CAUSE FOR REJECTION. REMOVE ALL BURRS AND SHARP EDGES					TYPE & TEMPER		DRAWN		CHECKED	
								SEE NOTE				FINAL APPROVAL	
								FINISH & SPEC. NO.		ELEC. DES. APP		MECH. DES. APP	

DEC. DIM. ±		ANGULAR DIM. ±		REMOVE ALL BURRS AND SHARP EDGES WILL BE CAUSE FOR REJECTION. MAXIMUM ALLOWABLE TOLERANCES HAVE BEEN DETERMINED AND ANY DEVIATIONS	
ISSUE ITEM		CHANGED FROM		SCALE:	
A		C'SINK DETAIL ADDED		DATE	5-10-62
B		DWG UPDATED		CH. NO.	6683
				DRAFTS	6-D.L.
				CHECKER	<i>[Signature]</i>
				ENG. APP.	<i>[Signature]</i>
TOLERANCES		TYPE & TEMPER		1/2 H	
		HEAT TREAT. SPEC.		SEE NOTE	
		DRAWN		<i>[Signature]</i>	
		CHECKED		<i>[Signature]</i>	
		ELEC. DES. APP.		MAMARONECK, NEW YORK	
		MECH. DES. APP.		THE TECHNICAL MATERIEL CORP.	
PART NO.		STOCK SIZE		MATERIAL	
				BRASS	
REQ. ITEM		DESCRIPTION		SPACER, CONTACT, BANDSWITCH	
		SYMBOL		PM-704 B	

FINISH ~
 5-245 ~ SILVER PLATE, BRIGHT
 5-423 ~ IRIDITE, 18P SILVER KOTE



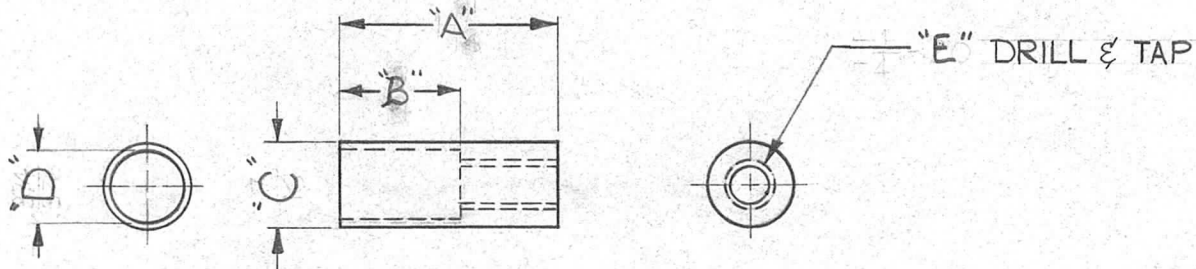
C'Sink for #10-32 F.H.S. (SEE DETAIL)



REQ. PER UNIT	MODEL	ASS'Y. NO.	DATE
32	GPT-40K	AX-267	5-28-61
32	GPT-40K(14)	AX-267	12-23-63
14	AS-125	AX-339	12-23-63

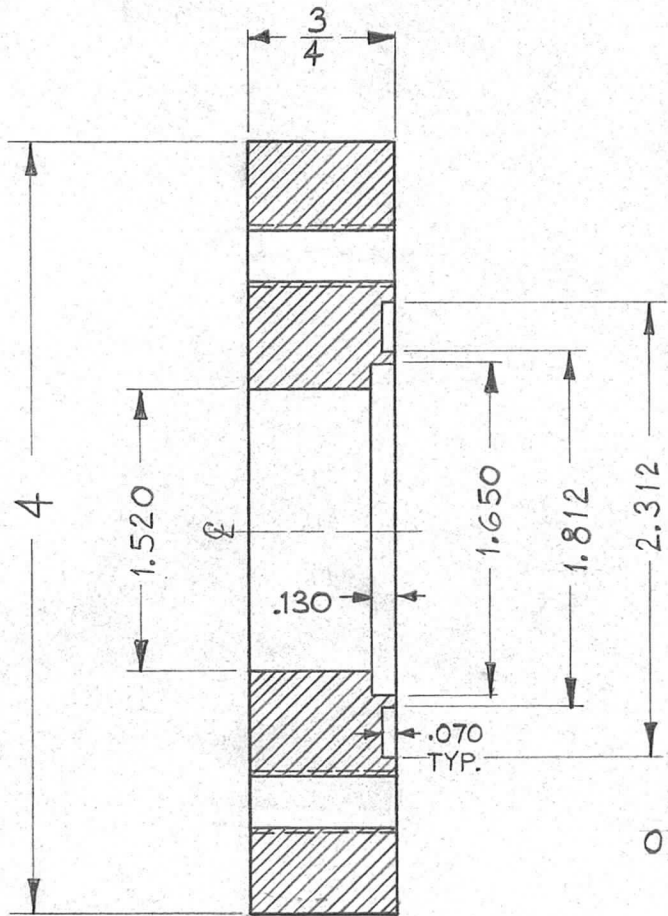
PM-704 B

TMC PART NO.	LINE DIA.	DIM. "A"	DIM. "B"	DIM. "C"	DIM "D"	DIM "E"	REQ. PER. UNIT	USED ON			PM-707	C
								MODEL	ASS'Y. NO.	DATE		
PM-707-1	1 5/8	1 11/16	3/4	7/16	.374/.376	1/4-20	1	AX-272	A-2118	8-18-61		
PM-707-2	7/8	1 1/2	1 5/16	.226 ± .002	.176 ± .002	8-32	1	AX-408		2-7-63		



ISSUE	ITEM	CHANGED FROM	DATE	CH. NO.	DRAFTS	CHECKER	ENG. APP.	REQ. ITEM	PART NO.	DESCRIPTION	SYMBOL				
C	2	PM707-1 & CHART CLARIFIED	2-7-63	8248	GP	Jde	Jde	SEE CHART "C"		THE TECHNICAL MATERIEL CORP. MAMARONECK, NEW YORK ADAPTOR, CONTACT 70Ω	C				
	1	PM-707-2 ADDED						STOCK SIZE							
B	2	DIM. CHART ADDED	5-23-62	5753	GG	Jde	Jde	BRASS							
	1	FINISH ADDED													
A	2	1 11/16 DIM. WAS 1 1/8	10-11-61	5681	GG	bb	JB								
	1	3/4 DIM. WAS 5/8													
TOLERANCES			SCALE: FULL (DO NOT SCALE)					1/2 HARD							
DEC. DIM. ±			MAXIMUM ALLOWABLE TOLERANCES HAVE BEEN DETERMINED AND ANY DEVIATIONS WILL BE CAUSE FOR REJECTION. REMOVE ALL BURRS AND SHARP EDGES					TYPE & TEMPER	HEATTREAT. SPEC.	DRAWN	CHECKED	FINAL APPROVAL			
FRAC. DIM. ± 1/64								SILVER PLATE							
ANGULAR DIM. ±								SILVER KOTE IRIDITE							
								FINISH & SPEC. NO.	ELEC. DES. APP	MECH. DES. APP	PM-707	C			

REQ. PER. UNIT	USED ON			PM-708	A
	MODEL	ASS'Y. NO.	DATE		
1			8-21-61		

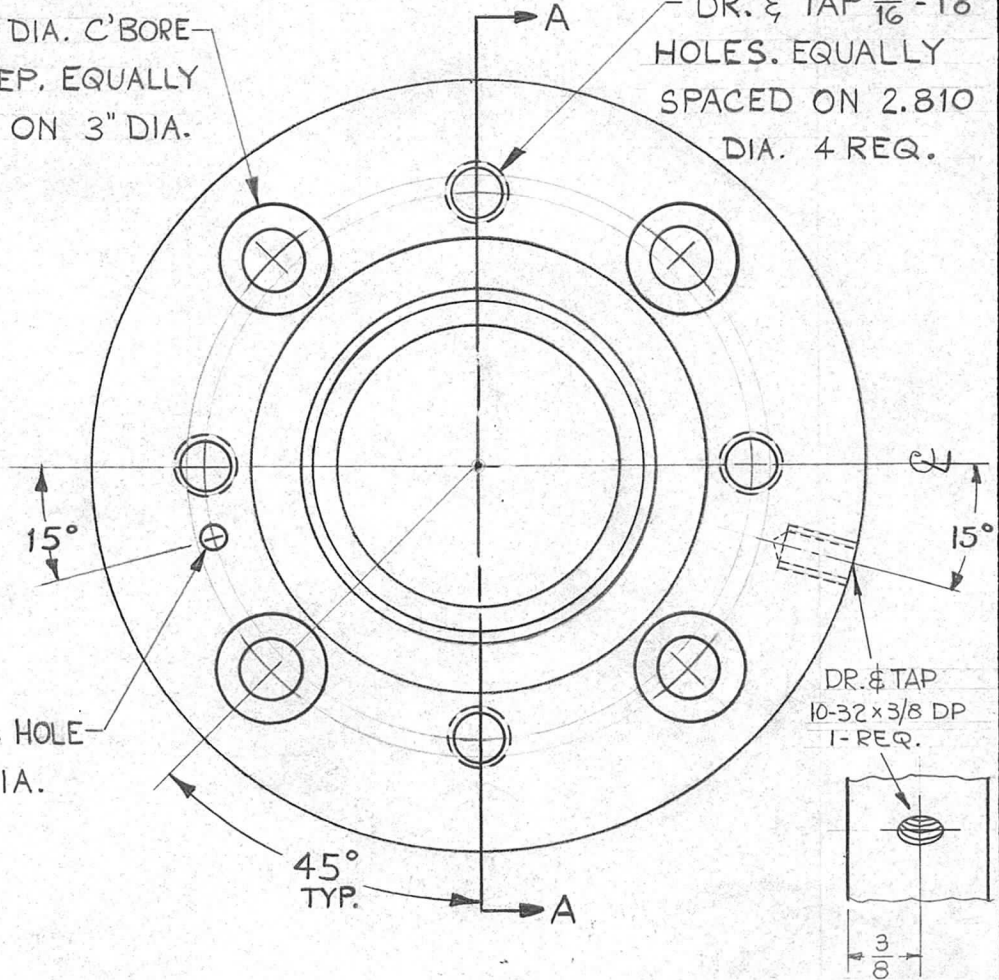


SECTION "A-A"

DRILL $\frac{5}{16}$ DIA. C'BORE $\frac{9}{16} \times \frac{3}{8}$ DEEP, EQUALLY SPACED ON 3" DIA. 4 REQ.

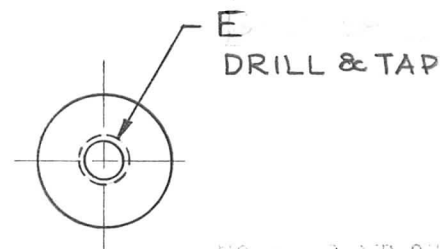
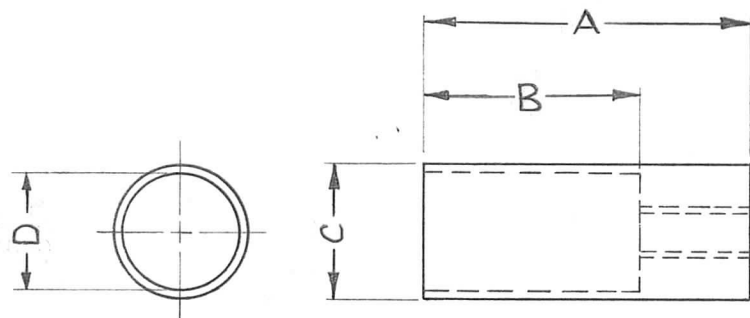
DR. & TAP $\frac{5}{16}$ -18 HOLES. EQUALLY SPACED ON 2.810 DIA. 4 REQ.

.125 DIA. HOLE ON 2.810 DIA.



REQ.	ITEM	PART NO.	DESCRIPTION			SYMBOL
		3/4	THE TECHNICAL MATERIEL CORP.			
		STOCK SIZE	MAMARONECK, NEW YORK			
		BRASS	PLATE, ADAPTOR			
		MATERIAL	1 5/8 E.I.A.			
		1/2 HARD	W.A.F.	J.H.L.	J.O.B.	
		TYPE & TEMPER	DRAWN	CHECKED	FINAL APPROVAL	
		HEATTREAT. SPEC.				
		S-245 SILVER PLATE, BRIGHT				
		S-423 IRIDITE 18-P SILVER-KOTE				
		FINISH & SPEC. NO.	ELEC. DES. APP.	MECH. DES. APP.		
					PM-708	A

TMC PART NO.	LINE DIA.	DIM. A	DIM. B	DIM. C	DIM. D	DIM. E	REQ. PER UNIT	USED ON			PM-710	D
								MODEL	ASS'Y. NO.	DATE		
PM-710-1	1 $\frac{5}{8}$	1 $\frac{11}{16}$	1 $\frac{1}{8}$	$\frac{11}{16}$	$\frac{.587}{.589}$	1/4 -20	1	TRC-3500-700		8-29-61		
							1	TER-5000		8-29-61		
							1	AX-271	A-2113	5-24-62		
PM-710-2	7/8	1 1/2	15/16	.341	.291 \pm .002	10-32	1	AX-406		2-8-63		
PM-710-3	7/8	2 1/2	1	.341	.291 \pm .002	1/4-20	1	AX 452		5-21-64		



NOTICE TO PERSONS RECEIVING THIS DRAWING

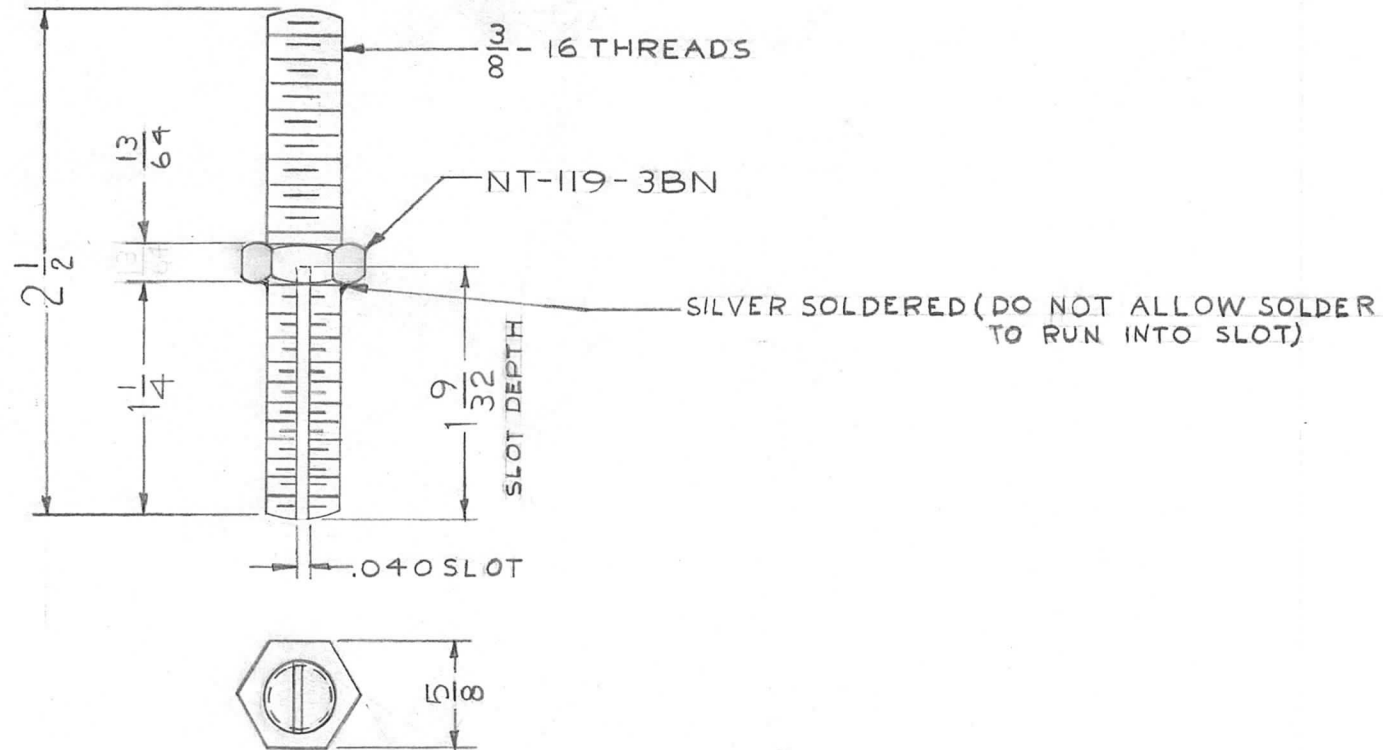
THE TECHNICAL MATERIEL CORPORATION claims proprietary right in the material disclosed hereon. This drawing is issued in confidence for engineering information only and may not be reproduced or used to manufacture anything shown hereon without permission from THE TECHNICAL MATERIEL CORPORATION to the user. This drawing is loaned for mutual assistance and is subject to recall at any time.

Property of:

THE TECHNICAL MATERIEL CORPORATION
MAMARONECK, NEW YORK

ISSUE	ITEM	CHANGED FROM	DATE	CH. NO.	DRAFTS	CHECKER	ENG. APP.	REQ. ITEM	PART NO.	DESCRIPTION	SYMBOL						
D	1	PM-710-3 ADD. TO CHART	8.14.64	12135	KB	NO.											
C	2	ENLARGED CHART	2-8-63	8249	MJT				SEE "C" DIM.	THE TECHNICAL MATERIEL CORP. MAMARONECK, NEW YORK							
	1	ADDED PM-710-2							STOCK SIZE								
B	2	DIM. CHART ADDED	5-24-62	5753	BB				BRASS	ADAPTOR CONTACT, 50Ω,							
	1	FINISH WAS POLISH NATURAL							MATERIAL								
A	1	POLISH NATURAL, ADDED	1-31-62	6269	G.S.				1/2 HARD								
TOLERANCES			SCALE: DO NOT SCALE					TYPE & TEMPER		HEAT TREAT. SPEC.		DRAWN		CHECKED		FINAL APPROVAL	
DEC. DIM. \pm			MAXIMUM ALLOWABLE TOLERANCES HAVE BEEN DETERMINED AND ANY DEVIATIONS WILL BE CAUSE FOR REJECTION. REMOVE ALL BURRS AND SHARP EDGES					SILVER PLATE				ELEC. DES. APP.		MECH. DES. APP.		PM-710 D	
FRAC. DIM. \pm 1/64								SILVER KOTE IRIDITE									
ANGULAR DIM. \pm								FINISH & SPEC. NO.									

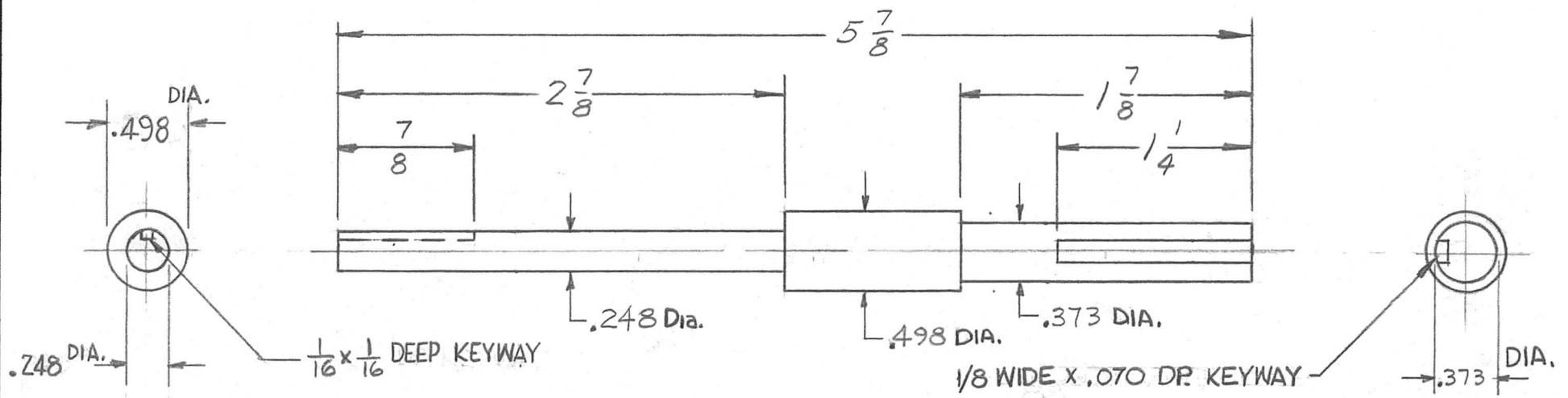
REQ. PER. UNIT	USED ON			PM-711
	MODEL	ASS'Y. NO.	DATE	
	4	TRC 20K	9-26-61	



REQ.	ITEM	PART NO.	DESCRIPTION			SYMBOL	
			THE TECHNICAL MATERIEL CORP. MAMARONECK, NEW YORK				
		STOCK SIZE	STUD, TERMINATING, SECONDARY				
		BRASS					
		MATERIAL					
ISSUE	ITEM	CHANGED FROM	DATE	CH. NO.	DRAFTS	CHECKER	ENG. APP.
TOLERANCES			SCALE:				
DEC. DIM. \pm			MAXIMUM ALLOWABLE TOLERANCES HAVE BEEN DETERMINED AND ANY DEVIATIONS WILL BE CAUSE FOR REJECTION. REMOVE ALL BURRS AND SHARP EDGES				
FRAC. DIM. \pm Y64							
ANGULAR DIM. \pm							
FINISH & SPEC. NO.		HEATTREAT. SPEC.	DRAWN	CHECKED	FINAL APPROVAL		
SILVER PLATE S-245			EG	<i>[Signature]</i>	PM-711		
ELEC. DES. APP		MECH. DES. APP					

THE CONTENTS OF THIS DRAWING ARE THE EXCLUSIVE PROPERTY OF THE TECHNICAL MATERIEL CORP. ITS UNAUTHORIZED USE OR REPRODUCTION IN WHOLE OR IN PART IS STRICTLY FORBIDDEN.

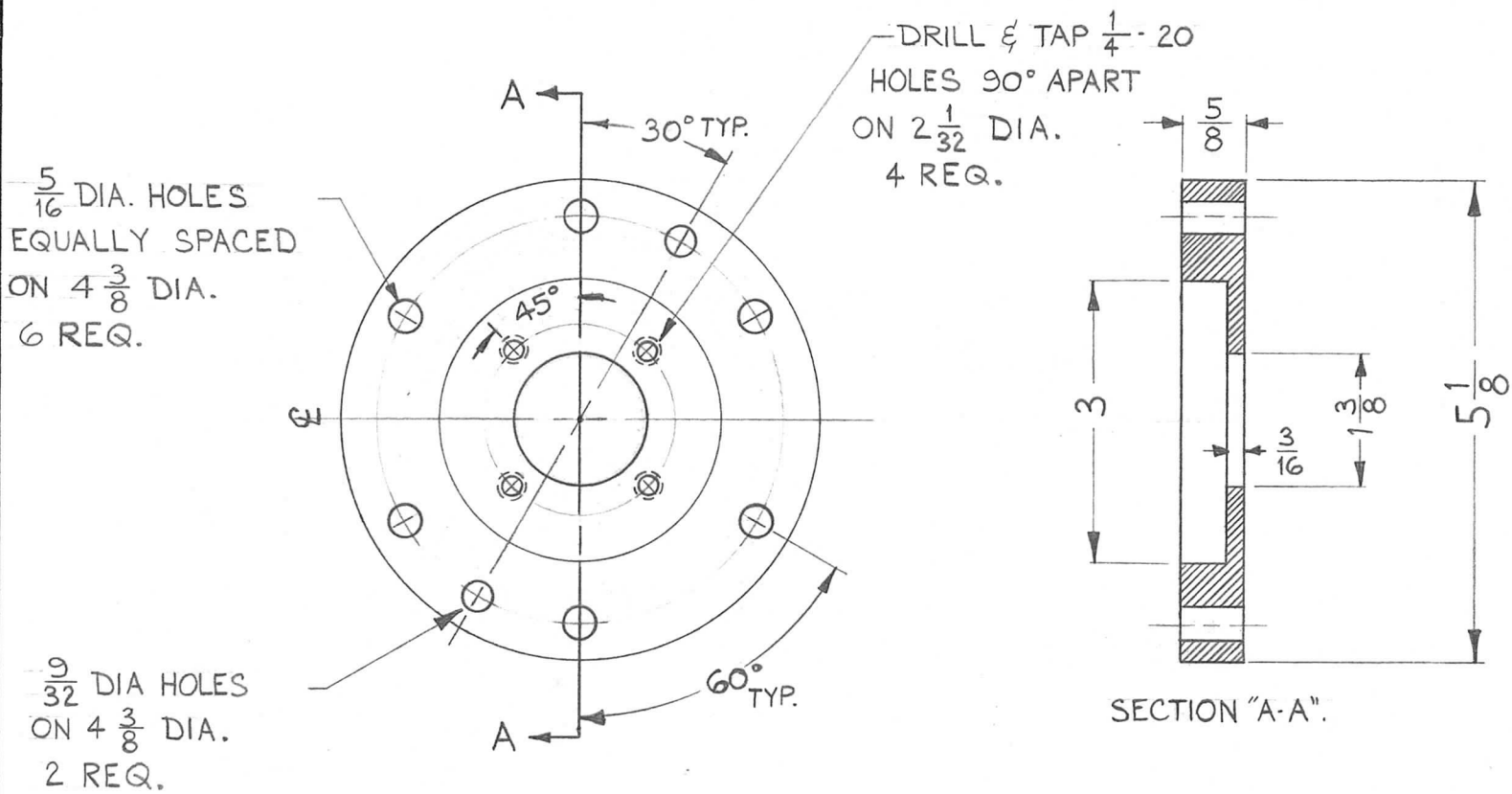
REQ. PER UNIT	USED ON			PM-718
	MODEL	ASS'Y. NO.	DATE	
	1	AT-103	GPT-40 K	



REQ.	ITEM	PART NO.	DESCRIPTION			SYMBOL
		$\frac{1}{2}$ DIA.	THE TECHNICAL MATERIEL CORP.			
		STOCK SIZE	MAMARONECK, NEW YORK			
		STAINLESS STEEL	SHAFT, CAPACITOR			
		MATERIAL				
SYM	DESCRIPTION	DATE	CH. NO.	DRAFTS	CHECKER	ENG. APP.
UNLESS OTHERWISE SPECIFIED: DIMENSIONS ARE IN INCHES TOLERANCES ON FRAC. $\pm 1/64$ DEC. $\pm .005$ ANGLES $\pm 1/20$		SCALE:		MAXIMUM ALLOWABLE TOLERANCES HAVE BEEN DETERMINED AND ANY DEVIATIONS WILL BE CAUSE FOR REJECTION. REMOVE ALL BURRS AND SHARP EDGES		
		303				
		TYPE & TEMPER	HEAT TREAT. SPEC.	DRAWN	CHECKED	FINAL APPROVAL
		S104-PASSIVATE				PM-718
		FINISH & SPEC. NO.	ELEC. DES. APP.	MECH. DES. APP.		

THE CONTENTS OF THIS DRAWING ARE THE EXCLUSIVE PROPERTY OF THE TECHNICAL MATERIEL CORP. ITS UNAUTHORIZED USE OR REPRODUCTION IN WHOLE OR IN PART IS STRICTLY FORBIDDEN.

REQ. PER UNIT 1	USED ON		PM-722
	MODEL	ASS'Y. NO.	
	AX-279	DATE 10-21-61	



REQ.	ITEM	PART NO.	DESCRIPTION			SYMBOL
		5/8	THE TECHNICAL MATERIEL CORP.			
		STOCK SIZE	MAMARONECK, NEW YORK			
		ALUMINUM	PLATE, ADAPTER			
		MATERIAL	3/8 TO QDL			
SYM	DESCRIPTION	DATE	CH. NO.	DRAFTS	CHECKER	ENG. APP.
UNLESS OTHERWISE SPECIFIED: DIMENSIONS ARE IN INCHES.		SCALE: 2:1 (DO NOT SCALE)		2024-T3	<i>M.A.F.</i>	<i>RLZZO</i>
TOLERANCES ON FRAC. ± 1/64 DEC. ± .005 ANGLES ± 1/2°		MAXIMUM ALLOWABLE TOLERANCES HAVE BEEN DETERMINED AND ANY DEVIATIONS WILL BE CAUSE FOR REJECTION. REMOVE ALL BURRS AND SHARP EDGES		TYPE & TEMPER S404 YELL. IRIDITE	HEATTREAT. SPEC.	DRAWN <i>RLZZO</i>
				FINISH & SPEC. NO.	ELEC. DES. APP.	MECH. DES. APP. PM-722

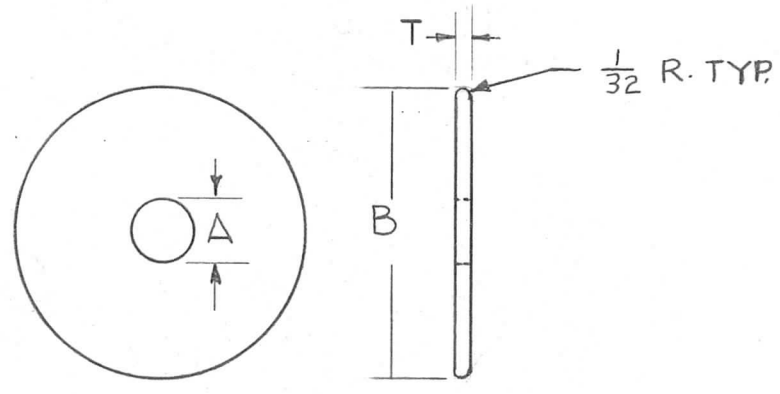
STANDARD DRAWING

THE CONTENTS OF THIS DRAWING ARE THE EXCLUSIVE PROPERTY OF THE TECHNICAL MATERIEL CORP. ITS UNAUTHORIZED USE OR REPRODUCTION IN WHOLE OR IN PART IS STRICTLY FORBIDDEN.

REQ. PER UNIT	USED ON			PM-723	B
	MODEL	ASS'Y. NO.	DATE		
			11-8-61		

TMC PARTS No.	A	B	T	MODEL
PM-723-1	5/16	1-1/2	.081	TRC-5K
PM-723-2	9/16	3	1/8	TRC-20K

	MATERIAL		PLATING
N	NAVAL BRONZE	R	NO PLATING
B	BRASS	N	NICKEL PLATE



PM-723-1-N-R
 TMC No. MATERIAL PLATING

SYM	DESCRIPTION	DATE	CH. NO.	DRAFTS	CHECKER	ENG. APP.	REQ. ITEM	PART NO.	DESCRIPTION	SYMBOL	
B	1/32 R. NOTE ADDED	4/15/64	11213	A.M.	<i>J.W.D.</i>	<i>O.R.</i>			THE TECHNICAL MATERIEL CORP. MAMARONECK, NEW YORK CONTACT, SPARK GAP CIRCULAR		
A	ON CHART "B-BRASS-N-NICKEL PLATE" ADDED	11-27-61	5942	G.D.L.	<i>G.D.L.</i>	<i>O.R.</i>					
UNLESS OTHERWISE SPECIFIED: DIMENSIONS ARE IN INCHES TOLERANCES ON FRAC. ± 1/64 DEC. ± .005 ANGLES ± 1/2°							SCALE: MAXIMUM ALLOWABLE TOLERANCES HAVE BEEN DETERMINED AND ANY DEVIATIONS WILL BE CAUSE FOR REJECTION. REMOVE ALL BURRS AND SHARP EDGES		G.D.L. <i>J.W.D.</i> <i>O.R.</i> DRAWN CHECKED FINAL APPROVAL		
							TYPE & TEMPER	HEATTREAT. SPEC.			
							FINISH & SPEC. NO.	ELEC. DES. APP.	MECH. DES. APP.	PM-723-	B

THE CONTENTS OF THIS DRAWING ARE THE EXCLUSIVE PROPERTY OF THE TECHNICAL MATERIEL CORP. ITS UNAUTHORIZED USE OR REPRODUCTION IN WHOLE OR IN PART IS STRICTLY FORBIDDEN.

REQ. PER UNIT

1

MODEL

HFI-1

USED ON

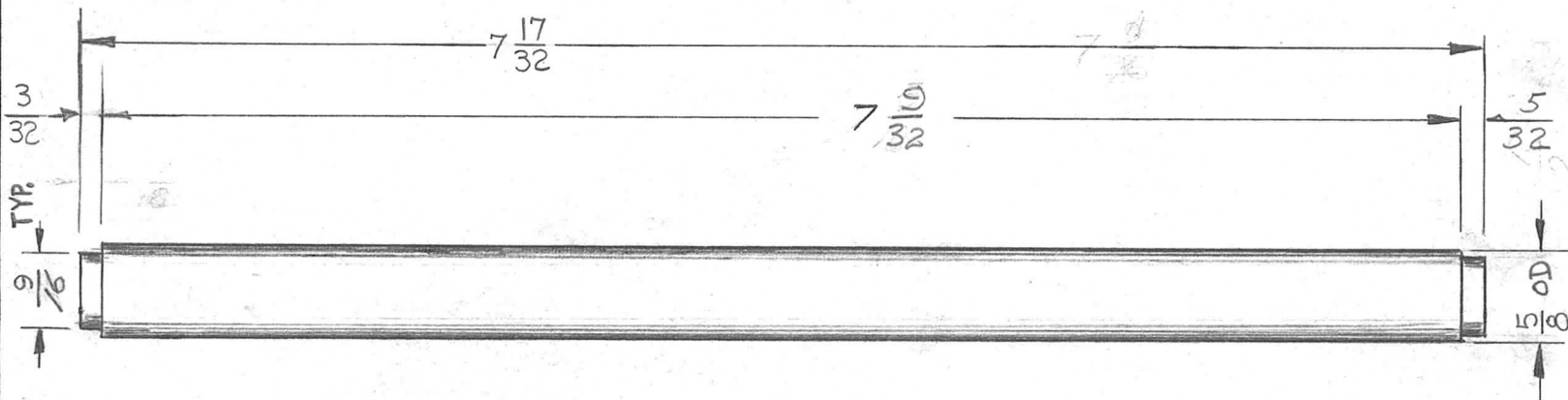
ASS'Y. NO.

DATE

10-31-61

PM-725

B



REF: 1/4" IPS - 6061-T6

							REQ. ITEM	PART NO.	M. GELLMAN	DESCRIPTION	SYMBOL	
							5/8 OD - 1/2 I.D.		THE TECHNICAL MATERIEL CORP.			
							STOCK SIZE		MAMARONECK, NEW YORK			
B	DIMENSIONS COMPLETELY REVISED		3-23-62	6521	E.E.	W.C.	S.M.	CABLE FEEDTHRU				
A	5/32 DIM WAS 3/16 7-1/2 DIM WAS 7-17/32		2-23-62	6414	G.S.	W.C.	W.C.					
SYM	DESCRIPTION	DATE	CH. NO.	DRAFTS	CHECKER	ENG. APP.	MATERIAL					
UNLESS OTHERWISE SPECIFIED:		SCALE:					TYPE & TEMPER		HEATTREAT. SPEC.	DRAWN	CHECKED	FINAL APPROVAL
DIMENSIONS ARE IN INCHES		MAXIMUM ALLOWABLE TOLERANCES HAVE BEEN DETERMINED AND ANY DEVIATIONS WILL BE CAUSE FOR REJECTION.					YELLOW IRIDITE					
TOLERANCES ON		REMOVE ALL BURRS AND SHARP EDGES					FINISH & SPEC. NO.		ELEC. DES. APP.	MECH. DES. APP.	PM-725	B
FRAC. ± 1/64 DEC. ± .005 ANGLES ± 1/2°												

THE CONTENTS OF THIS DRAWING ARE THE EXCLUSIVE PROPERTY OF THE TECHNICAL MATERIEL CORP. ITS UNAUTHORIZED USE OR REPRODUCTION IN WHOLE OR IN PART IS STRICTLY FORBIDDEN.

REQ. PER UNIT

USED ON

MODEL

ASS'Y. NO.

DATE

1

TRC-20K

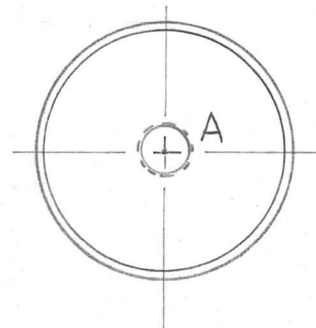
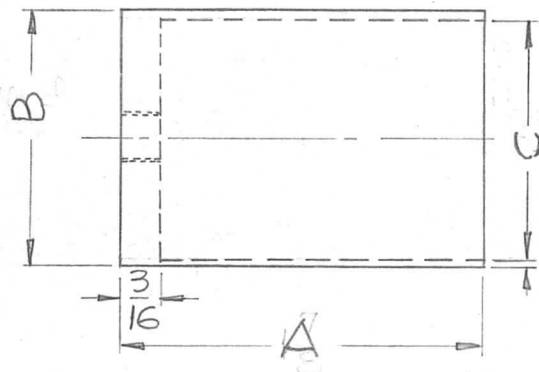
11-3-61

PM-727

A

TMC NO	"A"	B	C	IMPEDANCE
PM-727-1	1-7/8	1-5/16	1.231 ± .003	50 OHMS
PM-727-2	2 ± .005	.880 ± .002	.80 ± .003	70 OHMS

HOLE'S REQ.
A ~ 1/4-20 Tapped 1



REQ.	ITEM	PART NO.	DESCRIPTION				SYMBOL	
			THE TECHNICAL MATERIEL CORP. MAMARONECK, NEW YORK					
			STOCK SIZE					
Δ			COLUMNS B, C, D ADDED, PM-727-2 ADDED					
			2-27-62	6450	GG	LB	BRASS	
			MATERIAL					
							CONTACT, CUP TYPE 3/8 EIA, 50 OHM	
SYM	DESCRIPTION		DATE	CH. NO.	DRAFTS	CHECKER	ENG. APP.	
UNLESS OTHERWISE SPECIFIED: DIMENSIONS ARE IN INCHES TOLERANCES ON FRAC. ± 1/64 DEC. ± .005 ANGLES ± 1/2°			SCALE: MAXIMUM ALLOWABLE TOLERANCES HAVE BEEN DETERMINED AND ANY DEVIATIONS WILL BE CAUSE FOR REJECTION. REMOVE ALL BURRS AND SHARP EDGES					
TYPE & TEMPER		HEAT TREAT. SPEC.		DRAWN		CHECKED		
5-245 SILVER PLATE				D.J. [Signature]		[Signature]		
FINISH & SPEC. NO.		ELEC. DES. APP.		MECH. DES. APP.		FINAL APPROVAL		
				LB		PM-727 A		

THE CONTENTS OF THIS DRAWING ARE THE EXCLUSIVE PROPERTY OF THE TECHNICAL MATERIEL CORP. ITS UNAUTHORIZED USE OR REPRODUCTION IN WHOLE OR IN PART IS STRICTLY FORBIDDEN.

REQ. PER UNIT	USED ON		
	MODEL	ASS'Y. NO.	DATE
1	GPT-10K	A-2226	12-12-61
1	GPT-40K	"	12-12-61

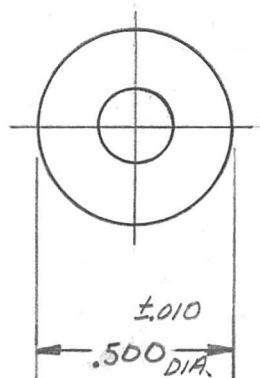
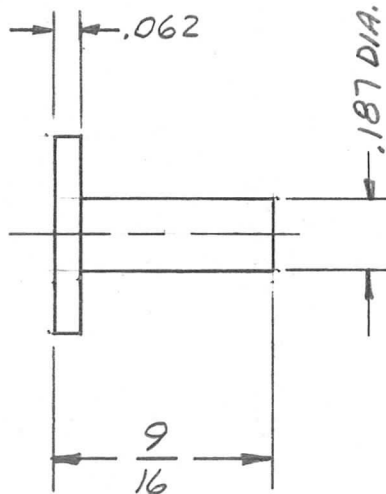
PM-729 A

NOTICE TO PERSONS RECEIVING THIS DRAWING

THE TECHNICAL MATERIEL CORPORATION claims proprietary right in the material disclosed hereon. This drawing is issued in confidence for engineering information only and may not be reproduced or used to manufacture anything shown hereon without permission from THE TECHNICAL MATERIEL CORPORATION to the user. This drawing is loaned for mutual assistance and is subject to recall at any time.

Property of:

THE TECHNICAL MATERIEL CORPORATION
MAMARONECK, NEW YORK



REQ.	ITEM	PART NO.	DESCRIPTION			SYMBOL
			THE TECHNICAL MATERIEL CORP. MAMARONECK, NEW YORK			
			1/2" BRASS ROD			
			STOCK SIZE			
A	.500 DIA. WAS .484	1-22-62 6228 G.S.	BRASS			PLUNGER, SWITCH ACTUATOR
SYM	DESCRIPTION	DATE	CH. NO.	DRAFTS	CHECKER	ENG. APP.
UNLESS OTHERWISE SPECIFIED: DIMENSIONS ARE IN INCHES TOLERANCES ON FRAC. ± 1/64 DEC. ± .005 ANGLES ± 1/2°		SCALE:		MAXIMUM ALLOWABLE TOLERANCES HAVE BEEN DETERMINED AND ANY DEVIATIONS WILL BE CAUSE FOR REJECTION. REMOVE ALL BURRS AND SHARP EDGES		
		1/2 HARD		ab		
		TYPE & TEMPER		HEAT TREAT. SPEC.		DRAWN
						CHECKED
						FINAL APPROVAL
		FINISH & SPEC. NO.		ELEC. DES. APP.		MECH. DES. APP.
						PM-729 A

THE CONTENTS OF THIS DRAWING ARE THE EXCLUSIVE PROPERTY OF THE TECHNICAL MATERIEL CORP. ITS UNAUTHORIZED USE OR REPRODUCTION IN WHOLE OR IN PART IS STRICTLY FORBIDDEN.

REQ. PER UNIT
7

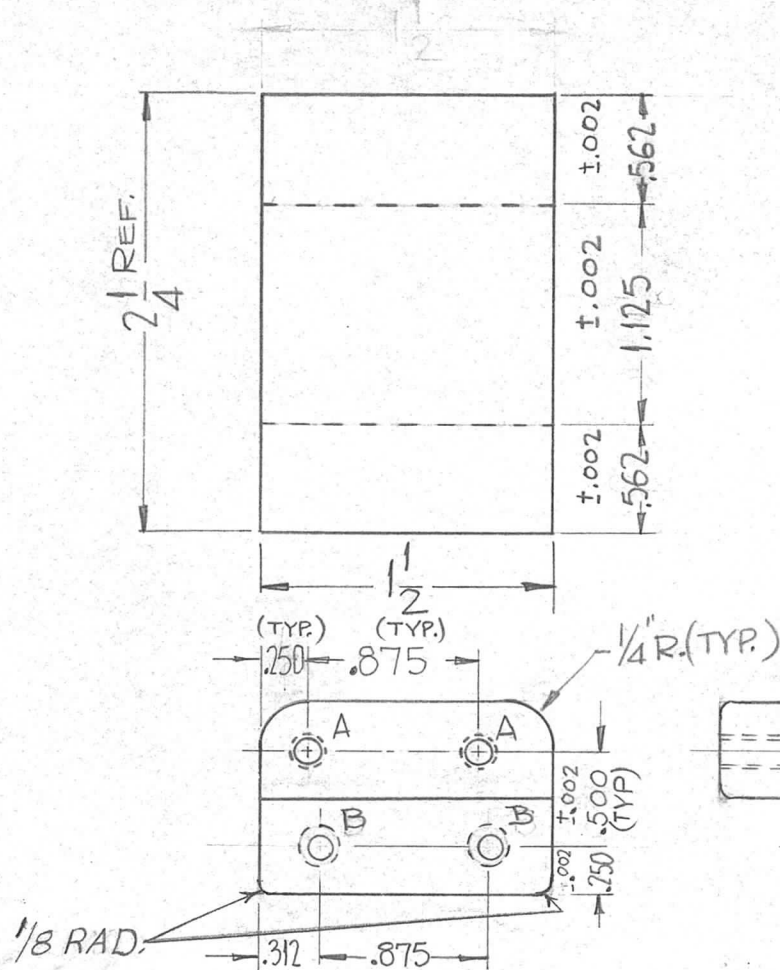
MODEL
GPT-40K()4

USED ON

ASS'Y. NO.
AX-339

DATE
12-23-63

PM-733 C



SYMBOL	DESCRIPTION	REQ.
A	DRILL THRU & TAP 10:32 x 7/8 DP. EACH END.	4
B	DRILL & TAP THRU 10-32	2

NOTE ~
ALL DIM. DIM. APPLY AFTER PLATING.
UNLESS OTHERWISE NOTED
BREAK ALL CORNERS & EDGES.

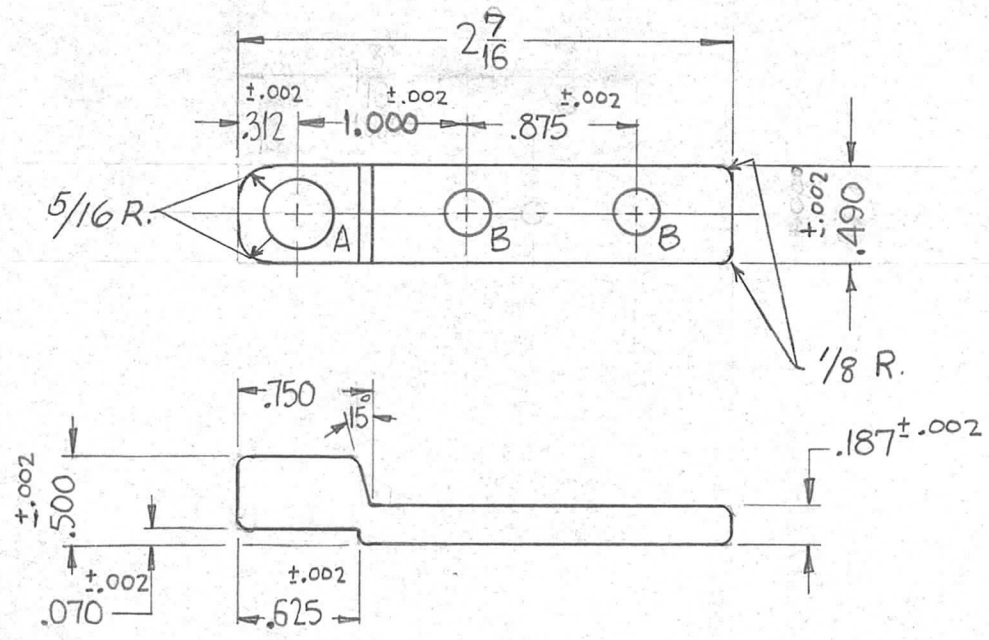
REQ.	ITEM	PART NO.	DESCRIPTION	SYMBOL							
C	HOLE CHART, DESC. FOR "A" HOLE WAS DR. & TAP 10:32 x 7/8 DP.	4.5-65 13805 J.R. JCS 0003	AS NOTED	THE TECHNICAL MATERIEL CORP. MAMARONECK, NEW YORK POST, SUPPORT RETAINER							
B	SEE EMN #10860	2/18/64 10860 A.M. T.R. 02P	STOCK SIZE								
A	DWG UPDATED	12/3/63 10642 J.R. JCS 0003	ALUMINUM								
SYM	DESCRIPTION	DATE	CH. NO.	DRAFTS	CHECKER	ENG. APP.	MATERIAL				
UNLESS OTHERWISE SPECIFIED: DIMENSIONS ARE IN INCHES TOLERANCES ON FRAC. ± 1/64 DEC. ± .005 ANGLES ± 1/2°		SCALE: MAXIMUM ALLOWABLE TOLERANCES HAVE BEEN DETERMINED AND ANY DEVIATIONS WILL BE CAUSE FOR REJECTION. REMOVE ALL BURRS AND SHARP EDGES		6063-T5		TYPE & TEMPER		HEAT TREAT. SPEC.	DRAWN	CHECKED	FINAL APPROVAL
				5245 SILVER RATE		FINISH & SPEC. NO.		ELEC. DES. APP.	MECH. DES. APP.	PM-733	C

THE CONTENTS OF THIS DRAWING ARE THE EXCLUSIVE PROPERTY OF THE TECHNICAL MATERIEL CORP. ITS UNAUTHORIZED USE OR REPRODUCTION IN WHOLE OR IN PART IS STRICTLY FORBIDDEN.

REQ. PER UNIT	USED ON		
	MODEL	ASS'Y. NO.	DATE
10	GPT-40K		12-4-61
14	GPT-40K (4) AS-125	AX-339	12-23-63

PM-735 B

SYMBOL	DESCRIPTION	QUANTITY
A	.380 $\begin{smallmatrix} +.001 \\ -.000 \end{smallmatrix}$ Dia.	1
B	.203 Dia.	2



NOTES - UNLESS OTHERWISE NOTED 1/16 RADIUS ON ALL CORNERS. DIM. APPLY AFTER PLATING.

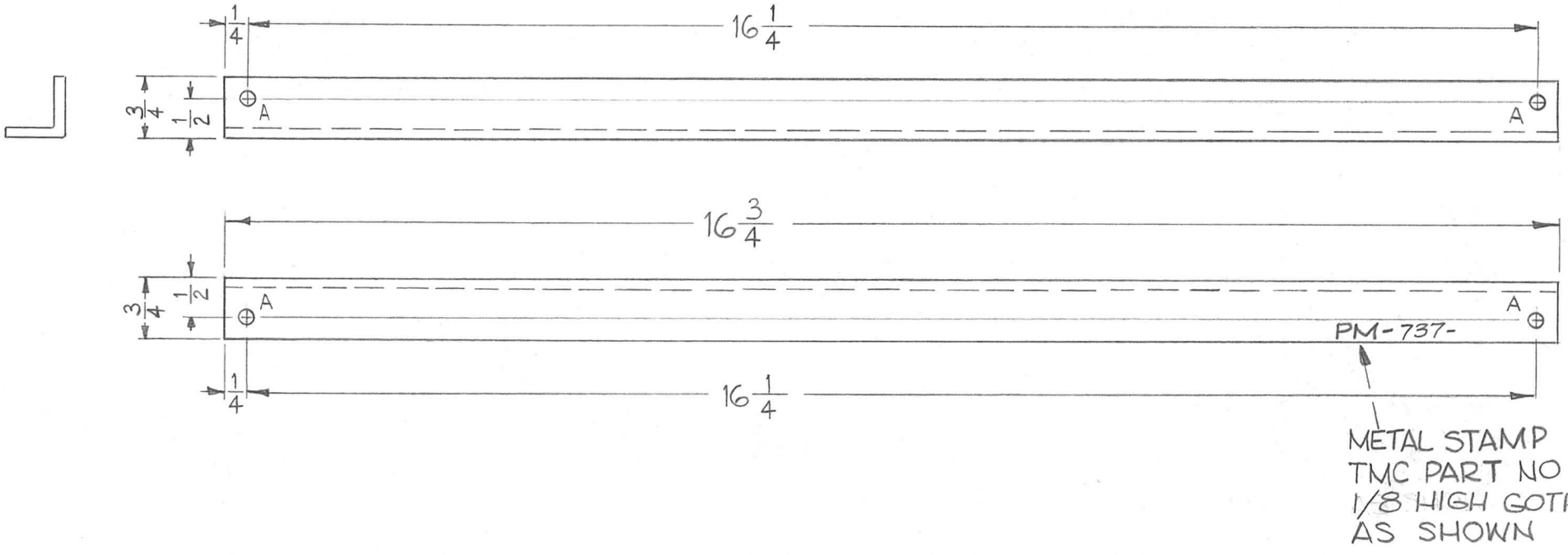
REQ.	ITEM	PART NO.	DESCRIPTION	SYMBOL							
		AS NOTED	THE TECHNICAL MATERIEL CORP.								
		STOCK SIZE	MAMARONECK, NEW YORK								
B	SEE EMN # 10860	2/18/64 10860 A.M. T.R.	BRASS FREE MACHINING	BAR, SUPPORT, CONTACT							
A	DWG UPDATED	12/23/63 10642									
SYM	DESCRIPTION	DATE	CH. NO.	DRAFTS	CHECKER	ENG. APP.	MATERIAL	DRAWN	CHECKED	FINAL APPROVAL	
UNLESS OTHERWISE SPECIFIED: DIMENSIONS ARE IN INCHES TOLERANCES ON FRAC. $\pm 1/64$ DEC. $\pm .005$ ANGLES $\pm 1/2^\circ$		SCALE: MAXIMUM ALLOWABLE TOLERANCES HAVE BEEN DETERMINED AND ANY DEVIATIONS WILL BE CAUSE FOR REJECTION. REMOVE ALL BURRS AND SHARP EDGES					HALF HARD	S 245 SILVER PLATE	DR Man	J De	SM
						FINISH & SPEC. NO.	ELEC. DES. APP.	MECH. DES. APP.	PM-735 B		

THE CONTENTS OF THIS DRAWING ARE THE EXCLUSIVE PROPERTY OF THE TECHNICAL MATERIEL CORP. ITS UNAUTHORIZED USE OR REPRODUCTION IN WHOLE OR IN PART IS STRICTLY FORBIDDEN.

REQ. PER UNIT	USED ON	
	MODEL	ASS'Y. NO.
1	LFA-2	DATE
		12-27-61

PM-737

LEGEND		
HOLE	DESCRIPTION	REQ.
A	11/64 DIA.	4



REQ.	ITEM	PART NO.	DESCRIPTION			SYMBOL
		1/8	THE TECHNICAL MATERIEL CORP.			
		STOCK SIZE	MAMARONECK, NEW YORK			
		3/4 X 3/4 ALUM. ANGLE	BRACKET, ANGLE			
		MATERIAL				
		5052-H32	W.A.F.	RIZZO	SJM	
		TYPE & TEMPER	DRAWN	CHECKED	FINAL APPROVAL	
		S404 YEL. IRIDITE	RET	RET	PM-737	
		FINISH & SPEC. NO.	ELEC. DES. APP.	MECH. DES. APP.		

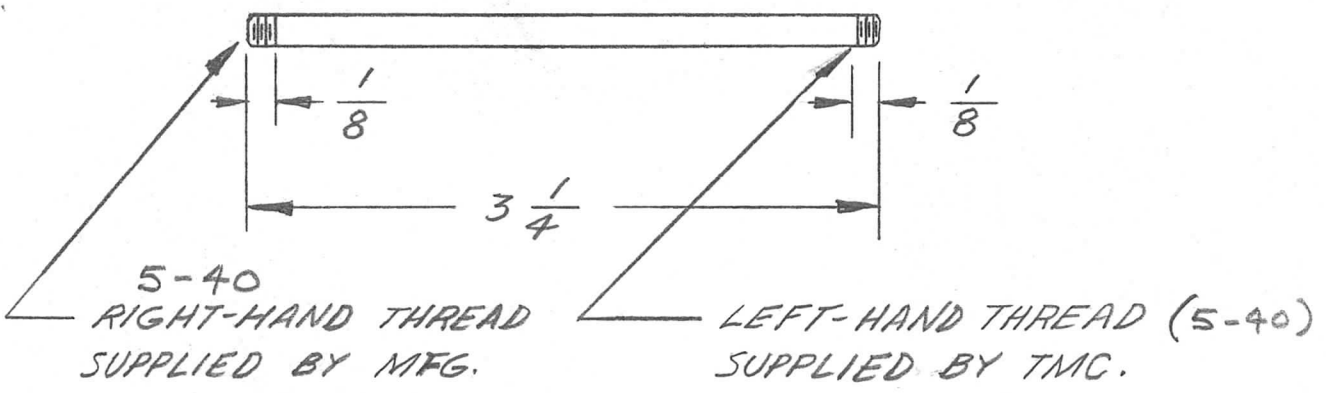
UNLESS OTHERWISE SPECIFIED:
DIMENSIONS ARE IN INCHES.
TOLERANCES ON
FRAC. $\pm 1/64$ DEC. $\pm .005$ ANGLES $\pm 1/2^\circ$

SCALE: HALF (DO NOT SCALE)
MAXIMUM ALLOWABLE TOLERANCES HAVE BEEN DETERMINED AND ANY DEVIATIONS WILL BE CAUSE FOR REJECTION.
REMOVE ALL BURRS AND SHARP EDGES

THE CONTENTS OF THIS DRAWING ARE THE EXCLUSIVE PROPERTY OF THE TECHNICAL MATERIEL CORP. ITS UNAUTHORIZED USE OR REPRODUCTION IN WHOLE OR IN PART IS STRICTLY FORBIDDEN.

REQ. PER UNIT	USED ON		
	MODEL	ASS'Y. NO.	DATE
2	CLL		12-13-61
2	T15-3		12-13-61

PM-738



NOTE:
USE TILT RELEASE EXTENSION ROD SUPPLIED W/ TK-108 AND MODIFY AS SHOWN

REQ.	ITEM	PART NO.	DESCRIPTION			SYMBOL
		$\frac{1}{8}$ ROD	THE TECHNICAL MATERIEL CORP.			
		STOCK SIZE	MAMARONECK, NEW YORK			
		STAINLESS STEEL	EXTENSION, ROD,			
		MATERIAL	TILT LOCK RELEASE			
SYM	DESCRIPTION	DATE	CH. NO.	DRAFTS	CHECKER	ENG. APP.
UNLESS OTHERWISE SPECIFIED: DIMENSIONS ARE IN INCHES TOLERANCES ON FRAC. $\pm 1/64$ DEC. $\pm .005$ ANGLES $\pm 1/2^\circ$		SCALE: MAXIMUM ALLOWABLE TOLERANCES HAVE BEEN DETERMINED AND ANY DEVIATIONS WILL BE CAUSE FOR REJECTION. REMOVE ALL BURRS AND SHARP EDGES				
		TYPE & TEMPER	HEAT TREAT. SPEC.	DRAWN	CHECKED	FINAL APPROVAL
		PASSIVATE		wh	Jhe	EFM
		FINISH & SPEC. NO.	ELEC. DES. APP.	MECH. DES. APP.	PM-738	

THE CONTENTS OF THIS DRAWING ARE THE EXCLUSIVE PROPERTY OF THE TECHNICAL MATERIEL CORP. ITS UNAUTHORIZED USE OR REPRODUCTION IN WHOLE OR IN PART IS STRICTLY FORBIDDEN.

REQ. PER UNIT
2

MODEL
TER-5K-50

USED ON

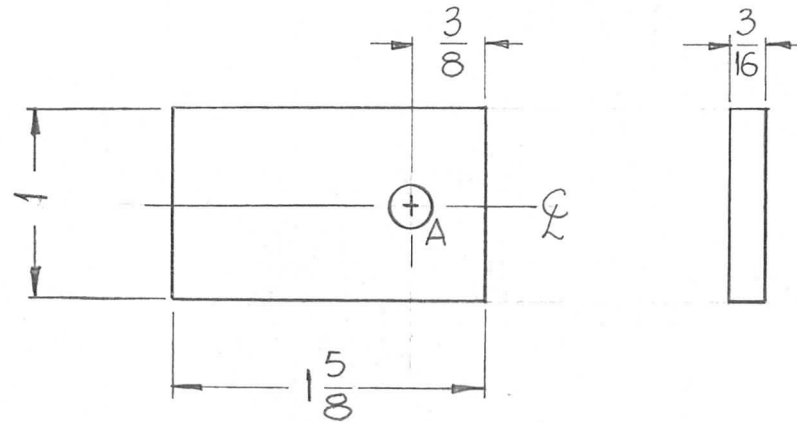
ASS'Y. NO.

DATE

1-30-62

PM-742

SYMBOL	DESCRIPTION	REQ.
A	13/64 DIA.	1



REQ.	ITEM	PART NO.	DESCRIPTION			SYMBOL
		3/16 THK. X 1" WIDE	THE TECHNICAL MATERIEL CORP.			
		STOCK SIZE	MAMARONECK, NEW YORK			
		BRASS	CENTERED PLATE, STRAP			
		MATERIAL				
SYM	DESCRIPTION	DATE	CH. NO.	DRAFTS	CHECKER	ENG. APP.
UNLESS OTHERWISE SPECIFIED:		SCALE: Do Not Scale				
DIMENSIONS ARE IN INCHES		MAXIMUM ALLOWABLE TOLERANCES HAVE BEEN DETERMINED AND ANY DEVIATIONS WILL BE CAUSE FOR REJECTION.				
TOLERANCES ON		REMOVE ALL BURRS AND SHARP EDGES				
FRAC. ± 1/64 DEC. ± .005 ANGLES ± 1/2°		NATURAL		DRAWN		CHECKED
		FINISH & SPEC. NO.		ELEC. DES. APP.		MECH. DES. APP.
				D. J. Mammuzzo		RUZZO
						SAM
						PM-742

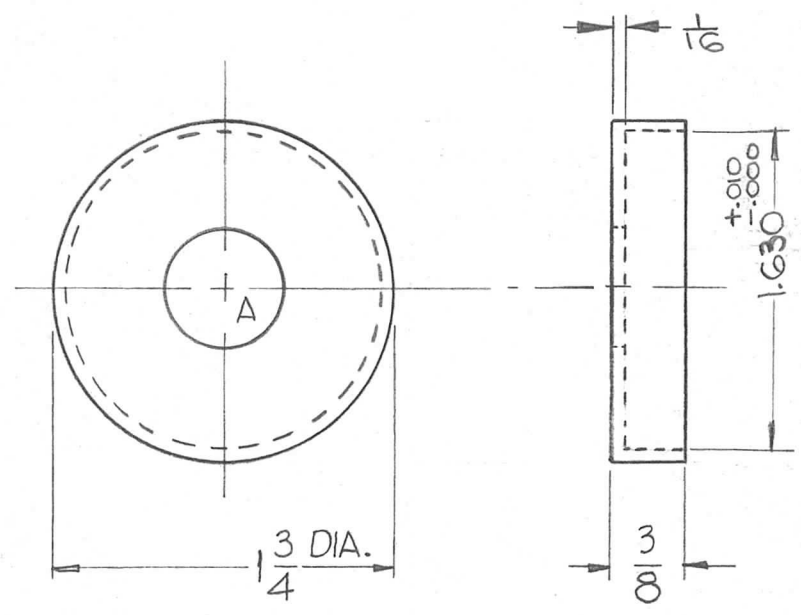
THE CONTENTS OF THIS DRAWING ARE THE EXCLUSIVE PROPERTY OF THE TECHNICAL MATERIEL CORP. ITS UNAUTHORIZED USE OR REPRODUCTION IN WHOLE OR IN PART IS STRICTLY FORBIDDEN.

REQ. PER UNIT	USED ON	
	MODEL	ASS'Y. NO.
2	TER-5K-50	1-27-62

PM-743

A

HOLES	DESCRIPTION	REQ.
A	5/8 DIA.	1



REQ.	ITEM	PART NO.	DESCRIPTION			SYMBOL
			THE TECHNICAL MATERIEL CORP. MAMARONECK, NEW YORK			
			STOCK SIZE			
A			BRASS			CAP, CENTER CONDUCTOR,
			MATERIAL			MACHINING
			FREE MACHINING		D.J. Mamm	RUZZO
			TYPE & TEMPER	HEATTREAT. SPEC.	DRAWN	CHECKED
			NATURAL			
			FINISH & SPEC. NO.	ELEC. DES. APP.	MECH. DES. APP.	PM-743
						A

DIM. 1.630 \pm .010 WAS 1 1/16 \pm 1/64
STOCK SIZE WAS 1/16, 1/16 DIM ADDED

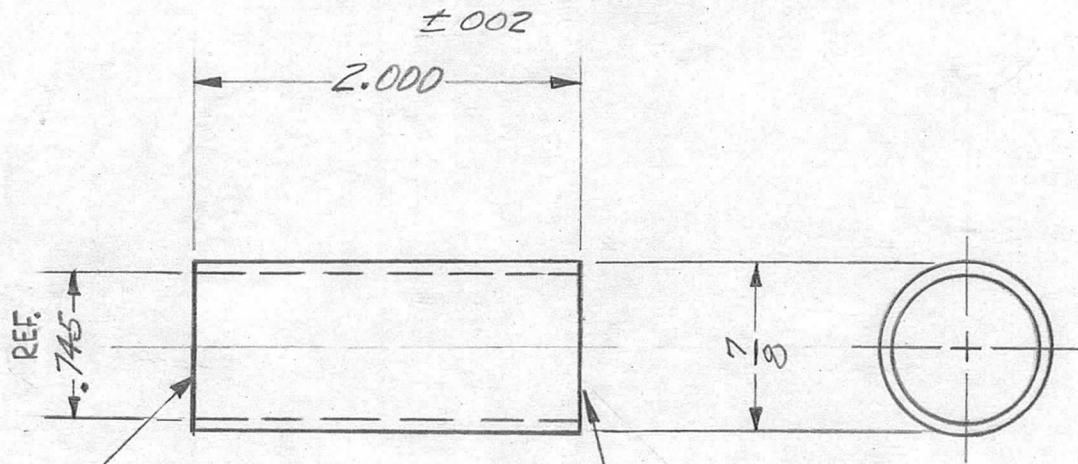
UNLESS OTHERWISE SPECIFIED:
DIMENSIONS ARE IN INCHES
TOLERANCES ON
FRAC. \pm 1/64 DEC. \pm .005 ANGLES \pm 1/2°

SCALE: Do Not Scale

MAXIMUM ALLOWABLE TOLERANCES HAVE BEEN DETERMINED AND ANY DEVIATIONS WILL BE CAUSE FOR REJECTION.
REMOVE ALL BURRS AND SHARP EDGES

A

REQ. PER. UNIT	USED ON			PM-746	A
	MODEL	ASS'Y. NO.	DATE		
4	HCR-1/T	A3042	3/29/61		



SURFACE MUST BE MACHINED SQUARE

SURFACE MUST BE MACHINED SQUARE

PROVIDE WITH ALUMINUM TUBE IN
WHITE METAL POINT

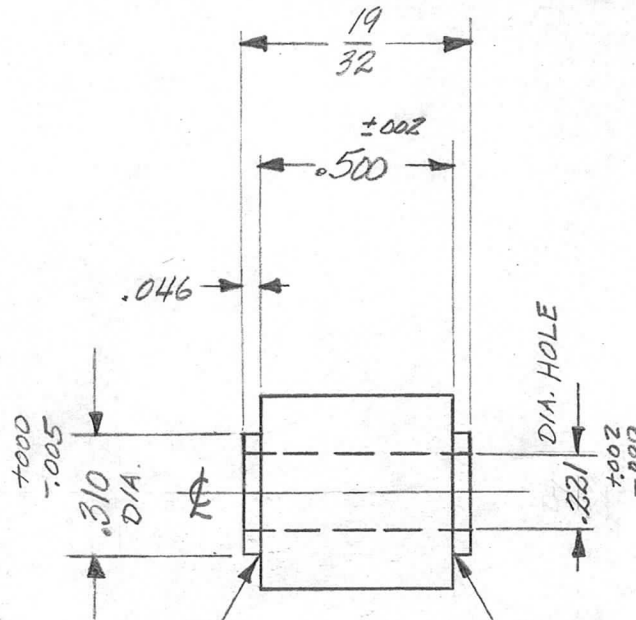
								REQ. ITEM	PART NO.	J. ANGER	DESCRIPTION	SYMBOL	
								7/8 DIA.		THE TECHNICAL MATERIEL CORP.			
								STOCK SIZE		MAMARONECK, NEW YORK			
								ALUMINUM		SPACER, SLEEVE			
								MATERIAL					
A	I	TYPE & TEMPER WAS 3003-H14	6-1-62	TK	VR.R.	J. ANGER	JC	6061-T6		ab	J. ANGER	BP	
ISSUE	ITEM	CHANGED FROM	DATE	CH. NO.	DRAFTS	CHECKER	ENG. APP.	TYPE & TEMPER	HEAT TREAT. SPEC.	DRAWN	CHECKED	FINAL APPROVAL	
TOLERANCES			SCALE:					S404 YEL. IRIDITE		J. ANGER			PM-746
DEC. DIM. ±			MAXIMUM ALLOWABLE TOLERANCES HAVE BEEN DETERMINED AND ANY DEVIATIONS WILL BE CAUSE FOR REJECTION. REMOVE ALL BURRS AND SHARP EDGES					FINISH & SPEC. NO.		ELEC. DES. APP	MECH. DES. APP		A
FRAC. DIM. ±								FINISH & SPEC. NO.		ELEC. DES. APP	MECH. DES. APP		
ANGULAR DIM. ±			FINISH & SPEC. NO.		ELEC. DES. APP	MECH. DES. APP							

NOTICE TO PERSONS RECEIVING THIS DRAWING

THE TECHNICAL MATERIEL CORPORATION claims proprietary right in the material disclosed herein. This drawing is issued in confidence for engineering information only and may not be reproduced or used to manufacture anything shown herein without permission from THE TECHNICAL MATERIEL CORPORATION to the user. This drawing is loaned for mutual assistance and is subject to recall at any time.

Property of:

THE TECHNICAL MATERIEL CORPORATION
MAMARONECK, NEW YORK



CORNERS MUST BE SHARP

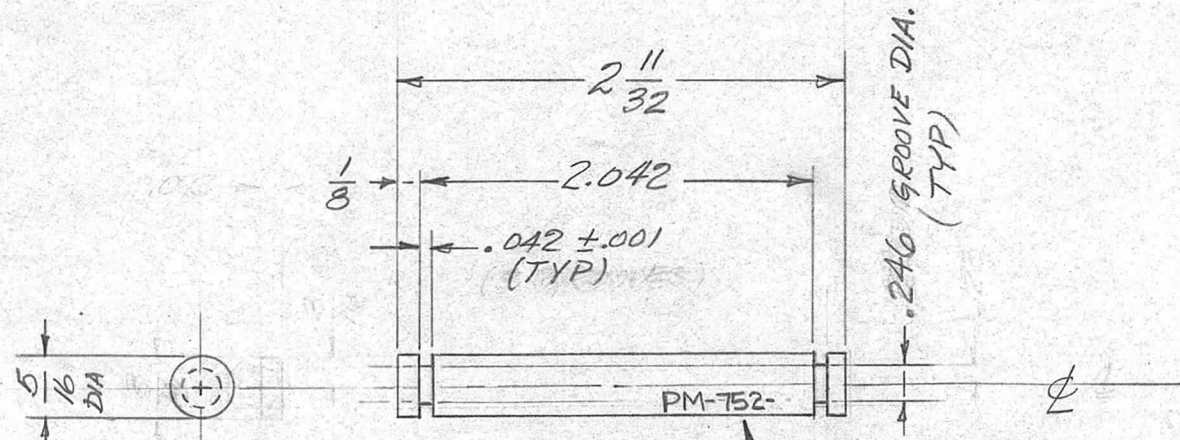
CORNERS MUST BE SHARP

REQ. PER. UNIT	USED ON		
	MODEL	ASS'Y. NO.	DATE
8	HER-1/T	A 3042	5/5/61

PM-747

ISSUE	ITEM	CHANGED FROM	DATE	CH. NO.	DRAFTS	CHECKER	ENG. APP.	REQ. ITEM	PART NO.	DESCRIPTION	SYMBOL	
								1/2 DIA.		THE TECHNICAL MATERIEL CORP.		
								STOCK SIZE		MAMARONECK, NEW YORK		
								LOW SYNTHANE		SPACER, SHOULDER		
								MATERIAL				
TOLERANCES			SCALE: Do Not Scale					911		ab Ang		BP
DEC. DIM. ±			MAXIMUM ALLOWABLE TOLERANCES HAVE BEEN DETERMINED AND ANY DEVIATIONS WILL BE CAUSE FOR REJECTION. REMOVE ALL BURRS AND SHARP EDGES					TYPE & TEMPER	HEAT TREAT. SPEC.	DRAWN	CHECKED	FINAL APPROVAL
FRAC. DIM. ± .010								NATURAL		J. ANGER		PM-747
ANGULAR DIM. ±								FINISH & SPEC. NO.		ELEC. DES. APP MECH. DES. APP		

REQ. PER. UNIT	USED ON			PM-752
	MODEL	ASS'Y. NO.	DATE	
1	HFR-1/T	A-2343	4/14/61	



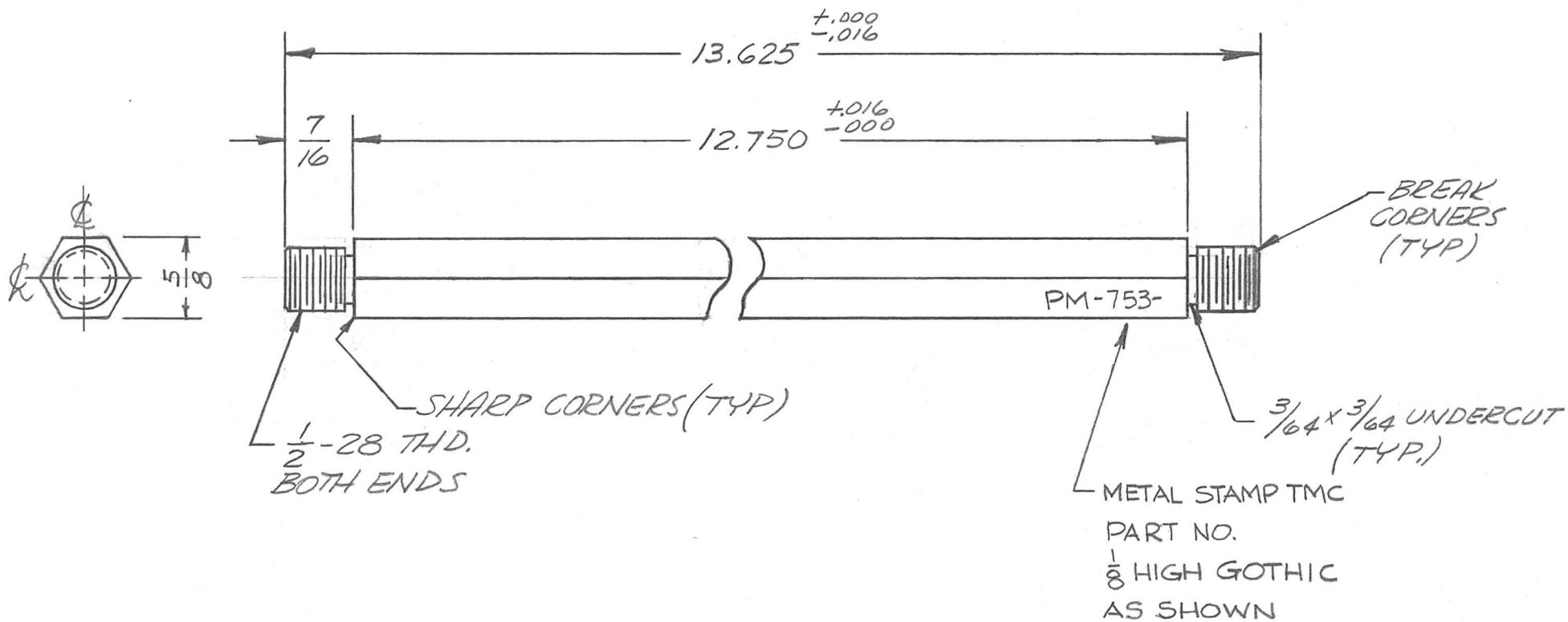
METAL STAMP TMC
PART NO.
1/8 HIGH GOTHIC
AS SHOWN

							REQ. ITEM	PART NO.	DESCRIPTION	SYMBOL				
							5/16 DIA.		THE TECHNICAL MATERIEL CORP. MAMARONECK, NEW YORK SPACER, TIE ROD (SINGLE)					
							STOCK SIZE							
							BRASS							
							MATERIAL							
ISSUE	ITEM	CHANGED FROM	DATE	CH. NO.	DRAFTS	CHECKER	ENG. APP.	1/2 HARD	J.A.	J.A.	BP			
TOLERANCES			SCALE: 1:1				TYPE & TEMPER	HEAT TREAT. SPEC.	DRAWN	CHECKED	FINAL APPROVAL			
DEC. DIM. ± .002			MAXIMUM ALLOWABLE TOLERANCES HAVE BEEN DETERMINED AND ANY DEVIATIONS WILL BE CAUSE FOR REJECTION. REMOVE ALL BURRS AND SHARP EDGES				FINISH & SPEC. NO.		J. ANGER		PM-752			
FRAC. DIM. ± .010							ELEC. DES. APP.		MECH. DES. APP.					
ANGULAR DIM. ±														

THE CONTENTS OF THIS DRAWING ARE THE EXCLUSIVE PROPERTY OF THE TECHNICAL MATERIEL CORP. ITS UNAUTHORIZED USE OR REPRODUCTION IN WHOLE OR IN PART IS STRICTLY FORBIDDEN.

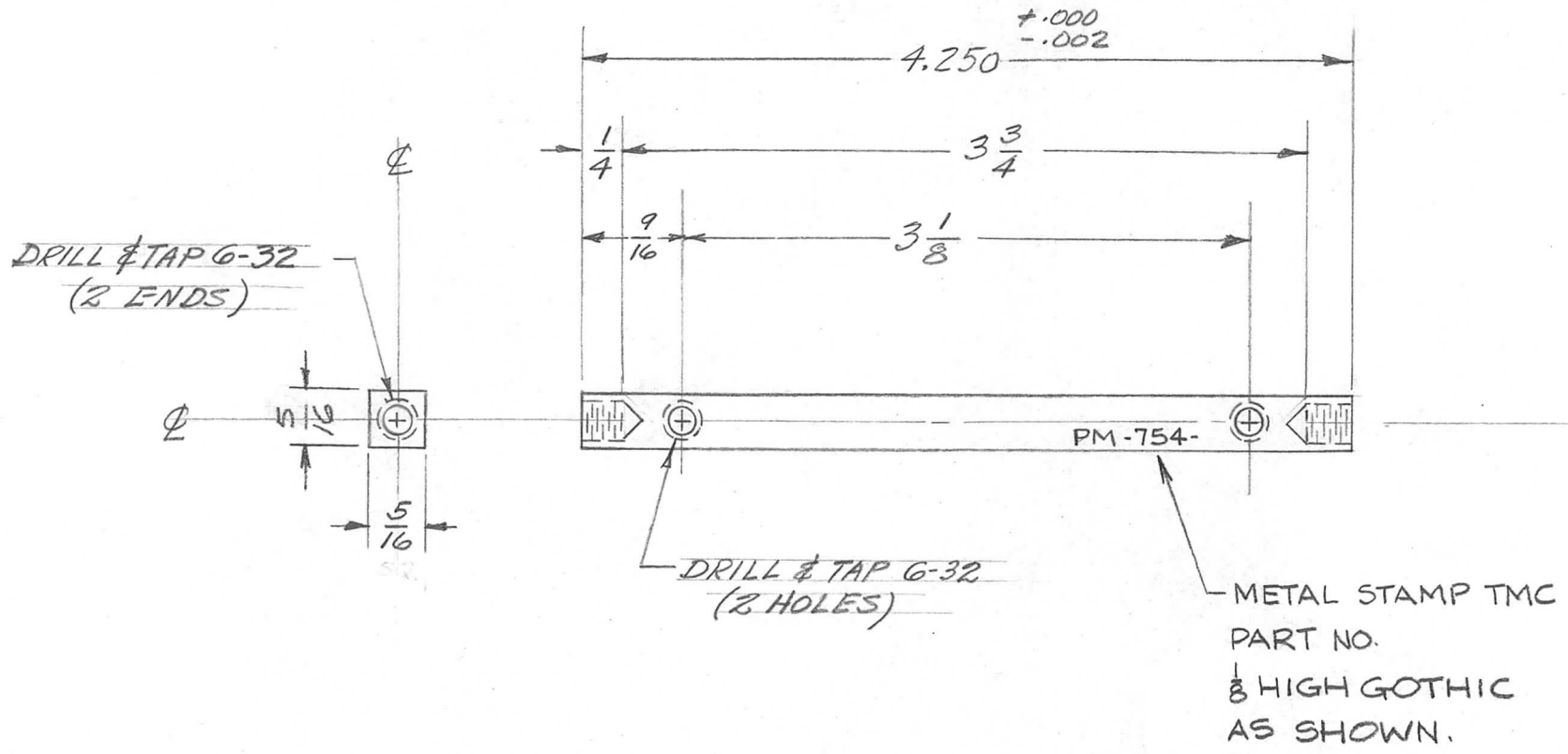
REQ. PER UNIT	USED ON		
	MODEL	ASS'Y. NO.	DATE
1	HER-1/T	A-3042	2-15-62

PM-753



							REQ.	ITEM	PART NO.	J. ANGER	DESCRIPTION	SYMBOL
									5/8 HEX ROD		THE TECHNICAL MATERIEL CORP.	
									STOCK SIZE		MAMARONECK, NEW YORK	
									ALUMINUM		SHAFT, ROTOR	
									MATERIAL			
SYM	DESCRIPTION	DATE	CH. NO.	DRAFTS	CHECKER	ENG. APP.						
UNLESS OTHERWISE SPECIFIED:		SCALE: Do Not Scale		2024-T4						AB		BP
DIMENSIONS ARE IN INCHES		MAXIMUM ALLOWABLE TOLERANCES HAVE BEEN DETERMINED AND ANY DEVIATIONS WILL BE CAUSE FOR REJECTION.		TYPE & TEMPER		HEATTREAT. SPEC.				DRAWN	CHECKED	FINAL APPROVAL
TOLERANCES ON		REMOVE ALL BURRS AND SHARP EDGES		S404-YEL. IRIDITE						J. ANGER		PM-753
FRAC. ± 1/64 DEC. ± .005 ANGLES ± 1/2°				FINISH & SPEC. NO.						ELEC. DES. APP.	MECH. DES. APP.	

REQ. PER. UNIT	USED ON			PM-754
	MODEL	ASS'Y. NO.	DATE	
5	HFR-1/T	A2532	5/18/61	

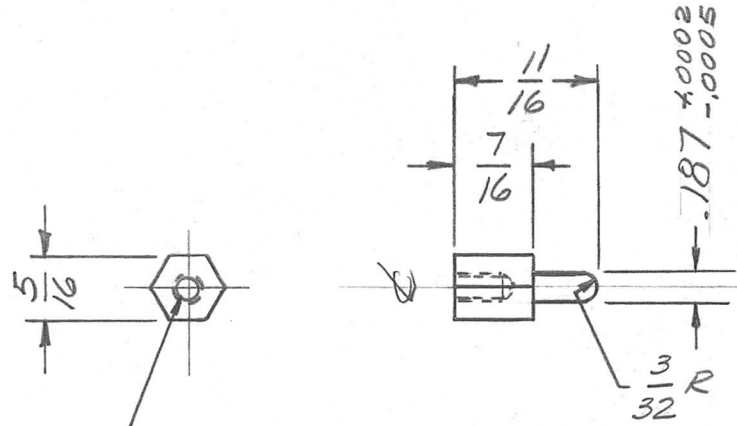


							REQ. ITEM	PART NO.	J. ANGER DESCRIPTION			SYMBOL			
							5/16 x 5/16 BAR		THE TECHNICAL MATERIEL CORP.						
							STOCK SIZE		MAMARONECK, NEW YORK						
							ALUMINUM		SUPPORT, BAR, COVER						
							MATERIAL								
ISSUE	ITEM	CHANGED FROM	DATE	CH. NO.	DRAFTS	CHECKER	ENG. APP.	2024-T4	ab	ab	BP				
TOLERANCES			SCALE: Do Not Scale					TYPE & TEMPER	HEAT TREAT. SPEC.	DRAWN	CHECKED	FINAL APPROVAL			
DEC. DIM. ±			MAXIMUM ALLOWABLE TOLERANCES HAVE BEEN DETERMINED AND ANY DEVIATIONS WILL BE CAUSE FOR REJECTION. REMOVE ALL BURRS AND SHARP EDGES					5404 YEL. IRIDITE	J. ANGER			PM-754			
FRAC. DIM. ±								FINISH & SPEC. NO.		ELEC. DES. APP	MECH. DES. APP				
ANGULAR DIM. ±															

THE CONTENTS OF THIS DRAWING ARE THE EXCLUSIVE PROPERTY OF THE TECHNICAL MATERIEL CORP. ITS UNAUTHORIZED USE OR REPRODUCTION IN WHOLE OR IN PART IS STRICTLY FORBIDDEN.

REQ. PER UNIT	USED ON		
	MODEL	ASS'Y. NO.	DATE
2	HFR-1/T	A-3042	2-15-62

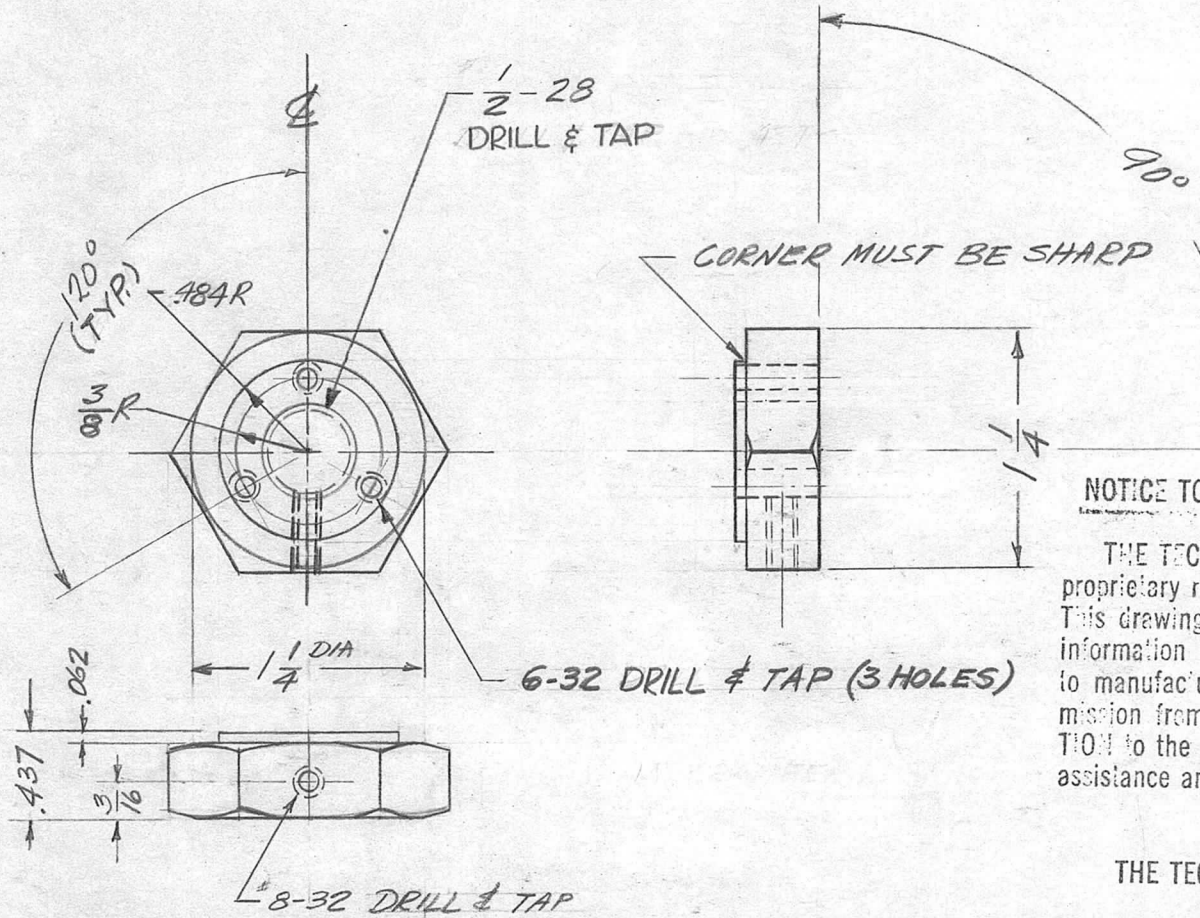
PM-757



DRILL & TAP FOR #8-32 SCREW 1/4" DEEP

REQ.	ITEM	PART NO.	DESCRIPTION		SYMBOL	
		5/16 HEX ROD	THE TECHNICAL MATERIEL CORP.			
		STOCK SIZE	MAMARONECK, NEW YORK			
		STAINLESS STEEL	STUD, HEX			
		MATERIAL				
SYM	DESCRIPTION	DATE	CH. NO.	DRAFTS	CHECKER	ENG. APP.
UNLESS OTHERWISE SPECIFIED: DIMENSIONS ARE IN INCHES TOLERANCES ON FRAC. ± 1/64 DEC. ± .005 ANGLES ± 1/2°		SCALE: MAXIMUM ALLOWABLE TOLERANCES HAVE BEEN DETERMINED AND ANY DEVIATIONS WILL BE CAUSE FOR REJECTION. REMOVE ALL BURRS AND SHARP EDGES				
	#303		OB	AB	BP	
	TYPE & TEMPER	HEATTREAT.SPEC.	DRAWN	CHECKED	FINAL APPROVAL	
	PASSIVATE		J. ANGER		PM-757	
	FINISH & SPEC. NO.		ELEC. DES. APP.	MECH. DES. APP.		

REQ. PER UNIT	USED ON			PM-758
	MODEL	ASS'Y. NO.	DATE	
2	4FR-117	4-3042	4/10/61	



NOTICE TO PERSONS RECEIVING THIS DRAWING

THE TECHNICAL MATERIEL CORPORATION claims proprietary right in the material disclosed herein. This drawing is issued in confidence for engineering information only and may not be reproduced or used to manufacture anything shown hereon without permission from THE TECHNICAL MATERIEL CORPORATION to the user. This drawing is loaned for mutual assistance and is subject to recall at any time.

Property of:
 THE TECHNICAL MATERIEL CORPORATION
 MAMARONECK, NEW YORK

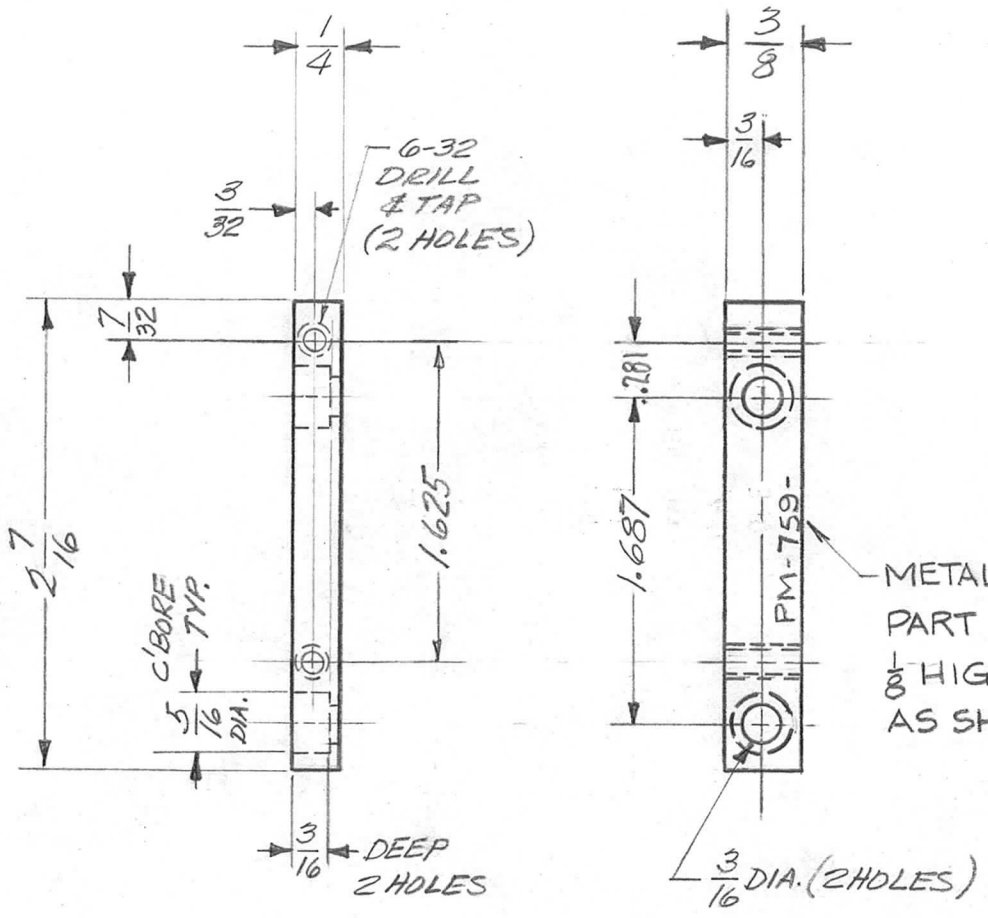
REQ.	ITEM	PART NO.	J. ANGER	DESCRIPTION	SYMBOL								
		1 1/4 HEX ROD		THE TECHNICAL MATERIEL CORP.									
		STOCK SIZE		MAMARONECK, NEW YORK									
		BRASS		NUT, BEARING									
		MATERIAL											
ISSUE	ITEM	CHANGED FROM	DATE	CH. NO.	DRAFTS	CHECKER	ENG. APP.	1/2 HARD	HEAT TREAT. SPEC.	drawn	checked	FINAL APPROVAL	
TOLERANCES			SCALE: Do Not Scale			TYPE & TEMPER		SILVER PLATE .0003		J. ANGER		BP	
DEC. DIM. ± .005			MAXIMUM ALLOWABLE TOLERANCES HAVE BEEN DETERMINED AND ANY DEVIATIONS WILL BE CAUSE FOR REJECTION. REMOVE ALL BURRS AND SHARP EDGES			FINISH & SPEC. NO.				ELEC. DES. APP		MECH. DES. APP	
FRAC. DIM. ± .010						ELEC. DES. APP		MECH. DES. APP		PM-758			
ANGULAR DIM. ± 0.5°													

REQ. PER. UNIT	USED ON			PM-759
	MODEL	ASSY. NO.	DATE	
1	HER-1/T	A-3042	5/26/61	

NOTICE TO PERSONS RECEIVING THIS DRAWING

THE TECHNICAL MATERIEL CORPORATION claims proprietary right in the material disclosed hereon. This drawing is issued in confidence for engineering information only and may not be reproduced or used to manufacture anything shown hereon without permission from THE TECHNICAL MATERIEL CORPORATION to the user. This drawing is loaned for mutual assistance and is subject to recall at any time.

Property of:
 THE TECHNICAL MATERIEL CORPORATION
 MAMARONECK, NEW YORK



METAL STAMP TMC
 PART NO.
 $\frac{1}{8}$ HIGH GOTHIC
 AS SHOWN

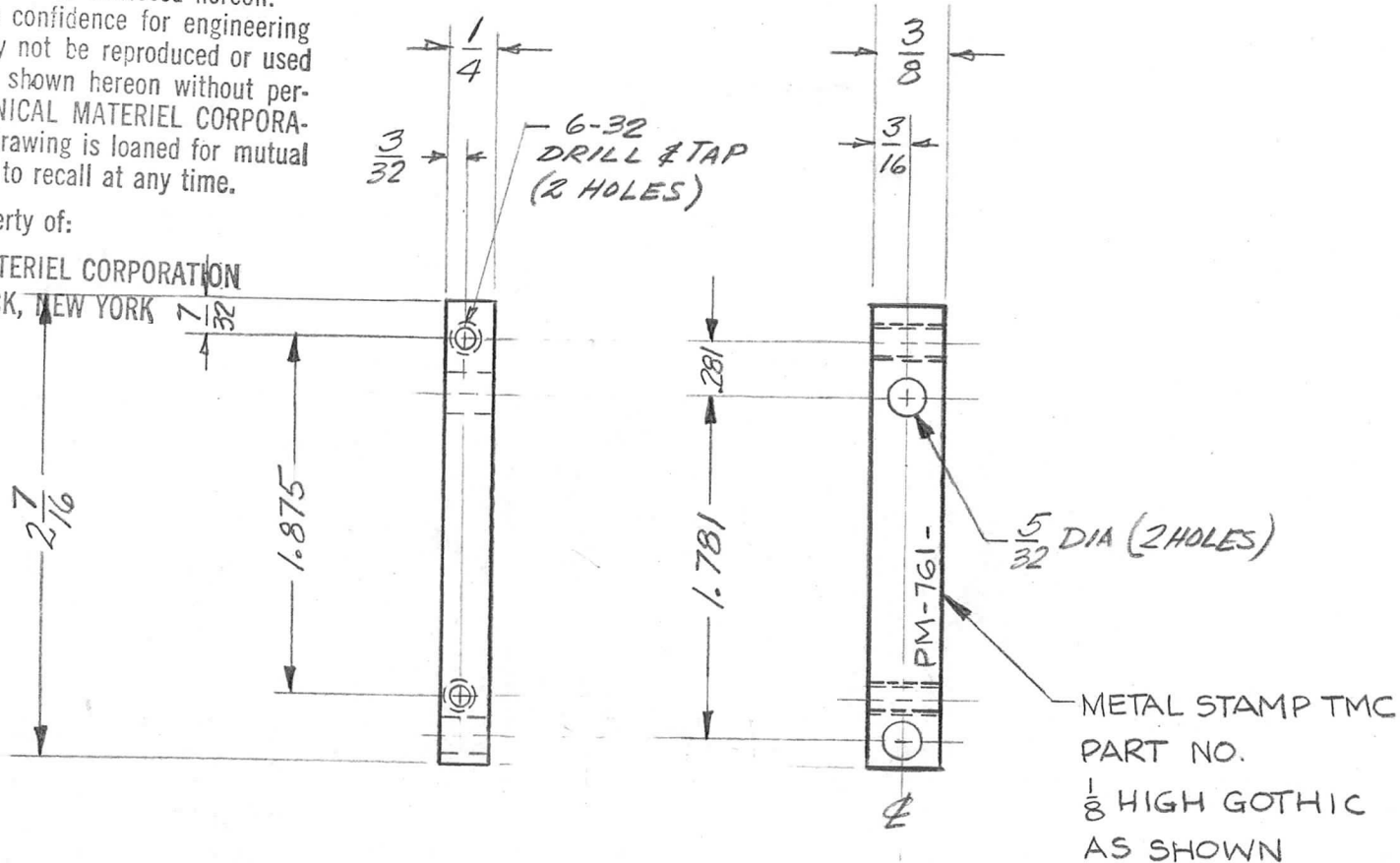
REQ.	ITEM	PART NO.	J. ANGER	DESCRIPTION	SYMBOL							
		$1/4 \times 3/8$ BAR		THE TECHNICAL MATERIEL CORP. MAMARONECK, NEW YORK	BAR NUT, FRONT							
		STOCK SIZE										
		ALUMINUM										
		MATERIAL										
ISSUE	ITEM	CHANGED FROM	DATE	CH. NO.	DRAFTS	CHECKER	ENG. APP.	2024 T4	ab		BP	
TOLERANCES			SCALE: Do Not Scale			2024 T4		ab		BP		
DEC. DIM. $\pm .005$			MAXIMUM ALLOWABLE TOLERANCES HAVE BEEN DETERMINED AND ANY DEVIATIONS WILL BE CAUSE FOR REJECTION. REMOVE ALL BURRS AND SHARP EDGES			TYPE & TEMPER		5404 YEL. IRIDITE	J. ANGER		PM-759	
FRAC. DIM. $\pm .010$						HEAT TREAT. SPEC.						
ANGULAR DIM. \pm						FINISH & SPEC. NO.						
						ELEC. DES. APP		MECH. DES. APP				

NOTICE TO PERSONS RECEIVING THIS DRAWING

THE TECHNICAL MATERIEL CORPORATION claims proprietary right in the material disclosed hereon. This drawing is issued in confidence for engineering information only and may not be reproduced or used to manufacture anything shown hereon without permission from THE TECHNICAL MATERIEL CORPORATION to the user. This drawing is loaned for mutual assistance and is subject to recall at any time.

Property of:

THE TECHNICAL MATERIEL CORPORATION
MAMARONECK, NEW YORK



REQ. PER. UNIT	USED ON			PM-761
	MODEL	ASS'Y. NO.	DATE	
3	HER-1/T	A-3042	4/27/61	

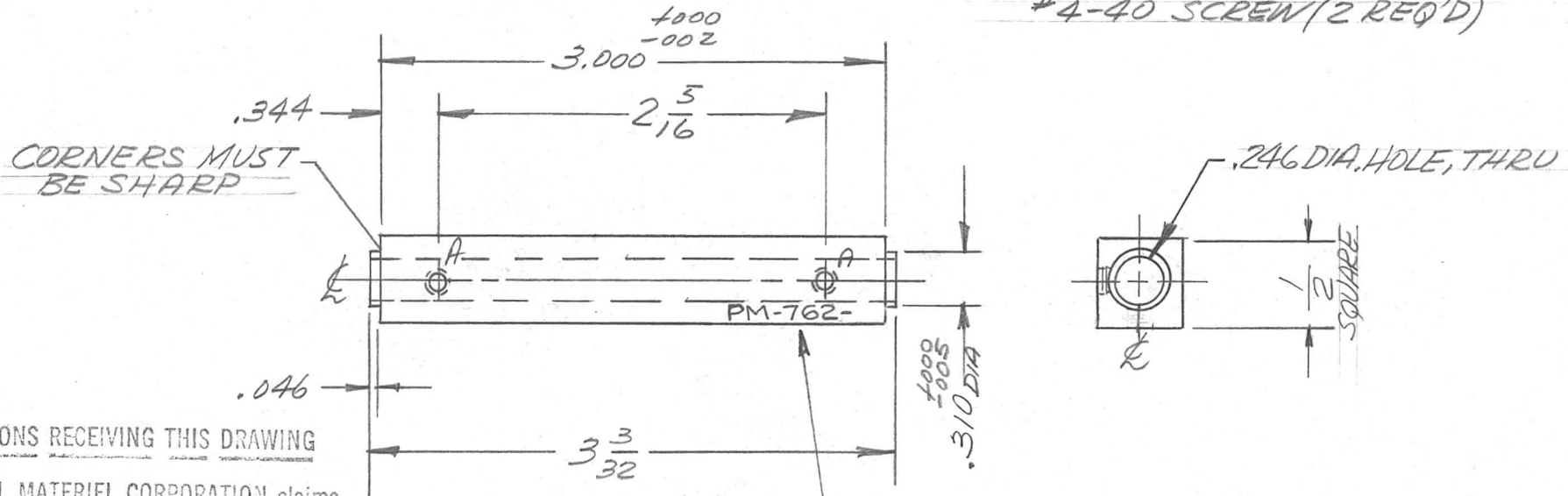
							REQ. ITEM	PART NO.	J. ANGER	DESCRIPTION	SYMBOL				
							1/4 X 3/8 BAR		THE TECHNICAL MATERIEL CORP.						
							STOCK SIZE		MAMARONECK, NEW YORK						
							ALUMINUM		BAR NUT						
							MATERIAL								
ISSUE	ITEM	CHANGED FROM	DATE	CH. NO.	DRAFTS	CHECKER	ENG. APP.	2024-T4	ab	BP	BP				
TOLERANCES			SCALE: Do Not Scale					TYPE & TEMPER	HEAT TREAT. SPEC.	DRAWN	CHECKED	FINAL APPROVAL			
DEC. DIM. ± .005			MAXIMUM ALLOWABLE TOLERANCES HAVE BEEN DETERMINED AND ANY DEVIATIONS WILL BE CAUSE FOR REJECTION. REMOVE ALL BURRS AND SHARP EDGES					5404 YEL. IRIDITE		J. ANGER		PM-761			
FRAC. DIM. ± .010								FINISH & SPEC. NO.		ELEC. DES. APP		MECH. DES. APP			
ANGULAR DIM. ±															

THE CONTENTS OF THIS DRAWING ARE THE EXCLUSIVE PROPERTY OF THE TECHNICAL MATERIEL CORP. ITS UNAUTHORIZED USE OR REPRODUCTION IN WHOLE OR IN PART IS STRICTLY FORBIDDEN.

REQ. PER UNIT	USED ON		
	MODEL	ASS'Y. NO.	DATE
2	HFR-1/T	A-3042	2-16-62

PM-762

HOLES -
A- DRILL & TAP FOR
#4-40 SCREW (2 REQ'D)



NOTICE TO PERSONS RECEIVING THIS DRAWING

THE TECHNICAL MATERIEL CORPORATION claims proprietary right in the material disclosed hereon. This drawing is issued in confidence for engineering information only and may not be reproduced or used to manufacture anything shown hereon without permission from THE TECHNICAL MATERIEL CORPORATION to the user. This drawing is loaned for mutual assistance and is subject to recall at any time.

Property of:

THE TECHNICAL MATERIEL CORPORATION

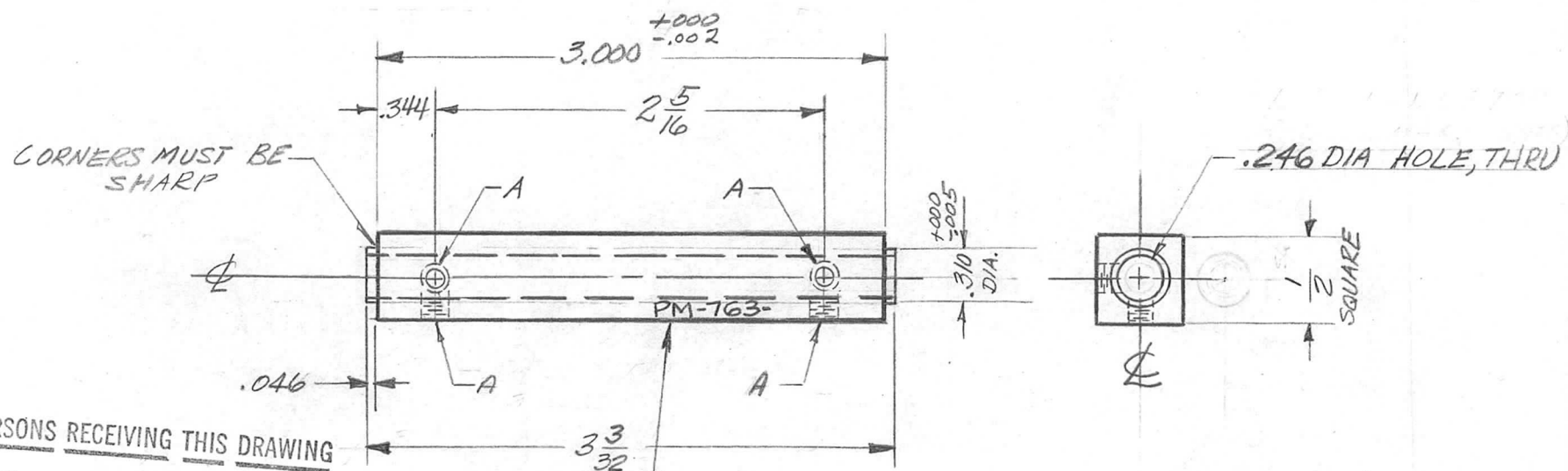
MAMARONECK, NEW YORK

METAL STAMP TMC
PART NO.
1/8 HIGH GOTHIC
AS SHOWN.

REQ.	ITEM	PART NO.	J. ANGER	DESCRIPTION	SYMBOL	
	1/2 x 1/2 BAR			THE TECHNICAL MATERIEL CORP.		
	STOCK SIZE			MAMARONECK, NEW YORK		
	ALUMINUM			SUPPORT, BAR		
	MATERIAL					
SYM	DESCRIPTION	DATE	CH. NO.	DRAFTS	CHECKER	ENG. APP.
	UNLESS OTHERWISE SPECIFIED: DIMENSIONS ARE IN INCHES TOLERANCES ON FRAC. ± 1/64 DEC. ± .005 ANGLES ± 1/2°	SCALE: Do Not Scale		2024-T4	AB	BP
	MAXIMUM ALLOWABLE TOLERANCES HAVE BEEN DETERMINED AND ANY DEVIATIONS WILL BE CAUSE FOR REJECTION. REMOVE ALL BURRS AND SHARP EDGES	TYPE & TEMPER	HEATTREAT. SPEC.	DRAWN	CHECKED	FINAL APPROVAL
		S404-YELIRIDITE		J. ANGER		PM-762
		FINISH & SPEC. NO.		ELEC. DES. APP.	MECH. DES. APP.	

REQ. PER. UNIT	USED ON			PM-763
	MODEL	ASS'Y. NO.	DATE	
2	WFR-1/T	A-3042	5/5/61	

HOLES
A-DRILL & TAP FOR
#4-40 SCREW (4 REQ'D.)



NOTICE TO PERSONS RECEIVING THIS DRAWING

THE TECHNICAL MATERIEL CORPORATION claims proprietary right in the material disclosed hereon. This drawing is issued in confidence for engineering information only and may not be reproduced or used to manufacture anything shown hereon without permission from THE TECHNICAL MATERIEL CORPORATION to the user. This drawing is loaned for mutual assistance and is subject to recall at any time.

METAL STAMP TMC
PART NO.
1/8 HIGH GOTHIC
AS SHOWN

Property of:

THE TECHNICAL MATERIEL CORPORATION

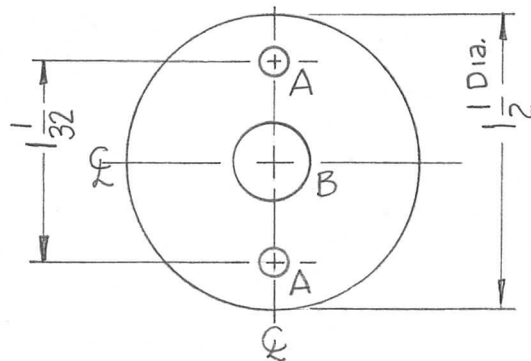
MAMARONECK, NEW YORK

REQ.	ITEM	PART NO.	J. ANGER	DESCRIPTION	SYMBOL									
		1/2 x 1/2 BAR		THE TECHNICAL MATERIEL CORP.										
		STOCK SIZE		MAMARONECK, NEW YORK										
		1/2 ALUMINUM		SUPPORT, BAR										
		MATERIAL												
ISSUE	ITEM	CHANGED FROM	DATE	CH. NO.	DRAFTS	CHECKER	ENG. APP.	2024-74	ab	BP				
TOLERANCES			SCALE: Do Not Scale			TYPE & TEMPER		HEAT TREAT. SPEC.		DRAWN	CHECKED	FINAL APPROVAL		
DEC. DIM. ± .005			MAXIMUM ALLOWABLE TOLERANCES HAVE BEEN DETERMINED AND ANY DEVIATIONS WILL BE CAUSE FOR REJECTION. REMOVE ALL BURRS AND SHARP EDGES			S404 YEL. IRIDITE				J. ANGER		PM-763		
FRAC. DIM. ± .010						FINISH & SPEC. NO.		ELEC. DES. APP		MECH. DES. APP				
ANGULAR DIM. ±														

THE CONTENTS OF THIS DRAWING ARE THE EXCLUSIVE PROPERTY OF THE TECHNICAL MATERIEL CORP. ITS UNAUTHORIZED USE OR REPRODUCTION IN WHOLE OR IN PART IS STRICTLY FORBIDDEN.

REQ. PER UNIT	USED ON			PM-764	Ø
	MODEL	ASS'Y. NO.	DATE		
1	HNF-1		3-16-62		

HOLES	DESCRIPTION	REQ
A	1/8 DIA.	2
B	3/8 DIA.	1



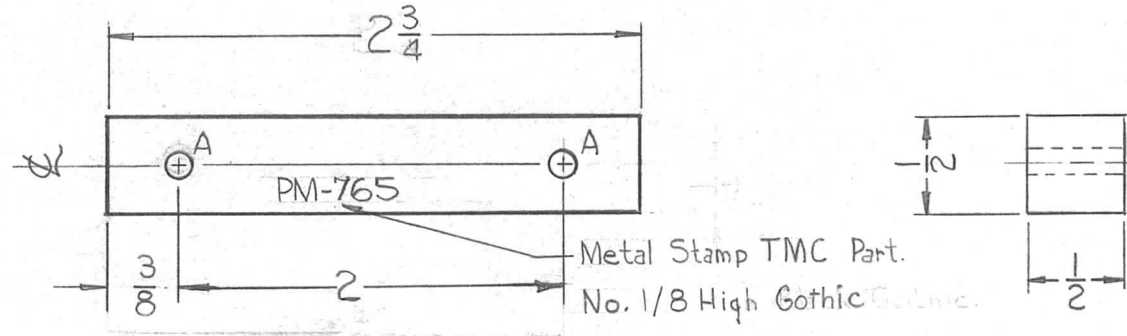
REQ.	ITEM	PART NO.	DESCRIPTION	SYMBOL								
		.040	THE TECHNICAL MATERIEL CORP. MAMARONECK, NEW YORK									
		STOCK SIZE										
Ø		BRASS	SHIELD, ROTARY, SWITCH									
SYM	DESCRIPTION	DATE	CH. NO.	DRAFTS	CHECKER	ENG. APP.	MATERIAL					
	UNLESS OTHERWISE SPECIFIED:						HALF HARD					
	DIMENSIONS ARE IN INCHES	SCALE: 5/16					TYPE & TEMPER	HEATTREAT. SPEC.	DRAWN	CHECKED	FINAL APPROVAL	
	TOLERANCES ON						S135 NICKEL PLATE					
	FRAC. ± 1/64 DEC. ± .005 ANGLES ± 1/2°						FINISH & SPEC. NO.		ELEC. DES. APP.	MECH. DES. APP.	PM-764	Ø

THE CONTENTS OF THIS DRAWING ARE THE EXCLUSIVE PROPERTY OF THE TECHNICAL MATERIEL CORP. ITS UNAUTHORIZED USE OR REPRODUCTION IN WHOLE OR IN PART IS STRICTLY FORBIDDEN.

REQ. PER UNIT	USED ON		
	MODEL	ASS'Y. NO.	DATE
1	HNF-1		7-26-62

PM-765

LEGEND		
HOLE	DESCRIPTION	REQ.
A	.141 DIA (#28 DRILL)	2



NOTICE TO PERSONS RECEIVING THIS DRAWING

THE TECHNICAL MATERIEL CORPORATION claims proprietary right in the material disclosed hereon. This drawing is issued in confidence for engineering information only and may not be reproduced or used to manufacture anything shown hereon without permission from THE TECHNICAL MATERIEL CORPORATION to the user. This drawing is loaned for mutual assistance and is subject to recall at any time.

Property of:
THE TECHNICAL MATERIEL CORPORATION
MAMARONECK, NEW YORK

REQ.	ITEM	PART NO.	GELLMAN	DESCRIPTION	SYMBOL		
		1/2 x 1/2 BAR		THE TECHNICAL MATERIEL CORP.			
		STOCK SIZE		MAMARONECK, NEW YORK			
		ALUMINUM		SPACER, BAR (HNF-1)			
		MATERIAL					
SYM	DESCRIPTION	DATE	CH. NO.	DRAFTS	CHECKER	ENG. APP.	
	UNLESS OTHERWISE SPECIFIED: DIMENSIONS ARE IN INCHES TOLERANCES ON FRAC. ± 1/64 DEC. ± .005 ANGLES ± 1/2°	SCALE:					
		MAXIMUM ALLOWABLE TOLERANCES HAVE BEEN DETERMINED AND ANY DEVIATIONS WILL BE CAUSE FOR REJECTION. REMOVE ALL BURRS AND SHARP EDGES	2024-T3		GG	HQ	BP
			TYPE & TEMPER	HEAT TREAT. SPEC.	DRAWN	CHECKED	FINAL APPROVAL
			S404 YELLOW IRIDITE				PM-765
			FINISH & SPEC. NO.	ELEC. DES. APP.	MECH. DES. APP.		

THE CONTENTS OF THIS DRAWING ARE THE EXCLUSIVE PROPERTY OF THE TECHNICAL MATERIEL CORP. ITS UNAUTHORIZED USE OR REPRODUCTION IN WHOLE OR IN PART IS STRICTLY FORBIDDEN.

REQ. PER UNIT

USED ON

MODEL
HFR-1/T

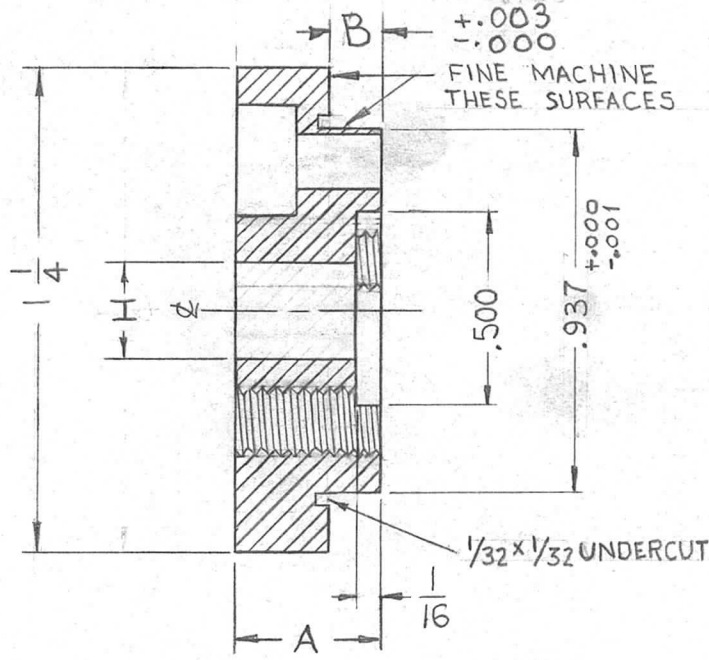
ASS'Y. NO.
A-3042

DATE
7-5-62

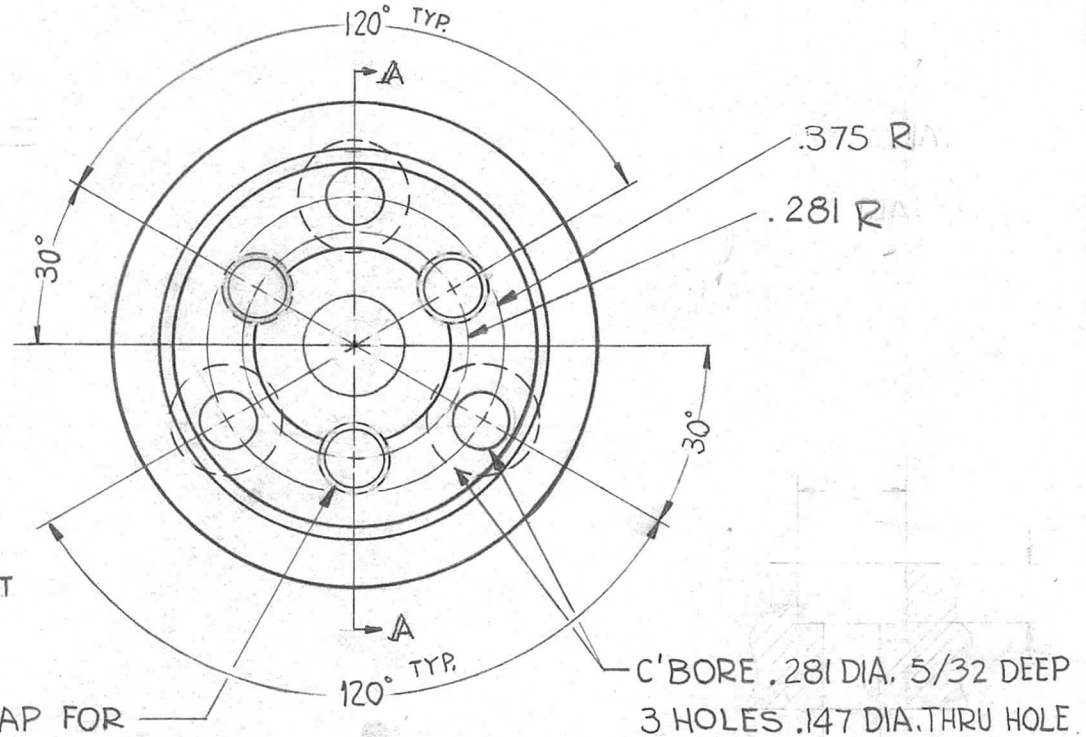
PM-767

C

TMC PART NO	A	B	REQ	H
PM-767-1	.453	.130	1	.2500 ^{+0.0003} _{-0.0000}
PM-767-2	.437	.187	1	NONE REQ
PM-767-3	.375	.130	1	.2500 ^{+0.0005} _{-0.0000}



SECTION A-A



DRILL & TAP FOR
8-32 SCREW - 3 HOLES

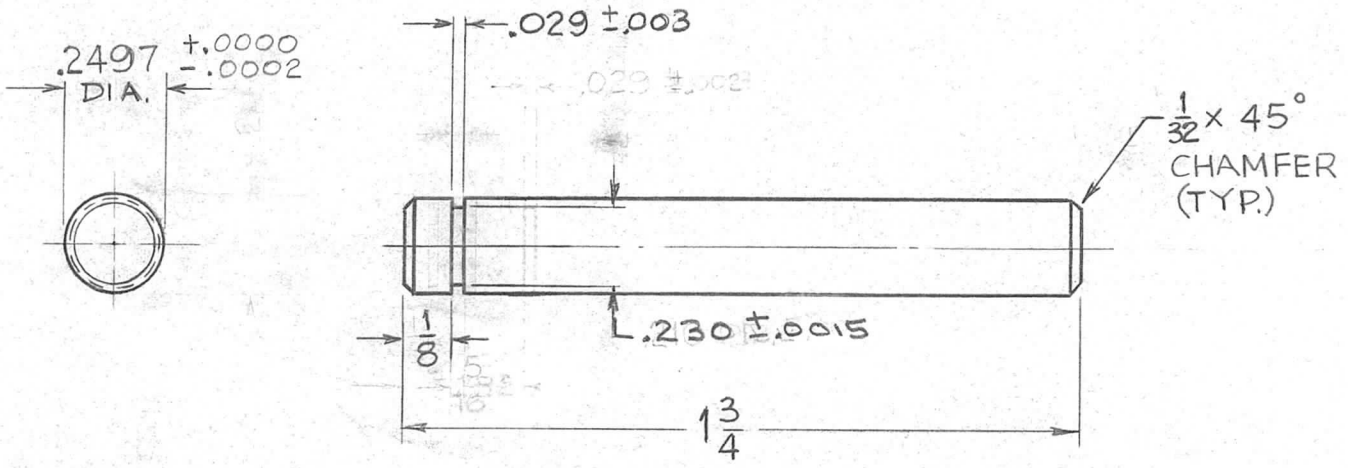
STANDARD DRAWING

REQ.	ITEM	PART NO.	DESCRIPTION			SYMBOL
C	PM767-3 ADD; STD. DWG, STAMP AD	2-11-65 13442	THE TECHNICAL MATERIEL CORP. MAMARONECK, NEW YORK			
B	ON PICT. "H" HOLE ADD. NOTES: FINE MACHINE... & ... UNDERCUT ADD.	10-22-64 12744	HUB, BAND SWITCH GEAR			
A	ON CHART, PM-767-1 DIM "A" WAS .375	11-8-62 7639				
SYM	DESCRIPTION	DATE	CH. NO.	DRAFTS	CHECKER	ENG. APP.
UNLESS OTHERWISE SPECIFIED: DIMENSIONS ARE IN INCHES TOLERANCES ON FRAC. ± 1/64 DEC. ± .005 ANGLES ± 1/2°		SCALE: Do Not Scale				
MAXIMUM ALLOWABLE TOLERANCES HAVE BEEN DETERMINED AND ANY DEVIATIONS WILL BE CAUSE FOR REJECTION. REMOVE ALL BURRS AND SHARP EDGES						
		#303	DRAWN		CHECKED	FINAL APPROVAL
		S104 PASSIVATE	J. ANGER			PM-767 C
		FINISH & SPEC. NO.	ELEC. DES. APP.		MECH. DES. APP.	

THE CONTENTS OF THIS DRAWING ARE THE EXCLUSIVE PROPERTY OF THE TECHNICAL MATERIEL CORP. ITS UNAUTHORIZED USE OR REPRODUCTION IN WHOLE OR IN PART IS STRICTLY FORBIDDEN.

REQ. PER UNIT 2	USED ON	
	MODEL GPR-92	ASS'Y. NO.
	DATE 7-5-62	

PM-768 A



NOTE:-

SHAFT SHALL NOT DEVIATE FROM STRAIGHTNESS MORE THAN .005 PER FOOT.

							REQ. ITEM	PART NO.	GELLMAN	DESCRIPTION	SYMBOL	
									THE TECHNICAL MATERIEL CORP. MAMARONECK, NEW YORK			
									SHAFT, STRAIGHT			
A	DELETED .029 GROOVE LOC. .1985 FROM REMAINING GROOVE	4-30-63	8824									
SYM	DESCRIPTION	DATE	CH. NO.	DRAFTS	CHECKER	ENG. APP.						
UNLESS OTHERWISE SPECIFIED: DIMENSIONS ARE IN INCHES		SCALE: DO NOT SCALE						# 303		V.R.R		
TOLERANCES ON FRAC. ± 1/64 DEC. ± .005 ANGLES ± 1/2°		MAXIMUM ALLOWABLE TOLERANCES HAVE BEEN DETERMINED AND ANY DEVIATIONS WILL BE CAUSE FOR REJECTION. REMOVE ALL BURRS AND SHARP EDGES						PASSIVATE S104				
							FINISH & SPEC. NO.		ELEC. DES. APP.	MECH. DES. APP.	PM-768 A	

THE CONTENTS OF THIS DRAWING ARE THE EXCLUSIVE PROPERTY OF THE TECHNICAL MATERIEL CORP. ITS UNAUTHORIZED USE OR REPRODUCTION IN WHOLE OR IN PART IS STRICTLY FORBIDDEN.

REQ. PER UNIT
2

MODEL
GPR-92

USED ON

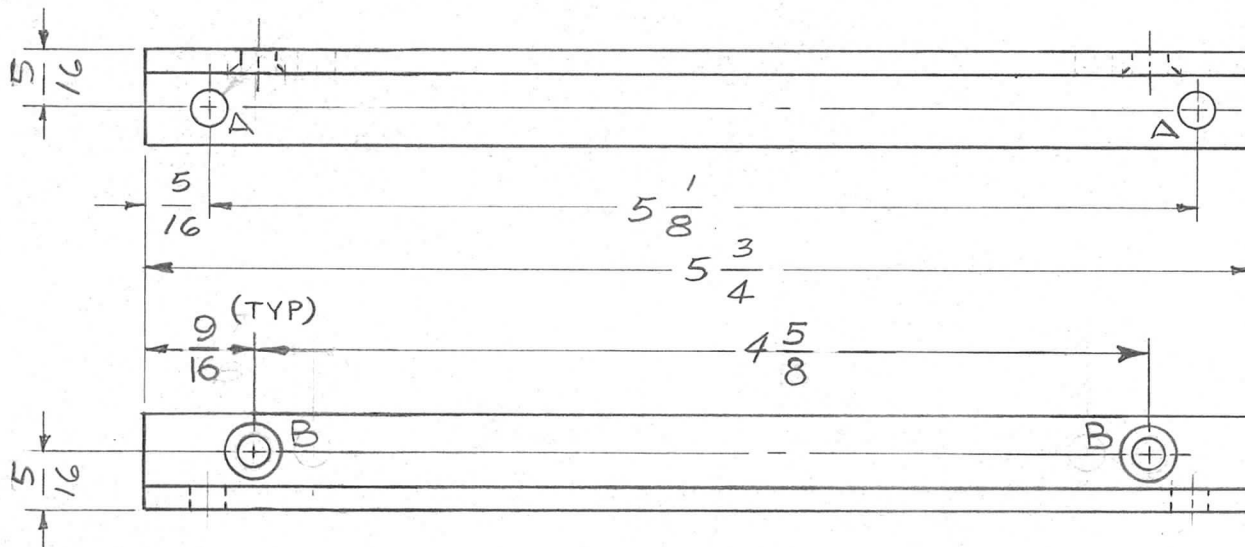
ASS'Y. NO.

DATE

10-16-62

PM-769

A



HOLE LEGEND

- A - 3/16 DIA. - 2 REQ
- B - 5/32 DIA., CSK 82° x .279 DIA. - 2 REQ

REQ.	ITEM	PART NO.	DESCRIPTION			SYMBOL
			GELLMAN			
		1/8 x 1/2 x 1/2	THE TECHNICAL MATERIEL CORP.			
		STOCK SIZE	MAMARONECK, NEW YORK			
		EXTRUDED ALUMINUM	SUPPORT, ANGLE			
		MATERIAL				
		6063-T5	W. S.			
		TYPE & TEMPER	DRAWN	CHECKED	FINAL APPROVAL	
		HEAT TREAT. SPEC.				
		5404-YEL. IRIDITE			PM-769 A	
		FINISH & SPEC. NO.	ELEC. DES. APP.	MECH. DES. APP.		

SYM	DESCRIPTION	DATE	CH. NO.	DRAFTS	CHECKER	ENG. APP.
A	ALL HOLES WERE 3/16 DIA	6-14-63	9286			

UNLESS OTHERWISE SPECIFIED:
DIMENSIONS ARE IN INCHES
TOLERANCES ON
FRAC. ± 1/64 DEC. ± .005 ANGLES ± 1/2°

SCALE: 1:1

MAXIMUM ALLOWABLE TOLERANCES HAVE BEEN DETERMINED AND ANY DEVIATIONS WILL BE CAUSE FOR REJECTION.
REMOVE ALL BURRS AND SHARP EDGES

THE CONTENTS OF THIS DRAWING ARE THE EXCLUSIVE PROPERTY OF THE TECHNICAL MATERIEL CORP. ITS UNAUTHORIZED USE OR REPRODUCTION IN WHOLE OR IN PART IS STRICTLY FORBIDDEN.

REQ. PER UNIT

1

HFR-1

USED ON

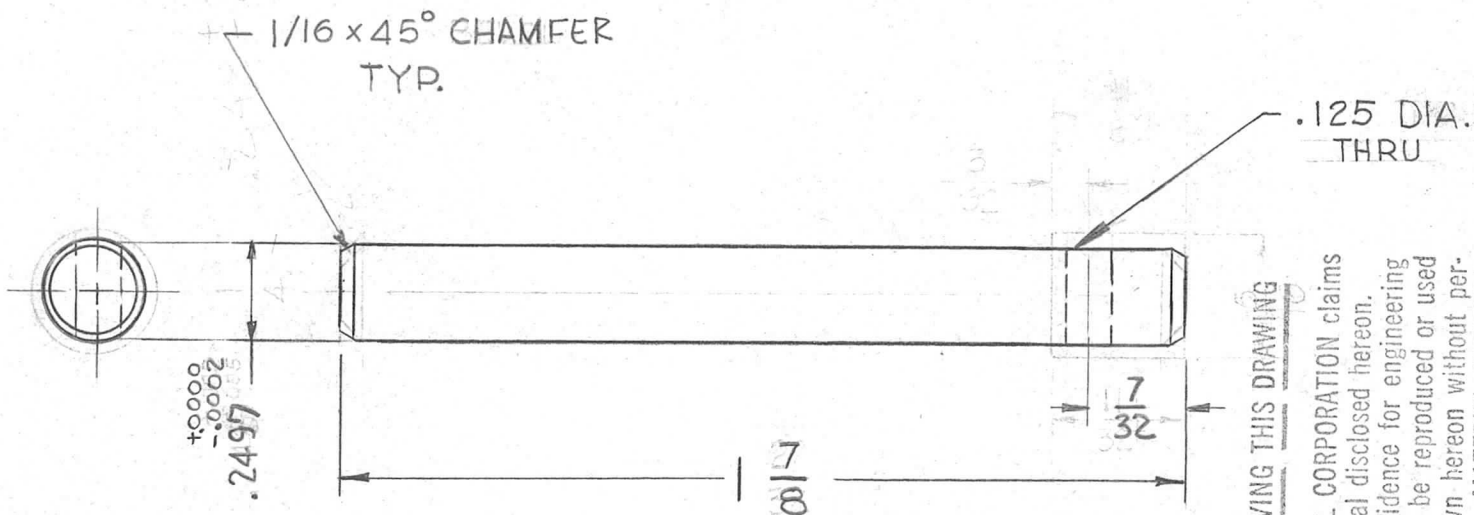
MODEL

ASSY. NO.

DATE

7-26-62

PM-774



NOTE -

ALL SHAFTS SHALL NOT DEVIATE FROM STRAIGHTNESS MORE THAN .005 PER FOOT.

REF: GR-181

NOTICE TO PERSONS RECEIVING THIS DRAWING

THE TECHNICAL MATERIEL CORPORATION claims proprietary right in the material disclosed hereon. This drawing is issued in confidence for engineering information only and may not be reproduced or used to manufacture anything shown hereon without permission from THE TECHNICAL MATERIEL CORPORATION to the user. This drawing is loaned for mutual assistance and is subject to recall at any time.

Property of:

THE TECHNICAL MATERIEL CORPORATION
MAMARONECK, NEW YORK

REQ.	ITEM	PART NO.	DESCRIPTION				SYMBOL
		KRUY	THE TECHNICAL MATERIEL CORP.				
			MAMARONECK, NEW YORK				
		STAINLESS STEEL	SHAFT, GEAR MTG.				
SYM	DESCRIPTION	DATE	CH. NO.	DRAFTS	CHECKER	ENG. APP.	
UNLESS OTHERWISE SPECIFIED: DIMENSIONS ARE IN INCHES.		SCALE: DO NOT SCALE					
TOLERANCES ON FRAC. ± 1/64 DEC. ± .005 ANGLES ± 1/2°		MAXIMUM ALLOWABLE TOLERANCES HAVE BEEN DETERMINED AND ANY DEVIATIONS WILL BE CAUSE FOR REJECTION. REMOVE ALL BURRS AND SHARP EDGES					
	#303					G.D.L.	
	S104 PASSIVATE					JAK	PM-774
	FINISH & SPEC. NO.					ELEC. DES. APP.	MECH. DES. APP.

THE CONTENTS OF THIS DRAWING ARE THE EXCLUSIVE PROPERTY OF THE TECHNICAL MATERIEL CORP. ITS UNAUTHORIZED USE OR REPRODUCTION IN WHOLE OR IN PART IS STRICTLY FORBIDDEN.

REQ. PER UNIT

1

MODEL

HFR-1

USED ON

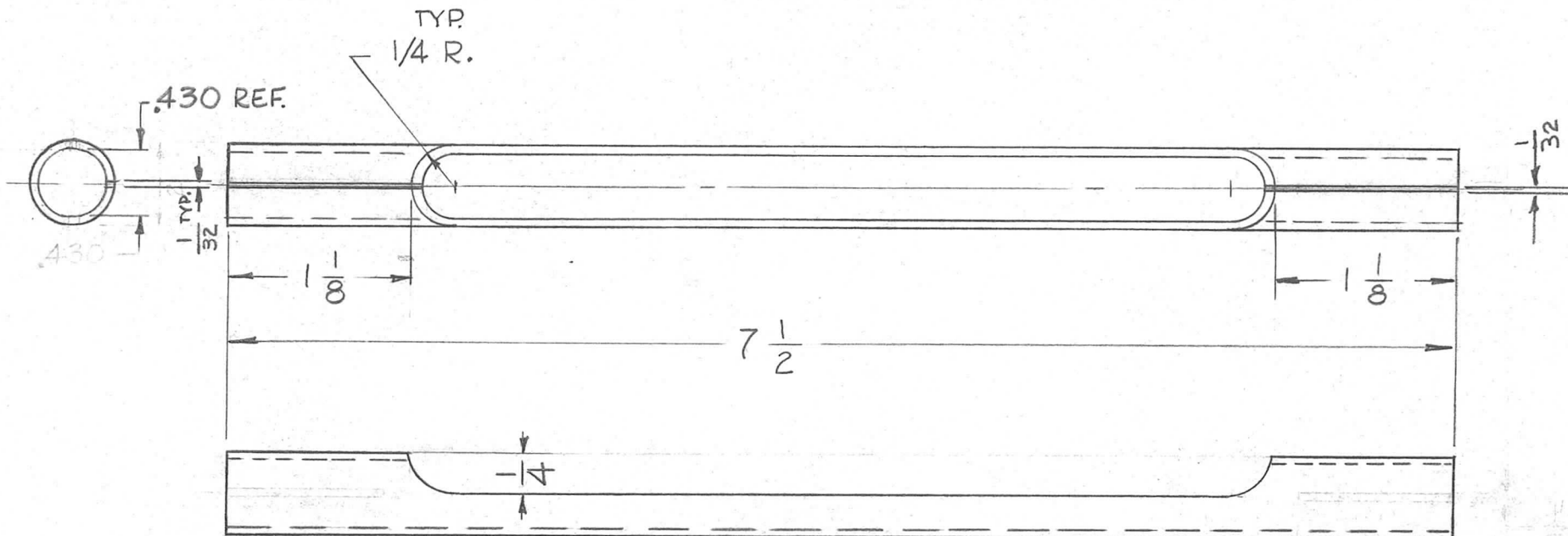
ASS'Y. NO.

DATE

7-26-62

PM-775

A



REQ.	ITEM	PART NO.	DESCRIPTION			SYMBOL
			KROY			
			.037 THK.			
			STOCK SIZE			
			ALUMINUM PIPE			
			MATERIAL			
			5052-H32			
			TYPE & TEMPER HEAT TREAT. SPEC.			
			S404 YEL. IRIDITE			
			FINISH & SPEC. NO.			
			G.D.L.			
			DRAWN			
			CHECKED			
			FINAL APPROVAL			
			TAK.			
			PM-775			
			A			

UNLESS OTHERWISE SPECIFIED:
DIMENSIONS ARE IN INCHES
TOLERANCES ON
FRAC. ± 1/64 DEC. ± .005 ANGLES ± 1/2°

SCALE: DO NOT SCALE
MAXIMUM ALLOWABLE TOLERANCES HAVE BEEN DETERMINED AND ANY DEVIATIONS WILL BE CAUSE FOR REJECTION.
REMOVE ALL BURRS AND SHARP EDGES

DATE: 12-5-62
CH. NO.: 7787
DRAFTS: [Signature]
CHECKER: [Signature]
ENG. APP.: [Signature]

THE CONTENTS OF THIS DRAWING ARE THE EXCLUSIVE PROPERTY OF THE TECHNICAL MATERIEL CORP. ITS UNAUTHORIZED USE OR REPRODUCTION IN WHOLE OR IN PART IS STRICTLY FORBIDDEN.

REQ. PER UNIT

USED ON

HFR-1

ASS'Y. NO.

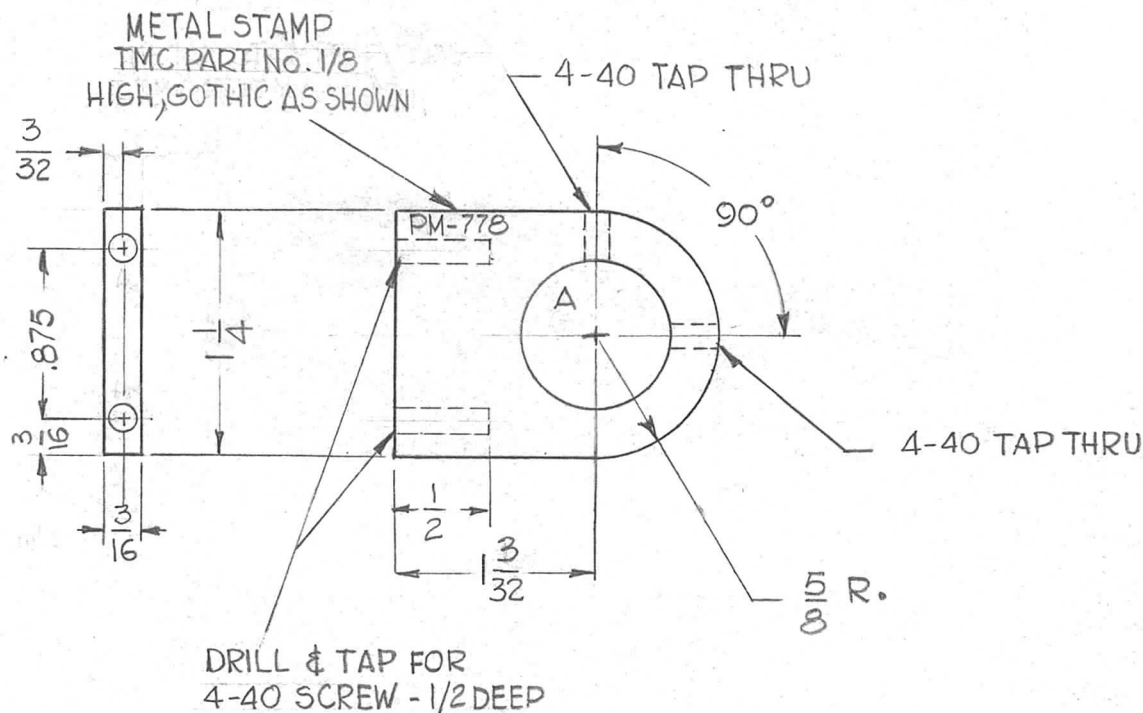
DATE

7-26-62

PM-778

~ HOLE ~

A - .750 $\begin{matrix} +.005 \\ -.000 \end{matrix}$ DIA. 1 Req.



NOTICE TO PERSONS RECEIVING THIS DRAWING

THE TECHNICAL MATERIEL CORPORATION claims proprietary right in the material disclosed herein. This drawing is issued in confidence for engineering information only and may not be reproduced or used to manufacture anything shown herein without permission from THE TECHNICAL MATERIEL CORPORATION to the user. This drawing is loaned for mutual assistance and is subject to recall at any time.

Property of:

THE TECHNICAL MATERIEL CORPORATION
MAMARONECK, NEW YORK

SYM	DESCRIPTION	DATE	CH. NO.	DRAFTS	CHECKER	ENG. APP.	REQ.	ITEM	PART NO.	DESCRIPTION	SYMBOL
									KRUY		
									3/16 THK.	THE TECHNICAL MATERIEL CORP.	
									STOCK SIZE	MAMARONECK, NEW YORK	
									ALUMINUM	BRACKET, DIAL	
									MATERIAL		
									5052-H32	G.D.L.	
									TYPE & TEMPER	CHECKED	
									HEATTREAT. SPEC.		
									S104 YELL. IRIDITE	TAK	
									FINISH & SPEC. NO.		
									ELEC. DES. APP.	MECH. DES. APP.	
											PM-778

UNLESS OTHERWISE SPECIFIED:

DIMENSIONS ARE IN INCHES.

TOLERANCES ON

FRAC. $\pm 1/64$ DEC. $\pm .005$ ANGLES $\pm 1/2^\circ$

SCALE: DO NOT SCALE

MAXIMUM ALLOWABLE TOLERANCES HAVE BEEN DETERMINED AND ANY DEVIATIONS WILL BE CAUSE FOR REJECTION. REMOVE ALL BURRS AND SHARP EDGES

THE CONTENTS OF THIS DRAWING ARE THE EXCLUSIVE PROPERTY OF THE TECHNICAL MATERIEL CORP. ITS UNAUTHORIZED USE OR REPRODUCTION IN WHOLE OR IN PART IS STRICTLY FORBIDDEN.

REQ. PER UNIT

USED ON

MODEL

ASS'Y. NO.

DATE

HFR-1/T

A-3042

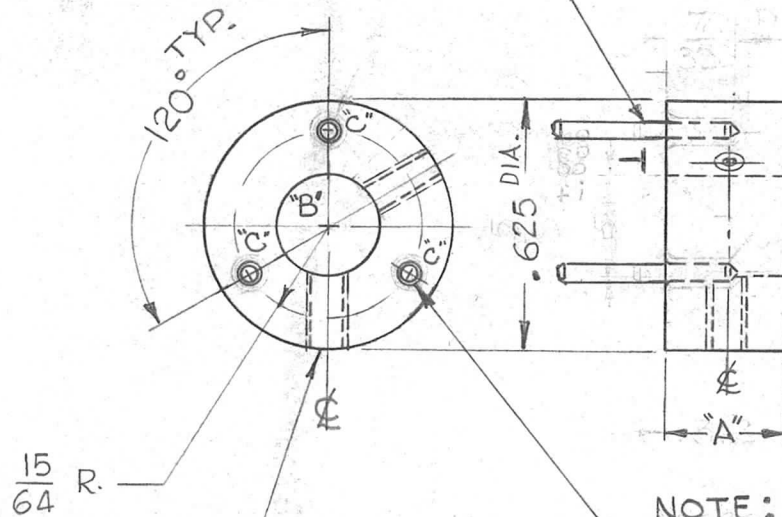
5-26-62

PM-780

C

T.M.C. PART NO.	"A"	"B"	REQ.
PM-780-1	.250	.3135REAM	1
PM-780-2	.375	.3135REAM	1
PM-780-3	.250	.251REAM	1

1 PRESS FIT IN ALL "C" HOLES AS SHOWN AFTER FINISHING



~HOLE~
 "C" ~ $\frac{.0626}{.0621}$ DIA. x $\frac{7}{32}$ DP. RE ~ 3-REQ.

NOTE:
 DEBURR "C" HOLES APPROX. $\frac{1}{32}$ DR.

DRILL & TAP FOR
 6-32 SET SCREW
 2 Req

REQ.	ITEM	PART NO.	DESCRIPTION	SYMBOL
3	1	PN-117	PIN, STRAIGHT, DOWEL	
STAINLESS STEEL			THE TECHNICAL MATERIEL CORP. MAMARONECK, NEW YORK	
#303			COUPLER, SHAFT	
S104 PASSIVATE			G.D.L. <i>[Signature]</i> <i>[Signature]</i>	
FINISH & SPEC. NO.			DRAWN J. ANGER CHECKED <i>[Signature]</i> FINAL APPROVAL <i>[Signature]</i>	
			ELEC. DES. APP. MECH. DES. APP. PM-780 C	

SYM	DESCRIPTION	DATE	CH. NO.	DRAFTS	CHECKER	ENG. APP.
C	ITEM (1) ADDED; NOTE ADDED (C) HOLES WERE .0595 DIA.	9-12-62	7200	ef.	JH	<i>[Signature]</i>
B	DRAWING REINSTATED	7-6-62		SRG	<i>[Signature]</i>	<i>[Signature]</i>
A	OBSOLETE NOTE ADDED	6-27-62				TAK

UNLESS OTHERWISE SPECIFIED:
 DIMENSIONS ARE IN INCHES
 TOLERANCES ON
 FRAC. $\pm 1/64$ DEC. $\pm .005$ ANGLES $\pm 1/2^\circ$

SCALE: DO NOT SCALE
 MAXIMUM ALLOWABLE TOLERANCES HAVE BEEN DETERMINED AND ANY DEVIATIONS WILL BE CAUSE FOR REJECTION.
 REMOVE ALL BURRS AND SHARP EDGES

THE CONTENTS OF THIS DRAWING ARE THE EXCLUSIVE PROPERTY OF THE TECHNICAL MATERIEL CORP. ITS UNAUTHORIZED USE OR REPRODUCTION IN WHOLE OR IN PART IS STRICTLY FORBIDDEN.

REQ. PER UNIT

1

MODEL

HFR-1

USED ON

ASS'Y. NO.

DATE

7-26-62

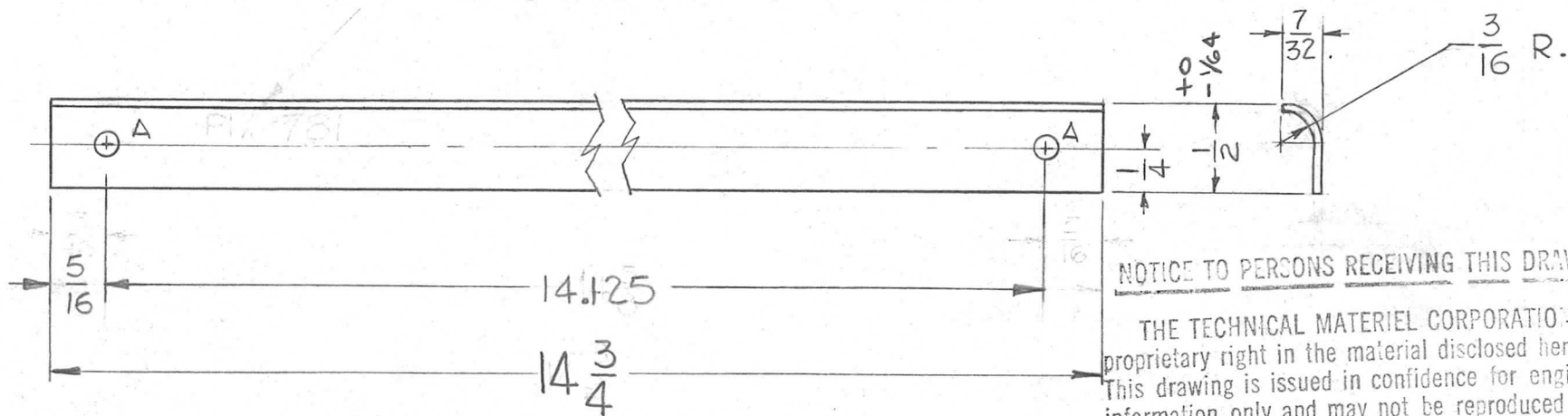
PM-781

A

HOLE -

A - 1/8 DIA. 2 REQ.

META STAINL DVS
LAST HOLES HIGH
BORING AS SHOWN



NOTICE TO PERSONS RECEIVING THIS DRAWING

THE TECHNICAL MATERIEL CORPORATION claims proprietary right in the material disclosed hereon. This drawing is issued in confidence for engineering information only and may not be reproduced or used to manufacture anything shown hereon without permission from THE TECHNICAL MATERIEL CORPORATION to the user. This drawing is loaned for mutual assistance and is subject to recall at any time.

Property of:

THE TECHNICAL MATERIEL CORPORATION
MAMARONECK, NEW YORK

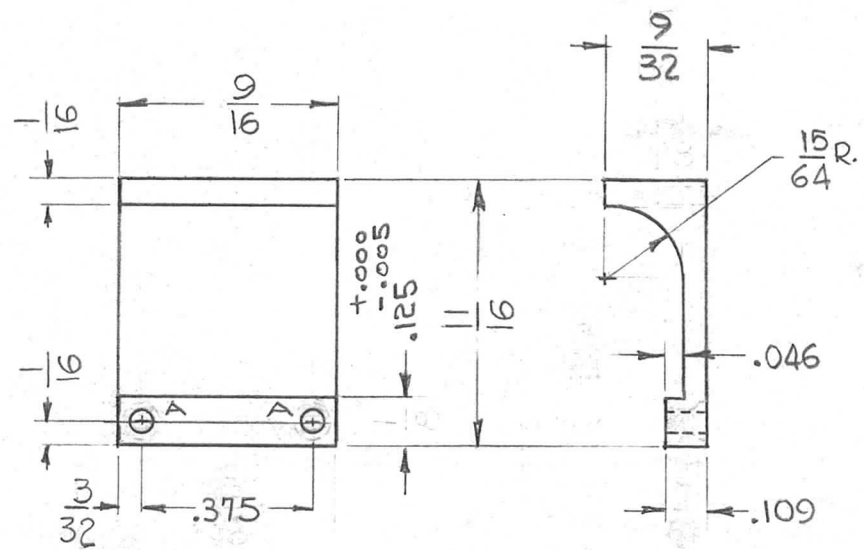
REQ.	ITEM	PART NO.	DESCRIPTION	SYMBOL
			KRUY	
		1/32 THK.	THE TECHNICAL MATERIEL CORP.	
		STOCK SIZE	MAMARONECK, NEW YORK	
A	TOLERANCE ADDED TO 1/2" DIM.	7-28-62 11961	STEEL, STAINLESS	TRACK SLIDE, INDICATOR
SYM	DESCRIPTION	DATE	CH. NO.	DRAFTS
				CHECKER
				ENG. APP.
UNLESS OTHERWISE SPECIFIED: DIMENSIONS ARE IN INCHES		SCALE: DO NOT SCALE		
TOLERANCES ON		MAXIMUM ALLOWABLE TOLERANCES HAVE BEEN DETERMINED AND ANY DEVIATIONS WILL BE CAUSE FOR REJECTION.		
FRAC. ± 1/64 DEC. ± .005 ANGLES ± 1/2°		REMOVE ALL BURRS AND SHARP EDGES		
		#303	G.D.L.	
		TYPE & TEMPER	DRAWN	
		HEAT TREAT. SPEC.	CHECKED	
		S104 PASSIVATE	T.A.K.	
		FINISH & SPEC. NO.	ELEC. DES. APP.	
			MECH. DES. APP.	
			PM-781	A

THE CONTENTS OF THIS DRAWING ARE THE EXCLUSIVE PROPERTY OF THE TECHNICAL MATERIEL CORP. ITS UNAUTHORIZED USE OR REPRODUCTION IN WHOLE OR IN PART IS STRICTLY FORBIDDEN.

REQ. PER UNIT	USED ON		
	MODEL	ASS'Y. NO.	DATE
1	HFR-1	AX-378	6-26-62

PM-783 C

A- #42 DRILL (2 REQ.)



NOTICE TO PERSONS RECEIVING THIS DRAWING

THE TECHNICAL MATERIEL CORPORATION claims proprietary right in the material disclosed hereon. This drawing is issued in confidence for engineering information only and may not be reproduced or used to manufacture anything shown hereon without permission from THE TECHNICAL MATERIEL CORPORATION to the user. This drawing is loaned for mutual assistance and is subject to recall at any time.

Property of:
THE TECHNICAL MATERIEL CORPORATION
MAMARONECK, NEW YORK

SYM	DESCRIPTION	DATE	CH. NO.	DRAFTS	CHECKER	ENG. APP.	REQ.	ITEM	PART NO.	DESCRIPTION	SYMBOL
C	DIM .125 ±.000 -.005 WAS 1/8	7-28-62	11961			JK				THE TECHNICAL MATERIEL CORP. MAMARONECK, NEW YORK	C
B	9/32 DIM WAS 17/64	12-5-62	7780			JWB			STOCK SIZE		
A	DIM .375 WAS .406 #42 DRILL WAS 2-56 DRILL & CSINK	7-24-62	6952			BP			BRASS		
									MATERIAL		
									1/2 HARD	G.D.L	
									TYPE & TEMPER	CHECKED	
									NONE	J.A.K	
									FINISH & SPEC. NO.		
									ELEC. DES. APP.	MECH. DES. APP.	
											PM-783 C

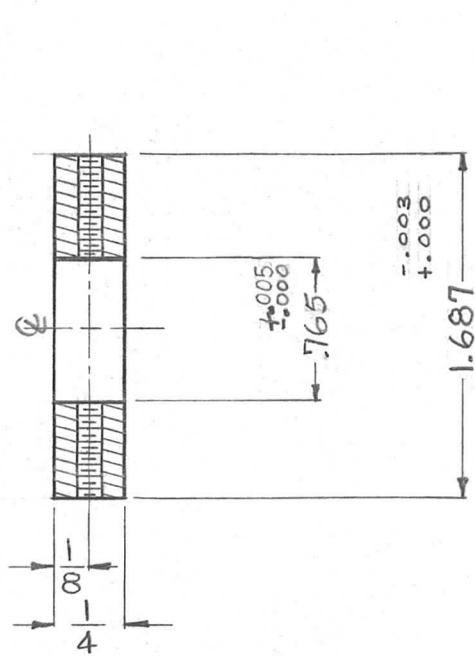
UNLESS OTHERWISE SPECIFIED:
DIMENSIONS ARE IN INCHES
TOLERANCES ON
FRAC. ± 1/64 DEC. ± .005 ANGLES ± 1/2°

SCALE: DO NOT SCALE
MAXIMUM ALLOWABLE TOLERANCES HAVE BEEN DETERMINED AND ANY DEVIATIONS WILL BE CAUSE FOR REJECTION.
REMOVE ALL BURRS AND SHARP EDGES

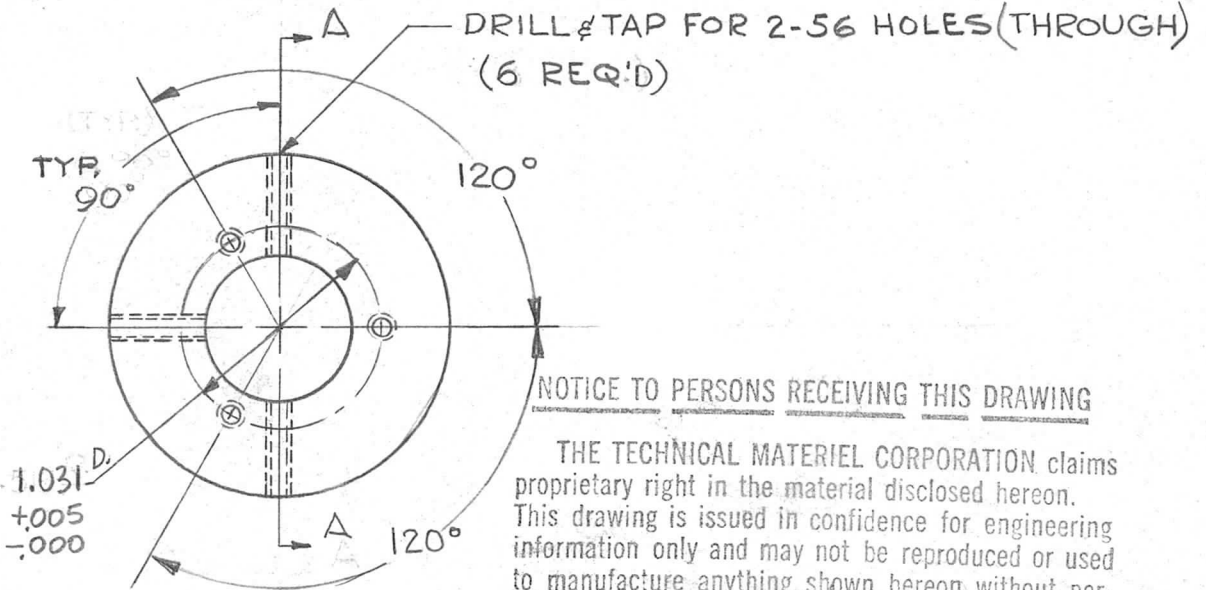
THE CONTENTS OF THIS DRAWING ARE THE EXCLUSIVE PROPERTY OF THE TECHNICAL MATERIEL CORP. ITS UNAUTHORIZED USE OR REPRODUCTION IN WHOLE OR IN PART IS STRICTLY FORBIDDEN.

REQ. PER UNIT	USED ON	
	MODEL	ASS'Y. NO.
1	HFR-1	DATE
		7-26-62

PM-784 C



SECTION "A-A"



NOTICE TO PERSONS RECEIVING THIS DRAWING
 THE TECHNICAL MATERIEL CORPORATION claims proprietary right in the material disclosed herein. This drawing is issued in confidence for engineering information only and may not be reproduced or used to manufacture anything shown hereon without permission from THE TECHNICAL MATERIEL CORPORATION to the user. This drawing is loaned for mutual assistance and is subject to recall at any time.

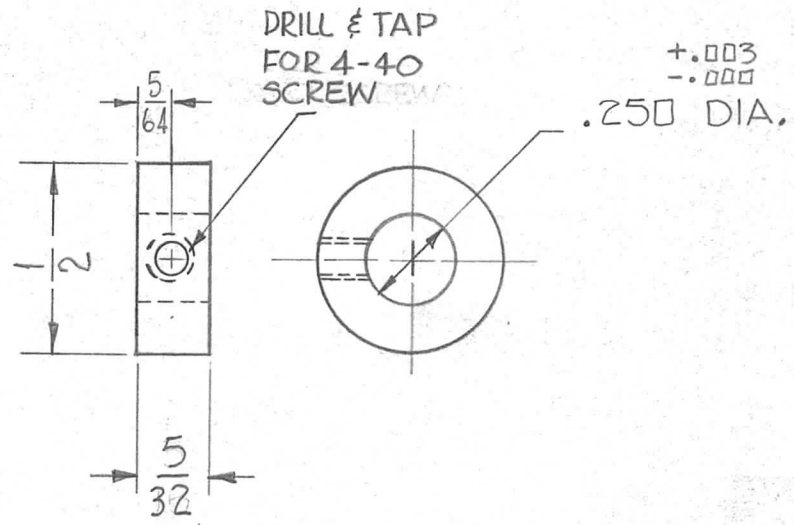
Property of:
 THE TECHNICAL MATERIEL CORPORATION
 MAMARONECK, NEW YORK

NOTE: MATES WITH PM1075

SYM	DESCRIPTION	DATE	CH. NO.	DRAFTS	CHECKER	ENG. APP.	REQ. ITEM	PART NO.	DESCRIPTION	SYMBOL	
C	NOTE ADDED, 1.031 ⁺⁰⁰⁵ / ₋₀₀₀ WAS .515	3-8-67	17939						THE TECHNICAL MATERIEL CORP. MAMARONECK, NEW YORK	BUSHING, CYLINDER MOUNTING	
B	.765 WAS .760 ⁺⁰⁰³ / ₋₀₀₀	11/6/65	14948				ALUMINUM				
A	3 TAP HOLES ON .515 R. ADDED	7-21-64	11913	G.D.L.							
	UNLESS OTHERWISE SPECIFIED: DIMENSIONS ARE IN INCHES TOLERANCES ON FRAC. ± 1/64 DEC. ± .005 ANGLES ± 1/2°	SCALE: DO NOT SCALE MAXIMUM ALLOWABLE TOLERANCES HAVE BEEN DETERMINED AND ANY DEVIATIONS WILL BE CAUSE FOR REJECTION. REMOVE ALL BURRS AND SHARP EDGES					5032 H32				
							S404 YEL. IRIDITE				
							FINISH & SPEC. NO.	ELEC. DES. APP.	MECH. DES. APP.	PM 784 C	

THE CONTENTS OF THIS DRAWING ARE THE EXCLUSIVE PROPERTY OF THE TECHNICAL MATERIEL CORP. ITS UNAUTHORIZED USE OR REPRODUCTION IN WHOLE OR IN PART IS STRICTLY FORBIDDEN.

REQ. PER UNIT	USED ON		DATE	PM-785 A
	MODEL	ASS'Y. NO.		
2	HFR-1		7-24-62	



NOTICE TO PERSONS RECEIVING THIS DRAWING

THE TECHNICAL MATERIEL CORPORATION claims proprietary right in the material disclosed hereon. This drawing is issued in confidence for engineering information only and may not be reproduced or used to manufacture anything shown hereon without permission from THE TECHNICAL MATERIEL CORPORATION to the user. This drawing is loaned for mutual assistance and is subject to recall at any time.

Property of:
THE TECHNICAL MATERIEL CORPORATION
MAMARONECK, NEW YORK

						REQ.	ITEM	PART NO.	KRUY	DESCRIPTION	SYMBOL	
										THE TECHNICAL MATERIEL CORP. MAMARONECK, NEW YORK		
								STOCK SIZE				
A	DIM 5/64 WAS 3/32	7-24-62	6952	G.S.	Jde			STAINLESS STEEL		COLLAR, SHAFT MOUNTING		
SYM	DESCRIPTION	DATE	CH. NO.	DRAFTS	CHECKER	ENG. APP.		MATERIAL				
UNLESS OTHERWISE SPECIFIED: DIMENSIONS ARE IN INCHES TOLERANCES ON FRAC. ± 1/64 DEC. ± .005 ANGLES ± 1/2°		SCALE: Do Not Scale						#303		RUZZE	Jde	BP
MAXIMUM ALLOWABLE TOLERANCES HAVE BEEN DETERMINED AND ANY DEVIATIONS WILL BE CAUSE FOR REJECTION. REMOVE ALL BURRS AND SHARP EDGES								TYPE & TEMPER	HEATTREAT. SPEC.	DRAWN	CHECKED	FINAL APPROVAL
								S-104 PASSIVATE			TAK	PM-785 A
								FINISH & SPEC. NO.	ELEC. DES. APP.	MECH. DES. APP.		

THE CONTENTS OF THIS DRAWING ARE THE EXCLUSIVE PROPERTY OF THE TECHNICAL MATERIEL CORP. ITS UNAUTHORIZED USE OR REPRODUCTION IN WHOLE OR IN PART IS STRICTLY FORBIDDEN.

REQ. PER UNIT

1

MODEL

HFR-1

USED ON

ASS'Y. NO.

DATE

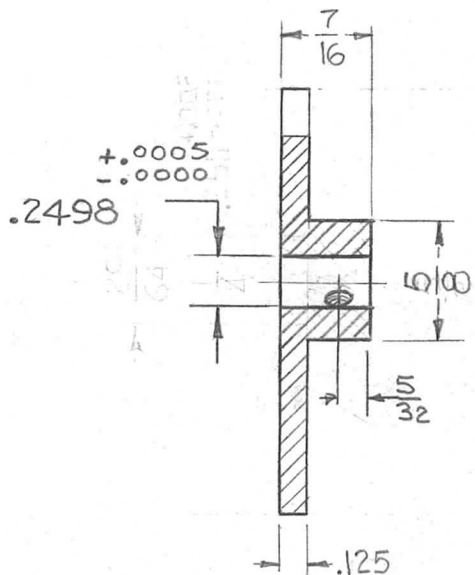
7-26-62

PM-787

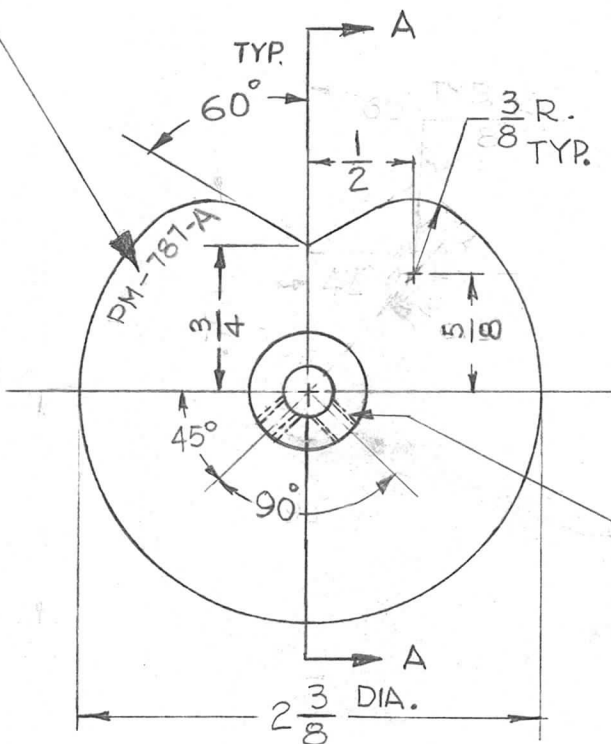
A

ROUND CORNER

METAL STAMP TMC PART No 1/8 HIGH GOTHIC AS SHOWN



SECTION "A-A"



DRILL & TAP FOR 6-32 SCREW (2 Req.)

REQ.	ITEM	PART NO.	DESCRIPTION			SYMBOL
			KRUY			
			THE TECHNICAL MATERIEL CORP.			
			MAMARONECK, NEW YORK			
			STAINLESS STEEL			
			CAM, CONTROL, DETENT			
SYM	DESCRIPTION	DATE	CH. NO.	DRAFTS	CHECKER	ENG. APP.
A	6-32 TAP WAS 4-40 TAP.	12-7-62	7813			
UNLESS OTHERWISE SPECIFIED:		SCALE: DO NOT SCALE				
DIMENSIONS ARE IN INCHES		MAXIMUM ALLOWABLE TOLERANCES HAVE BEEN DETERMINED AND ANY DEVIATIONS WILL BE CAUSE FOR REJECTION.				
TOLERANCES ON		REMOVE ALL BURRS AND SHARP EDGES				
FRAC. ± 1/64 DEC. ± .005 ANGLES ± 1/2°		#303		G.D.L	HQ	BP
		TYPE & TEMPER	HEATTREAT.SPEC.	DRAWN	CHECKED	FINAL APPROVAL
		5104 PASSIVATE			TAK	PM-787
		FINISH & SPEC. NO.	ELEC. DES. APP.	MECH. DES. APP.		A

THE CONTENTS OF THIS DRAWING ARE THE EXCLUSIVE PROPERTY OF THE TECHNICAL MATERIEL CORP. ITS UNAUTHORIZED USE OR REPRODUCTION IN WHOLE OR IN PART IS STRICTLY FORBIDDEN.

REQ. PER UNIT

MODEL
HFR-1

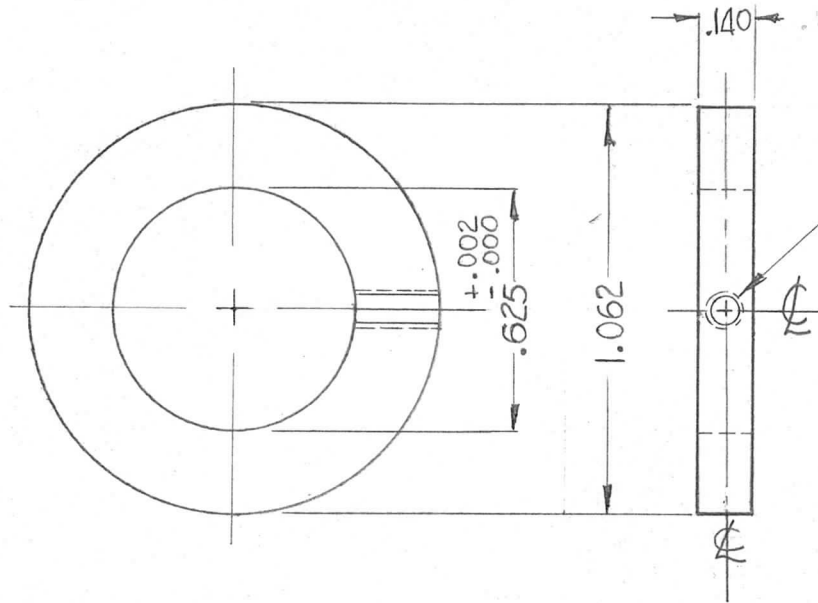
USED ON

ASS'Y. NO.

DATE

7-26-62

PM-791



DRILL & TAP FOR
2-56 SET SCREW

NOTICE TO PERSONS RECEIVING THIS DRAWING

THE TECHNICAL MATERIEL CORPORATION claims proprietary right in the material disclosed hereon. This drawing is issued in confidence for engineering information only and may not be reproduced or used to manufacture anything shown hereon without permission from THE TECHNICAL MATERIEL CORPORATION to the user. This drawing is loaned for mutual assistance and is subject to recall at any time.

Property of:

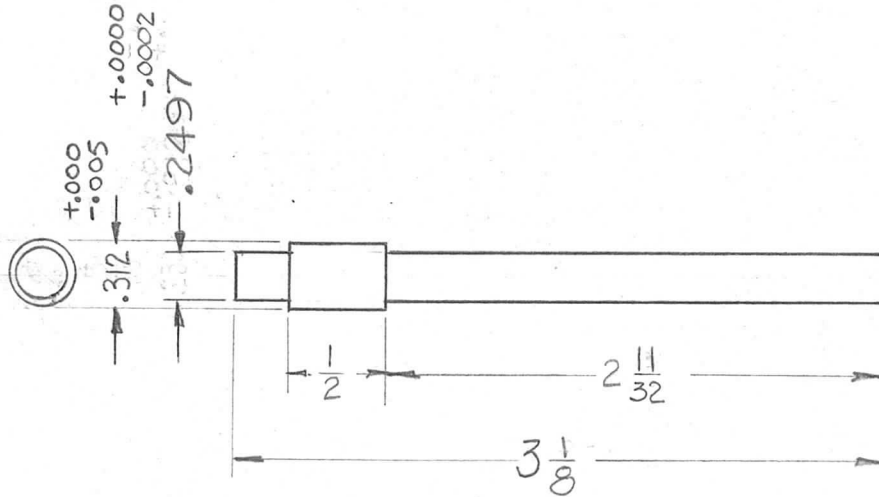
THE TECHNICAL MATERIEL CORPORATION
MAMARONECK, NEW YORK

REQ.	ITEM	PART NO.	DESCRIPTION	SYMBOL
		.140	THE TECHNICAL MATERIEL CORP. MAMARONECK, NEW YORK	
		STAINLESS STEEL	COLLAR, SLIP CLUTCH	
		#303	G.D.L.	HA
		S104 PASSIVATE	DRAWN	BP
			CHECKED	
				PM-791
			ELEC. DES. APP.	
			MECH. DES. APP.	

SYM	DESCRIPTION	DATE	CH. NO.	DRAFTS	CHECKER	ENG. APP.
	UNLESS OTHERWISE SPECIFIED: DIMENSIONS ARE IN INCHES TOLERANCES ON FRAC. ± 1/64 DEC. ± .005 ANGLES ± 1/2°					
	SCALE: Do Not Scale					
	MAXIMUM ALLOWABLE TOLERANCES HAVE BEEN DETERMINED AND ANY DEVIATIONS WILL BE CAUSE FOR REJECTION. REMOVE ALL BURRS AND SHARP EDGES					

THE CONTENTS OF THIS DRAWING ARE THE EXCLUSIVE PROPERTY OF THE TECHNICAL MATERIEL CORP. ITS UNAUTHORIZED USE OR REPRODUCTION IN WHOLE OR IN PART IS STRICTLY FORBIDDEN.

REQ. PER UNIT 1	USED ON			PM-792	A
	MODEL	ASS'Y. NO.	DATE		
	HFR-1		7-26-62		



NOTE -
ALL SHAFTS SHALL NOT DEVIATE FROM STRAIGHTNESS MORE THAN .005 PER FOOT.

							REQ.	ITEM	PART NO.	KRUY	DESCRIPTION	SYMBOL	
											THE TECHNICAL MATERIEL CORP.		
A	DIM 3/16 WAS 3/8 DIM 2 11/32 WAS 2 19/32	7-9-63	9528	1.6					STOCK SIZE		MAMARONECK, NEW YORK		
									STAINLESS STEEL		SHAFT, STEPPED		
SYM	DESCRIPTION	DATE	CH. NO.	DRAFTS	CHECKER	ENG. APP.			MATERIAL				
UNLESS OTHERWISE SPECIFIED: DIMENSIONS ARE IN INCHES TOLERANCES ON FRAC. ± 1/64 DEC. ± .005 ANGLES ± 1/2°		SCALE: NONE							5303		GDL	JHQ	BP
MAXIMUM ALLOWABLE TOLERANCES HAVE BEEN DETERMINED AND ANY DEVIATIONS WILL BE CAUSE FOR REJECTION. REMOVE ALL BURRS AND SHARP EDGES									TYPE & TEMPER	HEATTREAT. SPEC.	DRAWN	CHECKED	FINAL APPROVAL
									S104 PASSIVATE			TAK.	PM-792
									FINISH & SPEC. NO.		ELEC. DES. APP.	MECH. DES. APP.	A

THE CONTENTS OF THIS DRAWING ARE THE EXCLUSIVE PROPERTY OF THE TECHNICAL MATERIEL CORP. ITS UNAUTHORIZED USE OR REPRODUCTION IN WHOLE OR IN PART IS STRICTLY FORBIDDEN.

REQ. PER UNIT

1

HFR-1

USED ON

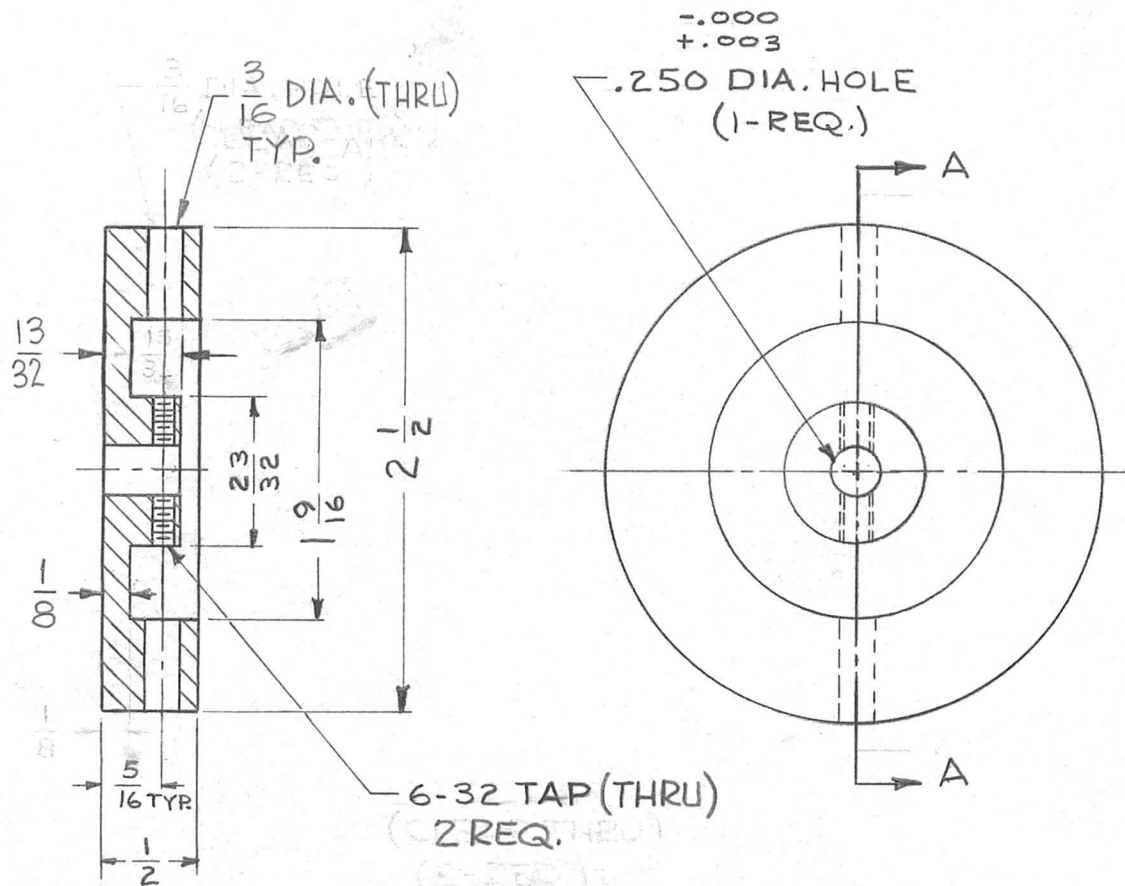
MODEL

ASSY. NO.

DATE

7-26-62

PM-794

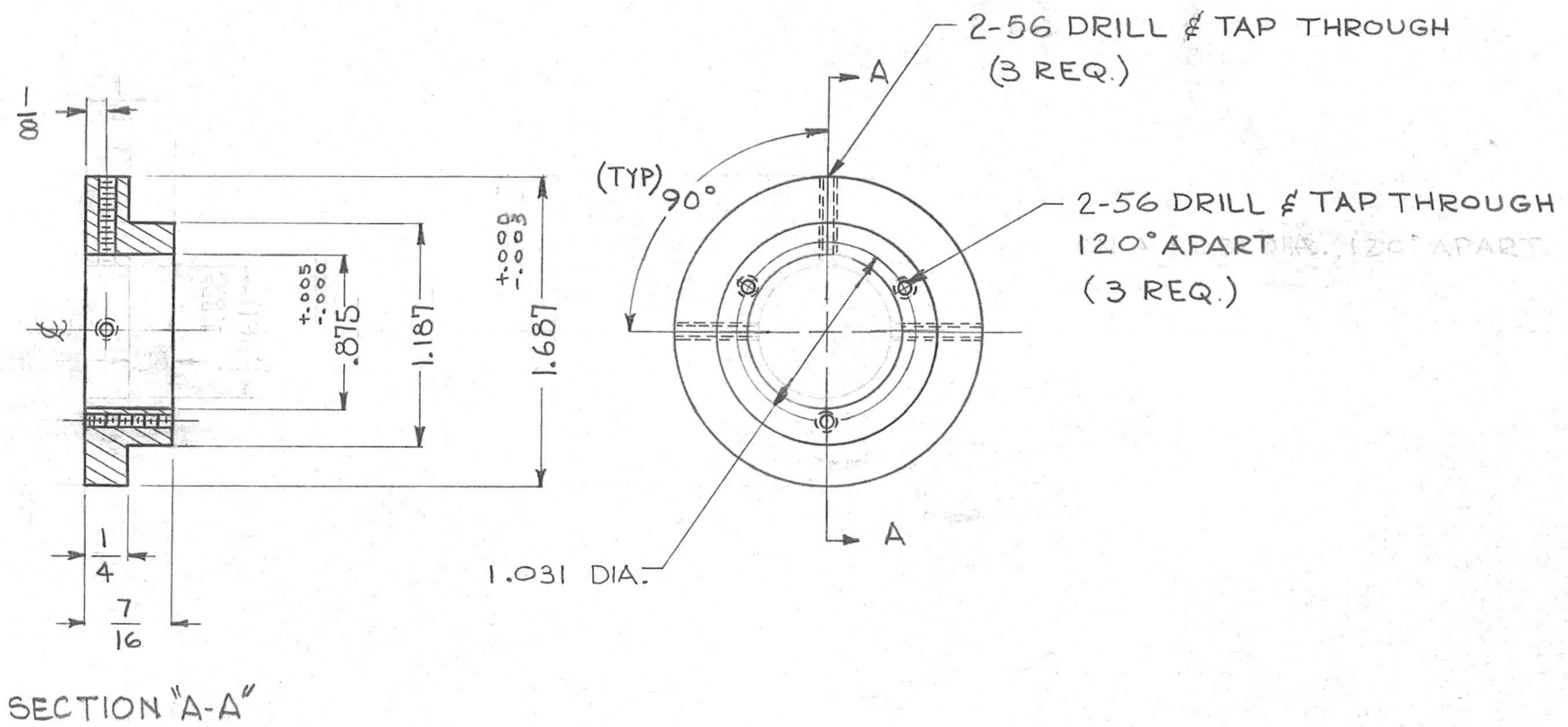


CASTING MUST BE FREE OF
PRECISY, HAD HOLES, AND ALL
SURFACES SMOOTH.

REQ.	ITEM	PART NO.	DESCRIPTION	SYMBOL								
		KRUY										
			THE TECHNICAL MATERIEL CORP. MAMARONECK, NEW YORK									
STOCK SIZE												
BRASS			CAWHEEL, INERTIA WHEEL									
MATERIAL												
SYM	DESCRIPTION	DATE	CH. NO.	DRAFTS	CHECKER	ENG. APP.	TYPE & TEMPER	HEATTREAT. SPEC.	DRAWN	CHECKED	FINAL APPROVAL	
UNLESS OTHERWISE SPECIFIED: DIMENSIONS ARE IN INCHES TOLERANCES ON FRAC. ± 1/64 DEC. ± .005 ANGLES ± 1/2°		SCALE: #	MAXIMUM ALLOWABLE TOLERANCES HAVE BEEN DETERMINED AND ANY DEVIATIONS WILL BE CAUSE FOR REJECTION. REMOVE ALL BURRS AND SHARP EDGES				1/2 HARD		G.S. 5-25-62	HQ	BP	
							#			TAK	PM-794	
							FINISH & SPEC. NO.		ELEC. DES. APP.	MECH. DES. APP.		

THE CONTENTS OF THIS DRAWING ARE THE EXCLUSIVE PROPERTY OF THE TECHNICAL MATERIEL CORP. ITS UNAUTHORIZED USE OR REPRODUCTION IN WHOLE OR IN PART IS STRICTLY FORBIDDEN.

REQ. PER UNIT	USED ON			PM-795	A
	MODEL	ASS'Y. NO.	DATE		
1	HFR-1		7-26-62		

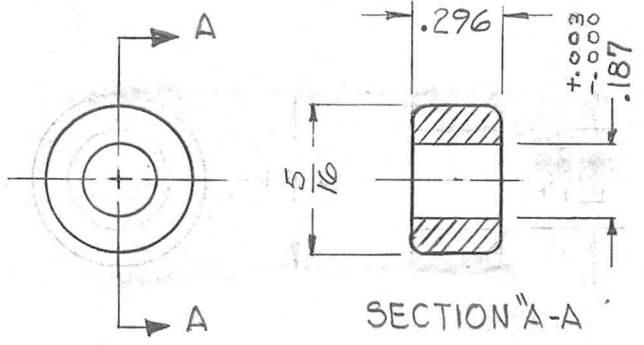


						REQ.	ITEM	PART NO.	KRUY	DESCRIPTION	SYMBOL	
										THE TECHNICAL MATERIEL CORP.		
										MAMARONECK, NEW YORK		
A	.761 & .218 DIMS. DELETED	12-5-62	7765	af	JDe			ALUMINUM		BUSHING, CYLINDER MOUNTING		
SYM	DESCRIPTION	DATE	CH. NO.	DRAFTS	CHECKER	ENG. APP.						
UNLESS OTHERWISE SPECIFIED: DIMENSIONS ARE IN INCHES TOLERANCES ON FRAC. ± 1/64 DEC. ± .005 ANGLES ± 1/2°		SCALE: DO NOT SCALE				2024-T4			G. Sencer	JDe	BP	
MAXIMUM ALLOWABLE TOLERANCES HAVE BEEN DETERMINED AND ANY DEVIATIONS WILL BE CAUSE FOR REJECTION. REMOVE ALL BURRS AND SHARP EDGES		TYPE & TEMPER		HEAT TREAT. SPEC.		DRAWN		CHECKED		FINAL APPROVAL		
		S404 YEL. IRIDITE						JAY		PM-795 A		
		FINISH & SPEC. NO.		ELEC. DES. APP.		MECH. DES. APP.						

THE CONTENTS OF THIS DRAWING ARE THE EXCLUSIVE PROPERTY OF THE TECHNICAL MATERIEL CORP. ITS UNAUTHORIZED USE OR REPRODUCTION IN WHOLE OR IN PART IS STRICTLY FORBIDDEN.

REQ. PER UNIT	USED ON		
	MODEL	ASS'Y. NO.	DATE
1	HFR-1		7-26-62

PM-796 A

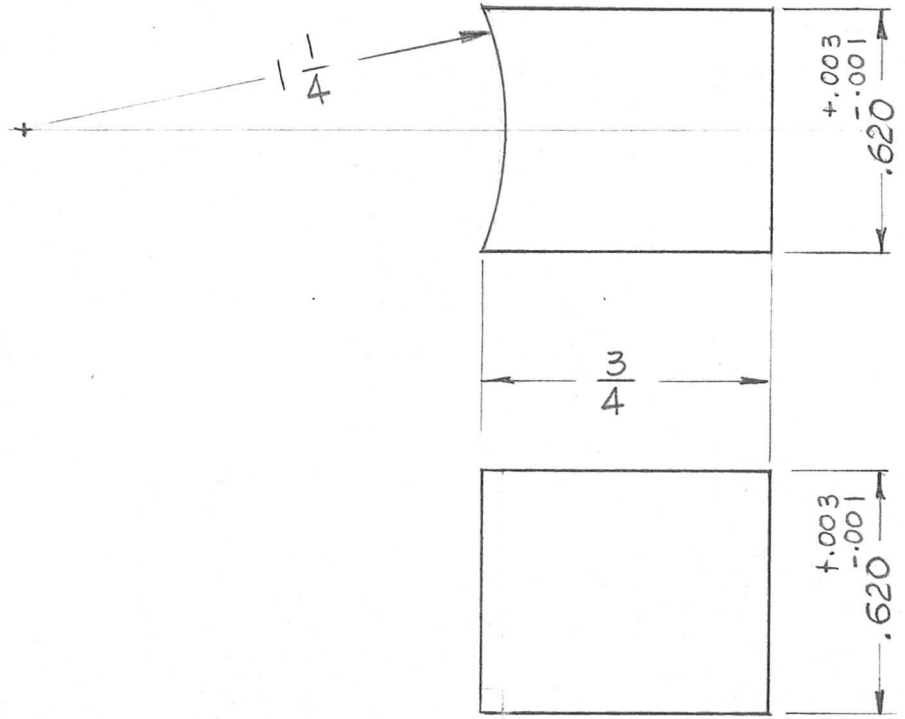


							REQ. ITEM	PART NO.	KRUY	DESCRIPTION	SYMBOL	
									THE TECHNICAL MATERIEL CORP. MAMARONECK, NEW YORK			
								STOCK SIZE	BUSHING, SHAFT MTG			
A	.296 WAS .234 5/16 WAS 3/8	12-7-62	7792					STEEL, STAINLESS				
SYM	DESCRIPTION	DATE	CH. NO.	DRAFTS	CHECKER	ENG. APP.		MATERIAL				
UNLESS OTHERWISE SPECIFIED: DIMENSIONS ARE IN INCHES TOLERANCES ON FRAC. ± 1/64 DEC. ± .005 ANGLES ± 1/2°		SCALE: <i>1:1</i>		MAXIMUM ALLOWABLE TOLERANCES HAVE BEEN DETERMINED AND ANY DEVIATIONS WILL BE CAUSE FOR REJECTION. REMOVE ALL BURRS AND SHARP EDGES				#303	G.D.L.	<i>JWO</i>	<i>BP</i>	
								TYPE & TEMPER	HEATTREAT. SPEC.	DRAWN	CHECKED	FINAL APPROVAL
								3104 PASSIVATE			<i>TRK</i>	PM-796 A
								FINISH & SPEC. NO.	ELEC. DES. APP.	MECH. DES. APP.		

THE CONTENTS OF THIS DRAWING ARE THE EXCLUSIVE PROPERTY OF THE TECHNICAL MATERIEL CORP. ITS UNAUTHORIZED USE OR REPRODUCTION IN WHOLE OR IN PART IS STRICTLY FORBIDDEN.

REQ. PER UNIT	USED ON		
	MODEL	ASS'Y. NO.	DATE
1	HFR-1	AX-379	7-26-62

PM



REQ.	ITEM	PART NO.	DESCRIPTION	SYMBOL
		KRUY	THE TECHNICAL MATERIEL CORP. MAMARONECK, NEW YORK	
		STOCK SIZE		
		BRASS	SLIDE, WHEEL LOCKING	
		MATERIAL		
		1/2 HARD	G.O.L	BP
		TYPE & TEMPER	DRAWN	CHECKED
		NONE	TAK	FINAL APPROVAL
		FINISH & SPEC. NO.	ELEC. DES. APP.	MECH. DES. APP.
				PM-799

UNLESS OTHERWISE SPECIFIED:
DIMENSIONS ARE IN INCHES
TOLERANCES ON
FRAC. $\pm 1/64$ DEC. $\pm .005$ ANGLES $\pm 1/2^\circ$

SCALE:
MAXIMUM ALLOWABLE TOLERANCES HAVE BEEN DETERMINED AND ANY DEVIATIONS WILL BE CAUSE FOR REJECTION.
REMOVE ALL BURRS AND SHARP EDGES