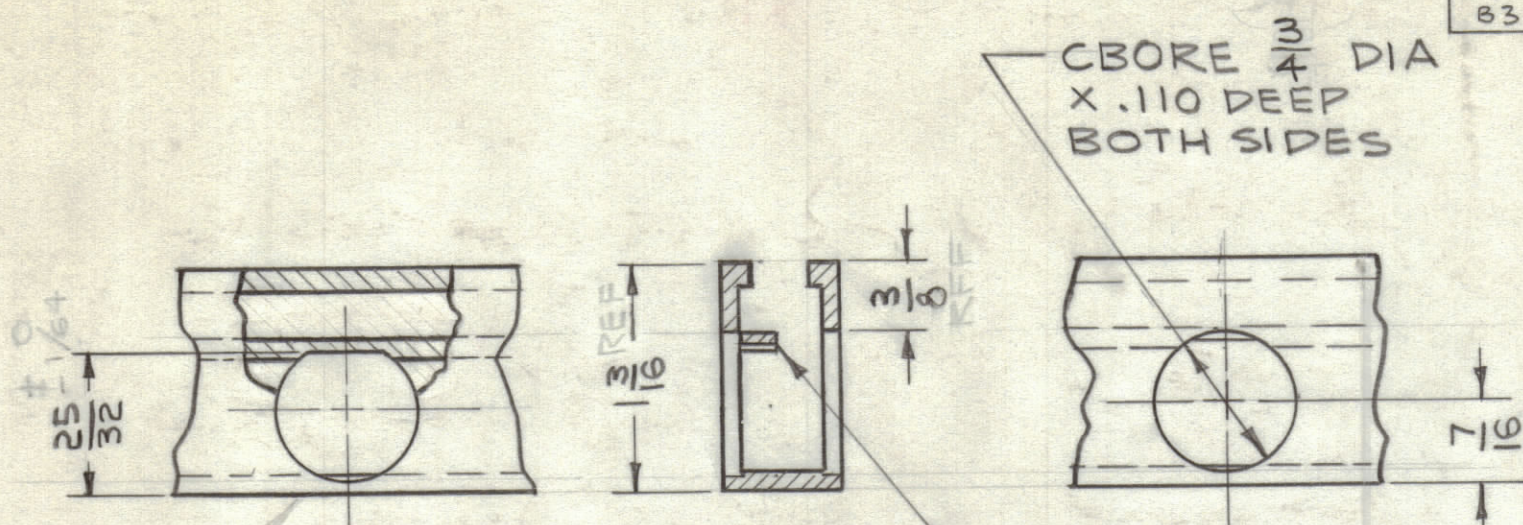


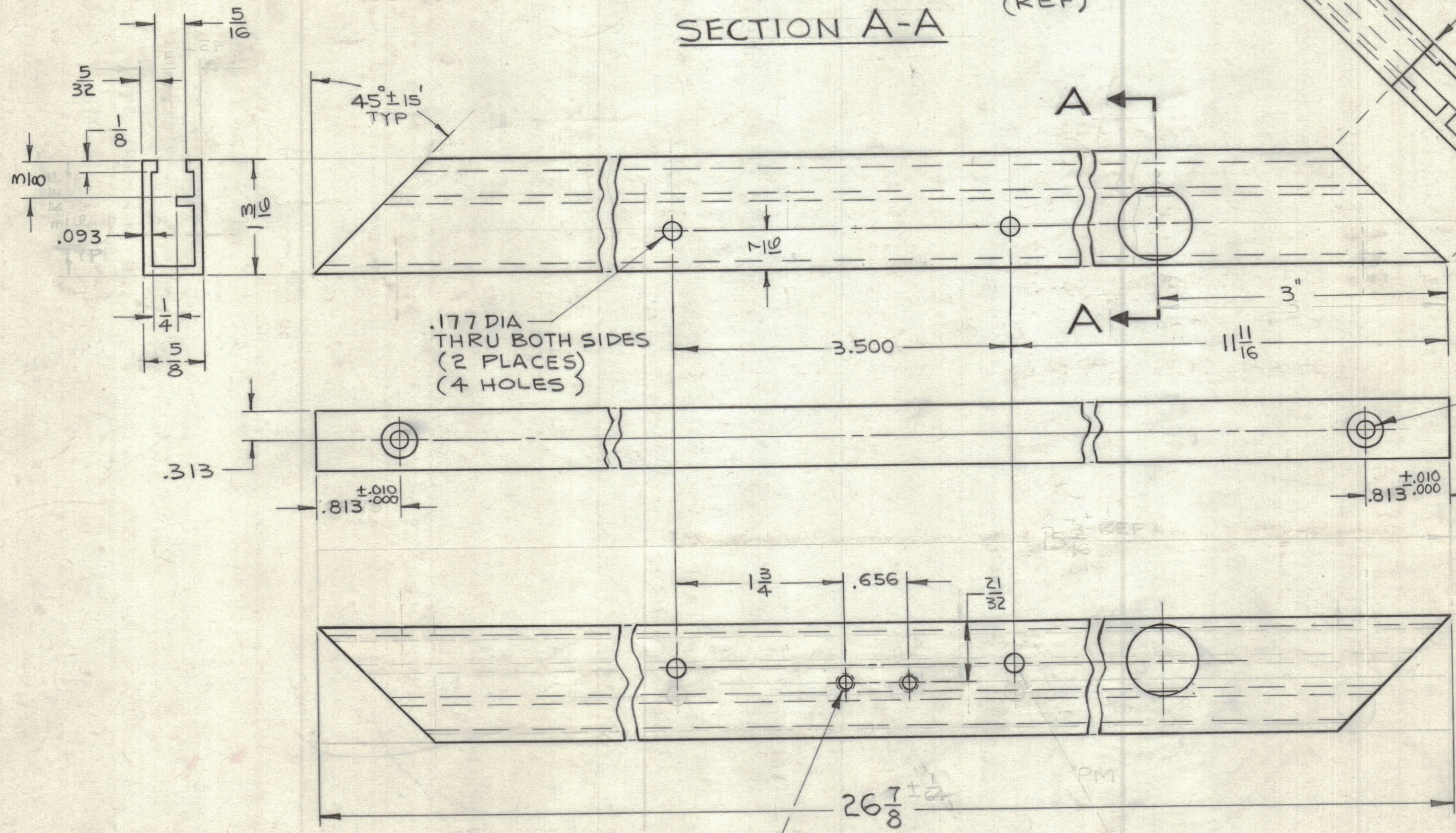
TMC PART NO.	DESCRIPTION	RAK-21	RAK-22
PM830-1	AS SHOWN (RIGHT)	1	1
PM830-2	OPPOSITE (LEFT)		1

REVISIONS					
ZONE	SYM	DESCRIPTION	DATE	E.M.N. NO.	APPD
H7, A7	A	TMC P/N CHART ADD., NOTE 4 REVISED COMPL.	8.6.64	12055	MP TK
B3		NOTE 'PM 830-1 SHOWN' ADDED			



DO NOT REMOVE THIS LEG TOTALLY (REF)

SECTION A-A



PARALLEL & PERPENDICULAR WITHIN .005 T.I.R. BOTH ENDS

.234 DIA & CSK .390 DIA 2 HOLES

.177 DIA THRU BOTH SIDES (2 PLACES) (4 HOLES)

(#36) .106 DIA TAP #6-32NF 2 HOLES THIS SIDE ONLY

PM 830-1 SHOWN

NOTES :

- MATERIAL: EXTR. ALUMINUM, 6063-T5, MARS METAL PROD. INC., DIE # 1018 OR EQUIV.
- EXTRUSION TO BE FREE OF GAUGES OR ANY OTHER IMPERFECTIONS.
- REMOVE ALL BURRS AND SHARP EDGES.
- FINISH: 1) FINE BRUSH PER MISA 3625 TYPE II, 2) WIPE CLEAN W/THINNER 3) 1 COAT WATER CLEAR FLAT BAKING EPOXY 4) BAKE 45 MIN. AT 360°F

NOTES

1	RAK-21	A-3126
QTY./UNIT	MODEL USED ON	ASSY. NO.
SCALE	CODE	

THE CONTENTS OF THIS DRAWING ARE THE EXCLUSIVE PROPERTY OF THE TECHNICAL MATERIEL CORP. ITS UNAUTHORIZED USE OR REPRODUCTION IN WHOLE OR IN PART IS STRICTLY FORBIDDEN.

REQ'D.	ITEM	PART NUMBER	DESCRIPTION	SYMBOL
KRUY LIST OF MATERIAL				
MATERIAL		THE TECHNICAL MATERIEL CORP. MAMARONECK, NEW YORK		
SEE NOTE 1		TITLE		
SEE NOTE 4		FRAME, WINDOW HANDLE SIDE		
UNLESS OTHERWISE SPECIFIED DIMENSIONS ARE IN INCHES AND INCLUDE CHEMICALLY APPLIED OR PLATED FINISHES		DRAWN	DATE	FINAL APPROVAL
		10-17-62		
		CHECKED	DATE	
		ELECT. DES.	DATE	
		MECH. DES.	DATE	
		PM-830		A
		1/363 SHEET		REV. LTR.