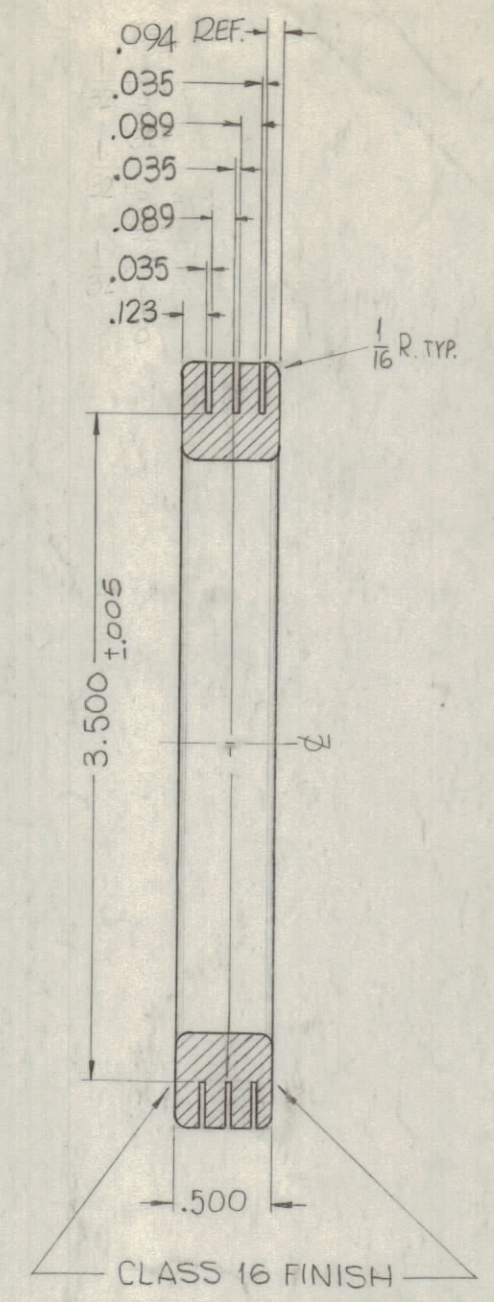


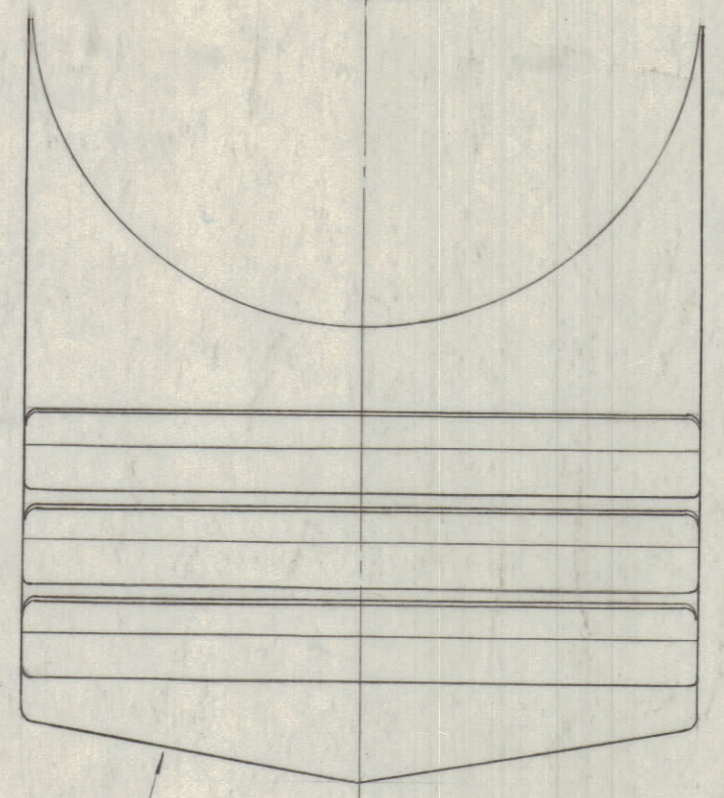
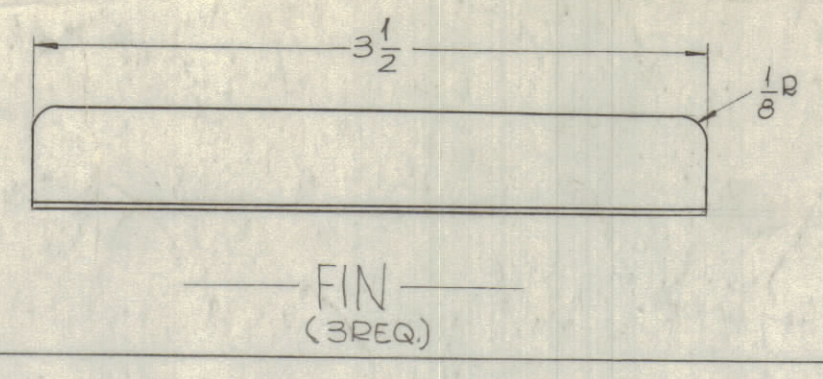
MATERIAL ~ HALF HARD BRASS
TYPE ~ FREE MACHINING

NOTE: DO NOT MACHINE UNTIL GROVES ARE CUT.

RING
(1 REQ.)

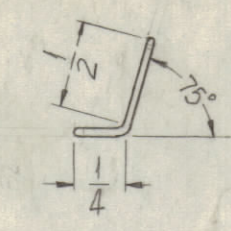


SECTION - A-A

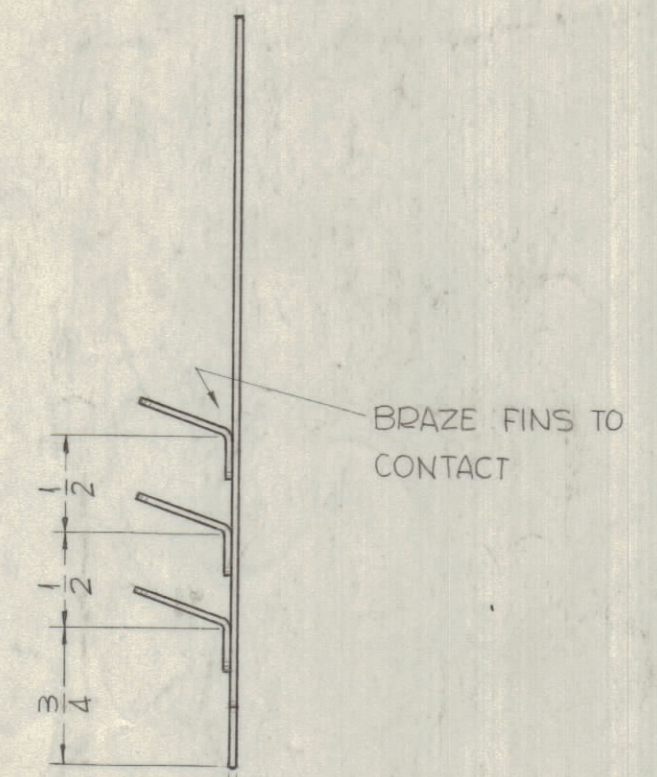


DIMENSIONS FOR THIS CONTACT ARE THE SAME AS CONTACT 2#3 LESS FIN.

CONTACT-1

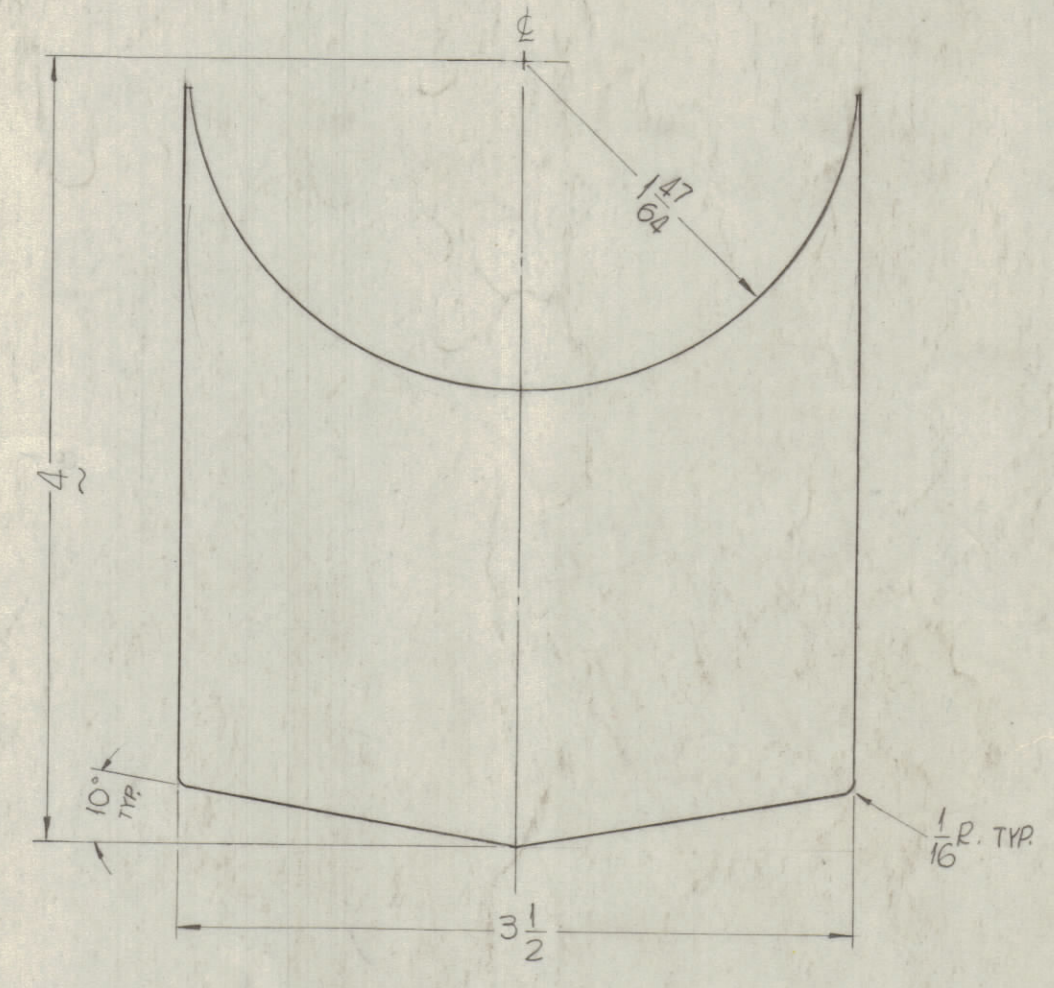


MATERIAL ~.032 COLD ROLLED COPPER.

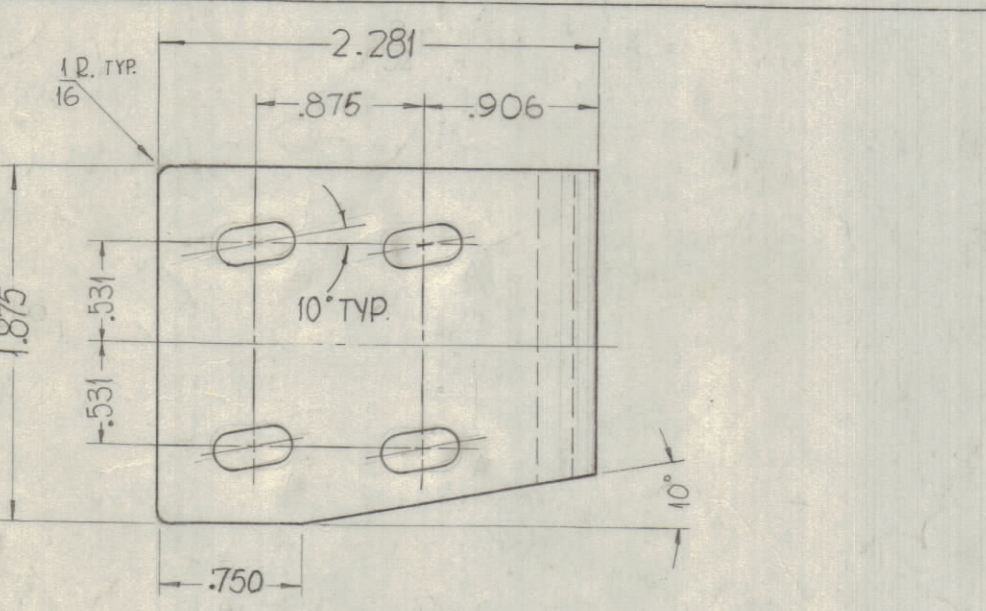


.032 COLD ROLLED COPPER

CONTACTS-2#3

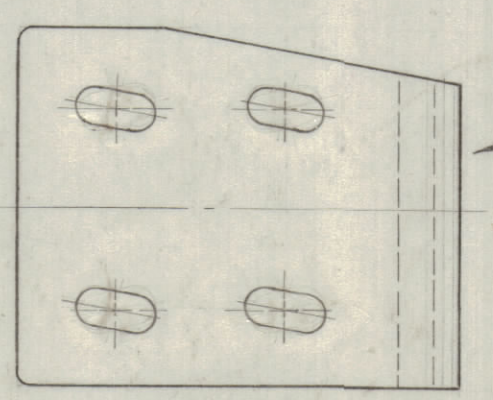
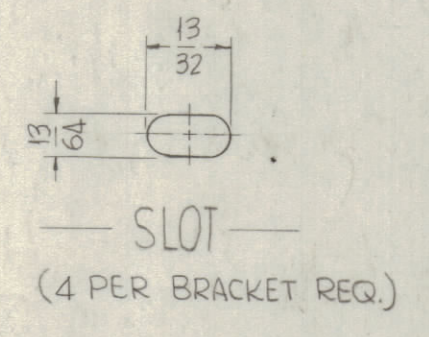


.032 COLD ROLLED COPPER



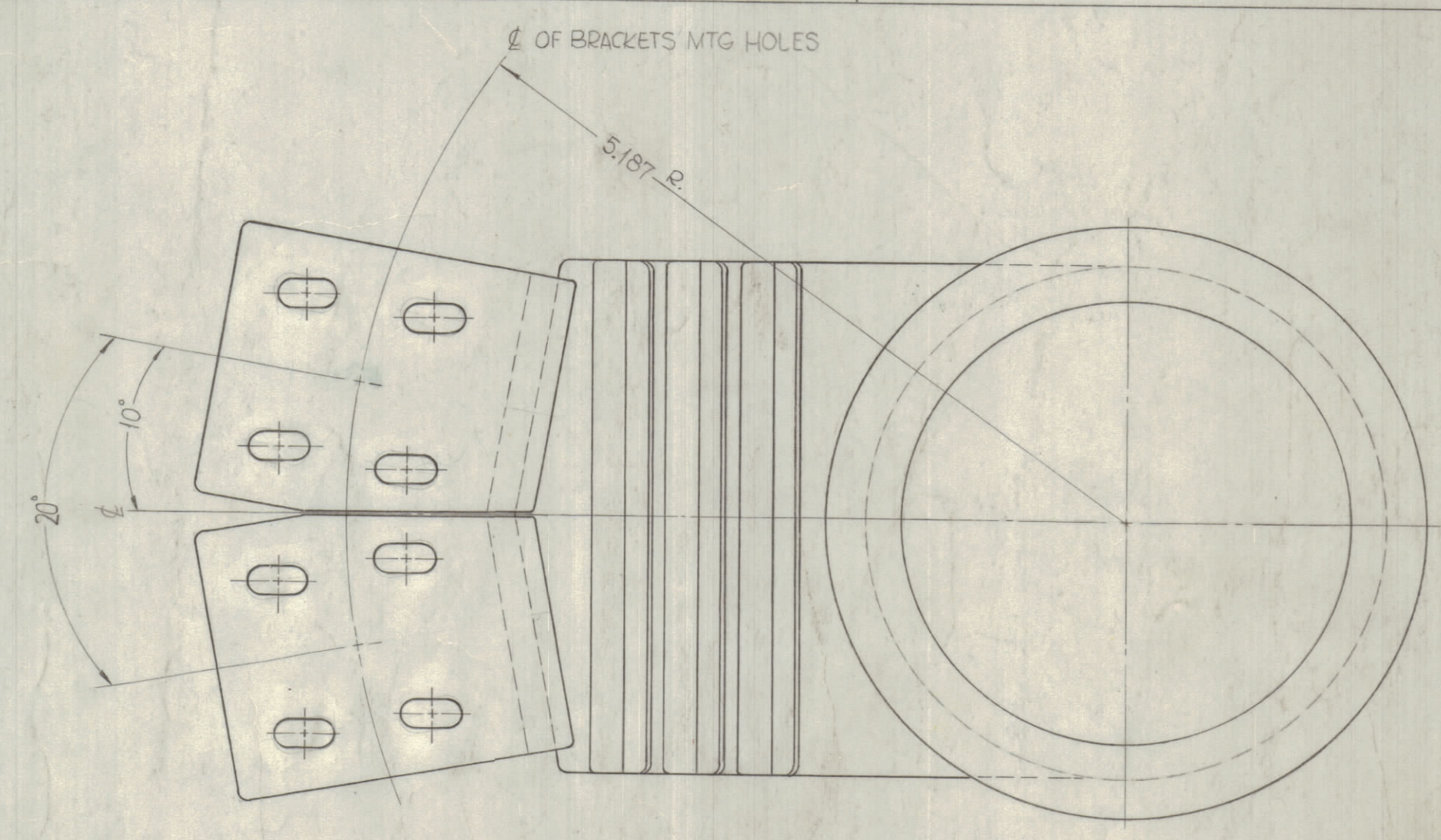
MATERIAL: HALF HARD BRASS

BRACKET-2



DIMENSIONS FOR THIS BRACKET ARE THE SAME AS BRACKET-2. ONLY THE ANGLE AND SLOTS ARE OPPOSITE.

BRACKET-1



RING, CONTACTS & BRACKETS ASS'Y

NOTES:
UNLESS OTHERWISE SPECIFIED
ROUND ALL EDGES & CORNERS 1/32 RADIUS.
POLISH BEFORE PLATING.
S-245 SILVER PLATE, BRIGHT.
S-423 IRIDITE 18D SILVER-KOTE.
SEMI-BUFF BRASS RING (AFTER PLATING).
ALL DIMENSIONS APPLY AFTER PLATING.

NOTES

2	GPT-200K (AS-124)	AX-443
QTY./UNIT	MODEL USED ON	ASS'Y. NO.
SCALE	CODE	

REQ'D.	ITEM	PART NUMBER	DESCRIPTION	SYMBOL
F. BUDETTI				
LIST OF MATERIAL				
MATERIAL			THE TECHNICAL MATERIEL CORP.	
SEE INDIVIDUAL PARTS			MAMARONECK, NEW YORK	
FINISH			TITLE	
SEE NOTES			CONTACT, WIPER	
UNLESS OTHERWISE SPECIFIED			DRAWN	DATE
DIMENSIONS ARE IN INCHES AND INCLUDE			DATE	DATE
CHEMICALLY APPLIED OR PLATED FINISHES			DATE	DATE
DECIMALS			TOLERANCES	
X ± .05			± 1/64	
.XX ± .01			ANGLES	
XXX ± .005			± 6° 30'	
THE CONTENTS OF THIS DRAWING ARE THE EXCLUSIVE PROPERTY			ELECT. DES.	
OF THE TECHNICAL MATERIEL CORP. ITS UNAUTHORIZED USE OR			DATE	
REPRODUCTION IN WHOLE OR IN PART IS STRICTLY FORBIDDEN.			MECH. DES.	
			DATE	
			SHEET	
			REV. LTR.	

PM-841